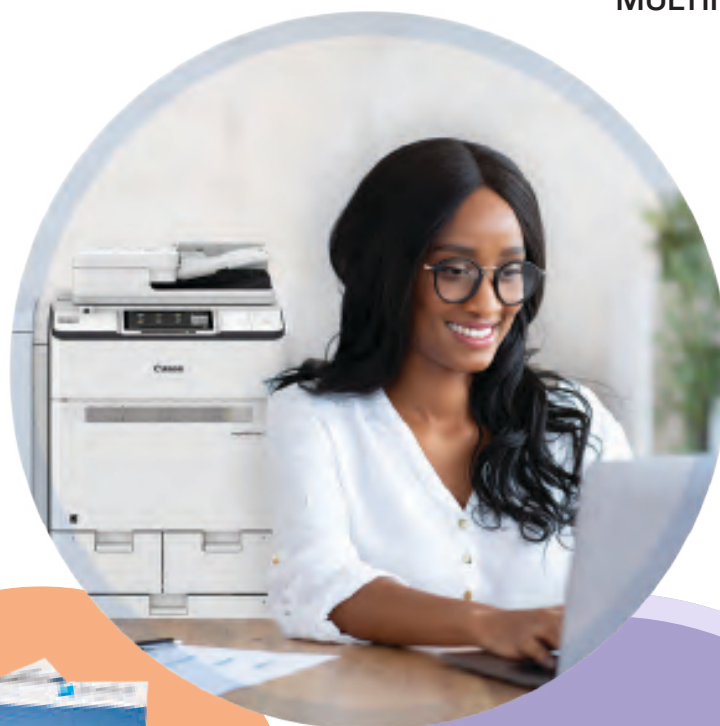




imagePRESS Lite C270/C265

MULTIFUNCTION PRINTERS



Today's marketplace necessitates the ability to be resilient and versatile while improving efficiency. At the same time, meeting tight deadlines with a lean staff requires equipment that's intuitive, adaptive, and reliable and can consistently produce work with minimal effort. Introducing the imagePRESS Lite C270 Series of multifunction printers—an outstanding investment that's designed to deliver the workflow, user-centric control, and remarkable print quality that your essential work demands.

imagePRESS Lite C270 shown with optional accessories.

imagePRESS Lite C270/C265

OFFICE FUNCTIONALITY. PROFESSIONAL QUALITY.

The imagePRESS Lite C270 Series multifunction printers bring together Canon's deep understanding of the enterprise and production marketplaces. Now, the features necessary for both high-end office and light production environments can be utilized in a single, cost-effective, and feature-rich device. With Canon's imagePRESS Lite C270/C265 color multifunction printers, you'll have the resources to help advance your business—now and in the future.



imagePRESS Lite C270 shown with optional accessories.



WORK EFFICIENTLY

EASY, INTUITIVE, AND CONSISTENT

The imagePRESS Lite C270/C265 multifunction printers are designed to be in sync with how users work. All models feature a large 10.1" touchscreen that's responsive and intuitive, making operation clear and virtually seamless. User-friendly techniques echo the operation of smart phones and tablets. When utilizing an imagePRESS Lite or imageRUNNER ADVANCE DX model, the interface remains consistent, allowing work to proceed effortlessly and with a minimal learning curve.

A CUSTOMIZED EXPERIENCE

You can customize your experience to your personal preference. Once logged in, you can see your preferred default log-in screen and desired language; preferred settings for Copy, Send, Fax, and Store; accessibility settings; easy recall of previous job settings; and more—following you from compatible, networked device to device. You can also take advantage of single sign-on (SSO) to access and scan to available cloud destinations.¹

With Hot Folders, you can drag-and-drop files (PDF, JPG, or TIFF) to shared folders of Advanced Box on the MFP. Files are printed with the print settings set beforehand by the administrator for each specific folder. No driver is needed for this setup. This is an ideal solution for utilizing repetitive tasks and workflows and to help administrators manage drivers.



¹ Subscription to a third-party cloud service required. Subject to third-party cloud service providers' Terms and Conditions. Neither Canon Inc. nor Canon U.S.A., Inc. represents or warrants any third-party product or feature referenced hereunder.

EXCEPTIONAL EASE



imagePRESS Lite C270 shown with optional accessories.



OUTSTANDING PRODUCTIVITY

Some models in the imagePRESS Lite C270 Series can reach maximum production speeds of up to 70/80 ppm (Color/BW). Also, the Single Pass Duplex Color Scanner converts paper documents into digital files up to 270/270 ipm at 300 dpi (Color/BW).

KEEPS RUNNING

Slowdowns and interruptions can cost time and money. That's why Canon designed the imagePRESS Lite C270 Series with a range of impactful features that can help maximize productivity. Outstanding toner, drum, and part yields can help you by minimizing downtime so you can complete required tasks. Even better, toner and paper can be replenished on-the-fly—no need to interrupt printing.

VAST MEDIA SUPPORT

Print your work on the stock that makes the right impact. The imagePRESS Lite C270/C265 support a wide variety of media, including coated and heavy stocks up to 80 lb. Cover. Extend your reach by printing on specialty stocks, including tabs, envelopes, and even long sheets up to 51.2".² A standard paper capacity of up to 3,300 sheets³ helps long jobs run without having to stop for paper replenishment.

WORK EASIER

The interface was designed for maximum ease of use. Functions are quickly initiated with clearly identifiable on-screen buttons that can be organized to fit the way you work. Repetitive or complicated tasks can be assigned to a single button on the interface, speeding workflow through less manual intervention.

² Options required.

³ Capacity based on 20 lb. Bond Letter.

BRILLIANT QUALITY

INNOVATION THAT DELIVERS

Canon's noted expertise in color imaging and its ongoing commitment to R&D have resulted in a range of advanced technologies that are designed to deliver outstanding image quality time after time.

MAKE A BRILLIANT IMPRESSION

This next-generation imaging solution incorporates stunning image quality at production speeds. Output crisp, color images with remarkable clarity at high speeds with the state-of-the-art Red VCSEL technology of the imagePRESS Lite C270 Series.

RICH, CLEAR, VIVID IMAGES

By allowing the surface properties of the media to show through Canon's translucent CV Toner, the press can help produce amazingly vibrant and vivid images across the entire sheet surface on a wide variety of media, including textured stocks.

OUTSTANDING STABILITY

Maintaining a consistent environment and automatic measuring of density patches combine to help you reproduce your color output and branding to your elevated expectations.

READY FOR SMOOTH AND ROUGH SURFACES

The combination of the flexible transfer belt and Simple Transfer Adjustment technology allows the toner to fill the peaks and valleys of your textured and embossed stocks, producing high-density images for custom and premium applications.





imagePRESS Lite C265 shown with optional Long Sheet Feeding and Catch Tray-B1.

TAKE CONTROL

DATA SECURITY FEATURES

An increase in the number of data security breaches is impacting organizations on a global scale. Your printers can play a role in the larger, connected landscape.

The imagePRESS Lite Series incorporates an array of security features—many included standard and consistent with the imageRUNNER ADVANCE DX models—to help users safeguard sensitive information, help with privacy, and assist in regulatory compliance efforts.

The imagePRESS Lite C270/C265 feature technologies that can verify that the device boot process, firmware, and applications initialize at startup, without alteration or tampering by malicious third parties. During operation, McAfee Embedded Control utilizes a whitelist to help protect against malware and tampering of firmware and applications.⁴

CONTROL DEVICE ACCESS

Using a host of flexible authentication methods, administrators can control who has access to the printer and to which features. This can be done using a PIN, user name and password, or card log-in (with the addition of an optional card reader). Restrictions, such as access to color copying and scanning functions, can be applied by individual, group, or through customized roles. You can also define whether to allow unregistered users, such as visitors, to log in as guests and then specify their level of access.

CONTROL ACCESS TO ADMINISTRATION SETTINGS

Device configurations, such as network settings and other control options, are available only to users with administrator privileges, thus enhancing security by helping to limit intentional or accidental changes to device functions and permissions. Administrators can set requirements for passwords, such as expiration period, lockout time, and complexity. They can even access the device remotely with comprehensive control, from changing permissions to monitoring activity, and even turning devices on or off or locking down specific equipment or functions.⁴

⁴ Optional accessories may be required. The McAfee Embedded Control function is set to [Off] by default. It can be turned on by an administrator in Settings/Registration. When this function is set to ON, device startup will increase by 20-40 seconds (depending on the model). Recovery from Sleep Mode is not affected.



ADVANCED SECURITY

HELP PROTECT DATA

The imagePRESS Lite C270 Series multifunction printers include several security features to help protect data they send across the network. IPsec (Internet Protocol Security) can help users safeguard the exchange of data at the communications level by encrypting inbound and outbound network traffic, confirming sender identity, and helping ensure unaltered transmission receipt. TLS 1.3 (Transport Layer Security) encryption is designed to help prevent access to, and tampering of, data being exchanged.

NETWORK CONNECTIONS

The imagePRESS Lite C270 Series supports the IEEE 802.1x protocol, providing authentication to supported network devices and establishing a closed connection. The protocol is designed to help keep unwanted users from connecting to the network, whether they use a wired connection or mobile device.

HELP KEEP DOCUMENTS IN THE RIGHT HANDS

All organizations deal with sensitive documents, and if they get into the wrong hands, consequences can range from damaged reputation to heavy fines or even legal action. Sensitive and confidential data—including employee records, customer information, and proprietary intellectual property—can be vulnerable when left unattended in output trays. To help limit having such documents left at the printer, users can create a PIN that must be entered at the device to release the job. Or administrators can require that users log in before printing their jobs using one of the various authentication methods.

WORKFLOW SECURITY FEATURES

Whether by human error or with harmful intent, everyday office workflows can lead to misdirected information, potentially causing serious security issues. The imagePRESS Lite C270 Series has several features that can help, all easy to use and under the administrator's control. Scan destinations can be restricted for all users or certain groups, such as guests, thereby limiting the ability to send documents to recipients in a specific address book or domain. For even higher levels of control, users can be allowed to send documents only to themselves. And by password-protecting address books, they can help protect private details; information can be added, edited, or deleted only by authorized users.



POWERFUL TOOLS

EMBEDDED CONTROLLER FOR ENTRY-LEVEL WORK

When looking to simplify the printer driver workflow, the embedded imagePRESS Printer Kit (PS/PCL/UFR) can be great for environments that utilize a centralized print, scan, and device management structure.

Intended to provide the ease needed in today's demanding business operations, the interface boasts many customizable, streamlined features. And with Canon's Multifunction Embedded Application Platform (MEAP®), you can incorporate advanced scanning applications, cost recovery, document distribution, pull printing, and other customized applications.⁵

EXTENSIVE CONNECTIVITY

Using Universal Send Software, easily convert paper documents to digital form in an expanded range of file formats. This software supports advanced PDF features, including Adobe PDF Reader Extensions, Encrypted PDF, Searchable PDF, and more. For outstanding speed across your network, reduce file sizes with High Compression PDF/XPS.

Designed to help users manage workflow for color-centric light production environments, the imagePRESS Lite C270 Series multifunction printers can help boost productivity. With an extensive set of advanced job management features, tools, and utilities, jobs can move through your environment with impressive speed and accuracy.

Each business has its specific needs and Canon's MEAP platform enables the system to incorporate unique applications, such as cost-recovery and document distribution solutions. Once activated, uniFLOW Online Express, a standard cloud solution, displays activity in an information-packed, centralized dashboard that provides up-to-the-minute insights into print activity.



Optional accessories shown above.



DO MORE

imagePRESS SERVER M20

EXTRAORDINARY PERFORMANCE

Powered on the Fiery FS500 system software, the imagePRESS Server M20 give you the resources needed to help you tackle challenging and complex tasks. Out of the box, these controllers are ready with impactful tools and utilities for precise color, job management, administration, and security features.

CENTRALIZED CONTROL

From Command WorkStation's streamlined Job Center area, users can easily view the status of network servers; monitor consumable levels; preview jobs; and group, manage, and track the status of jobs. Archive Manager allows you to manage and share your archive jobs easily across your compatible Fiery-powered imagePRESS devices from a single interface.⁶

BRILLIANT COLOR TOOLS

The powerful Spot-On utility helps remove the guesswork of color matching, offering an intuitive interface that makes it fast and easy to help preserve your branding.

For environments that require expert color and prepress tools, the Automation Package⁷ and Color Right Package⁷ provide an extensive suite of integrated tools that allow you to quickly make file and color adjustments directly at the imagePRESS Server.

ENHANCED PRODUCTIVITY

The drivers include the Booklet-Maker feature to facilitate the production of multipage booklets. The standard Hot Folders and Virtual Printers features enable administrators to create network-accessible folders and printers that are pre-configured for specific output settings.

ROBUST DOCUMENT PRODUCTION

At the touch of a finger, Command WorkStation provides expert-level control over your document workflows. Advanced prepress capabilities can be added through Fiery Impose,⁸ Compose,⁸ and JobMaster,⁸ which combine feature-rich document imposition and composition tasks into an integrated user interface.



⁶ Command WorkStation v6.3 or later required.

⁷ Option on imagePRESS Server M20.

⁸ Optional.

REMAIN AHEAD

FULL SUITE OF WORKFLOW SOLUTIONS

With a complete portfolio designed for a broad range of print volumes and supporting various paper supply and finishing options, the imagePRESS Lite C270 Series offers a selection of models with the right features at a value-driven price point.

Canon also offers a powerful suite of software solutions with upgrade paths as organizations grow. A tiered, modular approach allows an organization to implement a tailored solution that can help achieve efficiency and productivity goals at various budget levels.

CONTINUOUS IMPROVEMENTS

Technology and business demands are always evolving and so is the imagePRESS Lite Series. Canon continuously monitors customers' needs and seeks to identify new, in-demand features.

The innovative Unified Firmware Platform (UFP) allows Canon imagePRESS Lite models to be updated with cutting-edge features, new functionality, and security measures on an ongoing basis, ensuring that each device is not only capable, but also consistent.

UFP upgrades have added capabilities such as greater control over device security features, synchronized user settings across a compatible fleet, improved usability, expanded print and scan functionality, and much more.

EMBEDDED APP DEVELOPMENT

The imagePRESS Lite C270 Series can integrate with a range of powerful Canon and third-party software, thanks to the MEAP and MEAP Web embedded application platforms.

In addition, many types of businesses—law firms, real estate offices, religious organizations, and others—have unique, specialized information workflow needs, and app developers are able to implement tailored vertical solutions to help both specific industries and individual companies improve workflow performance.

ECO-FRIENDLY DESIGN

Canon's strong commitment to the environment is evident in its product design, manufacturing, and operation. The combination of fusing technologies and low-melting-point toner helps to minimize power requirements and reduce energy use during warm-up and while in standby. The imagePRESS Lite C270 Series can help encourage users to work more conscientiously while also allowing administrators to enable multiple settings that can help save energy and paper. The imagePRESS Lite C270/C265 models are ENERGY STAR® certified, rated EPEAT Gold, and offer a low Typical Electricity Consumption (TEC) rating.



CAPTIVATING OUTPUT

With advanced paper handling and multiple finishing capabilities, the imagePRESS Lite C270 Series can handle a wide range of jobs efficiently and cost-effectively.

From professional punching to folding and saddle-stitching, you can fulfill more requirements and help increase customer satisfaction, all while keeping more work in-house.



imagePRESS Lite C270 shown with optional accessories.

FEEDING OPTIONS

Stack Bypass (Standard)



Provides an additional capacity of up to 250 sheets.⁹ Supports paper types and stocks in weights up to 130 lb. Cover and banner sheets up to 51.2" in length.¹⁰

Stack Bypass-D1



Provides a 250-sheet capacity, supporting paper sizes up to 13" x 19" with a weight of up to 130 lb. Cover.¹¹

Letter Paper Deck Unit-E1



Designed for locations with higher enterprise work, this deck holds up to 3,500 sheets⁹ of letter-sized stocks and in weights up to 104 lb. index.

POD Deck Lite-C1



Designed for locations with space restrictions, this deck's 3,500-sheet⁹ capacity with Air Assist and Air Separation supports paper sizes up to 13" x 19.2" and envelopes in a range of sizes.

Multi-Drawer Paper Deck-E1



Provides additional paper capacity up to 5,000 sheets.⁹ Contains three cassette drawers, supports paper sizes up to 13" x 19", and holds up to 110 lb. Cover.



FINISHING OPTIONS

Document Inserting



Enables the insertion of slip sheets or preprinted covers for booklets and complex jobs.

Professional Punching



Ideal for manuals, reports, and presentations, this module offers numerous die patterns to take some of the manual labor out of the binding process.

Paper Folding



Offer promotional pamphlets, brochures, and more with the ability to produce Z-fold, C-fold, accordion fold, and double-parallel fold documents.

Staple Finishing



Corner and double-side staple up to 65 or 100 sheets⁹ in stacks up to 3,500 or 5,000 sheets.⁹ A side jogger helps keep media in straight or offset stacks.

Saddle Finishing



Create saddle-stitched booklets up to 80 or 100 pages⁹ on paper sizes up to 13" x 19.2". Saddle Press technology applies additional pressure when folding to help booklets exit flat.¹²

Booklet Trimming



Trim up to 1.1" off the face-side of the book for that professional-looking edge. Help maintain high productivity with a large-capacity trim waste bin and on-the-fly waste removal for continuous production.

⁹ Capacity based on 20 lb. Bond Letter.

¹⁰ Optional accessories required.

¹¹ Requires optional Paper Deck Connection Kit-B1 to attach to Multi-Drawer Paper Deck-E1. For alignment, add optional Stack Bypass Tray-D1.

¹² Saddle Press technology only available on the Booklet Finisher-AG1.

SPECIFICATIONS

Print Speed (Color/BW)	8.5" x 11"	C270: Up to 70/80 ipm C265: Up to 65/70 ipm
Scan Speed (Letter, 300 dpi)¹³	BW	Up to 270 ipm
	Color	Up to 270 ipm
First-Copy-Out Time	BW	C270: Approx. 4.4 seconds C265: Approx. 4.8 seconds
	Color	C270: Approx. 5.4 seconds C265: Approx. 5.9 seconds
Warm-Up Time	From Power ON:	Approx. 30 Seconds ¹⁴
	From Sleep Mode:	Approx. 30 Seconds ¹⁵
	Quick Startup Mode:	Approx. 4 Seconds ¹⁶
Print Resolution	Up to 2400 x 2400 dpi	
Paper Capacity¹⁷	Standard	Up to 3,550 Sheets
	Maximum	Up to 8,550 Sheets
Paper Size	Standard	5.5" x 7.17" to 13" x 19.2"
	Optional	3.94" x 5.83" to 13" x 51.2"
Paper Weight	14 lb. Bond to 130 lb. Cover	
Envelopes¹⁸	#10, Monarch ISO-C5, DL (Custom Size: 3.94" x 5.83" to 13" x 19.2")	
Long Sheets¹⁹	Up to 13" x 51.2"	
Typical Electricity Consumption (TEC) Rating²⁰	C270: 1.45 kWh C265: 1.29 kWh	
Power Source	C270: 208-240V, 60Hz 12 A C265: 120-127 V, 60 Hz 16 A	

OPTIONS

Print Servers	<ul style="list-style-type: none"> imagePRESS Printer Kit (Standard) imagePRESS Server M20
Feeding	<ul style="list-style-type: none"> Stack Bypass-D1 Stack Bypass Alignment Tray-D1 Long Sheet Feeding and Catch Tray-B1 Letter Paper Deck Unit-E1 POD Deck Lite-C1 Multi-drawer Paper Deck-E1 Tab Attachment Kit-F1 Envelope Attachment Kit-F1 Envelope Attachment Kit-G1 Envelope Feeder Attachment-H1 (for Multi-drawer Paper Deck-E1)
Finishing	<ul style="list-style-type: none"> Copy Tray-R2 Document Insertion Unit-R1 Insert/Fold Unit-K1 Multi Function Professional Puncher-C1 Paper Folding Unit-K1 Staple Finisher-AC1 Booklet Finisher-AC1 Jogger Kit-A1 2-/3-Hole Puncher Unit-A1 Staple Finisher-AG1 Booklet Finisher-AG1 Puncher Unit-BS1 Booklet Trimmer-G1

¹³ Based on 20 lb. Bond Letter.

¹⁴ Time from device power ON until copy-ready (not print reservation).

¹⁵ Time from exiting Sleep Mode to when printing is operational.

¹⁶ Time from device power ON to when key operations can be performed on the touch-panel display.

¹⁷ Capacity based on 20 lb. Bond Letter.

¹⁸ Envelope Attachment Kit required.

¹⁹ Optional accessories required.

²⁰ Based on ENERGY STAR product specifications for Imaging Equipment version 3.0.

As an ENERGY STAR® Partner, Canon U.S.A., Inc. has certified these models as meeting the ENERGY STAR energy efficiency criteria through an EPA recognized certification body. ENERGY STAR and the ENERGY STAR mark are registered U.S. marks. Canon, imagePRESS, imageRUNNER, and MEAP are registered trademarks of Canon Inc. in the United States and may also be registered trademarks or trademarks in other countries. uniFLOW is a registered trademark of NT-ware Systemprogrammierung GmbH. McAfee and the McAfee logo are trademarks of McAfee LLC in the US and/or other countries. All other referenced product names and marks are trademarks of their respective owners. Canon products offer certain security features, yet many variables can impact the security of your devices and data. Canon does not warrant that use of its features will prevent security issues. Nothing herein should be construed as legal or regulatory advice concerning applicable laws; customers must have their own qualified counsel determine the feasibility of a solution as it relates to regulatory and statutory compliance. Some security features may impact functionality/performance; you may want to test these settings in your environment. All features discussed may not apply to all Series and/or products and may be optional; please check with your Canon Authorized Dealer for details. Canon U.S.A. does not provide legal counsel or regulatory compliance consultancy, including without limitation, Sarbanes-Oxley, HIPAA, GLBA, Check 21 or the USA Patriot Act. Each customer must have its own qualified counsel determine the advisability of a particular solution as it relates to regulatory and statutory compliance. Subscription to a third-party cloud service required. Subject to third-party cloud service providers' Terms and Conditions. Some printer output images are simulated. Specifications and availability subject to change without notice. Not responsible for typographical errors.

©2022 Canon U.S.A., Inc. All rights reserved

Federal Law prohibits copying of certain documents. Violators may be subject to penalties. We suggest that you check with your own legal counsel. Canon U.S.A., Inc. and Canon Canada, Inc. intend to cooperate with Law Enforcement Agencies in connection with claims on unauthorized copying.

0522R3-LiteC270S-BRO-PDF-IH



usa.canon.com

