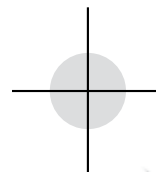
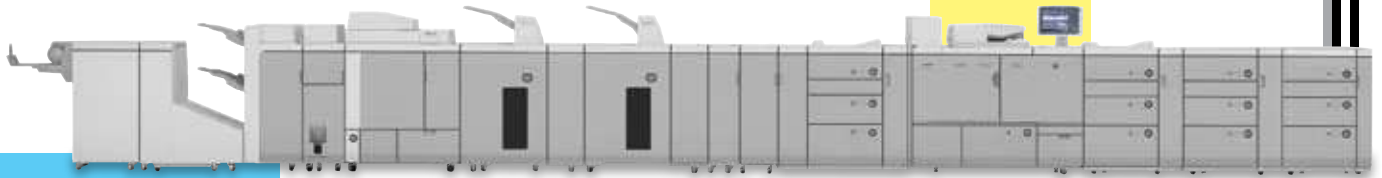


# Canon

 **imagePRESS®**  
1135P/1125P/1110P



## INTRODUCING THE CANON imagePRESS® 1135P/1125P/1110P SERIES



### The future of digital monochrome printing is here.

Canon's imagePRESS C7000VP digital presses brought new levels of image quality to the digital colour printing market. Canon's significant annual investment in Research and Development has helped to make the Canon brand synonymous with ultra-high-quality digital imaging. Now, Canon's imagePRESS 1135P/1125P/1110P digital presses are poised to revolutionize digital black-and-white printing. Built on the same core architecture as the imagePRESS C7000VP digital press, Canon has developed three extraordinary monochrome production presses that deliver uncompromising image quality, text quality, productivity, and versatility.

Prior to the introduction of the imagePRESS 1135P/1125P/1110P, high-quality digital black-and-white presses were out of reach for most, due to the acquisition cost. No longer is this true. With the imagePRESS 1135P/1125P/1110P digital presses, Canon has engineered a press that delivers the extraordinary image quality you expect from an imaging leader. Subsequently, Canon understands that you need a press that is modular and can be augmented as your business needs change and grow. For this reason, Canon has a variety of finishing options available. Lastly, there is no one-size-fits-all mentality for black-and-white production printing.

For this reason the marking engine is available in three different speeds consisting of 135, 125, and 110 pages per minute, depending upon your production requirements.

With true 1200 x 1200 dpi output and 256 tonal gradations, the imagePRESS 1135P/1125P/1110P digital presses produce consistently crisp text and beautifully detailed halftones on a wide range of media types and sizes. And it can print up to 8,100 impressions per hour for unprecedented productivity that will move your print job through the shop quickly.

#### THE imagePRESS 1135P/1125P/1110P DIGITAL PRESSES ARE IDEAL FOR:

- **In-plant print shops and central reprographic departments** that want to save time and money on a wide variety of complex print projects and deliver more value to the organization.
- **Commercial printers** that want to continue to expand their digital print business and increase their black-and-white print revenues.
- **Quick printers, digital printers, and service bureaus** that want the versatility to print and finish a higher number of different types of jobs each day.

## The right workflow solutions for your business



Canon understands your business is more than just printing, that it's a system including both hardware and software applications. For this reason, we offer **imagePRESS Workflow Solutions**, a suite of hardware and software solutions to help grow your business. From the creative aspects of a job through finishing, Canon has you covered.

As your business progresses, you may want to include more automation for your customers such as a Web-to-Print solution that will allow them to submit print jobs via the Internet. Not only will this provide a value-added service for your customers, it will also create a path to your business that customers will visit again and again, without the need for any human intervention to take the order. The imagePRESS Workflow Solutions program will deliver, connect, and streamline your workflow.

Workflow solutions are available to help you efficiently produce print. With a variety of make-ready tools available, creating complex jobs with tabs, inserts, paper substitutions, and covers take only a few clicks of a mouse to produce a print-ready document. For additional productivity, solutions are available that will automatically perform job splitting, which enables you to send a print job to multiple devices to produce work even faster.

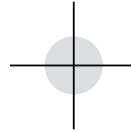


**Deliver** – Canon will *deliver* a complete solution and fill in the missing pieces to existing workflows.

**Connect** – Many organizations have already made large investments in their workflow and they need Canon to *connect* into their existing workflow.

**Simplify** – The final goal is to deliver a solution that builds efficiency within the workflow and *simplifies* your production processes.

# IMAGE QUALITY



## Superb print quality that rivals offset lithography

At Canon we take the art and science of print to the next level. The imagePRESS 1135P/1125P/1110P digital presses feature revolutionary technologies that you won't find in other black-and-white print engines. The goal is to deliver to you an engine that not only produces the precise halftone images, sharp text, and dense blacks, but also provides you with a system that will seamlessly integrate into your current workflow, be extremely productive, and enhance your profitability.

## REDEFINING DIGITAL PRINT MONOCHROME QUALITY

Through our extensive, ongoing investments in research and development, Canon has gained an extraordinarily deep understanding of every phase of the printing process. Canon is a leader in imaging technologies that include solutions such as our digital cameras that allow customers to express themselves through imagery. Our high-quality scanners provide customers the ability to digitize originals that provide the most pleasing representation. And our large-format printers accurately reproduce output with incredible realism. As is expected of a leader in imaging technologies, Canon has applied that same depth of understanding to monochrome digital printing.



---

## A QUALITY DIFFERENCE YOU CAN SEE

With a true resolution of 1200 x 1200 dpi and 256 tonal gradations, the imagePRESS 1135P/1125P/1110P digital presses can produce the fine lines needed for small font text and detailed technical diagrams as well as the rich, deep blacks needed for superb halftones. To add visual depth to each image, the imagePRESS 1135P/1125P/1110P digital presses can render very fine details through the entire tonal range of the image, resulting in exceptional image quality.



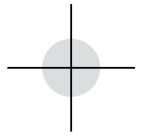
## ACCURATE REGISTRATION FOR PROFESSIONALLY FINISHED DOCUMENTS

To ensure each page is accurately aligned front to back, Canon's active registration system makes real-time adjustments during printing. This level of precision and accuracy is crucial for producing the most professional-looking manuals, booklets, brochures, and books.

## CONSISTENCY FROM THE FIRST PRINT TO THE LAST

To make sure that the last piece in every job looks just as good as the first one, the imagePRESS 1135P/1125P/1110P digital presses incorporate twin-sleeve technology that substantially improves the uniformity of the toner and ensures that densities remain consistent throughout the job.





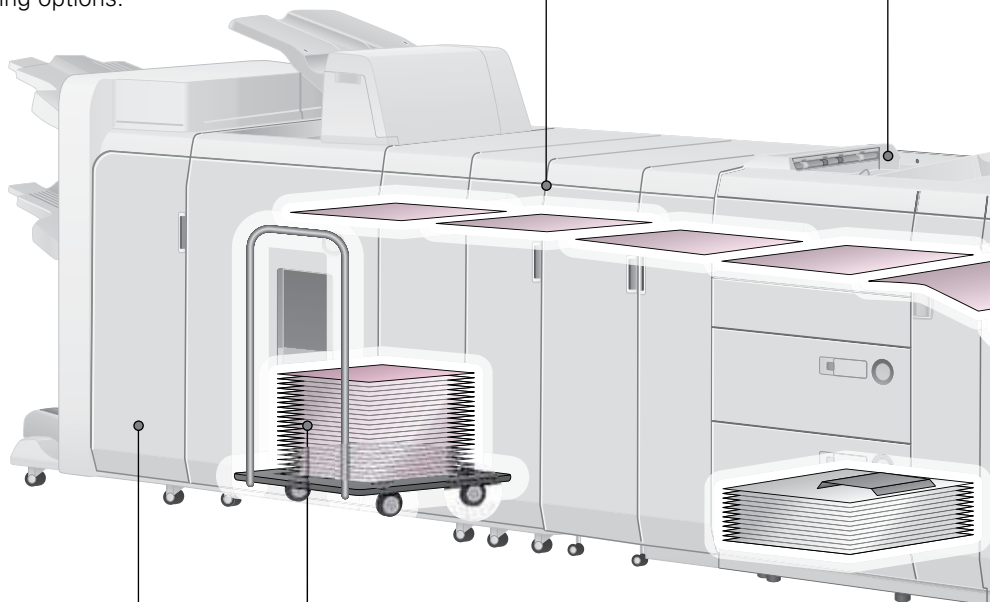
## TAKE A CLOSER LOOK AT ALL THE FEATURES

See how Canon's combination of imaging technology, media handling, production (P) in-line finishing, and document scanning can help you add value to your black-and-white printing.



**Professional Punch Unit** provides accurate hole-punching capabilities for advanced binding options.

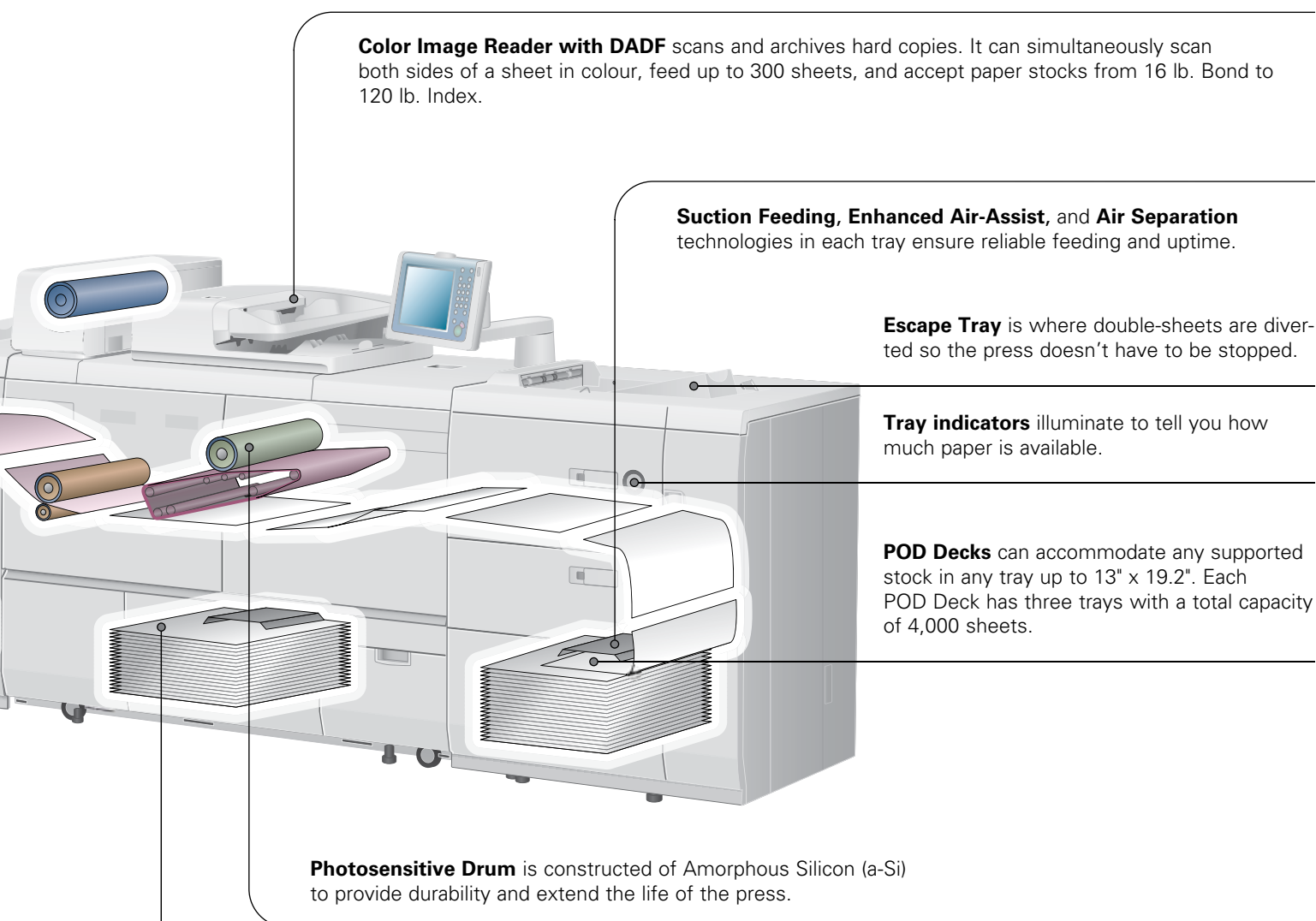
**Document Insertion Unit** combines offset litho-printed material or pages from a digital colour press with monochrome pages.



**Saddle Finisher** creates saddle-stitched booklets up to 100 pages (25 sheets). Plus, the Saddle Finisher corner-staples and double-staples up to 100 sheets. It has a stacking capacity up to 5,000 sheets.

**High-Capacity Stacker** can stack up to 10,000 sheets of letter-sized paper or 5,000 sheets of tabloid-size paper. Documents can be stacked straight or offset, depending on how they will be finished.





**Standard Paper Tray** has suction feeding, enhanced-air assist, and air separation technologies. This tray accommodates 2,000 sheets.

# PRODUCTIVITY



## EMPOWER YOUR PRESSROOM TO DO MORE

### **Easily set up jobs to run unattended**

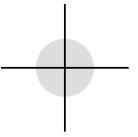
Enhanced productivity is the cornerstone of these Canon imagePRESS 1135P/1125P/1110P digital presses. These models are built to be easy-to-use, consistent, and dependable. With the advanced feeding technologies incorporated into the press, the press will run without missing a beat. Suction feeding, which is standard on the POD Deck, picks up the paper with air instead of rollers. This is similar in design to how a commercial press functions, without the large capital outlay. In addition, the press can run unattended for hours because of its high-capacity toner hopper and ability to hold up to 14,000 sheets, further increasing the productivity the press will deliver.

### **MULTIPLE SPEEDS FOR VARYING PRINT ENVIRONMENTS**

The imagePRESS 1135P/1125P/1110P digital presses were designed from the ground up to ensure that those tight deadlines and last minute jobs are kept on schedule – and that revenue flows in!







## RUN THE PRESSES WITHOUT INTERRUPTION

A combination of features work together to maximize productivity and keep the presses humming.

**“On-the-Fly” paper and toner replacements** lets you maintain productivity by allowing you to refill paper trays, load toner, and empty waste toner without stopping the press.



Toner Station

**Multifeed Detection** is another productivity feature that is designed to keep your press moving. In the unlikely event two or more sheets of paper enter the press from the POD Deck at the same time, the sheets are diverted to an escape tray on top of the POD Deck. This all occurs automatically—and the press never stops or misses a beat. Talk about productivity!

**Durable Parts** help minimize downtime. The Canon imagePRESS 1135P/1125P/1110P digital presses are built for productivity. The parts for this series were designed for long run-lengths and increased longevity. For this reason, the developing drum at the heart of the press is constructed of Amorphous Silicon (a-Si).

# VERSATILITY



## FLEXIBILITY IN PAPER HANDLING AND IN-LINE FINISHING STREAMLINE THE PRODUCTION OF ALL TYPES OF JOBS

**Plus, it's easy to update the imagePRESS 1135P/1125P/1110P digital presses if your print requirements change.**

### CONFIGURE YOUR PRESS FOR TODAY'S NEEDS AND TOMORROW'S OPPORTUNITIES

The imagePRESS 1135P/1125P/1110P digital presses can be custom-configured for any type of print environment that needs to efficiently print high-quality, on-demand monochrome output. Whether you simply want an advanced print engine that can improve the look of your monochrome work, a full-fledged, professional book production system, or anything in between, Canon can provide you with the right mix of workflow and finishing tools. As your business grows, the imagePRESS 1135P/1125P/1110P digital presses grow with you.

Canon can help you as your business expands. If you want to move into the lucrative market of on-demand book publishing, the optional perfect binder is a wonderful addition to your system. Another component that will allow you to offer value-added services is the optional Booklet Trimmer with the optional Two-Knife Trimmer. Wouldn't it be nice if you could create a saddle-stitched booklet that bleeds on all edges of the sheet? You can—and easily—with these accessories.

### KEEP PLENTY OF PAPER READY TO RUN

Your press and your customers should not be limited to a few stocks to run. The imagePRESS 1135P/1125P/1110P digital presses can handle a wide range of stock to meet a spectrum of applications, from statement and book printing to promotional documents and manuals. These digital presses have the ability to handle it all.

Whether your shop does a high volume of short-run jobs or longer runs of thick books and manuals, the Canon imagePRESS 1135P/1125P/1110P digital presses can keep up. Each press comes with one standard tray that can handle up to 2,000 sheets and one 4,000-sheet POD Deck. For higher volume, unattended printing of books and manuals, you can add up to three POD Decks, making it possible to have 14,000 sheets ready to print.\*



High-Capacity Stacker

### SIMPLIFY THE TASK OF SWITCHING STOCKS

With the **Media Library** on the imagePRESS 1135P/1125P/1110P digital presses you can easily manage and select stocks from one central location. After details about the properties of each paper have been entered, you can select the appropriate stock for each job and ensure optimal press performance during the print run. The imagePRESS 1135P/1125P/1110P digital presses will automatically make the internal pressure and heat adjustments to ensure your job will print flawlessly.

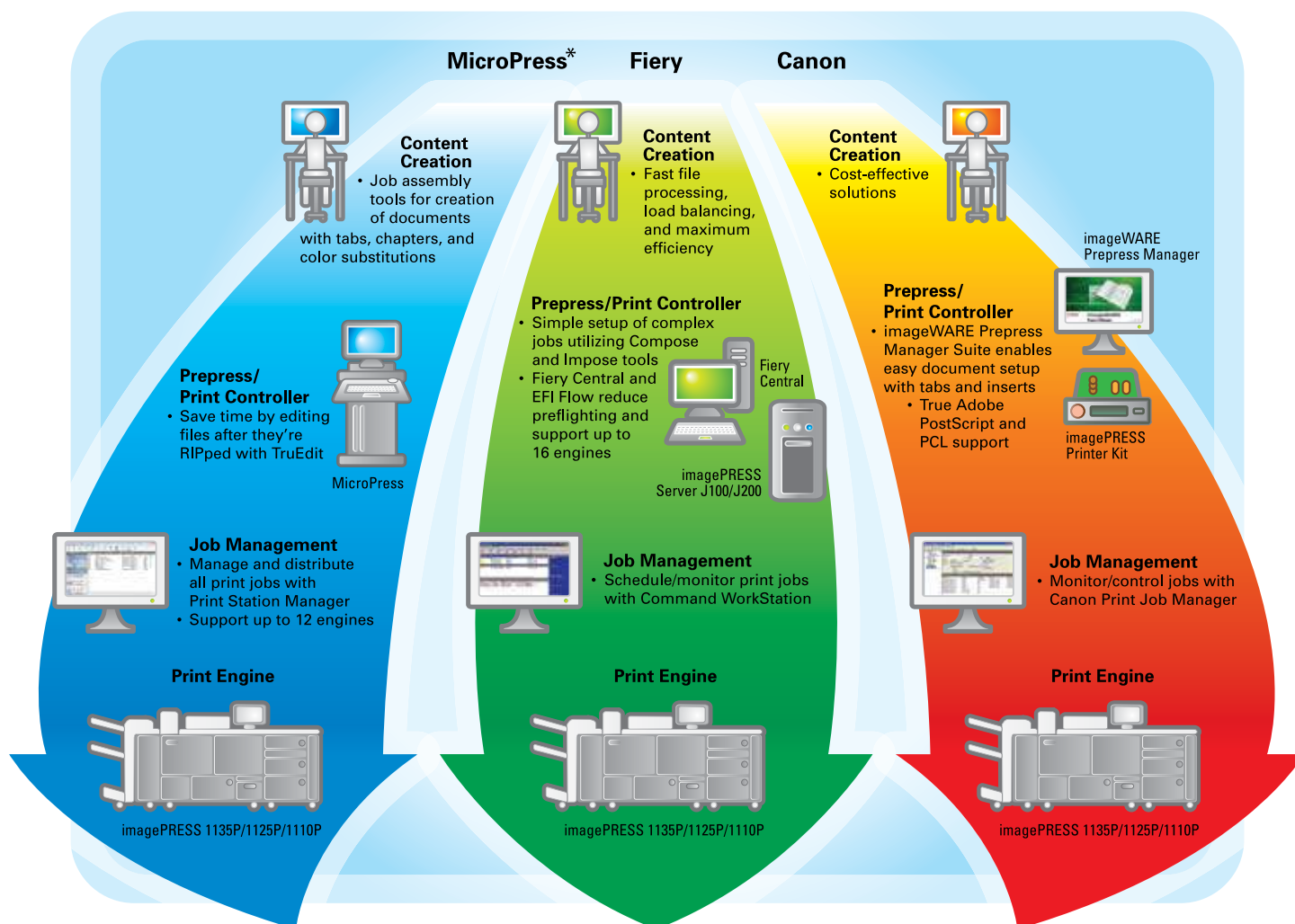
\*Requires either the imagePRESS 1135P or the imagePRESS 1125P to connect three (3) POD Decks.

# ADVANCED WORKFLOW OPTIONS UP FRONT PROVIDE FULL CONTROL OVER PRODUCTION



Canon understands your workflow is unique. For this reason, the imagePRESS Workflow Solutions program exists to help you with a customized solution to run your business as efficiently as possible. Based on the nature and volume of your current jobs (and the type of work you plan to do in the future), we can recommend the right combination of make-ready tools and processing power that can help you complete the highest number of jobs each day with the fewest number of operators. Below is a workflow chart that illustrates a few of the many workflow options available depending upon your requirements. Workflow Solutions are versatile in that they may be configured for your requirements. Canon can help you design any workflow solution to help you meet your goals.

## WORKFLOW OPTIONS



\* Please check with your authorized Canon representative for availability.

# Specifications



## MARKING ENGINE

Technology:	Laser Electrostatic Transfer System
Resolution:	Up to 1200 x 1200 dpi
Halftones:	256-Level Greyscale
Print Speed	
Simplex:	135/125/110 (Letter) 77/74/68 (11" x 17") 67/62/55 (Letter) 38/37/34 (11" x 17") 13" x 19.2"
Duplex/Perfect:	
Maximum Paper Size:	2,000 Sheets (20 lb. Bond)
Standard Paper Feeding:	14 lb. Bond to 110 lb. Cover (52gsm to 300gsm) (All Trays)
Acceptable Paper Weight:	
Duplex/Perfect:	Automatic Duplex/Perfect Any Supported Stock
Power Source:	208V/30A+208V/15A
Dimensions (H x W x D):	54.12" x 54.62" x 31.87" (1373mm x 1387mm x 809mm)
Weight:	1,103 lb. (500kg)

## Color Image Reader-L1 (Optional)

Document Size:	Statement to 11.75" x 17"
Resolution:	Up to 600 x 600 dpi, 256 Gradations
Dimensions (H x W x D):	2.8" x 25" x 23.1" (74mm x 635mm x 590mm)
Weight:	26.4 lb. (12kg)
Power Supply:	From Main Unit

## DADF (Duplex Automatic Document Feeder) (Optional)

Tray Capacity:	300 sheets (20 lb. Bond)
Scanning Speed B/W:	Up to 200 ipm (300 dpi) Up to 120 ipm (600 dpi)*
Scanning Speed Colour:	Up to 80 ipm (300 dpi) Up to 40 ipm (600 dpi)*
Acceptable Original Size:	Statement to 11" x 17"
Acceptable Paper Weight:	16 lb. Bond to 120 lb. Index (50gsm to 220gsm)
Dimensions (H x W x D):	7.12" x 25" x 23.12" (179mm x 633mm x 588mm)
Weight:	59.3 lb. (26.9kg)
Power Source:	From Main Unit

## POD Deck-C1 (Standard)

Paper Capacity:	4,000 Sheets (1,000 x 2 + 2,000) (20 lb. Bond)
Maximum Paper Size:	13" x 19.2"
Paper Weight:	14 lb. Bond to 110 lb. Cover (52gsm to 300gsm)
Dimensions (H x W x D):	43.12" x 39.37" x 31.25" (1095mm x 745mm x 792mm)
Weight:	499 lb. (226kg)
Power Source:	120-127VAC, 60Hz, 8A

## POD Deck-C1 and Secondary POD Deck-C1 (Optional)

Paper Capacity:	4,000 Sheets (1,000 x 2 + 2,000) (20 lb. Bond)
Maximum Paper Size:	13" x 19.2"
Paper Weight:	14 lb. Bond to 110 lb. Cover (52gsm to 300gsm)
Dimensions (H x W x D):	43.12" x 61.5" x 31.25" (1095mm x 1561mm x 792mm)
Weight:	997 lb. (452kg)**
Power Source:	120-127VAC, 60Hz, 8A

## POD Deck-C1 and Secondary POD Deck-C1 (2) (Optional)\*\*\*

Paper Capacity:	4,000 Sheets (1,000 x 2 + 2,000) (20 lb. Bond)
Maximum Paper Size:	13" x 19.2"
Paper Weight:	14 lb. Bond to 110 lb. Cover (52gsm to 300gsm)
Dimensions (H x W x D):	43.12" x 93.62" x 31.25" (1095mm x 2377mm x 792mm)
Weight:	1,495 lb. (678kg)▲
Power Source:	120-127VAC, 60Hz, 8A

## Multi-Drawer Document Insertion Unit-A1 (Optional)

Paper Capacity:	4,000 Sheets (1,000 x 2 + 2,000) (20 lb. Bond)
Maximum Paper Size:	13" x 19.2"

Paper Weight:	14 lb. Bond to 110 lb. Cover (52gsm to 300gsm)
Dimensions (H x W x D):	43.12" x 42.5" x 31.25" (1095mm x 1079mm x 792mm)
Weight:	554 lb. (251kg)
Power Source:	120V/8A

## Finisher-AF1/Saddle Finisher-AF2 (Optional)

Number of Trays:	2/3
Tray Capacity	
Top Tray:	3,000 Sheets (20 lb. Bond)
Lower Tray:	2,000 (20 lb. Bond)
Saddle-Stitch Tray:	30 Booklets or Limitless
Staple Positions:	Corner-Stapling, Double-Stapling
Acceptable Paper Weight	
Finisher:	14 lb. Bond to 110 lb. Cover (52gsm to 300gsm)
Saddle Finisher:	14 lb. Bond to 110 lb. Cover (52gsm to 300gsm)

## Acceptable Paper Size

Stapling:	Executive, Statement-R, Letter-R, Letter, Legal, 11" x 17"
Sheet Stacking:	Up to 13" x 19.2"
Saddle Finisher:	Letter-R, Legal, 11" x 17", 12" x 18"
Max. Stapling Capacity:	Up to 100 Sheets
Max. Booklet Stapling	
Capacity:	Up to 25 Sheets Saddle-Stitched
Dimensions (H x W x D):	46.5" x 31.25" (35.37")▲ x 35.7" (1180mm x 800mm (890mm)▲ x 792mm)

Weight	
Finisher:	287 lb. (130kg)
Saddle Finisher:	396 lb. (180kg)
Power Source:	120V/15A

## Puncher Unit-BB1

### (Option for Finisher-AF1/Saddle Finisher-AF2)

Acceptable Paper Weight:	14 lb. Bond to 73 lb. Cover (52gsm to 200gsm)
--------------------------	--

Paper Sizes	
2-Hole:	Legal, Letter-R
3-Hole:	11" x 17", Letter
Punch Speed:	Up to 135 ppm (Depends on Speed of Marking Engine)
Weight:	6.7 lb. (3kg)
Power Source:	From Finisher

## High-Capacity Stacker-E1 (Optional)

Offset Stack Capacity:	10,000 Sheets (Letter) (20 lb. Bond)
Top Tray Capacity:	1,000 Sheets (20 lb. Bond)
Maximum Paper Size:	13" x 19.2"
Acceptable Paper Weight:	14 lb. Bond to 110 lb. Cover (52gsm to 300gsm)

Number of Units	
Connected at Once:	Up to 2
Dimensions (H x W x D):	53.62" x 39.25" x 31.25" (1362mm x 997mm x 792mm)
Weight:	463 lb. (210kg)
Power Source:	120V/15A

## Booklet Trimmer-D1 (Optional)

Margin Trimming:	Fore-Edge Trim
Trim Amount:	0.08" to 0.78" (2mm to 20mm)
Trim Thickness:	50 Sheets
Waste Tray Capacity:	1,500 Sheets (With 0.78" Trim, 20 lb. Bond)

Acceptable Paper Weight:	14 lb. Bond to 110 lb. Cover (52gsm to 300gsm)
--------------------------	---

Output Tray Capacity:	30 Booklets
Dimensions (H x W x D):	62" x 30.37" x 41" (1575mm x 770mm x 1040mm)
Weight:	335 lb. (152kg)
Power Source:	From Saddle Finisher

## Two-Knife Trimmer-A1 (Optional)

Margin Trimming:	Top and Bottom Trim
Trim Amount:	0.08" to 0.59" (2mm to 15mm)
Trim Thickness:	50 Sheets
Waste Tray Capacity:	750 Sheets (Two-Sided Trimmed)
Acceptable Paper Weight:	14 lb. Bond to 110 lb. Cover (52gsm to 300gsm)

Output Tray Capacity:	30 Booklets
Dimensions (H x W x D):	21.12" x 30.37" x 41" (536mm x 770mm x 1040mm)
Weight:	319 lb. (145kg)
Power Source:	120V/15A

## Perfect Binder-C1 (Optional)

Cutting Method:	Stack Rotation 3-Direction or 1-Direction Cut
-----------------	--

Finished Book Size	
Width:	8" to 11.62" (203mm x 297mm)
Length:	5.37" to 8.5" (138mm x 216mm) (After 3-Direction Cut)

Body Paper Weight:	14 lb. Bond to 90 lb. Index (52gsm to 163gsm)
--------------------	--

Cover Weight:	24 lb. Bond to 110 lb. Cover (90gsm to 300gsm)
---------------	---

Book Thickness:	10 to 200 Sheets (20 lb. Bond) (Up to 25mm)
-----------------	--

Glue Warm-Up Time:	440 Seconds
Trim Range:	Adjustable in .0197" (0.5mm) Increments
Side:	0.26" to 1.94" (6.5mm to 49mm)
Top and Bottom:	0.52" to 3.11" (13mm to 79mm)
Dimensions (H x W x D):	36.97" x 31.12" x 51.25" 922mm x 791mm x 1300mm
Weight:	674.6 lb. (306kg)
Power Source:	208V/15A

## Paper Folding Unit-F1 (Optional)

Fold Type	
V-fold:▲▲	Letter-R
Z-fold:	Legal,▲▲ 11" x 17", Letter-R ▲▲
C-fold:	Letter-R
Zigzag Fold:	Letter-R
Supported Media Weights:	14 lb. Bond to 28 lb. Bond (52gsm to 105gsm)
Power Source:	From Finisher
Dimensions (H x W x D):	46.87" x 13.25" x 31.25" (1190mm x 336mm x 793mm)
Weight:	144 lb. (65kg)

## Professional Puncher and Integration Unit-B1 (Optional)

Paper Size:	Letter
Supported Media Weights:	20 lb. Bond to 80 lb. Cover (75gsm to 216gsm)
Productivity:	Up to 135 ppm (Depends on Speed of Marking Engine)
Chip Tray Capacity:	25,000 Sheets
Punch Patterns:	3H, 5H, Velo Bind, 11H, Plastic Comb, 19H, Twin Loop 21H/32H, ProClick 32H, Color Coil 44H
Power Source:	120V/15A
Dimensions (H x W x D):	41" x 22.5" x 31.25" (1040mm x 560mm x 792mm)
Weight:	264.2 lb. (120kg)

\*System Upgrade RAM-B1 required for 600 dpi colour scanning

\*\*Combined weight of the POD Deck-C1 and Secondary POD Deck-C1

\*\*\*Requires either the imagePRESS 1135P or the imagePRESS 1125P to connect three (3) POD Decks.

■ Combined weight of the POD Deck-C1 and Secondary POD Deck-C1 (2)

▲ When the Extension tray is pulled out

▲▲ Only with Finisher-AF1/Saddle Finisher-AF2



1-800-OK CANON

www.canon.ca

Adobe and PostScript are registered trademarks or trademarks of Adobe Systems Incorporated in the United States and/or other countries. EFI, Command WorkStation, and Fiery are registered trademarks of Electronics for Imaging, Inc. in the U.S. Patent and Trademark Office and/or certain other foreign jurisdictions. CANON and IMAGEPRESS are registered trademarks of Canon Inc. in the United States and may also be registered trademarks or trademarks in other countries. IMAGEANYWARE is a trademark of Canon. All other referenced product names and marks are trademarks of their respective owners and are hereby acknowledged. Specifications and availability subject to change without notice. ©2009 Canon Canada, Inc. All rights reserved.

0132W200