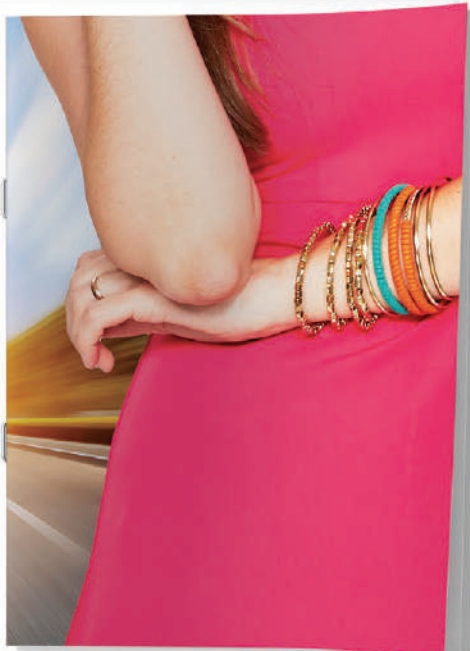
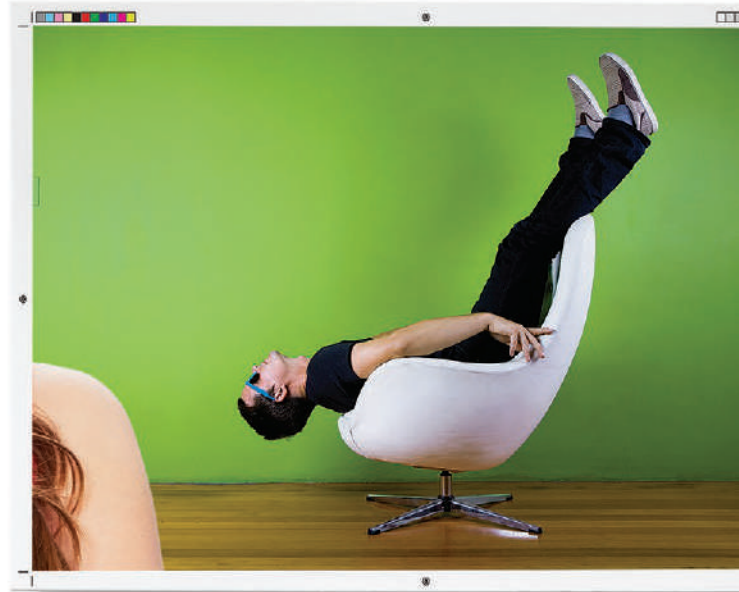
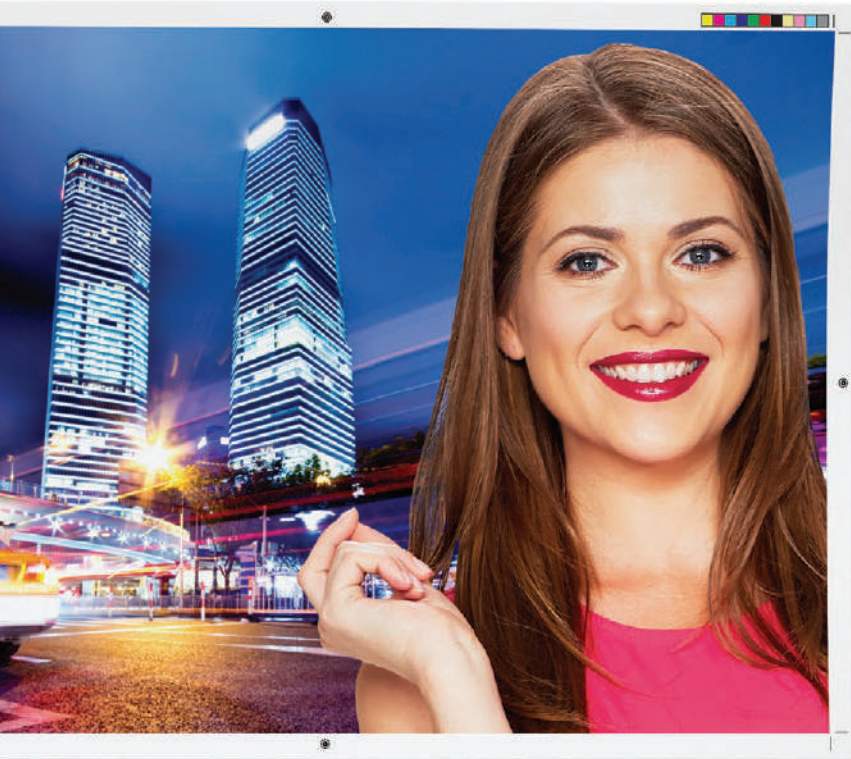


# Canon

CANON SOLUTIONS AMERICA

 imagePRESS C60

## Color Digital Press



Now advertising agencies, design studios, and production departments have a great partner—the imagePRESS C60 Color Digital Press.

**UNLEASH THE FULL POWER OF PRINT.**

 CANON SEE IMPOSSIBLE

# Creativity and innovation. Simply stunning.



## EMPOWER CREATIVITY

Impress clients with compelling, vibrant images. Brilliant advances in design deliver precise 2400-dpi resolution, highly accurate registration, and truly consistent output. A wide color gamut helps ensure exacting color matches to brand colors and original art.

The imagePRESS C60 color digital press brings ideas to life in brilliant color, and, when combined with in-line finishing, you can efficiently produce applications such as layout proofs, press proof comps, and packaging markups.

## MANAGE COLOR SIMPLY

Graphic professionals will appreciate the advanced color-management tools of the server-type imagePRESS Server F200\* and the embedded imagePRESS Server G100,\* the first DFEs built on EFI's state-of-the-art Fiery FS150 Pro platform. Accurately match color to other presses and optimize workflows with true simulations that yield predictable color results.

## BRING YOUR IDEAS TO LIFE

At Canon, we truly understand the creative process and the production environment. That's why you can count on our solutions to meet your complex color demands with high efficiency and reliability. Together, we can make a winning combination.

## PRODUCT SPECIFICATIONS

### MARKING ENGINE

Technology:	32-beam R-VCSEL Laser Technology
Resolution:	Up to 2400 x 2400 dpi
Halftones:	256-level Grayscale
Print Speed:	8.5" x 11": Up to 60 ipm 11" x 17": Up to 32 ipm 12" x 18": Up to 32 ipm 13" x 19": Up to 30 ipm
Paper Size:	3.94" x 5.83" to 13" x 19.2"
Paper Feeding	
Standard:	1,650 Sheets (20 lb. Bond)
Maximum:	7,650 Sheets (20 lb. Bond)
Paper Weight:	14 lb. Bond to 110 lb. Cover* (52 gsm to 300 gsm)
Envelopes:**	#10 Business, Monarch, 6" x 9", 9" x 12", 10" x 13"
Duplexing/Perfecting:	Automatic Duplex/Perfect Any Supported Stock
Dimensions (H x W x D):	56.1" x 60.2" x 36.8" Includes Operator Panel

### INPUT ACCESSORIES\*\*\*

#### Multi-Drawer Paper Deck-B1

Paper Capacity:	6,000 Sheets (20 lb. Bond)
Paper Size:	5.5" x 7.2" to 13" x 19.2"
Paper Weight:	14 lb. Bond to 110 lb. Cover (52 gsm to 300 gsm)
Dimensions (H x W x D):	40.9" x 37.4" x 31.4"

#### POD Deck Lite-B1

Paper Capacity:	3,500 Sheets (20 lb. Bond)
Paper Size:	5.5" x 5.83" to 13" x 19.2"
Paper Weight:	14 lb. Bond to 110 lb. Cover (52 gsm to 300 gsm)
Envelopes:**	#10 Business, Monarch, 6" x 9", 9" x 12", 10" x 13"
Dimensions (H x W x D):	22.5" x 28.2" x 27.0"

#### Stack Bypass-B1

Paper Capacity:	100 Sheets (20 lb. Bond)
Paper Size:	3.94" x 5.83" to 13" x 19.2"
Paper Weight:	14 lb. Bond to 110 lb. Cover (52 gsm to 300 gsm)
Envelopes:	#10 Business, Monarch, 6" x 9", 9" x 12", 10" x 13"

#### Duplex Color Image Reader-H1

Document Size:	Statement to 11" x 17"
Resolution:	Up to 600 x 600 dpi
Scan Speed	
BW (duplex):	Up to 300 dpi    Up to 600 dpi
Color (duplex):	Up to 200        Up to 120
	Up to 140        Up to 70

### FINISHING ACCESSORIES\*\*\*

#### Professional Puncher-B1/Integration Unit-A1†

Original Size:	LTR, LTR-Tab Paper
Paper Weight:	20 lb. Bond to 80 lb. Cover (75 gsm to 216 gsm)
Die Set Patterns:	Loose Leaf 3-Hole/5-Hole, Velo Bind 11-Hole, Plastic Comb 19-Hole, Twin Loop 21-Hole/32-Hole, ProClick 32-Hole, Color Coil 44-Hole
Dimensions (H x W x D):	40.9" x 22.0" x 31.2"††

#### Finisher-AM1/Saddle Finisher-AM2

Tray Capacity	
Top Tray:	1,000 Sheets (20 lb. Bond)
Lower Tray:	4,000 Sheets (20 lb. Bond)
Saddle-Stitch Tray:	30 Booklets or Limitless
Staple Positions:	Corner Stapling, Double Stapling
Paper Weight:	14 lb. Bond to 110 lb. Cover (52 gsm to 300 gsm)
Paper Size	
Stapling:	Executive, Letter-R, Letter, Legal, 11" x 17", Custom Size
Saddle Finisher:	Letter-R, Legal, 11" x 17", 12" x 18", 13" x 19", Custom Size
Stapling Capacity:	Up to 100 Sheets
Booklet Stapling Capacity	
Uncoated:	Up to 25 Sheets
Coated:	Up to 10 Sheets
V-Folding:	Up to 5 Sheets without Stitch (20 lb. Bond)
Dimensions (H x W x D):	AM1: 48.8" x 35.0" x 31.2" AM2: 48.8" x 41.7" x 31.2"

#### Staple Finisher-T1/Booklet Finisher-T1

Tray Capacity	
Escape Tray:	250 Sheets (20 lb. Bond)
Top Tray:	1,300 Sheets (20 lb. Bond)
Lower Tray:	2,450 Sheets (20 lb. Bond)
Saddle-Stitch Tray:	Up to 25 Booklets
Staple Positions:	Corner Stapling, Double Stapling
Paper Weight	
Top/Lower Trays:	14 lb. Bond to 110 lb. Cover (52 to 300 gsm)
Escape Tray:	14 lb. Bond to 140 lb. Index (52 to 256 gsm)
Paper Size	
Stapling:	Executive, Letter-R, Letter, Legal, 11" x 17"
Saddle-Stitching:	Letter-R, Legal, 11" x 17", 12" x 18"
Stapling Capacity:	Up to 50 Sheets
Booklet Stapling Capacity:	Up to 16 Sheets
Dimensions (H x W x D):	44.1" x 30.0" x 25.8"

\* Engine cassette supports 52 gsm to 220 gsm.

\*\* Requires Envelope Attachment Kit.

\*\*\* Optional.

† Must connect to Finisher-AM1 or Saddle Finisher-AM2.

†† Size includes Professional Puncher Integration Unit-A1.

For more information, call or email  
1.800.815.4000 CSA.CANON.COM

**Canon**

CANON SOLUTIONS AMERICA

\* Either imagePRESS Server F200 or imagePRESS Server G100 is required.

Canon and imagePRESS are registered trademarks of Canon Inc. in the United States and may also be registered trademarks or trademarks in other countries. All other referenced product names and marks are trademarks of their respective owners. All printer output images are simulated. Specifications and availability subject to change without notice. Not responsible for typographical errors.

Federal Law prohibits copying of certain documents. Violators may be subject to penalties. We suggest that you check with your own legal counsel. Canon U.S.A., Inc. and Canon Canada, Inc. intend to cooperate with Law Enforcement Agencies in connection with claims on unauthorized copying.  
©2015 Canon U.S.A., Inc. All rights reserved.

CSA-11/14-251  
0215R3-CSAC60-PDF-IH

