

Canon



PRODUCTION SOLUTIONS



 **imagePRESS™**
C7000VP



PRODUCTION SOLUTIONS

INTRODUCING THE NEW CANON imagePRESS C7000VP DIGITAL PRESS, BUILT FOR THE WAY YOU WORK TODAY—AND WILL GROW YOUR BUSINESS TOMORROW.



Canon's significant annual investment in Research and Development has helped make the Canon brand synonymous with ultra-high-quality digital imaging. With the introduction of the new imagePRESS C7000VP digital press, Canon will once again revolutionize the colour marketplace. The Canon imagePRESS C7000VP digital press is the next generation in digital printing technology that will redefine expectations of image quality, productivity, and versatility.

This is a powerful production engine built for high-quality, on-demand printing and value-added services, such as variable data printing. The imagePRESS C7000VP digital press produces output that rivals offset image quality while maintaining superior colour consistency and production reliability.

With true 1200 x 1200 dpi colour and black-and-white output at a consistent speed of 70 pages per minute (letter), regardless of weight, the imagePRESS C7000VP digital press is ideal for:

- **Commercial printers** looking to expand their services and revenue opportunities while offering customers uncompromised print quality;
- **Quick printers and digital printers** that want to increase production volume by offering enhanced image quality on a greater variety of paper stocks; and,
- **In-plant facilities** that need to maintain control over colour printing costs, quality, and turnaround time.

IT'S ALL ABOUT YOUR WORKFLOW AND APPLICATIONS

Canon recognizes the need to bring to market more than just a superior digital press. That's why we're offering **imagePRESS Workflow Solutions**, a suite of hardware and software solutions to help printers grow their digital print businesses. Canon is committed to integrating with industry standards such as JDF and PPML to offer and support the latest in workflow technology, from creative and submission throughout the entire workflow to finishing and distribution.

As we look to the future, you may want to build more automation into your process, implement a Web-to-Print solution, or expand your variable data printing capabilities. imagePRESS Workflow Solutions will help you grow and evolve in your business and take advantage of existing and new technologies that will benefit all print environments.

imagePRESS Workflow Solutions is being brought to market to deliver, connect, and simplify your workflow.

Deliver – Canon will *deliver* a complete solution and fill in the missing pieces to existing workflows.

Connect – Many environments have already made large investments in their workflow and they need Canon to *connect* into their existing workflow.

Simplify – The final goal is to deliver a solution that builds efficiency within the workflow and *simplify* your production processes.



IMAGE QUALITY

ULTRA-HIGH-QUALITY PRINTING— NOTHING LESS THAN YOU'D EXPECT

CANON'S COMMITMENT TO QUALITY, A TRADITION YOU CAN DEPEND ON

Incorporated into the imagePRESS C7000VP digital press is Canon's unique understanding of photography, colour science, colour imaging, and workflow. The result is an ultra-high-quality, high-speed digital press that fully integrates with the way professionals work and profit in the dynamic world of digital printing.

A DIFFERENCE IN QUALITY YOU CAN SEE—AND FEEL

The imagePRESS C7000VP digital press features revolutionary technologies you won't find in any other colour device. At the core of the imagePRESS system is an entirely new print engine and toner technology that ensure outstanding image quality, reliable and consistent colour, and detailed, sharp images on gloss, matte, and specialty stocks to produce **output that looks and feels like offset printing.**

"OPTIMIZED" TONER TECHNOLOGY FOR A SMOOTHER, FLATTER FINISH

Forget what you think you know about toner-based printing. Canon's new V Toner is oil-free and utilizes exceptionally small particles (averaging 5.5 microns) containing micro-dispersed wax so the toner fixes evenly and lays flat, resulting in sharp, vivid, dense images and a smooth finish that looks and feels like offset printing. There are no 3-D or raised toner effects, which means you won't be able to tell where the toner begins and ends on the page.

HIGH-RESOLUTION IMAGING

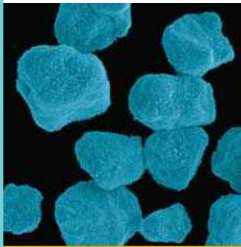
With true 1200 x 1200 dpi resolution, you get finer image quality, higher quality characters, smoother corners, and highly clean gradient transitions. You also get 256 levels of grayscale for unparalleled colour depth, better mid-tones, and detailed images.



IMAGE QUALITY

GLOSS OPTIMIZATION—A REFLECTION OF QUALITY

Canon's unique combination of new toner, imaging process, fusing technologies, and media library work together to ensure that the gloss of the image matches that of the paper and remains consistent across the page. Since there are no tell-tale deviations usually associated with digital printing, the result is undeniably superior.



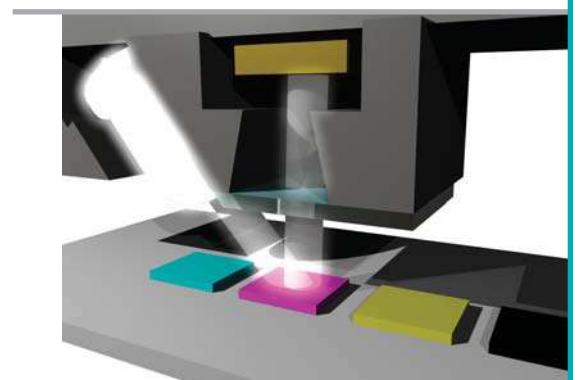
V Toner

ULTRA-HIGH IMAGE QUALITY ON A WIDE RANGE OF PAPER STOCKS

The imagePRESS C7000VP digital press uses an Advanced Image Transfer Belt (AITB). Similar to the blanket on an offset press, the AITB flexible design accepts the image from the drum then transfers all four colours to the page in a single pass. The result? Better solids, not only on plain and coated stocks, but also on specialty papers.

CONSISTENCY YOU CAN COUNT ON—PAGE AFTER PAGE, JOB AFTER JOB, DAY AFTER DAY

Delivering consistent print quality and colour matching throughout a print run, especially on reprint orders, is critically important. But it's sometimes easier said than done, especially when you're working with colour images, a variety of paper types, and varying environmental conditions. Built-in **Automatic Press Calibration** sets the proper colour densities without operator intervention, while Canon's **Advanced Developer technology** maintains a constant supply of fresh developer to ensure colour consistency from side to side, page to page, and job to job. **Real-Time Calibration** measures colour density levels in real-time and automatically makes any necessary adjustments to ensure that the first print matches the last, and every one in-between.



Automatic Press Calibration

PRODUCTIVITY

RELIABILITY AND PRODUCTIVITY: WHAT YOU NEED IN THE PRESSROOM

The imagePRESS C7000VP digital press features advanced productivity and reliability via technologies that keep jobs moving with little or no effort.

MAINTAIN PRINT SPEED, REGARDLESS OF PAPER WEIGHT

While most other digital printing systems are forced to slow down on heavier stocks, the imagePRESS C7000VP digital press maintains print speed, regardless of paper weight, on letter, ledger, 12" x 18", and 13" x 19" sheets. This ability ensures maximum press throughput and simplifies job scheduling, no matter which stock is required.

LET IT RUN UNATTENDED WITHOUT MISSING A BEAT

With enhanced productivity and reliability technologies, the imagePRESS C7000VP digital press can virtually run by itself. In fact, with a few simple steps taken in advance, operators can let the press run any job without intervention. So while the press does its job, operators can prepare for the next one.

DESIGNED TO MINIMIZE DOWNTIME AND MAXIMIZE PRODUCTIVITY

When press time is interrupted, it costs time and money. That's why Canon designed the imagePRESS C7000VP digital press with automated features to minimize downtime.

"On-The-Fly" paper and toner replacements let you maintain productivity without stopping the press. Now you can refill paper trays, replace the toner bottles, and replace the waste toner bottles without stopping or pausing the press.

Multifeed detection is a brilliant way to prevent paper jams and keep the press operating efficiently. If two or more sheets are detected entering the press from the POD deck at the same time, they're diverted to the escape tray on top of the POD deck, without ever stopping the press.



Toner Station

PRODUCTIVITY

PRINTING THAT WATCHES YOUR FRONT AND BACK

The imagePRESS C7000VP digital press maximizes productivity with **automatic duplexing/perfecting on all supported stocks**. With the press's precision front-to-back registration technology, you can be confident that all four sides of an image line up. The highly accurate built-in registration technology helps prevent images from being misaligned, giving you a professional result even on 110 lb. cover (300g/m²) and 13" x 19.2" sheets.

INTELLIGENT REGISTRATION TECHNOLOGIES THAT GIVE IT TO YOU STRAIGHT

If registration is one of your major concerns, the Canon imagePRESS C7000VP digital press will come as a big relief. The digital press has **In-Track Registration** and **Timing Sensors** that address skewing, positioning, and timing issues. This helps ensure that the image is placed in the same location on every sheet of paper and enters the press straight, centered, and on time—every time.



Press Console

ADVANCED FEEDING TECHNOLOGIES THAT SATISFY YOUR APPETITE FOR EFFICIENCY

All trays in the press are equipped with technologies that facilitate accurate and reliable feeding into the press. More like a press than a printer, Canon's **Suction Feeding** technology picks up the top sheet with air, not rollers, for more stability as the sheet is fed into the press. **Enhanced Air Assist** and **Air Separation Technologies** help minimize paper friction and keep sheets separated to prevent double-feeding and the need for operator intervention.

VERSATILITY

MORE INNOVATIVE FEATURES AND PAPER STOCK CHOICES ENHANCE QUALITY, EFFICIENCY, AND PERFORMANCE

The imagePRESS C7000VP digital press's enhanced paper-handling capabilities give operators all the flexibility and versatility they need to meet the challenges of on-demand digital printing.

PRINT ON THE PAPER STOCK YOUR CUSTOMERS WANT

Why limit the paper you offer your customers when you can run the right paper stock for the job with the imagePRESS C7000VP digital press? The press handles a variety of paper weights, types, and sizes and accepts sheets as small as 7.2" x 7.2" to as large as 13" x 19.2" (and even custom sizes) and 17 lb. Bond to 110 lb. Cover in weight. This digital press gives you consistent, high-quality imaging on coated, uncoated, and specialty stocks.

A MEDIA LIBRARY THAT SETS PARAMETERS FOR QUALITY AND EFFICIENCY

Maintaining quality output and operational efficiencies when you're running a variety of stocks can be challenging. But the imagePRESS C7000VP **Media Library** makes it simple. Just enter the properties of each paper you run into the Media Library. This lets you create, edit, manage, and select stocks from one central location. Once the details of the paper are entered, they're stored so you can easily select the appropriate stock for the job and help ensure optimal performance and quality.

TRAYS THAT TAKE A WIDE VARIETY OF STOCKS AND SIZES

In addition to two standard trays, the imagePRESS C7000VP digital press has an optional POD Deck that holds any supported stock in any tray. The POD Deck has three trays—two trays hold 1,000 sheets* each and the third tray holds 2,000 sheets.* Combine two POD Decks with the two standard 1,000-sheet* trays and the capacity increases to 10,000 sheets.* For environments where space is a concern, the 3,500-sheet* Paper Deck is an economical alternative. With greater capacity, versatility to meet your needs, support for more types of stocks, and less time needed for setup, the imagePRESS C7000VP digital press is more than a high-performance machine, it's a productivity tool, too.



POD Deck

*20 lb. Bond (75gsm)

VERSATILITY

FRONT-END PROCESSING POWER TO DRIVE PRODUCTION AND PROFITS!

The imagePRESS C7000VP digital press features

advanced workflow options to keep jobs moving.

Embedded in the imagePRESS system is Canon's proven technology for providing functionality in production printing environments.

CANON CONTROLLER COLOR UFR II/PCL/PS PRINTER KIT

When the imagePRESS C7000VP digital press is configured with this print controller, networked users will be able to access document/image manipulation feature, paper source, and finishing mode directly from their desktop. Ideal for environments requiring basic-level graphic processing, this controller offers a host of capabilities such as Secured Print, Print-to-Mail Box, and Edit & Preview.

ADVANCED OPTIONS

For demanding production environments with complex printing requirements, two advanced controller solutions are available. The imagePRESS Server A2000 and imagePRESS Server A3000 are Fiery-based controllers built on the industry's leading colour server technology to support workflow integration, variable data printing, and Web-to-Print applications.

The **imagePRESS Server A2000** is a high-performance controller for the imagePRESS C7000VP digital press. The Canon imagePRESS Server A2000 is suited for corporate in-plants, PFP, and commercial printers that need more colour control, superior image quality, versatility, and reliability, and operate in both Windows® and Macintosh® environments. It comes loaded with standard features, such as Graphic Arts Package and Impose, and is configurable with optional packages such as Production Printing Package and the Graphic Arts Package, Premium Edition.

The **imagePRESS Server A3000** is the most powerful and highest performing controller for the imagePRESS C7000VP digital press. The imagePRESS Server A3000 is built for maximum colour control, superior image quality, variable data printing, and optimum workflow versatility for professionals using both Windows and Macintosh. Ideal for graphic-intensive environments requiring production and business (Print MIS) workflow integration via JDF, the imagePRESS Server A3000 comes fully loaded with standard features such as Graphic Arts Package, Premium Edition, Impose, and the Production Printing Package.

A PLATFORM FOR CUSTOMIZED WORKFLOW MANAGEMENT

Canon Multifunctional Embedded Application Platform (MEAP®) is an application development platform that Canon and leading software developers can utilize to embed applications, such as cost-recovery solutions, scanning, document distribution, and more. By embedding these technologies in the press, Canon customers can streamline workflows, eliminate excess hardware, and increase productivity. This cutting-edge technology is a built-in component of the imagePRESS C7000VP digital press, allowing these applications to be accessed directly from the Press Console.



imagePRESS Server A2000

TAKE THE imagePRESS C7000VP DIGITAL PRESS TOUR

Canon's investment resulted in better image quality, productivity, and versatility.

The **Document Inserter*** allows users to insert preprinted cover sheets into a saddle-stitched job.

The **Puncher Unit*** provides accurate two- and three-hole punch capabilities, with no set limits.

The **Booklet Trimmer*** attaches to the Saddle Finisher and evenly trims booklets up to 80 pages.** The output tray holds up to 30 saddle-stitched booklets.

The **Saddle Finisher** creates saddle-stitched booklets up to 80 pages (20 sheets) in length. The Saddle Finisher and Plain Finisher provide corner- and double-sided staples up to 100 sheets** and stack on two trays for an output capacity of 5,000 sheets.**

The **High-Capacity Stacker** offset and straight stacks up to 5,000 sheets* on a removable dolly, making transition to off-line finishing easier.

Dual Fusing allows the press to maintain maximum output speed while ensuring that gloss remains consistent across the page.

*Optional accessory for Finisher/Saddle Finisher

**20 lb. Bond (75gsm)





The **Press Console** is designed to improve operability and give you access to new features such as the Media Library.

Advanced Image Transfer Belt (AITB) transfers all four colours to the page in a single pass for a better impression on a wider range of specialty, coated, and uncoated stocks.

Advanced Feeding Technologies are designed to ensure reliable and accurate paper feeding.

The **Escape Tray** is where multifeed sheets from the POD Decks are routed, without stopping the press.

Tray Indicators are illuminated indicators that tell you how much paper is left in a tray.

The **POD Decks** hold any supported stock in any tray, up to 13" x 19.2". Each POD Deck has three trays, with a total capacity of 4,000 sheets;** add a second POD Deck to increase capacity to 10,000 sheets.**

Twin Red Laser Imaging produces precise, clear, higher-resolution images.

The **E Drum** was engineered for optimum image transfer and durability.

Standard Paper Capacity is 2,000 sheets**— 1,000 sheets of paper fit in each of the two standard trays. Both trays hold any supported stock.

SPECIFICATIONS

MAIN UNIT

Technology:	Laser Electrostatic Transfer System
Resolution:	Up to 1200 x 1200 dpi
Halftones:	256-Level Grayscale
Print Speed	
Simplex:	70 ppm (Letter)* 35 ppm (11" x 17")* 31 ppm (13" x 19")*
Duplex/Perfect:	64 ipm (Letter)* 35 ipm (11" x 17")* 31 ipm (13" x 19")*
Maximum Paper Size:	13" x 19.2"
Paper Feeding	
Standard:	2,000 Sheets (20 lb. Bond)
Maximum:	10,000 Sheets (20 lb. Bond) with Optional 2 POD Decks
Acceptable Paper Weight:	17 lb. Bond–110 lb. Cover (64g/m ² –300g/m ²) (All Trays)
Duplexing/Perfecting:	Automatic Duplex/Perfect Any Supported Stock
Power Source:	3-Phase 208V/30A
Dimensions (H x W x D):	Approx. 52.4" x 101.8" x 44.7" (1330mm x 2586mm x 1135mm)
Weight:	Approx. 2,645 lb. (1,200kg)

INPUT ACCESSORIES

POD Deck

Paper Capacity:	4,000 Sheets (1,000 x 2 + 2,000) (20 lb. Bond)
Maximum Paper Size:	13" x 19.2"
Paper Weight:	17 lb. Bond to 110 lb. Cover (64g/m ² to 300g/m ²)
Dimensions (H x W x D):	Approx. 43-1/10" x 38-7/10" x 31-1/5" (1095mm x 982mm x 792mm)
Weight:	Approx. 551 lb. (250kg)
Power Source:	208V/15A

Secondary POD Deck

Paper Capacity:	4,000 Sheets (1,000 x 2 + 2,000) (20 lb. Bond)
Maximum Paper Size:	13" x 19.2"
Paper Weight:	17 lb. Bond to 110 lb. Cover (64g/m ² to 300g/m ²)
Dimensions (H x W x D):	Approx. 40-9/10" x 31-9/10" x 31-1/5" (1040mm x 811mm x 792mm)
Weight:	Approx. 507 lb. (230kg)
Power Source:	From POD Deck-A1

Paper Deck

Paper Capacity:	3,500 Sheets (20 lb. Bond)
Paper Size:	Letter, Letter-R, Legal, 11" x 17", 12" x 18", 13" x 19"
Paper Weight:	17 lb. Bond to 110 lb. Cover (64g/m ² to 300g/m ²)
Dimensions (H x W x D):	Approx. 22-1/2" x 23-5/8" x 24-1/2" (570mm x 601mm x 621mm)
Weight:	Approx. 112.4 lb. (51kg)
Power Source:	From Marking Engine

Color Image Reader

Image Sensor:	CCD
Document Size:	Statement to 11" x 17"
Resolution:	600 x 600 dpi, 256 Gradations
Dimensions (H x W x D):	Approx. 4-1/8" x 28-7/8" x 23-1/2" (105mm x 732mm x 595mm)
Weight:	Approx. 38.5 lb. (17.5kg)
Power Source:	From Marking Engine

DADF (Duplex Automatic Document Feeder)

Tray Capacity:	100 Sheets (20 lb. Bond)
Scanning Speed:	Up to 80 ipm (300 dpi), Up to 50 ipm (600 dpi)
Acceptable Original Size:	Statement to 11" x 17"
Acceptable Paper Weight:	13 lb. Bond to 80 lb. Cover (50gsm to 216gsm)
Dimensions (H x W x D):	Approx. 5-5/8" x 25-1/2" x 22-3/8" (143mm x 646mm x 569.5mm)
Weight:	Approx. 47.3 lb. (21.5kg)
Power Source:	From Marking Engine

FINISHING ACCESSORIES

High-Capacity Stacker

Offset Stack Capacity:	5,000 Sheets (20 lb. Bond)
Top Tray Capacity:	1,000 Sheets (20 lb. Bond)
Maximum Paper Size:	13" x 19.2"
Acceptable Paper Weight:	17 lb. Bond–110 lb. Cover (64g/m ² –300g/m ²)
Number of Units	
Connected at Once:	Up to 2
Dimensions (H x W x D):	Approx. 48-4/5" x 33-9/10" x 31-1/10" (1290mm x 860mm x 765mm)
Weight:	Approx. 440 lb. (200kg)
Power Source:	115V/15A (Second Stacker Receives Power from First Stacker)

Finisher/Saddle Finisher

Number of Trays:	2-3
Tray Capacity	
Top Tray:	3,000 Sheets (20 lb. Bond)
Lower Tray:	2,000 Sheets (20 lb. Bond)
Saddle-Stitch Tray:	30 Booklets or Limitless
Staple Positions:	Corner Stapling, Double Stapling
Acceptable Paper Weight	
Finisher:	17 lb. Bond–110 lb. Cover (64g/m ² –300g/m ²)
Saddle Finisher:	17 lb. Bond–110 lb. Cover (64g/m ² –300g/m ²)
Acceptable Paper Size	
Stapling:	Executive, Statement-R, Letter-R, Letter, Legal, 11" x 17"
Sheet Stacking:	Up to 13" x 19.2"
Max. Stapling Capacity:	Up to 100 Sheets

Max. Booklet Stapling	
Capacity:	Up to 20 Sheets Saddle-Stitched
Dimensions (H x W x D):	Approx. 46-1/2" x 31-1/2" x 31-3/10" (1180mm x 800mm x 792mm)
Weight	
Finisher:	Approx. 278 lb. (126kg)
Saddle Finisher:	Approx. 392 lb. (178kg)
Power Source:	208V/15A

Booklet Trimmer

Margin Trimming:	Open-End Only
Trim Amount:	0.08" to 0.78" (2mm to 20mm)
Trim Thickness:	40 Sheets
Waste Tray Capacity:	1,500 Sheets of Trimmed Strip
Acceptable Paper Weight:	17 lb. Bond–110 lb. Cover (64g/m ² –300g/m ²)
Output Tray Capacity:	30 Booklets
Dimensions (H x W x D):	Approx. 41" x 62-1/10" x 30-2/5" (1040mm x 1575mm x 770mm)
Weight:	Approx. 335 lb. (152kg)
Power Source:	From Finisher

Puncher Unit (Option for Finisher/Saddle Finisher)

Punch Method:	Press Punch System
Max. Paper Weight:	17 lb. Bond to 110 lb. Index (64g/m ² to 200g/m ²)
Paper Sizes	
2-Hole:	Legal, Letter-R
3-Hole:	11" x 17", Letter
Punch Speed:	Up to 70 ppm (Depends on Speed of Marking Engine)
Power Source:	From Finisher

Document Insertion Unit (Option for Finisher/Saddle Finisher)

Number of Trays:	2
Capacity	
Upper Tray:	200 Sheets
Lower Tray:	200 Sheets
Acceptable Paper Weight:	17 lb. Bond to 110 lb. Cover
Acceptable Paper Size	
Upper Tray:	Letter, Letter-R, Executive
Lower Tray:	11" x 17", Legal, Letter, Letter-R, Executive, 12" x 18", 13" x 19", 13" x 19.2"
Dimensions (H x W x D):	Approx. 8-2/5" x 24-3/5" x 26-3/10" (213mm x 625mm x 667mm)
Weight:	Approx. 37.5 lb. (17kg)
Power Source:	From Finisher

*Regardless of paper weight

Windows is a registered trademark of Microsoft Corporation in the United States and/or other countries. Macintosh is a trademark of Apple Computer, Inc. CANON and MEAP are registered trademarks, and IMAGEPRESS is a trademark of Canon Inc. in Canada and may also be registered trademarks or trademarks in other countries. IMAGEANYWARE is a trademark of Canon. All referenced product names and other marks are trademarks of their respective owners.

Specifications and availability are subject to change without notice. Some products/configurations shown with optional accessories. ©2007 Canon Canada Inc. All rights reserved.

Federal Law prohibits copying of certain documents. Violators may be subject to penalties. We suggest that you check with your own legal counsel. Canon U.S.A., Inc. and Canon Canada Inc. intend to cooperate with Law Enforcement Agencies in connection with claims of unauthorized copying.



0072W920

Canon
image*ANYWARE*

1-800-OK CANON
www.canon.ca