

Canon

imageRUNNER®
6570 / 5570 / 5070



CORPORATE
SYSTEMS



meap
POWERED BY

imageRUNNER®
6570 / 5570 / 5070

CORPORATE SYSTEMS

NOW YOU CAN CAPTURE,
CREATE, AND COMMUNICATE
AT NETWORK SPEED

The Canon imageRUNNER® 6570,
imageRUNNER 5570, and
imageRUNNER 5070 devices...
the ideal blend of high-
volume productivity and
document workflow efficiency
for every communication need.



In today's networked world, corporate departments need the right tools to keep pace with the speed of business on a global scale. These tools must go beyond traditional, paper-based document production to encompass the expanding need for managing and protecting electronic information.

With the imageRUNNER 6570, imageRUNNER 5570, and imageRUNNER 5070 devices, Canon offers multifunction solutions that achieve a new level of performance and empower every user with the ability to capture, create, and communicate critical information at network speed.

From high-speed scanning and local document storage to advanced finishing, electronic distribution, and Internet-ready capabilities, these imageRUNNER systems deliver unmatched performance, durability, and innovation. Plus, you can take advantage of Canon's MEAP® (Multifunctional Embedded Application Platform) technology to customize system operability around unique company workflows—all while providing peace of mind for corporate decision-makers everywhere.



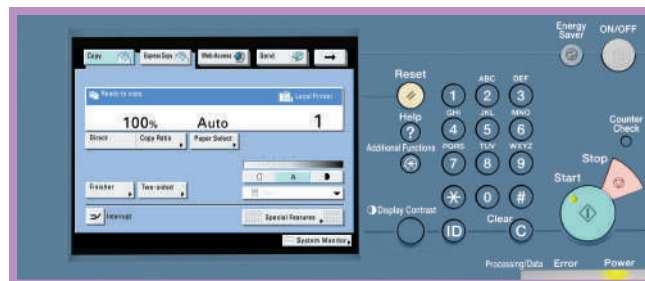
POWERFUL PRODUCTIVITY STRAIGHT TO THE FINISH

The Canon imageRUNNER 6570/5570/5070 devices offer more document production flexibility than ever before.

Featuring Canon's imagePlatform architecture, the imageRUNNER 6570/5570/5070 devices are designed to drive exceptional performance, with full concurrency across all system functions, including copying, printing, scanning, sending, and faxing.

Canon's custom processor technology is tied to a standard complement of 512MB RAM and a 20GB hard disk drive. Together, these elements deliver the processing power to support constant use in multiuser environments. Leveraging Canon's expertise in digital laser printer engine design, the imageRUNNER 6570/5570/5070 models ensure that every print/copy job is completed quickly, with output speeds of up to 65/55/50 pages per minute (letter), respectively. True 600 x 600 dpi scanning and Canon's innovative image enhancement technology deliver every page with superb image quality at resolutions of up to 2400 x 600 equivalent dpi.

With Canon's IH (Induction Heating) technology, warm-up times are measured in seconds, not minutes, and energy savings are counted in dollars, not pennies. Standard Stackless Duplexing helps reduce paper costs while high-yield, easy-to-replace supplies maximize uptime and keep running costs to a minimum. Canon's proprietary Amorphous Silicon Drum (A-Si) technology offers greater resilience to wear and tear than conventional drums, ensuring consistent high-definition output. Plus, a number of versatile system accessories provide configuration flexibility to suit every need and application.



User-friendly Control Panel

Duplexing Automatic Document Feeder



Reliably feed up to 100 one- or two-sided originals.

Versatile Paper Supply



Get uninterrupted productivity with a 4,150-sheet standard paper supply, expandable to 7,650 with optional accessory.

Finisher-T1



Multiposition stapling, optional hole-punching, and a 4,000-sheet capacity for long-run job output.

Saddle Finisher-T2



Add professional saddle-stitched finishing for in-house booklet creation. Optional hole-punching also available.

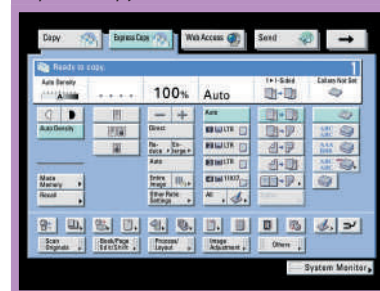
CORPORATE RESOLUTION SOLUTION

Productive hard-copy and electronic file storage features for document reproduction now—or later.

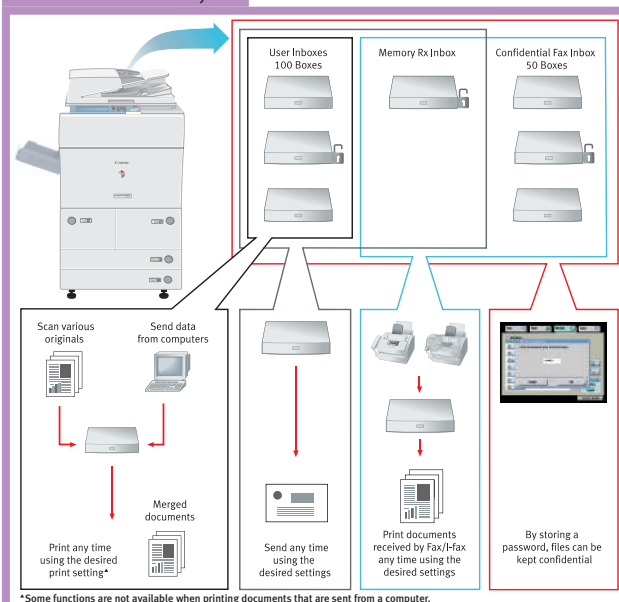
When short deadlines need to be met, the Canon imageRUNNER 6570/5570/5070 devices are ready to go to work. With support for a number of advanced image and document manipulation capabilities, nothing is impossible. Add covers, chapters, and inserts. Process multipage, disparate originals with the Job Build feature. Customize the user interface for quick job programming. Even add digital data, such as page numbers and watermarks, to copies. Each page is reproduced with enhanced 1200 x 600 dpi image quality through digital smoothing technology.

When the job calls for future print-on-demand and storage applications, the imageRUNNER 6570/5570/5070 devices' vast memory supports Canon's unique Mail Box technology as a standard function. Scan and store documents with your desired settings. Then move, edit, merge, forward, print, or delete as necessary with complete control.

Express Copy



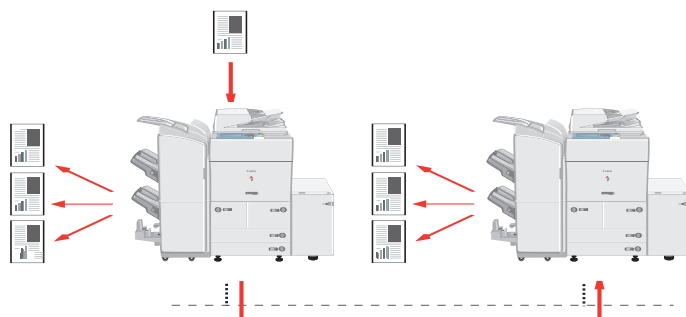
Mail Box Functionality



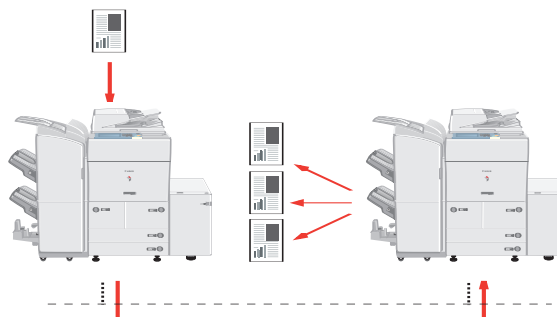
The imageRUNNER 6570/5570/5070 models support value-added Mail Box functions that may serve as your centralized system for information sharing, on-site document storage, and print-on-demand applications.

Cascade and Remote Copy

Cascade Copy



Remote Copy



Double system productivity and enable printing directly to the point of need by leveraging the power of other imageRUNNER 6570/5570/5070 devices installed on the network.

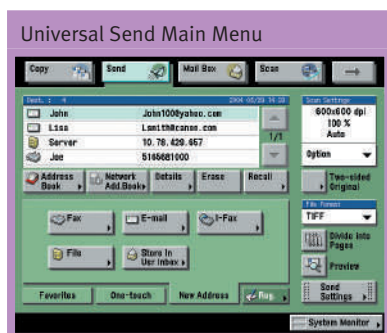
INFORMATION SHARING WITH JUST THE TOUCH OF A BUTTON

Leverage the power of your existing network infrastructure to communicate across the room or around the globe.



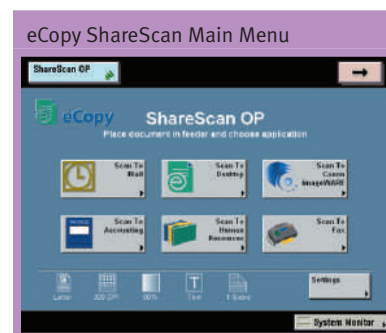
Start with basic document distribution by adding Super G3 Fax capabilities to the imageRUNNER 6570/5570/5070 devices and send documents as fast as three seconds per page.* With the fax option, every connected user has access to paperless faxing right from the desktop through a user-friendly fax driver. The imageRUNNER 6570/5570/5070 devices also support standard TWAIN-compliant scanning for image capture and editing needs at connected workstations through Canon's Network ScanGear utility.

For more advanced document distribution needs, add the optional Universal Send™ kit so you can push digital documents to any destination—individual or group e-mail addresses or Internet faxes, local Mail Boxes, network folders, and document management systems. Destinations can be entered and stored in the imageRUNNER 6570/5570/5070 Address Book, or searched on corporate networked servers using the system's LDAP support for accurate and authorized recipient selection.



Canon's URL Send feature enables scanned documents to be stored on the device while sending the URL of the document to a recipient for retrieval when they need it—reducing electronic jams and clogged e-mail inboxes. With Encrypted PDF Mode,** users can minimize the risk of unauthorized access to scanned and sent files by encrypting the contents and assigning a password for opening, printing, and editing. With Searchable PDF Mode,** users can scan and create searchable files to locate information quickly.

For enterprise-wide document distribution needs and high-volume recipient populations, the optional eCopy ShareScan™ OP software can be embedded in the imageRUNNER 6570/5570/5070 models for linkage with corporate e-mail and networked enterprise applications. This ensures secure, paperless distribution and management of corporate data.



* Approximate 3-second-per-page fax transmission time based on ITU-T No. 1 Chart (JBIG, Standard Mode) at 33.6 Kbps modem speed when transmitting to another V.34 machine. The Public Switched Telephone Network (PSTN) currently supports 28.8 Kbps modem speeds or lower, depending on telephone line conditions.

** Requires Universal Send PDF Enhancement Kit-B1.

PROCESSING POWER TO SPARE

Exceptional printing performance across multiple users and environments.

The imageRUNNER 6570/5570/5070 devices have been designed to integrate seamlessly into existing network infrastructures. The systems' standard 10/100Base-TX Ethernet interface supports the fastest possible data transfer speeds in shared environments or, for expanded versatility, use the USB 2.0 High-Speed interface for direct connection to a host PC. The imageRUNNER 6570/5570/5070 devices can support wireless connectivity through a third-party bridge* to bring the freedom of cable-free printing to your office.

The optional embedded Multi-PDL Printer Kit-G5 supports PCL 5e, PCL 6, PostScript® 3™ emulation, plus Canon's proprietary UFR II (Ultra Fast Rendering) technology for exceptional printing performance in both Windows® and Macintosh® environments. The optional external imagePASS-M3▲ delivers genuine Adobe® PostScript 3 along with PCL 5e/6 support to meet the demands of higher-bandwidth printing needs.

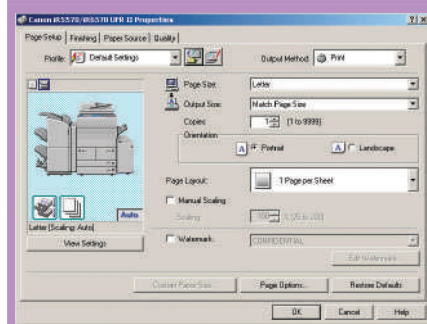
The Canon imagePASS-M3▲ controller features its own hardware, which is dedicated for printing as well as several optional advanced printing capabilities, including page imposition through Impose and Hot Folders for automated job queuing.

The imageRUNNER 6570/5570/5070 devices go even further to support several additional value-added printing functions. There's a Secured Print function for document confidentiality, support for integration with imageWARE™ Publishing Manager (optional) for drag-and-drop document building, and optional bar-code printing† for quick and accurate production of bar codes. The system also offers the industry's first-ever Web Access function. This option allows users to call up Internet or intranet data on the full-size user interface panel for information retrieval and printing of forms and documents†—without the use of a PC.

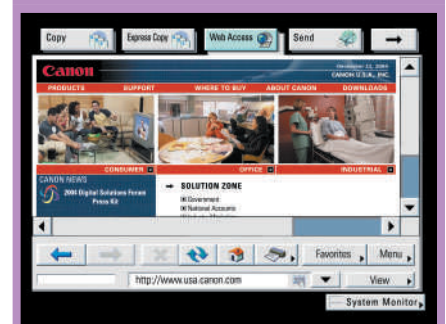
imagePASS-M3 Controller▲



UFR-II Print Driver



Web Access



* Please check with your local Authorized Canon Dealer for details.

▲ The imageRUNNER 5070 does not support the imagePASS-M3 print controller.

† Requires Multi-PDL Printer Kit-G5 (optional).

TO PRESERVE AND PROTECT

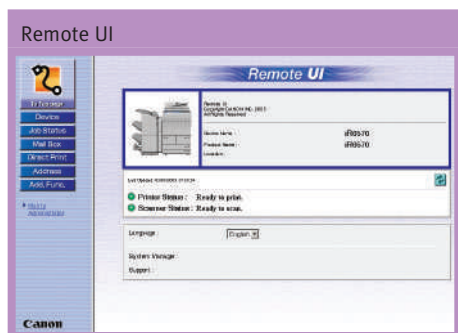
Modify imageRUNNER 6570/5570/5070 device functionality to meet specific system access requirements and unique applications.

Achieve Complete Control

Take control of departmental workflows. Canon provides a complete suite of tools and utilities to help simplify imageRUNNER 6570/5570/5070 device configuration, administration, access, and system customization. Canon's device management utilities ease administrator burdens of installing, monitoring, and managing networked devices, while the Device Information Delivery setting feature broadcasts desired settings of a target machine to other networked imageRUNNER systems throughout the department for identical operability.

The embedded Department ID Mode tracks and limits system access to those users assigned valid IDs and passwords. Network-enabled user authentication tools, such as Simple Device Login (SDL) and Single Sign-on (SSO), permit existing network IDs and passwords to be used so employees can maintain a single identity for all network security functions.

Once device access is granted, a number of advanced security and encryption features go to work to help prevent data from being compromised or intercepted by outsiders. For even greater protection, the optional imageRUNNER Security Kit initiates the overwriting of hard disks to completely erase stored data.



Modify System Operability to Meet Unique Workflows

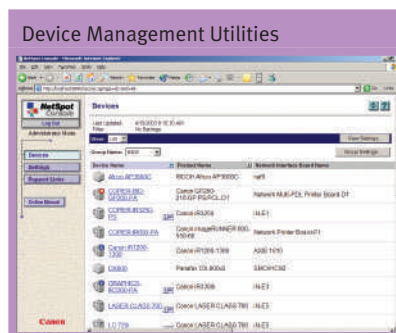
Based on Java technology, Canon's MEAP (Multifunctional Embedded Application Platform) architecture allows the system to incorporate unique applications that run embedded within the device. The result is total integration into your company's infrastructure by presenting customized applications to walk-up users directly from the device's full-color LCD panel.

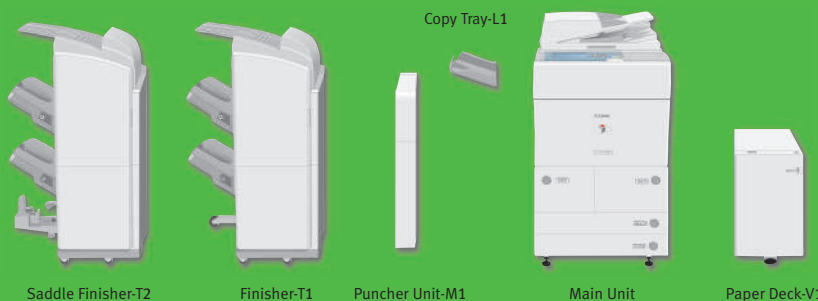
Accessibility for All

The imageRUNNER 6570/5570/5070 systems go even further to provide easy device access to every authorized user. Disabled users can operate system functions from a laptop or desktop PC using the optional Remote Operator's Software Kit, which emulates the control panel. Visually impaired users can receive audible job confirmation through the optional Voice Guidance Kit.

Image of a Leader

As a leading producer of network-connected multifunction devices, Canon continues to set new standards for quality, performance, and reliability. That's why businesses of every size and scope trust Canon to provide office solutions that enhance productivity and make every business more competitive.





imageRUNNER®
6570/5570/5070

imageRUNNER 6570/5570/5070 Specifications

Type:	Digital, Multifunction Imaging System
Imaging System:	Laser Dry Electrostatic Transfer
Developing System:	Dry Mono Component Developing System
Fixing System:	Induction Heating Fusing System
Image Server Memory:	Standard 512MB RAM/20GB HDD
First-Copy Time:	Approx. 3.3 Seconds or Less From Platen Glass
Warm-Up Time:	Approx. 30 Seconds or Less
Copy/Print Speed:	65/55/50 cpm/ppm (Letter)
Acceptable Originals:	Sheets, Books, 3-dimensional Items (Up to 4.4 lb.)
Max. Original Size:	11" x 17"
Max. Copy Size:	11" x 17"
Min. Copy Size:	3-7/8" x 5-7/8"
Max. Mail Boxes Supported:	100
Max. Copy Reservation:	5 Jobs
Actual Resolution:	600 x 600 dpi
Interpolated Resolution:	1200 x 600 dpi (Copy) 2400 x 600 dpi (Print)
Halftones:	256 Gradations
Duplexing:	Standard Automatic Trayless Duplexing
Magnification:	25% to 400% (Platen) 25% to 200% (Feeder) (in 1% Increments)
Exposure Control:	Automatic or Manual (9 Levels)
Paper Sources	
Standard:	Dual Front-loading Trays (1,500 Sheets Each) Dual Front-loading Cassettes (550 Sheets Each) 50-sheet Stack Bypass 3,500-sheet Paper Deck (Total: 7,650 Sheets)
Optional:	
Multiple Copies:	1 to 999
Paper Weights (From All Sources):	17 lb. Bond to 110 lb. Index
Dimensions (H x W x D):	47" x 25-3/8" x 29-1/4" (1192mm x 643mm x 743mm)
Weight:	Approx. 474 lb. (215kg)
Power Requirements:	120VAC, 60Hz, 16A
Power Consumption:	1.85kW (Max.)
Plug:	NEMA 5-20R
Toner Yield:	45,000 Images (at 6% Coverage)

Accessories

Universal Send™ Kit-D1 (Optional)

Sending Methods:	E-mail, I-fax, Super G3 Fax (Optional), File Server (IPX, FTP, SMB), User Inbox
Address Book Capacity:	Max. 1,800 Destinations
File Format	
Standard:	TIFF, PDF
Optional:	PDF (OCR)
Sending Sizes:	Statement to 11" x 17"

Duplexing Automatic Document Feeder (Standard)

Acceptable Originals:	Statement to 11" x 17"
Capacity:	100 Sheets (20 lb. Bond)
Original Paper Weight:	13 lb. to 32 lb. Bond

Finisher-T1 and Saddle Finisher-T2 (Optional)

Number of Trays:	3 Trays
Tray Capacity	
No-collate Mode	
Tray A:	250 Sheets (Letter, Statement-R, Executive) 125 Sheets (Legal, Letter-R, 11" x 17")
Tray B:	1,300 Sheets (Letter, Statement-R, Executive) 650 Sheets (Legal, Letter-R, 11" x 17")
Tray C:	2,450 Sheets (Letter, Executive) 1,700 Sheets (Statement-R) 650 Sheets (Legal, Letter-R, 11" x 17")
Collate and Group Mode	
Tray B:	1,300 Sheets (Letter, Executive) 650 Sheets (Legal, Letter-R, 11" x 17")
Tray C:	1,700 Sheets (Letter, Executive) 650 Sheets (Legal, Letter-R, 11" x 17")
Staple Mode Tray B/C:	1,300 Sheets/100 Sets (Letter, Executive) 650 Sheets/50 Sets (Legal, Letter-R, 11" x 17")
Max. Stapling Capacity	
Corner/Double:	50 Sheets (Letter, Executive) 30 Sheets (Letter-R, Legal, 11" x 17")
Saddle-stitching (Saddle Finisher-T2 Only)	
Acceptable Paper Sizes:	Letter-R, Legal, 11" x 17"
Capacity/Tray:	1 to 5 Sheets/25 Sets 6 to 10 Sheets/15 Sets 11 to 15 Sheets/10 Sets
Max. Stapling Capacity/Set:	15 Sheets
Folding:	V-fold
Attachable Accessories:	Puncher Unit-M1

Paper Deck-V1 (Optional)

Number of Drawers:	1
Paper Capacity:	3,500 Sheets (20 lb. Bond)
Paper Size:	Letter
Paper Weight:	17 lb. Bond to 110 lb. Index

Super G3 Fax Board-R1 (Optional)

Applicable Line:	Public Switched Telephone Network (PSTN)
Connection Lines:	1
Sending/Original Size:	Statement to 11" x 17"
Recording/Printing Size:	Statement to 11" x 17"

Canon Multi-PDL Printer Kit-G5 (Optional)

Processor:	Canon Custom Processor—Shared
Memory:	512MB—Shared
Storage:	20GB—Shared
PDL Support:	PCL 5e/6, PostScript® 3™ Emulation, UFR II

Interface Connections	
Standard:	10/100Base-T (RJ-45), USB 2.0 High Speed
Network OS:	Windows® 98/Me/2000/XP Windows NT® 4.0/Server 2003 Solaris™ 1.1x, 2.5x or later Macintosh® OS 8.0 or later (PPD) Novell® NetWare® v.3.2, 4.1, 4.11, 4.2, 5, 5.1, 6, 6.5 (IPX/SPX™)

imagePASS-M3 (v1.1) (Optional)*

Type: External Stand-alone Controller	
Processor:	Intel® Celeron® 2.5GHz
Memory:	256MB
Storage:	40GB HDD
PDL Support:	Adobe® PostScript 3, PCL 5e, PCL 6
Interface Connections	
Standard:	10/100/1000Base-TX (RJ-45)
Optional:	Parallel Interface Adapter
Network OS:	Novell NetWare v.3.2, 4.1, 4.11, 4.2, 5, 5.1, 6.0, 6.5 (IPX/SPX) Windows 98/Me/2000/XP Windows NT 4.0 Solaris 2.5.1 or later Apple® Macintosh OS 9.0 or later

Other Optional Accessories and Utilities

• Accessibility Handle-A1	• imageRUNNER Security Kit-A2/B3
• Barcode Printing Kit-A1	• imageWARE Suite
• Braille Label Kit-A1	• NetSpot Suite
• Card Reader-C1	• Puncher Unit-M1 (Option for Finishers)
• Card Reader Attachment-C2	• Remote Operator's Software Kit-A1
• Card Sets	• Tab Feeding Attachment-A1
• Cassette-AB1	• USB Application Interface Board-D1
• Copy Tray-L1	• Universal Send PDF Enhancement Kit-B1
• Document Tray-K1*	• Voice Guidance Kit-A2
• eCopy Suite	• Web Access Software-A1
• Expansion Bus Board-C1	

* The imageRUNNER 5070 does not support the imagePASS-M3 print controller.

^ Optional accessory for the imageRUNNER 5070. Standard on the imageRUNNER 6570/5570.

Canon
image*ANYWARE*

1-800-OK-CANON
www.usa.canon.com

Canon U.S.A., Inc.
One Canon Plaza
Lake Success, NY 11042

As an ENERGY STAR® Partner, Canon U.S.A., Inc. has determined that these products meet the ENERGY STAR® guidelines for energy efficiency. ENERGY STAR and the ENERGY STAR mark are registered U.S. marks. Windows and Windows NT are registered trademarks of Microsoft Corporation in the United States and/or other countries. Adobe and PostScript are registered trademarks of Adobe Systems Incorporated in the United States and/or other countries. Apple and Macintosh are registered trademarks of Apple Computer, Inc. Intel and Celeron are registered trademarks of Intel Corporation. eCopy ShareScan is a trademark of eCopy, Inc. Novell and NetWare are registered trademarks of Novell, Inc. in the United States and other countries. Solaris is a trademark of Sun Microsystems, Inc. in the United States and other countries. IPX/SPX is a trademark of Novell, Inc. CANON, IMAGERUNNER, IMAGEPASS, and MEAP are registered trademarks, and UNIVERSAL SEND and the GENUINE logo are trademarks of Canon Inc. in the United States and may also be registered trademarks or trademarks in other countries. IMAGEWARE is a registered trademark of Canon U.S.A., Inc. in the United States and is a trademark of Canon Inc. in certain other countries. REMOTE UI is a trademark of Canon U.S.A., Inc. IMAGEANYWARE is a trademark of Canon. All referenced product names and other marks are trademarks of their respective owners.

Specifications subject to change without notice.

Products shown with optional accessories and equipment.

©2006 Canon U.S.A., Inc. All rights reserved.

0059W471
0206-6570/5570/5070-120M-DCR



PRINTED ON RECYCLED
PAPER IN THE U.S.A.

