

# Canon

 **imageRUNNER**  
ADVANCE

**C5255 / C5250**  
**C5240 / C5235**

**Office  
Solutions**

multifunction printer

compact design

color/black and white



Simply advanced.



**C5255 / C5250**  
**C5240 / C5235**

Designed for

**Busy workgroups  
that demand  
outstanding efficiency**

#### Standard Features

Copy/Print/Send/Store

Color/Black and White

Print up to 55 ppm (BW), 51 ppm (Color); Letter

Up to 12" x 18"

5,000-sheet maximum capacity

Scan up to 120/120 ipm single-pass duplex\*

Flexible in-line finishing options

Scan directly to Microsoft® Word, PowerPoint®,  
and searchable PDF formats

Hard Disk Drive Lock and Erase, IPsec

\*Single-pass duplex available only  
on the imageRUNNER ADVANCE  
C5255/C5250 models.



# Simply advanced.

The imageRUNNER ADVANCE C5200 Series transforms workflow from a series of individual processes to an integrated flow of shared information. A beautifully compact communications hub, this Series can drive your organization to new levels of performance and productivity. From every point of view, these models are simply advanced.



## People-Centric

An exceptionally intuitive, simple-to-use interface puts access to all functions right at your fingertips, whether at the device or at your desktop.



## Brilliant

Get noticed with high-impact color or crisp black-and-white output, all delivered with amazing speed.



## Mobile

Even on the go, you're in control. Print from a laptop, tablet, or smartphone to an imageRUNNER ADVANCE system.



## Connected

Advanced technology and expansive enterprise applications work seamlessly with your device to deliver exceptional results.



## Cloud-Enabled

A simple touch of a button on the user interface lets you access, scan to, or print directly from, the cloud.



## Security

Multilayered solutions safeguard confidential information and support security compliance.



# Simple to use. Very people-centric.

The imageRUNNER ADVANCE C5200 Series helps each user accomplish every task with outstanding ease. A center of extraordinary productivity, these models are simple to personalize, creating a truly customized way to work.

## A smart, intuitive interface

The imageRUNNER ADVANCE C5200 Series is designed with you in mind. With an impressive range of customizable, simple-to-use, streamlined features, these models let everyone work smarter and faster. Starting with the large, full-color, high-resolution 8.4" TFT screen, users can easily view all information.



### Two menus

Just a stroke of the main menu key gives you instant access to business-ready functions. Combine and access routine tasks and job flows using the Quick Menu.



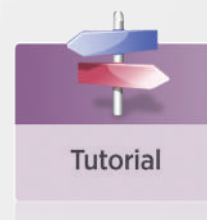
### Custom options

Organize the on-screen buttons to fit the way you work by determining their number, size, and layout. Even display your own graphics as a screen background.



### Web-ready

View Web pages directly from the device control panel. Just enter a URL to browse pages. Easily output Web pages and online PDFs.



### Handy tutorials

Quickly access simple step-by-step instructions right on the user interface.





ADF Light



USB Keyboard



Easy Toner Access



One-button Paper Access

## Designed for ease

Thoughtful details such as a light under the automatic document feeder\* and an optional USB keyboard allow you to work more comfortably. Toner bottles can be replaced with minimal effort, and paper drawers spring open at the touch of a button.



## Engineered for adaptability

These intelligent systems help you achieve your goals now and in the future. With the ability to smoothly integrate hardware and software solutions, the imageRUNNER ADVANCE C5200 Series lets you personalize applications to meet your organization's changing needs. And it's highly flexible, so you can easily add to, or update, your system with the quick deployment of settings and applications across your enterprise.



## Walk-up convenience

Easily scan to, or print from, a USB thumb drive. Expand connectivity options to include memory media, such as an SD card or CompactFlash card. Even browse folders and rename files.



## A consistent experience

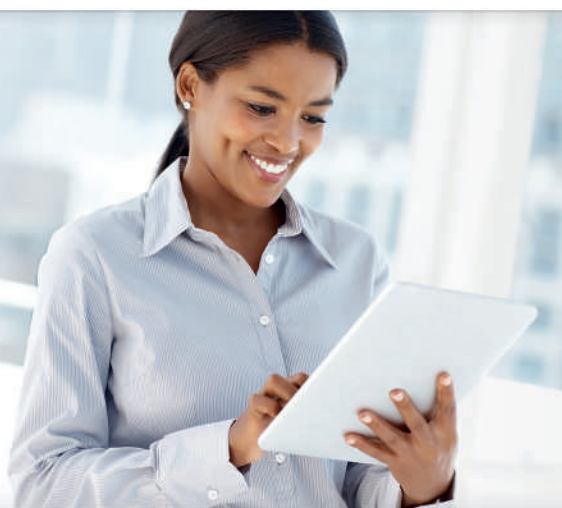
No matter which imageRUNNER ADVANCE device you use, you'll enjoy a consistent, simple-to-use experience, as all models in the Series use the same interface and print driver.

\*Available only on the imageRUNNER ADVANCE C5255/C5250 models.



# Powerful connections. Seamless integration.

A powerful digital communications center, the imageRUNNER ADVANCE C5200 Series integrates enterprise applications, connects to the cloud, and gives you the freedom to work from wherever you are, efficiently and easily.



## On the go

In an increasingly mobile world, people need the ability to work remotely while maintaining their productivity. Now Canon delivers advanced solutions that keep work flowing effortlessly from wherever you are.



### Mobile devices

Keep work flowing even when you're on the move. Print and scan from your laptop, iPad® tablet, and iPhone® or BlackBerry® smartphone. Just log-in at an imageRUNNER ADVANCE device to retrieve your job.



### Cloud portal

Gain quick access to cloud services from your imageRUNNER ADVANCE device. Simply log-in to access or send documents directly from the cloud.



### Advanced Anywhere Print

This serverless solution lets you conveniently and securely print to any connected imageRUNNER ADVANCE system on your network. When ready, simply log-in at any device to view and retrieve your print job.

## Extensive Print Solutions

### Print Options

Canon's proprietary UFR II print technology is standard with these models. Options including Adobe® PostScript® 3™ and PCL 5c/6 are also supported.

### Job and Color Management Tools

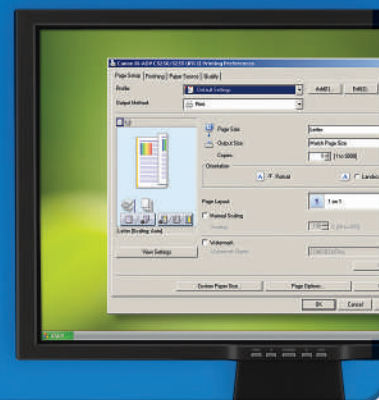
Enhance print productivity for multiuser, color-intensive environments with Canon's imagePASS and ColorPASS\* print controllers.

### Control

Canon's Driver Configuration Tool allows you to set specific defaults and custom profiles.

You can control costs and enhance security by implementing features such as allowing only black-and-white and/or secured printing.

\* Available only on the imageRUNNER ADVANCE C5255.



## Easy collaboration



### Scan and store documents

Designed to streamline workflow, these models let you easily save, store, and access scanned documents from multiple locations. Save to built-in spaces such as Mail Box and Advanced Box, or external spaces such as memory media or another networked location.



### Distribute documents

Distribute scanned documents to multiple destinations, such as e-mail and fax addresses and network folders all in a single step. Now you can scan and convert documents directly into Microsoft® Word, Microsoft PowerPoint®, or a searchable PDF format. Universal Send supports an expanded range of file formats, including High Compression PDF/XPS, Adobe PDF Reader Extensions, PDF/a, and Encrypted PDF.



### Fax documents

These models support up to four fax lines and the ability to share the fax function of another networked imageRUNNER ADVANCE model on the same network. The Job Forwarding feature routes incoming faxes to other systems, users, or destinations, including the Advanced Box file-sharing space.



## Single-step operation

Transform time-consuming, multistep tasks into a simple, single-step operation. Use Workflow Composer to create all-in-one buttons that can be registered in the Quick Menu. Easily distribute documents to multiple destinations with the touch of one button.

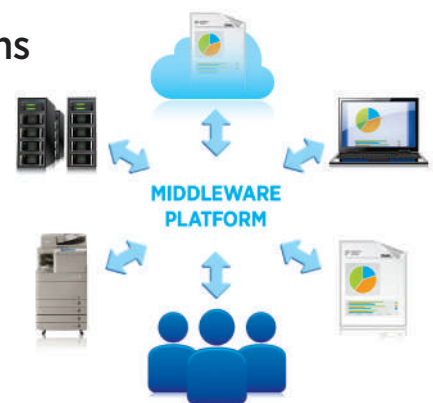


## Right from your PC

Enjoy even greater control and convenience right from your PC. Use the new imageRUNNER ADVANCE Quick Printing Tool to print, fax, preview, and convert files to PDFs, as well as monitor the status of your system—all without even opening an application. imageRUNNER ADVANCE Desktop lets you manage and prepare documents, combine multiple formats, preview files, and select the finishing functions.

## Integrate your imaging with enterprise applications

A new middleware technology, based on Service Oriented Architecture (SOA), effortlessly links enterprise applications, such as Oracle® and SAP®, with Customer Relationship Management (CRM) systems like Salesforce.com®, ECM system, and many others. You can also connect your document-intensive processes with these applications. The streamlined workflow automates complex business processes and offers easy access to information, saving both time and money.





# Robust security. Centralized management.

In today's networked world, you need greater control over your resources and data.

The imageRUNNER ADVANCE C5200 Series delivers just that with the ability to configure a system, safeguard information, and track resources, all right at your fingertips.



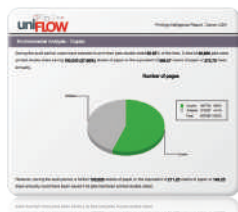
## Powerful command

Canon's device management tools keep you in charge at every step, right from your desktop or through the cloud. Easily install and replace devices, migrate settings and data to new ones, and distribute applications and settings across your network. The intuitive Remote User Interface lets you monitor a single device, while imageWARE Enterprise Management Console lets you track the activity of an entire fleet. Even receive automated notifications when supplies are low or service is needed.



## Safeguard data

From installation to retirement, this Series offers multilayered solutions to help safeguard information and support security compliance. HDD Erase, a standard feature, removes latent images after each task. A security chip with tamper-resistant hardware protects passwords and encryption keys. IPsec secures data as it traverses the network. Options such as HDD Data Encryption help protect information even after hard drive removal.



## Maximize resources

These systems offer advanced tools to help you track, manage, and influence user behavior. Solutions, such as uniFLOW, analyze color output, encourage double-sided printing, and allocate costs by department, project, or client. Route jobs to the most cost-effective device, and get alerts when supplies are low.



## Secure authentication

With the need to keep data secure, busy workgroups will appreciate the Canon imageRUNNER ADVANCE Series' serverless print environment. Users can print from anywhere within the network to any connected device via log-in authentication.

## Security Features

### Document Security

- Document Scan Lock and Tracking
- Adobe® LiveCycle® Rights Management ES2.5 Integration
- Encrypted Secured Print
- Watermark/Secure Watermark
- Copy Set Numbering
- Encrypted PDF
- Digital Signature PDF
- Fax Forwarding
- Fax Destination Confirmation

### Mail Server Security

- POP Authentication before SMTP
- SMTP Authentication

### Network Security

- IP/MAC Address Filtering
  - Port Filtering
- SSL Encryption
- Network Application On/Off
- USB Port On/Off
- Destination Restriction
- IPsec
- IEEE802.1X (Wire/Wireless)

### Device Security

- IEEE2600.1 Certification\*

### Data Security

- HDD Lock
- Trusted Platform Module
- HDD Data Erase and Initialize
- HDD Encryption
- Advanced Box Security
- Mail Box Password Protection
- Job Log Conceal
- Removable Hard Disk Drive

### Logging/Auditing Security

- imageWARE Secure Audit Manager

### Authentication

- Department ID/Control Card Systems
- Device Level Log-in (SSO-H)
- Access Management System (AMS)
- Function Level Log-in via AMS
- Authorized Send
- Smart Card Authentication

\* Not available at time of launch.





# Standout quality. Outstanding reliability.

Accomplish multiple tasks with impressive speed, produce professional-quality documents, and seamlessly link to business applications—all with performance you can count on.



## Make a great impression

Produce professional-quality presentations, reports, and newsletters in-house. Canon's state-of-the-art imaging technology and toner ensure that image quality is stunning. You can easily generate accurate, high-impact color or crisp black-and-white results on demand. Canon's proprietary ZIMA chip technology offers superb, high-quality copies. And with flexible finishing capabilities, you'll be ready for every opportunity.



## Lots of uptime

Canon incorporates its signature reliability into every imageRUNNER ADVANCE Series model. Status notifications keep you ahead of the game, and toner can even be replaced on the fly. If the correct paper for a job is unavailable, the system begins the next job without delay. And with access to the latest technology and simple, clear upgrades, you can power through your tasks, giving you more time to devote to other business areas.



## Powerful operation

Accomplish multiple tasks concurrently with the speed your work demands. These models have two dedicated processors that work together to accomplish multiple tasks simultaneously. And Quick Startup mode minimizes start-up time, so devices start up promptly to keep you working with outstanding efficiency.

## Targeted, integrated solutions

With its brilliant architecture, the imageRUNNER ADVANCE C5200 Series offers true personalization, allowing you to gather, organize, and disseminate information to meet your unique challenges. Canon's innovative MEAP® platform lets you develop custom solutions to meet specific workflow needs. And new levels of connector and link support enhance communication with existing systems as well as those you may acquire in the future.





# Strong commitment. Eco-conscious solutions.

It's all about a brighter, greener future. The imageRUNNER ADVANCE C5200 Series incorporates innovative, eco-conscious solutions that propel your business while reducing your environmental footprint.



## A greener way to work

Canon knows that the world and the workplace need a greener workflow. The imageRUNNER ADVANCE C5200 Series delivers just that. Now organizations can seamlessly share and distribute digital documents and preview files to make changes prior to printing, reducing the use of paper and toner. Print drivers are automatically set for duplex, encouraging two-sided printing to reduce waste. And with secure printing, documents are sent to a device but aren't printed until a password is entered, further reducing paper waste.



## Eco-conscious design

Canon is making a difference through creative ecological thinking. These models employ certain components fabricated with 100% recycled plastic from retired products. Canon's innovative green technologies also include bio-based plastic, a plant-derived compound that replaces certain petroleum-based plastic parts.

## A clear strategy

### Greater energy efficiency

From the inside out, the imageRUNNER ADVANCE C5200 Series is designed for high-energy efficiency and stellar performance. The combination of our fusing technologies and pQ toner helps lower overall energy consumption by minimizing power requirements and reducing energy use during warm-up and standby. With advanced technologies present in each model, the Series meets ENERGY STAR® standards.



### Reducing pollution

All suppliers are required to meet Canon's stringent Green Procurement policy and environmental terms. This helps Canon exceed the toughest global standards set by the EU RoHS Directive, which restrict the use of certain hazardous substances.



### Reduction of CO<sub>2</sub> emissions

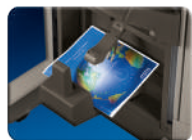
Through its Life Cycle Assessment (LCA) System, Canon has lowered CO<sub>2</sub> emissions by focusing on each stage of the product life cycle, including manufacturing, energy use, and logistics.

These products are designed to be the smallest and lightest in their class, with less packaging, to make transportation more efficient.



# Customized for your work environment

## Finishing Options



### A Booklet Finisher-J1

- 2-tray, 3,000-sheet capacity
- Corner and double stapling up to 50 sheets
- Booklet-making up to 16 sheets



### Inner Finisher-E1

- 500-sheet capacity\*
- Corner and double stapling up to 50 sheets



### Staple Finisher-J1

- 2-tray, 3,000-sheet capacity
- Corner and double stapling up to 50 sheets

### Other Finishing Options

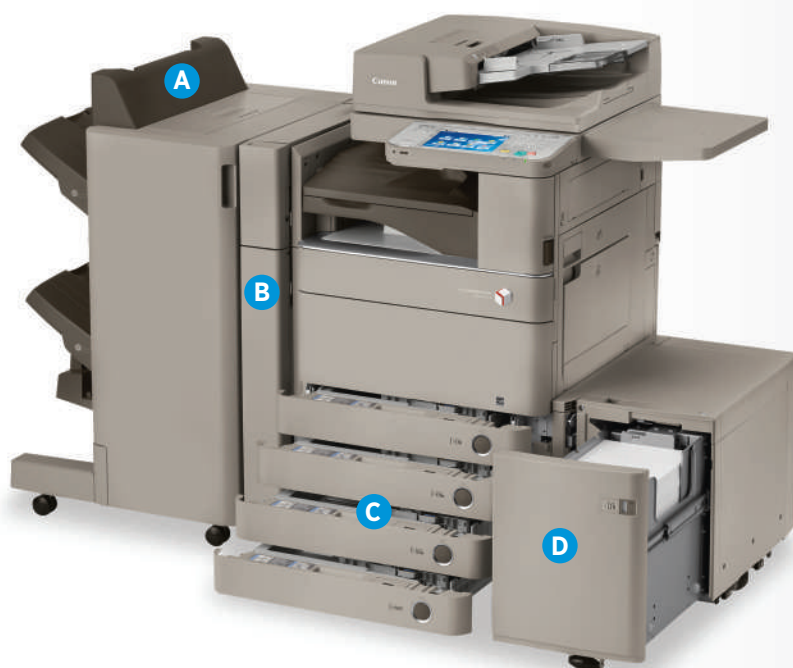
#### Inner 2-way Tray-F1

#### Copy Tray-J1

#### Inner Finisher Additional Tray-A1

### B External 2/3-Hole Puncher-B2\*\*

- 2- and 3-hole punching



## Paper Feeding Options

### C Cassette Feeding Unit-AD2

- 550-sheet x 2-cassette capacity
- 14 lb. Bond to 80 lb. Cover
- Supports up to 12" x 18"

### D Paper Deck Unit-B2

- 2,700-sheet capacity
- 14 lb. Bond to 28 lb. Bond
- Supports letter-sized paper



### Envelope Feeder Attachment-D1

- 50-sheet capacity
- Supports COM10 No.10, Monarch, DL, ISO-B5, ISO-C5

### Other Paper Feeding Options

#### Tab Feeding Attachment Kit-B1

#### Cabinet Type-B1

## Printer Options\*\*\*

### PCL Printer Kit-AR1

### PS Printer Kit-AR1

### Direct Print Kit (for PDF/XPS)-H1

### imagePASS-B2

- Intel® Pentium Dual Core™ E5300 2.6GHz Processor
- 2GB RAM standard
- 160GB Hard Disk
- Adobe PS 3/PCL 5c/ PCL 6

### ColorPASS-GX400†



- Intel® Core™ i5 660 3.33GHz Processor
- 2GB RAM standard
- 500GB Hard Disk
- Adobe PS 3/PCL 5c/PCL 6

## Security Options

### Universal Send Security Feature Set-D1

### Universal Send Digital User Signature Kit-C1

### Encrypted Secure Print-D1

### Secure Watermark-B1

### Document Scan Lock Kit-B1

### HDD Data Encryption and Mirroring Kit-C1

### Removable HDD Kit-AC1

## Accessibility Options

### Remote Operators' Software Kit-B1

### Voice Operation Kit-C2

### Voice Guidance Kit-F2

### Braille Label Kit

### ADF Access Handle-A1

\* 300-sheet capacity when Additional Tray-A1 is attached.

\*\* External 2/3-Hole Puncher-B2 can only be installed with either the Staple Finisher-J1 or Booklet Finisher-J1.

\*\*\* UFR II standard.

† Available on imageRUNNER ADVANCE C5255 only. Not available at time of launch.

**Note: For additional options and specifications, please refer to the back page.**

## Main Unit

**Operation Panel:** 8.4" SVGA Full-Color TFT Screen

### Memory

Standard: 2GB RAM  
Maximum: 2.5GB RAM

### Hard Disk Drive

Standard: 160GB  
Maximum: 1TB

### Network Interface Connection

Standard: 1000Base-T/100Base-TX/10Base-T  
Optional: Wireless LAN (IEEE 802.1x via third-party adapter)

### Other Interface

Standard: USB 2.0 (Host) x 2, USB 2.0 (Device)  
Optional: Device Port [USB 2.0 (Host) x 2], Serial Interface Copy Control Interface

### Copy/Print Speed (BW/Color, Letter)

**C5255:** Up to 55/51 ppm  
**C5250:** Up to 50/45 ppm  
**C5240:** Up to 40/35 ppm  
**C5235:** Up to 35/30 ppm

### First-Copy-Out Time (Letter)

**C5255/C5250:** BW: 3.9 Seconds, Color: 6.0 Seconds  
**C5240/C5235:** BW: 5.4 Seconds, Color: 8.1 Seconds

### Paper Sources (20 lb. Bond)

Standard: Dual 550-sheet Paper Cassettes, 100-sheet Stack Bypass  
Maximum: 5,000 Sheets

### Output Paper Capacity (20 lb. Bond)

Standard: 250 Sheets (Inner Tray)  
Maximum: 3,250 Sheets (w/Staple Finisher or Booklet Finisher)

### Output Paper Sizes

Cassettes: 12" x 18",\* 11" x 17",\* Legal, Letter, Letter-R, Statement-R, Executive, Custom Size (5-1/2" x 7-1/8" to 12" x 18")  
Bypass: 12" x 18", 11" x 17", Legal, Letter, Letter-R, Statement, Statement-R, Executive, Custom Size (3-7/8" x 5-1/2" to 12-5/8" x 18")  
Paper Deck: Letter  
Other: Envelope Feeder Attachment (COM10 No.10, Options: Monarch, DL, ISO-C5),\*\* Tab Feeding Attachment Kit\*\*

### Acceptable Paper Weights

Cassettes: 14 lb. Bond to 80 lb. Cover (52 to 220 g/m<sup>2</sup>)  
Bypass: 14 lb. Bond to 140 lb. Index (52 to 256 g/m<sup>2</sup>)

### Warm-up Time

**C5255/C5250:** From Power On: 31 Seconds, From Sleep: 18 Seconds Quick Startup Mode: 7 Seconds\*\*\*  
**C5240/C5235:** From Power On: 31 Seconds, From Sleep: 15 Seconds Quick Startup Mode: 7 Seconds\*\*\*

### Power Requirements/Plug

**C5255/C5250:** 120V AC, 60Hz, 20A/NEMA 5-20P  
**C5240/C5235:** 120V AC, 60Hz, 15A/NEMA 5-15P

### Dimensions (H x W x D)

**C5255/C5250:** 37-3/8" x 24-3/8" x 28-1/8" (950mm x 620mm x 715mm)  
**C5240/C5235:** 36-5/8" x 24-3/8" x 28" (931mm x 620mm x 712mm)

### Installation Space (W x D)

**C5255/C5250:** 33-1/2" x 28-1/8" (850mm x 715mm)  
**C5240/C5235:** 33-1/2" x 28" (850mm x 712mm)

### Weight

**C5255/C5250:** Approx. 346 lb. (157kg)<sup>†</sup>  
**C5240/C5235:** Approx. 333 lb. (151kg)<sup>†</sup>

### Toner (Estimated Yield @ 5% Coverage)

**C5255/C5250:** Black: 44,000 Images, Color (C,M,Y): 38,000 Images  
**C5240/C5235:** Black: 36,000 Images, Color (C,M,Y): 27,000 Images

## Document Feeder

### Scan Method

**C5255/C5250:** Single-Pass Duplexing, Automatic Document Feeder  
**C5240/C5235:** Duplex Automatic Document Feeder

### Acceptable Originals

Paper Size: 11" x 17", Legal, Letter, Letter-R, Statement, or Statement-R

### Scan Speed (BW/Color; Letter)

**C5255/C5250:** Simplex: Up to 75/75 ipm (300 dpi)/Up to 75/51 ipm (600 dpi)  
Duplex: Up to 120/120 ipm (300 dpi)/Up to 75/51 ipm (600 dpi)  
**C5240/C5235:** Simplex: Up to 51/51 ipm (300 dpi)/Up to 46/46 ipm (600 dpi)  
Duplex: Up to 19.6/19.6 ipm (300 dpi)/Up to 17.5/17.5 ipm (600 dpi)

### Paper Capacity (20 lb. Bond)

**C5255/C5250:** 150 Sheets  
**C5240/C5235:** 100 Sheets

## Print Specifications

**Engine Resolution:** 1200 x 1200 dpi

### PDL Support

Standard: UFR II  
Optional: PCL 5c, PCL 6, Adobe PS 3

### Print Driver Supported OS

UFR II, PCL 5c/6, Adobe PS 3:  
Windows\* (XP/Windows Vista\*/7), Windows Server (2003/2008/2008 R2/SBS 2011/2012), Windows Terminal Servers, Microsoft\* Clustering Server, Citrix, Macintosh\* (OS X 10.5.8 or later, UFR II and PS 3 only), VMware, SAP (PS and PCL Only)

### Direct Print Support

Standard: TIFF, JPEG  
Optional: PDF, XPS<sup>††</sup>, EPS<sup>†††</sup>

## Universal Send Specifications

### Sending Method

E-Mail, I-Fax, File Server (FTP, SMB, WebDAV), Mail Box, Super G3 Fax (Opt.)

### Communication Protocol

File: FTP (TCP/IP), SMB (TCP/IP), WebDAV  
E-mail/I-Fax: SMTP, POP3, I-FAX (Simple, Full)

### File Format

Standard: TIFF, JPEG, PDF, PDF (Compact), PDF (Apply Policy), PDF (Optimize for Web), PDF/XPS (OCR), PDF/A-1b, XPS, XPS (Compact), OOXML (OCR) (.pptx and .docx)  
Optional: PDF (Trace & Smooth), PDF (Encrypted), PDF/XPS (Digital Signature), PDF (Reader Extensions)

## Fax Specifications

**Maximum Number of Connection Lines:** 4

### Modem Speed

Super G3: 33.6 Kbps  
G3: 14.4 Kbps

**Compression Method:** MH, MR, MMR, JBIG

**Sending/Recording Size:** Statement to 11" x 17"

## Store Specifications

### Mail Box (Number supported)

100 User Inboxes, 1 Memory RX Inbox, 50 Confidential Fax Inboxes

### Advanced Box

Available: Approx. 15GB (Standard HDD), Disk Space: Approx. 629GB (1TB HDD)  
Communication Protocol: SMB or WebDAV  
Supported Client PC: Windows\* (Windows 2000/XP/Windows Vista\*/7)

### Memory Media

Standard: USB Memory  
Optional: SD, SDHC, CompactFlash, Memory Stick, Microdrive

## Security Specifications

### Standard

Department ID Management, Single Sign On-H, Access Management System (Device and Function Level Log-in), Secured Print, Trusted Platform Module, User Access Control of Advanced Box, Mail Box Password Protection, IPV6, Restricting Features (Restricting the Send Function, Restricting New Addresses on Address Book), SSL Encrypted Communication, SNMPv1/v3, MAC/IP Address Port Filtering, SMTP Authentication, POP Authentication before SMTP, HDD Initialize (Up to 9x), HDD Erase (Up to 3x), HDD Lock, IPsec, Adobe LiveCycle® Rights Management ES2.5 Integration

\* Not available on top cassette.

\*\* Can be set to Cassette 2 only. Can not install Envelope Feeder Attachment and Tab Feeding Attachment at same time.

\*\*\* If "Quick Startup Settings for Main Power" is set to ON, it takes seven seconds until the key operation on the touch-panel display is available after turning on the main power.

† Includes consumables.

†† XPS cannot be printed directly from Web Access Software.

††† EPS can be printed directly only from Remote User Interface.


NOTE: Some accessories require additional equipment or may be prerequisites for other options. Some accessories cannot be installed simultaneously. Check with your Canon Authorized Dealer for details.

As an ENERGY STAR® Partner, Canon U.S.A., Inc. has determined that these products meet the ENERGY STAR guidelines for energy efficiency. ENERGY STAR and the ENERGY STAR mark are registered U.S. marks. CANON, IMAGERUNNER, MEAP, and the GENUINE logo are registered trademarks of Canon Inc. in the United States and may also be registered trademarks or trademarks in other countries. IMAGEWARE is a registered trademark of Canon U.S.A., Inc. in the United States and is a trademark of Canon Inc. in certain other countries. IMAGEANYWARE is a trademark of Canon. All other referenced product names and marks are trademarks of their respective owners and hereby acknowledged. Specifications and availability subject to change without notice. Products are not manufactured for outdoor use; depiction of such is for artistic purposes only. Products shown with optional accessories. Some items may not be available at this time; please check for availability. All printer output images are simulated. Canon U.S.A. does not provide legal counsel or regulatory compliance consultancy, including without limitations, Sarbanes-Oxley, HIPAA, GLBA, Check 21 or the USA Patriot Act. Each customer must have its own qualified counsel determine the advisability of a particular solution as it relates to regulatory and statutory compliance.

©2012 Canon U.S.A., Inc. All rights reserved.

Federal Law prohibits copying of certain documents. Violators may be subject to penalties. We suggest that you check with your own legal counsel. Canon U.S.A., Inc. and Canon Canada, Inc. intend to cooperate with Law Enforcement Agencies in connection with claims of unauthorized copying.

0169W980  
0912-C5200SRS-55M-DMC

 PRINTED ON 10% RECYCLED FIBER IN THE U.S.A.



**Canon**  
*image*ANYWARE

1-800-OK-CANON  
www.usa.canon.com

Canon U.S.A., Inc.  
One Canon Plaza  
Lake Success, NY 11042

