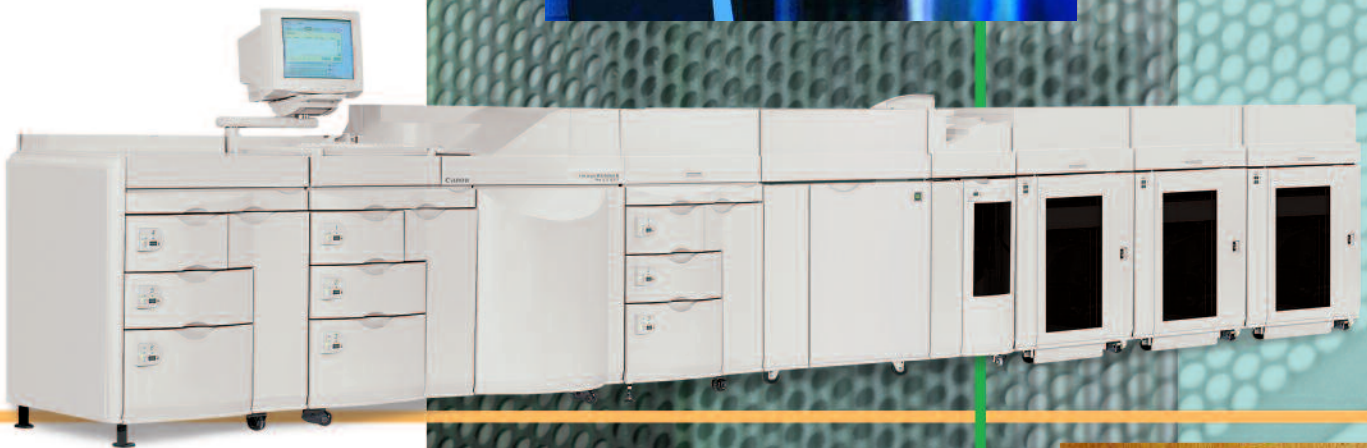


Canon

imageRUNNER®
Pro 150VP



PRODUCTION
SYSTEMS



imageRUNNER® Pro 150VP PRODUCTION SYSTEMS

CANON'S imageRUNNER® Pro 150VP DEVICE – A HIGH-SPEED, HIGH-VOLUME NETWORKED PRODUCTION ENGINE OFFERING UNPARALLELED FLEXIBILITY IN CONFIGURATION AND DESIGN.

The imageRUNNER Pro 150VP device is a **Very Powerful** black-and-white production printer that combines outstanding performance with **Variable Paper** and **Variable Pitch** capabilities.



Robust enough to support up to five million prints per month, the 150-page-per-minute imageRUNNER Pro 150VP device is designed to handle the demanding needs of your production business. The device comes with an impressive array of standard features, including an 8,000-sheet paper supply with variable paper size capabilities up to 14.33" x 18.5"* and variable pitch printing support that allows you to print odd paper sizes without a significant drop in machine-rated speed. Other best-in-class features include outstanding 600 x 600 dpi print quality and an easy-to-use operator control interface. A wide range of in-line finishing options—puncher, saddle-stitched booklet-maker, perfect binder, and more—are also available to customize the engine to meet your specific application needs.

For transactional print environments, the versatile design of the imageRUNNER Pro 150VP device also allows you to upgrade the engine to support secure Magnetic Ink Character Recognition (MICR)* printing applications. Interchangeable toning stations can be easily swapped out between print runs so that both MICR and other high-quality printing can be accomplished on the same system. The integrity of MICR jobs is constantly maintained through security features built into the design of the print production software.

What's more, the imageRUNNER Pro 150VP printer's open design allows you to integrate the system easily into your existing workflow, whether that includes other Canon products or your own third-party value-added solutions. The imageRUNNER Pro 150VP device is not only the best total solution for your production-intensive environment today, but it's a safe investment choice for businesses that expect to grow and change in the future. With the Canon imageRUNNER Pro 150VP system, you're never locked into a proprietary workflow; you can add paper supplies, finishing capabilities, and other options at any time over the life of the product.

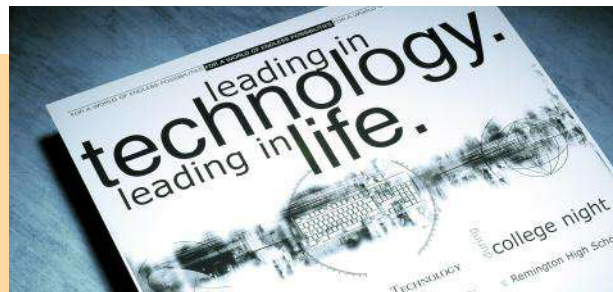
*Optional license upgrade is required.

STURDY DESIGN, POWERFUL CONTROLLER

Rated for 3 to 5 million impressions per month, the imageRUNNER Pro 150VP printer can support the heavy workloads typical of production environments. It performs best when put to the test, so load up your jobs, stand back, and watch it run.

Powered by a SUNSM controller, the imageRUNNER Pro 150VP device can handle Adobe[®] PostScript[®] 3,TM PCL 6*, PDF, and TIFF output requirements. High-conversion speeds in the raster image processor (RIP) and electronic job spooling in the memory allow busy production environments to print the first complete set of a job in record time. Unlike many competitive systems, which must spool and process an entire job before printing begins, the imageRUNNER Pro 150VP device prints in page order so that printing can begin almost immediately. A first-set proof can be obtained quickly and reviewed for approval before committing to a long print run.

The imageRUNNER Pro 150VP device comes with robust print production software that drives all machine operations. The software ships preloaded on the system controller, reducing installation time so that the machine can be up and running at your site quickly. Within the system software are several licensing options that enable additional engine functionality to support specific applications in commercial print and transactional print environments. These options include MICR* printing, Enhanced Feed Mode* for handling of heavy and coated stocks, and Digital Print Quality Adjustments*



A LASTING IMPRESSION

Just one glance at a finished document printed on the imageRUNNER Pro 150VP device is all it takes to see the superior image quality that this device produces. Rich blacks, crisp, clean lines, and outstanding halftones are evident in page after page of output.

The secret behind the imageRUNNER Pro 150VP printer's impressive image quality lies in advanced imaging technologies that help make critical documents look their best. Advanced Light Emitting Diodes (LED) provide enhanced dot definition, uniformity, and reliability; Gray Resolution Enhancement Technology (GRET) helps to produce text and lines with excellent edge definition and smoothness; and, Small Particle Developer (SPD) ensures smooth solids, sharp text, and low levels of background. Active registration—both in-track and cross-track—further contributes to the imageRUNNER Pro 150VP printer's ability to produce documents that deliver maximum visual impact.

Exceptional Productivity for a Wide Range of Paper Sizes:

- 150 ppm for paper width 7" - 9"
- 125 ppm for paper width >9" - 10.9"
- 100 ppm for paper width >10.9" - 13.8"
- 75 ppm for paper width >13.8" - 18.5"

DESIGNED WITH THE END-USER IN MIND

In its most basic configuration, the imageRUNNER Pro 150VP printer comes with the marking engine, print controller, two three-drawer paper supplies, and a finisher. But that's just the beginning of what this engine can do. You can select from a broad range of additional options to customize the device to meet your specific business requirements. In-line finishing options can reduce the amount of manual collation that's currently done—or eliminate it completely. Whether you purchase the standard configuration, or opt to add some additional capabilities, the imageRUNNER Pro 150VP printer is a great choice for your business.

Optional Inserter - Add the Inserter to your system to easily incorporate preprinted materials into finished documents. Three convenient drawers (two 1,000-sheet, one 2,000-sheet) feed your inserts at machine-rated speed—eliminating the need for costly outsourcing or time-consuming manual collation.



Sun Controller - Running on a UNIX® operating system, the Canon imageRUNNER Pro 150VP device provides robust system performance across a wide variety of job streams.

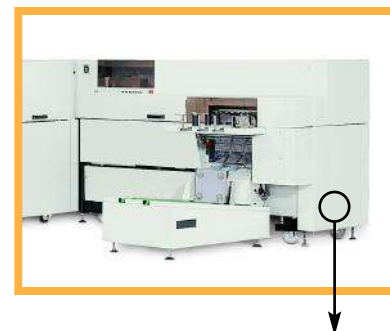
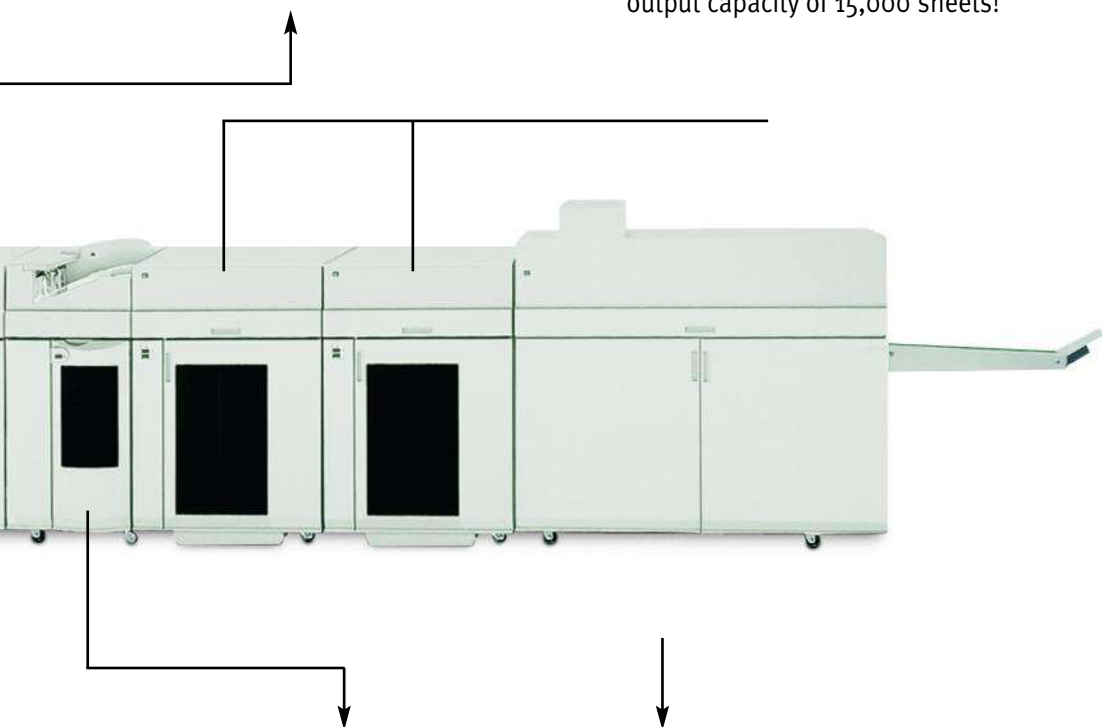
Paper Supply Modules - Two 4,000-sheet Paper Supply Modules come standard with the device, with an option to add one more. Maximum online capacity is 12,000 sheets from nine different sources, allowing you to create documents containing multiple paper types, colors, and exceptions. Paper drawers are adjustable, and most can support paper sizes from 7" x 8.27" to 14.33" x 18.5" and in weights from 16 lb. Bond to 150 lb. Index.

Marking Engine - With powerful print production software, the imageRUNNER Pro 150VP device is available in several different unique configurations that will help you drive the productivity of your business to new levels.

Optional Puncher - Produce hole-punched, ready-to-bind documents with the in-line Puncher option. A variety of optional punch tools are available, all of which are interchangeable by the key operator.

Optional Stacker(s) - Up to 5,000 sheets can be output to the optional Stacker and transported to off-line finishing devices with the handy, rolling removable dolly. Or chain up to three stackers together for an output capacity of 15,000 sheets!

Optional Bourg Perforating Rotating Folding Unit (BPRF) - Increase the productivity of the Perfect Binder with the BPRF. This accessory sends two-up images to the Perfect Binder so that more books can be produced in less time and with reduced paper waste.



Finisher - A standard feature of the imageRUNNER Pro 150VP device, the Finisher can accommodate up to 3,000 sheets and perform measured stitching of up to 100 sheets at a time.

Optional Booklet-maker - If booklet-making is a requirement, you can produce saddle-stitched booklets of up to 88 pages (22 sheets) in 5.5" x 8.5" or 8.5" x 11" sizes. The optional Booklet-maker also includes a trimmer and an output tray that can hold up to 42 finished booklets. The Booklet-maker requires the Stacker for operation.

Optional Perfect Binder - Perfectly bound books, from 15 sheets up to 1.5" thick (approximately 350 sheets), are produced on the Perfect Binder on-demand, automatically. Utilizing a hot bind glue technology, the Perfect Binder also provides milling and scoring capabilities as well as paper waste collection. An automatic cover feeder and output stacking module enable ready-to-pack stacking. The Perfect Binder requires the Stacker for operation.



THE PRODUCTIVITY YOU EXPECT, REGARDLESS OF JOB COMPLEXITY.

The paper requirements of a print job often have a negative impact on the time it takes to produce output. Odd paper sizes, loading and unloading of special paper stocks, and manual collation of preprinted and heavier materials can add minutes or hours to overall job time. The imageRUNNER Pro 150VP device, however, handles the advanced paper requirements typical of production workflows with ease. In fact, there is usually little or no loss in machine-rated speed.

Flexible Paper Supply

The imageRUNNER Pro 150VP device offers flexible paper-handling to manage the diverse applications that are common to production environments. A six-way, 8,000-sheet paper supply comes with the device as standard. The optional third Paper Supply Module can be added, boosting total online capacity to an astounding 12,000 sheets. All three paper supplies offer variable paper size capabilities and can handle paper weights from 16 lb. Bond to 150 lb. Index (60 - 266gsm). The top drawer of each paper supply can support in-track paper sizes from 7" to 9" and cross-track sizes from 8.27" to 14.33". The middle and bottom drawers can support an even broader range of custom paper sizes, with in-track parameters of 7" to 18.5" and cross-track parameters of 8.27" to 14.33". All drawers are fully adjust-able within the minimum and maximum dimensions they support.

While some slowdown in machine speed is common when printing to odd-size paper, the variable pitch feature of the imageRUNNER Pro 150VP device decreases this loss in productivity. Variable frames on the image loop minimize delays in paper movement, so your job gets done faster.

The generous paper supply of the imageRUNNER Pro 150VP device and the large number of throughput choices it offers allow you to create documents containing multiple paper types, colors, and exceptions. You can create finished documents with custom covers, inserts, tabs, and more, without the frustrating limitations that are common to many other printers. With so many drawers to choose from, you can leave special papers in the device to use when needed, instead of constantly having to switch out papers. The wide range of paper sizes supported also reduces the need for off-line trimming.

If preprinted stocks need to be incorporated into your finished documents, an optional three-drawer, 4,000-sheet Inserter is also available to handle the collation of preprinted materials on a variety of substrates. Color photos, illustrations, transparencies, charts, graphs, and other media are added to the job stream post-process, protecting sensitive pages from exposure to potentially damaging fuser heat.

If glossy and coated papers are common to your printing operations, the imageRUNNER Pro 150VP device can handle those too. Optional Enhanced Feed Mode boosts paper-feeding by allowing an external compressed air source to flow through the paper drawers. You can print to heavy, coated, and off-set printed materials without worry or concern.

For extremely paper-intensive operations, the Canon imageRUNNER Pro 150VP printer is also compatible with third-party roll feed devices. You can leverage all the unique advantages of this imageRUNNER model with the convenience and cost-savings of feeding paper from a roll. Enjoy hours of reliable, non-stop printing at 150 pages per minute.

The imageRUNNER Pro 150VP printer supports a wide range of paper sizes, finishes, and weights:

- True 6"x9" book production
- Preprinted 18.5" check stock (12-up)
- Large-format output of over 18"
- Heavier stocks for postcard mailings
- Enhanced Feed Mode for heavy and glossy media

MAGNETIC INK CHARACTER RECOGNITION (MICR)

Expand the possibilities of your production printer even more with added support for MICR. In addition to all the advanced capabilities of the imageRUNNER Pro 150VP printer's standard configuration, you have the option to add secure MICR printing technology. The result is a flexible printing solution that can be used for both commercial and transactional print applications.

Versatile Printing Solution

Due to the unique design of the imageRUNNER Pro 150VP printer, both MICR printing and other high-quality printing can be accomplished on the same system. Users can switch between standard and MICR toner, depending on the type of job being run. Interchangeable toning stations can be easily swapped out between print runs. The toning stations are stored on separate toning carts that can be exchanged whenever needed. In addition, the carts provide a safe place to store the toner when not in use.

Enhanced Security

The imageRUNNER Pro 150VP printer employs special security features to ensure that MICR jobs are only run by authorized personnel. Only a logged-in user, identified as a "Security Operator," will have permission and privileges to enable and disable MICR fonts, and release jobs from the Secured State when Restricted, Secure Mode is active. Operators without the MICR-secure designation will not be able to activate MICR fonts or release secured jobs.

To activate MICR fonts, MICR toner must be detected by the system. Once the MICR toner is removed, the MICR fonts are automatically disabled. In addition, prints generated with MICR and non-MICR toner are tracked by separate meters to simplify billing and provide a greater level of control and accountability.

Total Application Solution

The precise paper-handling, superior image quality, and best-in-class registration of the imageRUNNER Pro 150VP device make it an ideal MICR printer. With minimal jamming, excellent font readability, and consistent print performance, MICR applications such as checks, coupons, rebates, and financial documents can be printed with confidence using the imageRUNNER Pro 150VP system.



WORKFLOW THAT WORKS

The imageRUNNER Pro 150VP printer offers several optional tools to help you build a system customized for your specific application needs.

Document Scanning and Make-ready

Alone, the imageRUNNER Pro 150VP device is a productive, high-speed printer. But combine it with SmartBoard™ Suite software or the EFI MicroPress® and an optional Canon scanner, and you have a powerful solution from pre-flight to production.

SmartBoard Suite, a PDF-based workflow tool for the Canon imageRUNNER Pro 150VP printer, takes document assembly, editing, and proofing capabilities to the next level. With SmartBoard, you can easily combine documents from various applications and input sources, and create brand-new output. Operations such as reordering pages, rotating pages, imposition, annotation, tab creation, and black-and-white and color image editing are done quickly and easily.

The EFI MicroPress® for Canon combines powerful document “make-ready” capabilities with advanced job management and workflow tools through a single, front-end solution. The MicroPress delivers powerful digital prepress and workflow management utilities to mission-critical print environments, with productivity features that optimize throughput and minimize downtime to ensure on-time job completion.

Key productivity features include:

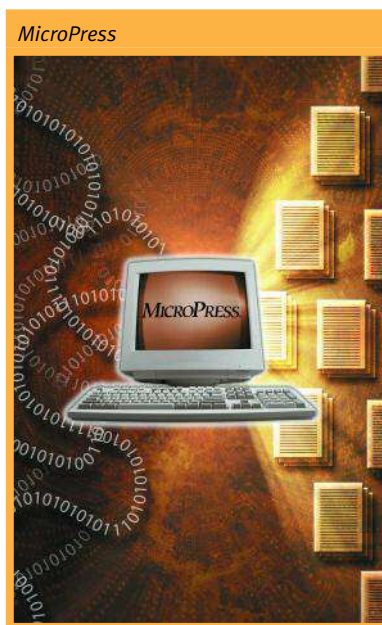
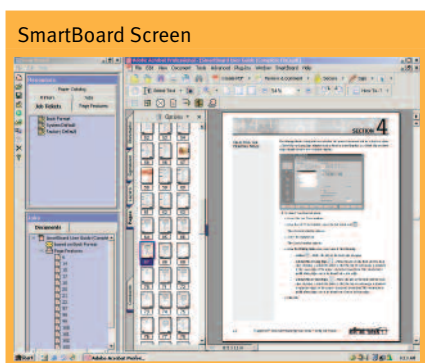
TrueCluster – Manage jobs across several devices for printing multiple jobs simultaneously or large jobs quickly, while accommodating variations in job size and workflow.

TrueRecover – Automatic Page and job-level error detection and recovery across one or multiple devices.

PowerRIP – Up to four *MicroPress* RIPs can be added to a single server for simultaneous processing of multiple files, increasing throughput and productivity, and eliminating potential bottlenecks.

TrueEdit – A suite of make-ready tools for preparing post-RIP documents for printing. Allows users to make job- and page-level changes without having to re-RIP the entire job, dramatically reducing the processing time. Automates manual processes such as hand-collating, tab inserting, document renumbering, and booklet creating.

In addition, users have access to the Digital StoreFront™ (DSF) software solution that simplifies the process of job submission, proofing, ticketing, and more.



Still have a significant amount of hard copy that needs to be converted into electronic form? Canon offers two high-performance network scanners to accomplish this task.

The **DR-7080C** is a mid-production scanner that can scan black-and-white and color documents. This versatile scanner operates at a maximum speed of 70 pages per minute and offers a host of advanced features such as one-pass scanning and reliable feeding of mixed-batch documents. Built-in MultiStream™ technology allows users to generate a variety of different images, simultaneously, from a single scan—color, black and white, grayscale, binary, or R/G/B color dropout.

Configure your imageRUNNER Pro 150VP printer with a Canon scanner and one of the Canon document mastering tools to simplify your most complex, scan-store-reassemble production jobs.

DR-7080C



Software Integration

Current Xerox® DigiPath users can integrate the Canon imageRUNNER Pro 150VP printer with their existing solution using **CoXist** software. CoXist runs on the controller of the imageRUNNER Pro 150VP system, so there is no need to interrupt your existing DigiPath setup. With CoXist, you can send jobs from DigiPath directly to the imageRUNNER Pro 150VP printer.

With **CoXist Pro** software, you can save the converted DigiPath files to the imageRUNNER Pro 150VP printer's controller as a PostScript file. This functionality allows you to gradually convert DigiPath files into PostScript files that contain imageRUNNER Pro 150VP printer job ticket information mapped from the original DigiPath file. You can also have Xerox RDO files converted into PostScript format through Canon's RDO Conversion Service.

THIRD-PARTY VALUE-ADDED SOLUTIONS

The imageRUNNER Pro 150VP printer is designed to work easily with third-party software and hardware solutions in order to give you the highest degree of flexibility when configuring your equipment. The third-party providers summarized below offer solutions that integrate seamlessly with the imageRUNNER Pro 150VP device to address customer- and industry-specific needs.

Objectif Lune

The Objectif Lune PlanetPress® Suite enables variable data documents and forms printed on legacy and proprietary impact printers to transition to the networked, speedy, and feature-rich Canon imageRUNNER Pro 150VP printer.

Solimar Systems

Solimar's Print/Director software makes it possible for the imageRUNNER Pro 150VP printer to accept jobs intended for Xerox or IBM® equipment, without requiring the user to rewrite applications in order to output PostScript, PCL, or other data stream formats.

Rochester Software Associates (RSA)

M.I.S. Print, IPDS Print, and DTPrint software by RSA automatically convert line printer, Xerox LCDS (DJDE, Metacode, and XES/UDK), and AFP/IPDS datastreams into a format that can be printed on the imageRUNNER Pro 150VP printer.

Formscan

The Formscan verification solution, named "Vision 2000," provides closed-loop verification of the MICR printing process, including MICR-quality scoring and positioning, job balancing, sequence and base stock verification, and audit trail creation.

Roll Systems Inc.

Roll System's DocuSheeter LS increases the productivity of your imageRUNNER Pro 150VP device with in-line roll-feeding capabilities.

Standard Hunkeler

The SF4-H Sheet Feeder can be configured with the imageRUNNER Pro 150VP printer to enable hours of continuous-run operation.

ASMARC

The ASMARC Finisher Conveyor, built by Automecha, provides continuous unload and access to completed sets from the imageRUNNER Pro 150VP Finisher. No interface kit is required.

Challenge Machinery

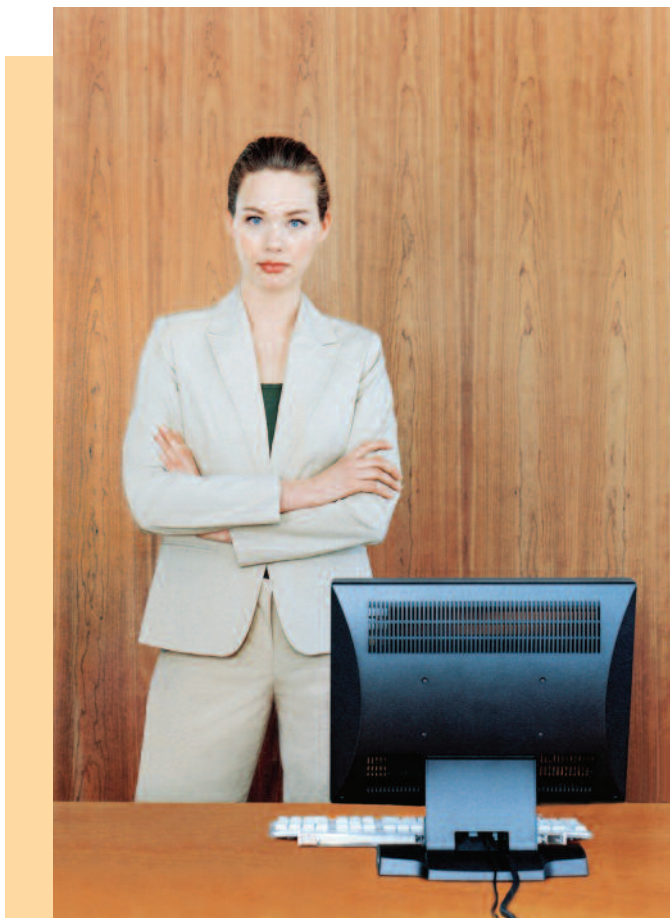
The CMT330 Three-knife Trimmer, manufactured by Challenge Machinery, is a three-sided trimmer designed for use with the imageRUNNER Pro 150VP device's Perfect Binder option. No interface kit is required.

Coverbind/Bindomatic

The Coverbind/Bindomatic 301 provides an in-line thermal binding solution that requires no trimming, venting, or special power requirements. It's a great alternative to tape binding and perfect binding. An Accessory Interface Box is required for integration.

CUSTOM SOLUTIONS

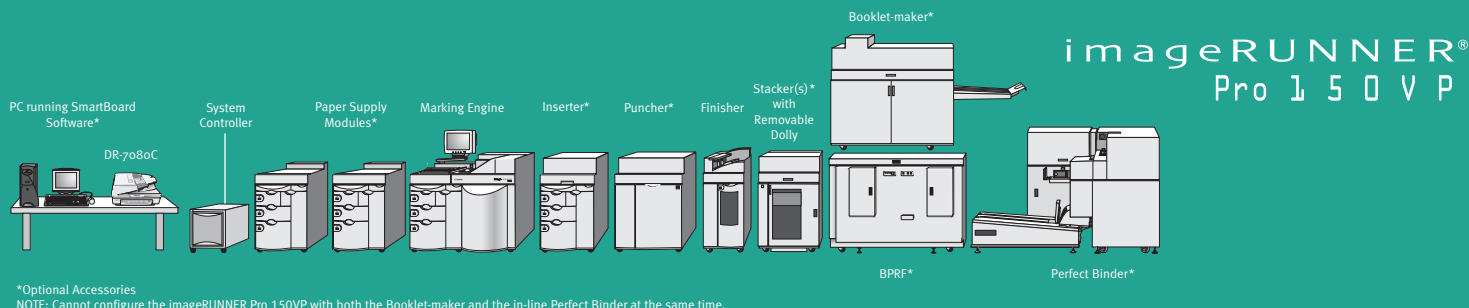
Canon understands that, occasionally, a customer may have a highly specialized workflow requirement that is not met through our standard product offerings. With this in mind, Canon created a “customization” program for the imageRUNNER Pro 150VP device. Customer requests for hardware and software solutions outside of our current product portfolio are evaluated and may be made available as a “custom” solution at an additional cost. Please check with your Authorized Canon Dealer for more information.



COUNT ON CANON

As the leading brand of network-connected imaging devices in the industry, Canon imageRUNNER products are known for open architectures, modular design, and reliable performance. The imageRUNNER Pro 150VP device illustrates, once again, the Canon commitment to deliver high-quality, innovative solutions to market.

Additionally, every Canon imageRUNNER Pro 150VP printer is backed by a network of experienced dealer organizations and expert sales, service, and technical support groups. You see, at Canon we all work together to ensure that you receive the level of customer service you not only expect, but also deserve.



imageRUNNER Pro 150VP Specifications

Configuration/Platen:	Digital, Multifunction Imaging System
Imaging System:	Electrophotographic Process
Developing System:	SPD, Two Component Dry
Acceptable Originals:	Sheets, Transparencies, Tabs, Covers
Max. Originals Size:	14.33" x 18.5"**
Min. Originals Size:	7" x 8.27"**
Max. Print Size:	14" x 18.25"
Engine Resolution:	600 x 600 dpi
Paper-feeding:	6-drawer Modular
Paper Capacity	
Standard:	8,000 Sheets
	Drawer 1, 4 (Top): 1,000 Sheets (20 lb.)
	Drawer 2, 5: 1,000 Sheets (20 lb.)
	Drawer 3, 6: 2,000 Sheets (20 lb.)
Maximum:	12,000 Sheets*
Acceptable Paper Weight:	16 lb. Bond to 150 lb. Index (All Cassettes)*
Duplexing:	Trayless Duplexing (Except Tabs)
Warm-up Time:	6 Minutes
Maximum Print Speed:	150 ppm (LTR/LGL), 75 ppm (LDG)
Dimensions (H x W x D):	64" x 155" x 47" (163cm x 394cm x 119cm)
Weight:	3,240 lb. (1469kg)
Power Requirements	
(V/Hz/Amps):	208/60/30
Noise Level (Printing):	<70dB
Duty Cycle:	3 to 5 Million Impressions per Month**
Developer:	1.69kg—Estimated Yield: 1,200,000 Prints (LTR)
Toner:	2.5kg—Estimated Yield: 80,000 Prints (LTR, 6% Coverage)

Accessories

Finisher	
Number of Trays:	2 Trays
Tray Capacity	
Top Tray:	500 Sheets (All Sizes) Non-staple Mode
Staple Tray:	3,000 Sheets (Straight or Offset/ 85 Sets with Staple)
Paper Size	
Top Tray:	7" x 8.27" to 14.33" x 18.5"**
Staple Tray:	7" x 8.27" to 9" x 14"**
Staple Position:	Multiposition Stapling
Stitching Capacity:	None, Top, Bottom, Both
Document Delivery:	Face-down
Staples:	50,000
Power Supply:	Directly from Main Unit
Weight:	650 lb. (294.7kg)
Dimensions (H x W x D):	61.5" x 22.5" x 34" (156cm x 58cm x 86cm)

DR-7080C (Optional)	
Optical Resolution:	600 x 600 dpi
Speed (Simplex/Duplex LTR):	70 ppm/36 ipm
Paper Feeder Capacity:	100 Sheets (LTR, 20 lb.)
Document Size:	ADF (Width) 5.5"—12" ADF (Length) 5"—17"
Paper Weight Range:	13 lb.—32 lb. Bond (50-128 g/m2)
Weight:	74 lb.
Dimensions (H x W x D):	11.8" x 22.6" x 23.7"

Paper Supply Module (Optional)	
Number of Trays:	3 Cassettes
Tray Capacity	
Drawer 7 (Top):	1,000 Sheets (20 lb.)
Drawer 8:	1,000 Sheets (20 lb.)
Drawer 9:	2,000 Sheets (20 lb.)
Paper Size:	16 lb. Bond to 150 lb. Index*
Weight:	545 lb. (247.4kg)
Dimensions (H x W x D):	45" x 35.5" x 31.5" (114cm x 90cm x 85cm)

Post-process Inserter (Optional)	
Number of Trays:	3 Cassettes
Tray Capacity	
Drawer 1 (Top):	1,000 Sheets (7" x 8.27" to 9" x 14")*
Drawer 2:	1,000 Sheets (7" x 8.27" to 14.33" x 18.5")*
Drawer 3:	2,000 Sheets (7" x 8.27" to 14.33" x 18.5")*
Paper Weight:	16 lb. Bond to 150 lb. Index*
Weight:	610 lb. (276.7kg)
Dimensions (H x W x D):	49.5" x 31" x 33.5" (125.7cm x 78.7cm x 85.1cm)

Puncher (Optional)	
Power Requirements:	120 VAC, 60Hz, 2.5A 100 VAC, 50/60Hz, 2.5A
Power Consumption:	320 VA
Dimensions (H x W x D):	49.6" x 40.2" x 31.9" (126cm x 102cm x 81cm)
Weight:	595 lb. (270kg)
Punch Tools	
	• Loose-leaf/Office Hole-punch Tool (2-/3-/4-hole)
	• Plastic Comb Punch Tool (Rectangular)
	• Wire Comb Punch Tool 2-1 Pitch (Round)
	• Wire Comb Punch Tool 3-1 Pitch (Round)
	• Wire Comb Punch Tool 2-1 Pitch (Rectangular)
	• Wire Comb Punch Tool 3-1 Pitch (Square)
Punch Tool Durability:	12 - 15 Million Actuations

Stacker (Optional)†	
Number of Trays:	1 Tray
Tray Capacity:	5,000 Sheets (Straight or Offset Non-staple)

Paper Size:	7" x 8.27" to 14.33" x 18.5"**
Rotator Unit:	Rotates 8-1/2" x 11" Portrait Sheets 90 Degrees
Document Delivery:	Face-down
Power Supply:	115V
Weight:	450 lb. (203.7kg)
Dimensions (H x W x D):	49.5" x 33" x 31.6" (125.7cm x 84.8cm x 78.7cm)

Booklet-maker (Optional)	
Tray Capacity:	Conveyor Belt Output
Paper Size:	8" x 10" to 14" x 18"
Stitching Capacity:	2 to 22 Sheets
Stitching Position	
Single-position Stapling:	2 Center Staple Positions
Saddle-stitched Specifications	
Folding:	V-folding
Folding Capacity:	1 to 22 Sheets (20 lb. Bond)
Trimming:	Edge Trim Folded Booklets (Adjustable Trim Width)
Staple Wire Spool:	40,000 (100-sheet Stitches)
Power Supply:	115V
Weight:	970 lb. (439.8kg)
Dimensions (H x W x D):	58" x 100" x 24" (147.2cm x 254cm x 58.4cm)

BPRF (Optional)	
Power Requirements:	120 VAC, 60Hz
Power Consumption:	920 Watts
Dimensions (H x W x D):	51" x 64" x 31" (129cm x 162cm x 78cm)
Weight:	562 lb. (255kg)

Perfect Binder (Optional)	
Book Thickness:	15 Sheets to 1.5" (40mm) about 350 Sheets @ 20 lb. Bond
Book Size (In-line Binding):	8.5" x 11"
Book Size (Off-line Binding):	2.36" x 4" to 12" x 14" (60mm x 100mm to 305mm x 356mm)
Weight (with Input Unit, Delivery, and Bypass):	1,676 lb. (760kg)
Dimensions with Bypass (H x W x D):	45" x 8'4" x 5'11" (1.2m x 2.6m x 1.8m)

Roll Feed Interface Kit (Optional)	
Supports Roll Systems DocuSheeter LS	
Supports Standard Hunkeler SF4-H Sheet Feeder	

Multi-stacker Interface Kit (Optional)	
Supports up to three Stackers on one device	
One kit is required for each additional Stacker	

Optional Features	
MICR printing*	
Enhanced Feed Mode*	
Digital Print Quality Adjustments*	
PCL Interpreter*	
Extended Paper Size Range*	

* Optional license upgrade is required.
** Depends on customer job stream and number of shifts.
* With optional Paper Supply Module(s).
† Stacker is required for Booklet-maker and Perfect Binder.
* Other optional scanners may be available. Please check with your local Authorized Canon Dealer.
* Caliper must fall within 3.5mil to 10mil (0.09mm to 0.25mm).

Adobe, PostScript, and the PostScript logo are registered trademarks of Adobe Systems Incorporated in the United States and/or other countries. Sun is a service mark of Sun Microsystems, Inc. in the United States and other countries. MicroPress is a registered trademark of Electronics for Imaging, Inc. in the U.S. Patent and Trademark Office and/or certain other foreign jurisdictions. Digital StoreFront is a trademark of Electronics for Imaging, Inc. PlanetPress is a registered trademark of Objectif Lune. UNIX is a registered trademark of the Open Group in the U.S. and other countries. XEROX is a trademark of Xerox Corporation in the U.S. and/or other countries. IBM is a registered trademark of IBM in the United States. MultiStream is a trademark of Captiva Software Corporation. CANON and IMAGERUNNER are registered trademarks, and SMARTBOARD and the GENUINE Logo are trademarks of Canon Inc. in the United States and may also be registered trademarks or trademarks in other countries. IMAGEANYWARE is a trademark of Canon. All referenced product names and other marks are trademarks of their respective owners. Specifications subject to change without notice.
©2006 Canon U.S.A., Inc. All rights reserved.

0059W493
0206R-IRPRO150VP-5M-LV



PRINTED ON RECYCLED
PAPER IN THE U.S.A.

Canon
image*ANYWARE*

1-800-OK-CANON
www.usa.canon.com

Canon U.S.A., Inc.
One Canon Plaza
Lake Success, NY 11042

