



# Future-Ready A3 Office Solutions

Kyocera's latest TASKalfa MFPs are here to support your digital transformation and unlock the power of your information.



## TASKalfa MZ700li/MZ700li Series

Seamless cloud connectivity

Advanced data capture and AI functionalities

Top-tier security

Intuitive and user-friendly interface

# Meet the new TASKalfa line

Kyocera is a customer-centric and people-first company, meaning we put the end-user at the heart of our product design.

The TASKalfa MZ7001ci/MZ7001i Series is designed to support your transition to digital workflows and the cloud, offering seamless connectivity, improved data capture and AI functionalities, a user-friendly interface and advanced security. Unlock the power of your information with peace of mind.



The series consists of **six A3 colour MFPs**:

TASKalfa MZ2501ci

TASKalfa MZ3501ci

TASKalfa MZ4001ci

TASKalfa MZ5001ci

TASKalfa MZ6001ci

TASKalfa MZ7001ci

And **three monochrome MFPs**:

TASKalfa MZ5001i

TASKalfa MZ6001i

TASKalfa MZ7001i



Reliable and user-friendly



Cloud ready



Optimised data management



Seamless integration



Efficient AI features



Productive and efficient



Top-tier security



Environmentally friendly

# Your partner in office productivity

The TASKalfa MZ7001ci/MZ7001i Series, boasts a range of features making your office more sustainable, secure and efficient.



## Effortless cloud integration

Waste no time connecting to the cloud with pre-installed scanning, printing and data capture tools ready to activate. Optimise your cloud printing workflows from day one!



## Save time with AI

Print with confidence thanks to AI Image Defect Prevention. Eliminate the admin of manual page and reallocate your time to business priorities. Efficient AI saves you time and reduces the risk of data loss.



## K-level security

Your data, safe and sound. We protect your business from data and compliance breaches by utilising top-tier security features, including advanced encryption, secure print release and AI Confidential Document Guard.



## Simplified scanning

Enjoy hassle-free scanning with the auto crop function (extraction and clipping) and centring function. You can now copy and scan ID cards to the centre of the paper without worrying about the position or tilt on the original glass.



## Sustainability you can see

Watch the impact of your decisions with real time power consumption and CO<sub>2</sub> emissions displays. The updated control panel keeps sustainability top of mind while simplifying the user experience.



## Unlocking the power of your data

High-speed scanning lets you digitise documents quickly and efficiently. Working in combination with cloud content management systems allows you to tag and organise documents, boosting the accessibility of key business information.

# Streamline your workflows with cloud-ready MFPs

## Unlock the power of information

Effortlessly scan paper documents from your device to business cloud storage solutions such as KCIM, Google Drive, OneDrive Business, or Sharepoint. Your data, ready for when you need it. You can even scan straight to your email for easy and instant access.

Take advantage of a 1-year free trial of the Scan to Cloud functionality of Kyocera Cloud Capture (KCC), pre-installed and ready to activate with just a few steps.

\*Please contact your provider for further information to start using Scan to Cloud

Employing KCC leads to:

More efficient data retrieval

Reduced document management costs

Greater operational efficiency and security



## Scalable document management

Simple document management is good document management. Store, categorise and secure your business data with a centralised cloud solution. Kyocera Cloud Information Manager (KCIM) boosts the productivity of remote workers, fortifies data security and grows with your business.

KCIM comes pre-installed and just a few steps away from activation in the TASKalfa MZ7001ci/MZ7001i Series MFPs.

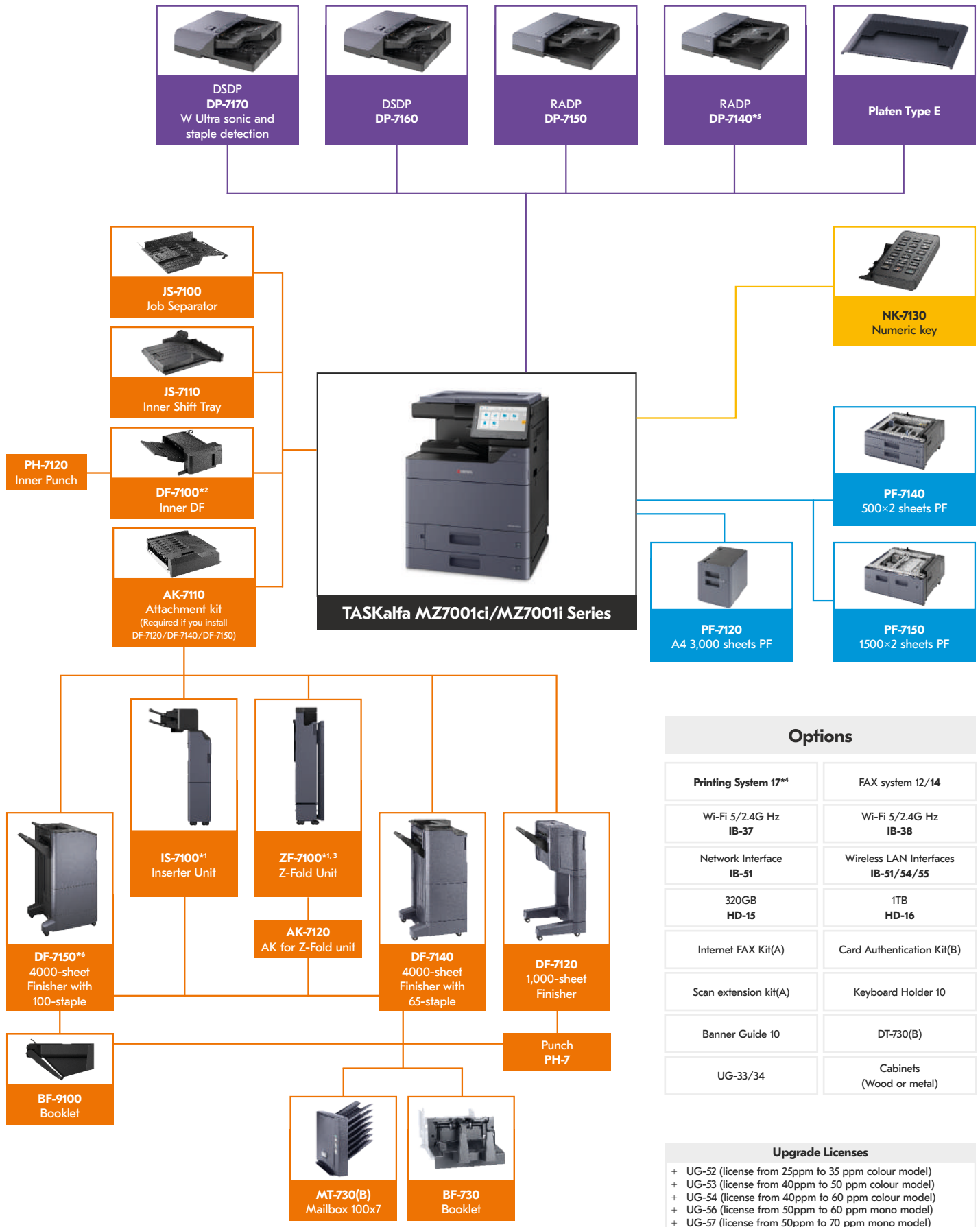
## Seamless printing and scanning

Dynamic workplaces require solutions that can keep up. Print and scan on the go, directly to the cloud with Kyocera Print and Scan (KCPS). Remove the costs of print servers and give your administrators the ability to remotely track and monitor print activities.

KCPS comes pre-installed and just a few steps away from activation in the TASKalfa MZ7001ci/MZ7001i Series MFPs.



# Meet the TASKalfa MZ700Ici/MZ700Ii Series



\*1 Support for only 60ppm/70ppm only  
 \*2 No support for 70ppm  
 \*3 AK-7120 is needed with Z-fold unit  
 \*4 Support for Color 40/50/60/70ppm

\*5 Support for only 25ppm/35ppm only  
 \*6 Support for only 40/50/60/70ppm

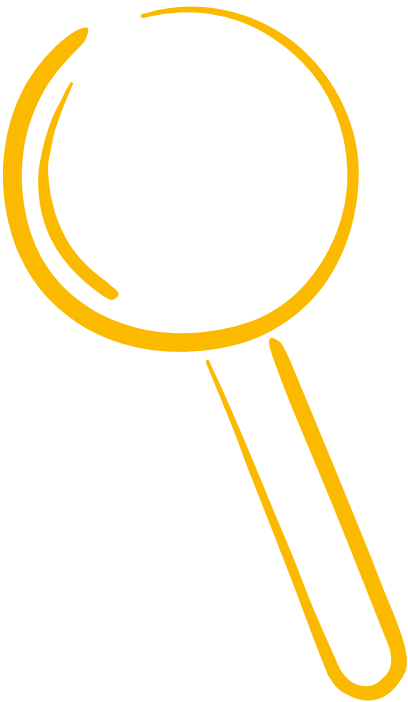
# How does the TASKalfa MZ7001ci/MZ7001i Series differ?

## The Colour Range

	TASKalfa MZ2501ci (Base model)	TASKalfa MZ3501ci (Base model + speed license UG-52)	TASKalfa MZ4001ci (Base model)	TASKalfa MZ5001ci (Base model + speed license UG-53)	TASKalfa MZ6001ci (Base model + speed license UG-54)	TASKalfa MZ7001ci (Base model)
Operation panel	256.5 mm (10.1 inch) Resistive full-colour touch panel display		256.5 mm (10.1 inch) Capacitive full-colour touch panel display			
Engine speed (A4/A3)	25/12	35 / 17	40 / 20	50 / 25	60 / 30	70 / 35
Duplex print / copy speed (A4 pages per minute)	25	35	40	50	60	70
Resolution	1,200 x 1,200 dpi					
Warm-up time (sec)	<18		<17			<26
Time to first print (sec) (mono/colour)	7.0 / 9.2	5.9 / 7.7	4.5 / 5.9	4.3 / 5.4	3.8 / 5.1	3.7 / 5.0
Time to first copy (sec) (mono/colour)	6.4 / 8.5	5.3 / 7.0	5.1 / 6.5	3.7 / 4.8	3.4 / 4.4	
CPU	Panther ARM A53 (Quad core) 1.6GHz					
Memory (GB)	4 RAM + 64 SSD + optional 1TB HDD		4 RAM + 128 SSD + optional 1TB HDD			
Dimensions (W x D x H)	602 × 665 × 790 mm					
Weight (kg)	90		95			
Power source	AC 220 - 240 V, 50/60 Hz					
Power consumption (print/copy)	450 W	590 W	660 W	780W	990W	2400W
Ready Mode	45W					

## The Monochrome Range

	TASKalfa MZ5001i (Base model)	→ TASKalfa MZ6001i (Base model + speed license UG-56)	→ TASKalfa MZ7001i (Base model + speed license UG-57)
Operation panel	256.5 mm (10.1 inch) Capacitive full-colour touch panel display		
Engine speed (A4/A3)	50 / 25	60 / 30	70 / 35
Duplex print / copy speed (A4 pages per minute)	50	60	70
Resolution	1,200 x 1,200 dpi		
Warm-up time (sec)	<17		
Time to first print (sec) (mono/colour)	4.3	3.8	3.7
Time to first copy (sec) (mono/colour)	3.7	3.4	
CPU	Panther ARM A53 (Quad core) 1.6GHz		
Memory (GB)	4 RAM + 128 SSD + optional 1TB HDD		
Dimensions (W x D x H)	602 × 665 × 790 mm		
Weight (kg)	83		
Power source	AC 220 - 240 V, 50/60 Hz		
Power consumption (print/copy)	660W	770W	850W
Ready Mode	40W		



## Notes:

Kyocera Document Solutions has championed innovative technology since 1934. We enable our customers to turn information into knowledge, excel at learning and surpass others. With professional expertise and a culture of empathetic partnership, we help organizations put knowledge to work to drive change.

Kyocera Document Solutions Europe Management B.V.  
Beechavenue 27 \* 1119 RA, Schiphol-Rijk The Netherlands  
Tel +31 (0) 20-654-0000 — Fax +31 (0) 20-653-1256



[kyoceradocumentsolutions.eu](http://kyoceradocumentsolutions.eu)