

KIP 3000

DIGITAL COPIER ■ NETWORK PRINTER ■ SCANNING SYSTEM



MULTIFUNCTION SIMPLICITY

KIP

KIP 3000 DIGITAL COPIER

Key Digital Copier Features

- Fully integrated 1 or 2 roll digital copy system
- Touch screen user interface provides easy operation
- Integrated copy stacker
- Collated sets copying
- Real-time image viewing
- Recall and resize previous jobs
- Zoom ratios for enlargement/reduction
- Mirror and invert copies
- Auto and manual image quality settings
- Integrated operator authorization system
- Automatic media selection
- Tracks all usage for accounting purposes

Multifunction Simplicity

The KIP 3000 is a highly advanced wide format digital copy system that provides the ability to easily add network printing and scan-to-file capabilities! Designed for a wide range of imaging tasks, the KIP 3000 provides a solution to satisfy the requirements of every decentralized document printing environment.

Exceptionally Simple, Simply Exceptional

The KIP 3000 digital copier system accurately reproduces technical documents at true 600 x 600 dpi resolution. Copies may be delivered to the integrated front stacker or directed to a rear KIP stacking system. Media capacity consists of one or two roll drawers, plus a manual bypass for single copies onto specialty media. The touch screen operator panel provides the graphical user interface, which is used for all system applications. An integrated authorization system may be activated, which requires each operator to enter a personal identification number before utilizing the KIP 3000. In addition, operational security levels can be set for each user, department or project!



KIP

KIP 3000 NETWORK PRINTER

Powerful, Versatile and Efficient

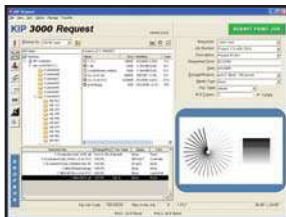
Network print jobs may be sent to the KIP 3000 by remote users of KIP Request® software. Jobs are transmitted to the print queue with required print size, number of copies or sets, media selection, stamping, folding and pen settings. Extensive print previewing capabilities allow users to inspect image settings before printing. In addition, KIP Request provides remote users with KIP 3000 status information and remote print queue viewing and management.

Complete Control

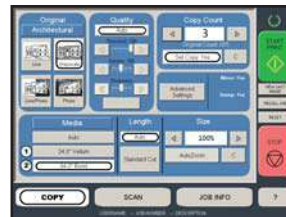
The easily accessible KIP 3000 print queue displays all copying and network printing jobs, including number of copies or prints. Operators also have the ability to manage the print queue by changing the priority of copy or print jobs.

Key Network Printer Features

- Complete printing software and application drivers included
- Integrated Image Processing System ensures high quality printing
- Automatically collate up to 999 documents per set
- Remote print queue management
- Automatic file format detection
- Advanced pen management and dither controls
- Digital enlargement/reduction 5% - 3,600%
- Schedule print jobs by date and time
- One-step file viewing, panning, and zooming
- Unlimited site license



KIP Request provides an efficient method of printing single documents or collated sets through the network.

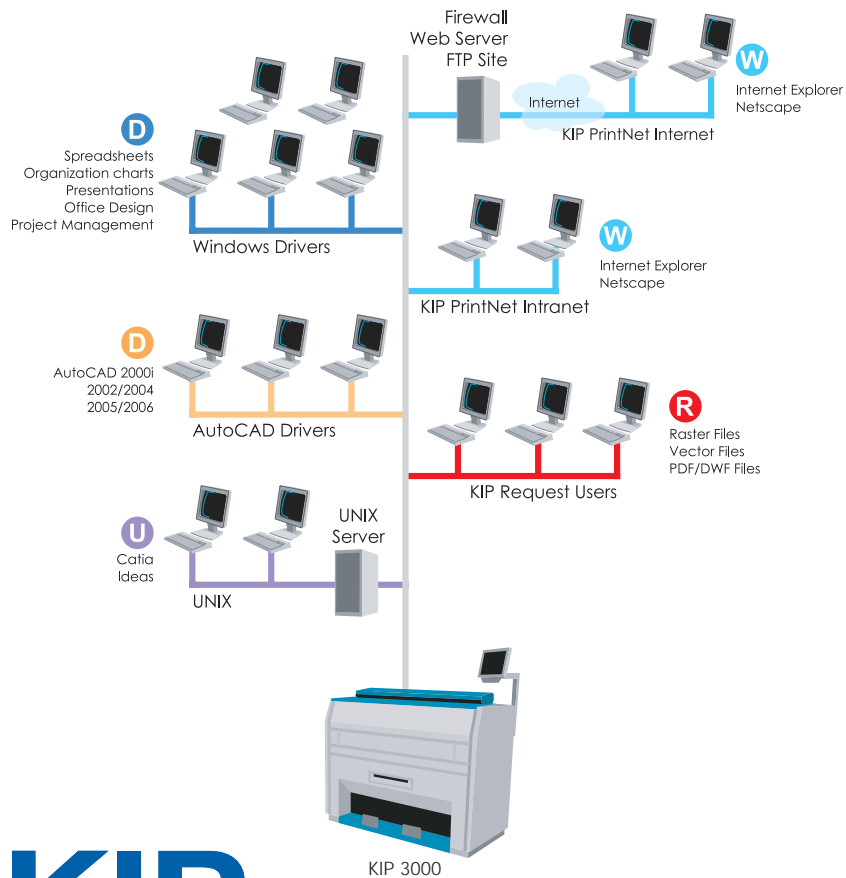


The operator panel provides basic and advanced features designed to streamline digital copying.



Advanced print queue allows for easy management of both copying and printing.

KIP PRINTING APPLICATIONS



Get Connected

The KIP 3000 is designed to provide fast and easy network connectivity for any type of network environment. The integrated KIP 3000 Image Processing System utilizes the widely adopted TCP/IP networking protocol for reliable and flexible network connectivity. The KIP 3000 has the ability to process a variety of files from virtually any type of application.



- R** KIP Request is an easy-to-use application that provides remote users with an efficient method of printing single documents or collated sets through the network.
- W** KIP PrintNet is a web-based printing utility compatible with standard web browsers which shares a similar interface with KIP Request software.
- D** KIP AutoCAD drivers enable printing directly from AutoCAD® technical design applications.
- D** The KIP Windows driver enables printing directly from all types of Windows® based applications.
- U** Standard TCP/IP connectivity ensures easy integration with UNIX/Mac based software applications.

KIP

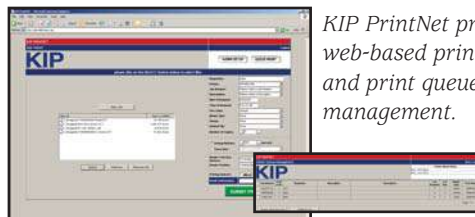
KIP 3000 WEB PRINTING AND MORE

KIP PrintNet

KIP PrintNet is a web-based printing utility compatible with standard web browsers. Authorized users may select and send single or multiple files to all KIP systems connected to the local network or the internet. Due to a uniform interface, users of KIP Request software will be instantly familiar with the operation of KIP PrintNet, providing a seamless transition between online and offline operations.

KIP PrintNet users have access to basic and advanced features similar to KIP Request software.

- Username/password security
- KIP Request based accounting features
- Single or multiple file selection with collate option
- Select copy count, media type and enlargement/reduction
- Print queue management and system status viewing



KIP PrintNet provides web-based printing and print queue management.

DWF and PDF Support

The DWF file format from Autodesk® is fully integrated with KIP digital printers and KIP network printing software. This feature allows users to view and print designs published to DWF format from Autodesk applications.

KIP Powerscript provides KIP 3000 operators with the power to quickly and effectively interpret complex PostScript® and PDF® files into wide format prints.

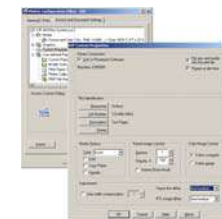
KIP 3000 Print Drivers

The Windows driver supports Windows® printing features including set collation, fast spooling for multiple copies or sets, data tracking for job accounting and media selection.

The KIP AutoCAD drivers offer unique data tracking by username and job number. To assist in making printing decisions, two-way printer status allows users to view roll and media information.



Windows Drivers for a wide range of print-ready applications.



AutoCAD Drivers for versions 2000-2006 are fully integrated with KIP Request.

KIP 3000 SCANNING SYSTEM

Key Scan-to-File Features

- Integrated scan system provides compact footprint
- No additional PC or PC components required
- Scanning speeds up to 7.1 inch/sec.
- Scan directly to PDF format
- Real-time scan viewing
- Scan-to-file and print documents simultaneously
- Scan images to personal or project mailbox
- Easily retrieve scanned image files with KIP Request software
- Selectable resolution - up to 600 dpi optical
- Automatic original size recognition
- Auto and manual image quality settings

Digital Precision

The KIP 3000 delivers powerful scan-to-file features designed to cover the entire range of decentralized scanning applications. KIP 3000 operators benefit from highly advanced monochrome scanning technology that enables precise imaging of the full spectrum of architectural, engineering and other wide format technical documents.

Operational Convenience

Documents can be scanned to a variety of standard file formats including PDF and then saved to a designated location. For maximum convenience, the destination of the scanned image is selected by the operator. Each scan can be directed to an FTP address, personal or project mailbox. Password protected operation ensures that each scan is fully accounted for and ensures that only authorized personnel have access to system features.



KIP 3000 OPERATOR PANEL

Account for every copy, print and scan

Comprehensive control and management of digital documents is a rapidly growing priority. System administrators are equipped with an array of sophisticated but easy-to-use print monitoring, management and accounting tools - all available via the network or at the KIP 3000 operator panel. With the ability to apply security settings for each user, department and project, efficient print administration has never been simpler.

Instant Upgrades

Thanks to its integrated design, the KIP 3000 digital copier may be upgraded to a copier + network printer or copier + network printer + scanning system at any time! Feature upgrades are easily accomplished by utilizing the operator panel to enter a special key code that will activate the new feature.

Operator Assistance

The KIP 3000 operator panel displays illustrated guides to explain system operations including copy and scan-to-file. In addition, step-by-step media and toner replacement procedures are automatically displayed when necessary to provide users with system instructions.

Information Center

The KIP 3000 is configured to display contact information specific to the KIP Authorized Service Company. This feature is designed to assist operators when requesting consumables, service calls and upgrades. Additional information includes:

- Scan, copy and print counts
- Software and firmware versions
- System identification numbers and network settings



Integrated operator authorization system provides security for all system functions.



Upgrade KIP 3000 features with an integrated key code entry system.



Illustrated guides present easy to understand operator instructions.



KIP 3000 information center provides important system status details.

KIP 3000 SERIES SPECIFICATIONS

CONFIGURATION:

Console - Single Footprint

PRINTING METHOD:

LED Array Electro-Photography

PHOTORECEPTOR:

Organic Photoconductive Drum

PRINT SPEED:

4 'D' size per minute

RESOLUTION:

600 x 600 dpi

MEDIA SIZE:

Maximum Print Width: 36"

Minimum Print Width: 11"

MEDIA WEIGHT:

Plain paper: 18 - 24lb

Tracing paper: 18 - 20lb

Film: 3.5 - 4 mil

WARM UP TIME:

Instant from standby

FIRST PRINT TIME:

24 seconds

FUSING METHOD:

Heat - pressure

DEVELOPMENT METHOD:

Dry, non-magnetic mono-component toner

INPUT POWER:

120V +6% or -10%, 50/60Hz, 15A

DIMENSIONS:

49"(W) x 24"(D) x 44"(H)

WEIGHT:

430 Lbs. (1 roll), 440 Lbs. (2 roll)

ENVIRONMENTAL RATING:

ENERGY STAR® Qualified

PRINT LANGUAGES:

Supported data formats include:

- DWF
- PDF
- TIF Group 4, Cals Group 4, Government C4, Intergraph CIT/TG4, IBM IOCA, JPG, Uncompressed Grayscale TIF, Uncompressed Color TIF
- Postscript Level 3
- HPGL, HPGL/2, Calcomp 906/907, CGM, HP-RTL

KIP APPLICATIONS AND DRIVERS:

- KIP Request provides an efficient method of reviewing and sending single files or collated sets for printing.
- KIP Driver Pack includes Windows and AutoCAD Drivers to enable printing from supported applications.
- KIP PrintNet is a web-based print utility compatible with standard web browsers.



KIP AMERICA

Phone: (800) 252-6793

Email: info@kipamerica.com

Website: www.kipamerica.com

KIP CANADA

Phone: (800) 653-7552

Email: info@kipcanada.com

Website: www.kipcanada.com

AutoCAD and DWF are registered trademarks of Autodesk Inc. Windows is a registered trademark of Microsoft. KIP, KIP 3000 and KIP Request are registered trademarks of KIP. All other product names mentioned herein are trademarks of their respective companies. All specifications are subject to change without notice.