



KONICA MINOLTA

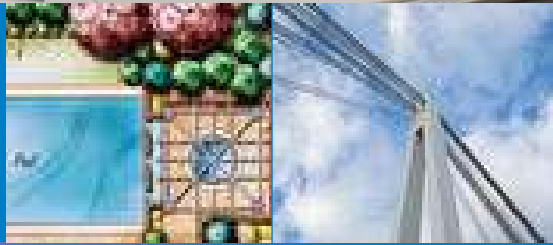


CONNECT _ COMMUNICATE _ CONTROL _

KIP 7000 Series

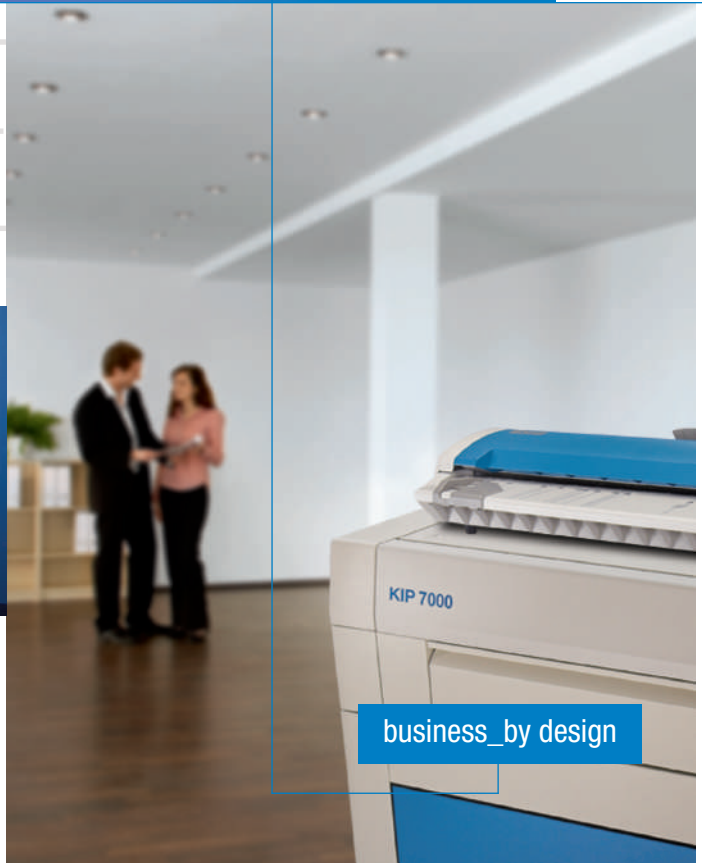
HIGH DEMAND PRODUCTION SYSTEMS

Powerful new high volume wide format digital system, designed to provide high productivity and superior image quality.



WIDE

FORMAT



business_by design

KIP 7000 series systems are exceptionally powerful print, copy and scan solutions that provide high demand users with the ultimate in imaging technology and production speed.

All KIP 7000 systems feature a full suite of state of the art printing, copying and scanning software to ensure excellent performance across all monochrome and color imaging applications.

KIP 7000 SERIES SYSTEMS: high demand production systems



CONNECT _ COMMUNICATE _ CONTROL _



KIP 7000 Print Systems. The KIP 7000 network print system increases print production possibilities by delivering high volume output with exceptionally reliable performance. The system efficiently produces documents sent via application drivers, network PCs or over the internet. The KIP 7000 meets the toughest printing demands of virtually any digital imaging environment and may be easily upgraded to incorporate monochrome and color copying and scanning features.



KIP 7000 Print, Copy and Scan Systems. The KIP 7000 system easily handles high demand monochrome and color scanning applications, providing the capability to scan any original into a variety of digital file formats for use at network PCs, or create color copies directly to inkjet printers. In addition, monochrome documents containing lines, text, grayscales and graphic images are quickly and accurately printed, copied or scanned by the KIP 7000.



Available in three configurations. The KIP 7000 is available in three main configurations: KIP 7000 Print System, KIP 7000 Print, Copy & Scan System and KIP 7200 Production System.

KIP 7000 PRINTER KEY FEATURES

- ▶ Prints 13 ' D' size sheets per minute at 600 x 600 dpi resolution
- ▶ 100% toner efficient operation from 4 media rolls
- ▶ Integrated touch screen display provides advanced system management
- ▶ KIP software and application drivers included with each system

KIP 7000 PRINT, COPY AND SCAN KEY FEATURES

- ▶ Single, space saving system footprint with no need for additional PCs
- ▶ Create color copies directly to inkjet printers
- ▶ Scan documents into a wide range of monochrome and color file formats
- ▶ Image presets with real time copy and scan previews provide maximum quality control

KIP 7200 PRODUCTION SYSTEM KEY FEATURES

- ▶ Exceptionally durable scanner construction ensure reliable operation and consistent image quality for production environments
- ▶ Covers the full range of monochrome and color imaging applications without sacrificing speed or resolution
- ▶ KIP technology delivers enhanced monochrome images with maximum fine line and grayscale accuracy
- ▶ Create superior copies to inkjet printers and accurate scans from complex color originals
- ▶ Copy and print to multiple inkjets to maximize production of high quality, color matched copies
- ▶ Color copy capabilities include image paneling and nesting for optimum media usage with optional KIP Color Max software
- ▶ View and print digital files using advanced color management and image editing features with optional KIP Color Max software



KIP 7200 Production System. The KIP 7200 system employs highly advanced imaging technologies to deliver outstanding clarity and maximum production speed. A uniquely durable design and quality construction ensure reliable operation and consistent quality in high production imaging environments. Featuring a full suite of production printing, copying and scanning software, the KIP 7200 system expertly performs all monochrome and color imaging applications. Thanks to a robust document imaging system, complex graphics and photos are reproduced as accurately and efficiently as simple line drawings.

The KIP 7200 system may be configured as a compact integrated system, or split into separate printing and scanning stations for maximum productivity!

KIP 7000 SERIES: KIP 7000 print system



Monochrome Printing. The KIP 7000 network print system is a 600 dpi digital wide format printer with four roll media capacity and integrated cut-sheet bypass tray for prints or copies onto specialty media. A unique print head design featuring individual calibration of all LED pixels provides smooth and consistent image fine line, grayscale and graphic image quality.

KIP High Definition Print Technology (HDP). The KIP 7000 printer features KIP High Definition Print Technology (HDP) or the highest quality monochrome images. KIP HDP Technology reproduces the full spectrum of technical, engineering and architectural documents with complete accuracy and confidence.

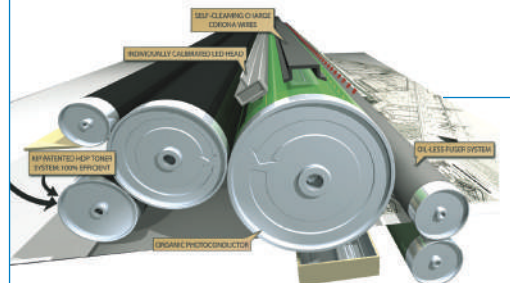
Image Processing System. The KIP Image Processing Software suite delivers a wide range of printing benefits; including web-based & network printing, application drivers, automated metering, remote system monitoring and simple user operation.

Expandable Technology. Start with a network printer and add copy and scan capabilities to grow with business demands. The KIP 7000 has been designed to deliver unrivaled quality and flexibility to meet the ever increasing demand for accurate and cost effective wide format document reproduction.

KIP 7000 PRINTER FEATURES

- ▶ Integrated touch screen operator panel
- ▶ 600 x 600 dpi resolution
- ▶ Production speed of 13 'D' size prints per min.
- ▶ Auto-switching integrated 4 roll media capacity
- ▶ High Definition Line Quality
- ▶ Distinctive Grayscales & Solid Areas
- ▶ 100% Toner Efficiency
- ▶ Expanded Duty Cycle
- ▶ Energy Star Qualified
- ▶ Environmentally Friendly

- ▶ Automatic file format detection
- ▶ Supports all standard raster and vector formats
- ▶ Integrated DWF file format support
- ▶ PDF & Postscript file viewing and printing
- ▶ Communicate with PCs, print-servers, switching equipment, hubs and other network capable devices.
- ▶ Windows network connectivity via TCP/IP protocol
- ▶ Unix/Linux and Novell network connectivity spooled through LPR/LPD
- ▶ Apple network connectivity via LPR/LPD



KIP High Definition Print Technology delivers crisp line detail, solid blacks and consistent gray scales.



KIP 7000 SERIES: KIP 7000 print, copy & scan system



Monochrome Copying and Scanning. The KIP 7000 system accurately reproduces the full range of monochrome technical drawings, graphic renderings, maps and photographs. A range of convenient preset quality controls are available to assist operators with making proper monochrome imaging adjustments. To ensure maximum clarity, the system dynamically adjusts exposure settings during all monochrome copying and scanning applications.

Color Scanning. In addition to the full range of monochrome imaging features, the system provides the capability to scan color documents into a variety of high resolution file formats for use at PC workstations. Once scanning is complete, the image files are automatically delivered to the operator's choice of destination; network location, FTP site or personal project inbox.

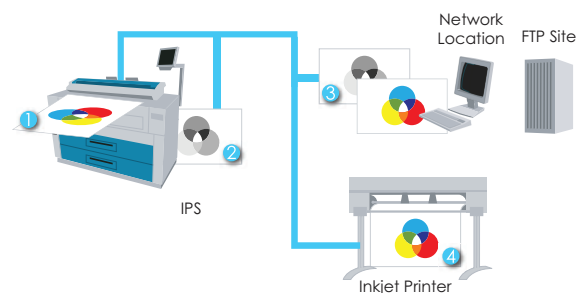
Color Copying. Fully integrated with a range of inkjet printers, the KIP 7000 print, copy and scan system delivers high quality color copies from all types of original documents. A unique closed-loop color calibration system ensures the highest level of copy accuracy based on the individual color capabilities and characteristics of each inkjet printer.

KIP 7000 SYSTEM FEATURES

- ▶ Single, space saving system footprint with no need for additional PCs
- ▶ Create color copies directly to inkjet printers
- ▶ Scan documents into a wide range of monochrome and color file formats
- ▶ Image presets with real time copy and scan previews provide maximum quality control
- ▶ Space saving single footprint
- ▶ The KIP 7000 copies the full range of monochrome originals
- ▶ Create copy sets from unlimited number of originals
- ▶ Direct color copies to a wide range of inkjet printers
- ▶ Closed-loop color calibration system ensures copy accuracy
- ▶ Designate image size, rotation and file name
- ▶ Preset quality selections for line, line/photo, and photo original types
- ▶ Scan to single or multi page TIFF and PDF formats for maximum flexibility

MONO/COLOR COPYING AND SCANNING

- 1 Monochrome or color document is inserted into scanner to begin the imaging process
- 2 Monochrome copies are produced by the KIP 7000 System
- 3 Monochrome or color scanned image files may be directly transmitted to a specified network location, such as a server or the operator's PC
- 4 Direct color copies are produced by the inkjet printer





KIP 7000 SERIES: KIP 7200 modular production system

Production Imaging. The KIP 7200 system is a professional grade monochrome print and mono/color copy & scan solution that provides high demand users with the ultimate in imaging technology.

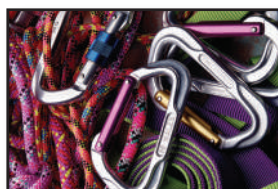
Enhanced Monochrome Image Quality. The KIP 7200 system makes monochrome technical documents look better than ever. Exclusive KIP imaging technology creates crisp, black and white prints, copies and scans from all types of monochrome technical drawings, photographs, maps and graphic renderings. An advanced grayscale mode captures the full range of gray with no image drop-out or down sampling and is ideal for making accurate photo reproductions on inkjet printers.

World Class Color Quality. The KIP 7200 system features professional grade, 24-Bit color imaging to ensure the highest quality color photo and graphical reproductions. Create high resolution color copies on inkjet printers, or scan extremely detailed color originals into a variety of file formats appropriate for E-mail, archive and printing purposes.

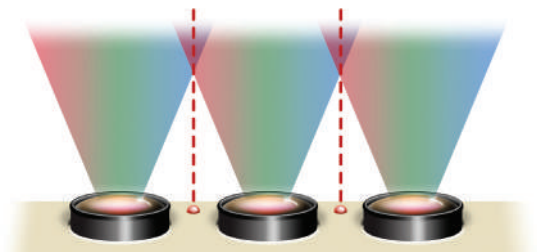
KIP Color Max Software. This powerful software package delivers advanced copying and scanning features and also includes the ability to RIP files to print. Users may print in monochrome or color to multiple printers, ensuring speed, flexibility and accurate production of high-quality color matched copies. KIP Color Max software provides advanced color management features and professional image editing tools that allow you perform difficult tasks easily and with consistent results from one job to the next.

KIP 7200 PRODUCTION FEATURES

- ▶ True 600 x 600 dpi optical resolution
- ▶ 24-Bit RGB True Color image capture
- ▶ Three independent imaging cameras
- ▶ KIP Real Time Thresholding technology
- ▶ Automatic image despeckling
- ▶ Monochrome image background removal
- ▶ Self-calibrating maintenance systems
- ▶ Advanced laser alignment camera system
- ▶ 24 Month optical system warranty



▶ Three independent imaging cameras with an advanced laser alignment system and self calibrating diagnostics provide an extraordinary level of quality.



The full spectrum of monochrome and color documents can be reproduced with the KIP 7200.

System Configurations



KIP 7200



KIP 7200 Modular System with KIP Color Max

KIP 7200 Color Scan Speed

DPI	Color Scan Speed	
600 x 600	1.4" / sec	7' / min
400 x 400	2.0" / sec	10' / min
300 x 300	2.8" / sec	14' / min
200 x 200	3.4" / sec	17' / min

KIP 7200 Mono Scan Speed

DPI	Monochrome Scan Speed	
600 x 600	3.2" / sec	16' / min
400 x 400	4.8" / sec	24' / min
300 x 300	6.4" / sec	32' / min
200 x 200	9.6" / sec	48' / min



KIP COLOR MAX IMAGING FEATURES

▶ Custom Quality Filters

▶ Image Editor

▶ Image Deskew

▶ Image Despeckle

▶ Image Nesting

▶ Area Crop

▶ Wipeout / Mask

▶ Multiple Inkjets

▶ Color Management

▶ Print to Inkjet (RIP)

▶ Print Collated Color Sets

▶ Scan to E-mail

▶ Paneling

▶ Spectrophotometer Support

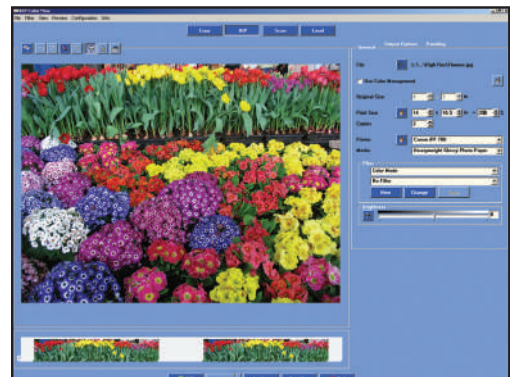
▶ KIP Color Max provides advanced copying, scanning and printing of all monochrome and color documents.

Monochrome Imaging

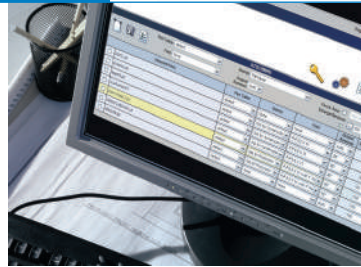
- Monochrome scan speeds up to 9.6" per second!
- Stream-feed an unlimited number of originals when producing collated sets
- Create single or multi page digital files; including PDF and DWF
- Preset quality selections for line, grayscale and photo originals
- Advanced KIP imaging technologies deliver superior results

Color Imaging

- Color scan speeds up to 3.4" per second!
- High resolution, 24-Bit color image quality
- Copy directly to inkjet printers or create color digital files
- Easy system calibration process ensures color copy and scan accuracy
- Increase system functionality with KIP Color Max software



KIP 7000 SERIES: network and web based printing



KIP PrintNET. KIP PrintNET is a true web-based utility designed to streamline KIP wide format document production across wide-area printing environments. KIP PrintNET delivers versatile viewing, printing, job queue management and system administration features via the server without the need to install specialized applications on network PCs.

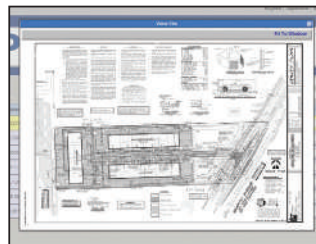
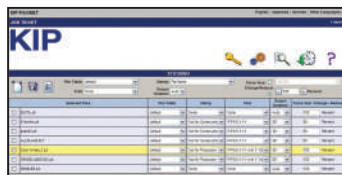
What You See Is What You Print. The integrated, cross-platform PrintNET viewer is operating system independent, quickly displaying images in crisp grayscale for accurate representation of graphics, photos and fine lines. Integrated image viewing provides instant file authentication and an accurate representation of the final printed product with custom image settings.

Account For Everything. KIP PrintNET generates customizable reports detailing all system usage at preset intervals or on demand at any time. These reports contain data compatible with spreadsheet applications for easy customization and analysis.

System Information Delivered To You. Advanced diagnostic systems eliminate potential print delays by providing designated operators with system status alerts via email or text messaging if paper or toner replenishment is needed.

PRINTNET KEY FEATURES

- ▶ The integrated PrintNET viewer displays accurate graphics, photos and fine lines
- ▶ Create print jobs from Windows, Apple, Novell and Unix/Linux based web browsers
- ▶ User name and password authentication system designed for maximum network security
- ▶ Apply printing preferences on a per-file basis or to a complete print job
- ▶ Accurate individual, departmental and project specific accounting information
- ▶ Operates in mixed environments of client PC operating systems

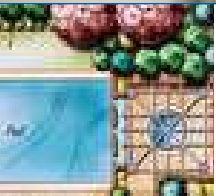


Use KIP PrintNET to print and manage all jobs via the internet

View all files before printing with KIP PrintNET

KIP Windows Driver Features

- Intelligent, 2-way communication with KIP 7200 system
- Displays current media information and real time system status
- Print in monochrome and grayscale
- 100, 200, 400 and 600 dpi selection
- Selection of folding parameters
- 64-Bit operating system compatibility
- 1- 999 copies or collated sets
- Label documents with user name, job number and data tracking information
- Job accounting and data tracking includes user name, job number and data tracking information
- Print from design, project management and markup applications



KIP AutoCAD Driver Features

- ADI and HDI drivers for AutoCAD
- Displays current media information and real time system status
- Raster image control to adjust gamma and density levels for embedded raster data
- Data tracking for job accounting including user name, job number, and description fields
- User and job number passwords may be required before printing
- Select bond, vellum, film or custom media
- Image stamping allows placement of text and/or stored images anywhere on the document



Integrated DWF printing



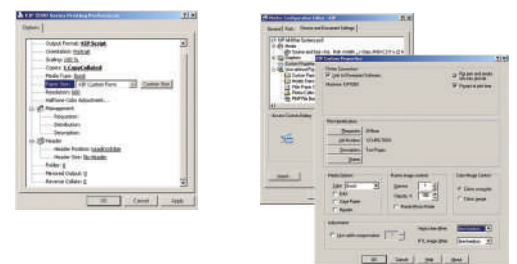
KIP Request. KIP Request network printing software is an easy to use printing application designed to provide network users with a fast and accurate means of producing high quality prints from all types of file formats. Every aspect of KIP Request is centered on efficient workflow, providing complete command of a host of powerful printing and print management features. Users may preview print jobs, make image adjustments, set document folding parameters, enter accounting data, manage the print queue and send files to various KIP printers on the network via a single interface.

REQUEST KEY FEATURES

- ▶ Automatic file format detection
- ▶ Standard raster and vector file format support
- ▶ Integrated image viewer
- ▶ User name and password security system
- ▶ Powerful print tracking and job accounting tools
- ▶ Fast file processing for maximum productivity
- ▶ Individual print rotation within a collated set
- ▶ Advanced folding features



KIP Request user interface



Windows and AutoCAD drivers

KIP 7000 SERIES: system operations

KIP IPS. The KIP Image Processing System is a combination of processing power and flexible software applications designed for maximum productivity and ease-of- use. Applications are available on PC workstations, over the internet and at the KIP 7000 touch screen operator panel, providing a uniform user interface across the entire KIP digital product range. All applications have been designed to provide exceptional versatility, fast file processing and efficient use of network resources to maintain high productivity.

Automated Metering System. All KIP printing, copying, and scanning applications are connected via an integrated system designed to record and account the use of all system functions. Customizable reports detailing total system usage are delivered via E-mail on demand or at designated intervals.

Easy Administration. In addition to the thoughtfully designed interface, users and administrators benefit from an array of sophisticated, easy-to-use queue management and accounting tools designed to meet today's most challenging network security demands. Information Center. The KIP 7000 is configured to display contact information specific to the KIP authorized service provider. This feature is designed to assist operators when requesting consumables, service calls and system.

System Guides. The KIP 7000 operator panel displays illustrated guides to explain system operations including mono/color copy and scan-to-file functions. In addition, step-by-step media and toner replacement procedures are automatically displayed when necessary to provide users with system instructions. The KIP System Guide is available at the KIP 7000 operator panel and downloadable via KIP PrintNET to assist operators by providing a quick reference resource for all KIP application features.

System Upgrades. Each configuration may be easily field upgraded to provide new system features at any time, including mono/color scan-to-file and copy.



KIP 7000 Series touch screen interface



KIP 7000 Series touch screen interface



Instant keycode
upgrades



Easy to understand
illustrated operator guides



KIPFold 7000. The KIPFold 7000 system automates document finishing requirements by providing folding, stacking and collation in a compact design. The system intelligently communicates with the KIP 7000 IPS and is fully integrated with all KIP copying and printing applications and drivers to provide seamless workflow integration.

KIPFold 7000 Packet Standards

Architectural Print Sizes: 12" x 18", 18" x 24", 24" x 36", 36" x 48", 30" x 42"

Engineering Print Sizes: 11" x 17", 17" x 22", 22" x 34", 34" x 44"

Metric Print Sizes: A3 - A0

Folded Packet Sizes: 8.5" x 11", 9" x 12" or 210 mm x 297 mm

Margin: 0" - 2", 0 - 50 mm user selectable

Packet Orientation: Portrait or Landscape (Arch., Eng.) Portrait (Metric)

Fold Types

The KIPFold 7000 provides the flexibility to fold copies and prints into all architectural, engineering and metric standard packet sizes. Prints are accepted in either landscape or portrait format, allowing for fast and efficient folding operations. In addition, users may specify individual packet orientation - landscape or portrait.

KIP Stacking Solutions

Consistent, accurate and reliable KIP stackers deliver maximum document control with minimum effort. From simple print catchers to intelligent online stacking systems, KIP solutions can be easily tailored to suit your exact needs, while maintaining the flexibility to grow as demands increase.



**Easy to understand
illustrated operator guides**

KIP 7000 SERIES: system configurations

Engineered for Sustainability. KIP is committed to product designs that promote environmental health and sustainability. Our goal is to consistently improve and refine the technologies in KIP products that keep our planet green.

KIP PRINTERS AND SYSTEMS FEATURE THESE EARTH CONSCIENTIOUS ASPECTS

- ▶ Energy Star Qualified
- ▶ ROHS Compliancy
- ▶ ISO 14001 Standards
- ▶ Ozone Emissions Filters
- ▶ UL/UL-C Approved
- ▶ 100% Toner Efficiency—No Waste Toner
- ▶ Organic, Recyclable Photoreceptors
- ▶ Recyclable Toner Containers
- ▶ Prints on Recycled Paper
- ▶ Automatic Image Rotation and Media Selection Ensure Minimal Paper Waste



©2008 KONICA MINOLTA BUSINESS SOLUTIONS U.S.A., INC. All rights reserved. Reproduction in whole or in part without written permission is prohibited. Konica Minolta is a trademark of KONICA MINOLTA HOLDINGS, INC. The essentials of imaging is a registered trademark of KONICA MINOLTA HOLDINGS, INC. All other brands and product names are registered trademarks or trademarks of their respective owners. KIP and KIP 7000 are registered trademarks of KIP.

Design & specifications are subject to change without notice.



KONICA MINOLTA

KONICA MINOLTA
BUSINESS SOLUTIONS U.S.A., INC.
100 Williams Drive
Ramsey, NJ 07446
www.kmbs.konicaminolta.us

KIP 7000 PRINT SYSTEM

	Standard	Optional
Mono Printing	•	
PDF Printing		•
Folding		•

KIP 7000 PRINT & COPY SYSTEM

	Standard	Optional
Mono Printing	•	
Mono Copy	•	
PDF Printing		•
Folding		•

KIP 7000 PRINT, COPY & SCAN SYSTEM

	Standard	Optional
Mono Printing	•	
Mono Copy	•	
Mono Scan	•	
Color Copy		•
Color Scan		•
PDF Printing		•
Folding		•

KIP 7200 MONOCHROME PRINT, COPY & SCAN SYSTEM

	Standard	Optional
Mono Printing	•	
Mono Copy	•	
Mono Scan	•	
Color Copy & Scan		•
PDF Printing		•
Folding		•
KIP Color MAX		•

KIP 7200 MONO/COLOR PRINT, COPY & SCAN SYSTEM

	Standard	Optional
Mono Printing	•	
Mono Copy	•	
Mono Scan	•	
Color Copy & Scan	•	
PDF Printing		•
Folding		•
KIP Color MAX		•