



KONICA MINOLTA

bizhub 
C350

Find your power center.



Full Color Printer/Copier/Scanner. It's the hub of your business. Where color joins B&W. Print merges with data. Content is scanned, shared, applied, secured. And it's all managed from a single, central document resource. Every business needs a power center. Yours is here.



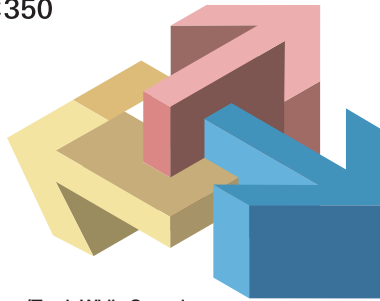
The essentials of imaging

bizhub
C350

Network
Digitize Documents
Color Print Controller
Scan-to-Email/FTP/Disk
Addressing (LDAP)

Manage

PageScope
Box Function
Copy Track
Security Functions/Track While Scanning



Finish

Finishing Options
Superior Color Quality
11" x 17" Full-Bleed Output
Multi-Page Enlargement

How bizhub can change your workflow.

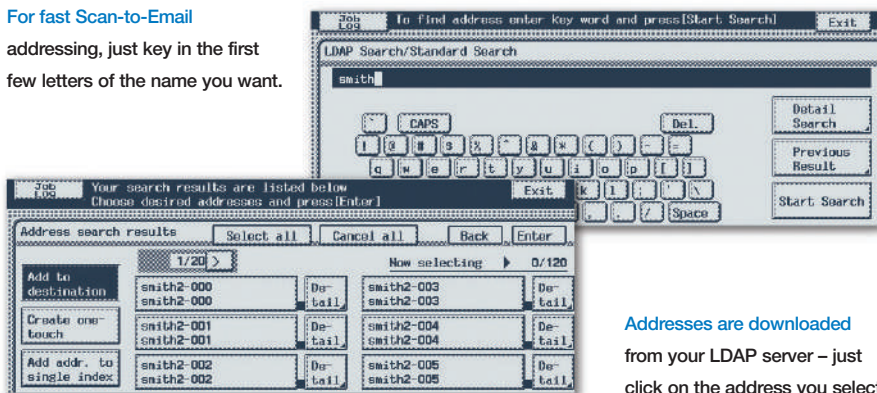
A new concept in document-handling efficiency, not restricted by time or space. A central hub that puts every user at the power center of productivity – connecting, scanning, sharing information seamlessly, with greater flexibility and enhanced security. That's the bizhub concept. And it creates strong new links between your information resources and your business goals.

It's the hub of your business.

The Konica Minolta bizhub C350 is a central resource to manage your information flow. To maintain your speed and productivity in black-and-white. To add the impact of color when you need it. To bring color and B&W originals into your workflow faster. And to increase your functionality and flexibility, right out of the box.

For fast Scan-to-Email

addressing, just key in the first few letters of the name you want.



Addresses are downloaded from your LDAP server – just click on the address you select.

Who benefits from the power of bizhub?

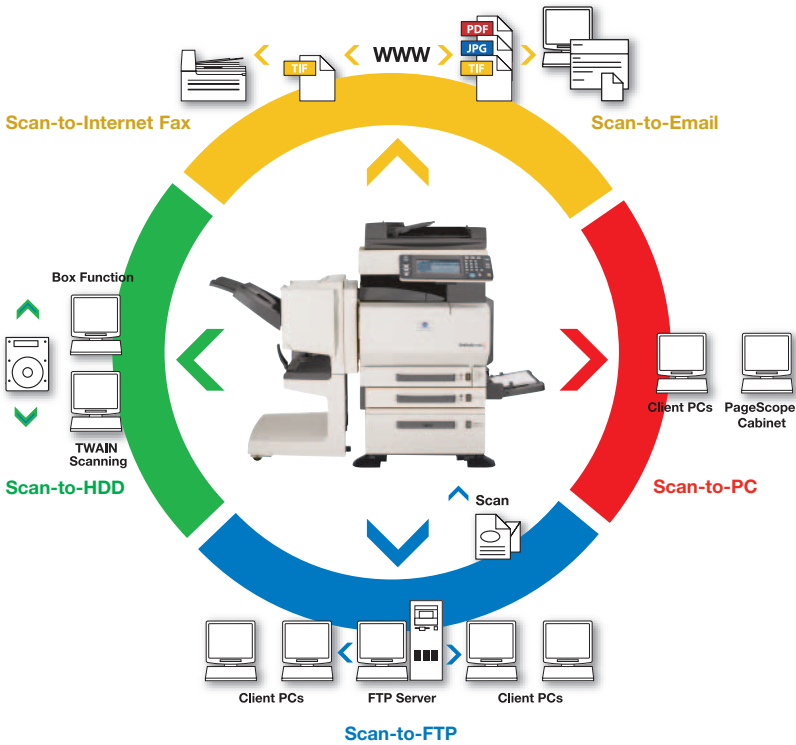
Any workgroup environment with high-volume to medium-volume document traffic. Any business or professional office where data must be shared widely and cost-efficiently. Any service provider in finance, education, healthcare, law or other competitive field. Any retail or manufacturing center where color and B&W printing needs are growing – and budgets are tight.

PageScope networking and device control.

You also have access to a powerful range of PageScope software solutions developed by Konica Minolta. Together with the bizhub C350, they provide networked remote device control. Along with personal document management that includes OCR, image enhancements, PDF creation, file format conversion and much more. As well as powerful document distribution capabilities. At the hub of your business, you'll get networking power that stand-alone systems can't match.

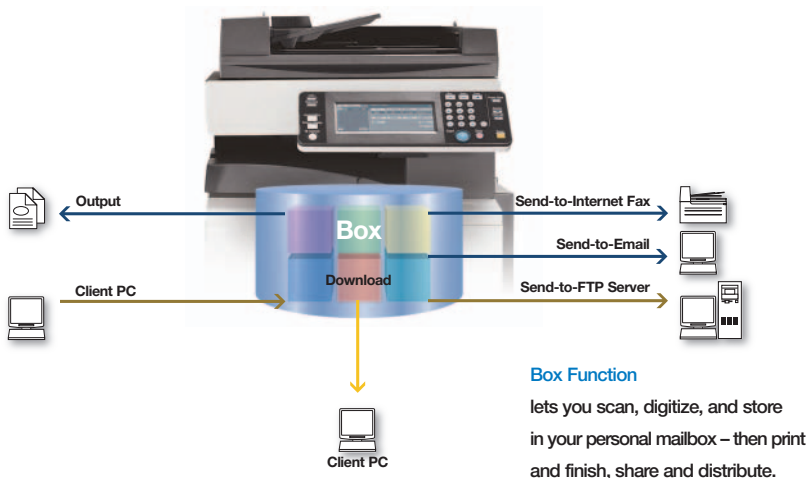
Scan and send

in color and B&W to locations within your office or anywhere on your network – even to Internet addresses.



Save steps by scanning direct to Email.

A document comes in. Copies get made. Pages get lost. But with Scan-to-Email capability, you can attach files to Email messages for transmission to one or more Email addresses. You'll be able to add subject titles to Scan-to-Email files. You'll also have optional IP transmission capability, for scanning or faxing documents directly to a folder on your PC.



Better ways to save and store your information.

With the bizhub C350, you can scan both color and B&W originals more quickly – turning hard copy into digital data that can be edited, updated and distributed more easily. Why search for paper files in paper folders? Scan them to your server or optional hard disk drive and store them in as many as 200 individual mailboxes with Box Function. Then download any project-related information via Web browser or TWAIN-compliant applications. And output information however your workflow demands: as color or B&W prints, copies, or electronic files.

Maintain security throughout your network.

Because scanning can raise security issues, bizhub C350 gives you special safeguards. Data is encrypted during network transmission, so your data is protected even as it moves swiftly through your network. After a job is printed, Job Erase automatically deletes job data from copier memory. And when your hard disk drive is reformatted, Random Erase insures that deleted information can't be restored. It all adds up to peace of mind – and 100% compliance with ISO-15408 when bizhub C350 is used with standard print controller.*

Manage and update all your addresses.

For large organizations, updating Email addresses can be a complex chore. Konica Minolta makes it easy, with LDAP capability that lets you exchange and update address book information from one bizhub C350 to another – even download addresses from an LDAP-compliant Email server. So document distribution via Scan-to-Email is easy and addresses are constantly up-to-date.

A proven record of satisfaction.

With the bizhub C350, you enjoy one more key benefit: reliability you can count on, from a world leader in imaging technology. The new Konica Minolta has an unsurpassed reputation for customer satisfaction, proven over decades of solid growth – and we're determined to earn your continued trust with every bizhub C350 we deliver.

* When configured with the optional IC-401 Image Controller, the bizhub C350 is no longer compliant.

One bizhub can make all the difference.

It's a powerful idea in any workplace: "right sizing" that lets you consolidate your copying, printing, scanning and finishing functions in a single cost-saving device. Konica Minolta takes this idea one step further, by integrating color and B&W output capabilities – at not much more than the cost of your current B&W printer/copier. Whether you need one bizhub C350 or a bizhub array deployed throughout your organization, you'll have greater efficiency, increased uptime and maximum networking power.

All the color you may ever need.



The bizhub C350 has its own built-in color print controller – powerful enough for most of your everyday business color needs. To add color impact to reports, presentations, human resource documents and a wide range of corporate and general business documents, you'll have high-quality full-color printing.

Fast, cost-efficient B&W output.

Your bizhub C350 is also a workhorse black-and-white printer/copier, with output of up to 35 ppm. That means it's ideally positioned at the hub of all your document traffic. In fact, the bizhub C350 is a cost-effective digital replacement for your current B&W printer/copier – but it's better, because it gives you color when you need it.

It's right for your workflow.

Not too big. Not too small. Your bizhub C350 is just the right size. To speed your work. Increase your flexibility. And put color into your communications. Its built-in color capabilities are powerful enough to handle all your daily business printing needs. Its image quality gives every color and B&W document more impact. And its cost-efficiency looks great on your bottom line.

Clean Toner Replacement

With easy access, you can change toner bottles quickly and cleanly.

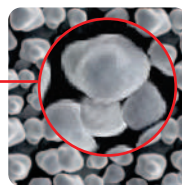


Easy access maintenance.

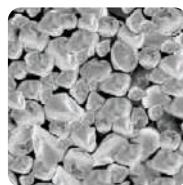
Not only can bizhub speed your workflow – it's also designed to maximize your uptime. Changing toner is simple and clean, because toner bottles are easily accessible. You can also clear misfeeds quickly by opening the side of the bizhub C350 for fast access to the paper path.

Simitri® Color Polymerized Toner

Ultra-fine particles improve detail and definition – giving your prints and copies sharper text, crisper images, improved halftones.



Simitri®



Pulverized

Quality to improve your image.

Quality to improve your image. With the new imaging system of the bizhub C350, your business communications will look better than ever. Simitri® Color Polymerized Toner uses toner particles of smaller size and more consistent shape to provide more uniform output, improved dot and line reproduction, and better halftone definition. Fine Edge Enhancement Technology boosts edge resolution to give you smoother text and fine lines. Advanced color conversion corrects each color independently, so copy quality is true to each original. And Tag BIT technology helps improve the readability of light-colored text.

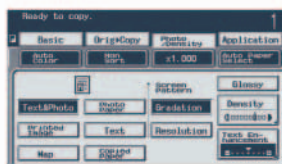


A panel that puts you in control.

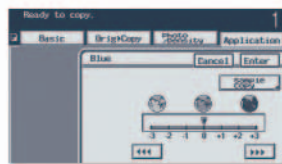
The bizhub C350 is designed to make work simple. It starts with a 3-position tilting control panel that adjusts to any angle – even wheelchair access. There are large function buttons, so you won't hit the wrong keys by mistake. The touch-screen LCD panel is bigger and brighter, so it's easy to operate even in standard office lighting. Menus are intuitive and user-friendly, so first-time users can be fully productive right from the start.



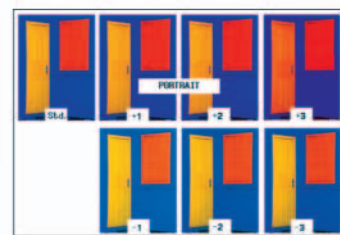
Color Adjustments:
Adjust parameters individually for best results.



Color Copy Modes:
Fine-tune quality with Text, Text/Photo, or Photo mode.



Sample Copy Mode:
Print seven versions on a single test sheet to save time and money on paper and toner.





More paper, more productivity.

Not only does the bizhub C350 give you fast output of 22 ppm in color, 35 ppm in B&W – it also lets you work longer without re-loading paper. Add the PC-401 Paper Feed Cabinet, and your maximum paper loading capacity increases to 3,400 sheets – enough for the longest print/copy runs. The 250-sheet multi-purpose cassette and 150-sheet manual bypass accept paper stocks from 16 lb. bond to 140 lb. index, accommodating covers, envelopes, OHP transparencies and labels.

It's loaded with features.

Your bizhub C350 is fully loaded. With features and functions to speed your work, increase your productivity, enhance your flexibility. With advantages to simplify operation. With design and performance to maximize uptime. With options to help your business grow.



Advanced Sorting



Multi-Position Stapling



Hole-Punching



Booklet Creation



Auto Duplexing



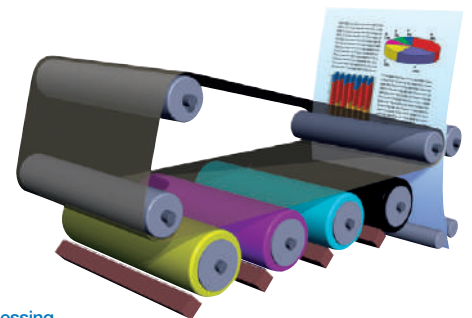
12"x18" Full-Bleed

Finishing power for on-demand printing.

Along with fast, cost-efficient color, your bizhub C350 provides powerful document finishing options. Why struggle with tedious, time-consuming hand-finishing? You can sort, staple, fold, hole-punch – even produce finished booklets that are center-folded and saddle-stitched. From a single hub, you'll have central document delivery in both color and B&W. And you can add options as your business grows.

It's like having your own in-house print shop.

Sending your work to a print shop takes time, costs money – and loses control of sensitive information. With the bizhub C350, you can do more in-house. You can reprint when needed. Revise documents more easily. And eliminate costly overruns or obsolete printed inventories that have to be tossed out.



Tandem Processing

All four colors are applied in a single pass, increasing color print/copy speed to 22 ppm.



① **Reversing Automatic Document Feeder**
DF-601 with 100-sheet capacity and smooth, quiet operation.

② **New Tilting Control Panel**
Improved access from any angle – and a bigger, brighter LCD touch-screen.

③ **Larger Function Keys**
Larger size and contrasting color tone make buttons easier to use.

④ **Automatic Duplexing**
AD-501 outputs 2-sided copies and prints for bizhub productivity.

⑤ **Manual Bypass**
150-sheet capacity, in paper weights from 16 lb. bond to 140 lb. index.

⑥ **Multi-Purpose Tray**
Holds up to 250 sheets in paper weights from 16 lb. bond to 140 lb. index.

⑦ **Universal Cassette**
Holds up to 500 sheets, in weights from 16 lb. to 24 lb. bond.

⑧ **Paper Feed Cabinets**
Optional PC-101 (one 500-sheet drawer), PC-201 (two 500-sheet drawers).

⑨ **Booklet Finisher**
FS-601 center-folds and saddle-stitches completed booklets.

○ **Built-In Color Print Controller**
All the power you need for most business documents.

○ **Hard Disk Drive**
HD-501 lets you scan documents to HDD, save in individual mailboxes.

○ **Punch Kit**
PK-501 hole-punches finished documents in 2-hole or 3-hole (for FS-601 only).

○ **Staple Finisher**
FS-501 allows you to sort, group, multi-position staple your color and B&W documents.

○ **Paper Feed Cabinet**
PC-401 paper feed cabinet raises your maximum paper capacity to 3,400 sheets.

○ **Job Separator Tray**
JS-601 lets you separate prints and copies for easy retrieval (for FS-501 only).

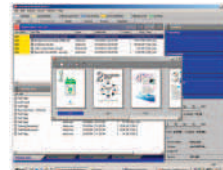
○ = Not shown



Color control with professional power.

With its own built-in print controller, your bizhub C350 is a color powerhouse. But your power takes an exponential leap when you add the optional IC-401 Image Controller. It increases your color management capabilities, expands your color scanning flexibility, and provides an extraordinary array of professional color production tools. From oversized production proofs on 12" x 18" paper to postcard-sized direct-mail flyers, the bizhub C350 can do it all.

Speed your color print production.



The IC-401 Image Controller turns your bizhub C350 into a fast, comprehensive color production system. Fiere® DocBuilder® lets you preview, edit and assemble documents

more quickly. RIP-While-Print® and Continuous Print™ capabilities keep your output moving so professional-quality color won't compromise your productivity.

It's a total color professional.

Your business color needs are growing. Or they're growing more professional. So you need more color power. Your bizhub C350 has the solution: a powerful IC-401 Image Controller. With advanced Fiere® color management control and document production capabilities. For results any professional will envy.

Networking and web-based print management.

Fiere® NetWise® architecture provides seamless connectivity on all popular networks with automatic IP configuration and peer-to-peer support. Fiere® WebTools™ help you manage jobs more quickly and simply from any Java-enabled web browser.

Even greater command and control.



With the Fiere® Command Workstation™ 4.1 interface, you'll have fast point-and-click document print control with power and security. You can manage job functions from

remote PCs, preview thumbnails and full-screen color images, maintain and update archives, create job logs and more – with convenient customizing to suit your individual preferences.

Advanced options to match color needs.

With the IC-401 Image Controller, you can manage, control, and output color to exacting professional standards. But EFI options allow you to go further. EFI Color Profiler Kit helps you match any color using a simple hand-held spectrometer that measures precise color value. And EFI's Graphic Arts options provide extra graphic functionality.



Multi-Page Enlargements:

Create your own color posters and signage via copy mode.



Full-Bleed Output:
Preserve color bars
and crop marks on
paper up to 12" x 18"
with 11" x 17" full
bleed printing.

Postcard Mode:
Output vivid
color images for
direct-mail use.



Display Devices:
All MIB-compliant devices are shown on a single screen.



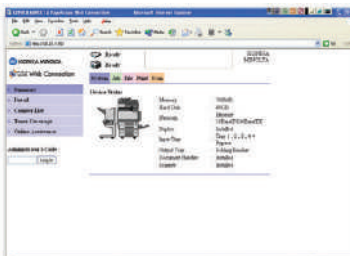
Manage multiple bizhub devices on your network.

For networked applications where departments and workgroups have multiple bizhub C350's, PageScope Net Care lets system administrators manage them all from a single point. All MIB-compliant printers and peripherals are listed in one on-screen dialogue box. Setup and management is easier. Automatic device Email notification enables you to respond more quickly to device inquiries. You can download total print, copy and scan data directly to your PC. And a familiar Java or HTML interface gives you a visually friendly format that makes it all easy.

It's a total management solution.

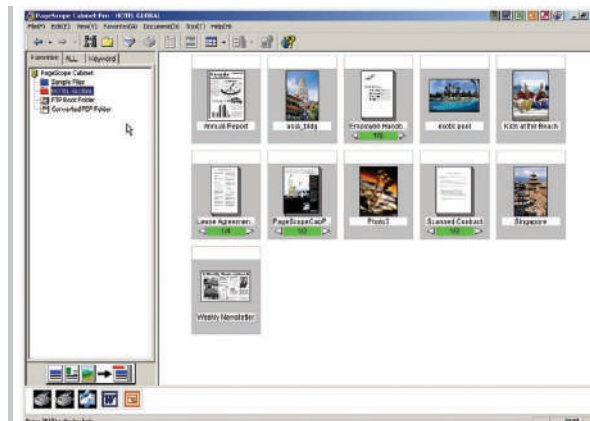
The Konica Minolta bizhub C350 is your network power center. It also powers up your network, through access to a superior suite of PageScope software applications. For setup and status check. Personal document management. Advanced routing. And much, much more. To save time, speed output and keep your information flowing.

Check Status:
Review status and settings for each bizhub device.



Monitor bizhub status, configure settings.

Built into every bizhub C350, PageScope Web Connection lets you monitor device status using your standard web browser. You can display detailed information. Adjust print and paper settings. View total meter counts. And choose addresses for scanned data. So you don't have to leave your desk for bizhub productivity.



Your personal document management resource.

Powerful PageScope Cabinet Pro software gives you fast, flexible access to scanned documents. No more lost or misplaced paper files – documents can be scanned, combined with files created electronically, and accessed anywhere, anytime, so all relevant information is instantly available. Thumbnail previews, OCR, full-text search, file conversion, image enhancement, drag-and-drop workflow – they're all at your fingertips.

View Thumbnails:
See document contents before you open files.





Set up a system right from your desktop.

Why configure control settings on every control panel? PageScope Network Setup detects and lists each bizhub C350 device through links to PageScope Web Connection. A simple Windows application gives you point-and-click control – and through TCP/IP or IPX/SPX protocols, devices can be set up, checked and controlled together.

Integrate bizhub with enterprise environments.

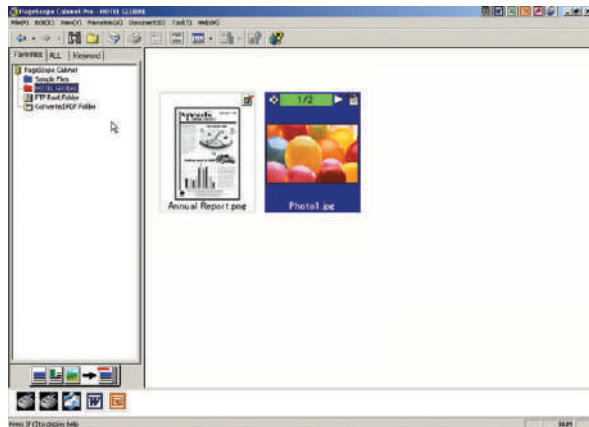
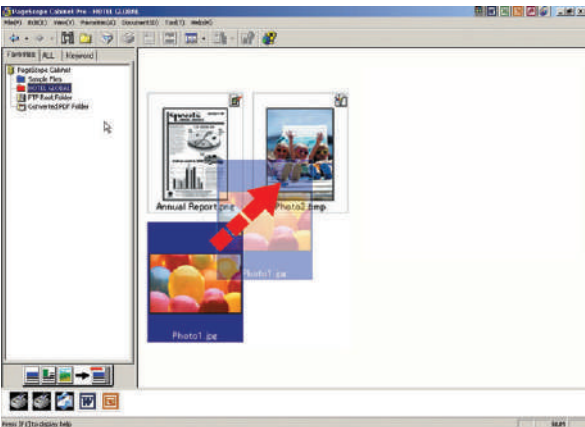
For seamless productivity, PageScope EMS Plug-Ins and PageScope NDPS Gateway build bridges to your existing network environment: Enterprise or Novell Distributed Print Services. EMS environments can automatically detect Konica Minolta multifunctional devices located anywhere on your network. And you can check printer and print job status via NDPS, save time during periods of peak document traffic.

Keep your address book up to date.

With PageScope Address Book Utility (ABU), you can manage all your Email addresses quickly and easily – exchanging and updating address-book information from an LDAP-compliant Email server.

Scan and distribute in one simple step.

With PageScope Router, you can automatically scan and send files from the bizhub C350 to any destination. Every network user has immediate access to all the information they need. And you can adjust image quality, convert file formats on the fly, even take advantage of automatic archiving so necessary documents and paper trails are preserved.



Group Files:

Related documents and text, graphic files can be grouped together.



bizhub C350

General Specifications

TYPE:
Full-Color Printer/Copier/Scanner
With Stationary Platen

PRINT/COPY PROCESS:
Tandem Process

IMAGING SYSTEM:
New Imaging System for Sharper
Text, Refined Color
Fine Edge Enhancement
Technology (FEET)
Multiple Exposure Tone System™
(METS)
SimiTri® Color Polymerized Toner
Tag BIT Technology

PRINT/COPY SPEED:
Full Color: 22 ppm (letter, portrait)
B & W: 35 ppm (letter, portrait)

PRINT/COPY RESOLUTION:
600 x 600 dpi
600 x 1800 dpi (enhanced resolution)

GRADATION:
256 color shades per pixel

ORIGINAL SIZE:
Up to 11" x 17" (scanning/copying)
Up to 11" x 17" full-bleed on
12" x 18" paper (printing)

COPY SIZE:
Multi-Purpose Cassette: 4" x 6" to
12" x 18"
Universal Cassette: 5-1/2" x 8-1/2"
to 11" x 17"
Multiple Bypass: 4" x 6" to 12" x 18"

WARM-UP TIME:
Less than 99 seconds

FIRST COPY:
Full color: less than 12.8 seconds
(letter)
B & W: less than 6.8 seconds (letter)

COPY QUANTITY:
1 - 999

MAGNIFICATION:
Zoom range: 25% - 400%,
0.1% increments
Preset reduction: 79%, 73%,
65%, 50%,
Preset enlargement: 121%,
129%, 155%, 200%

COLOR MODES:
Auto Color Mode
Full Color Mode
Black & White Mode
2-Color Mode
(Standard Controller only)

EXPOSURE MODES:
Text Mode (legible text)
Text/Photo Mode
(clear text and halftones)
Photo Image Mode
(optimized for gradations)
Printed Image Mode
Copied Image Mode
Map Mode
(fine edges and legible text)
Dot Matrix Mode

PAPER SUPPLY:
250-sheet multi-purpose cassette
(16 lb. bond to 140 lb. index)
500-sheet universal cassette
(16 lb. to 24 lb. bond)
150-sheet intelligent bypass
(16 lb. bond to 140 lb. index)

MAXIMUM PAPER CAPACITY:
3,400 sheets (total, with options)

POWER REQUIREMENTS:
120 V, 60 Hz

POWER CONSUMPTION:
Less than 1.5 Kw

DIMENSIONS (W x D x H):
35-1/2" x 28-3/4" x 30-1/4"
(standard configuration)

WEIGHT:
220 lbs. 4 oz.

OPTIONS:
DF-601 Reversing Automatic
Document Feeder
AD-501 Automatic Duplex Unit
PC-101 Paper Feed Cabinet
(500 sheets)
PC-201 Paper Feed Cabinet
(500 sheets x 2)
PC-401 Paper Feed Cabinet
(2,500 sheets)
FS-601 Booklet Finisher
PK-501 Punch Kit (for FS-601
Booklet Finisher)
FS-501 Staple Finisher
IC-401 Image Controller (EFI)
VI-501 Video Interface Kit
(for IC-401)
HD-501 Hard Disk Drive
OC-501 Original Cover
JS-601 Job Separator
EK-501 Parallel I/F Kit
MC-501 Mechanical Counter
VK-501 Copy Vendor Kit
Key Counter Kit
DK-501 Desk Storage Drawer

PAGESCOPE APPLICATIONS:
Network & Device Management
PageScope Web Connection
PageScope Net Care
PageScope Network Setup
PageScope EMS Plug-Ins
PageScope NDPS Gateway
PageScope Address Book
Utility (ABU)
Document Workflow Management
PageScope Cabinet Pro
PageScope Router (optional)

Available Functions*

APS/AMS
Auto Duplex
Auto Tray Switching
Bi-Directional Driver (IC-401
Image Controller only)
Book Copy
Booklet Creation with Folding
& Stapling
Booklet Pagination
Box Function
(Standard Controller only)
Color Calibration (IC-401 Image
Controller only)
Color Modes & Functions:
Color AE (Automatic Exposure)
Auto Color, Full Color, Black
& White and Mono Color
Mode, 2-Color Mode
Color Separation

Available Functions Continued*

Color Test Mode: Saturation,
Brightness, Sharpness,
Contrast, Skin Color, Red,
Blue, Green, Color Balance,
Hue, Copy Density
Copy 1 Set
Copy Track (1,000 accounts)
Cover Mode
Criss-cross Sorting
Distribution Number Printing
Energy Save Mode
Enlarge Display
Erase Mode (border, frame, edge)
Glossy Mode
Hole Punching (2-hole, 3-hole)
Image Centering
Image Repeat
Interrupt
Job Accounting
Job List
Job Log
Job Memory
LDAP
Memory Recall
Mirror Image
Mixed Media Support (IC-401
Image Controller only)
Multi-Page Enlargement
OHP Interleaving
Postcard Mode
RIP-While-Print™ (IC-401 Image
Controller only)
RIP Once/Print Many (IC-401
Image Controller only)
Scanning:
Scan-to-Email
Scan-to-FTP
Scan-to-HDD
Scan-to-Mailbox
URL Notification
Internet Faxing
Fiery® Remote Scan 5
(IC-401 Image Controller only)
TWAIN Drivers for Windows
98, ME, NT 4.0, 2000, XP
Secure Printing
Separate Scanning (Job Building)
Sleep Mode
Stapling (multi-position)
Storyboarding (2-in-1, 4-in-1)
Text, Photo, Text/Photo Modes
Tray Select (1st page)
User Authentication (Standard
Controller only)
Watermarks
XY Zoom
Zoom

Internal Print Controller (standard)

PROCESSOR: 350 MHz
HARD DISK DRIVE:
40 GB (optional)
MEMORY: 256 MB (standard)
PAGE DESCRIPTION LANGUAGE:
PCL 5c
FONTS:
Resident Fonts: 45, plus 1 Bitmap
PRINT DRIVERS:
Windows 98, ME, NT 4.0, 2000,
XP

Internal Print Controller (standard) Continued

INTERFACE:
Ethernet 10/100 BaseT
Parallel IEEE 1284 (optional)
PROTOCOLS:
TCP/IP, LPR, SMB, LPD, Netware
(4.x, 5, 6), Pserver, N Printer,
NDPS, IPP 1.1, SMTP, POP3,
LDAP, SSL HTTP 1.1, SNMP

UTILITY: Box Utility Software

SECURITY:
ISO-15408 compliant

IC-401 Embedded Print Controller (optional)

PROCESSOR:
Intel® Pentium® III 700 MHz
OPERATING SYSTEM: Linux

HARD DISK DRIVE:
10 GB

MEMORY:
128 MB (standard); 256 MB
(maximum)

PAGE DESCRIPTION LANGUAGE:
PCL 6, Adobe PostScript 3

FONTS:
PostScript Fonts: 136
PCL Fonts: 45

PRINT DRIVERS:
Windows 98, ME, NT 4.0, 2000, XP
Mac OS 8.6, 9.x
Mac OS X (classic mode only)
Mac OS 10.2.4 and above
(native mode)

INTERFACE:
Parallel IEEE 1284
10/100 BaseT
RJ45

PROTOCOLS:
TCP/IP (Static IP, Auto IP), LPR
SMB, IPX/SPX (NDS),
AppleTalk (EtherTalk), HTTP,
SNMP, IPP, Port 9100,
Netware (4.x, 5.x), NDPS
Gateway in Netware 5.0,
SMTP, POP3/IMAP4, LDAP

UTILITIES:
ColorWise® Pro Tools 3.0
Command Workstation™ 4.1
(for Windows)
Command Workstation™ LE
(for Mac OS 10.2.4 and later)
Fiery® Downloader™
Fiery® Job Merge/Edit
Fiery® Spooler™
Fiery® WebTools™

OPTIONS:
128 MB Memory Upgrade (IC-401)
DocBuilder™ Pro
EFI Densitometer (ED-100)
Graphic Arts Options
(Hot Folders, Auto Trapping,
Spot Color)
EFI Color Profiler Kit (ES-1000)
(Spectrophotometer with
monitor profiling software)



© 2004 KONICA MINOLTA BUSINESS SOLUTIONS U.S.A., INC. All rights reserved. Reproduction in whole or in part without written permission is prohibited. Konica Minolta and The essentials of imaging are trademarks of KONICA MINOLTA HOLDINGS, INC. bizhub, Multiple Exposure Tone System, and PageScope are trademarks of KONICA MINOLTA BUSINESS TECHNOLOGIES, INC. SimiTri is a registered trademark of KONICA MINOLTA BUSINESS SOLUTIONS. Fiery, Fiery logo, Fiery Downloader, Fiery Scan, Fiery Spooler are trademarks of EFI. All other brands and product names are registered trademarks or trademarks of their respective owners.

Design & specifications are subject to change without notice.

*Some functions may require options, which may or may not be available at time of launch.

bizhub C350



KONICA MINOLTA
BUSINESS SOLUTIONS U.S.A., INC.
100 Williams Drive
Ramsey, NJ 07446
www.kmb.s.konicaminolta.us

IMC PEX
Your Preferred  KONICA MINOLTA Distributor

Item #: c350bro

Call 1-800-947-2679
for more information.