

KONICA MINOLTA



HIGHER VALUE: bizhub for B&W output with color scanning.



COUNT ON KONICA MINOLTA
bizhub 423/363/283/223



SPEED

that streamlines your document input and output.

IT'S A FACT: YOUR DIGITAL DOCUMENT SOLUTION CAN HELP YOU WORK MORE PRODUCTIVELY. WORKING PROFESSIONALS IN BUSINESSES AND INSTITUTIONS AS WELL AS HEALTHCARE, EDUCATION, LEGAL AND GOVERNMENT APPLICATIONS COUNT ON KONICA MINOLTA FOR SPEED, FLEXIBILITY AND VALUE – AND THE BIZHUB® 423 SERIES RAISES THE BAR IN ALL THREE. WITH SLEEK DESIGN AND SEAMLESS NETWORK INTEGRATION, YOU'LL HAVE PRINT/COPY OUTPUT SPEEDS TO MATCH YOUR WORKLOAD, COLOR SCANNING TO MULTIPLE DESTINATIONS FOR MOVING INFORMATION FASTER, AND BUILT-IN BIZHUB OP ADVANTAGES TO MAKE PRINTING, NETWORKING AND 3RD-PARTY SOFTWARE INTEGRATION EASIER THAN EVER.

B&W cost-efficiency – with value-added color scanning.

The bizhub 423 Series gives you four models to choose from, each with monochrome print/scan output speeds, special features and scalable options that let you customize a right-size solution for your needs. You can select the model that keeps ahead of your traffic: bizhub 423 (42 ppm), bizhub 363 (36 ppm), bizhub 283 (28 ppm) or bizhub 223 (22 ppm).

And all four bizhub models boost your productivity with scanning speed in color and B&W of up to 70 originals per minute (300 dpi), helping you scan, save and share information faster. You can scan documents to Email, FTP server, SMB, even perform TWAIN scanning from PCs. One-touch convenience features like Scan-to-Me and Scan-to-Home get documents into your workflow more easily. You can also scan directly to User Box, with routing functions that let you add multiple destinations, combine and delete pages, change resolution, adjust color output settings. And bizhub Send lets you perform simultaneous scanning, Emailing, faxing and storing.

For on-board storage, high-capacity 250 GB HDD is standard on the bizhub 423 and 363, a value-added option on bizhub 282 and 223. And for effortless networking, you'll have WebDAV (Web-based Distributed Authoring and Versioning) support to manage server files and folders, IPv6 support to assign every networked bizhub device its own IP address, IEEE 802.1X wireless networking with Extensible Authentication Protocol (EAP), and Gigabit Ethernet to reduce traffic demands on your network.



Konica Minolta has a strong commitment towards a sustainable future. We invite you to visit our website to learn more about our environmental initiatives and our exclusive **Clean Planet Program**.
www.countonkonicaminolta.com



bizhub



In action, the large 8.5" color touch-panel display works the same way as our color devices – with large, easy-to-see controls, user-friendly menus, shortcut keys and thumbnail document preview to make operation easy even for first-time users and temporary personnel.



Styling, simplicity and environmental protection.

Just like Konica Minolta's award-winning color MFPs, the bizhub 423 Series is built to help you work more productively – with the same functionality, finishing options and simple operation. Its sleek dark space-saving cabinetry makes a great design statement and puts more document power at the hub of your business. And the unique InfoLine™ display shows you operating status at a glance.

Award-winning MyTab™ printing gives individuals quick access to customized print settings. And wheelchair access with smooth-sliding paper trays provide Section 508 compliance.

Konica Minolta also goes the extra mile to protect the environment – reducing power consumption with energy-saving operation and power-down modes, lowering emissions and minimizing pollutants in manufacturing, and using recycled materials more widely and effectively. Our high-yield toner bottles last longer, to reduce cost of ownership – and our toner recycling program makes returns easy.

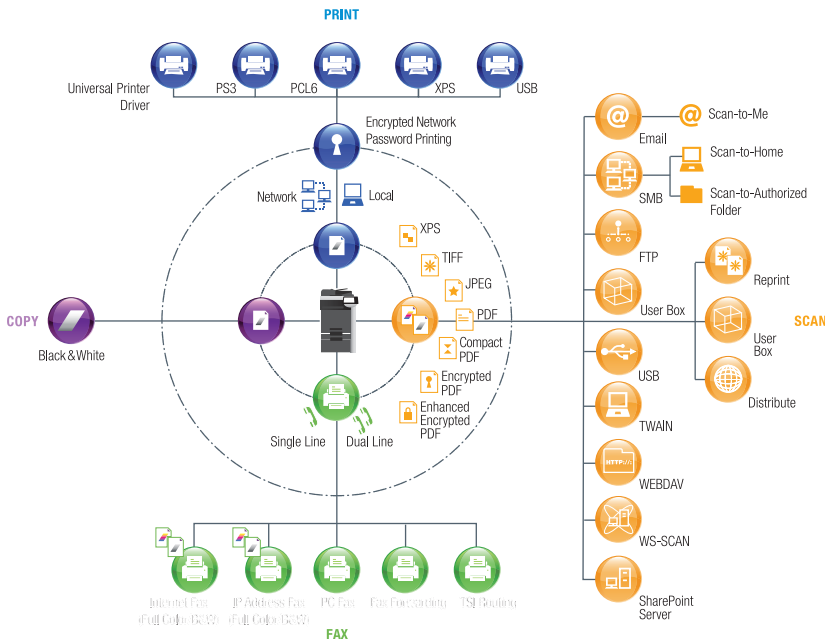
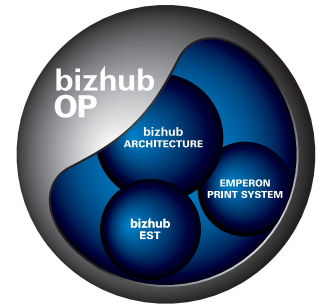
Advantages that only bizhub OP can bring you.

Inside every bizhub Series 423 model, there's the powerful advantage of a unique Konica Minolta technology breakthrough: bizhub OP (Open Platform) design. It's our industry-leading approach to MFP productivity – and it combines three unique benefits.

First, bizhub Architecture: combining multiple functions in integrated circuitry for fast internal data processing, uniform operation across bizhub product lines, and consistent control interface that requires less operator training.

Second, the Emperon® Print System: a powerful, proprietary solution for full print/copy/scan functionality with higher productivity.

Third, our bizhub Extended Solution Technology (bEST): design that enables third-party software to operate seamlessly with MFP functions and controls. You'll have direct integration with cost recovery, print management and other custom software – so the system you create will work the way you do.



POWER

that drives your in-house printing and finishing.

BUSINESS RUNS ON INFORMATION – AND THE MORE REPORTS, PRESENTATIONS, NEWSLETTERS, CORPORATE COMMUNICATIONS AND TRAINING MATERIALS YOU CAN PRINT IN-HOUSE AND ON-DEMAND, THE GREATER YOUR COST-SAVINGS, SECURITY AND PRODUCTIVITY. THE BIZHUB 423 SERIES GIVES YOU RIGHT-SIZE SOLUTIONS FOR A WIDE RANGE OF DOCUMENT REPRODUCTION NEEDS, WITH HIGH-RESOLUTION IMAGE QUALITY THAT MAKES ALL YOUR OUTPUT LOOK MORE PROFESSIONAL. YOU WILL ALSO HAVE A FULL RANGE OF PRINT/COPY FUNCTIONS AND FINISHING OPTIONS TO CUSTOMIZE YOUR SYSTEM – DELIVERING THE DOCUMENTS YOU NEED AT A COST YOU CAN AFFORD.

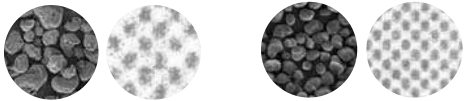
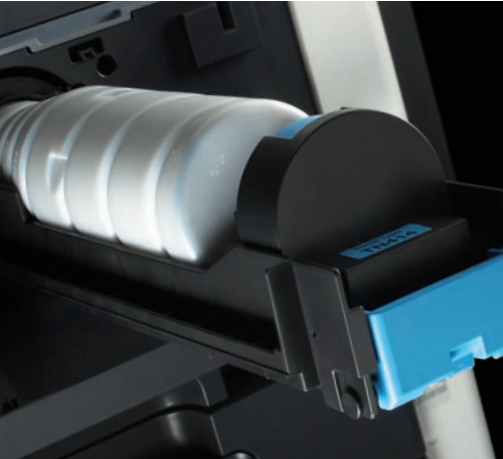


Simitri® HD toner – smaller particles for superior images.

With the bizhub 423 Series, you'll have another industry-leading Konica Minolta advantage: Simitri HD polymerized toner, our unique formulation that uses smaller, more uniform toner particles to reproduce vivid, striking images with improved fine detail, superior halftones and more legible text.

All four models give you 1800 dpi equivalent x 600 dpi print resolution, so even complex graphics, charts, maps, diagrams and small-text passages like product specifications and legal disclaimers will be easier to read. And outline PDF function smoothes the edges of shapes for greater accuracy and legibility.





Pulverized Toner

Simitri HD
High Definition Polymerized Toner

Valuable features for print/copy/scan productivity.

Getting the job done is what bizhub is all about – and every bizhub 423 Series model provides a wide range of print features to handle every printing, copying and scanning need.

Universal Printer Drivers simplify print management by creating a common user interface with standard commands – and auto detection and configuration of network devices, to simplify IT control. The latest Windows drivers, native XPS functionality and PCL6/PS3 emulation fit the needs of any work environment. You can load up to 11" x 17" paper. Internet Fax capabilities are built in. You can also print directly to and from a USB thumb-drive, importing and exporting files via USB memory to/from individual User Boxes.

100% duplex productivity at full rated engine speed lets you make 2-sided prints and copies without slowing down your workflow. A high-capacity reversing auto document feeder is standard on the bizhub 423 and 363, optional on the bizhub 283 and 223. And Proof Copy/Print function lets you check output before making a full print/copy run.

Valuable options for in-house productivity.

The bizhub 423 Series also gives you business all the options – from 2,500-sheet Large Capacity Cassette (PC-409) to raise maximum paper capacity to 3,650 sheets for long print/copy runs, to high-volume Super G3 Fax with dual-line option.

For automatic finishing, you'll have a range of possibilities. An Internal Staple Finisher (FS-529) saves floor space while giving you 50-sheet 3-position stapling and electronic sorting. An external Floor Finisher (FS-527) fits 50-set stapling into a slim high-productivity design, with modular add-on options including Hole-Punch Kit (PK-517) for 2/3-hole punching at side or top, Saddle Kit (SD-509) to create booklets up to 60 pages (15 sheets), and Third Output Tray (JS-603) for sorting prints, copies and faxes more effectively.

So choose the model with output speed your workflow demands. Add the paper, fax and finishing options your document traffic requires. And discover the value that bizhub 423 Series can bring to your business.

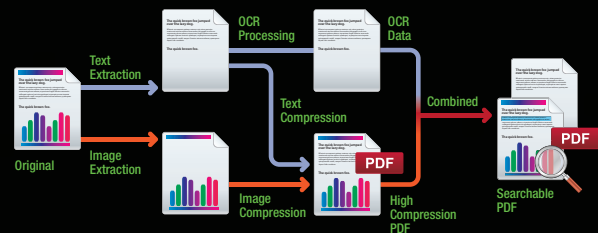




SMART

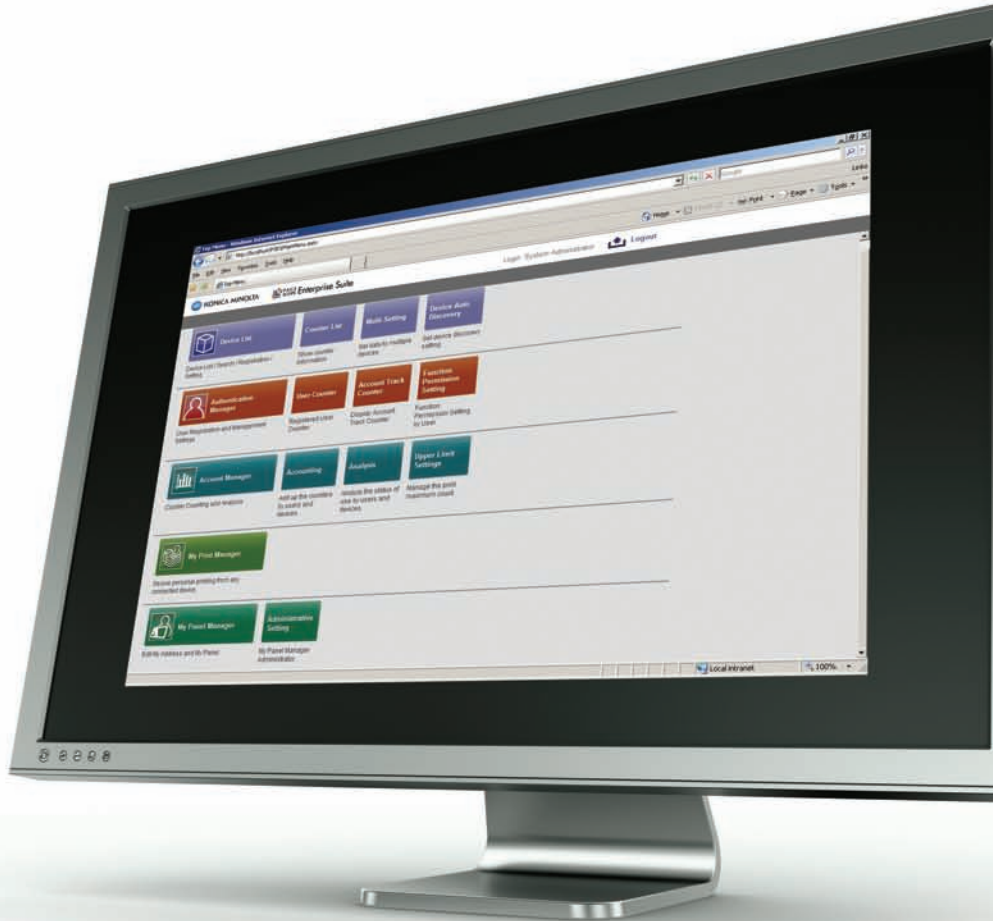
options to make your business more competitive.

STAND-ALONE PRINTER/COPIERS CAN ONLY MEET YESTERDAY'S PRODUCTIVITY GOALS. IN THE 21ST-CENTURY INTERNET ERA, SOFTWARE AND SECURITY ARE ESSENTIAL COMPONENTS OF A TOTAL DOCUMENT SOLUTION. THE BIZHUB 423 SERIES GIVES YOU BOTH – WITH TOTAL FLEXIBILITY AND POWERFUL, CUSTOMIZABLE WORKFLOW OPTIONS TO ENHANCE CONTROL, INCREASE IT POWER, INTEGRATE ACCOUNT TRACKING AND SECURITY FUNCTIONS, AND PROTECT ACCESS TO DOCUMENTS AND DEVICES.



The added advantages of i-Option Kits.

In addition to PageScope, Konica Minolta offers i-Option™ Kits to enhance your workflow in various ways. The LK-101 v2 i-Option Kit provides an AJAX-capable web browser for faster Internet access, Scan-to-SharePoint convenience, and Image Panel interface to manage User Box files more easily. The LK-102 i-Option Kit gives you government-level AES 128-bit PDF encryption. And the LK-105 i-Option Kit adds searchable PDF functionality, so you can quickly locate text and data in PDF files.



The value of comprehensive security protection.

All four bizhub 423 Series models are designed to meet ISO15408 Common Criteria security classification (v. 2.3 to 3.1). To do this, they incorporate a powerful array of security features and functions – including bizhub Secure Print with password security locks to protect sensitive documents, Customized User Authentication for printing, scanning, faxing and User Box, and Audit log/Image log management option to track usage, control access.





Encrypted PDF workflow helps to protect information passing from PC to network. IP Filtering lets you register the IP addresses of PCs on your network. SSL/TLS Encryption protects data during exchange between the MFP and network servers – and S/MIME Encryption safeguards your Email exchanges.



You can also add state-of-the-art security options for your documents and devices, including an HID Proximity Card Authentication Kit (AU-201H) and HID iClass Card Authentication Unit (AU-202H) for secure access to bizhub MFP functions and a Biometric Authentication Kit (AU-102) for quick “ID and print” operation using finger-vein patterns to identify users.

An optional Copy Guard kit (SC-507) gives you password-protected copy functionality. An HDD Lock option applies password protection to your hard disc drive. Job Erase function automatically overwrites your HDD up to three times – and HDD sanitizing overwrites data in 8 different modes to meet the strictest government standards when devices are re-purposed or disposed of.

PageScope Enterprise Suite is a powerful server-based solution that combines four modules for managed printing, account tracking, user authentication and customized user interface in one comprehensive package:

-  MyPrint Manager
-  Account Manager
-  Authentication Manager
-  MyPanel Manager

PageScope MyPrint Manager* holds documents in a secure print queue until users authenticate themselves at any supported Konica Minolta MFP on the print network.

PageScope Account Manager tracks MFP activity based on user log-in – tracking print/copy/scan/fax activity, distinguishing between B&W and color, creating reports, setting limits, allocating costs.

PageScope Authentication Manager provides password-protected log-in by user name, IC Card or Biometric authentication at each MFP, synchronizes to Active Directory, and automatically adds new users as they join your enterprise.

PageScope MyPanel Manager allows individuals to customize an interface that appears at each MFP and disappears when users log out.

*Available Summer 2010

PageScope® power for gains today and growth tomorrow.

Konica Minolta MFPs bring you another advantage competitive document solutions can't offer: the power of PageScope software, an interlocking suite of solutions that accomplish an extraordinary range of business objectives.

PageScope Enterprise Suite operates seamlessly with PageScope Net Care Device Manager, saving time by allowing IT administrators to track print meter counts and user activity from a single point. PageScope Web Connection gives each bizhub device its own “website” for status updates and end-user control. PageScope Print Status Notifier provides automatic alerts when printing is finished or interrupted. And PageScope Data Administrator helps simplify the management of addresses, passwords, accounts.

Why the business world counts on Konica Minolta.

It's more than the value and performance of our products – it's a total commitment to customer satisfaction, service and support. With over 37,000 worldwide employees, cutting-edge research programs in digital and optical technology, and the industry's most complete line of document imaging solutions from desktop to print shop, Konica Minolta was recognized by Brand Keys for a second consecutive year as the #1 Brand for Customer Loyalty in the MFP Office Copier Market. As long as you count on Konica Minolta, you've made the right decision.

COUNT ON KONICA MINOLTA

For more information, please visit:
www.CountOnKonicaMinolta.com



bizhub 223



bizhub 283



bizhub 363



bizhub 423

SPECIFICATIONS					
Print / Copy Speed (Letter,portrait)		B&W: 22 ppm	B&W: 28 ppm	B&W: 36 ppm	B&W: 42 ppm
Monthly Duty Cycle (pages)		60,000	120,000	150,000	150,000
COPY					
Warm-up Time / First Copy Time		Less than 30 seconds / Less than 4.2 seconds		Less than 30 seconds / Less than 3.6 seconds	
Copy Resolution / Copy Quantity		1800 dpi (equivalent) x 600 dpi / 1 - 9,999			
Copy Features		Account Track, Auto Duplex, Card Shot, Cover Mode, Form Overlay, Image Preview, Interrupt, Job Skip, Job List, LDAP, Program/Recall Jobs, Proof Copy, Separate Scan, User Authentication, Watermark			
PRINT – Emperon Print System with bizhub Extended Solution Technology / Open API					
Processor / Speed / Memory		MPC8533E / 667MHz / 2 GB RAM (shared print, copy, scan and fax memory)			
Print Resolution / Grayscale Gradations		1800 dpi (equivalent) x 600 dpi / 256 shades			
Interface		10 Base-T/100 Base-TX/1000 Base-T, USB 1.1, USB 2.0, USB Host			
HD-516 250 GB Hard Disk Drive		• Option	Standard		
Page Description Language		PCL5e/c Emulation, PCL XL ver.3.0 Emulation, PostScript 3 Emulation (3016), XPS v.1.0 (XML Paper Specification)			
Print Features		Encrypted Network Password Printing, Job Skip, MyTab Driver Feature, Print from USB Memory			
SCAN					
Scan Speed with DF-621		Color / B&W: 70 opm (@300 dpi, letter), 42 opm (@600 dpi, letter)			
Scan Resolution / Scan File Formats		200 dpi, 300 dpi, 400 dpi, 600 dpi / TIFF, PDF, Compact PDF, JPEG, XPS, Compact XPS			
Scan Features		bizhub Send, Separate Scan, Scan-to-Email, Scan-to-FTP, Scan-to-SMB, Scan-to-User Box**, Scan-to-USB Memory**, Network TWAIN (via Ethernet TCP/IP), Scan-to-Me and Scan-to-Home, Scan-to-WebDAV			
FAX					
Internet Fax(Color / B&W)		• Option**	Standard		
• FK-508 Fax Kit		Includes Super G3 Fax, IP Address Fax**, PC Network Fax Driver			
• MK-726 Fax Mount Kit		Required for each FK-508 Installation			
• Fax Line / Mode		PSTN (Public Switch Telephone Network), PBX (Private Branch Exchange), Super G3 (Fax line)			
• Fax Transmission Speed		Approx. 3 sec (A4, V.34, 33.6kbps, JBIG)			
• Fax Features		Activity Reports, Fax Forward, F-Code, Group Dial, Memory RX, One-Touch Dial, TSI Routing			
PAPER INPUT					
DF-621 Reversing Automatic Document Feeder		• Option	Standard		
DF-621 Specifications		Capacity 100 sheets, Paper Size: 5.5" x 8.5" to 11" x 17", Paper Weight: Single-sided: 9.31 lb. bond to 34 lb. bond (35-128 g/m ²), Double-sided or mixed originals: 13.25 lb. bond to 34 lb. bond (50-128 g/m ²)			
OC-509 Original Cover		• Option	N/A		
Tray 1 & Tray 2		500-sheet / 5.5" x 7.16" to 11.69" x 17" (140 x 182 mm to A3) / 16 lb. bond to 24 lb. (60-90 g/m ²)			
Bypass		150-sheet / 3.54" x 5.5" to 11.69" x 17" (90 x 140 mm to A3) / 16 lb. to 55.75 lb. (60-210 g/m ²)			
• PC-109 Paper Feed Cabinet / Storage		500-sheet / 5.5" x 7.16" to 11.69" x 17" (140 x 182 mm to A3) / 16 lb. bond to 24 lb. (60-90 g/m ²)			
• PC-208 Paper Feed Cabinet		2 x 500-sheet / 5.5" x 7.16" to 11.69" x 17" (140 x 182 mm to A3) / 16 lb. bond to 24 lb. (60-90 g/m ²)			
• PC-409 Large Capacity Cabinet		2,500-sheet / 8.5" x 11" (A4) (portrait only) / 16 lb. bond to 24 lb. (60-90 g/m ²)			
• DK-508 Copy Desk Storage		Storage Drawer			
Maximum Paper Capacity		3,650 Sheet (total with options)			
PAPER OUTPUT					
Standard Output		Inner Output Tray: 250 sheet Capacity			
• JS-505 Inner Job Separator		Inner Output Tray 1: 150 Sheet Capacity, Inner Output Tray 2: 50 Sheet Capacity			
FINISHING					
• FS-527 Floor Finisher		50-sheet stapling Output Tray 1: 200 Sheet Capacity Output Tray 2: 3,000 Sheet Capacity			
• JS-603 Additional Output Tray for FS-527		Output Tray 3: 100 Sheet Capacity			
• PK-517 Punch Kit for FS-527		2 and 3 Hole Punching			
• SD-509 Saddle Stitch Kit for FS-527		60-page Booklet Making Output Booklet Tray: 20 Booklet Capacity			
• FS-529 Inner Finisher		50-sheet stapling Output Tray: 300 Sheet Capacity			
USER BOX					
User Box Functionality		• Option**	Standard		
Maximum Number of User Boxes		1,000 User Boxes for Document Storage, Re-Output, Distribution			
Maximum Document Storage		Up to 200 Documents per User Box, Up to 3,000 Documents in all User Boxes, Up to 10,000 pages in all User Boxes			
APPLICATION SOFTWARE					
Network and Device Management		PageScope Data Administrator, Driver Packaging Utility, HDD Back-Up Utility, Log Management Utility			
User Tools / Management Tools		PageScope Web Connection, PageScope Direct Print, PageScope Box Operator, PageScope Print Status Notifier, Font Management Utility, Copy Protect Utility / bizhub vCare support			
• Optional Software		PageScope Enterprise Suite: Account Manager, Authentication Manager, MyPanel Manager, MyPrint Manager*, PageScope Net Care Device Manager (standard)			
I-OPTION					
• UK-203		1 GB Memory Upgrade Kit, Required to enable any i-Option, PageScope My Panel Manager			
• LK-101 v2		Enables Web Browsing at Control Panel / Image Panel to create / combine / route documents			
• LK-102		Enables Enhanced Scanning Security with advanced digital IDs for AES 128-bit Encrypted PDF			
• LK-105		Enables scanning to a searchable PDF (OCR)			
EXTERNAL KEYBOARD					
• Keyboard Option / KH-101 Keyboard Holder		External Keyboard / External Keyboard Mounting Kit			
• EK-604 USB Kit		Enables USB connection for External Keyboard			
• EK-605 USB Kit		Enables USB connection for External Keyboard and Bluetooth Printing			
AUTHENTICATION DEVICES					
• AU-102		Biometric Finger Vein Authentication			
• AU-201H		HID Proximity Card Authentication			
• AU-202H		HID iClass Card Authentication			
• AU-211P		CAC/PIV Card Authentication			
• WT-506 Working Table		Working Table to support Authentication Devices			
SECURITY					
Security Features		ID & Print**, IEEE 802.1X Authentication, External Server Authentication, NDS Authentication over TCP/IP, Secure Print**			
SC-507 Copy Guard Kit		Support for SMTP Authentication (POP before SMTP), IP Filtering, Encrypted Communications (SSL, S/MIME, Encrypted PDF), HDD Encryption**, HDD Job Overwrite**, HDD Sanitizing**			
SC-507 Copy Guard Kit		Enables Watermark Security to prevent unauthorized copying of documents and Password Copy Feature			
POWER & DIMENSIONS					
Power Requirements / Consumption		120V / 60Hz @ 12A (110W) / Less than 1500W (max consumption), Less than 7.6 W (low power / sleep mode)			
Dimensions (W x D x H) / Weight		24.5" x 31.2" x 27.6" / 149 lb.		24.5" x 31.2" x 32.2" / 169 lb.	

OPTIONAL STANDARD For more detailed specifications see the bizhub 423 Series Specification and Install Guide.

*Available Summer 2010. **Requires HD-516.



KONICA MINOLTA

KONICA MINOLTA BUSINESS SOLUTIONS U.S.A., INC.

100 Williams Drive
Ramsey, NJ 07446

www.CountOnKonicaMinolta.com
www.kmbss.konicaminolta.us



© 2010 KONICA MINOLTA BUSINESS SOLUTIONS U.S.A., INC. All rights reserved. Reproduction in whole or in part without written permission is prohibited. Konica Minolta is a registered trademark of KONICA MINOLTA HOLDINGS, INC. bizhub, Emperon, and PageScope are trademarks of KONICA MINOLTA BUSINESS TECHNOLOGIES, INC. Simitri is a registered trademark of KONICA MINOLTA BUSINESS SOLUTIONS. All other brands and product names are registered trademarks or trademarks of their respective owners. Design & specifications are subject to change without notice. Some functions may require options, which may or may not be available at time of launch.

COUNT ON KONICA MINOLTA