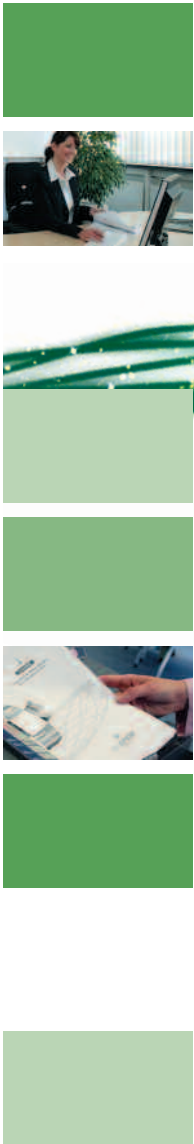




KONICA MINOLTA

Office system bizhub 350



# **bizhub 350**

Your black-and-white office professional

The essentials of imaging

# The one-stop office solution



One specialised device for all your needs. High quality, high-resolution black-and-white prints and copies, fast scans and flexible paper handling and finishing capabilities are the ingredients that went into producing the new bizhub 350.

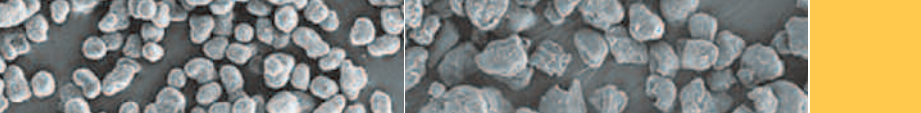
With a speed of 35 A4 images per minute, this compact network printer, copier, and high-speed scanner with optional fax functions is designed especially with the needs of mid-sized offices and departments in mind. If you have a variety of desktop printers and other devices scattered around your workplace, you should examine the many useful features of the multifunctional bizhub 350.

Not only does this versatile and easy to operate device do the work of many different machines, proven state-of-the-art technology like Konica Minolta's extra fine polymerised toner Simitri™ guarantees crisp high-quality black-and-white prints and copies. Your office workflow and efficiency will also benefit from its communication and networking capabilities as well as its sophisticated finishing, IT, and security features.

Let a professional do the job!

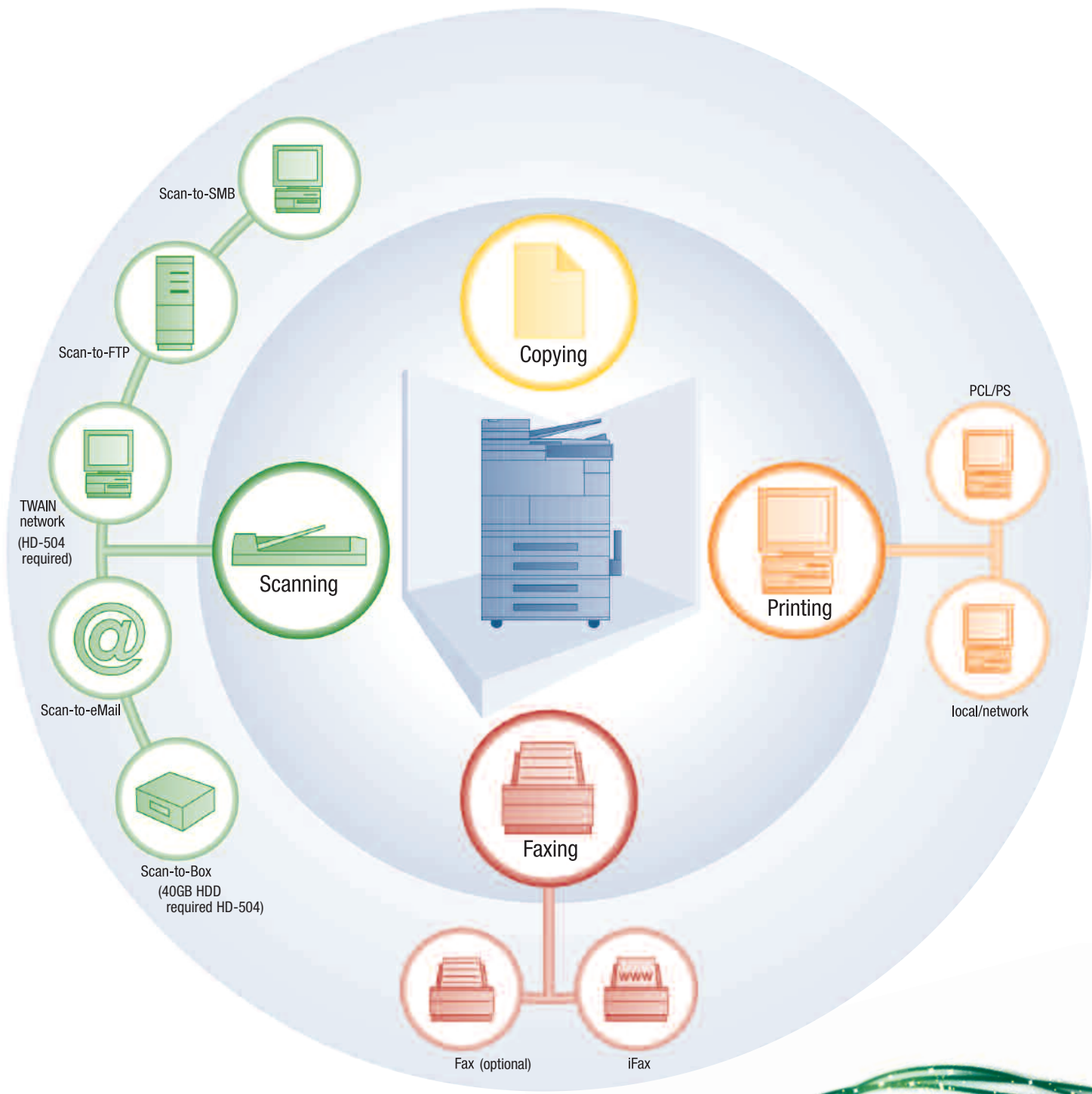
## **bizhub 350**





Simitri™ polymerised toner

Conventional toner

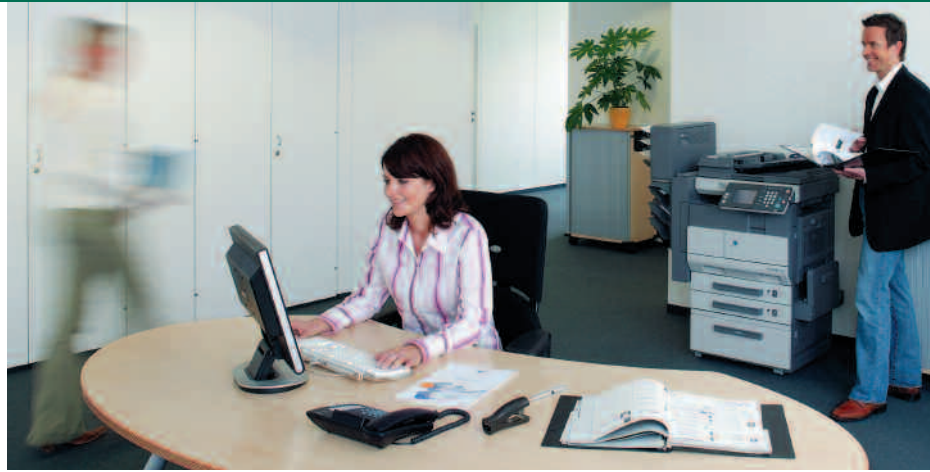


## ➔ Professional support features

Konica Minolta's pioneering Emperon™ print controller powers the comprehensive printing functions provided by the bizhub 350. PCL5e/6 and PostScript 3 are standard and it supports useful features like the Secure Print function, which ensures that print jobs are only released after the correct password is entered at the machine.

- The standard web utilities provide automatic instant information on machine configuration, network settings and paper levels, for example.

- The optional Super G3 fax offers high-speed faxing and fully digitised processing. It assures confidential fax transmission and receipt and provides for practical features like automatic routing, fax poll boxes, PC fax printing, quick memory/batch transmission as well as optional dual line support for the simultaneous transmission and receipt of faxes.



One compact device

# Many professional

- With up to 70 originals per minute, the new bizhub 350 offers high-speed scanning capabilities that make easy central scanning in any network direction you need possible. It also features many different versatile functions that simplify workflow as well as internal and external office communications.
- You can now easily scan complex documents using the optional feeder and transmit them via eMail or send them to your PC or network server in PDF or TIFF format.
- LDAP (Lightweight Directory Access Protocol) support provides you with direct access to your company's eMail database, saving you the hassle of re-entering all addresses manually.







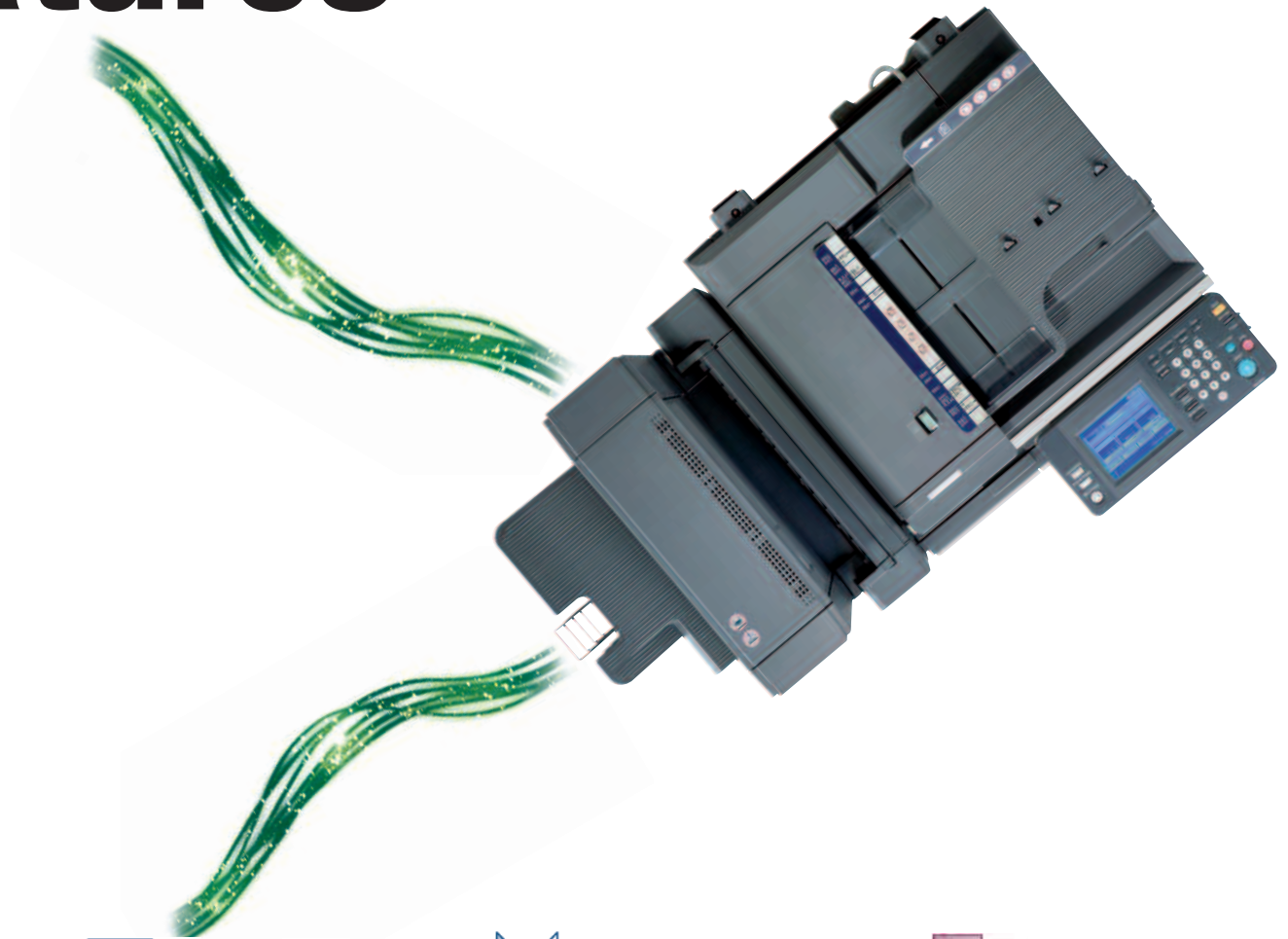
## Professional handling and finishing

The entire range of Konica Minolta's bizhub devices are specialists in practical and easy operations: The bizhub 350 is no exception. It is designed to increase office workflow, save time, and lower costs.

- Paper and toner can be refilled on the fly, so the printing and copying functions never have to be interrupted.
- By adding one of the various paper cabinet options, the standard paper supply of 1,150 sheets can be increased to a maximum of 3,650 sheets.

- A wide range of specialised tasks useful for communications and presentations can be conveniently done in your workplace, saving the costs of outsourcing. With the bizhub 350, you can process on paper ranging from the postcard size A6 up to A3 for charts. Even envelopes can be fed from the bypass.
- The bizhub 350 provides extensive finishing alternatives ranging from offset sorting, mail-bin-sorting, multi-position stapling, punching, up to complete booklet production.

# features



top left  
stapling



stapling



booklet making  
(folding & stapling)



four-hole punching



colour sheet insertion

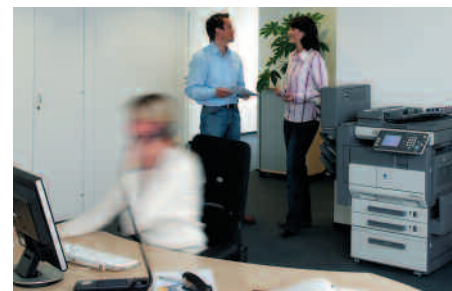
# Professional administrative features



The far-reaching PageScope software utilities provided with the bizhub 350 are especially designed to make countless daily business operations more convenient, enhance workflow, and improve device administration.

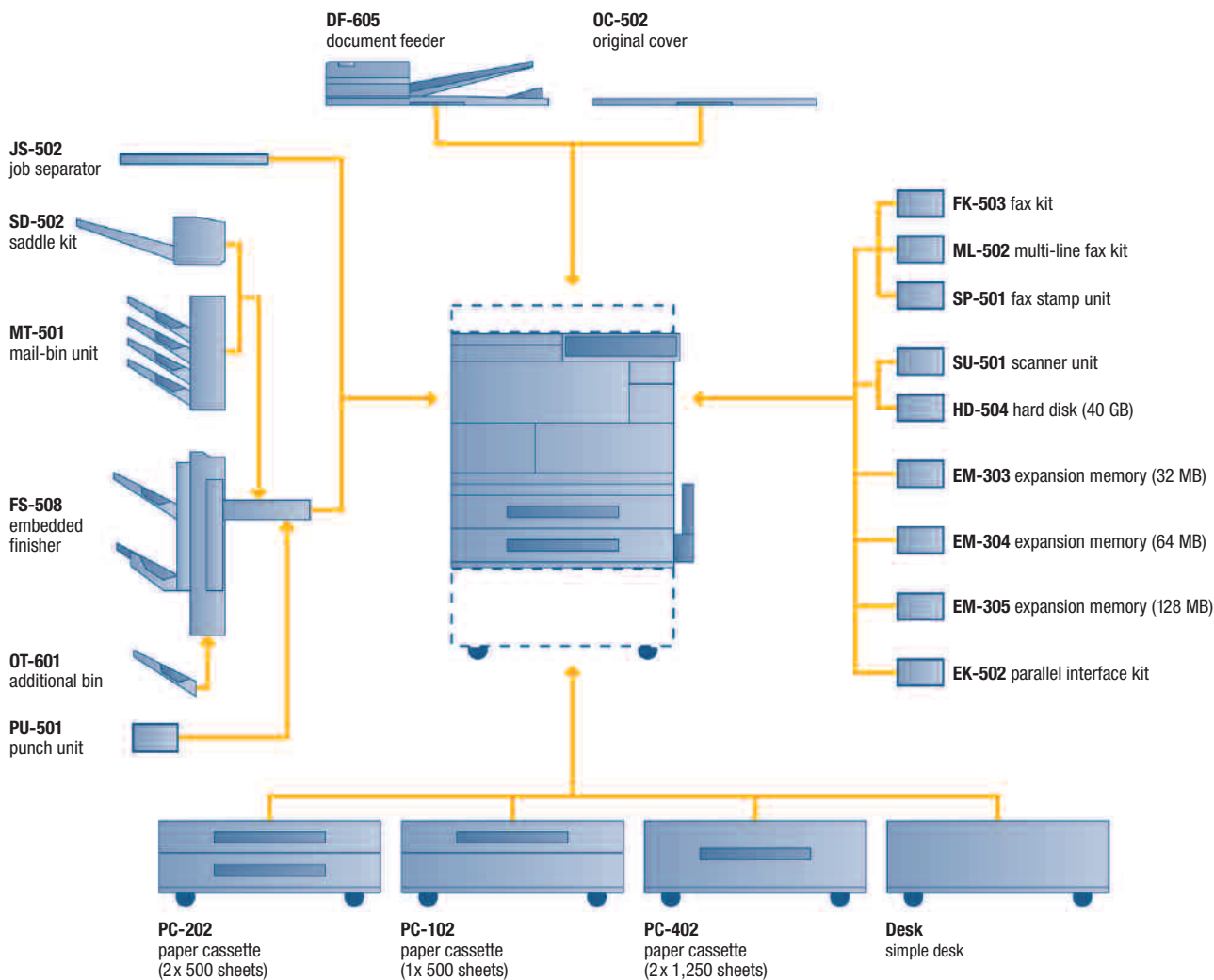
- The bizhub 350's Network Utility PageScope Web Connection simplifies controlling and administering device settings via a standard web browser. No additional software is necessary.
- The PageScope Workware Document Handling software makes merging, converting, forwarding and scanning of documents child's play. Its file structure depicting miniature thumbnails of filed documents allows users to view files without opening the application.
- You can also set up accounts to store and manage your files. This serves as an efficient cost control tool by allowing the administrator to limit print volumes.

Trust the professionals from Konica Minolta!





# Your options at a glance





KONICA MINOLTA

Simitri



## Technical specifications

### Copier specifications

#### Copying process

Electrostatic laser copy

#### Toner system

Polymerised toner

#### Copy/print speed A4

35 ppm

#### Copy/print speed A3

20 ppm

#### 1st Copy/print time

4.8 sec. (A4)

#### Warm-up time

Approx. 24 sec. (standard config.)

Approx. 26 sec. (with fax)

#### Copy resolution

600 x 600 dpi

#### Gradation

Equivalent to 256 gradations

#### Multicopy

1-999, countdown, interruption mode

#### Original format

A5-A3

#### Magnification

25-400% in 0.1% steps

#### Copier memory

192 MB standard  
320 MB maximum

#### Copier hard disk (optional)

40 GB

#### Copy features

Page insertion, booklet creation, combination N-in-1, image rotation, overlay/stamp/watermark (with optional hard disk)

### Printer specifications

#### Print resolution

Max.: 600 x 600 dpi

#### Controller CPU

64 Bit MIPS RISC CPU (300 MHz)

#### Page description language

PCL5e/6  
PostScript 3

### Operating systems

Windows 98/ME/NT4.0/2000/XP/

Server 2003

Macintosh 9.2/10.2 or later

### Interfaces

10-Base-T/100-Base-TX Ethernet,

USB 2.0; Parallel IEEE 1284 (optional)

### Printer memory

192 MB Standard/320 MB Optional

(shared with copier)

### Printer hard disk (optional)

40 GB (shared with copier)

### Scanner specifications

#### Scan speed

Up to 70 OPM (200 dpi via DF)

Up to 41 OPM (600 dpi via DF)

#### Scan resolution

Max.: 600 x 600 dpi

#### Scan modes

TWAIN scan<sup>1)</sup>

Scan-to-eMail

Scan-to-FTP

Scan-to-SMB

Scan-to-HDD<sup>1)</sup>

Scan-to-iFax

(<sup>1)</sup>with optional hard disk)

#### File formats

TIFF, PDF

#### Scan destinations

LDAP support

### Fax specifications (optional)

#### Fax standard

Super G3

#### Fax resolution

Max.: 600 x 600 dpi (ultra-fine)

#### Fax compression

MH, MR, MMR, JBIG

#### Fax modem

Up to 33.6 Kbps

#### Fax functions

Polling, memory transmission, broadcasting, PC fax

### System specifications

#### Automatic document feeder (optional)

Up to 80 originals

#### Paper size

A6-A3

#### Paper weight

60-90 g/m<sup>2</sup> (from trays)

60-210 g/m<sup>2</sup> (from bypass)

#### Paper input capacity

Standard: 1,150 sheets

Max.: 3,650 sheets (optional)

#### Output capacity

Up to 1,200 sheets (optional)

#### Automatic duplexing (standard)

A5-A3

60-90 g/m<sup>2</sup>

#### Finishing modes (optional)

Offset, group, sort, staple, punch, centre-fold, booklet, mailbin sort

#### Power consumption

1,300-1,470 Watt

#### System dimension (W x D x H mm)

677 x 710 x 718

#### Weight

Approx. 74 kg

### System features

#### Accounting

1,000 user accounts

Active Directory support

(user name + password)

User function access definition

#### Software

PageScope NetCare

PageScope NetSetup

PageScope Data Administrator

PageScope Workware

PageScope Web Connection

All specifications relating to paper capacity refer to A4-size paper of 80 g/m<sup>2</sup> quality.

All specifications relating to scanning, copying or printing speeds refer to A4-size paper that is scanned, printed or copied crosswise in multipage, simplex mode.

The memory capacities listed refer to A4-size paper.

Some of the product illustrations contain optional accessories.

Konica Minolta does not warrant that any prices or specifications mentioned will be error-free.

Specifications are subject to change without notice.

Microsoft, Windows and the Windows logo are trademarks, or registered trademarks, of Microsoft Corporation in the United States and/or other countries.

All other brand and product names may be registered trademarks or trademarks of their respective holders and are hereby acknowledged.

Printed in UK.

Konica Minolta  
Business Solutions (UK) Ltd

#### Direct Operations

Miles Gray Road, Basildon

Essex SS14 3AR

Tel: 0800 833864

Fax: 01268 282480

www.konicaminolta.co.uk