



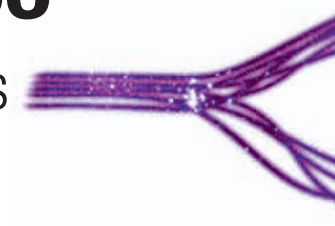
KONICA MINOLTA

The essentials of imaging



bizhub C253 and bizhub C353

Multiple combinations = customized solutions



Office systems bizhub C253 and bizhub C353



Combining technology, functionality and applications

Efficiency in office communication is all about getting things done without fuss or delay. Productivity is imperative – but so is keeping costs down and having one’s hands free for more important tasks than printing or copying.

With the bizhub C253 and the bizhub C353, Konica Minolta presents two highly modular colour and b/w multifunctionals for busy workgroups and departments. Both are easily adapted to fulfil any modern office’s specific demands. Offering individual combinations of innovative technology, comprehensive functionality and a wealth of advanced applications, the bizhub C253 and C353 can be customized into almost any all-round communication solution a busy team or workgroup might require.

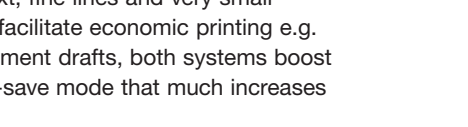
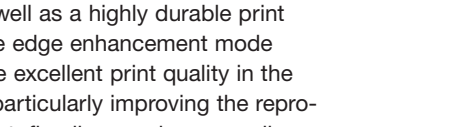
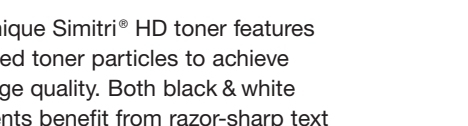
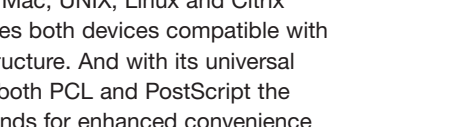
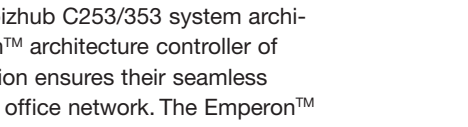
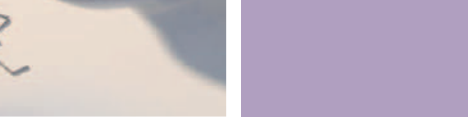
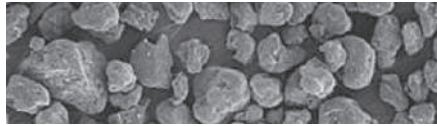
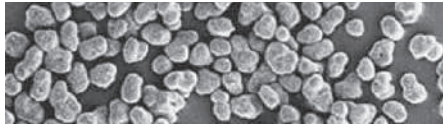
- With identical b/w and colour speeds of 25 respectively 35 pages per minute their performance is equally impressive as productive colour devices and as versatile b/w multifunctionals.
- To pair highest image quality with absolute reliability Konica Minolta incorporated an array of cutting-edge technologies, such as the tandem engine and four individual dual-beam laser units.

- Advanced print, scan, user box and other networking functions streamline every-day office tasks, save time and enhance the overall efficiency of every user.
- Thanks to Konica Minolta’s newest-generation Simitri® HD polymerised toner the bizhub C253 and C353 deliver an impressive print quality. At the same time a 50% toner-save mode allows to economise, much increasing cost efficiency.
- Innovative security features, including biometric finger-vein authentication, keep critical information safe. And comprehensive device management is made easy with a generous range of software tools and utilities.

With such versatility, flexibility and efficiency, the bizhub C253/C353’s amazingly competitive printing costs might come almost unexpected – but will no doubt be highly welcome by any team, workgroup or office looking to economize!

→ Workflow options





Combined technologies. Advanced modularity.

In the bizhub C253 and C353 several cutting-edge technologies combine into a technically superior all-round communication solution that stands for reduced job times, increased efficiency and unsurpassed reliability. Of particular note is the versatile optional finisher which incorporates a range of proprietary Konica Minolta technologies – making it extremely compact yet highly modular. Enhancing and improving the bizhub C253/C353's performance, this modularity enables customized configurations that perfectly fulfil the most diverse demands.

→ Versatile finishing choices

Finishing on a multifunctional colour and b/w device has never been so flexible! The optional finisher for the bizhub C253/353 is extremely compact and integrates almost completely into the device, keeping its footprint conveniently small. And it impresses with unparalleled modularity: Upgrades to the finisher's stapling and offset sorting functions include a punching kit; a booklet option to produce centre-stapled and folded booklets; or a mail-bin unit which allows to separate output e.g. for different departments or distinguish prints, copies and incoming faxes. Ranging from automatic booklet making via the creation of stapled and punched reports to oversized banner printing the bizhub C253/353's versatile document production capabilities are truly impressive and quite unique in their class. Where requirements are less complex, a job separator tray offers a welcome alternative to separate e.g. printed from faxed output.

→ Configurations



→ Emperon™ controller

At the core of the bizhub C253/353 system architecture an Emperon™ architecture controller of the newest generation ensures their seamless integration into any office network. The Emperon™ provides Windows, Mac, UNIX, Linux and Citrix support which makes both devices compatible with virtually any infrastructure. And with its universal driver interface for both PCL and PostScript the Emperon™ also stands for enhanced convenience and ease of use.

→ Simitri HD® polymerised toner

Konica Minolta's unique Simitri® HD toner features tiny, uniformly shaped toner particles to achieve an outstanding image quality. Both black & white and colour documents benefit from razor-sharp text and finest lines as well as a highly durable print finish. An innovative edge enhancement mode further supports the excellent print quality in the bizhub C253/353, particularly improving the reproduction of faded text, fine lines and very small characters. And to facilitate economic printing e.g. of samples or document drafts, both systems boost a clever 50% toner-save mode that much increases cost efficiency.

bizhub c253 

bizhub c353 



Combined functionalities enhance communication

The efficient and streamlined performance of an office much depends on what technical and functional support is available. The bizhub C253 and C353 leave little to be desired where powerful office multifunctionality is concerned. Providing comprehensive scan, fax, box, printing and copying functions, they speed up procedures and workflows and increase overall office productivity. This elaborate combination of functionalities effectively helps reduce the running costs of any office.

➔ Advanced scanning

Busy offices these days depend on comprehensive scanning functionality to streamline the distribution and sharing of information. With the bizhub C253 and C353 scanning is possible to eMail, FTP, SMB and user box, with scan formats including multi-page PDF and XPF, JPG and TIFF. In addition Konica Minolta's unique ultra-compact PDF feature considerably reduces the size of large files before transmission – ideal for internal and external communication and the fast sharing of documents.

➔ Flexible faxing

The fax communication capabilities on the bizhub C253 and C353 are impressive: Included are Digital Fax and Digital Store, with a choice of forward as eMail, save-to-box, save-to-PC. Internet Fax enables the sending and receipt of fax data as eMail attachments. IP Fax lets users send faxes in colour to other bizhub devices on the Intranet. Various security features make confidential fax communication reliably safe. And wherever required, both devices can be upgraded with a conventional fax kit option enabling the transmission and receipt of paper originals.





→ Elaborate box functionality

Konica Minolta's unique User Box approach makes the storing and managing of information on the bizhub C253/353's internal hard disc truly efficient. Up to 1,000 user boxes can be set up with flexible access rights and boxes defined as public, for group use or private; where required passwords are easily assigned. In addition the PageScope Box Operator allows the direct accessing and downloading of the stored data from the PC, while multi-file preview enables fast searches via thumbnails, helping users find files quicker and more easily.

→ Productive printing

Busy offices need to eliminate delays wherever possible. With the bizhub C253/353's comprehensive printing functionality waiting times at the printer are a thing of the past. Their efficiency begins with generous paper handling features, including up to 5 paper sources and the processing of heavy media. A newly designed duplex mechanism with a unique reversing roller system achieves 100% duplex productivity, speeding up the completion of longer double-sided print runs. And the ingenious banner printing function facilitates the creation of display materials – oversized formats of up to 1.2 metres length can be produced with ease.

New in both devices is the highly convenient USB direct scan and direct print functionality that lets the user bypass any application software: With the bizhub C253/353 it's possible to scan paper originals directly on to a USB stick; likewise printing directly from the stick is also possible. This feature is extremely practical e.g. to collect information during visits, meetings etc. and only print it if and when required.

→ Enhanced colour imaging

The Emperon controller includes a highly efficient automated colour management for routine tasks. Thanks to its ICC profile support ICC profiles can easily be uploaded and taken advantage of – this streamlines colour reproduction and ensures more precise colour output. And for even more versatility and performance, the optional IC-409 Fiery controller makes available a range of flexible colour management tools that give professional users plenty of room for their creativity promising individual results.

→ Cost-effective automation

Offering a special b/w mode, the bizhub C253/353 are still able to perform even after the colour toner is depleted. This is just one aspect of their attractively economic performance which is aided by a high degree of automation: Auto-colour recognition ensures that colour is printed only where required. Automatic paper selection avoids misprints on the wrong format, while thanks to automatic paper rotation production of a job can continue even if the required size in the correct orientation is no longer available.



→ Finishing options



corner stapling



2-point stapling



duplex



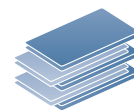
combined mixplex/mixmedia



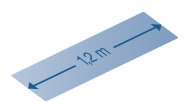
sheet insertion, report



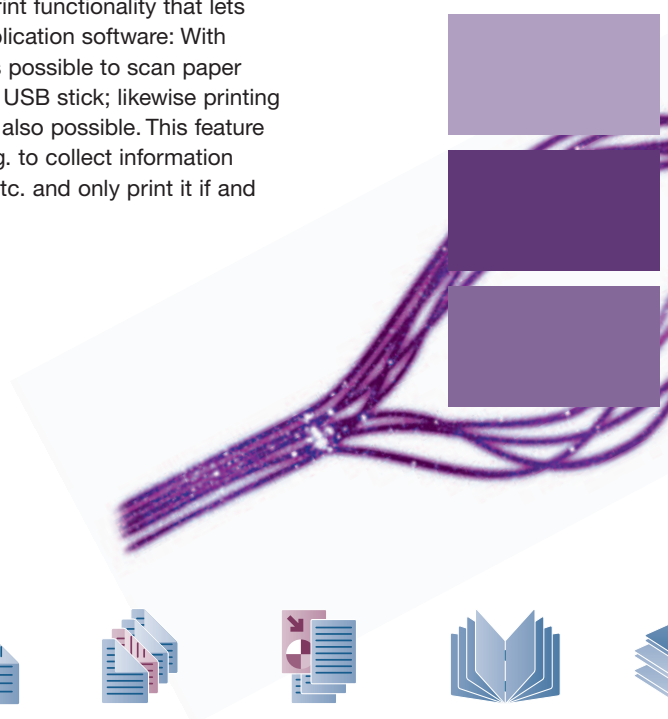
booklet



offset sorting



banner printing



Combined applications for **streamlined administration.**

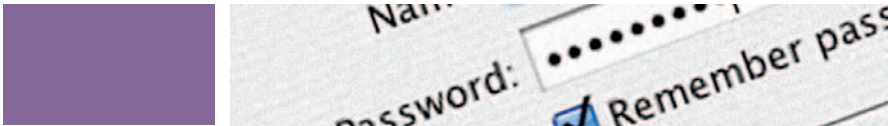


Competent administration and comprehensive security are both essential to the smooth running of busy offices. With the PageScope software tools and utilities Konica Minolta offers a complete administration software suite that is much appreciated as valuable support to the administrator's complex task. And users of the bizhub C253/353 need never fear for their critical data: the extent of Konica Minolta's security standards is renowned; both devices adhere to the Common Criteria and are certified to ISO 15408 EAL3.

Essential security

The bizhub C253 and C353 come equipped with comprehensive security functionality – and it's all standard, because Konica Minolta is well aware of the importance of keeping customer data and information safe!

- Konica Minolta has incorporated the technology for an innovative biometric authentication option into the bizhub C253/C353: Finger vein authentication works with images of finger vein patterns captured by scanning the finger – this is highly secure as it's virtually impossible to falsify! And as users no longer need to remember passwords, this biometric measurement is very fast and convenient. Alternatively, authentication by non-contact IC card is also available.
- Other important security features include secure printing, ensuring that a print job is only processed once the user has entered his individual password directly at the bizhub C253/C353 – with this feature leaving confidential documents lying around is a thing of the past! PDF encryption prevents the unauthorised tampering with PDF data. With encrypted communication (SSL) confidential data are useless if intercepted during transmission. Encryption is also available to make data storage on the internal system hard disc secure.



→ Administrator competence

The generous PageScope suite of administrator tools helps to automate set-up procedures, streamlines network integration and provides reliable status monitoring as well as efficient device management.

- Enabling fast access and simple monitoring of individual or all devices on the network, PageScope Netcare satisfies essential administrator demands. Automatic eMail notifications alert users to the status of each device, so that any problem can be dealt with immediately and the uptime of all monitored equipment is maximized.
- Comprehensive account and data management can be a real challenge – not so with the PageScope Data Administrator! It makes the integration of new equipment into existing workflows and the programming of eMail addresses fast and simple. Authentication and account data can be individually programmed per user, including limited access rights to specific functions such as colour printing. With that the Data Administrator can also help to cut costs and control output volumes.
- An ideal central administration tool for all bizhub devices in the network is the PageScope Account Manager. Its web-based interface offers easy access to the server software from anywhere in the network, providing the administrator with one unified platform for all accounting tasks. With

features like central counter collection and analysis, defining and managing access limitations and print volume limits per user, plus many more, the Account Manager enables complete cost control related to document in- and output from copying, printing, scanning and faxing.

- Konica Minolta's proven remote diagnostic system ensures pro-active and highly flexible service support. CS Remote Care helps to keep output devices running smoothly, minimising interruptions and maximising system availability. All relevant system data are transmitted directly to the Konica Minolta service in an automated process that never needs user intervention.

There can be no doubt that the bizhub C253 and C353 are highly competent to handle each and every communication task a busy office might face. In these models Konica Minolta has combined a high degree of versatility, flexibility and efficiency – and yet focused on absolute cost efficiency as well.



→ Windows Vista Support

Includes the easy installation via DPWS (Device Profile for Web Services) as well as direct scanning and printing of XPS files.





KONICA MINOLTA

Simitri HD

High Definition Polymerised Toner



CITRIX



Technical specifications

Copier specifications

Copying process

Electrostatic laser copy, Tandem, indirect

Toner system

Simitri® HD polymerised toner

Copy/print speed A4

Colour/Mono up to 25 ppm (bizhub C253)

Colour/Mono up to 35 ppm (bizhub C353)

Copy/print speed A3

Colour/Mono up to 12.5 ppm (bizhub C253)

Colour/Mono up to 17.7 ppm (bizhub C353)

1st Copy/print time (A4)

Colour 11.7 sec/Mono 7.7 sec. (bizhub C253)

Colour 8.5 sec/Mono 5.9 sec. (bizhub C353)

Warm-up time

Approx. 80 sec. (bizhub C253)

Approx. 75 sec. (bizhub C353)

Copy resolution

600 x 600 dpi

Gradation

256 gradations

Multi-copy

1–999, interruption mode

Original format

A5–A3

Magnification

25–400% in 0.1% steps, Autozooming

Copy functions

Chapter, cover and page insertion,
Proof copy, Adjustment test print,
Digital art, Job Recall, Job setting memory,
Poster Mode, Overlay, Stamping,
Copy Protection

Printer specifications

Print resolution

Equivalent to 1,800 x 600 dpi

Controller CPU

PowerPC MC7447 @ 1 GHz, 64 BIT

Page description language

PCL 6c (PCL 5c + XL3.0), PostScript 3

Operating systems

Windows 2000/XP/XP64

Windows VISTA 32/64

Windows VISTA DPWS support

Server 2000/2003/2003 x64

Macintosh 9.x/10.x

Unix/Linux/Citrix

Print functions

Direct print of PCL, PS, TIFF, XPS, PDF and
Encrypted PDF files
Print from USB memory (optional)
Mixmedia and Mixplex
Job programming "Easy Set"
Overlay, Watermark, Copy Protection,
Toner safe mode

Scanner specifications

Scan speed

Colour up to 70 opm (300 dpi via DF)

Mono up to 70 opm (300 dpi via DF)

Scan resolution

Max.: 600 x 600 dpi

Scan modes

Network TWAIN scan

Scan-to-eMail

Scan-to-FTP

Scan-to-SMB

Scan-to-Box

Scan-to-DPWS

Scan-to-USB (optional)

File formats

JPEG, TIFF, XPS, PDF, Compact PDF,

Encrypted PDF

Scan destinations

2,100 (single + group), LDAP support

Scan functions

Annotation (text/time/date) for PDF

Up to 400 job programs

Fax specifications

Fax standard

Super G3 (optional)

Fax transmission

Analogue, i-Fax, IP-Fax, SIP-Fax

Fax resolution

Max.: 600 x 600 dpi (ultra-fine)

Fax compression

MH, MR, MMH, JBIG

Fax modem

Up to 33.6 Kbps

Fax destinations

2,100 (single + group)

Fax functions

Polling

Time shift

PC-Fax

Receipt to confidential box

Receipt to eMail, FTP, SMB

System specifications

System memory

1,024 MB

System hard disc

60 GB

Interface

10-Base-T/100-Base-T/1000-Base-T

Ethernet

USB 2.0

Automatic document feeder

Up to 100 originals

Paper size

A6–A3 full bleed

Banner paper max. 1,200 x 297 mm

Customised paper sizes

Paper weight

64–271 gsm

Paper input capacity

Standard: 1,150 sheets

Max.: 3,650 sheets

Paper output capacity

Max.: 1,200 sheets

Automatic duplexing

A5–A3 full bleed

64–256 gsm

Finishing modes (optional)

Offset, Group, Sort, Staple, Punch,

Centre-fold, Booklet

Copy/print volume (monthly)

Rec.: 30,000/Max.: 45,000 (bizhub C253)

Rec.: 40,000/Max.: 60,000 (bizhub C353)

Power consumption

220-240 V / 50/60Hz

Less than 1.5 KW (system)

System dimensions (W x D x H, mm)

640 x 849 x 770

System weight

Approx. 99 kg

System features

Security

ISO 15408 EAL3 (in evaluation)

Accounting

Up to 1,000 user accounts

Active Directory support

(user name + password)

User function access definition

Biometric Authentication

(finger vein) (optional)

IC Card reader (optional)

Account Manager server (optional)

Software

PageScope NetCare

PageScope Data Administrator

PageScope Box Operator

PageScope Workware (Trial)

Direct Print Utility

Print Status Notifier

Log Management Utility

Driver Packaging Utility

All specifications relating to paper capacity refer to A4-size paper of 80 gsm quality.

All specifications relating to scanning, copying or printing speeds refer to A4-size paper that is scanned, copied or printed crosswise in multipage, simplex mode.

Some of the product illustrations contain optional accessories.

Konica Minolta does not warrant that any prices or specifications mentioned will be error-free. Specifications are subject to change without notice.

Microsoft, Windows and the Windows logo are trademarks, or registered trademarks, of Microsoft Corporation in the United States and/or other countries.

All other brand and product names may be registered trademarks or trademarks of their respective holders and are hereby acknowledged.

Printed in Germany on chlorine-free bleached paper.

Your Konica Minolta Business Solutions Partner:



Konica Minolta
Business Solutions Europe GmbH
Europaallee 17
30855 Langenhagen • Germany
Tel.: +49 (0) 511 74 04-0
Fax: +49 (0) 511 74 10 50
www.konicaminolta.eu