



KONICA MINOLTA

The essentials of imaging



OFFERING  
THE SKILLS  
TO WIN



# **bizhub C220, C280 and C360**

Innovative, affordable, easy

**Office systems bizhub C220/C280/C360**



# The hub of any office

## whether black & white or colour

The bizhub C220, C280 and C360 are innovative devices for every-day document production in the office. They are designed to meet all of the needs of the standard office, whether copy or print, fax or scan, black & white or colour, single-sided or double-sided, single sheet output or booklet.

With this product series, Konica Minolta have raised the bar once again, by developing machines with improved ease-of-use, increased flexibility, market leading environmental benefits and security features.

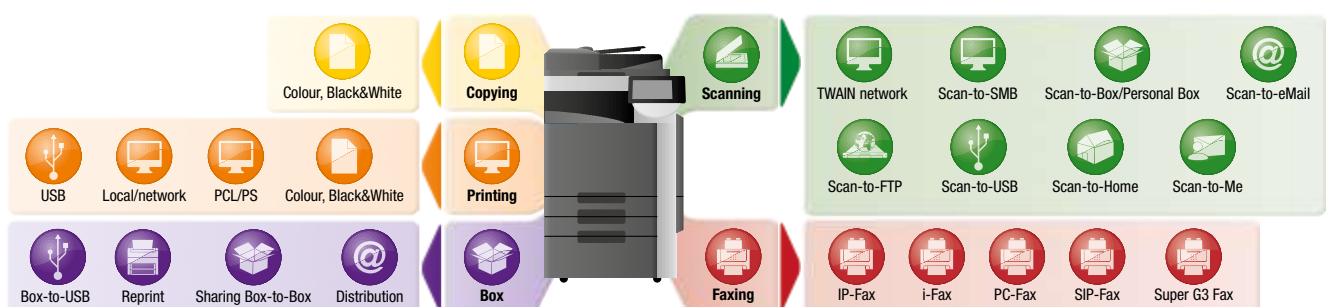
- As true multifunctionals, all three can be equipped to print, copy, scan and fax, handling the complete communication of the busy office with ease and competence. Their compact and stylish design doesn't take up a lot of room but makes them an attractive feature in any office.

- Complying with the latest regulations of the Energy Star and the German Blue Angel, the bizhub C220, C280 and C360 feature extremely quiet operation

and greatly reduced energy consumption levels. They are comfortable to work side by side with and impressively eco-friendly to operate.

- The bizhub C220, C280 and C360 come inclusive of Konica Minolta's "skills to win" – they provide complete office communication in a single device, feature latest technology, deliver top class quality in black and white as well as colour and impress with their flawless eco-performance.

### → Workflow options





# Innovative, affordable, easy – whether black & white or colour

## → Advanced technology

Equipped with Konica Minolta's proprietary Auto-Refining Developing System (ARDS), the bizhub C220, C280 and C360 guarantee a stable and constant b/w image quality. This innovative technology continuously refreshes the developer, adding a certain amount with each new toner cartridge. This means that Konica Minolta has once again raised the bar in terms of image quality, ensuring that the bizhub C220, C280, and C360 are the perfect choice in any line of business.

## → Efficient access and cost control

Thanks to the bizhub C220, C280 and C360's comprehensive access control features, the colour functionality can easily be disabled as required, allowing only some users to produce colour documents while restricting the majority of users to b/w printing and copying.

The allocation of such access rights and function restrictions begins with standard password authentication which reliably limits system access to authorised users. Up to 1,000 user accounts are conveniently created with Active Directory support and can include specific access rights for individual users.

For more user convenience, authentication can also be via optional biometric finger vein scanner or non-contact IC-card. Another feature aiding cost control is the account tracking functionality which allows monitoring of the monthly document production costs for single users or whole departments. These efficient control mechanisms provide increased transparency of usage and help keep document production costs in check, whether the use of colour is permitted or not.

## → Configurations



## → Impressive ease of use

As innovative multifunctionals for all-round office communication, the bizhub C220, C280 and C360 offer enhanced ease of use and many everyday conveniences. Their user-friendly colour touch screen can be tilted and turned to guarantee excellent visibility from any angle. Colour preview and thumbnail features allow checking exactly what the final document will look like, avoiding mistakes before printing. The logical screen layout, animated help and guidance features as well as an optional hardware keyboard further support the simple and straightforward operation.

Ease of operation has also been improved with the introduction of a customised printer driver tab: under MyTab users can individually combine their frequently used features enabling them to make all settings in a single screen.

**bizhub c220** 

**bizhub c280** 

**bizhub c360** 

# Enhanced functionality – whether black & white or colour



## → Productive printing and copying

Printing and copying are straightforward and productive with the bizhub C220, C280 and C360. Equipped with one of Konica Minolta's powerful Emperon™ controllers, they feature a fast 1 GHz CPU (667 MHz on bizhub C220), 2 GB standard memory, 250 GB HDD, support PDF 1.7 and with advanced PostScript compatibility offer attractive quality enhancements. The proprietary Emperon™ controller technology ensures seamless system integration into any standard network environment, enabling multiple users to process their print jobs quickly and simultaneously without experiencing long delays.

The product series offers an extensive range of attractive print and copy features to facilitate the creation of both standard and more complex documents, including forms overlay, watermark and n-up. Duplex printing or copying helps reduce costs by

saving paper, filing space and postage. Auto Colour Selection avoids inadvertent printing or copying in colour where black & white is sufficient.

## → Efficient scanning and faxing

Highly efficient scanners, the bizhub C220, C280 and C360 facilitate the distribution and sharing of information. With fast 70 opm they offer high-speed scanning to eMail, FTP, SMB and user box. Scan formats include PDF and compact PDF, XPS and compact XPS as well as TIFF and JPEG.

The clever scan-to-USB feature gives user flexibility an attractive boost, enabling time-saving direct scanning from the bizhub C220, C280 or C360 to the USB stick without the detour via the PC. Available in combination with user authentication, the functions scan-to-Me and scan-to-Home reliably ensure that scans are sent only to the user's own E-Mail address (scan-to-Me) or own registered PC folder (scan-to-Home).



An optional scanning highlight is the processing of scanned data with OCR to create searchable PDF documents. These include a full-text search capability, enabling users to find the document they want quickly and conveniently on their PC.

To any location requiring fax communication, the bizhub C220, C280 and C360 offer digital as well as optional analogue fax capabilities. User convenience is ensured with the clever PC fax functionality that provides direct faxing from the PC without having to print documents first. Various security features make confidential fax communication reliably safe.

## → Advanced user box functionality

Konica Minolta's unique User Box approach makes the storing and managing of information on the internal hard disc of the bizhub C220, C280 or C360 highly efficient, facilitating the sharing of scanned, printed, copied and faxed documents and providing fast access to regularly required documents, such as terms and conditions or forms. Up to 1,000 user boxes can be set up with flexible access rights and boxes defined as public, group use or private.

## → Comprehensive security

Offering various features beyond Konica Minolta's generous security standards, the bizhub C220, C280 and C360 are certified to ISO 15408 EAL3. With client authentication via IEEE 802.1x, they can be connected to secure networks. Enhanced security against unauthorised copying is also available. When the Copy Guard option is enabled, an original will not be copied at all because the MFP detects a special protection pattern while Password Copy enables copying of the protected original only if the correct password is entered.

The secure printing function is available to safeguard confidential documents. Printing is only possible after the password allocated to the print job is entered directly via the MFP's touch screen. In combination with access control via authentication, the print jobs thus secured will automatically be produced as soon as the user has authenticated themselves.

## → PageScope Enterprise Suite

This efficient software suite gives administrators a full monitoring and management application that provides complete access to all user- and device-related information from a central server platform. The PageScope Enterprise Suite comprises of:

- The PageScope Net Care Device Manager for the central implementation of system network configurations and central status monitoring
- The PageScope Authentication Manager for central management of the user database and user rights
- The PageScope Account Manager for the central collection of detailed counter readings and the ensuing cost calculation
- The PageScope MyPanel Manager for the individual creation of central user profiles, personalised address books and scan destinations.



# Media & finishing versatility – whether black & white or colour

## → Impressive media competence

The bizhub C220, C280 and C360 come with excellent media capabilities. They process standard paper formats up to A3+ as well as any customised size. Paper qualities of up to 256 gsm can be fed from the trays; the bypass also accepts 271 gsm as well as special media like labels, transparencies and envelopes. The standard paper capacity of 1,150 sheets can be extended to an impressive 3,650 sheets. Via the bypass it is possible to produce banners of up to 1.2 metres length, facilitating the creation of project schedules, floor plans, holiday schedules and any other oversized document.

Thanks to their comprehensive media flexibility, the bizhub C220, C280 and C360 show competence in the production of every imaginable office document, from correspondence, invoices, meeting minutes and briefs to presentations, forms, analyses, statistics and reports – whether in black and white or colour.

## → Attractive finishing flexibility

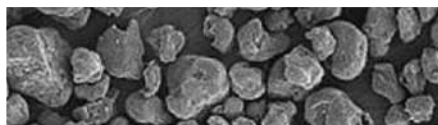
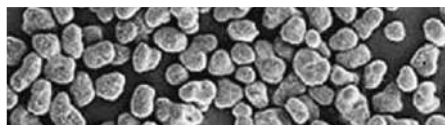
With their choice of three output devices – including a modular floor-type finisher, a highly compact integrated staple finisher and a job separator – the bizhub C220, C280 and C360 can be suitably equipped for the individual needs of any office.

The floor-type finisher has a generous output capacity of 3,200 sheets and thanks to its modular concept can be enhanced with various features. In addition to multi-position stapling of manuals, reports and other comprehensive documentation, punching can be equipped, ideal for applications such as meeting minutes. The inline booklet feature provides the fully automatic production of centre-folded and saddle-stitched brochures and booklets of up to 60 pages.

A low-cost finishing alternative is the smaller staple finisher that integrates almost completely into the device's mainbody, keeping the system's footprint extremely compact. Also available is a simple and straightforward job separator which keeps different jobs clearly separate.

Simitri® polymerised toner

Conventional toner



# Ecologically sound – whether black & white or colour

## → Low TEC values

bizhub C220, C280 and C360 feature among the lowest TEC values in their class. The TEC value represents an electrical product's typical electricity consumption (TEC) within one week with the calculation based on average office use. The systems switch to energy-saving mode faster and consume considerably less power in sleep mode than previous products. Not only does this support the eco-friendly operation of the complete product series; it also helps to save running costs and keeps all three models well within the latest regulations of the Energy Star and the German Blue Angel.

## → Eco-friendly Simitri® HD toner

The low energy consumption of the bizhub C360 series is also largely due to Konica Minolta's state-of-the-art fusing technology. The use of Simitri® HD polymerised toner enables fixing at lower temperatures, which minimises the warm-up period while maximising energy efficiency. At the same time the polymerisation process of Simitri® HD toner has considerably less environmental impact than the production of conventional toner. And yet, with its tiny and uniformly shaped toner particles Konica Minolta's proprietary Simitri® HD polymerised toner achieves an image quality second to none. Razor-sharp text and lines, colours that don't fade, and a smooth and highly durable print finish ensure longer-lasting prints of better quality than ever – while nevertheless supporting a faultless eco performance.

## → Extra-quiet operation

With their extremely quiet operation, the bizhub C220, C280 and C360 are highly comfortable to work side by side with and perfectly suited for installation in any location, even in open-plan offices. Numerous technical improvements throughout the products, including steps to eliminate or reduce unpleasant noises, e.g. fan noise, have greatly reduced the operating noise and optimised the systems' overall noise emission. As a result, all three products are top of the class in their extra-quiet operation.

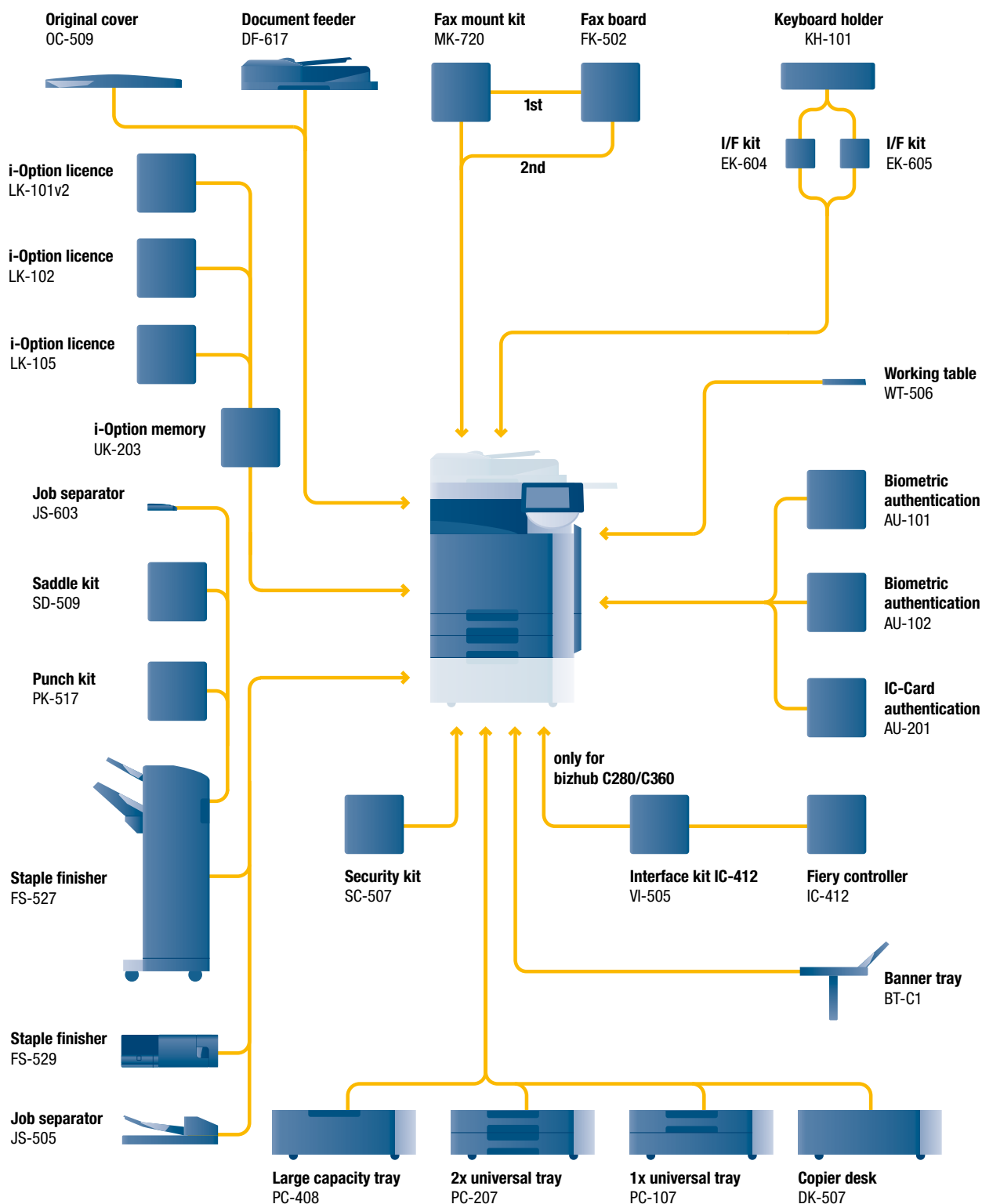


## → Resource-friendly design

In compliance with its ISO 14001-based environmental management system, Konica Minolta promotes resource-friendly product development, including the use of recycled materials wherever possible, and a consumables design that enables the fast and simple separation into their component materials for easy recycling. For the bizhub C220, C280 and C360 this included the redesign of the toner bottle to make its recycling more straightforward and convenient.

As part of its zero waste manufacturing concept, Konica Minolta strives to minimise the ecological impact of its products with efficient environmental activities throughout all stages of the product lifecycle. One aspect of this are reusable or recyclable packaging materials for hardware and consumables to minimise the waste generated by each device. Smaller packaging also helps reduce transport and storage costs. Activities include the promotion of energy-saving issues as well as comprehensive efforts for recycling and reuse – all in the interest of maximised environmental protection.

➔ Option diagram





## → Descriptions

<b>bizhub C220/C280/C360</b>	Communication centers with 22/28/36 ppm in b/w and colour. Standard Emperon™ print controller with PCL 6c, PostScript 3, PDF 1.7 and XPS support. Paper capacity of 500 + 500 sheets and 150 sheets manual bypass. Media from A6 to A3+, 1.2 m banner and 60–271 gsm. 2 GB memory, 250 GB hard disc and 1 GB Ethernet standard
<b>DF-617 Document feeder</b>	Automatic document feeding of up to 100 originals
<b>OC-509 Original cover</b>	Cover instead of ADF
<b>FS-527 Staple finisher</b>	50 sheet stapling, output capacity 3,200 sheets
<b>PK-517 Punch kit</b>	4 hole punching
<b>JS-603 Job separator</b>	Separation of e.g. fax and copy/print output for FS-527
<b>SD-509 Saddle kit</b>	Booklet finishing
<b>FS-529 Staple finisher</b>	50 sheet stapling, output capacity 300 sheets
<b>JS-505 Job separator</b>	Separation of e.g. fax and copy/print output
<b>PC-107 1x Paper cassette</b>	A5–A3; 1 x 500 sheets; 60–256 gsm
<b>PC-207 2x Paper cassette</b>	A5–A3; 2 x 500 sheets; 60–256 gsm
<b>PC-407 Large paper cassette</b>	A4; 2,500 sheets; 60–256 gsm
<b>DK-507 Copier desk</b>	Storage of paper; etc.
<b>BT-C1 Banner tray</b>	Multipage banner printing
<b>VI-505 Interface kit</b>	Fiery controller interface card

**IC-412 Fiery controller** Professional colour print controller, available for bizhub C280/C360

<b>AU-101 Biometric authentication (basic)</b>	Finger vein scanner
<b>AU-102 Biometric authentication (advanced)</b>	Finger vein scanner
<b>AU-201 IC-Card authentication</b>	IC-Card scanner
<b>KH-101 Keyboard holder</b>	To place the USB keyboard
<b>EK-604 I/F kit</b>	USB keyboard connection
<b>EK-605 I/F kit</b>	USB keyboard connection and Bluetooth
<b>MK-720 Fax mount kit</b>	I/F board for fax FK-502
<b>FK-502 Fax board</b>	Super G3 fax
<b>WT-506 Working table</b>	Authentication device placement
<b>LK-101v2 i-Option licence</b>	Webbrowser, Image panel
<b>LK-102 i-Option licence</b>	PDF enhancement
<b>LK-105 i-Option licence</b>	Searchable PDF
<b>UK-203 i-Option memory</b>	Memory extension for i-Option
<b>SC-507 Security Kit</b>	Copy Guard and Password Copy

## → Finishing options



corner stapling



2-point stapling



four-hole punching



two-sided printing/  
duplex



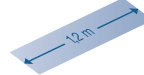
combined mixplex/  
mixmedia



booklet/  
booklet (folding and  
saddle stitching)



offset sorting/  
auto-shift sorting



banner  
printing



## ➔ Technical specifications

### ■ Copier specifications

<b>Copying process</b>	Electrostatic laser copy Tandem, indirect
<b>Toner system</b>	Simitri HD™ polymerised toner
<b>Copy/print speed A4 (mono/colour)</b>	Up to 22/22 cpm (C220) Up to 28/28 cpm (C280) Up to 36/36 cpm (C360)
<b>Copy/print speed A3 (mono/colour)</b>	Up to 12/12 cpm (C220) Up to 17/17 cpm (C280/C360)
<b>Autoduplex speed A4 (mono/colour)</b>	Up to 22/22 cpm (C220) Up to 28/28 cpm (C280) Up to 36/36 cpm (C360)
<b>1st copy/print time (mono/colour)</b>	7.5/11.0 sec. (C220) 5.8/7.7 sec. (C280/C360)
<b>Warm-up time</b>	Approx. 45sec.*
<b>Copy resolution</b>	600 x 600 dpi
<b>Gradation</b>	256 gradations
<b>Multi-copy</b>	1 – 9,999
<b>Original format</b>	A5–A3
<b>Magnification</b>	25–400 % in 0.1 % steps Autozooming
<b>Copy functions</b>	Chapter, cover and page insertion Proof copy (print and screen) Adjustment test print Digital art functions Job setting memory Poster Mode, Image Repeat Overlay, Watermark, Stamping, Card Shot

### ■ Printer specifications (Embedded Emperon Controller)

<b>Print resolution</b>	Equivalent to 1800 x 600 dpi
<b>Controller CPU</b>	MPC8533 @ 667 MHz (C220) MPC8533 @ 1 GHz (C280/C360) 32 BIT
<b>Page description language</b>	PCL6c PostScript 3 (CSPI 3017)
<b>Operating systems</b>	Windows 2000 / XP / XP64 Windows VISTA 32 / 64 Windows DPWS support Macintosh 9.x / 10.x Server 2000 / 2003 / 2003x64 / 2008 / 2008x64 Unix / Linux / Citrix
<b>Printer fonts</b>	80x PCL 137x PostScript 3 Emulation
<b>Print functions</b>	Direct print of PCL, PS, TIFF, XPS, PDF and Encrypted PDF files Mixmedia and Mixplex Job programming "Easy Set" Overlay, Watermark

### ■ Scanner specifications

<b>Scan speed</b>	Colour / Mono up to 70 opm (300 dpi via DF) Colour / Mono up to 40 opm (600 dpi via DF)
<b>Scan resolution</b>	Max.: 600 x 600 dpi
<b>Scan modes</b>	Network TWAIN scan Scan-to-eMail (Scan-to-Me) Scan-to-FTP Scan-to-SMB (Scan-to-Home) Scan-to-Box Scan-to-WebDAV Scan-to-DPWS Scan-to-USB
<b>File formats</b>	JPEG, TIFF, PDF, Compact PDF, Encrypted PDF, Outline PDF, XPS, Compact XPS
<b>Scan destinations</b>	2,100 (single + group), LDAP support

<b>Scan functions</b>	Annotation (text / time / date) for PDF Up to 400 job programs
-----------------------	---

### ■ Fax specifications (optional)

<b>Fax standard</b>	Super G3 (optional)
<b>Fax transmission</b>	Analogue, i-Fax, Colour i-Fax (RFC3949 -C) IP-Fax, SIP-Fax
<b>Fax resolution</b>	Max.: 600 x 600 dpi (ultra-fine)
<b>Fax compression</b>	MH, MR, MMR, JBIG
<b>Fax modem</b>	Up to 33.6 Kbps
<b>Fax destinations</b>	2,100 (single + group)
<b>Fax functions</b>	Polling Time shift PC-Fax Receipt to confidential box Receipt to email, FTP, SMB Up to 400 job programs

### ■ User box specification

<b>Max. user boxes</b>	1,000
<b>Max. storable documents</b>	Up to 3,000 documents or 10,000 pages
<b>Type of user boxes</b>	Public, Personal (with password or authentication), Group (with authentication)
<b>Type of system boxes</b>	Secure print, Encrypted PDF print, Fax receipt, Fax polling
<b>User box functionality</b>	Reprint, combination, download, sending (email, ftp, smb and fax), copy box to box

### ■ System specifications

<b>System memory</b>	2 GB
<b>System hard disc</b>	250 GB
<b>Interface</b>	10 Base-T/100 Base-TX/1000 Base-T Ethernet USB 2.0
<b>Network protocols</b>	TCP/IP (IPv4 / IPv6) IPX/SPX NetBEUI AppleTalk (EtherTalk) SMB LPD IPP SNMP HTTP
<b>Frame types</b>	Ethernet 802.2 Ethernet 802.3 Ethernet II Ethernet SNAP
<b>Automatic document feeder</b>	Up to 100 originals A6–A3 35–210 gsm
<b>Printable paper size</b>	A6–A3 full bleed Customised paper sizes Banner paper max. 1,200 x 297 mm
<b>Printable paper weight</b>	60–271 gsm
<b>Paper input capacity</b>	Standard: 1,150 sheets Max.: 3,650 sheets
<b>Tray 1</b>	500 sheets A5–A3 60–256 gsm
<b>Tray 2</b>	500 sheets A5–A3+ 60–256 gsm
<b>Tray 3 (optional)</b>	500 sheets A5–A3 60–256 gsm
<b>Tray 3 + 4 (optional)</b>	2 x 500 sheets A5–A3 60–256 gsm

## technical specifications, bizhub C220/C280/C360

<b>Large Capacity Cassette</b> (Optional)	2,500 sheets A4 60–256 gsm
<b>Manual Bypass</b>	150 sheets A6–A3+, custom sizes, banner 60–271 gsm
<b>Automatic duplexing</b>	A5–A3 full bleed 64–256 gsm
<b>Finishing modes (optional)</b>	Offset, Group, Sort, Staple, Punch, Centre-fold, Booklet
<b>Output capacity (w. finisher)</b>	max. 3,200 sheets
<b>Output capacity (w/o finisher)</b>	max. 250 sheets
<b>Stapling</b>	50 sheets or 48 sheets + 2 cover sheets (up to 209 gsm)
<b>Stapling output capacity</b>	Max. 1,000 sheets
<b>Booklet (Optional)</b>	15 sheets or 14 sheets + 1 cover sheet (up to 209 gsm)
<b>Booklet output capacity</b>	75 sheets (tray)
<b>Power consumption</b>	220–240 V/50/60 Hz Less than 1.5 KW
<b>System dimensions (W x D x H mm)</b>	643 x 842 x 770
<b>System weight</b>	Approx. 98 kg

### ■ System Features

<b>Security</b>	ISO15408 EAL3 (in evaluation) IP filtering and port blocking SSL2, SSL3 and TSL1.0 network communication IPsec support IEEE 802.1x support User authentication, authentication log Secure Print Hard disk overwrite (8 standard types) Hard disk data encryption (AES 256) Memory data auto deletion Confidential fax receipt Print user data encryption Copy Guard and Password Copy optional
<b>Accounting</b>	Up to 1,000 User Accounts Active Directory support (user name + password + email + smb folder) User function access definition Biometric Authentication (finger vein) optional IC-Card Authentication (IC-Card reader) optional
<b>Software</b>	PageScope Net Care Device Manger PageScope Data Administrator PageScope Box Operator PageScope Direct Print Print Status Notifier Driver Packaging Utility Log Management Utility





KONICA MINOLTA

**Simitri HD**  
High Definition Polymerised Toner



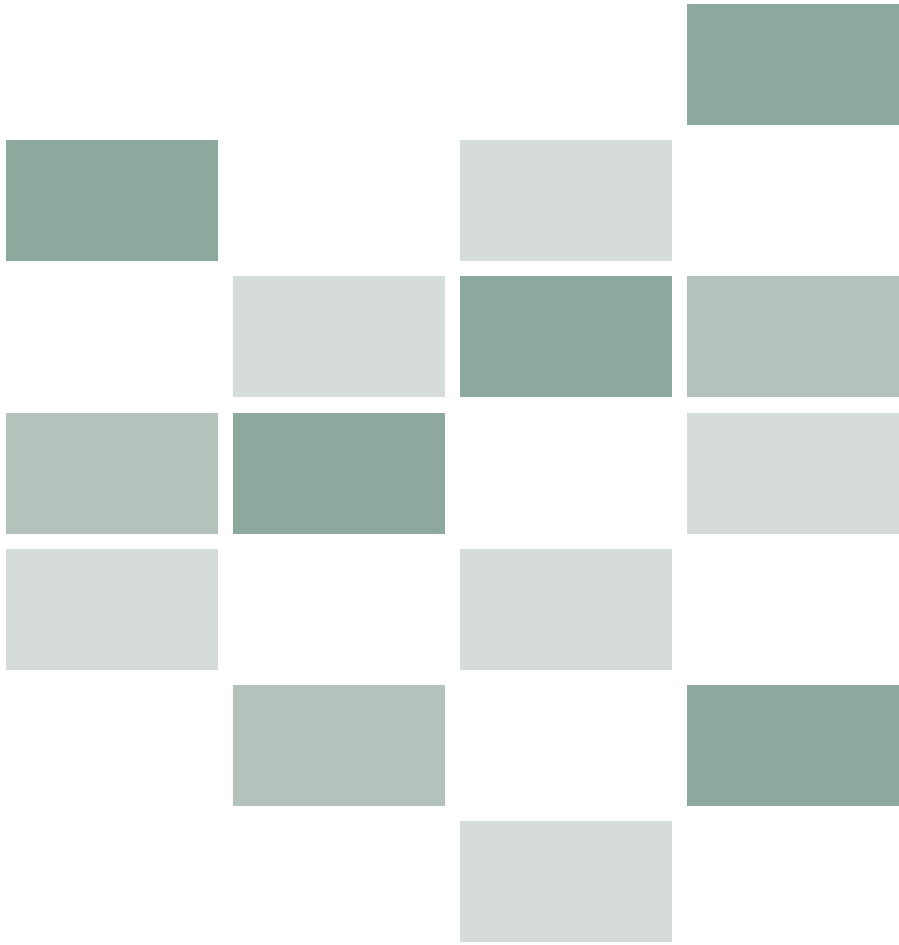
**CITRIX**



**SAP**® Printer Vendor Solution



**Konica Minolta  
Business Solutions (UK) Ltd**  
Precedent Drive, Rooksley  
Milton Keynes MK13 8HF  
Tel: 01908 200400  
Email: [info@konicaminolta.co.uk](mailto:info@konicaminolta.co.uk)



- All specifications relating to paper capacity refer to A4-size paper of 80 gsm quality.
- All specifications relating to scanning, copying or printing speeds refer to A4-size paper that is scanned, copied or printed crosswise in multipage, simplex mode.
- The support and availability of the listed specifications and functionalities varies depending on operating systems, applications, network protocols as well as network and system configurations.
- The stated life expectancy of each consumable is based on specific operating conditions such as page coverage for a particular page size (5 % coverage of A4). The actual consumables life will vary depending on the use and other printing variables including page coverage, page size, media type, continuous or intermittent printing, ambient temperature and humidity.
- Some of the product illustrations contain optional accessories.
- Specifications and accessories are based on the information available at the time of printing and are subject to change without notice.
- Konica Minolta does not warrant that any prices or specifications mentioned will be error-free.
- Microsoft, Windows and the Windows logo are trademarks, or registered trademarks, of Microsoft Corporation in the United States and/or other countries.
- All other brand and product names may be registered trademarks or trademarks of their respective holders and are hereby acknowledged.
- SAP and all SAP logos are trademarks or registered trademarks of SAP AG in Germany and in several other countries

Printed in the UK on Aleo 80 Silk, a paper containing a minimum of 60% post consumer recycled fibre & 20% pre-consumer recycled fibre



When you have finished with this brochure please recycle it

**80% recycled**

This brochure is printed on 80% recycled paper



Your Konica Minolta Business Solutions Partner:

