



KONICA MINOLTA

bizhub **C754/C654**

THE FUTURE OF BUSINESS INFORMATION



INFO-PALETTE DESIGN:

A WIDER BANDWIDTH OF INFORMATION
TO SPEED YOUR WORKFLOW.

bizhub C754/C654 – the first MFPs with INFO-palette design. Color MFPs that can do more, in general business as well as specialized legal, educational and healthcare applications. Accessing more sources of information while protecting client, student and patient confidentiality. Communicating more effectively, in more directions – even on the go. Sharing information with greater speed and security. Improving your image quality. Increasing your output while reducing your cost. And helping you protect the environment more effectively. Welcome to the future of business information – where multifunctional productivity rises to meet 21st-century challenges.



INFO-Palette design incorporates greater convenience for every employee. The screen tilts from 23° to 55° for Section 508 compliance. A 2-way keypad combines both software and hardware controls for fast, user-friendly operation. Hard keys provide touch-sensitive control, with the option to add an external keyboard for more flexible command input.



The new look and feel of INFO-Palette design.

It starts with the broad design strip at the front of your bizhub C754/C654. Information you need is visible at a glance, from any angle. A big, bright 9" color touch screen opens a new window on your workflow, with enhanced resolution for previewing color documents before you print.

Your fingers brush across the screen in an intuitive "touch & swipe" interface that works as easily as today's fastest mobile devices. On the screen, you'll see pop-up windows to prompt your next steps. Simplified menus reduce the number of steps in every command sequence. And icons can be customized to reflect the operations you use most often.

You'll also have access to downloadable apps* – applications linking your bizhub MFP to on-board utilities and web-based software that help you work faster and smarter. A growing array of apps will make your bizhub the portal to future productivity.



Wireless and Bluetooth printing from mobile phones, and printing from or saving to USB flash drives for greater convenience and versatility.

Proven expertise in fast-changing professional applications.

In business offices large and small, the speed and power of bizhub document solutions raise the bar in print/copy/scan convenience. For specialized markets, the bizhub C754/C654 add important functions and security enhancements for working professionals while protecting sensitive information. And the PageScope® Mobile App enables busy professionals to print from smartphones and other portables directly to networked bizhub devices.

The bizhub C754/C654 can produce customized, full-color content in-house and on-demand, saving time and money. Tab printing makes it easy to create binders. Built-in technology enables your bizhub to identify users and restrict access. Enhanced security protects sensitive information – and each bizhub device also integrates with industry-standard cost-recovery programs.

For professional applications like healthcare, high-speed scanning, scan-to-folder capability and seamless integration with industry-standard software for scanning and converting records to electronic form – and meet legal confidentiality or HIPAA requirements by offering the ability to create audit trails and logs of all documents scanned, printed, copied or faxed.

* Not available at time of launch.

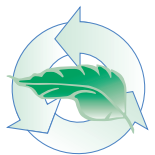


Cost-effective innovations to protect the environment.

Along with proven expertise in serving business and professional document needs, Konica Minolta continuously introduces new ways to save energy, reduce paper consumption, minimize pollutants and protect the environment.

The bizhub C754/C654 achieve among the lowest power consumption rates in their class – even lower than the standard specified by Energy Star certification. Their INFO-Palette design features a unique Eco-indicator that enables you to monitor paper, toner and energy usage by device, account or end-user to promote greater cost-consciousness. An Optimize Power Consumption mode can automatically set correct on/off/standby status for workdays, weekends and holidays,

In action, you'll have even more ways to save. A Print Preview Driver lets you preview documents before you print, reducing the chance of misprints. Blank Paper Removal during copying and scanning saves more paper. Konica Minolta's exclusive Simitri® HD toner formulation uses biomass plant-based materials to reduce environmental impact and fuses to paper at lower temperatures to reduce power consumption.



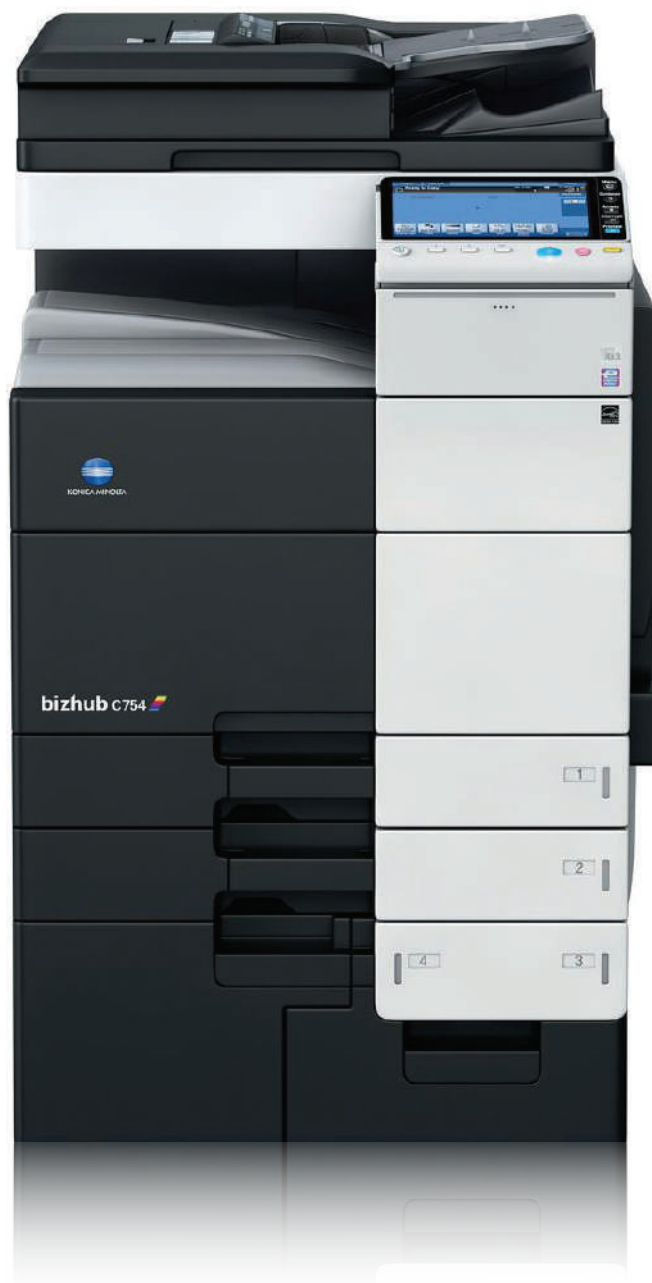
Our Clean Planet program provides cost-free recycling for all your Konica Minolta consumables, including toner cartridges and bottles, imaging units, developer and drums. And our Eco Vision 2050

project is committed to reducing CO₂ emissions by 80% over 2005 levels – eliminating greenhouse gases that may contribute to global warming.

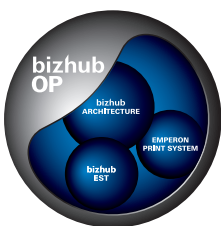
These and other innovations have earned Konica Minolta a place in the 2011 "Global 100" list of most sustainable corporations by Corporate Knights, the magazine for clean capitalism.



GLOBAL100



Orange, blue and white LEDs are easier to see for the vision-impaired. There's even an optional Voice Guidance system to provide audible control instructions.



Konica Minolta technology advances the state of the art – with innovations like bizhub OP design, Open API functionality, the exclusive Emperon print system, bEST software integration, and Simitri HD toner with biomass to protect the environment.



Simitri
with Biomass

BIZHUB COLOR:

FAST PRINTING AND SCANNING WITH MORE COMMUNICATIONS IMPACT

For high-volume document applications and self-service central reproduction departments (CRDs), bizhub C754 & C654 get the job done faster and better. Fast output speeds handle rising workloads with ease. Standard Dual Scanning gives you an ideal on-ramp for information, including legal, educational and healthcare applications where documents must be converted to electronic records. Powerful finishing options let you produce in-house, on-demand reports, presentations, case files, course content, health information and direct-mail marketing materials. And in every document you print, spectacular high-impact color helps keep you ahead of the competition.

The power of bizhub OP – plus the beauty of Simitri HD color.

With bizhub OP (Open Platform) technology, Konica Minolta creates document solutions with an ideal balance of power and simplicity. Fast internal processing with a consistent control interface makes even first-time users more productive. The built-in Emperon® print system gives you immediate PCL6/PS3 emulation and native XPS functionality. Universal printer drivers let you manage printing with standard familiar commands. And bizhub Extended Solution Technology (bEST) provides seamless interface with 3rd-party software for business and professional applications.

Spectacular color quality is an equally essential benefit of the bizhub C754/C654. Konica Minolta's exclusive Simitri® HD polymerized toner creates rich, vivid, high-impact color pages with brilliant full-color photos and graphics. True 1200 dpi print resolution improves halftone definition and makes text more legible. Built-in PostScript 3 emulation features a more versatile ICC Profile for specialized or detailed color settings. New color conversion imaging and a scanner with enhanced dynamic range reproduce more consistent dark colors and light greens.

For long-running consistency, industry-leading image stabilization technology delivers consistent output, first to final print – and Intelligent Auto Exposure effectively detects and preserves faint thin lines and pale backgrounds. The overall result? Color to rival the quality of output devices costing far more, with simple setup procedures that save time and minimize the need for special training.

High-speed print performance makes you more productive.

Color printing doesn't compromise your productivity, because the bizhub C754 and C654 are built for speed. Print/copy output up to 60 ppm color, 75 ppm B&W (C754) and 60 ppm color, 65 ppm B&W (C654) can handle even late-afternoon peak demands. High-speed scanning at up to 180 originals per minute brings more information into your workflow – and faster warm-up and first-copy times avoid long waits to begin work.

Along with faster output, you'll have new print functions for greater versatility – including MS SharePoint Server connectivity, wireless and Bluetooth printing from mobile phones, and printing from or saving to flash-memory devices via a convenient USB connector. You can take advantage of cloud services* for off-site storage of documents and programs. MS Office Open XML Support lets you print Office 2007 file formats (docx, slxs, pptx) via USB and Direct Print.

You can save time with carbon copy printing, outputting the same data continuously from multiple paper trays on different paper types and colors. With "Single Sign-On" and Active Directory Authentication, your bizhub MFP can be accessed without re-entering your password if authentication was performed at the server when your PC was booted. The engine, fusing unit and transfer unit of the bizhub C754 and C654 have also been redesigned for longer life. And there's an accessible paper path with more visible parts to improve ease of servicing.

Print output in more paper sizes and weights.

Because in-house printing requirements keep changing, the bizhub C754/C654 can accommodate a wide range of paper sizes and weights – even reproduce 11" x 17" originals on oversized sheets to preserve margins and crop marks. For producing human resource packets, legal or educational binders and training or instruction manuals, Tab Printing support lets you print tabbed pages from the multiple bypass tray – even use interleave function to insert tabs within the body of your document.

Four standard paper drawers and manual bypass give you 3,650-sheet capacity. Add the LU-301 Large Capacity Unit, and you can load up to 6,650 sheets for long unattended print/copy runs. Standard 100% duplex productivity at rated engine speed improves productivity to meet tight deadlines. And built-in technology allows you to identify print users, restrict or limit access, and control print/copy costs more effectively.

Modular finishing options for in-house productivity.

With bizhub C754/C654, you'll be able to customize a document solution for every need. The FS-535 Staple Finisher performs 100-sheet 3-position stapling, custom sorting and grouping. It accepts the SD-512 Saddle-Stitch Unit, to produce booklets up to 80 pages (20 sheets) or create center-fold, half-fold and tri-fold documents. It also accepts the PK-521 Punch Kit for 2/3-hole punching at top or side, the ZU-606 Z-fold unit, and the PI-505 Post-Insertor to add preprinted covers or chapter dividers.

The compact FS-534 Staple Finisher performs 50-sheet stapling and sorting. It accepts the SD-511 Saddle-Stitch Unit for creating up to 80-page booklets and the PK-520 2/3-Hole Punch Kit. For smaller workgroups, branch locations or satellite offices, the OT-503 outputs documents when a finisher is not required.



The compact FS-534 Staple Finisher performs 50-sheet stapling and sorting. It accepts the SD-511 Saddle-Stitch Unit for creating up to 80-page booklets and the PK-520 2/3-Hole Punch Kit.



Scanning solutions to streamline your workflow.

Along with Standard Dual Scan function that scans both sides of the page in a single pass, the bizhub C754 and bizhub C654 offer an unsurpassed array of scanning features and benefits to bring information into your workflow with greater speed and flexibility.

You can scan directly to Email, FTP, and SMB with simple commands on your bizhub touch-screen panel. User Boxes let you scan and distribute quickly to individuals, departments, workgroups, even projects. Scan-to-PowerPoint converts hard-copy documents to PowerPoint files. Scan-to-Me and Scan-to-Home capabilities add to your convenience and confidentiality. Scanned data can be sent seamlessly to cloud services.* TWAIN scanning from PCs provides a smooth interface with legal and other specialized scanning solutions. And with the PageScope Mobile App, you can send scanned data to mobile devices for use on business trips or in the field.

The optional FS-511 Fax Kit can add a high-volume Super G3 fax to your system for all-in-one document productivity. A customized Scan/Fax Destination List speeds distribution by filtering your address searches. You can select from a wide range of scan formats, including PDF, compact PDF, PDF/A, Linearized PDF, TIFF, JPEG, XPS (some formats are options). WebDAV support will simplify management of server files and folders.

And using the new Distributed Scan function that's compatible with Windows 7 Servers, you can automate your scanning workflow by sending documents direct to a "Scan Server" set up to follow your instructions. Once again, the advantage is faster, cheaper, more effective document distribution.



The bizhub C754 and bizhub C654 offer an unsurpassed array of scanning features and benefits to bring information into your workflow with greater speed and flexibility.

* Not available at time of launch.

BIZHUB INTEGRATION:

APPS, OPTIONS, SECURITY AND ALL THE SOFTWARE YOU NEED

With bizhub C754 and C654, you'll have multiple options to handle current needs and future opportunities. You can download apps* directly to your bizhub. Select i-Options to expand your productivity. Enhance security to protect your sensitive information. Add industry-leading Fiery color control capabilities for graphics-intensive applications. Take advantage of a full suite of PageScope utilities to manage your documents and devices. And integrate seamlessly with a growing array of Konica Minolta and 3rd-party business software solutions that give you the capability of variable-data mailing, account tracking, cost recovery, and industry-standard programs for healthcare, education, law and other specialized applications.



Downloadable apps provide a new dimension in multifunctional productivity. Each app has its own special purpose. All are designed for speed and convenience from your control panel.

Apps* & i-Options: a new approach to all-in-one productivity.

Introducing the bizhub MarketPlace: your source for downloadable apps that increase the capabilities of bizhub devices, just as mobile service providers and auto companies have added apps to serve their customers. You'll be able to view specialized applications on web-enabled bizhub devices. Scan files directly to Google Mail, Google Docs and SharePoint. Enable bizhub SECURE functions, receive stock quotes, access up-to-the-minute weather reports. Print certificates and paper templates, get corporate messages and more, all on your bizhub control panel at the touch of a button – with more apps coming online every month.

In addition to downloadable apps, i-Option kits increase the power of your bizhub MFP. LK-101 v3 gives you a robust web browser and access to the bizhub MarketPlace. LK-102 v3 combines PDF/A (1a/1b) formatting, linearized PDF, AES 128-bit PDF encryption and a simple Image Panel interface to handle information stored in User Boxes. You can add LK-104 v3 for Voice Guidance operation, LK-105 v3 to create Searchable PDF files and locate specific text references, and LK-106, LK-107 and LK-108 for Bar Code Font, Unicode Font and OCR Font support. With all these customizing choices, your bizhub will be able handle information in any form that suits your workflow.



* Not available at time of launch and options required.

**Anticipated CAC/PIV availability summer 2012.



The bizhub C754 & C654 offer a full array of standard safeguards as well as advanced options like Biometric Authentication, HID Proximity Cards, and other powerful options to guard your bizhub from unauthorized use.

Security to protect all your documents and devices.

In the digital era, electronic documents require additional security. Government, healthcare and legal applications must meet the highest standards in protecting the rights of citizens and the privacy of patients and clients. Educational institutions must safeguard student confidentiality and restrict access to customized course content.

To meet or exceed these needs, both the bizhub C754 and C654 are currently in evaluation to meet strict ISO 15408 security standards – and offer a full array of standard safeguards as well as advanced options like Biometric Authentication, HID Proximity Cards, HID iClass Cards and Magnetic Stripe Cards, and CAC/PIV Card support.**

Restricting access to print/copy devices is another key concern. With bizhub SECURE, your service provider can initiate a powerful level of extra protection to guard your bizhub from unauthorized operation. Encrypted PDF workflow protects information passing from PCs to networked bizhub devices. IP filtering registers IP addresses of the PCs on your network. And PageScope Enterprise Suite provides server-based authentication and account tracking, so you'll know when prints or copies were made and who made them.

An optional Copy Guard system requires password access to make copies. HDD Lock applies password protection to your bizhub hard disk drive. Job Erase function automatically overwrites your HDD up to three times, meeting the criteria of DoD 5220.22-M (Department of Defense) and NAVSO P-5239-26 (US Navy). And when your bizhub is reassigned to another location or removed from service, HDD Sanitizing can overwrite data in eight different modes so no sensitive information can be compromised.

Optional IC-414 Fiery Image Controller.

For graphics-intensive applications and light production printing needs, there's a Fiery image controller that helps you manage color printing with professional expertise.

The IC-414 incorporates standard Fiery Command Workstation print job management interface, advanced color matching, color calibration and print queue management, Secure Erase, and Fiery WebTools. Standard Fiery VUE software helps you orchestrate all elements into a professional high-impact result – and you'll be able to handle specific PANTONE color requirements, manage print queues more effectively, and fine-tune color output to suit the needs of any job.

Fiery Productivity Package includes ImageViewer, Hot Folder printing with embedded job ticket settings, job setup with finishing options and imposition attributes for drag-and-drop printing. An optional Color Profiler Suite allows you to create customized ICC profiles for your device.

Greater IT control with PageScope software.

In addition to the server-based authentication and account tracking capabilities of PageScope Enterprise Suite, the bizhub C754/C654 include a full array of PageScope software for managing documents and devices.

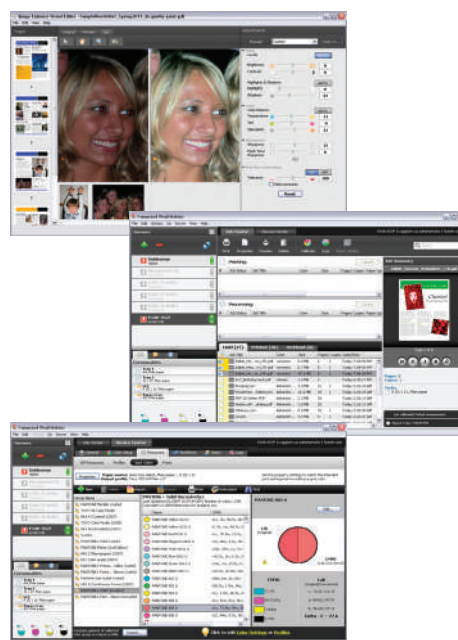
PageScope Web Connection and PageScope Net Care Device Manager enable individual users and IT administrators to manage multiple devices from a single point. PageScope Print Status Notifier provides automatic alerts to speed your workflow. PageScope Data Administrator™ handles addresses, passwords, and accounts with ease – and PageScope Box Operator: download and access scanned User Box data from your PC.

bEST design for seamless 3rd-party software integration.

With INFO-Palette design, the bizhub C754/C654 represent a breakthrough in MFP value and performance. PageScope software expands the range of bizhub functions. To complete the picture, Konica Minolta's bizhub Extended Software Technology (bEST) allows seamless integration with software programs from Konica Minolta and 3rd-party developers – software that speeds business workflow, manages print production, performs account tracking and cost-recovery, create direct-mail promotions and more.

Your bizhub can handle a wide range of software for general business as well as specialized legal, educational and healthcare environments. For a complete list, please visit our website: <http://kmbs.konicaminolta.us>.

With standard EFI Command Workstation functionality, the Fiery IC-414 image controller lets you handle specific PANTONE color requirements, manage print queues, and fine-tune color output to suit the needs of any job.



COUNT ON KONICA MINOLTA

Konica Minolta: count on an industry leader. Konica Minolta Business Solutions U.S.A., Inc., is a leader in advanced document management technologies and managed IT services. Our product line spans desktop to print shop – and we've introduced the industry's most complete line of document imaging solutions in both color and B&W. With over 37,000 worldwide employees and cutting-edge research programs in optical and digital technology, we're proud of our record of achievement. In 2011, for the fourth straight year, Konica Minolta has been recognized as the #1 Brand for Customer Loyalty in the MFP Office Copier Market by Brand Keys. Konica Minolta has also been listed among the Brand Keys top 100 Brand Loyalty Leaders – the only copier company to be ranked among the top 100 brands.

bizhub C754/C654

FULL COLOR PRINTER/COPIER/SCANNER/FAX



bizhub C754



bizhub C654

SPECIFICATIONS

Type	Full-Color Printer/Copier/Scanner with Stationary Platen	
Toner System / Print Method	Simitri® HD Toner with Biomass / Tandem Process	
Monthly Duty Cycle (pages)	278,000 pages	250,000 pages
Print / Copy Speed (Letter, portrait)	Full Color: 60 ppm, B&W: 75 ppm	Full Color: 60 ppm, B&W: 65 ppm
Dual Scanner Document Feeder	Full Color/B&W Duplex Speed: 180 opm, Full Color/B&W Simplex Speed: 90 opm, Paper Capacity: 150 Sheets, Paper Size: 5.5" x 8.5" to 11" x 17", Paper Weight: Single-Sided/Double-Sided: 9.25 lb. bond to 55.75 lb. bond, Mixed Original: 13.5 lb. bond to 34 lb. bond	
Power Requirements / Consumption	120V, 60Hz / Less than 2,100W	
Dimensions / Weight	25.5" (W) x 31.5" (D) x 45.5" (H) (with control panel) / 487.25 lb.	

COPY

Warm-up Time / First Copy Time	Less than 22 seconds / Full Color: 5.3 seconds or less, B&W: 3.6 seconds or less	Less than 22 seconds / Full Color: 5.3 seconds or less, B&W: 3.7 seconds or less
Copy Resolution / Quantity	600 x 600 dpi / 1-9,999	
Magnification	Zoom range: 25% - 400%, 0.1% increments, Preset reduction: 78.5%, 73.3%, 64.7%, 50.0%, Preset enlargement: 121.4%, 129.4%, 154.5%, 200%	
Copy Exposure Modes	Text (legible text), Text/Photo (clear text and halftones), Photo (optimized for gradations), Map (fine edges and legible text), Dot Matrix (dot matrix or pencil originals), Copied Paper	

PRINT: Emperon Print System with bizhub Extended Solution Technology / Open API

Processor / Memory / Hard Disk Drive	1.2 GHz (MPC8536) / 2 GB (shared copier memory) / 250 GB (shared copier HDD)
Print Resolution / Grayscale Gradations	1800 dpi (equivalent) x 600 dpi or 1200 x 1200 dpi / 256 shades per pixel
Page Description Language / Fonts	PCL5e/c, PCL6 (XL v.3.0) Emulation, PS3 (v.3016) Emulation, XPS (XML Paper Specification); PCL: 80 Roman fonts, PostScript 3 Emulation: 137 Roman fonts
Operating System Compatibility	PCL6/PS3: Windows XP Home (SP1), Windows XP Professional (SP1)*, Windows Vista*, Windows 7**, Windows Server 2003 Standard/Enterprise*, Windows Server 2003 Standard/Enterprise R2*, Windows Server 2008 Standard/Enterprise*, Window Server 2008 Standard/Enterprise R2; XPS: Windows Vista*, Windows 7**, Window Server 2008 Standard/Enterprise*, Window Server 2008 Standard/Enterprise R2; Mac (PS-PPD): OS 9.2, OS X 10.2.8 to 10.7
Interface	10 Base-T/100 Base-TX/1000 Base-T, USB 1.1, USB 2.0, USB Host
Network Protocols	TCP/IP (IPv4/IPv6), BOOTP, ARP, ICMP, DHCP, DHCP v6, AutoIP, SLP, SNMP, FTP, LPR/LPD, RAW Socket, SMB, IPP, HTTP, POP, SMTP, LDAP, NTP, SSL, IPX, AppleTalk, Bonjour, NetBEUI, WebDAV, DPWS, S/MIME, IPsec, DNS, DynamicDNS, LLNMR, LLTD, SSDP, SOAP

COPY / PRINT FUNCTIONS

Features	Account Track (1,000 accounts), Administration Mode, Auto Duplex, Auto Tray Switching, Bi-Directional Communication, Black Over Print, Card Shot, Color Modes & Functions (Auto Color/Full Color, Black & White Mode, Single Color Mode, 2-Color Mode, Color Adjustments, Copy Guard, Copy Modes (Simplex/Duplex, 2-in-1, 4-in-1, 8-in-1, Book, Booklet, Booklet + Bind), Cover Mode, Creative Functions (Mirror Image, XY Zoom, Image Center, Base Color, Neg./Pos. Reverse, Image Repeat), Encrypted Network Password Printing, Energy Save Mode, Enlarge Display, Erase (Border, Frame, Edge) Mode, Finishing (Group, Sort, Staple, Punch, Half-Fold, Tri-Fold, Center Staple and Fold, Z-Fold*, Post Insertion*), Form Overlay, Glossy Mode, HDD Encryption, HDD Job Overwrite, HDD Sanitizing, Image Adjustments (Color Matching, Pure Black Auto ON/OFF, Color Balance, Screen Settings, Image Smoothing ON/OFF), Image Preview (Job Finishing Image Display, Engine Configuration Display), Interrupt, Job List, Job Reserve, Job Skip, LDAP, Mixplex, Mix-Media, MyTab, Non-Image Area Erase, OHP Interleaving, Password Copy, Program/Recall Jobs, Paper Type Selection (Normal, Thick 1/1+, Thick 2, Thick 3, Thick 4), Print Modes (Simplex/Duplex, 2-in-1, 4-in-1, 6-in-1, 9-in-1, 16-in-1, Booklet, Booklet + Bind), Print from USB, Proof Copy, Secure Printing, Separate Scan, Tab Printing, Text Enhancement, User Authentication (Up to 20 Authentication Servers) (Synchronize w/Account Track), User Box Function, Utility (Meter Count, Environment Settings, Default Settings, One-Touch Settings, Check Consumable Life), Watermark, Zoom Selection
----------	---

SCAN

Scan Speed / Resolution	Duplex Scan (Full Color/B&W): 180 opm @ 400 dpi; Simplex Scan (Full Color/B&W): 90 opm @ 400 dpi / 200 dpi, 300 dpi, 400 dpi, 600 dpi
Scan File Formats / Color Modes	TIFF, PDF, Compact PDF, JPEG, XPS, Compact XPS, PPTX / Auto Color, Full Color, Black & White, 2-Color, Single Color
Scan Functions	Scan-to-Email, Scan-to-FTP, Scan-to-HDD (Scan-to-User Box), Scan-to-Me/Scan-to-Home, Scan-to-SMB (Scan-to-Desktop), Scan-to-USB, Scan-to-WebDAV, Distributed Scan Management, Network TWAIN, WS-Scan, Color Internet Fax

• FK-511 FAX KIT (OPTIONAL)

Compatibility / Compression	Super G3 compatibility, 33.6 Kbps modem speed / MH, MR, MMR, JBIG data compression
Fax Transmission Speed / Fax Memory	Less than 3 seconds per page (JBIG, standard resolution) / 2 GB (shared print, copy, scan, fax memory)
Fax Line Mode / Fax Exposure Mode	PS/TN, PBX, G3 / Text, Text/Photo, Photo, Dot Matrix
Fax Functions	Autodialing (2,000 addresses), Auto Memory Reception, Auto Reduction Printing, Broadcasting (maximum 600 locations), Bulletin Board, Duplex Transmission/Reception, F-Code Support, Group Dialing (up to 500 addresses per group / up to 100 groups), Mailbox Transmission/Reception, Memory/Quick Dial, Overseas Transmission, Password Transmission/Reception, PC-Fax, Polling Transmission/Reception, Print Setting or Overnight Dialing (400 programs), Redial, Relay Transmission, Timer Transmission, TSI Routing
Fax Options	Spare TX-Marker Stamp 2, SP-501 Fax Stamp Unit

PAPER HANDLING

Original Size	Up to 11" x 17" (scanning/copying), Up to 11" x 17" full bleed on 12" x 18" paper (printing)
Paper Trays	Tray 1 & 2: 500-sheet (universal cassette)/5.5" x 8.5" to 12" x 18"/14 lb. bond to 140 lb. index; Tray 3: 1,500-sheet (fixed cassette)/8.5" x 11", 5.5" x 8.5", 4" x 6"/14 lb. bond to 140 lb. index; Tray 4: 1,000-sheet (fixed cassette)/8.5" x 11", 5.5" x 8.5", 4" x 6"/14 lb. bond to 140 lb. index; Bypass Tray: 150-sheet bypass/4" x 6" to 12" x 18", 8" x 13"/Banner Paper/ 14 lb. bond to 100 lb. cover up to 300 gsm
• LU-204 Large Capacity Unit	2,500-sheets/8.5" x 11", 8.5" x 14", 11" x 17", 12" x 18"/16 lb. bond to 140 lb. index
• LU-301 Large Capacity Unit	3,000-sheets/8.5" x 11"/16 lb. bond to 140 lb. index
Maximum Paper Capacity	6,650 sheets (total, with options)

APPLICATIONS

Network & Device Management	PageScope Data Administrator, Driver Packaging Utility, HDD Back-Up Utility, Download Manager (ICC Color Profile Utility), Log Management Utility
User Tools	PageScope Web Connection, PageScope Direct Print, PageScope Box Operator, PageScope Print Status Notifier, Font Management Utility, Copy Protect Utility, Print Utility for Unix
Management Tools	bizhub vCare support
• PageScope Enterprise Suite	PageScope Account Manager, PageScope Authentication Manager, PageScope MyPrint Manager, PageScope MyPanel Manager, PageScope Net Care Device Manager (standard)

• ADDITIONAL OPTIONS

• Authentication / Security Options	AU-102 Biometric Authentication Unit, AU-201H HID Proximity Card Authentication Unit, AU-202H HID iClass Card Authentication Unit, AU-204H Magnetic Stripe Card Reader, AU-211P CAC/PIV Solution***, SC-508 Copy Guard Kit, WT-506 Working Table to support Authentication Devices, MK-735 Internal Mount Kit
• External Keyboard	KH-102 Keyboard Mount Kit, EK-604 USB Interface for External Keyboard and Voice Guidance, EK-605 USB Interface for External Keyboard, Bluetooth Support and Voice Guidance
• i-Option	LK-101 v3 i-Option, LK-102 v3 i-Option, LK-104 v3 i-Option, LK-105 v3 i-Option, LK-106 i-Option, LK-107 i-Option, LK-108 i-Option, UK-204 i-Option Memory Upgrade Kit
• Finishing	FS-535 100-Sheet Staple Finisher, FS-534 50-Sheet Staple Finisher, JS-602 Job Separator Tray (FS-535), OT-503 Output Tray (Exit Tray), PI-505 Post Insertor† (FS-535), PK-520 Punch Kit (FS-534), PK-521 Punch Kit (FS-535), SD-511 Saddle Stitcher Kit (FS-534), SD-512 Saddle Stitcher Kit (FS-535), ZU-606 Z-Fold Unit† (FS-535)

• FIERY IC-414 EMBEDDED IMAGE CONTROLLER (OPTIONAL)

Processor / Memory / Hard Disk Drive	Intel Pentium E5300 2.6 GHz / 2 GB (standard/max) / 160 GB HDD
Page Description Language / Fonts	PCL5, PCL6, Adobe PostScript 3 (version 3019) / PCL: 80 fonts, Adobe PS3: 138 fonts
Operating System Compatibility	PCL6, PS3: Windows XP*, Windows Vista*, Windows 7*, Windows Server 2003, Windows Server 2008*, Mac: OS X 10.4.x; Intel-based: 10.4.x (print driver), 10.5.x, 10.6.x; Unix/Linux 10 Base-T/100 Base-TX/1000 Base-T, USB 1.1, USB 2.0 / TCP/IP, IPX/SPX, AppleTalk (EtherTalk), LPR, SMB, LPD, Network (5.x, 6.x), Pserver, Nprinter, NDPS, IPP, SMTP/POP3, LDAP, SSL/TLS, SNMP, HTTP/HTTPS, IPv6, DPWS (WSD)
Standard Software	Fiery Command Workstation, ColorWise Tools, Fiery Spot-On™, Fiery WebTools, Fiery VUE, Secure Erase
Optional Software / Hardware	Fiery Productivity Package, Hot Folders/Virtual Printers, Auto Trapping, SeeQuence Impose, SeeQuence Compose, Impose+Compose Suite, Color Profiler Suite v3.1 UV, Fiery Color Profiler Suite v3.1 (software only), ES-1000 Spectrophotometer / VI-506 Video Interface Kit for IC-414

● OPTIONAL ● STANDARD

*Both 32-bit and 64-bit versions supported. **Windows 7 Home Basic Edition supports 32-bit only.
†ZU-606 and PI-505 only available for FS-535. ***Anticipated availability summer 2012.



KONICA MINOLTA

KONICA MINOLTA BUSINESS SOLUTIONS U.S.A., INC.

100 Williams Drive
Ramsey, NJ 07446

www.CountOnKonicaMinolta.com
www.kmbs.konicaminolta.us

Konica Minolta Optimized Print Services offers a full suite of device output services and workflow solutions that increase efficiency and control costs.
Please contact your authorized Konica Minolta sales representative for details.

© 2012 KONICA MINOLTA BUSINESS SOLUTIONS U.S.A., INC. All rights reserved. Reproduction in whole or in part without written permission is prohibited. Konica Minolta is a registered trademark of KONICA MINOLTA HOLDINGS, INC. bizhub and PageScope are trademarks of KONICA MINOLTA BUSINESS TECHNOLOGIES, INC. All other brands and product names are registered trademarks or trademarks of their respective owners.

