



KONICA MINOLTA

# bizhub PRESS C1070/C1070P/C1060

FOR A NEW GENERATION OF DIGITAL PRODUCTION DEMANDS

# PUT COLOR TO WORK

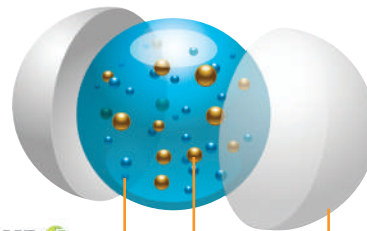


# bizhub PRESS:

COLOR PRODUCTION WITH SUPERIOR QUALITY AT AFFORDABLE COST

**T**he world of production print is changing. Hard-to-please customers demand superior color image quality. Tight deadlines require faster turnaround times. Profitable operation depends on streamlined workflow, online job submission, and production automation – in equipment you can count on for maximum uptime, with built-in protection for the environment. For all these reasons, print professionals count on Konica Minolta bizhub PRESS: proven color solutions for a new generation of digital production demands.

**Simitri HD<sup>E</sup> Toner:** Konica Minolta's exclusive Simitri HD<sup>E</sup> toner formulation uses smaller and more consistent particles and an ultra-thin core shell allows toner particles to fuse more quickly.



Simitri HD<sup>E</sup>

Wax

Pigment

Ultra-Thin Film Core Shell

**Speed, stamina, spectacular color – now you'll have it all.**

With these next-generation bizhub PRESS models, Konica Minolta takes another step forward in digital color production. A redesigned print engine offers high-quality production color with rugged, cost-effective performance. Superior color imaging achieves near-offset quality with simple setup and precise stability over long press runs. And expanded paper-handling, in-line finishing and image control capabilities boost your output power while simplifying operation to reduce your labor costs.

With up to 70 ppm print/copy color output, plus fast scanning and powerful job handling features, the bizhub PRESS C1070 delivers brilliant, high-resolution images ideal for production, commercial, and print-for-pay applications. The bizhub PRESS C1070P gives you print-only performance with the same 70 ppm speed and superior image quality. And the bizhub PRESS C1060 provides up to 60 ppm print/copy output for real value in light production and high-volume corporate needs.

Whichever model you choose, you'll have a purpose-built professional in a powerful iron box-type chassis with long-lasting parts and high-yield consumables – all in a flat, square cabinet with heavy-duty metal paper trays and a much smaller overall footprint to save space on your production floor.

You'll also be able to customize a right-size solution for your needs – with scalable finishing options for producing full color flyers and brochures, reports and presentations with tri-fold spreadsheet pages, saddle-stitch booklets or perfect-bound books, and GBC hole-punched or in-line ring-bound training manuals and educational or human resource packages. And you'll have streamlined digital workflow with web-based job submission to get the job done better for general business, as well as healthcare, legal, educational and other specialized applications.



**Color technology for quality and stability, first to final print.**

To appreciate the extraordinary color image quality of these bizhub PRESS professionals, consider two key Konica Minolta advantages: exclusive Simitri HD<sup>F</sup> polymerized toner, and our next-generation SEAD IV digital processing system.

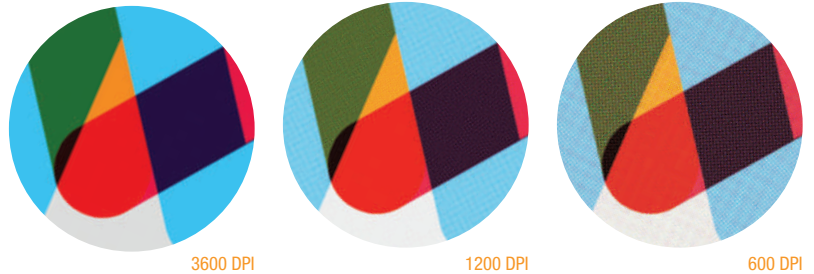
Simitri HD<sup>F</sup> toner features a new 3-dimensional hybrid polymer structure to fuse to paper surfaces at lower temperatures and adhere more precisely to rough paper surfaces for beautiful, natural luster on both glossy and matte stock. It also incorporates improved magenta pigment for superior reproduction of red hues, 10% higher overall percentage of pigment for superior quality in solid color areas, and enhanced electro-photographic properties to reproduce halftone photos and skin tones more faithfully in both color and B&W.

Screen-Enhancing Active Digital (SEAD IV) processing combines highly accurate laser exposure controls, ultra-fine Dot Position Control (DPC) pixel placement, and multi-bit screening to achieve resolution equivalent to 3,600 dpi. The result is visible in every job you print: smoother edges, greater legibility in fine text, and maximum color density without granularity or moiré distortion. Sophisticated ASIC (Application-Specific Integrated Circuit) technology retains high-level image quality with fully digital control, for stability you can count on through long color press runs.

And there's more: adjustable outline processing and image smoothing control to fine-tune your output depending on the needs of each original, a sophisticated shift mechanism to increase front-to-back registration accuracy, an enhanced color output feedback system that measures both CMYK and RGB color – even more accurate color feedback when your job calls for the use of an external spectrophotometer.

To keep you in full production at times of peak demand, all three bizhub PRESS models incorporate an improved relay unit (RU-509) for scratch-free imaging at higher output speed even on thick coated stock. A refined OPC Drum performs with increased sensitivity and greater stability in high humidity. And our aluminum die-cast laser unit gives you the state of the art in reliable performance.

**SEAD IV and DPC:**  
With Dot Position Control individual pixels of 1200 dpi are processed three times, reaching a highly stable equivalent of 3600 dpi – giving your images smoother edges and superb color density without moirés or distortion.



**Green technologies to help reduce your environmental impact.**

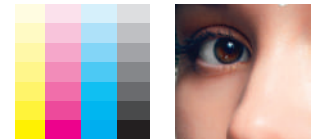
Your production print customers will appreciate an extra degree of environmental responsibility – and Konica Minolta's award-winning green initiatives continue to lead the way. Our exclusive Simitri HD<sup>F</sup> toner is produced using biomass plant-based materials to minimize environmental impact. Toner fuses to paper at lower temperature, helping minimize the energy requirements of your equipment.



We also bring you the industry's first cost-free recycling program for all your Konica Minolta consumables. Our Clean Planet recycling program is especially valuable in commercial and print-for-pay applications, which can save time and effort by taking advantage of either prepaid shipping labels or our bulk pickup program for high-volume users.

Our manufacturing policies and programs minimize pollutants by evaluating the entire life cycle of every bizhub PRESS. And Konica Minolta continues to have an eye on the future – with Eco Vision 2050, an ambitious corporate-wide effort to reduce CO<sub>2</sub> emissions up to 80% by the midpoint of this century.

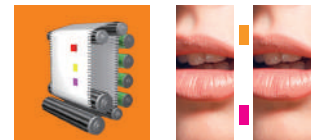
**Color Density Control:**  
The CDC sensor reads printed color values to reproduce hues and skin tones more accurately on any paper stock.



**Outline Character Processing:**  
Reproduces the ideal thicknesses of knock-out type on color backgrounds.



**Image Density Control:**  
The IDC sensor corrects halftone density automatically during continuous printing. Offering improved image stability from start to finish in any setup environment.



# FINISHING STRONG:

PRODUCTION POWER TO SATISFY PROFESSIONAL DEMANDS

**T**he new bizhub PRESS C1070/C1060 are designed to work as hard as you do – fulfilling the most complex job specs, meeting the tightest production deadlines, and delivering the high-quality color output that keeps print customers coming back for more. You'll be able to handle a wider range of substrates with smooth-running reliability – using thick coated stock, duplexing on heavy paper and expanded in-line finishing capabilities lets you handle challenging job specs with automated ease.



## In-line and off-line options to meet tight production deadlines.

Comprehensive automated in-line finishing options are designed to give you fast, fail-safe production with minimum operator intervention – in scalable configurations to match all the types of print jobs your customers demand.

For entry-level production systems or corporate and print-for-pay users working in compact spaces, the FS-531 Staple Finisher provides 50-sheet corner or 2-point stapling with advanced stacking alignment. A modular PK-512 Punch Kit adds 2/3-hole punching – and the PI-502 Post Inserter lets you add covers or insert sheets post-process. Also available is the FS-612 Multi-Function Finisher, combining 50-sheet stapling with 80-page saddle-stitch booklet-making, center-fold and letter-fold capabilities, and punch kit and post-inserter options.

Advanced production applications can take advantage of more powerful finishing capabilities. The FS-532 Multi-Function Finisher provides high output speed, multi-position stapling of up to 100 sheets, and 4,500-sheet maximum paper capacity. It can be equipped with the modular SD-510 Saddle-Stitcher, PK-522 2/3-Hole Punch Kit and PI-502 Post Inserter options.

The SD-506 Saddle-Stitcher can increase your saddle-stitched booklet-making capability to 200 pages (50 folded sheets), with a highly accurate stitch-after-folding method that minimizes image shifts and face-trimming function that gives booklets a more professional finish. The FD-503 Multi-Folding Unit can provide 6 folding different patterns, including center fold, letter fold-in, letter fold-out, double parallel fold, Z-fold, and gatefold – plus built-in hole-punch and paper insertion capabilities for all-in-one finishing convenience.

For corporate self-publishing, healthcare and insurance documents, educational materials and training manuals, the PB-503 Perfect Binder option will create perfect-bound, face-trimmed books up to 600 pages, printed and glued in-line without the need for additional 3-way trimming. A handcart for automatic stacking is standard equipment with the PB-503.

To handle a variety of hole-punching configurations, the GP-501 GBC Multi-Punching Unit operates with simple slide-in, slide-out interchangeable die replacement sets. A new GP-502 Ring Binder Unit will enable you to create ring-bound reports and presentations with in-line speed and simplicity. The LS-505 Large Capacity Stacker Unit can load up to 5,000 sheets on a rollaway cart for carrying print output to off-line finishing or shipping locations – and two stacker units can be combined for producing up to 10,000 sheets in a single unattended print run.



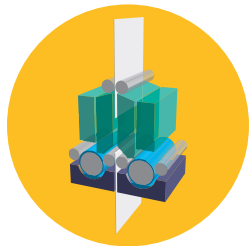


**Advanced paper-feed technology to keep jobs running smoothly.**

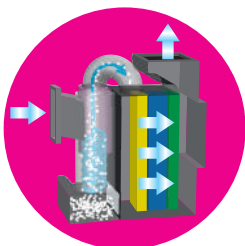
The bizhub PRESS C1070, C1070P and C1060 are all ahead of their class in versatility, flexibility and reliability. They give you 7,500-sheet maximum paper capacity for longer unattended press runs, accept paper sizes up to 13" x 19.2" for oversized color spreads and proofs that retain borders and crop marks, and provide a wider paper path to run stocks up to 300 GSM in both simplex and duplex printing.

Our refined fuser unit strengthens roller pressure, optimizes temperature control and increases airflow for smooth-running performance with both thick and thin substrates. An air-assisted Paper Feeder option (PF-602m) has two variable-speed blowers on the front and back of the paper trays to eliminate paper stick for jam-free uptime. An optional air-suction Paper Feed Unit (PF-707) gives you the additional paper-handling power, previously available only on higher-output devices. And for tighter spaces there is the LU-202 Compact Paper Feed Unit with 2,500-sheet capacity.

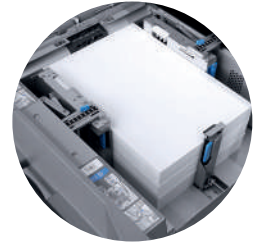
All three models keep work flowing with front-access toner bottle and waste toner box exchange while you print – and an easy-clearing paper path gets you back in action faster in the unlikely event of a jam.



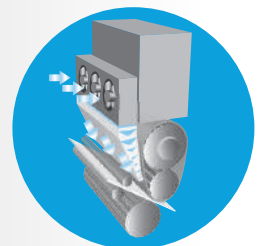
**Hybrid Decurling Mechanism:** Humidifies the paper passage to remove unwanted static electricity and heat from the paper, as well as reduce paper curls and paper cling for highly accurate paper delivery.



**Cyclone Air Suction System:** Features a high-powered dust collector which collects 3 times more toner. Reducing the replacement frequencies of the filter unit to reduce machine downtime.



**PF-707 Air-suction Paper Feed Unit:** Suction type paper feeding can now be selected for the first time for a light production printer, providing the most reliable paper handling in its class.



**Air Blower Paper Separator:** Delivering air prevents the paper from wrapping around the upper fusing belt, thereby improving the reliability of the fusing unit's paper feeding.

# TOTAL CONTROL:

COLOR PRODUCTION MANAGEMENT WITH STREAMLINED EFFICIENCY

**W**ith bizhub PRESS on your production team, you'll have more power to get the job done – with versatile control to make it all look easy.

A large color touch-screen provides hands-on job management without the need for special training. Powerful image control options meet the needs of every print environment, including graphics-intensive applications. Integrated PageScope software and optional Printgroove production automation helps raise your output while lowering your costs – and world-class Konica Minolta service provides the professional support your production deserves.

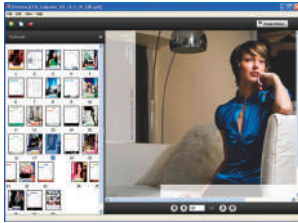


**IC-602 Internal Image Controller:** Offers professional-grade color management and pre-press features with greater automation and operator control.

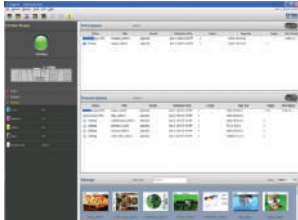
**The 15" LCD touch-screen:** Lets you control job queues, select finishing options, navigate simple menus – and get a large-screen look at thumbnail displays.



**IC-308 External Fiery Image Controller:** State-of-the-art Fiery technology offers versatile functionality, sophisticated color management and workflow automation.



**IC-309 External Creo Image Controller\*:** Offers professional-grade color management and pre-press features with greater automation and operator control.



### Simple onboard operation – plus powerful color control.

Along with their quality, reliability and scalability, all three models provide the ultimate benefit of Konica Minolta digital technology advances: simplicity that speeds operation and reduces the need for specialized training.

A large 15" color LCD touch-panel display incorporates an on-screen user's guide, provides angle adjustment for easy access by all your personnel, and gives you familiar PC-like operation with optional support for a hand-held mouse for point and click control of pull-down menus. You can rotate the mouse wheel to select job parameters, drag and drop to perform job editing functions, and click and grip to adjust tone curve. You'll also have a real-time panel for quick-response remote control operation. A comprehensive paper catalog is available on screen, with information you can load and update via web-based and USB data input.

With full print/copy/scan functionality in both color and B&W, the bizhub PRESS C1070 and C1060 deliver fast, accurate throughput. The DF-626 Auto Document Feeder provides high-speed sheet-through scanning to multiple destinations, including Email, FTP, on standard hard disk drive with expanded memory for onboard document storage.

You can also take advantage of the power and performance of Konica Minolta's custom-designed internal IC-602 Image Controller option. Its fast processing and transfer speeds help keep your print queue moving. You can manage print jobs right from your control panel – making color adjustments and change pagination for RIP-completed jobs, displaying current and reserved jobs for scheduling, sort jobs by a wide range of criteria, edit job tickets and more.

You can also edit page images displayed on your bizhub PRESS control panel, preview inserted images to confirm that settings are correct, and manage print queues, schedule jobs, confirm reserved jobs and more – all the working tools you'll need to maintain maximum productivity at times of peak demand. And with Konica Minolta's AU-201 ID Card Authentication option, you'll be able to control access to every bizhub PRESS device using standard ID card systems.

### Additional control options for every print management need.

The bizhub PRESS C1070, C1070P and C1060 also accept additional image control options with advanced color management and production benefits.

The internal IC-415 Fiery® Image Controller provides a unique combination of power, speed and simplicity for entry-level production and in-house, on-demand corporate printing. The external Fiery IC-308 Image Controller delivers improved performance and upgraded functions, including Fiery Driver 4.0, Command Workstation 5, hot folders, clone tool, job batching, force print, sample printing and more. Both Fiery controllers share a common platform for stable output quality in multi-controller production environments.

The external Creo® IC-309 Print Controller option\* features advanced color profiling and destination profiles to spot colors, a complete Pantone GOE library, color sets and color print sets, an Easy VIPP file creator, advanced perfect binder support, and full integration with Kodak print systems. Office Hot Folder lets you print documents more quickly from remote locations. You'll also have Remote Site Manager status tracking, JDF connectivity, Creo color server and job ticket software, and much more.

### Software to manage documents, devices, print queues and more.



For walk-up printing and print-for-pay applications, the bizhub PRESS C1070, C1070P and C1060 incorporate PageScope Enterprise Suite

software to integrate the management of accounts, authentication and end-user settings at each user's control panel. You can use PageScope Web Connection to check device status from your browser. PageScope Direct Print lets you quickly put PDF or TIFF files into production without going through print drivers.

Konica Minolta also offers the industry's most cost-effective production automation suite. With Printgroove, you can input jobs 24/7 via the Internet, handle files in any format, create and update job tickets, select printers, track jobs and manage account information automatically. You'll also be able to handle last-minute job ticket editing, set device priorities, import and export CSV data, perform make-ready functions, visualize your workflow with drag-and-drop icons, even create a digital "white board" for job tracking with real-time status display.

**For all your document needs, you can count on Konica Minolta.** Konica Minolta Business Solutions U.S.A., Inc. is a leader in advanced document management technologies and IT Services. The company focuses on complete business solutions including production print systems, digital presses, multifunctional products (MFPs), managed print services, vertical application solutions and related services and supplies. Konica Minolta has won numerous awards and recognition including being recognized as the #1 Brand for Customer Loyalty in the MFP Office Copier Market by Brand Keys for six years in a row. For the fourth consecutive year, Buyers Laboratory LLC (BLI) has named Konica Minolta the winner of its "A3 MFP Line of the Year" award. In 2012, Konica Minolta also received "Document Imaging Solutions Line of the Year" recognition from BLI – and has been named to the Dow Jones Sustainability World Index in recognition of the company's economic, environmental and social performance. We are proud of our record of achievement – and we invite you to learn first-hand why you can always count on Konica Minolta. For more information, visit: [www.CountOnKonicaMinolta.com](http://www.CountOnKonicaMinolta.com)



\* Not available at time of launch.



# bizhub PRESS C1070/C1070P\*/C1060

COLOR PRODUCTION PRINTER\_COPIER\_SCANNER



**bizhub PRESS C1070**



**bizhub PRESS C1060**

**SPECIFICATIONS**

Type	Console Type	
Print / Copy Process	Laser Electrostatic Process	
Development System	Dry Dual Component Magnetic Brush Development	
Print Speed / Monthly Duty Cycle	70ppm / 350,000	60ppm / 300,000
Resolution / Gradation	1200 x 1200 dpi / 256 8-bit CMYK	
Standard Memory	4GB Image Memory / 6GB System Memory (2GB C1070P)	
• Optional Memory	System Memory expandable up to 14GB maximum by IC-602 A/B and UK-104	
Warm-up Time	Approx. 6.5 minutes	
Print / Copy Quantity	1-9,999 ( Countdown, Interrupt Capability)	
Magnification	Zoom Range: 25%-400%	
• Original Size	Optional Reversing Duplexing Document Feeder: up to 11" x 17" maximum / 100 Sheets / Mixed Original Detection	
Paper Size / Paper Weight	All trays: up to 13" x 19.2" maximum / up to 256 gsm; Tray 3 (LU-202) and Tray 4 Lower Tray (PF-602m): up to 300 gsm	
Standard Paper Supply	Tray 1: 500-sheet, Tray 2: 1000-sheet	
Maximum Paper Capacity	7,500 Sheets maximum	
Power Requirements (Engine)	208-240V, 60Hz, 22A Dedicated Line	
Dimensions (W x D x H)	29.9" x 39.1" x 42.3" (Engine only)	
Weight	642 lbs. (Engine only)	
Color Modes / Exposure Modes	Auto, Full Color, B&W, Single Color, Text, Text/Photo (Clear Text & Half-Tones), Photo Image, Map (Fine Edges, Text)	
Available Functions	Auto Zoom, Auto Paper Select, Auto Low Power, Auto Reset, Auto Shut Off, Color Mode, Combine Originals, Copy Density, Cover Sheet Feeding, Custom Size Paper Setting, Folding, Frame Center Erase, Image Centering, Image Repeat, Interrupt Copying, Job List, Manual Shut Off, Mode Memory, Non-Image Area Erase, Page Margin, Power Save, Proof Copy, Remote Monitor, Reserve Job, Rotation, Separate Scan Mode, Simplex, Duplex, Stamp, Staple, Tab Paper, Trimming, Weekly Timer, Z-Folded Original Setting, Zoom	
• Available Options	FD-503 Multi-Fold Punch Unit, FS-531 50-Sheet Staple Finisher, FS-532 100-Sheet Staple Finisher, FS-612 Booklet Finisher, GP-501 GBC Multi-Hole Punch, GP-502 In-line Ring Binder, HM-102 Paper Humidifier, HT-503 Dehumidifier Heater (for LU-202), HT-504 Dehumidifier Heater (for PF-602m), HT-506 Dehumidifier Heater (for PF-707), LC-501 Cart (for LS-505), LS-505 Large Capacity Stacker, LU-202 2,500-Sheet Paper Feed Unit, MK-732 Post-insertion Mount Kit (for FS-532), PB-503 Perfect Binder Unit, PL-502 Post Inserter, PF-602m 6,000-Sheet Paper Feed Unit, PF-707 Vacuum Paper Feed Unit, PK-512 Punch Kit, PK-522 2/3-hole Punch (for FS-532), RU-509 Relay Unit, RU-510 Relay Unit (for GP-501), SD-506 Saddle-Stitch Unit, SD-510 Saddle-stitch Kit (for FS-532)	
<b>• IC-602 INTERNAL KONICA MINOLTA IMAGE CONTROLLER (OPTIONAL)</b>		
System Version / Operating System	Konica Minolta 2.0 / TimeSys Linux 6.1	
Processor / Memory / Hard Disk	Drive Intel® Core™ 2 Duo 2.8GHz Processor / 4GB RAM / SATA: 1.5TB (500GB x3), SSD: 2GB (Controller system stored)	
Engine	I/F Serial 768kbps, C1070 Series Video Clock (Print): 56.135MHz	
Page Description Language / PDF Support	Adobe® Postscript® 3™, CPSI 3019, TIFF, PCL5c/6, XPS / PDF v1.7, PDF/X-1a, PDF/X-3	
Variable Data Handling	PPML 2.2	
Font Support	Adobe Roman 136 fonts, PCL 81 fonts	
OS Support (for IC-602)	<b>PS Plugin:</b> Windows XP, Windows Vista, Windows 7, Windows 8, Windows Server 2003, Windows Server 2008, Windows Server 2012; Mac OSX 10.5, 10.6, 10.7, 10.8 <b>PS PPD:</b> Windows XP, Windows Vista, Windows 7, Windows 8, Windows Server 2003, Windows Server 2008, Windows Server 2012; Linux CUPS	
Applications	PageScope Direct Print, PageScope EMS Plug-in, PageScope Web Connection, PageScope Account Manager, PageScope Net Care Device Manager, Net Backup Tool, Font Management Utility, Print Status Notifier, Print Utility for UNIX, Job Centro (Job Control/Editing Utility), Color Centro (Color Management Utility), Printgroove POD QUEUE	
Power Supply	100-240V, 50-60Hz	
<b>• IC-308 EXTERNAL FIERY IMAGE CONTROLLER (OPTIONAL)</b>		
Operating System / Processor / Memory	Windows 7 Professional FES 64-bit / Intel® Core™ i5 2400 3.1GHz Processor (up to 3.4GHz with Turbo-Boost) / 4GB RAM	
Hard Disk Drive / DVD Drive	1TB HDD / Internal DVD-RW Drive	
Software	Fiery System FS100 Pro	
Networking Connectivity	Simultaneous Auto Switching Protocols, EtherTalk II, TCP/IP, Novell IPX iPrint, LDAP Support (Exchange, Novell, Domino, LDAPv3/RFC2251, Email Address Access and Authentication), User Password Validation, Certificate Management (SSL/TLS, X509 Standard), IP Sec Support, IPv6 Support	
File Format Support	Adobe® Postscript® Level 1, 2, 3, Adobe PDF 1.5 to 1.7 (Adobe Acrobat® 6 to 9), PDF/X-1a, 3 and 4, Encapsulated PostScript (EPS), MS Office (DOC, XLS, PPT, PUB (via Hot Folders))	
• Optional File Format Support	JPEG, DCS 2.0, CT/LW, 1-bit TIFF, TIFF, TIFF/IT, PDF2Go	
SNMP Printing Support	AppleTalk, Bonjour, SMB (peer-to-peer), LPD	
Performance Features	Fiery Smart RIP, RIP-While-Print, RIP 1-While-Print 2, Fiery RIPChips™, EFI Video Interface Card, ECT Compression (for flexible compression ratios and visually lossless image quality)	
Fiery Utilities	Fiery Bridge 1.2, Fiery Command WorkStation 5, Fiery Driver, Fiery Graphic Arts Package, Fiery Hot Folders, Fiery Remote Scan, Fiery WebTools™, Fiery Workflow (Central, JDF), Spot-On	
• Fiery Options	Fiery Seequence Suite (Fiery Seequence Impose, Fiery Seequence Compose, Fiery Seequence Preview), Fiery Graphic Arts Package (Premium Edition), ES-2000 Spectrophotometer, Fiery Color Profiler Suite, Removable Hard Disk Drive, Fiery Integrated Workstation: Fiery Stand, GUI Kit (19" Display, Keyboard, Mouse)	
• Optional Variable Data Handling	FreeForm™ 2, PPML 2.2 (PDI certified), Creo VPS Compatible, Optimized PostScript® and Optimized PDF	
Power Supply	90-135VAC @ 47-63Hz, 6A @ 115VAC	
Dimensions (W x H x D)	8.3" x 19.2" x 19"	
<b>• IC-309 EXTERNAL CREO IMAGE CONTROLLER (OPTIONAL)**</b>		
Operating System / Processor / Memory	Windows XP Professional Edition Embedded / Intel® Quad Core™ i7-860 3.46GHz, 8MB, Turbo Boost / 5GB RAM (System: 2GB, Image: 3GB)	
Hard Disk Drive / DVD Drive	1.5TB (System and User: 500GB, Image: 1TB) / DVD RW	
Standard Hardware	Keyboard, Mouse and 19" Monitor	
• Optional Hardware	Creo Color Server product stand, X-Rite i1 Spectrophotometer	
Software Support	Adobe Acrobat 9.0 Standard, Enfocuss, PliStop Acrobat Plug-in Lite Version 8	
Networking Connectivity Ethernet	1000BASE-T/100BASE-TX/10BASE-T, TCP/IP, IPv4/IPv6, NetBEUI, AppleShare (File Sharing), PAP (File Printing), NetBIOS, 802.1x Authentication,	
Page Description Language	PS, EPS, PDF1.8 (CPSI 3017), TIFF, JPEG (excluding progressive JPEG and JPEG2000), IPDS (Transaction Power Kit only)	
Hybrid Workflow	PDF/X-1a, JDF1.3	
Variable Data Handling	PPML 2.2, VPS (Creo Variable Print Specification 1.5)	
Supported Print Standards	PDF 9, ICC v4, Pantone GOE, FograCert, Adobe PDF Print Engine (APPE) 2, via a special software update	
New Functions	Destination Profiles to Spot Colors, Pantone GOE Library, Color Sets, Print Color Sets, Office Hot Folder Tool, Remote Site Manager, JDF 1.3 connectivity	
• Optional Power Kits	Creo Color Server Job Ticket Software, Bi-directional Integration with Kodak Prinergy and Agfa Apogee, Easy VDP (Variable Data Printing), File Creator, Improved Perfect Binder Support	
Power Supply	Professional Power Kit, Process Power Kit, Imposition Power Kit, Transaction Power Kit	
Dimensions (W x H x D)	100-127VAC @ 50-60Hz, 2A @ 100-127VAC 7.1" x 17.5" x 21.9"	
<b>• IC-415 INTERNAL FIERY IMAGE CONTROLLER (OPTIONAL)</b>		
Operating System / Processor / Memory	Linux 32-bit / Intel® Pentium G850 2.9GHz Processor / 2GB RAM	
Hard Disk Drive / DVD Drive	500GB SATA / None	
Software	Fiery FS100	
Networking Connectivity	TCP/IP, AppleTalk, Point and Print, Bonjour support, Port 9100 (w/BID), IPP, FTP, SMB, Email client, Print via Email (PS/PDF), Network Time Protocol, IPv6 support	
Page Description Language	Adobe® Postscript® 3™, Enhanced PCL6 / PCL5	
Variable Data Handling	FreeForm™ 2, Record & Set Level Finishing Support, VDP Record Range Printing, Define Record Length	
Security	Data Protection, Network Protection, User Authentication	
Fiery Utilities	Fiery Bridge 1.2, Fiery Command WorkStation 5, Fiery Driver, Optional Fiery Embedded Productivity Package, Optional Fiery Hot Folders, Fiery Remote Scan, Fiery WebTools™	

• OPTIONAL • STANDARD

\*All specifications relating to scanning and copying are not applicable to the bizhub PRESS C1070P

\*\*Not available at time of launch.



**KONICA MINOLTA**

KONICA MINOLTA BUSINESS SOLUTIONS U.S.A., INC.  
100 Williams Drive  
Ramsey, NJ 07446

www.CountOnKonicaMinolta.com  
www.kmbs.konicaminolta.us

Konica Minolta Optimized Print Services offers a full suite of device output services and workflow solutions that increase efficiency and control costs. Please contact your authorized Konica Minolta sales representative for details.

Printed on a:  
**bizhub PRESS C8000**

© 2014 KONICA MINOLTA BUSINESS SOLUTIONS U.S.A., INC. All rights reserved. Reproduction in whole or in part without written permission is prohibited. KONICA MINOLTA, the KONICA MINOLTA logo, Count on Konica Minolta, bizhub and PageScope are registered trademarks or trademarks of KONICA MINOLTA, INC. All other product and brand names are trademarks or registered trademarks of their respective companies or organizations. All other brands and product names are registered trademarks or trademarks of their respective owners. Design & specifications are subject to change without notice. Some functions may require options, which may or may not be available at time of launch.



Item #: C1070BRO  
2/14