

**High-volume workflow, print-shop performance.**

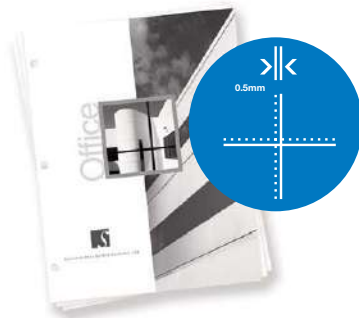


**Digital Production Printing System.** The power to print, and keep on printing. 105 pages per minute. 1,500,000 impressions per month. Scanning. Finishing. Precision paper handling and registration. Powerful PageScope Software. With superior image quality and hands-off reliability.



The essentials of imaging

Registration accuracy of 0.5 mm or less maintains razor-sharp print definition – and you'll have independent adjustments for transversal direction, timing and image shift, plus low temperature fixing and improved sensing precision.



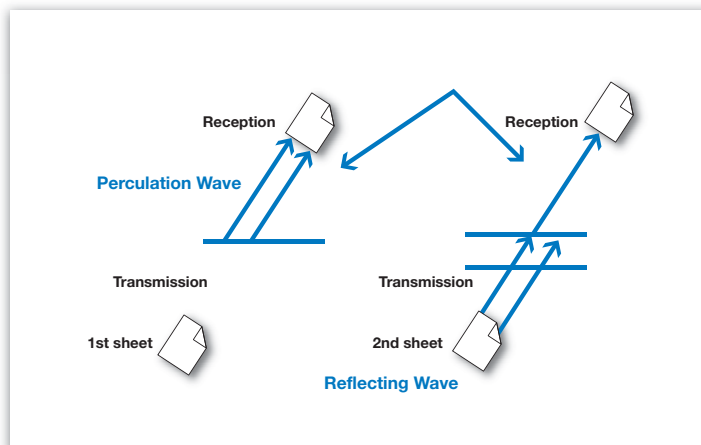
### A true production professional.

Purpose built. From the drawing board to the production floor, for the rigors of the production environment. That's the bizhub PRO 1050. A professional production system, from Konica Minolta. Designed through a process of technological innovation resulting in numerous pending patents – in make-ready, imaging, and finishing. A superior replacement for offset systems in the digital era. And the bizhub PRO 1050 delivers exactly what you need: the durability and productivity of legacy "big iron" equipment, at a lower cost – and with a smaller footprint too!

## Do it all – and do it like a PRO.

That's why you need bizhub PRO 1050. To speed your output. Manage your input. Maintain control, from scanning to finished documents. To quicken your workflow, serve your clients, cut your costs – and improve the quality of all your printed, finished documents.

### Balance of Perculation Volume



### Multi-feed detection sensor

uses ultrasound to detect misfeeds, prevent paper jams and maximize production efficiency for long unattended print runs.

### Faster, stronger, smarter, tougher.

Blazing speed – 105 ppm print/copy output, 103 ppm scanning. Powerhouse performance, achieved through a monthly duty cycle of 1,500,000 impressions. Hands-off reliability, with air-assist paper feed that uses air blowers in paper trays to separate sheets and keep even coated paper stock moving smoothly – and a multi-feed detection sensor to prevent jams before they occur. The bizhub PRO 1050 is built to withstand the highest-volume document traffic in the toughest print-shop environments. With the bizhub PRO 1050 on your production team, you'll have the competitive edge – and the power to grow your business.

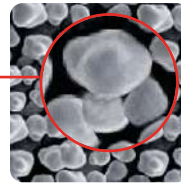


### Change toner on the fly

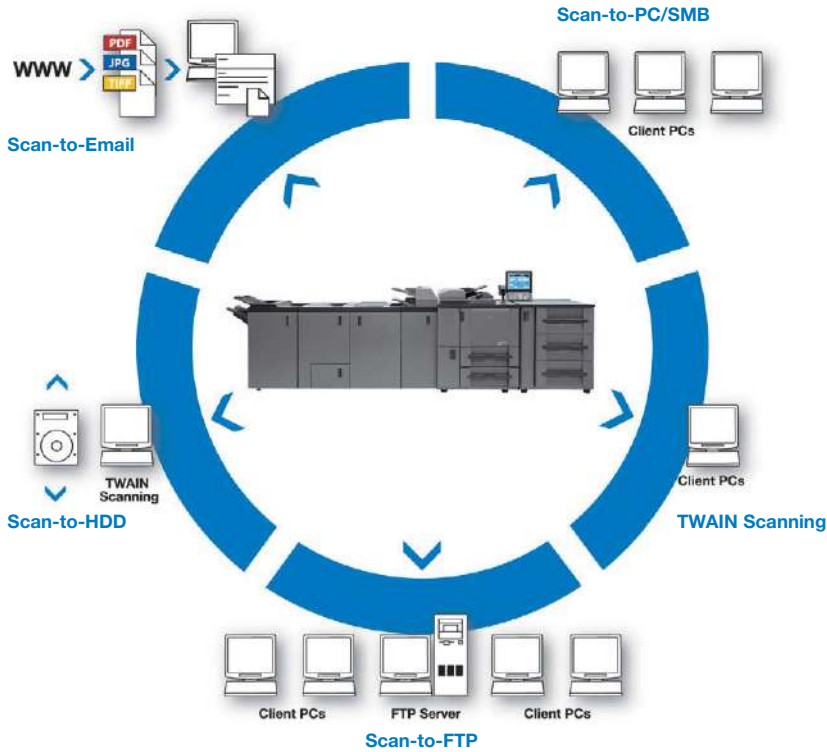
with ACT™ (Advanced Continuous Toner™) replacement system – so you won't need to interrupt long print/copy runs.

Next-generation Simitri® Polymerized Toner with ultra-fine particles of smaller size and more consistent shape that improve detail and definition — giving your prints and copies sharper text, crisper images, improved halftones.

Simitri®



Pulverized



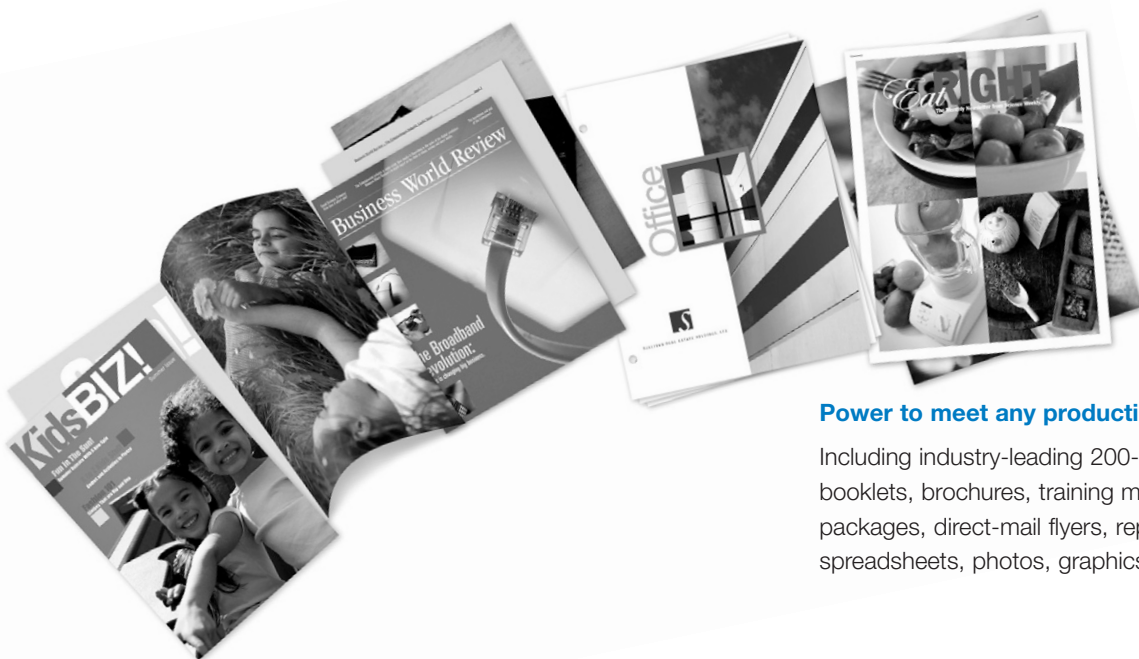
Scan and distribute in a single step with total flexibility and document security, sending electronic files across the aisle or around the world.

### Precision imaging and registration.

Professional print production is all about results – and with the bizhub PRO 1050, your results will be visibly superior. Konica Minolta's exclusive next-generation Simitri® Polymerized Toner sharpens text, refines detail and gives every halftone image smoother gradations and higher definition. You'll also have registration accuracy to within 0.5 mm, with independent adjustments to help you fine-tune production output – plus low temperature fixing and improved sensing accuracy to maintain accuracy over long print runs.

### A central document resource.

Not only does the bizhub PRO 1050 power up your print production – it also gives you fast, flexible scanning and distribution. So hard-copy documents enter your workflow faster. And you can move information to any destination, for sharing, storing, accessing and archiving. Scan-to-Email. Scan-to-SMB, distributing documents to user's desktops for immediate access. Scan-to-HDD, for storage in secure mailboxes on your built-in, high-capacity disk drive. Scan-to-FTP, for retrieval by any network user. And TWAIN scan for retrieval of images scanned into your hard drive.



### Power to meet any production demand.

Including industry-leading 200-page saddle-stitched booklets, brochures, training manuals, human resources packages, direct-mail flyers, reports, presentations, spreadsheets, photos, graphics and more.



### Whatever it takes to get the job done.

The bizhub PRO 1050 gives you all the power, all the paper, all the print and finish capabilities you need. A multi-position staple/stacker lets you output 100-page reports, with built-in staple-cutting function. A post-engine inserter lets you add pre-printed covers and insert sheets to documents. Speaking of heavy stock, you'll be able to handle paper weights from 16 lb. bond to 170 lb. index – and sizes up to 12" x 18", in universal paper trays. Maximum paper capacity of 9,000 sheets keeps production rolling while you concurrently pre-program future jobs. And two optional stackers, each with 5,000-sheet capacity, let you move print output for offline finishing or shipping with rollaway ease. Why all this extra capacity? Because a true production professional can handle anything the job demands.

## Professional production, start to finish.

You need it? You've got it. 9,000-sheet input. Stapling, hole-punching, cover insertion. 6 folding options. Saddle-stitch booklet-making. 10,000-sheet output. And stacker units that roll out to make handling your print production run more efficient.





## 6 Folding Options:

half-fold booklet-making, gatefold, letter fold-in, letter fold-out, double parallel fold, and z-fold.



① **DF-603 Reversing Auto Document Feeder:**

100-sheet capacity, handles up to 11" x 17" originals.

② **Large LCD Screen:**

simple commands and intuitive menus make operation easy for any user.

③ **FS-503 Stapler/Stacker Unit:**

provides multi-position stapling, 100-sheet staple capacity, staple cutting function, and a total capacity of 3,000 sheets

④ **SD-501 Saddle-Stitch Unit:**

center-staples up to 50 sheets for 200-page booklet-making.

⑤ **Toner Compartment:**

for clean, fast toner replacement on the fly.

⑥ **Standard Paper Trays:**

two universal trays, each holding up to 1,500 sheets.

⑦ **PF-701 Universal Paper Tray Unit:**

3 optional trays, handling up to 12" x 18" paper and 2,000 sheets each.

⑧ **FD-501 Multi-Folding Unit:**

6 folding types, plus cover insertion and hole-punch capability.

○ **LS-501, LS-502 Large Capacity Stackers:**

each with 5,000-sheet capacity and roll-out design.

○ = Not shown



### Anyone can print like a PRO.

With the bizhub PRO 1050, you'll have all the power to meet your production demands – but you won't need a full-time professional operator. The print controller is built-in – and operated by a large LCD screen with a simple, intuitive interface that's easy to understand. You'll have a powerful, 20 GB hard disk drive, genuine Adobe PS3 and PCL5e/XL (PCL6) interpreters and versatile, easy to use print drivers. You'll also have on-board control of a wide range of print production and finishing functions – including Job Memory (up to 30 jobs), Recall and Reserve (up to 500 jobs) for quick printing and reprinting.

## Every step of the way, you're in control.

Larger, brighter touch-screen. LCD display featuring print preview thumbnails. Print drivers with full production features, including input/output selection and finishing options. All this, plus the power of PageScope – a full suite of management tools to speed your workflow and increase your productivity.

### Simple, intuitive command menus.

Simple, intuitive command menus. Controls are at your fingertips. Commands are logical. Menus are intuitive – and organized by function, with separate sequences for scanning, copying and printing. Without leaving your bizhub PRO 1050, you can preview an on-screen thumbnail of the document you're about to print – allowing you to check page layout, margins and overall appearance, cutting the need for wasteful re-runs. And comprehensive setup and input/output settings are made even easier by a graphic icon that highlights input paper tray and output tray location.

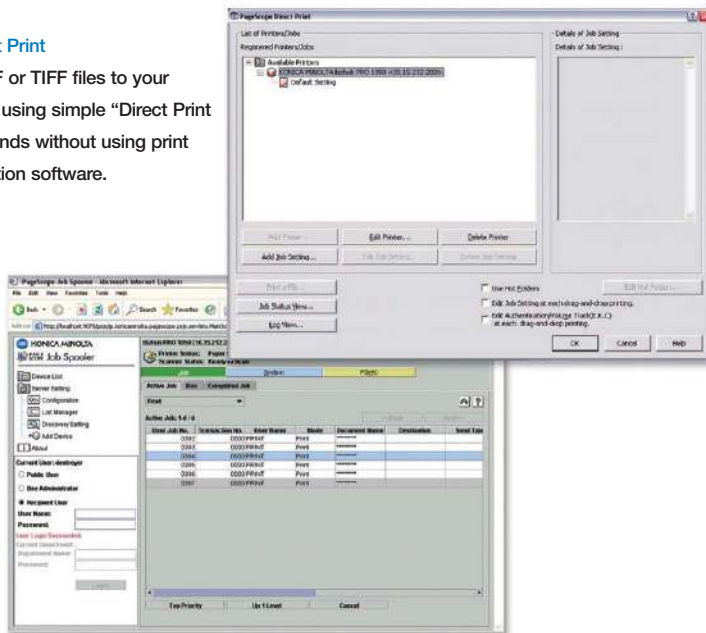


Easy walk-up print production with simple controls and a large LCD screen mounted on a convenient swivel arm.



### PageScope Direct Print

lets you send PDF or TIFF files to your bizhub PRO 1050 using simple "Direct Print Function" commands without using print drivers or application software.



### PageScope Job Spooler

allows you to view and manage your bizhub PRO 1050 print queue from any network-connected PC.

### The power of PageScope.

It's the industry's most comprehensive suite of software – all working seamlessly together to help you speed print production and manage documents and devices. PageScope Direct Print and PageScope Job Spooler streamline your production output. PageScope Web Connection lets you check device status via your standard web browser. PageScope Net Care helps IT administrators manage all MIB-compliant output devices from a single point – even non-Konica Minolta models.



**PAGESCOPE  
SOFTWARE**





# bizhub PRO 1050



## General Specifications

**TYPE:**  
Console Digital  
Printer/Copier/Scanner

**IMAGING SYSTEM:**  
Laser Electrostatic

**DEVELOPMENT SYSTEM:**  
Next-Generation Simitri®  
Polymerized Toner

**MONTHLY DUTY CYCLE:**  
1,500,000 pages

**PRINT/COPY SPEED:**  
105 ppm

**PRINT RESOLUTION:**  
1200 x 600 dpi

**REGISTRATION ACCURACY:**  
0.5mm or less

**SCANNING SPEED:**  
103 ppm

**SCAN RESOLUTION:**  
200, 300, 400, 600 dpi

**HALFTONE REPRODUCTION:**  
256 gradations

**MEMORY:**  
512 MB (standard)  
40 GB (HDD)

**WARM-UP TIME:**  
Less than 6 minutes

**FIRST COPY:**  
Less than 3 seconds

**COPY QUANTITY:**  
1 - 9,999 copies (countdown,  
interrupt capability)

**MAGNIFICATION:**  
Zoom range: 25 - 400%,  
0.1% increments  
Preset reduction: 93%, 77%,  
65%, 50%  
Preset enlargement: 121%,  
129%, 155%, 200%

**EXPOSURE MODES:**  
Auto  
Text  
Photo  
Text/Photo  
Manual

**ORIGINAL SIZE:**  
To 11" x 17" maximum

**PAPER SIZE:**  
4" x 6" to 12" x 18"\*

**PAPER WEIGHT:**  
16 lb. bond to 140 lb. index  
Up to 170 lb. index / 300 gsm  
(from Tray 4)  
OHP transparencies, tab pages,  
coated stock

**PAPER SUPPLY:**  
Tray 1: 1,500-sheet universal  
paper tray  
Tray 2: 1,500-sheet universal  
paper tray

**OPTIONAL PAPER SUPPLY:**  
Three-tray universal paper feed  
unit, including:  
Tray 3: 2,000-sheet capacity  
Tray 4: 2,000-sheet capacity  
Tray 5: 2,000-sheet capacity

**MAXIMUM PAPER CAPACITY:**  
Input: 9,000 sheets (total, with  
optional paper feed unit)  
Output: 10,000 sheets (total, with  
2 optional stacker units)

**DOCUMENT FEEDER:**  
DF-603 Reversing Auto  
Document Feeder (standard)  
Speed: 103 opm  
Paper Capacity: up to 100 sheets  
Paper Size:  
5-1/2" x 8-1/2" to 11" x 17"  
Paper Weight:  
up to 110 lb. index, 200 gsm

**POWER REQUIREMENTS:**  
208 - 240 V, 17.6 A, 60 Hz

**POWER CONSUMPTION:**  
3.66 kW (max. with full options)

**MAIN BODY DIMENSIONS  
(W x D x H):**  
35-1/4" x 30-1/2" x 46-7/8"  
(895 x 775 x 1190 mm)

**WEIGHT:**  
683 lbs. (310 kg) (with ADF)

**OPTIONS:**  
FS-503 Stapler/Stacker Unit  
(100-sheet capacity, staple  
cutting function)  
FD-501 Multi-Folding Unit  
(6 folding types, cover inserter,  
hole-punch)  
SD-501 Saddle-Stitch Unit  
(50 sheets, 200-page  
booklet-making)  
LS-501 Large Capacity Stacker  
(5,000-sheet capacity)  
LS-502 Large Capacity Stacker  
(5,000-sheet capacity)  
PF-701 Paper Feed Unit  
(three universal trays, each  
2,000-sheet capacity)  
Removable HDD Kit

**PAGESCOPE APPLICATIONS:**  
Production Printing:  
PageScope DirectPrint  
PageScope Job Spooler  
Network & Device Management:  
PageScope EMS Plug-Ins  
PageScope NDPS Gateway  
PageScope Net Care  
PageScope Network Setup  
PageScope Web Connection

## Available Functions\*

Annotation (Bates Stamp)  
APS/AMS  
Auto Document Feeding  
Auto Duplex, Stackless  
Auto Layout (centering)  
Auto Low Power, Reset, Shutoff  
Auto/Text/Photo/Increase  
Contrast Exposure Modes  
Auto Tray Switching  
Book Copy  
Booklet Making  
Border Erase  
(frame, fold, frame & fold)  
Cover Insertion  
Electronic Copy Monitor  
(1,000 accounts)  
Energy Save Mode  
Erase (frame, fold, non-image area)  
Face-Up or Face-Down Output  
Folding (booklet, gatefold, letter  
fold-in, letter fold-out, double  
parallel, z-fold)  
Grouping  
Hole-Punching (2-hole, 3-hole)  
Image Insert  
Image Overlay (scanned image  
onto copied image)  
Image Repeat  
Image Rotation  
Image Shift  
Intelligent Job Building  
Interrupt (pause)  
Job Memory (30 jobs), Recall,  
Reserve (100 jobs)  
Job Status  
Mixed Original Detection  
Negative Image Capability  
OHP Interleave  
(blank or copied sheets)  
Print Spooling  
Proof Copy  
Rotation Exit (horizontal/vertical)  
Saddle-Stitching (center-stapling  
up to 50 sheets for 200-page  
booklets)  
Scanning: Email, FTP, PC, HDD,  
TWAIN scan (HDD data  
can be retrieved through the  
TWAIN Driver)  
Secure Print  
Separate Scanning (Job Building)  
Sorting  
Stamping  
Stapling  
Storyboarding (2-in-1, 4-in-1,  
8-in-1, even 16-in-1 from  
print driver)  
Tabs (from tabbed originals to  
tabbed sheets with tab  
ejection feature)  
Tandem Copy/Print Capability  
Weekly Timer  
Zoom

## Print Controller Specifications

**TYPE:**  
Internal Print Controller

**CENTRAL PROCESSING UNIT:**  
Intel® Pentium® III @ 933MHz

**MEMORY:**  
512 MB

**HARD DISK DRIVE:**  
20 GB

**PRINT DRIVERS:**  
Windows, 98, ME, NT4.0, 2000,  
XP, 2003  
Mac OS 8.0 or later  
Mac OS 10.2/10.3

**PAGE DESCRIPTION LANGUAGE:**  
PCL5e/XL (PCL6)  
Adobe PostScript 3

**FONTS:**  
PCL Fonts: 88  
PostScript Fonts: 136

**INTERFACE:**  
Ethernet 10/100 Base T  
Parallel IEEE 1284

**SECURITY:**  
ISO-15408 Compliant

**NETWORK SCANNING:**  
Email, FTP, PC, HDD, TWAIN scan  
(HDD data can be retrieved  
through the TWAIN Driver)



© 2006 KONICA MINOLTA BUSINESS SOLUTIONS U.S.A., INC. All rights reserved. Reproduction in whole or in part without written permission is prohibited. Konica Minolta and The essentials of imaging are trademarks of KONICA MINOLTA HOLDINGS, INC. bizhub, bizhub PRO and PageScope are trademarks of KONICA MINOLTA BUSINESS TECHNOLOGIES, INC. Simitri is a registered trademark of KONICA MINOLTA BUSINESS SOLUTIONS. All other brands and product names are registered trademarks or trademarks of their respective owners.

Design & specifications are subject to change without notice.

\*Some functions may require options.

# bizhub PRO 1050



KONICA MINOLTA

KONICA MINOLTA  
BUSINESS SOLUTIONS U.S.A., INC.

100 Williams Drive  
Ramsey, NJ 07446

[www.kmbs.konicaminolta.us](http://www.kmbs.konicaminolta.us)  
[www.kmbs.konicaminolta.us/solutions](http://www.kmbs.konicaminolta.us/solutions)

Item #: 1050BRO  
09/06