



KONICA MINOLTA

[www.konicaminolta.co.uk](http://www.konicaminolta.co.uk)

Professional High Volume system bizhub PRO 920



# **bizhub PRO 920**

Effective and robust

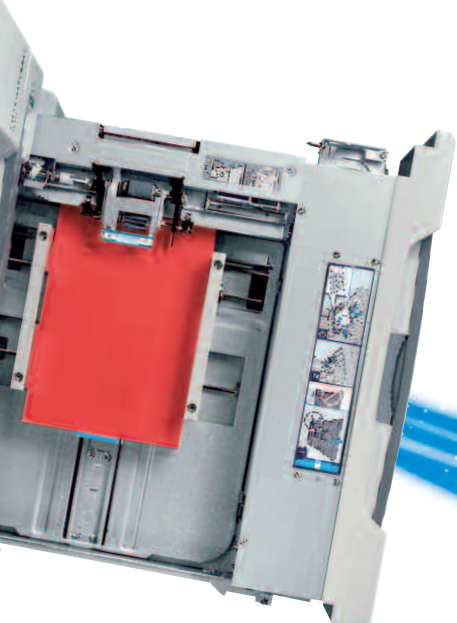
The essentials of imaging

→ **Full fast-quality document creation at its best**

This excellent professional high volume system combines the advantages of a modular system for high-volume office printing, small CRD environments and digital print services.

The supreme Konica Minolta technology covers all everyday monochrome digital printing requirements with first-class print quality thanks to Simitri™, the unique polymerised toner, which combines high quality with low consumption.

All in all the bizhub PRO 920 offers you a very effective robust printing system for digital document production which can be customised for your special needs.



Capability, quality,  
**capacity**

→ **Reliable high-volume printing**

The bizhub PRO 920 handles large and small volumes, both printing and copying, with an absolute maximum uptime.

- **Top speed:**
  - 92 (A4) and 54 (A3) sheets per minute
  - 5,520 (A4) and 3,240 (A3) sheets per hour
- **Monthly average print volume:**  
up to 200,000 sheets per month and a peak level of 750,000 sheets

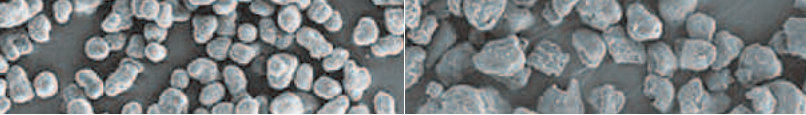
Automatic document feed for copying and scanning.

- **Output:**
  - up to 3,200 sheets
  - up to 100 booklets with the trimming unit

With a media range of up to 200 g/m<sup>2</sup> and input paper sizes from A6 to A3+ (314 x 460 mm) the bizhub PRO 920 covers all digital high volume requirements incredibly well.

**bizhub PRO 920**





Simitri™-polymerised toner

Conventional toner

## ➔ Image quality

Simitri™, Konica Minolta's unique polymerised toner, gives you much improved output quality at reduced consumption levels. Because the particles are uniform in shape and only half the size of conventional toner particles, the polymerised toner means improved reproduction of thin lines and dots, smoother halftone gradations and impressively sharp copies and printouts.

This is further enhanced with a copy mode of up to 600 x 600 dpi and a print mode of up to 2,400 x 600 dpi to give superb high-output quality.



## ➔ Great performance

Designed for the demanding high volume environment, the input capacity is huge, up to 7,150 sheets. The standard provision is 2,150 sheets, which can be supplemented with one of the two large-capacity cassettes (up to 5,000 sheets) and you can opt for A4 or A3+.

The flexibility in document creation is even more outstanding once you see the variety of paper handling possibilities.

For each and every part of the print job, i.e. at page level, you can specify:

- **Mixmedia:**  
different sorts and colours of paper
- **Mixplex:**  
one and two-sided printing  
in one print job

### The paper sources:

in the main body, there are three different universal cassettes (two with 500 sheets and one with 1,000 sheets), the multi-bypass tray (150 sheets) and the optional A4 or A3+ large-capacity cassettes for up to 5,000 sheets.

In addition the post-insertion facility features two trays for pre-printed colour material, A4/A3 colour covers or inserts, for example. All inserted sheets can be two or four-hole punched and/or stapled. With the z-fold/punch unit you are even able to insert A3 sheets into A4 print jobs.



two-sided  
printing



mixplex  
one/two sided – switch  
during operation



mixmedia  
white/coloured sheets  
from different trays



combined  
mixmedia/mixplex



colour sheet insertion  
booklet (A3)



colour cover insertion  
booklet (A3)



colour sheet insertion  
report (A4)



colour cover insertion  
report (A4)



# Excellent quality

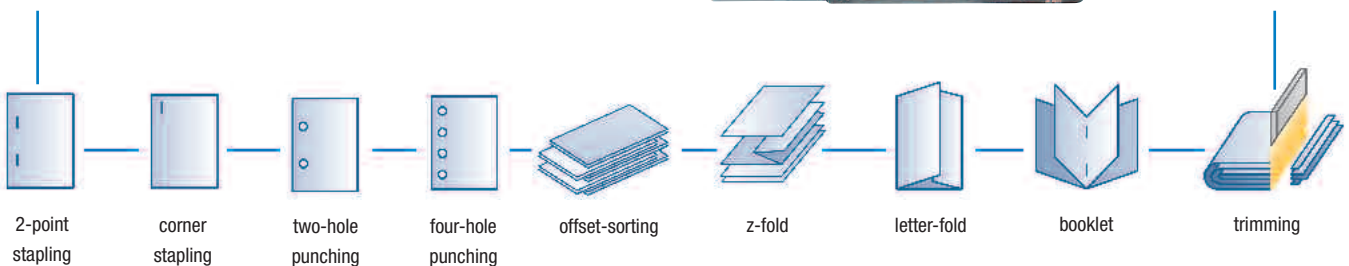
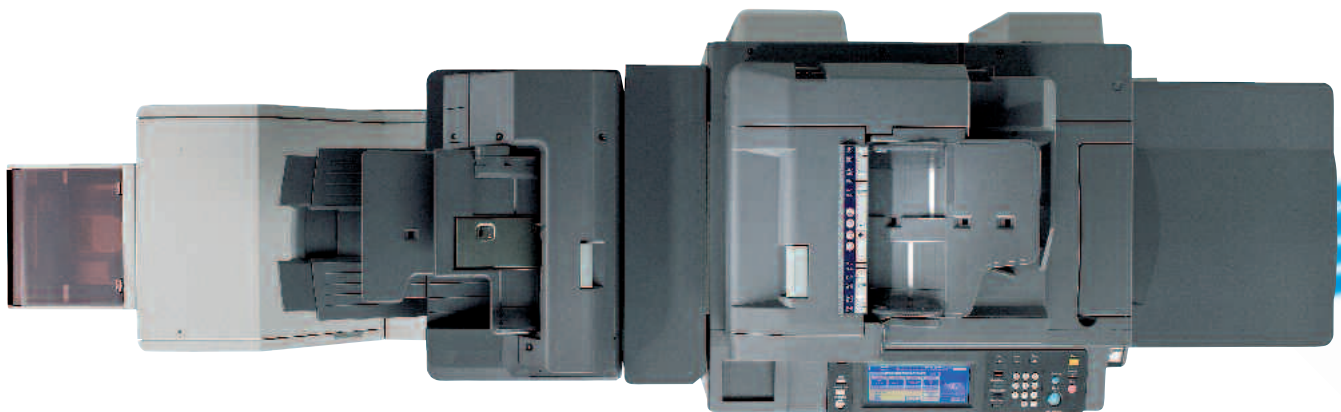
## ➔ Inline finishing

The bizhub PRO 920 offers splendid and fully automatic finishing processes to make each product impressively complete. All are integrated in the fully flexible document creation functions.

Particularly impressive is the booklet finishing with saddle stitch (for booklets with up to 20 sheets, i.e. up to 80 pages). The trimming unit gives that enhanced professional look to the booklets.

In addition, post-insertion features many possibilities to further refine and brighten documents, for example full colour covers for booklets. The booklet finishing unit also offers letter-fold-in, letter-fold-out and letter-fold for sets of up to three sheets.

For those who still want a professional document without using the booklet finisher, there are other options like the staple finisher to do just that.





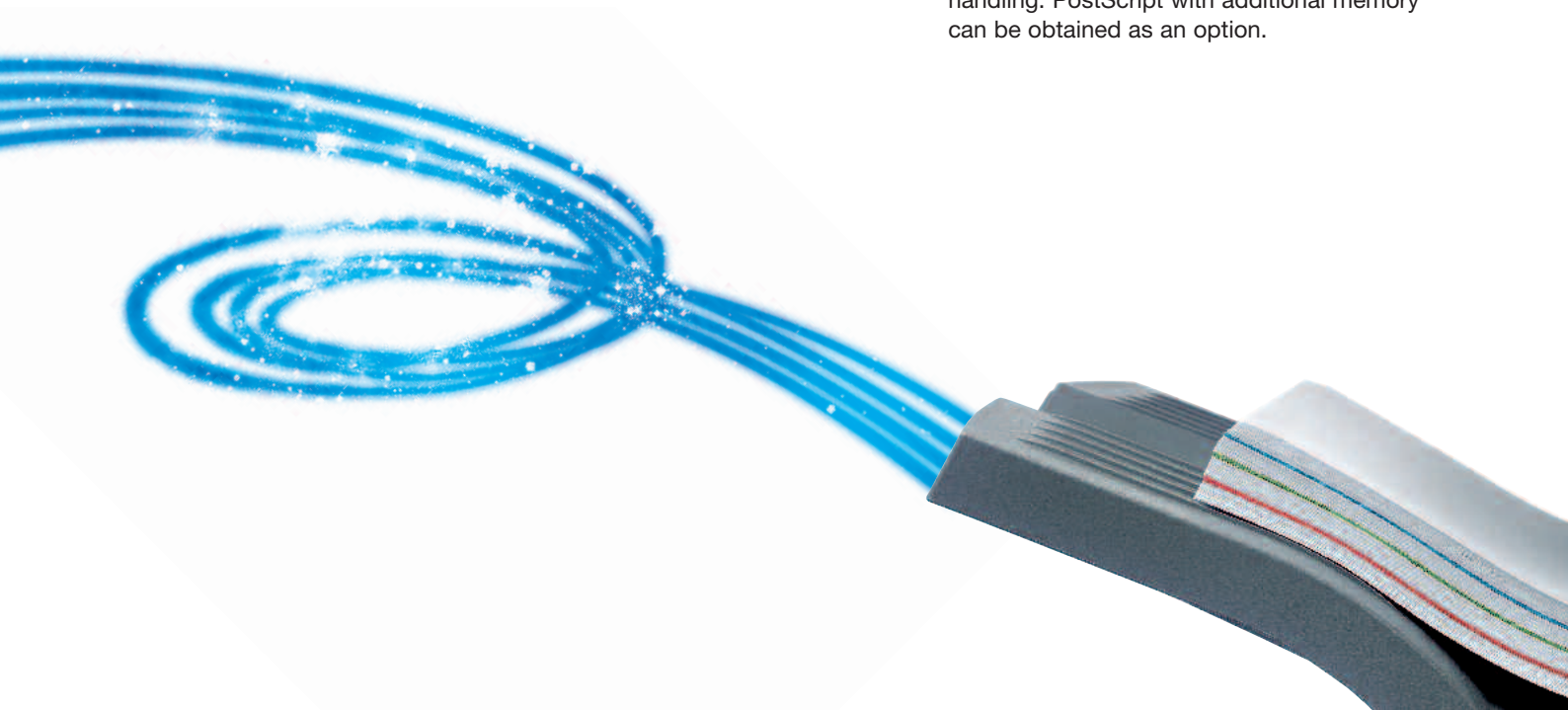
# finishing

- Documents with up to 100 sheets can be two-point stapled.
- Corner stapling of documents with up to 100 sheets. This can be in any one of the four corners.

For maximum efficiency, documents for filing should be punched during the production process so that no one wastes time doing this later.

- The finishing process punching can be simply programmed for either two or four-hole operation.
- The two and four-hole punching option is also available for post-insertion of sheets.

- The z-fold option is available for incorporation in all documents. When producing A4-size documents, the inclusion of larger sheets can be troublesome and look unprofessional. The z-fold finishing option solves this problem so that the oversize sheets are a natural part of the document. Naturally, two and four-hole punching can also be specified.
- The bizhub PRO 920 subset finishing capabilities are a real highlight because you can specify stapling options at page level which enables you to create documents for different target groups, for example government departments or insurance companies.
- The integrated controller with PCL as standard supports all finishing functions and the incorporated PageScope Tools facilitate easy handling. PostScript with additional memory can be obtained as an option.





# True to your **original**

## ➔ **Quality high-volume scanning**

With automatic document feed, the bizhub PRO 920 has a scan speed of up to 92 originals per minute and offers the following modes:

- TWAIN scan
- Scan-to-HDD
- Scan-to-FTP
- Scan-to-SMB
- Scan-to-eMail

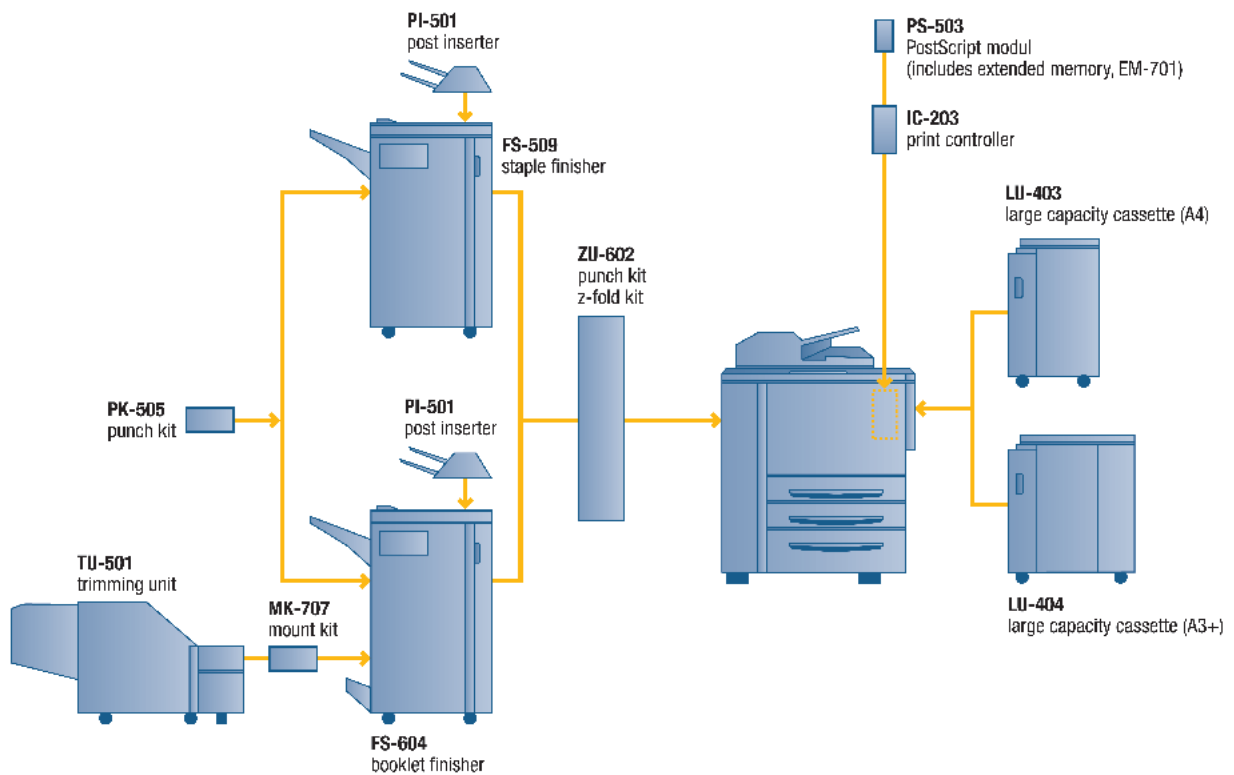
## ➔ **Superior technology under your control**

Whether via your workstation or with the bizhub PRO 920 straightforward touch-screen display, you have a remarkable and reliable high volume system at your fingertips. The bizhub PRO 920 combines quality image production with outstanding finishing options, provides precision scanning and, of course, photocopying par excellence.

The benefits of your investment will become immediately obvious.



# Your options at a glance





KONICA MINOLTA

## Technical specifications

### Copier specifications

**Copy speed A4**

Up to 92 copies/min.  
Up to 5,520 copies/hour

**Copy speed A3**

Up to 54 copies/min.  
Up to 3,240 copies/hour

**Copy resolution**

Max.: 600 x 600 dpi

**1st copy**

Less than 3,1 sec. (A4 crosswise)

**Gradations**

256 gradations

**Magnification**

25–400% in 0.1% steps

**Multiple copies**

1–9,999

**Copy memory**

Standard: 256 MB

**Copier hard disk**

40 GB

### Printer specifications

**Print speed A4**

Up to 92 prints/min.  
Up to 5,520 prints/hour

**Print speed A3**

Up to 54 prints/min.  
Up to 3,240 prints/hour

**Print resolution**

Max.: 2,400 x 600 dpi

**Page description language**

PCL 5e, PCL 6, PS3, TIFF, PDF

**Interface**

Parallel  
10/100-Base-T Ethernet

**Print memory**

Standard: 256 MB  
Max.: 512 MB

**Printer hard disk**

40 GB

**Operating system**

Windows 98/2000/ME/XP/NT4.0  
Mac OS 9.0 or higher

### Scanner specifications

**Scan speed**

Up to 92 opm

**Scan resolution**

Max.: 600 x 600 dpi

**Scan modes**

TWAIN scan  
Scan-to-HDD  
Scan-to-FTP  
Scan-to-SMB  
Scan-to-eMail

### System specifications

**Automatic document feeder**

Max.: 100 sheets

**Input paper size**

A6–A3+ (max. 314 x 460 mm)

**Paper weight**

50–200 g/m<sup>2</sup>

**Paper input capacity**

Standard: 2,150 sheets  
Max.: 7,150 with LCT

**Paper output capacity**

Max.: 3,200 sheets

**Finishing modes (optional)**

Stapling  
Auto-shift sorting and grouping  
Punching (2 + 4 holes)  
Folding (z-fold, letter-fold-in,  
letter-fold-out)  
Post insertion  
Booklet making  
Trimming

**Warm-up time**

Less than 330 sec.

**Main body dimensions (W x D x H mm)**

888 x 775 x 1160

**Main body weight**

Approx. 280 kg



All specifications relating to paper capacity refer to A4-size paper of 80 g/m<sup>2</sup> quality.

All specifications relating to scanning, copying or printing speeds refer to A4-size paper that is scanned, copied or printed crosswise in multipage, simplex mode.

The memory capacities listed refer to A4-size paper with the toner coverage detailed in the respective footnote.

Some of the product illustrations contain optional accessories.

Konica Minolta does not warrant that any prices or specifications mentioned will be error-free.

Specifications are subject to change without notice.

Microsoft, Windows and the Windows logo are trademarks, or registered trademarks of Microsoft Corporation in the United States and/or other countries.

All other brand and product names may be registered trademarks or trademarks of their respective holders and are hereby acknowledged.

Printed in UK.

Your Konica Minolta Business Solutions Partner:



**Konica Minolta  
Business Solutions (UK) Ltd**

**Direct Operations**

Miles Gray Road, Basildon  
Essex SS14 3AR  
Tel: 0800 833864  
Fax: 01268 282480  
www.konicaminolta.co.uk