



KONICA MINOLTA

## bizhub PRO C6500

DO BUSINESS BETTER



CONNECT

COMMUNICATE

CONTROL

### COLOR PRINT PRODUCTION – WITH BIZHUB PRO POWER.

The bizhub PRO C6500 makes color print production more profitable and professional – with superior quality, smaller footprint and lower cost of ownership. Spectacular color quality gives every document greater impact. 65 ppm output in color and B&W provides power to spare. Robust design delivers a high-volume, 300,000-page monthly duty cycle. Powerful image controller options manage sophisticated color functions with point-and-click simplicity. And flexible inline finishing capabilities include 200-page trimmed booklet-making – giving you the total color solution you’ve been looking for, at a cost you can afford.



The essentials of imaging

## BRILLIANT COLOR PRINTING AND FINISHING – AT 65 PPM!

The business world is moving to color – for high-impact product brochures and direct-mail campaigns, persuasive presentations, powerful reports and motivational training and human resource materials.

The reason is simple: color communicates. And to answer the rising demand for high-quality, high-speed color output, the bizhub PRO C6500 brings short-run, in-house color production within reach of corporate CRDs and data centers as well as quick print and commercial print applications.

The affordable bizhub PRO C6500 provides up to 65 ppm (maximum 3900 8.5" x 11" impressions per hour) output in both color and B&W, so the need for color never slows down your production workflow. A monthly duty cycle of 300,000 pages gives the bizhub PRO C6500 workhorse power in high-volume environments.

Exclusive Konica Minolta Simitri® HD Color Polymerized Toner enhances fine detail and insures accurate, consistent color in every document you print. And when you combine the speed and power of the bizhub PRO C6500 with available variable data printing software, you'll have an unbeatable way to increase profits via personalized color output.



**CONNECT**\_INPUT\_OUTPUT\_CLIENTS\_PROJECTS\_PRODUCTIVITY



**In-house color printing.** The bizhub PRO C6500 creates spectacular full-color booklets, reports, presentations and internal documents – the high-quality color communications that corporate and commercial clients demand.

**Fine detail, legible text.** Next-generation Simitri® HD Color Polymerized Toner technology reduces particle size for ultra-fine image detail, sharpens text and improves halftone reproduction in both color and B&W.

**Heavy and coated stock.** The bizhub PRO C6500 handles heavy and coated paper stock – up to 300 gsm, with full duplex capability on 256 gsm.

**Full-bleed 12" x 18" printing.** Sheet sizes from 4" x 6" up to 13" x 19.2" let you reproduce full-bleed 12" x 18" color originals and preserve crop marks and borders – a real plus for printing professionals.

**200-page trimmed booklets.** The bizhub PRO C6500 is the highest-capacity color booklet-maker in the industry, creating 200-page saddle-stitched and face-trimmed color booklets with image shift for perfect page alignment.

**Simitri HD**  
High Definition Polymerized Toner





## BUILT FOR ONE PURPOSE – TO WORK LIKE A PRO.

The bizhub PRO C6500 is purpose-built to meet the most demanding applications – designed by professionals, for professionals. It carries you far beyond the capabilities of ordinary color printers into the professional world of workhorse production print systems that meet rigorous, uncompromising standards – increasing your output, improving your document quality and managing your workflow more efficiently.

Your bizhub PRO C6500 gets the job done, and works the way you do. It's a scalable, right-size solution, with all the production tools and performance options you need to migrate from offset equipment, while maintaining superb color print quality – and achieving “big iron” performance at lower cost with a smaller footprint.



COMMUNICATE\_DISTRIBUTION\_CONCEPTS\_CHANGES\_SCHEDULES\_VALUES.

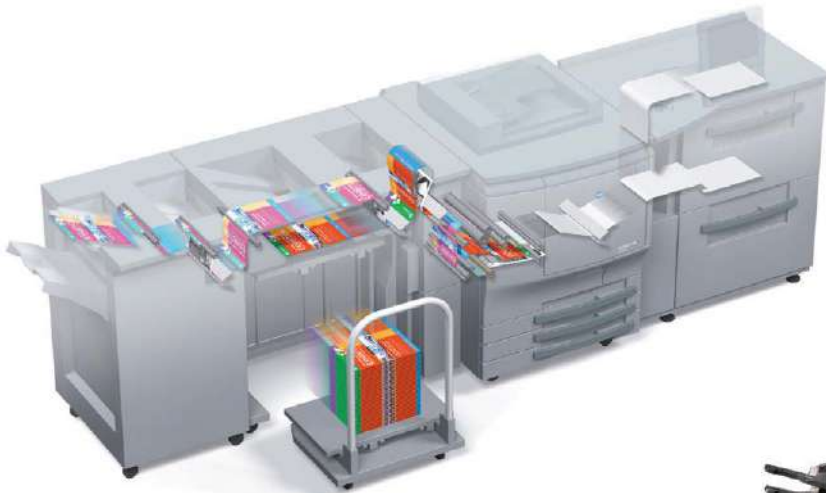
**Precise registration accuracy.** Front and reverse sides are precisely matched to insure accurate alignment within 1mm for booklets or other duplex multi-page documents, with independent adjustments for transversal direction timing and image shift.

**Air-assist paper feed.** Air blowers in paper trays separate sheets to improve high-speed paper handling, so even coated substrates move smoothly through your high-speed production cycle.

**Internal heating/dehumidifying unit.** For smooth, fast throughput, an internal heating/dehumidifying unit environmentally conditions paper stock for professional image quality with less curling and fewer misfeeds.

**Change toner on the fly.** For longer uninterrupted print runs, the bizhub PRO C6500 lets you change toner on the fly with a clean, simple exchange of toner bottles – to keep your output flowing.

**Maximum 7,500-sheet input.** With the optional PF-601 Paper Feed Unit, your bizhub PRO C6500 loads up to 7,500 sheets – so you can reduce labor costs by producing long print runs with unattended operation. The PF-601 even features ultrasonic double-feed detection for flawless feeding reliability.



**Powerful finishing options.** The FS-503 provides 100-sheet stapling for color presentations and reports; the SD-501 Booklet Finisher allows you to create 200-page saddle-stitched and trimmed color booklets.

**Six folding capabilities.** With the optional FD-501 Multi-Folding Unit, you'll have a wide array of folding capabilities – including half fold, letter fold-in, letter fold-out, z-fold, double parallel fold and gate fold.

**5,000-sheet stacker option.** The optional LS-501 Large Capacity Stacker holds up to 5,000 sheets and includes a roll-away cart that lets you move print output more easily for nearline finishing or packing and distribution.



FD-501



FS-503



LS-501

## TRUE PRODUCTION POWER – WITH FIERY COLOR CONTROL.

The bizhub PRO C6500 is powerful, yet simple to operate – and for cost-effective color print production, that's an ideal combination.

An onboard touch-screen provides fingertip setup and input/output control. All copying and finishing functions are easily accessible through clear, intuitive menus, so operators can move more jobs more quickly – and even temporary personnel can be productive right from the start.

A choice of external or internal\* Fiery® Image Controller options give you powerful, flexible color command and control capabilities. Fiery WebTools™ let you manage remote color printing quickly and simply via standard web browsers. And Fiery Command Workstation™ gives you centralized job management and print queue control from a single location.

The optional EFI Graphic Arts Package supports accurate color proofing and paper-stock simulations as well as varied document formats, providing comprehensive halftone screening capability, editing tables, custom colors and multiple-plate PostScript separations for greater color precision and repeatability. You can manage, match and output color documents with quality and consistency to satisfy every print professional – and keep clients coming back for more.

And you can expand your bizhub PRO system with comprehensive software enhancements to handle specialized needs – server-based workflow efficiency, host-computer printing, advanced color management, imposition to create make-ready layouts, job submission to track and control printing and cost-accounting. They're all pre-matched to your bizhub PRO C6500 for smooth system integration.



**CONTROL\_SPEED\_QUALITY\_RELIABILITY\_FLEXIBILITY\_SECURITY**

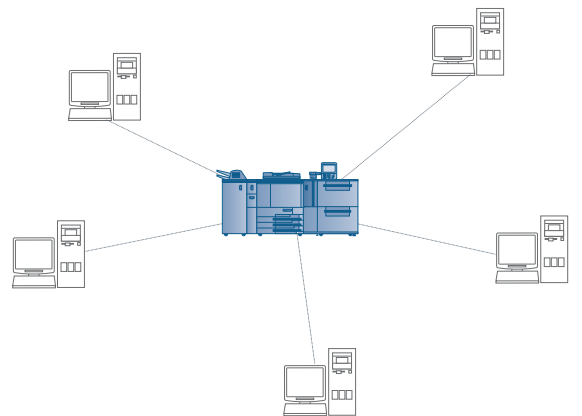
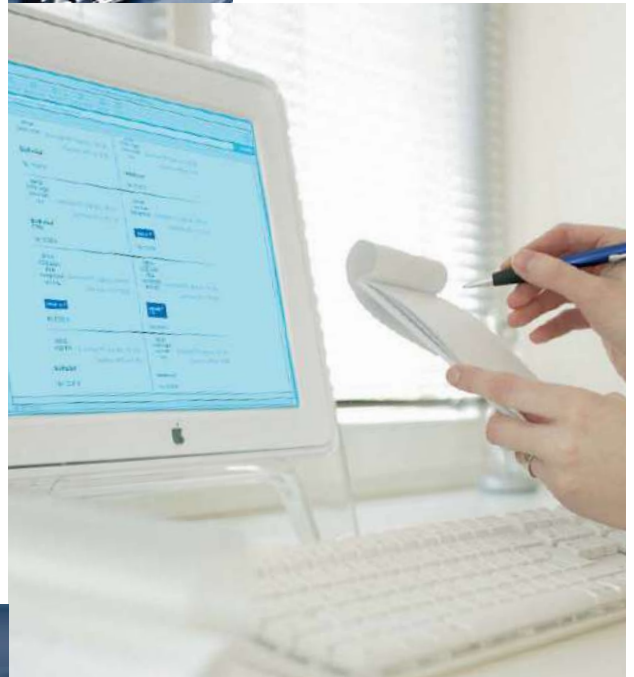


**Your choice of image controllers.** Three optional image controllers all drive the bizhub PRO C6500 at its full rated speed of 65 ppm, support finishing options and network scanning functionality – and offer sophisticated tools for color, queue and device management. External Fiery IC-303 and Creo IC-304\* controllers drive the C6500's advanced production print configurations, while the embedded Fiery IC-408\* controller drives smaller entry-level configurations.

**New Fiery System 8/8e\* Software.** Improved performance through Fiery's SmartRIP technology. New, more intuitive icon-driven print drivers are customizable to meet the needs of any user. Enhanced color management features include composite overprint for CMYK and spot colors, improved text and graphics quality and ICC v.4 support. System 8/8e\* even features enhanced security and document assembly capabilities.

**EFI Graphic Arts Package.** Comprehensive color tools include Hot Folder, Auto Trapping and Spot Color capabilities, imposition, job ticketing and accurate on-screen print preview.

**EFI Command Workstation.** The simple remote interface that lets you manage print queues, control job functions, preview thumbnails and full-screen color images, maintain and update archives, create job logs and more.





## bizhub PRO C6500

### GENERAL SPECIFICATIONS

**TYPE:**  
CONSOLE TYPE

**PRINT/COPY PROCESS:**  
LASER ELECTROSTATIC TRANSFER METHOD

**DEVELOPMENT SYSTEM:**  
DRY-TYPE DUAL COMPONENT MAGNETIC  
BRUSH DEVELOPING

**PRINT/COPY SPEED (COLOR AND B&W):**  
65 PPM (8.5" X 11")

**MAXIMUM MONTHLY DUTY CYCLE:**  
300,000 PAGES

**PRINT/COPY RESOLUTION:**  
600 X 600 DPI

**GRADATION:** 256 (8 BITS) CMYK

**MEMORY:** 1 GB

**WARM-UP TIME:** APPROX. 6.5 MINUTES

**FIRST COPY:**  
APPROX. 6.5 SECONDS (COLOR)  
APPROX. 5.0 SECONDS (B&W)

**COPY QUANTITY:**  
1 - 9,999 COPIES (COUNTDOWN,  
INTERRUPT CAPABILITY)

**MAGNIFICATION:**  
ZOOM RANGE: 25 - 400%,  
0.001% INCREMENTS

**COLOR MODES:**  
AUTO  
FULL COLOR  
BLACK & WHITE  
SINGLE COLOR

**EXPOSURE MODES:**  
TEXT (LEGIBLE TEXT)  
TEXT/PHOTO (CLEAR TEXT & HALFTONES)  
PHOTO IMAGE (OPTIMIZED FOR GRADATIONS)  
MAP (FINE EDGES, LEGIBLE TEXT)

**ORIGINAL SIZE:**  
UP TO 11" X 17" MAXIMUM

**PAPER SIZE:**  
UP TO 13" X 19.2" MAXIMUM (ALL TRAYS)

**PAPER WEIGHT:**  
UP TO 140 LB. INDEX/256 GSM  
UP TO 170 LB. INDEX/300 GSM (PF-601 TRAY 5)

**STANDARD PAPER SUPPLY:**  
500-SHEET UNIVERSAL PAPER DRAWERS (3)

**OPTIONAL PAPER SUPPLY:**  
6,000-SHEET PAPER FEED UNIT (PF-601)  
2,500-SHEET LARGE CAPACITY TRAY (LU-202)\*

**MAXIMUM PAPER CAPACITY:**  
7,500 SHEETS (TOTAL, WITH OPTIONS)

**DOCUMENT FEEDER:**  
DF-609 REVERSING DUPLEXING  
DOCUMENT FEEDER (OPTIONAL)  
CAPACITY: 100 SHEETS  
ORIGINAL SIZE: UP TO 11" X 17"  
1-SIDED, 2-SIDED ORIGINALS  
MIXED ORIGINAL DETECTION

**POWER REQUIREMENTS:**  
208V - 240V, 60HZ, 16A  
(DEDICATED LINE)

**DIMENSIONS (W X D X H):**  
31" X 39.1" X 41.63" (MACHINE ONLY)

**WEIGHT:** 794 LBS.

### BIZHUB PRO C6500 OPTIONS

FS-503 STAPLE FINISHER  
FD-501 MULTI-FOLDING UNIT  
FS-607 BOOKLET FINISHER\*  
HD-506 HARD DISK DRIVE  
HT-503 HEATER/DEHUMIDIFIER\*  
HT-504 HEATER/DEHUMIDIFIER\*  
IC-303 EXTERNAL FIERY® IMAGE CONTROLLER  
IC-304 EXTERNAL CREO® IMAGE CONTROLLER\*  
IC-408 INTERNAL FIERY® IMAGE CONTROLLER\*  
LS-501 LARGE CAPACITY STACKER  
LU-202 LARGE CAPACITY TRAY\*  
OC-506 PLATEN COVER  
PF-601 PAPER FEEDER UNIT  
PI-502 POST INSERTER\*  
PK-512 PUNCH KIT\*  
RU-503/RU-504 RELAY UNIT  
SD-501 SADDLE-STITCH FINISHER

### IC-303 EXTERNAL FIERY® IMAGE CONTROLLER SPECIFICATIONS

**PROCESSOR:**  
INTEL® PENTIUM® 4, 3.2GHZ, FSB 800MHZ

**MEMORY:**  
STANDARD: 1 GB  
MAXIMUM: 3 GB

**HARD DRIVE:** 160 GB

**SYSTEM SOFTWARE:**  
FIERY® SYSTEM 8

**PAGE DESCRIPTION LANGUAGE:**  
ADOBE POSTSCRIPT 3

**FONTS:** 136 FONTS

**PRINT DRIVERS:**  
WINDOWS 98, ME, NT 4.0, 2000, XP, 2003  
MAC OS 9.X  
OS X 10.1, 10.2 (CLASSIC MODE)  
OS X 10.2.1-10.2.3 (NATIVE MODE)  
OS X 10.2.4 AND ABOVE (NATIVE MODE)  
UNIX (SOLARIS 8 AND ABOVE)/LINUX

**INTERFACE:** 10/100/1000 BASET

**NETWORKING:**  
ETHERNET, APPLE TALK (ETHER TALK), IPX/SPX  
(NDS), TCP/IP (STATIC IP, AUTO IP), SNMP V3,  
SMB, PORT 9100 (BI-DIRECTIONAL SUPPORT),  
KERBEROS V5, NTLM V2.0, IPP, LDAP V3,  
GSSAPI, LPR-RFC, HOST RESOURCE MIB/PRINTER  
MIB/MIB-2, EMAIL FORMAT RFC822, SMTP-  
RFC821, POP3, IMAP, HTTP, HTTPS, FTP,  
EFI SDK V1.0, IP FILTERING, PORT BLOCKING,  
LDAP USER AUTHENTICATION

**SCANNING:**  
SCAN RESOLUTION: 600 DPI  
SCAN-TO-EMAIL (WITH LDAP)  
SCAN-TO-FTP  
SCAN-TO-HDD  
SCAN-TO-SMB

**UTILITIES:**  
COMMAND WORKSTATION™ WINDOWS  
EDITION V4.5  
COMMAND WORKSTATION™ MACINTOSH  
EDITION V1.3-V1.4  
FIERY® COLORWISE® PROTOOLS V3.7-V3.8  
FIERY® EMAIL PORT MONITOR  
FIERY® VDP RESOURCE MANAGER V1.2  
FIERY® PRINTER DELETE UTILITY  
FIERY® REMOTE SCAN V5.4-V5.5  
EFI HOT FOLDERS V2.2-V2.3  
FIERY® WEBTOOLS™

**OPTIONS:**  
FIERY® GRAPHIC ARTS PACKAGE (GA1)  
FIERY® GRAPHIC ARTS PACKAGE,  
PREMIUM EDITION (GA2)  
EFI PRODUCTION PRINT PACKAGE  
EFI COLOR PROFILER™ SUITE V2.0  
EFI IMPOSE V2.6  
HDD SECURITY KIT  
FACI KIT

### IC-408 EMBEDDED FIERY® IMAGE CONTROLLER SPECIFICATIONS\*

**PROCESSOR:**  
INTEL® CELERON-D®, 2.8GHZ FSB 533MHZ

**MEMORY:**  
STANDARD: 512 MB  
MAXIMUM: 1 GB

**HARD DRIVE:** 80 GB

**SYSTEM SOFTWARE:**  
FIERY® SYSTEM 8E

**PAGE DESCRIPTION LANGUAGES:**  
ADOBE® POSTSCRIPT 3

**FONTS:** 136 POSTSCRIPT FONTS

**PRINT DRIVERS:**  
WINDOWS 98, ME, NT 4.0, 2000, XP, 2003  
MAC OS 9.X  
OS X 10.1, 10.2 (CLASSIC MODE)  
OS X 10.2.1-10.2.3 (NATIVE MODE)  
OS X 10.2.4 AND ABOVE (NATIVE MODE)  
UNIX (SOLARIS 8 AND ABOVE)/LINUX

**INTERFACE:**  
10/100/1000 BASET

**NETWORKING:**  
ETHERNET, APPLE TALK (ETHER TALK), IPX/SPX  
(NDS), TCP/IP (STATIC IP, AUTO IP), SNMP V3,  
SMB, PORT 9100 (BI-DIRECTIONAL SUPPORT),  
KERBEROS V5, NTLM V2.0, IPP, LDAP V3,  
GSSAPI, LPR-RFC, HOST RESOURCE MIB/PRINTER  
MIB/MIB-2, EMAIL FORMAT RFC822, SMTP-  
RFC821, POP3, IMAP, HTTP, HTTPS, FTP,  
EFI SDK V1.0, IP FILTERING, PORT BLOCKING,  
LDAP USER AUTHENTICATION

**SCANNING:**  
SCAN RESOLUTION: 600 DPI  
SCAN-TO-EMAIL (WITH LDAP)  
SCAN-TO-FTP  
SCAN-TO-HDD (MAILBOX)  
SCAN-TO-HOLD QUEUE

**UTILITIES:**  
COMMAND WORKSTATION™ WINDOWS  
EDITION V4.5  
COMMAND WORKSTATION™ MACINTOSH  
EDITION V1.3-V1.4  
FIERY® COLORWISE® PROTOOLS V3.7-V3.8  
FIERY® EMAIL PORT MONITOR  
FIERY® VDP RESOURCE MANAGER V1.2  
FIERY® PRINTER DELETE UTILITY  
FIERY® REMOTE SCAN V5.4-V5.5  
EFI HOT FOLDERS V2.2-V2.3  
FIERY® WEBTOOLS™

**OPTIONAL SOFTWARE APPLICATIONS:**  
FIERY® GRAPHIC ARTS FEATURES: SPOT ON,  
AUTO TRAPPING, HOT FOLDERS  
EFI COLOR PROFILER™ SUITE V2.0  
EFI IMPOSE V2.6

### AVAILABLE FUNCTIONS

AUTO ZOOM  
AUTO PAPER SELECT  
AUTO LOW POWER  
AUTO RESET  
AUTO SHUT-OFF  
BOOK COPY  
BOOKLET PAGINATION  
CHAPTERS  
COLOR MODE  
COLLATE (FS-503, LS-501)  
COMBINE ORIGINALS  
COPY DENSITY  
COVER SHEET FEEDING (FS-503 W/ FD-501)  
CUSTOM SIZE IN ORIGINAL SETTING  
FOLDING (FS-503 W/ FD-501, SD-501)  
FRAME CENTER ERASURE  
IMAGE CENTERING  
IMAGE OVERLAY  
IMAGE REPEAT  
INSERT IMAGE  
INSERT SHEET  
INTERRUPT COPYING  
JOB LIST  
MANUAL SHUT-OFF  
MIXED IN ORIGINAL SETTING  
MODE MEMORY  
MULTI-PAGE ENLARGEMENT  
NEG./POS. REVERSE  
NON-IMAGE AREA ERASE  
NON-SORT (FS-503, LS-501)  
PAGE MARGIN  
PROGRAM OVERLAY  
POWER SAVE  
PROGRAM JOB  
PROOF COPY  
PUNCH (FS-503 W/ FD-501)  
RESERVE  
ROTATION  
SEPARATE SCAN MODE  
SIMPLEX/DUPLEX  
STAMP  
STAPLE (FS-503, SD-501)  
TAB PAPER  
TRIMMING (SD-501)  
UNCOLLATE (FS-503, LS-501)  
WEEKLY TIMER  
Z-FOLDED IN ORIGINAL SETTING  
ZOOM



© 2006 KONICA MINOLTA BUSINESS SOLUTIONS U.S.A., INC. All rights reserved. Reproduction in whole or in part without written permission is prohibited. Konica Minolta and The essentials of imaging are trademarks of KONICA MINOLTA HOLDINGS, INC. bizhub, bizhub PRO, and PageScope are trademarks of KONICA MINOLTA BUSINESS TECHNOLOGIES, INC. Simitri is a registered trademark of KONICA MINOLTA BUSINESS SOLUTIONS. All other brands and product names are registered trademarks or trademarks of their respective owners.

Design and specifications are subject to change without notice.

\*Some functions may require options, which may or may not be available at time of launch.



KONICA MINOLTA

KONICA MINOLTA  
BUSINESS SOLUTIONS U.S.A., INC.

100 Williams Drive  
Ramsey, NJ 07446

[www.kmbs.konicaminolta.us](http://www.kmbs.konicaminolta.us)  
[www.kmbs.konicaminolta.us/solutions](http://www.kmbs.konicaminolta.us/solutions)

Item #: C6500BRO  
9/06