

**LANIER**

**MP 4002/MP 5002**



MULTIFUNCTION B&W

*Customize workflow for one-of-a-kind performance*

*Enhance a wider range of everyday document management tasks with a versatile, black-and-white multifunctional device that offers exceptional convenience, security and efficiency*



# Designed to maximize productivity, minimize costs

Greater workloads. Fewer resources. Less time. Your business challenges are constantly changing, so choose the LANIER® MP 4002/MP 5002 digital imaging system to stay ahead of the competition. The services-led platform of these 40-ppm and 50-ppm black-and-white multifunctional devices offers a customizable control panel, access to cloud-based solutions and support for user mobility with secure mobile printing capabilities.

The powerful Lanier MP 4002/MP 5002 combines advanced copy, print, scan and fax capabilities in a sleek, intuitive design to streamline everyday document management tasks and enhance office productivity. Advanced device management integration with Lanier workflow solutions and customized interactivity support your unique business requirements. In addition, you can easily integrate the system into our Managed Document Services (MDS) strategy for productive, cost-effective performance throughout your enterprise.

## **Powerful Performance**

**The impressive Lanier MP 4002/MP 5002 delivers a wide range of advanced capabilities for reliable document management that improves workgroup productivity.**

- Print and copy up to 50 pages-per-minute for exceptional throughput to meet your busiest demands.
- Add the final touches to your documents with three finishing options, including a 2,000-Sheet Booklet Finisher.
- Use Auto Job Promotion to minimize downtime and maximize efficiency. This feature moves print jobs higher in the queue to skip "error" print jobs.

## **Flexible Printing and Network Functionality**

**Enjoy full compatibility throughout the office with a host of network capabilities engineered to enhance efficiency.**

- Print from most manufacturers' smartphones by downloading their application for convenient output when and where it's needed most.



*The Lanier MP 4002/MP 5002 is an easy-to-use multifunction device to help midsize workgroups manage everyday document-related workflow.*



# MP 4002/MP 5002



Insert a USB/SD card and print documents directly from the Lanier MP 4002/MP 5002 for incredible convenience at any time.

- Take advantage of 1 GB RAM and a 128 GB Hard Disk Drive (HDD)\* to store and manage more documents.
- Generate output at the device using a USB memory or SD card for incredible convenience and flexibility. Users can insert the card into a slot on the operation panel to begin printing in seconds—no computer is necessary.
- Ensure efficient production of reports, presentations and training materials with standard support for PCL or optional Adobe® PostScript® 3™.

## Convenient Scanning and Distribution

Improve the way your organization shares documents and simplify workflow, reduce costs and facilitate effective communications.

- Scan full-color or black-and-white originals and share them instantly with Scan-to-Email/Folder/HDD.
- Preview files on the control panel before printing from USB/SD Card for quality assurance prior to distribution.
- Access LDAP-registered directories and information, including Home Directory, quickly with one-touch operation at the device for fast, convenient scanning and easier, cost-effective administration.
- Compress file sizes of full-color scans with the High Compression PDF function and produce quality results with faster distribution.

\*Standard on SP Models.

**Job Type Details**

User ID:  Enter User ID: (Up to 8 alphanumeric [a-z,A-Z,0-9] characters)  
Create Own ID  Data1

File Name: (Up to 16 bytes (half this for 2byte) character except ["/"])  
Budget FY 14

Set Print Time

Hour:  : Minute:

Set specific print times with Scheduled Print to minimize network traffic congestion during busy office hours.

# Everything you need for every task you do

## Optimize production, distribution, security and document management in one easy-to-use system



### Inner One-Bin Tray (Optional)

Provides a cost-effective way to separate copy, print and fax output.

### Professional In-line Finishing Capabilities

Choose finishing options to design and complete end-to-end document production that encourages more productivity for more profitability. Lanier MP 4002/MP 5002 finishing options include:

#### 1,000-Sheet Finisher

Holds up to 1,000 sheets of 8.5" x 11" or smaller and 20 lb. Bond (500 sheets of 8.5" x 14" or larger) and offers automatic three-position stapling.

#### 2,000-Sheet Booklet/Saddle Stitch Finisher

Staples documents automatically to produce professional-grade booklets with a variety of staple positions and optional 2- or 3-hole punching.

#### 3,000-Sheet Multi-Tray Finisher

Enhances productivity, convenience and versatility with high-capacity trays, optional 2- or 3-hole punching and multi-position stapling for a wide range of paper weights and sizes.



1,000-Sheet Finisher



2,000-Sheet Booklet/  
Saddle Stitch Finisher



3,000-Sheet Multi-Tray  
Finisher



### Dual 550-Sheet Paper Trays

Increases productivity and efficiency by reducing paper reloads.

### Two 550-Sheet Tray Paper Bank (Optional)

Holds up to five different sizes and orientations of paper for maximum versatility.

### 2,000-Sheet (Letter-Sized) Large Capacity Tray (Optional/Not Shown)

### Over/Underhand-Grip Tray Handles and Easy-Open Trays

Ensures effortless paper loading for all users.



**100-Sheet Automatic Reversing Document Feeder (ARDF)**  
Handles multi-page and double-sided originals up to 11" x 17".

**Intuitive Programming**  
The user-friendly, adjustable control panel includes a customizable Home Screen to minimize steps and expedite operations.

**100-Sheet Stack Bypass**  
Holds a range of paper types and weights up to 58 lb. (216 gsm) Bond.

**Lanier MP 4002/MP 5002 Main Unit**  
Maximize productivity with 40/50 ppm/cpm output speeds, 600 x 600 dpi image quality and support for media up to 58 lbs. (216 gsm). Standard paper sources include two 550-sheet trays and optional paper sources, increasing total capacity to 4,400 sheets. Enhance performance with optional faxing.

**Large Capacity Tray (Optional)**  
Contains an additional 1,200 letter-sized sheets to maintain operations with minimal user intervention during large jobs.



**Easy-to-Replace Toner Cartridge**  
Ensures quick replacement of toner and minimizes maintenance time.



**Automatic Stackless Duplexing**  
Produces two-sided booklets, brochures and more while reducing paper usage by half.



**Document Server (Standard on Print/Scan configuration)**  
Stores up to 3,000 frequently used documents for instant reprinting, refaxing or redistribution.



# Move workflow and your business forward

## User-Friendly Operations

The Lanier MP 4002/MP 5002 offers a sleek, streamlined style that simplifies user interaction and accessibility to its feature-rich offerings.

- Access functions quickly and easily with the full-color, tiltable operation panel.
- Customize your personal Home Screen and display only the icons you use most frequently for fast, one-step operation.
- Assign functions and preferences with five, one-touch function keys for more effective workflow.
- Set up an external keyboard via USB to expedite operating tasks for users who are more comfortable with traditional keyboard input.

## Document Security and Integrity

The Lanier MP 4002/MP 5002 incorporates a host of state-of-the-art security features to help protect critical information at every stage of the document lifecycle.

- Overwrite all stored data on the hard disk drive and encrypt the address book, authentication information and stored documents using standard HDD\* overwrite/encryption.
- Secure and destroy latent images and data from the system's internal HDD\* with the standard DataOverwriteSecurity System (DOSS).
- Prevent unauthorized access to certain functions with password-protected and user-specific authentication.
- Store print jobs at the device until an authorized user swipes an ID card or enters ID information at the control panel to release the job.
- Stop unauthorized duplication of sensitive documents with Unauthorized Copy Control—a critical feature for workgroups that regularly handle sensitive data.

## Next-Generation Faxing

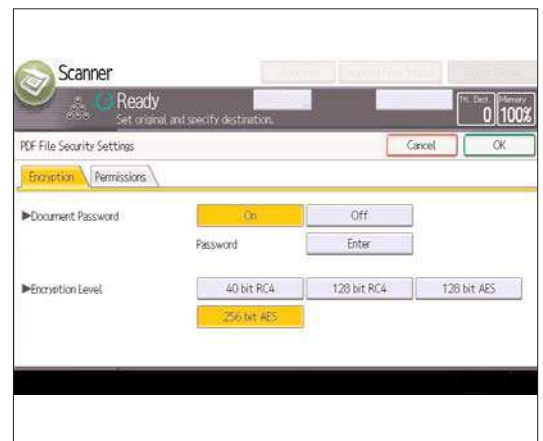
Reduce costs and minimize transmission time with impressive fax capabilities that provide a cost-effective option for distributing documents.

- Take advantage of up to three analog lines with the Super G3 modem to improve total fax capacity and minimize bottlenecks.
- Distribute documents directly to e-mail addresses and eliminate long-distance costs with Internet Fax capabilities.
- Forward inbound faxes to e-mail addresses, network folders or the system's HDD\* for easy, fast and free paperless faxing.

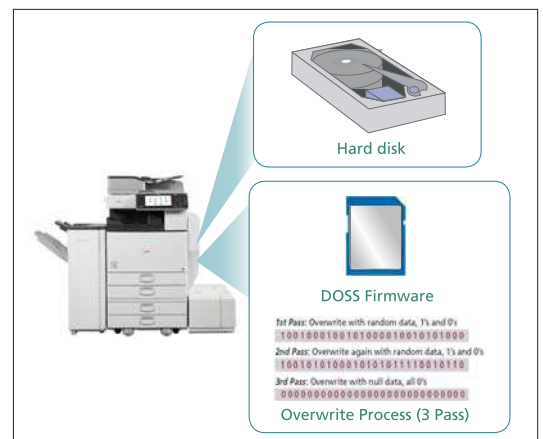
\*Standard on SP Models.



Each user can access a personal Home Screen on the operation panel that displays only frequently used icons for fast, easy access to core everyday functions.



Prevent unauthorized users from obtaining critical information with robust safety encryption algorithms, including AES256bit and SHA-2.



Protect the integrity of data stored on the hard disk drive for the life of the device with HDD\* overwrite/encryption.

## Easy, Efficient Administration

User-friendly management tools simplify administrative tasks, including maintenance and monitoring, while fostering more efficient operations.

- Reduce the amount of unnecessary output by establishing print and copy quotas for up to 1,000 individual users.
- Configure system settings and address books and check device status with Web Image Monitor.
- Ensure optimal system performance with remote firmware upgrades.
- Enhance your organization's workflow and take advantage of Lanier's Embedded Software Architecture with Lanier applications.

## User-Friendly Management

Make every administrator's life easier with intuitive tools for system management, device monitoring, troubleshooting and other tasks.

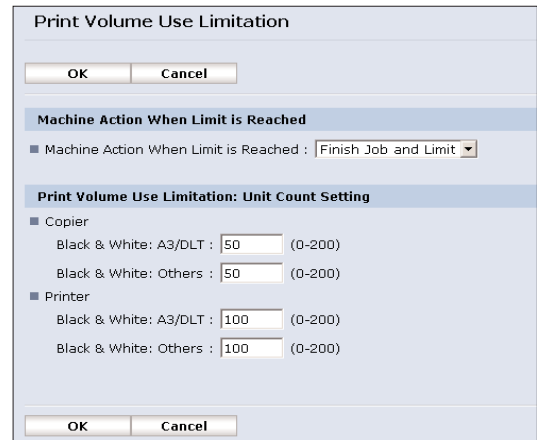
- Configure system settings, address books and more with Web Image Monitor.
- Manage multiple Lanier devices remotely with Web SmartDeviceMonitor\*.
- Request alerts for low supplies or error detection with Auto E-mail Notification.
- Automate service calls with the available @Remote™ service, which can be configured to notify service and supply alerts.

## Sustainable Efficiency

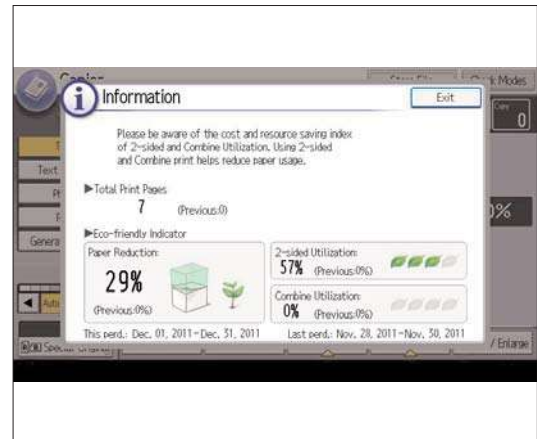
Conserve energy and paper resources while boosting productivity. Lanier has incorporated a variety of environmentally-friendly features that conserve time and money.

- Reduce paper consumption by printing double-sided documents—and reducing output by up to half—with standard easy-to-use, high-performance automatic duplexing for copying and printing.
- Start printing and copying quickly. The Lanier MP 4002/MP5002 (copier basic) recovers from Sleep Mode in less than 12/15 seconds, and 11/15 seconds for the MP 4002/MP 5002 (print/scan).

\*Available as a download from Lanier.



*Minimize total cost of ownership, promote environmental stewardship and help free up IT resources with Quota Setting.*



*Visualize cost and paper resources by displaying the Eco-Friendly indicator, showing users the percentage of paper reduction achieved.*

## The Total Green Office Solution



Lanier continues its long-standing commitment to developing office solutions with environmentally friendly and superior energy- and supply-saving features, without compromising productivity.

**LANIER****MP 4002/MP 5002****ENGINE/COPIER SPECIFICATIONS**

<b>Configuration</b>	Desktop
<b>Scanning Element</b>	One Dimension solid scanning through CCD
<b>Printing Process</b>	Twin Laser Beam Scanning & Electrophotographic Printing Dry, Dual Component
<b>Toner</b>	
<b>System Memory (RAM)</b>	Copier Basic: 512 MB RAM/1 GB RAM
<b>Min./Max.</b>	Print/Scan: 1 GB RAM
<b>Hard Disk Drive</b>	Print/Scan: 128 GB Standard 128 GB Optional for Copier Basic
<b>Document Feeder</b>	100-Sheet ARDF (Standard)
<b>Copy Resolution</b>	600 x 600 dpi
<b>Grayscale</b>	256 levels
<b>Exposure Adjustment</b>	Manual & Automatic (Standard)
<b>Quantity Indicator</b>	Up to 999
<b>Original Type</b>	Book/Sheet
<b>Maximum Original Size</b>	Up to 11" x 17"
<b>Copy Size</b>	5.5" x 8.5" to 11" x 17"
<b>Copy Type</b>	Plain Paper, Transparencies, Recycled Paper, Cardstock, Letterhead, Envelope
<b>First Copy Speed</b>	MP 4002: 4.1 seconds MP 5002: 3.5 seconds
<b>Continuous Copying Speed</b>	MP 4002: 40 copies/minute (LTR) MP 5002: 50 copies/minute (LTR)
<b>Warm-Up Time (from Main Switch On)</b>	Copier Basic: Less than 15 seconds
<b>Recovery Time from Sleep Mode</b>	Print/Scan: Less than 19 seconds Copier Basic: Less than 12/15 seconds (MP 4002/MP 5002) Print/Scan: Less than 11/15 seconds (MP 4002/MP 5002)
<b>Typical Electricity Consumption (TEC)</b>	MP 4002: 2.89kWh (Copier Basic) MP 4002: 2.87kWh (Print/Scan) MP 5002: 3.56kWh (Copier Basic) MP 5002: 3.49kWh (Print/Scan)
<b>Power Source</b>	120V/60Hz, 12A
<b>Sleep Mode</b>	Copier Basic: 1W (MP 4002/MP 5002)
<b>Power Consumption</b>	Print/Scan: 2.7W (MP 4002/MP 5002)
<b>Dimensions</b>	26.38" (W) x 26.85" (D) x 35.24" (H) (670 x 682 x 895 mm)
<b>Weight</b>	Less than 213.8 lbs. (97 kg)
<b>Standard Paper Capacity</b>	550 sheets x 2 trays
<b>Optional Paper Capacity</b>	100-Sheet Bypass Tray 550 sheets x 2 trays or 2,000 x 1; 1,200-Sheet Large Capacity Tray (LCT)
<b>Paper Size</b>	Tray 1 & 2: 7.25" x 10.5" to 11" x 17" (Executive - A3) Bypass: 5.5" x 8.5" (SEF) to 11" x 17" (A5 - A3)
<b>Paper Weight</b>	Tray 1 & 2: 16 - 57 lb. Bond/60 - 216 g/m <sup>2</sup> Bypass: 14 - 58 lb. Bond/52 - 220 g/m <sup>2</sup> Duplex: 16 - 44 lb. Bond/60 - 169 g/m <sup>2</sup>
<b>Reduction Ratios</b>	25%, 50%, 65%, 73%, 78%, 85%, 93%
<b>Enlargement Ratios</b>	121%, 129%, 155%, 200%, 400%
<b>Zoom</b>	25% to 400% in 1% increments
<b>Standard Features</b>	Auto Magnification, Auto Paper Select, Auto Tray Switch, Center/Border Erase, Chapters, Combine Mode, Cover Insertion, Date Stamp, Directional Magnification, Double Copy, Electronic/Rotate Sorting, English Preset Stamps, Bates Stamp (numbering), Full-Color WVGA Touch Screen, 25 Job Programs, Negative/Positive, OHP Slip Sheet, Page Number Stamp, Paper Designate, Sample Copy, Simple Screen, 1,000 User Codes Document Server, Stamping on Copies
<b>Requires Hard Disk Drive for Copier Basic Models</b>	

**PRINTER SPECIFICATIONS**

<b>(Standard on Print/Scan Configuration/Option on Copier Basic Configuration)</b>	
<b>Print Speed</b>	MP 4002: 40 ppm MP 5002: 50 ppm RM7035C-533 MHz
<b>CPU</b>	10BaseT/100BaseTX, USB 2.0
<b>Standard Interfaces</b>	IEEE 802.11a/b/g Wireless LAN, Bluetooth, Gigabit Ethernet, IEEE 1284
<b>Optional Interfaces</b>	Shared with Copier Memory TCP/IP, IPX/SPX
<b>Memory Capacity</b>	Windows XP/Vista, Server 2003/Server 2008/Server 2008R2 and Windows 7
<b>Network Protocol</b>	Netware Server 6.5**, UNIX; Sun Solaris, HP-UX, SCO OpenServer, RedHat Linux, IBM AIX, Mac OS, OS X 10.2 or later, SAP R/3, NDPs Gateway, IBM iSeries/AS/400 using OS/400 Host Print Transform
<b>Network Operating Systems</b>	Web Image Monitor, Embedded @Remote
<b>Utilities</b>	

www.lanier.com

Lanier Five Dedrick Place, West Caldwell, NJ 07096

©2012 Lanier is a registered trademark of Ricoh Americas Corporation. All rights reserved. All other trademarks are the property of their respective owners. The content of this document, and the appearance, features and specifications of Lanier products and services are subject to change from time to time without notice. Products are shown with optional features. While care has been taken to ensure the accuracy of this information, Lanier makes no representation or warranties about the accuracy, completeness or adequacy of the information contained herein, and shall not be liable for any errors or omissions in these materials. Actual results will vary depending upon use of the products and services, and the conditions and factors affecting performance. The only warranties for Lanier products and services are as set forth in the express warranty statements accompanying them.

<b>Page Description Languages</b>	Standard PCL 5e/6, PDF Direct Print and Adobe® PostScript® 3™/IPDS (Optional)
<b>Print Resolution</b>	Up to 600 dpi
<b>Fonts for PCL 5e/6</b>	45 Intellifonts, 13 International Fonts
<b>Fonts for PS3</b>	136 Roman Fonts
<b>Standard Features</b>	Sample/Locked/Hold/Stored Print

**SCANNER SPECIFICATIONS**

<b>(Standard on Print/Scan Configuration/Option on Copier Basic Configuration)</b>	
<b>Embedded Scanning Speed</b>	BW: 61 ipm (@200 dpi) (8.5" x 11" LEF) FC: 31 ipm (@200 dpi)
<b>Scanning Resolution</b>	Up to 600 dpi
<b>Grayscale</b>	256 levels
<b>Scan Area</b>	Up to 11" x 17"
<b>Standard Interfaces</b>	10BaseT/100BaseTX Ethernet
<b>Optional Interfaces</b>	Wireless LAN (802.11a/b/g), Gigabit Ethernet
<b>Protocol</b>	TCP/IP, SMTP, SMB, FTP, POP3, NCP**
<b>Memory Capacity</b>	Shared with Copier Memory
<b>Standard Features</b>	Embedded Scan-to-Email, HDD, Folder, URL, Color Scanning
<b>File Formats</b>	Single-Page and Multi-Page TIFF, PDF, High Compression PDF, Single-Page JPEG, Single and Multiple-Page PDF/A
**Requires Netware and Print/Scan Options	

**FAX SPECIFICATIONS**

<b>(Option)</b>	
<b>Circuit</b>	PSTN, PBX
<b>Compatibility</b>	ITU-T G3
<b>Resolution</b>	200 x 200/100 dpi (Standard) 400 x 400 dpi (Optional)
<b>Compression Method</b>	MH, MR, MMR, JBIG
<b>Scanning Speed</b>	0.90 seconds 8.5 x 11" (A4 SEF)
<b>Modem Speed</b>	33.6 Kbps with Auto Fallback
<b>Transmission Speed</b>	G3: 3 seconds per page (MMR Compression) G3: 2 seconds per page (JBIG Compression)
<b>Memory (SAF)</b>	4 MB standard (up to 320 pages) 28 MB maximum (up to 2,240 pages)
<b>Memory Backup</b>	1 hour
<b>Auto Dials</b>	2,000 with HDD
<b>Group Dials</b>	100 (max. 500 numbers per group)
<b>ID Code Programming</b>	4 digits
<b>User Function Key</b>	3 keys
<b>Standard Features</b>	Dual Access, Image Rotation, LAN-Fax Capability*, Internet Faxing (T.37)*, IP Faxing (T.38)*, Fax Forwarding to E-mail/HDD/Folder* Simultaneous operation of up to 3 lines (G3 x 3)
<b>Optional Features</b>	

**SECURITY FEATURES**

<b>(Standard on Print/Scan Configuration/Option on Copier Basic Configuration)</b>	
<b>HDD Encryption</b>	HDD Data Overwrite, SMTP over SSL, S/MIME, IPsec Communication, Locked Print Password Encryption, Encrypt Address Book, SSL Secure Socket Layer, Windows/LDAP/User Authentication, SNMP v3, Encryption of Password PDF, Encrypted PDF, IP Filtering, Quota Limit Setting

**FINISHING OPTIONS**

<b>One-Bin Tray BN3100 (Option)</b>	
<b>Paper Size</b>	5.5" x 8.5" - 11" x 17"/A5 - A3
<b>Paper Weight</b>	16 to 50 lb. Bond/60 - 169 g/m <sup>2</sup>
<b>Paper Capacity</b>	125 sheets
<b>SR3090 Finisher (Option)</b>	
<b>Paper Size</b>	5.5" x 8.5" - 11" x 17"/A5 - A3
<b>Paper Weight</b>	14 to 69 lb. Bond/52 to 260 g/m <sup>2</sup> (Proof Tray) 14 to 43 lb. Bond/52 to 163 g/m <sup>2</sup> (Shift Tray)
<b>Stack Capacity</b>	Proof Tray: 250 sheets (8.5" x 11" or smaller) 50 sheets (8.5" x 14" or larger) Shift Tray: 1,000 sheets (8.5" x 11" or smaller) 500 sheets (8.5" x 14" or larger)
<b>Staple Capacity</b>	50 sheets (8.5" x 11") 30 sheets (8.5" x 14" or larger)
<b>Staple Position</b>	1 staple/2 positions; 2 staples/1 position
<b>Dimensions</b>	10.7" (W) x 20.5" (D) x 31.2" (H) (270 x 520 x 790 mm)

<b>SR3110 Booklet Finisher (2,000-Sheet Option)</b>	
<b>Paper Size</b>	5.5" x 8.5" - 11" x 17"/A5 - A3
<b>Paper Weight</b>	14 to 43 lb. Bond/52 to 163 g/m <sup>2</sup> (Proof Tray) 14 to 68 lb. Bond/52 to 256 g/m <sup>2</sup> (Shift Tray)
<b>Stack Capacity</b>	Proof Tray: 250 sheets (8.5" x 11" or smaller) 50 sheets (8.5" x 14" or larger) Shift Tray: 2,000 sheets (8.5" x 11") LEF 1,000 sheets (8.5" x 11" - 11" x 17") SEF 100 sheets (5.5" x 8.5")
<b>Staple Capacity</b>	50 sheets (8.5" x 11") 30 sheets (8.5" x 14" or larger)
<b>Staple Position</b>	1 staple/3 positions; 2 staples/2 positions
<b>Saddle Stitch</b>	30 sheets (2 - 5 sheets) 15 sets (6 - 10 sheets) 10 sets (11 - 15 sheets)
<b>Dimensions</b>	25.9" (W) x 25.1" (D) x 37.8" (H) (657 x 613 x 960 mm)
<b>SR3120 Finisher (3,000-Sheet Option)</b>	
<b>Paper Size</b>	5.5" x 8.5" - 11" x 17"/A5 - A3
<b>Paper Weight</b>	14 to 43 lb. Bond/52 to 163 g/m <sup>2</sup> (Proof Tray) 14 to 68 lb. Bond/52 to 256 g/m <sup>2</sup> (Shift Tray)
<b>Stack Capacity</b>	Proof Tray: 250 sheets (8.5" x 11" or smaller) 50 sheets (8.5" x 14" or larger) Shift Tray: 3,000 sheets (8.5" x 11") LEF 1,500 sheets (8.5" x 11" - 11" x 17") SEF 50 sheets (8.5" x 11") 30 sheets (8.5" x 14" or larger)
<b>Staple Capacity</b>	1 staple/3 positions; 2 staples/1 position
<b>Dimensions</b>	25.9" (W) x 25.1" (D) x 37.8" (H) (657 x 613 x 960 mm)

**HARDWARE ACCESSORIES**

<b>LCIT RT3020 Side Large Capacity Tray (Option)</b>	
<b>Paper Size</b>	11" x 8.5"/A4 (LEF)
<b>Paper Weight</b>	16 to 57 lb. Bond/60 - 216 g/m <sup>2</sup>
<b>Paper Capacity</b>	1,200 sheets
<b>Dimensions</b>	13.7" (W) x 21.3" (D) x 11.4" (H) (348 x 540 x 290 mm)
<b>PB3130 Paper Feed Unit (Option)</b>	
<b>Paper Size</b>	7.25" x 10.5" - 11" x 17"/Executive - A3
<b>Paper Weight</b>	16 to 57 lb. Bond/60 - 216 g/m <sup>2</sup>
<b>Capacity</b>	550 sheets x 2
<b>Dimensions</b>	22.8" (W) x 24.8" (D) x 10.2" (H) (580 x 629 x 260 mm)
<b>LCIT PB3140 Large Capacity Tray (Option)</b>	
<b>Paper Size</b>	8.5" x 11"/A4 (LEF)
<b>Paper Weight</b>	16 to 57 lb. Bond/60 - 216 g/m <sup>2</sup>
<b>Paper Capacity</b>	2,000 sheets
<b>Dimensions</b>	22.8" (W) x 24.8" (D) x 10.2" (H) (580 x 629 x 260 mm)

**ADDITIONAL ACCESSORIES**

Bluetooth Interface Unit Type D, Bridge Unit Type BU3060, Copy Data Security Unit Type G, FAC56 Cabinet, Fax Option Type 5002, File Format Converter Type E, G3 Interface Unit Type 5002, Gigabit Ethernet Board Type A, Handset Type C5502, IEEE 1284 Interface Board Type A, IEEE 802.11a/g Interface Unit Type J, VM Card Type U\*, Key Counter Bracket Type H, Optional Counter Interface Unit Type A, PostScript3 Unit Type 5002, Punch Unit PU3030 (for SR3120 & SR3110), Fax Connection Unit Type A, Memory Unit Type B 32 MB, Side Tray Type C5502, Internal Shift Tray SH3060, Hard Disk Drive Option Type 5002, Printer/Scanner Unit Type 5002\*, SD Card for Netware Printing Type K, Browser Unit Type I, ADF Handle Type C, Platen Cover Type 3352, IPDS Unit Type 5002, Card Reader Bracket Type 3352

\*Options for Copier Basic

