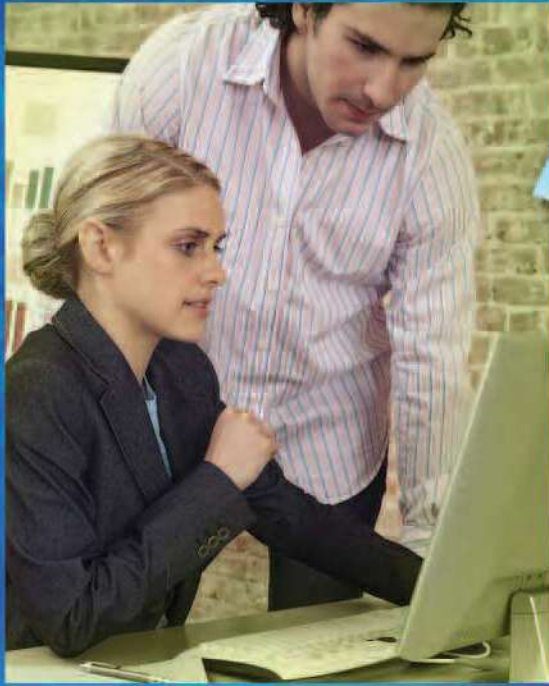


DIGITAL IMAGING SYSTEM



LANIER

**Pro 907EX/1107EX
1357EX**

Powerhouse performance, world-class reliability

These durable systems deliver the outstanding black & white image quality, versatile in-line finishing and dependable uptime you need to maximize efficiency in a wide range of production environments and enterprise workgroups



Reliable, Robust Design

Depend on the LANIER® Pro 907EX/1107EX/1357EX digital imaging systems to deliver the speed, flexibility and failsafe reliability you need to maximize productivity in production-grade environments. Whether you need to add capacity for commercial or corporate production, these powerful systems deliver precise black & white output at speeds up to 135 pages-per-minute with versatile in-line finishing. So you can turn jobs faster, increase efficiency and consistently exceed customers' expectations.

Unbeatable Reliability

Designed to run without interruption, the LANIER Pro 907EX/1107EX/1357EX ensure maximum uptime for high-volume copying, printing and scanning.

- Expect reliable operation during peak production, plus outstanding long-term reliability.
- Identify and correct multiple-sheet feeding with an innovative ultrasonic sensor that improves detection accuracy.
- Use a wider range of stocks, from thin (40 g/m²) to thick (300 g/m²) with the Air Assist feature on the DLT/LCT. It uses precise airflow to ensure fast, error-free media handling.
- Minimize downtime with Trained Customer Replaceable Units (TCRUs), which can easily be replaced by trained users without making a service call.





The LANIER Pro 907EX/1107EX/1357EX systems maximize speed, durability and finishing flexibility for demanding, high-volume workflows.



Enable your customers to choose from a full menu of folding options with the versatile Multi-Folding Unit.

Production-Class Productivity

Not only are these systems among the fastest in the market, they are equipped with the capabilities you need to maximize throughput and productivity.

- Process large or complicated files significantly faster with a 1.4 GHz CPU.
- Expect faster performance from the enhanced memory architecture, including 512 MB RAM standard (upgradeable to 1.5 GB) and a 320 GB Hard Disk Drive.
- Complete high-volume runs of large, multi-page documents without pausing to reload trays with the virtually limitless media supply.
- Expand in-house capabilities and reduce outsourcing by handling a wider variety of media sizes (up to offset-sized 13" x 19.2") and stocks (up to 300 g/m²).

Flexible Finishing

Create an incredible variety of professionally finished documents without losing valuable production time.

- Produce captivating booklets with a high-performance finisher that offers 100-Sheet stapling in two positions, 20-Sheet saddle-stitching, trimming and hole punching at speeds up to 135 pages-per-minute with extremely accurate registration.
- Give customers even more options with a new Multi-Folding Unit that offers six patterns, including Z-Fold, Half-Fold, Letter Fold-in, Letter Fold-out, Double Parallel Fold, and Gate-Fold.
- Take on high-volume finishing jobs with the High Capacity Stacker, which stacks up to 5,250 sheets. Connect two in tandem for 10,250-Sheet capacity. A roll-away cart makes it easy to transport output for nearline finishing.
- Lanier's Ring Binder Unit produces ready-to-distribute, ring-bound booklets that are seamlessly punched and bound completely on-line.

LANIER Pro 907EX/1107EX/1357EX

- Create perfect-bound books up to 400 pages (duplex), such as technical manuals, training materials and operation guides, with the in-line Perfect Binder.
- Significantly reduce labor costs when printing bound books with the GBC StreamPunch™ III, which offers on-line punching in a variety of patterns.

Simple, Easy Operation

The LANIER Pro 907EX/1107EX/1357EX systems are designed to ensure intuitive, fast-paced operation in the face of demanding workloads.

- Find copy/scan features quickly with the Super VGA Color Touch Panel Display's large graphics, intuitive menus and tilting screen for convenient viewing.
- Eliminate errors by previewing and approving thumbnails of scanned documents before final output or distribution via Scan-to-Email or Scan-to-Folder.
- Perform administrative tasks remotely with Web Image Monitor, a utility that allows you to check supply levels, change print queues and adjust settings.
- Report usage meter data automatically with the Lanier@Remote Intelligent Remote Management System, which facilitates remote device management.
- Promote multitasking and minimize time spent at the system with high-speed scanning—up to 80 sides-per-minute—for black & white and color images.

Essential Security Tools

Protect sensitive customer documents and the system itself from unauthorized use with advanced security features.

- Confirm the identity of individuals prior to system access with internal and external authentication, including options for Windows and LDAP.
- Control which features authorized users can employ via access restriction.
- Protect data from interception, analysis and tampering with encrypted transmission supported by Secure Socket Layer (SSL) technology.
- Overwrite latent hard drive data automatically after every copy, print and scan job with the optional DataOverwriteSecurity System (DOSS).
- Prevent Denial of Service (DoS) attacks, reduce the risk of virus relay and defend against user name/password theft with the Network Protocol On/Off function.
- Embed an invisible masking pattern in originals that shows up if unauthorized users attempt to copy or scan documents on any system with this same feature.



In-line ring binding eliminates the time and expense of inserting binding elements off-line, dramatically reducing labor costs.



Produce perfect-bound books at the touch of a button, up to 200 sheets (400 pages in duplex mode) with one- or three-edge knife trimming for an attractive finish.

The Total Green Office Solution



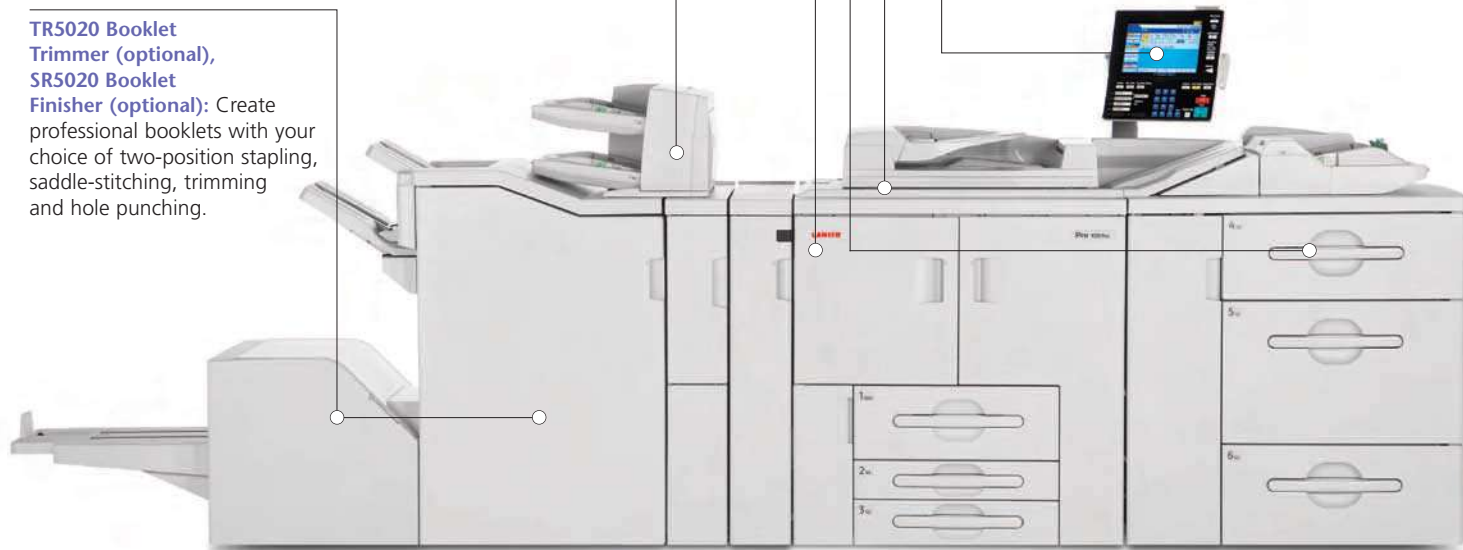
Lanier continues its long-standing commitment to developing office solutions with environmentally friendly and superior energy- and supply-saving features, without compromising productivity.

LANIER Pro 907EX/1107EX/1357EX

Base Unit: Pro 907EX: 90 ppm; 1107EX: 110 ppm; 1357EX: 135 ppm

CI5010 Cover Interposer (optional): Energize black & white documents with preprinted color covers or color insert sheets. Each tray holds up to 200 sheets, up to 13" x 19.2" in size.

TR5020 Booklet Trimmer (optional), SR5020 Booklet Finisher (optional): Create professional booklets with your choice of two-position stapling, saddle-stitching, trimming and hole punching.



RT5040 DLT Large Capacity Trays (optional): Customize the system with your choice of Large Capacity Trays for feeding all types and sizes of documents, including media sizes up to 13" x 19.2".

High-Speed Color Scanner: Scan black & white or color documents up to 80 sides-per-minute.

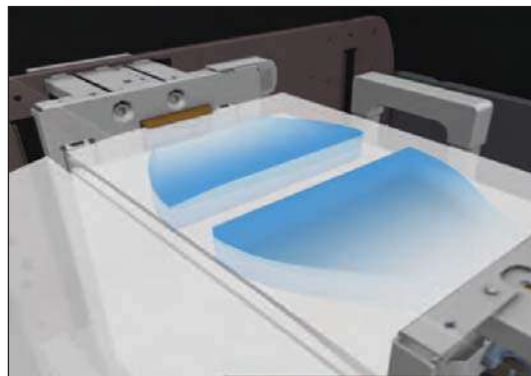
Three Controllers: Select the EFI Fiery EB-1357 controller to streamline digital workflow in controlled production environments. To maximize workflow automation, add PrintStation 0136r Connectivity for MicroPress. Or choose the Printer/Scanner Unit Type 1357 for large offices and workgroups.

RB5000 Ring Binder (optional/not shown): Produce finished ring-bound books completely on-line. Users can even open the binding to insert or remove pages at will.

SR5000 Finisher (optional/not shown): Staple up to 100 sheets in multiple positions with a 3,000-Sheet Finisher.

SK5010 High Capacity Stacker (optional/not shown): Accept high-volume finishing jobs without hesitation. This stacker holds up to 5,250 sheets and can be connected to a second stacker to hold up to 10,250 sheets.

FD5000 Multi-Fold Unit (optional/not shown): Meet a wide range of folding requirements with the versatile Multi-Fold Unit.



The Air Assist feature uses controlled airflow to handle a wider range of media stocks—from very thin to very thick—with high reliability.

Note: Available on DLT/LCT



All systems feature Trained Customer Replaceable Units (TCRUs), which trained operators can replace quickly to maximize uptime without calling for service.

GENERAL SPECIFICATIONS

Warm-Up Time	Less than 360 seconds
Media Weights	Trays 1, 2, 3: 14 lb. Bond – 80 lb. Cover (52-216 g/m ²) LT LCT Trays 4, 5: 14 lb. Bond – 80 lb. Cover (52-216 g/m ²) LT LCT Tray 6: 14 lb. Bond – 60 lb. Cover (52-163 g/m ²) DLT LCT Trays 4, 6: 14 lb. Bond – 90 lb. Cover (52-256 g/m ²) DLT LCT Tray 5: 11 lb. Bond – 100 lb. Cover (40-300 g/m ²)
Standard Media Capacity	3,000 sheets Tray 1: 2 x 1,000-Sheet Tray Tray 2: 1 x 500-Sheet Tray Tray 3: 1 x 500-Sheet Tray
Power Requirements	208 – 240V, 50/60 Hz, 20A (dedicated outlet)
Dimensions (WxDxH)	34.3" x 33.9" x 58.2"

SYSTEM SPECIFICATIONS

Speed	Pro 907EX: 90 pages-per-minute Pro 1107EX: 110 pages-per-minute Pro 1357EX: 135 pages-per-minute
Throughput Size	5.5" x 8.5" to 13" x 19.2"
Reduction/Enlargement	25% – 400% (1% increments)

SYSTEM ACCESSORIES

100-Sheet Automatic Document Feeder (Standard)	
Original Media Weights	11 – 34 lb. Bond (simplex) 14 – 28 lb. Bond (duplex)
RT5030 LT Large Capacity Tray (Optional)	
Media Sizes Supported	5.5" x 8.5" to 8.5" x 11"
Media Capacity	Tray 4: 1,000 sheets Tray 5: 1,000 sheets Tray 6: 2,550 sheets
Media Weights	Tray 4/5: 14 lb. Bond - 80 lb. Cover Tray 6: 14 lb. Bond - 60 lb. Cover
Dimensions (WxDxH)	21.2" x 28.7" x 38.6"
RT5040 DLT Large Capacity Tray (Optional)	
Media Sizes Supported	5.5" x 8.5" to 13" x 19.2"
Media Capacity	Tray 4: 1,000 sheets Tray 5: 2,000 sheets Tray 6: 1,000 sheets
Media Weights	Tray 4/6: 14 lb. Bond - 90 lb. Cover Tray 5: 11 lb. Bond - 100 lb. Cover
Dimensions (WxDxH)	34.6" x 28.8" x 38.6"
SR5000 Finisher with 100-Sheet Stapler (Optional)	
Media Weights	Proof Tray: 16 lb. Bond – 80 lb. Cover Shift Tray: 14 lb. Bond – 100 lb. Cover Z-Folding: 18 – 20 lb. Bond
Shift Tray	3,000 sheets (8.5" x 11") 1,500 sheets (8.5" x 14"/11" x 17") 1,000 sheets (13" x 19.2")
Proof Tray	500 sheets (8.5" x 11" or smaller) 250 sheets (8.5" x 14" or larger)
Staple Capacity	100 sheets (based on 20 lb. Bond)
Z-Folding	10 sheets
Hole Punching	2 or 3 holes
Dimensions (WxDxH)	31.5" x 28.7" x 38.6"
CI5010 Cover Interposer (Optional)	
Media Sizes Supported	5.5" x 8.5" to 13" x 19.2"
Media Capacity	2 x 200 sheets
Media Weights	17 – 58 lb. Bond/80 lb. Cover
Dimensions (WxDxH)	27.9" x 28.7" x 50"
BY5000 Multi Bypass Tray (Optional)	
Media Capacity	500 sheets (based on 8.5" x 11")
Media Sizes Supported	5.5" x 8.5" to 12" x 18" (RT5030) 5.5" x 8.5" to 13" x 19.2" (RT5040)
PU5000 Punch Unit (Optional)	
Punch Type	2 or 3 holes (user-selectable)
Weights Punched	16 lb. Bond – 90 lb. Index

RB5000 Ring Binder (Optional)

Media Sizes Supported	8.5" x 11" (LEF only)
Maximum Capacity	100 sheets/booklet
Ring Sizes Supported	50-Sheet/100-Sheet
Media Weight Punched	20 – 40 lb. Bond, 50 – 80 lb. Cover
Dimensions (WxDxH)	34.2" x 28.7" x 38.5"
Power Requirements	120V, 60Hz

GB5000 Perfect Binder (Optional)

Maximum Capacity	200 sheets (400 pages in duplex mode, 80 g/m ²)
Media Sizes Supported	Body: Width 10.11" – 12.59", Length 7.16" – 9"(20 – 40 lb. Bond, 50 – 60 lb. Cover) Cover: Width 10.11" – 13", Length 14.3" – 19.20" (24 – 40 lb. Bond, 50 – 100 lb. Cover) Finished Booklet Size: Width 7.9" – 11.7", Length 5.5" – 8.5" 42.91" x 31.14" x 54.60"
Dimensions (WxDxH)	42.91" x 31.14" x 54.60"
Interposer Tray	2 x 200 sheets
Power Requirements	200 – 240V, 50/60 Hz

Dimensions (WxDxH)

200 – 240V, 50/60 Hz

GBC StreamPunch III (Optional)

Punch Type	Customer-replaceable die sets
Media Size Supported	8.5" x 11", long edge feed
Dimensions (WxDxH)	12" x 28.5" x 38.5"

SR5020 Booklet Finisher (Optional)

Media Sizes Supported	Up to 13" x 19.2"
Media Weights	Proof Tray: 14 – 40 lb. Bond, 50 – 80 lb. Cover, (without Z-folding) Shift Tray: 14 lb. Bond – 100 lb. Cover (without Z-folding), 18 – 28 lb. Bond (Z-folding)
Stacking Capacity	Proof Tray: 250 sheets (letter or smaller) 50 sheets (8.5" x 14" or larger) Shift Tray: 2,500 sheets (8.5" x 11" LEF) 1,500 sheets (letter SEF, 11" x 17" SEF) 1,000 sheets (13" x 19.2" or smaller) 500 sheets (5.5" x 8.5" LEF) 100 sheets (5.5" x 8.5" SEF) 30 sheets (Z-folding media)

Staple Capacity

100 sheets (8.5" x 11", (80 g/m²)
50 sheets (8.5" x 14"
or 11" x 17" (80 g/m²)
Media Size: 8.5" x 11" – 13" x 19.2"
Media Weight: 18 – 24 lb. Bond
Staple Position: Center 2 position
Staple Capacity: 20 sheets (18 – 20 lb. Bond),
15 sheets (20 – 24 lb. Bond)

Saddle-Stitch

2 or 3 holes

FD5000 Multi-Folding (Optional)

Copy Dimensions (WxDxH)	18.3 x 28.7 x 38.6
Power Consumption	120V, 60Hz
Folding Patterns	Z-Fold, Half-Fold/Print inside, Half-Fold/Print outside, Letter Fold-in/Print inside, Letter Fold-in/Print outside, Letter Fold-out, Double Parallel/Print inside, Double Parallel/Print outside, Gate-Fold/Print inside, Gate-Fold/Print outside

Media Sizes Supported

8.5 x 11 – 13 x 19.2"

TR5020 Booklet Trimmer (Optional)

Dimensions (WxDxH)	43.9" x 35" x 21.9"
Power Consumption	120V, 60Hz
Trimming Type	One side edge
Trimming Capacity	40 sheets after folding
Media Sizes Supported	5.5" x 8.5" – 13" x 19.2"

RT5040 DLT/A3 Tray Kit* (Optional)

Dimensions (WxDxH)	19.5" x 21" x 6.9"
Media Sizes Supported	8.5" x 11", 8.5" x 14", 11" x 17"

Media Capacity

1,000 sheets
*This option is put on the Tandem LCT in Tray 1 of base unit and can feed DLT or A3 media

SK5010 High Capacity Stacker* (Optional)

Dimensions (WxDxH)	35.4" x 38.6" x 28.7"
Power Consumption	120V, 60Hz
Media Sizes Supported	Proof Tray & Shift Tray: Up to 13" x 19.2"

Media Weight

14 lb. – 100 lb. Cover
Proof Tray: 250 sheets
Shift Tray: 5,000 sheets (output jogger standard)

Roll-Away Cart

One included (second one optional)
*Decurl Unit must be connected when Large Capacity Stacker is configured

DU5000 Decurl Unit (Optional)

Dimensions (WxDxH)	6.7" x 28.7" x 39"
Power Consumption	From mainframe
Decurl Function	Pressure Adjustment: 5 steps

PRINTER SPECIFICATIONS

CPU	Intel Pentium M 1.4 GHz
Memory	512 MB standard 1.5 GB (standard + Printer/ Scanner Unit)
HDD Capacity	320 GB (320 GB x 1)
Drivers / PDL	RPCS, PCL5e/6 Optional: Adobe® PostScript 3™, Genuine IPDS
Print Resolution	1200 dpi (max.)
Fonts	PCL: TrueType: 45 Intellifonts, 13 International Fonts Optional: PS3: 136 Adobe Type 1
Standard Connectivity	100Base-TX/10Base-T Ethernet, USB 2.0
Optional Connectivity*	IEEE 1284, IEEE 802.11a/b/g Wireless LAN, Bluetooth, 1000Base-T
Network Protocol	TCP/IP, IPX/SPX, AppleTalk
Operating Systems	Windows 2000, XP, Vista, Server 2003, Server 2008 Mac OS 8.6 – 9.2.X (OS X Classic) Mac OS 10.1.X – 10.4.X Max OS 10.5.X
Utilities Supported	Web Image Monitor, Web SmartDeviceMonitor, SmartDeviceMonitor, Printer Utility for Mac, PDF Direct Printing (through DeskTopBinder), DeskTopBinder
Printer Options	IEEE 1284 Interface, IEEE 802.1a/b/g Wireless, Interface Gigabit Ethernet, Bluetooth Interface

*Only one of these options can be installed at one time

SCANNER SPECIFICATIONS

Scan Speed	80 spm in black & white or color
Optical Resolution	100/150/200/300/400/600 dpi
TWAIN Resolution	100–1200 dpi
File Formats	TIFF/JPEG/PDF and High Compression PDF
Scan-to-Email Requirement	SMTP Gateway and TCP/IP
Registered E-mail Addr.	2,000
Maximum Addresses/Send	500
Address Support via LDAP	100 addresses
Scan-to-Folder Protocol Support	SMB/FTP/NCP
Resolution	100/150/200/300/400/600 dpi
Client Folders Per Send	50 (max.)
File Types Supported	Single Page TIFF/JPEG/PDF, Multi-Page TIFF/PDF, High Compression PDF

For maximum performance and yield, we recommend using genuine Lanier parts and supplies.

www.lanier.com

Bringing Lanier Value to Your Organization
Lanier technology offers a diverse portfolio of solutions to help your organization stay competitive and move ahead. Let Lanier show you how to empower your business to improve critical processes, keep information secure, ensure compliance and promote environmental sustainability while reducing the total cost of ownership.

Lanier, Five Dedrick Place, West Caldwell, NJ 07006

©2009 Lanier is a registered trademark of Ricoh Americas Corporation. All other trademarks are the property of their respective owners. Print speed may be affected by network, application or PC performance. Specifications and external appearances are subject to change without notice. Products are shown with optional features.

