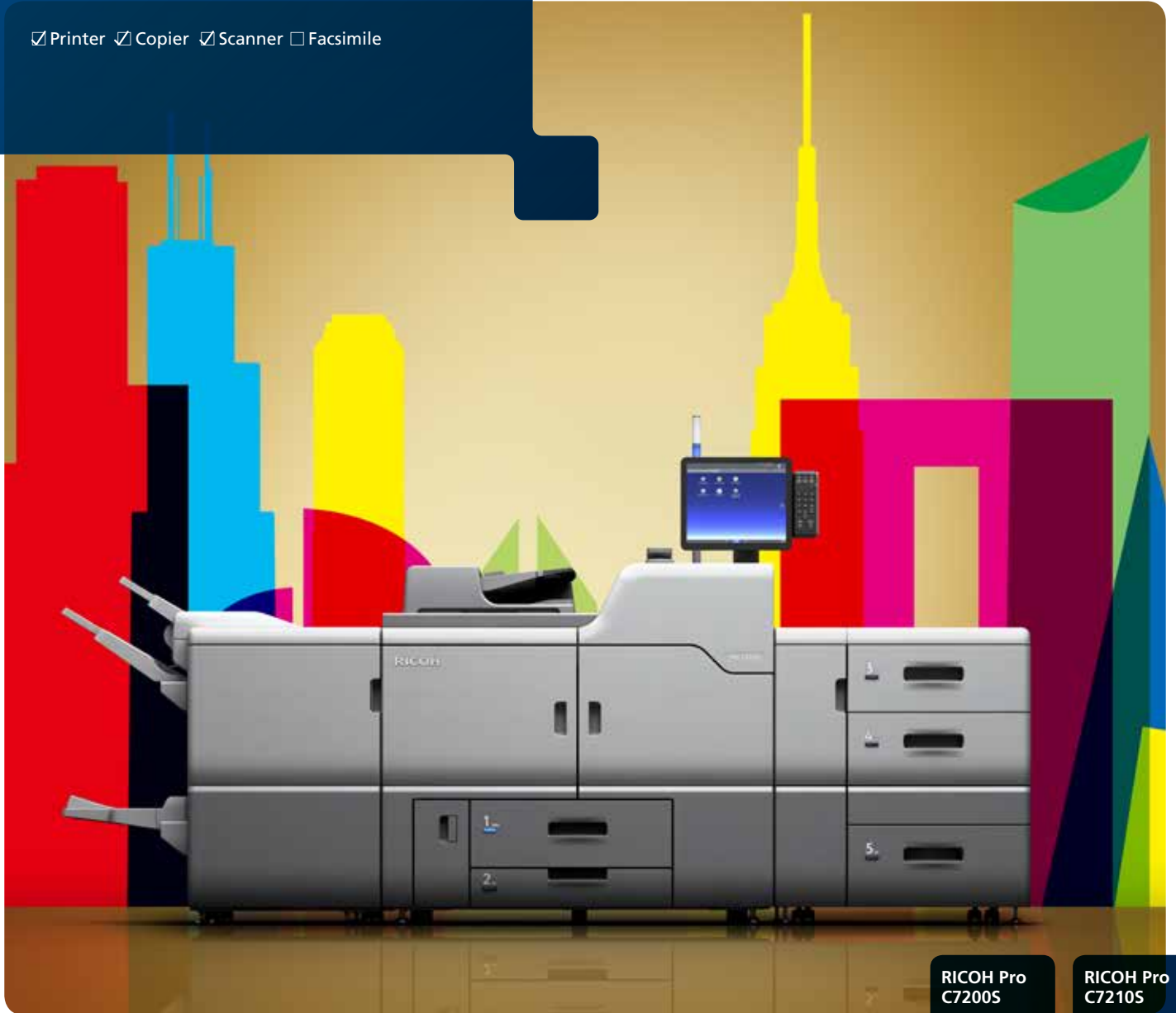


Color Sheet-Fed Printer

# RICOH Pro C7200 SERIES

Printer  Copier  Scanner  Facsimile

**RICOH**  
imagine. change.



**RICOH Pro  
C7200S**

**85** ppm  
4 Station  
MFP Model

**RICOH Pro  
C7210S**

**95** ppm  
4 Station  
MFP Model

# RICOH Pro C7200S/Pro C7210S

## SYSTEM SPECIFICATIONS

### Hardware Specification

<b>Process</b>	4-drum dry electrostatic transfer system with internal transfer belt
<b>Fusing</b>	Oil-less belt-fusing method
<b>Engine Speed</b>	Pro C7200S - 85 ppm (8.5" x 11") Pro C7210S - 95 ppm (8.5" x 11")
<b>Max Monthly Volume</b>	240K
<b>Duty Cycle</b>	Pro C7200S - 650K Pro C7210S - 800K
<b>Laser Resolution</b>	2400 x 4800 dpi VCSEL
<b>Warm-Up Time</b>	Less than 300 sec.
<b>Limitless Paper Supply</b>	Supported
<b>Paper Size</b>	13" x 19.2"/13" x 49.6" (when using Oversize Tray Option)
<b>Maximum Printable Area</b>	12.7"x18.9"/12.7" x 49.4" (when using Oversize Tray Option)
<b>Paper Weight</b>	Tray 1: 52-300g/m <sup>2</sup> Tray 2: 52-256g/m <sup>2</sup> Optional LCIT RT5110 Trays 3 and 5: 52-256g/m <sup>2</sup> Tray 4: 52-300g/m <sup>2</sup> Optional Vacuum Feed LCIT RT5120 Trays 3-8: 52 - 360g/m <sup>2</sup> Bypass Tray: 52-216g/m <sup>2</sup>
<b>Paper Type</b>	Uncoated Paper, Coated Paper (gloss and matte), Recycled Paper, Preprinted, Letterhead, Pre-punched, Tab Stock, Textured Paper, Label Paper, Carbonless Paper
<b>Paper Capacity</b>	Tray 1: 1,000 sheets x 2 (Tandem) Tray 2: 500 sheets Optional LCIT RT5110 Trays 3 and 5: 1,000 sheets each Tray 4: 2,000 sheets Optional Vacuum Feed LCIT RT5120 Trays 3-8: 2,200 sheets each Bypass Tray: 500 sheets
<b>Power Source</b>	208-240V, 16A, 50/60Hz (2 Dedicated Power Cords) Less than 5,000W
<b>Max. Power Consumption</b>	
<b>Typical Electricity Consumption (TEC)*</b>	Pro C7200S: 11.5 kWh/week Pro C7210S: 12.5Wh/week
*Typical Electricity Consumption by ENERGY STAR® program	
<b>ENERGY STAR EPEAT*</b>	Certified Gold (TotalFlow Server R-62A) Silver (E-85A and E-45A Controller)
*EPEAT only available in the US	
<b>Dimensions (W x D x H)</b>	Pro C7200S and Pro C7210S 52" x 35.8" x 48.4"
<b>Weight</b>	Pro C7200S and Pro C7210S 1,279 lbs.

### Printer Controllers

<b>EFI Color Controller E-85A</b>	Fiery FS300 Pro
<b>Fiery System Version</b>	External
<b>Configuration</b>	16GB (4GB x 4)
<b>Memory</b>	Intel Xeon E5-2637 (3.5 GHz up to 3.7 GHz with Turbo)
<b>CPU</b>	500 GB + 2 x 2 TB SATA
<b>HDD</b>	Windows 10 IoT Enterprise 2016 LTSB
<b>Operating System</b>	
<b>EFI Color Controller E-45A</b>	Fiery FS300 Pro
<b>Fiery System Version</b>	External
<b>Configuration</b>	8GB (4GB x 2)
<b>Memory</b>	Intel i5-6500 (3.2GHz up to 3.6GHz with Turbo)
<b>CPU</b>	1TB
<b>HDD</b>	Windows 10 IoT Enterprise 2016 LTSB
<b>Operating System</b>	
<b>RICOH TotalFlow Server R-62A</b>	External
<b>Configuration</b>	Standard 32GB (4GB x 8)
<b>Memory</b>	Additional 32GB (16GB x 2 (Optional))
<b>CPU</b>	Intel Processor 6th Gen Core i7
<b>HDD</b>	6700 3.4GHz
<b>Operating System</b>	3TB (1TB SATA x 3)
<b>IPDS</b>	Linux Optional

### Hardware Accessories

<b>Plockmatic HCI3500 High Capacity Interposer</b>	
<b>Dimensions (W x D x H)</b>	47.2" x 28.7" x 43"
<b>Weight</b>	551 lb.
<b>Paper Size</b>	Maximum up to 13" x 26"
<b>Paper Weight</b>	65-350gsm
<b>Paper Capacity</b>	3,500 sheets (1,750 sheets per tray)
<b>Plockmatic MPS - Oversize Sheet Stacker</b>	
<b>Dimensions (W x D x H)</b>	35.4" x 26.8" x 41.8" (width extends to max 55")
<b>Weight</b>	172 lb
<b>Power Supply</b>	100-240 V, 50-60 Hz
<b>Paper Size</b>	8.5"x11" (LEF) - 13" x 49.6"
<b>Paper Weight</b>	150-360g/m <sup>2</sup>
<b>Paper Capacity</b>	2,000 sheets

<b>Vacuum Feed Large Capacity Tray (LCIT RT5120)</b>	
<b>Dimensions (W x D x H)</b>	41.5" x 28.7" x 39.4"
<b>Weight</b>	Less than 508 lb.
<b>Power Consumption</b>	Less than 1,000 W
<b>Power Supply</b>	100-120 V
<b>Paper Size</b>	5.5" x 8.5" - 13" x 19.2"
<b>Paper Capacity</b>	4,400 sheets (2,200 sheets per tray)
<b>Paper Weight</b>	Trays 3-8: 52-360g/m <sup>2</sup>

<b>Vacuum Feed Oversize Tray Type S9</b>	
<b>Dimensions (W x D x H)</b>	When attached to the LCIT RT5120 the dimensions become 50.8" x 28.7" x 39.4"
<b>Weight</b>	Maximum up to 13" x 27.5"
<b>Paper Size</b>	Shift Tray: 52-300g/m <sup>2</sup>
<b>Paper Capacity</b>	730 sheets

<b>LCIT RT5110</b>	
<b>Dimensions (W x D x H)</b>	34.1" x 28.7" x 39.4"
<b>Weight</b>	Less than 408 lbs.
<b>Paper Size</b>	5.5" x 8.5" - 13" x 19.2"
<b>Paper Weight</b>	Trays 3 and 5: 52-256g/m <sup>2</sup> Tray 4: 52-300g/m <sup>2</sup>
<b>Paper Capacity</b>	Trays 3 and 5: 1,000 sheets each Tray 4: 2,000 sheets

<b>Multi Bypass Tray Unit (BY5020)</b>	
<b>Power Source</b>	From LCIT RT5120
<b>Paper Capacity</b>	500 sheets
<b>Paper Size</b>	5.5" x 8.5" - 13" x 19.2"
	Maximum Paper size extend up to 13" x 49.6" with Multi Bypass Oversize Tray Option
<b>Paper Weight</b>	52-216g/m <sup>2</sup>

<b>3,000 Sheets Finisher with 100 Sheets Stapler (SR5050)</b>	
<b>Capacity (Proof Tray)</b>	250 sheets (8.5" x 11" or smaller) 50 sheets (8.5" x 14" or larger)

<b>Capacity (Shift Tray)</b>	8.5" x 11" - 3,000 sheets 8.5" x 14" - 11" x 17" - 1,500 sheets 12" x 18" - 13" x 19.2" - 1,000 sheets
<b>Paper Weight</b>	Proof Tray: 52-216g/m <sup>2</sup> Shift Tray: 52-360g/m <sup>2</sup>

<b>Output Jogger Staple</b>	Standard 8.5" x 11" - 2 to 100 sheets 8.5" x 14" - 11" x 17" - 2 to 50 sheets
<b>Staple Position</b>	Top, Bottom, 2 Staples, Top Slant
<b>Dimensions (WxDxH)</b>	39.2" x 28.7" x 44.3" (996 x 730 x 1,126 mm)
<b>Weight</b>	246 lbs. (112 kg)

<b>Booklet Finisher (SR5060)</b>	
<b>Capacity (Proof Tray)</b>	250 sheets (8.5" x 11" or smaller) 50 sheets (8.5" x 14" or larger)
<b>Capacity (Shift Tray)</b>	8.5" x 11" - 2,500 sheets 8.5" x 14" - 11" x 17" - 1,500 sheets 12" x 18" - 13" x 19.2" - 1,000 sheets

<b>Output Jogger Paper Weight</b>	Standard Proof Tray: 52-216g/m <sup>2</sup> Shift Tray: 52-360g/m <sup>2</sup>
<b>Staple</b>	8.5" x 11" - 2 to 100 sheets 8.5" x 14" - 11" x 17" - 2 to 50 sheets

<b>Staple Position</b>	Top, Bottom, 2 Staples, Top Slant
<b>Saddle Stitch Staple</b>	8.5" x 11" - 13" x 19.2" - 20 sheets; Center 2 Position
<b>Dimensions (WxDxH)</b>	39.2" x 28.7" x 44.3" (996 x 730 x 1,126 mm)
<b>Weight</b>	246 lbs. (112 kg)

<b>Booklet Trimmer (TR5040)</b>	
<b>Trimming Type</b>	One Side Edge
<b>Trimming Capacity</b>	1 to 20 sheets (2 to 40 pages after folding)
<b>Paper Size</b>	Up to 13" x 19.2"
<b>Stack Capacity</b>	Up to 60 sets
<b>Limitless Stack</b>	Yes
<b>Dimensions (WxDxH)</b>	43.9" x 23.3" x 21.8" (1,115 x 591 x 555 mm)
<b>Weight</b>	165 lbs. (75 kg)

<b>Cover Interposer Tray (CI5030)</b>	
<b>Paper Size</b>	5.5" x 8.5" - 13" x 19.2"
<b>Paper Weight</b>	64-216g/m <sup>2</sup>
<b>Stack Capacity</b>	200 sheets x 2 trays
<b>Dimensions (WxDxH)</b>	21.2" x 28.7" x 50.8" (540 x 730 x 1,290 mm)
<b>Weight</b>	99 lbs. (45 kg)

<b>Ring Binder (RB5020)</b>	
<b>Paper Size</b>	8.5" x 11"/A4
<b>Paper Weight</b>	64-216g/m <sup>2</sup>
<b>Stack Capacity</b>	Binding Mode: 11 sets; Punching Mode: 100 sheets
<b>Ring Bind Capacity</b>	2 to 100 sheets
<b>Number of Holes</b>	LTR - 21, A4 - 23
<b>Ring Supply</b>	Black or White, Up to 50 or 100 sheets
<b>Tab Stock</b>	Supported
<b>Dimensions (WxDxH)</b>	34.2" x 28.7" x 39.8" (870 x 730 x 1,010 mm)
<b>Weight</b>	308 lbs. (140 kg)

<b>Perfect Binder (GB5010)</b>	
<b>Booklet Size</b>	Width: 7.9" x 11.7" (201-297 mm); Length: 5.5" x 8.5" (140-216 mm)
<b>Booklet Thickness</b>	Less than 1" (23 mm)
<b>Body Page Capacity</b>	200 sheets
<b>Cutting Directions</b>	3 Edges, 1 Edge, None
<b>Paper Weight</b>	Body Pages: 64-163g/m <sup>2</sup> Cover Pages: 90-300g/m <sup>2</sup>
<b>Stack Capacity/Booklet</b>	50 sheets: 13; 100 sheets: 7; 200 sheets: 4
<b>Dimensions (WxDxH)</b>	42.9" x 31.1" x 54.6" (1,090 x 791 x 1,387 mm)
<b>Weight</b>	770 lbs. (350 kg)

<b>6-Position Multi-Folding Unit (FD5020)</b>	
<b>Folding Type</b>	Single Sheet Mode: Z-Fold, Half-Fold/Print inside, Half-Fold/Print outside, Letter Fold-in/Print inside, Letter Fold-in/Print outside, Letter Fold-out, Double Parallel/Print inside, Double Parallel/Print outside, Gate-Fold/Print inside, Gate-Fold/Print outside
<b>Paper Size</b>	Multiple Sheets Mode: Half-Fold/Print inside, Half-Fold/Print outside, Letter Fold-in/Print inside, Letter Fold-in/Print outside, Letter Fold-out
<b>Single Sheet Mode: Z folding:</b>	8.5" x 11" - 12" x 18"; Half folding: 8.5" x 11" - 13" x 19.2"; Letter folding: 8.5" x 11" Multiple Sheets Mode: Double Parallel folding: 8.5" x 11" - 12" x 18"; Gate folding: 8.5" x 11" to 12" x 18"; Half folding: 8.5" x 11" - 13" x 19.2"; Letter Fold-out: 8.5" x 11"; Letter Fold-in: 8.5" x 11"
<b>Dimensions (WxDxH)</b>	18.5" x 28.7" x 39.4" (470 x 730 x 1,000 mm)
<b>Weight</b>	203 lbs. (92 kg)

<b>Plockmatic Booklet Maker (PBM350/PBM500)</b>	
<b>Paper Size</b>	8.5" x 11" - 12" x 18"
<b>Paper Weight</b>	64-300g/m <sup>2</sup>
<b>Set Size</b>	PBM350 - 2-35 sheets (80g/m <sup>2</sup> ) PBM500 - 2-50 sheets (80g/m <sup>2</sup> )
<b>Power Supply</b>	115 V, 60 Hz
<b>Dimensions (WxDxH)</b>	55.9" x 35.4" x 27.6" (1,420 x 970 x 700 mm)
<b>Weight</b>	297 lbs. (135 kg)

<b>GBC StreamPunch Ultra Punched Paper Sizes</b>	5.5" x 8.5" , 8.5"x11", 8.5"x14", 11"x17" , 12"x18"
<b>Punched Media Weight Range</b>	75-300g/m <sup>2</sup>
<b>Tab Punching</b>	Yes
<b>*Two-Up* Punching</b>	Yes
<b>Power Supply</b>	115 V, 60 Hz
<b>Dimensions (WxDxH)</b>	17.5" x 28.7" x 39.4" (445 x 730 x 1,000 mm)
<b>Weight</b>	220 lbs. (100 kg)

<b>High Capacity Stacker (SK5040)</b>	
<b>Dimensions (W x D x H)</b>	35.4" x 28.7" x 39.8"
<b>Weight</b>	Stacker: 264 lb., Rollaway cart: 33 lb.
<b>Power Consumption</b>	Less than 132 W
<b>Power Supply</b>	120 V, 50/60 Hz
<b>Paper Capacity</b>	1200 sheets; Proof tray: 250 sheets
<b>Paper Weight</b>	5,000 sheets; Proof tray: 250 sheets
<b>Output Jogger</b>	52-360g/m <sup>2</sup>
<b>Rollaway Cart</b>	Standard, optional additional carts available

<b>Other Options</b>	
<b>Decuri Unit DU5060, Buffer Pass Unit Type S9, Bridge Unit BU5010</b>	

<b>Consumables</b>	
<b>CMYK Toner</b>	45K prints/bottle*
<b>Waste Toner Bottle Yield:</b>	220K prints/bottle*

* Based on 8.75% coverage (LT)	
<b>TCRU Program</b>	Supported

<b>Workflow Solutions Supported</b>	
-------------------------------------	--

<b>RICOH ProcessDirector®, RICOH TotalFlow Prep, RICOH TotalFlow Production Manager, RICOH TotalFlow BatchBuilder, RICOH @Remote, EFI®DigitalStoreFront®, CGS/ ORIS Lynx &amp; Evaluate, EFI Color Profiler Suite, EFI Fiery®Graphic Arts Package Premium Edition, EFI Impose, EFI Compose, DirectSmile®, EFI Fiery Central, Objectif Lune</b>	Specifications subject to change without notice. Contact Ricoh for a list of certified media.
--	---



www.ricoh-usa.com

Ricoh USA, Inc., 70 Valley Stream Parkway, Malvern, PA 19355, 1-800-63-RICOH ©2018. Ricoh USA, Inc. All rights reserved. Ricoh® and the Ricoh logo are registered trademarks of Ricoh Company, Ltd. All other trademarks are the property of their respective owners. The content of this document, and the appearance, features and specifications of Ricoh products and services are subject to change from time to time without notice. Products are shown with optional features. While care has been taken to ensure the accuracy of this information, Ricoh makes no representation or warranties about the accuracy, completeness or adequacy of the information contained herein, and shall not be liable for any errors or omissions in these materials. Actual results will vary depending upon use of the products and services, and the conditions and factors affecting performance. The only warranties for Ricoh products and services are as set forth in the express warranty statements accompanying them.

