



# Océ VarioPrint® 135/120/110

PRISMAsync Controller

Black and White

Digital Production Press



## Excellence Redefined



# Océ VarioPrint® 135/120/110



## At-a-Glance

### Image Consistency

- True digital printing with Océ DirectPress technology
- 600 x 2400 dpi, 1200 x 1200 dpi (Enhanced)\*
- Océ ScreenPoint—Optimal quality, less operator intervention
- Superior front-to-back registration

### Ease of Use

- Océ PRISMAsync™ Controller—Intuitive, easy-to-learn interface
- Océ Paper Logic for first-time-right output
- Synchronized settings across the entire system
- Advanced Job Management and Editing
- Easy integration into existing workflows—DPLink, KDKLink

### Perfect-Fit System

- Up to 135/120/110 duplex ipm
- Post-process document insertion
- Full-bleed saddle finishing with Saddle Press Technology
- High-capacity Stacker
- Z-fold, C-fold, Accordion fold, Half-fold, Double-parallel fold

### Sustainability

- Ozone-free printing
- EPA ENERGY STAR® rated with lowest TEC value in its class
- Reduced energy usage with Océ HeatXchange
- Smart energy usage with Océ EnergyLogic

### Productivity

- Fast start-up with Océ EnergyLogic
- Plan-ahead production with intelligent job Scheduler
- Operator Attention Light\*\* displays status so production runs uninterrupted
- Maximum uptime with Printer Operation Care
- 50-300gsm duplex, all trays
- Up to 8,600-sheet capacity

\* Adobe® Postscript® 3™

\*\* Optional

## Océ VarioPrint 135 Awarded Five Stars for Image Quality by Buyers Laboratory

The Océ VarioPrint 135 has been awarded a five-star rating for image quality, job submission, ease of use, and pre-flight and job preparation by Buyers Laboratory Inc. The Océ VarioPrint 135 was subjected to intensive custom tests consisting of 87,841 A4-sized impressions spanning 10 different media types. The press demonstrated a very high level of performance across BLI's extensive test suite. This is the first time a device has received a five-star rating for image quality since BLI began the field testing of production units.

# Redefining Excellence

Raising the bar on efficiency, versatility, sustainability, and image quality. Designed from the ground up to deliver robust, reliable performance.

## The solution designed for today's demands.

Imagine a new, highly stable technology that always delivers consistent, quality images. A truly digital technology that doesn't require high temperatures and electrical charges. A high-speed production technology that produces zero ozone.

Introducing the Océ VarioPrint 135/120/110 series of monochrome digital presses, pairing Océ DirectPress technology and PRISMAsync operations management with Canon in-line finishing for a unified solution that pushes print productivity even higher.

Also known as the Océ VarioPrint DP Line, these models are based on the Océ DirectPress technology, a new, exceptionally stable imaging technology that removes variables that can negatively affect print quality and consistency. Combine this with Canon in-line finishing for an end-to-end solution that rewrites the rules for image consistency, intuitive operation, system configurability, and performance uptime. It will help you cut costs, reduce your environmental footprint, and expand your capabilities and business opportunities. It simply redefines excellence in black-and-white production printing.

## Redefining Excellence

A unified, sustainable solution designed for productivity and profitability.

### An end-to-end solution providing:

- Image consistency from job to job, machine to machine
- Ease of use with Océ PRISMAsync
- Perfect-fit system that provides speed, input, finishing, and workflow configured for your needs
- Sustainability means lower environmental impact through reduced energy consumption and ozone-free printing
- Optimal productivity via high system performance and uptime



# True End-to-End Solution

From workflow solutions through printing and finishing, the Océ VarioPrint DP Line delivers true digital production with Océ DirectPress technology.

## High production performance from one compact system

Customers want professional, finished documents, whether they're simple booklets or complex manuals. The Océ VarioPrint DP Line delivers, from preprinted inserting and high-capacity stacking, folding, and punching to stapling, booklet-making, and glue binding. All options can be integrated into one end-to-end solution for hands-off production workflows and quality documents that appeal to your customers.

## Configurable workflow support

The Océ PRISMAsync controller and user interface can be set up to meet your precise needs. Choose the processing modes that fit your current workflow and add options as needed. Depending on your production requirements, you can make the job Scheduler, job editing, and DocBox functions available to operators. And when your workflow requirements change or grow, additional Océ PRISMA software modules can be added to increase system performance and throughput.

## Easy integration with different workflows

The Océ VarioPrint DP Line is designed for full integration with Océ PRISMA solutions to accelerate your workflow, reduce costs, and attract more print volume. In mixed printing environments, the Océ PRISMAsync controller provides options that let you run jobs from Kodak® Smartboard and Xerox® FreeFlow® MakeReady workflows, without losing job ticket settings or media attributes.

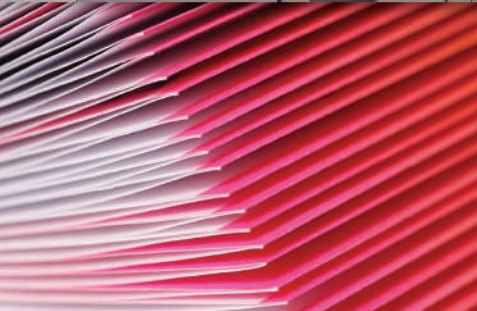
## DirectPress technology

Traditional electrophotographic technology requires multiple process steps. Océ DirectPress converts digital data into a toner image in a single step, providing a uniform and stable image. Océ DirectPress technology helps eliminate ozone emissions and, through its use of a lower fusing temperature, Océ HeatXchange, and Océ EnergyLogic, it helps reduce your business' impact on the environment. It's a highly reliable technology, designed for increased uptime in a compact footprint.



## End-to-End Solutions

A complete workflow, from start to finish, keeps you in control of your business.



# Image Consistency

Performance that makes every page a reflection of your business. With the Océ VarioPrint DP Line, you can consistently produce high-quality prints on a wide range of media across jobs, systems, and time.

## Stability and reliability

One of the hallmarks of professional-quality printing is text and images that look and feel the same throughout every job, day after day and run after run. The new Océ VarioPrint DP Line uses Océ DirectPress technology to ensure consistent, high-quality printing on a wide range of media. The result is predictable, offset-like output without streaks, striping, or banding—work that satisfies customers and keeps them coming back.

## Great output on a wide range of media

Océ DirectPress technology uses a low fusing temperature that allows you to print on a wide range of media. The image is pressed directly onto the paper, so you can use structured or textured stock.

## Advanced active registration

Duplex printed documents predominate today's monochrome print market, and customers know that tight registration is a sign of quality printing. The Océ VarioPrint DP Line features an intelligent, sensor-controlled process that enables tight front-to-back registration. This helps ensure that you can handle the high-visibility, quality-intensive jobs that your customers need.

## Black and white in a colorful world

While most documents today are created in color, not all need to print that way. But then not all black-and-white printers handle color files well, either. The Océ VarioPrint DP Line uses Océ ScreenPoint technology to reproduce color halftones and photographs as grayscale images with excellent resolution, dense black fills, and precise fine lines. Plus, you can adjust contrast and control darkness and lightness, without sacrificing any detail, so every image is sure to live up to your customers' expectations.



## Image Consistency

Océ DirectPress technology helps ensure high-quality printing on every job.

# Designed for the Times

Designed from the ground up for sustainable productivity.

The Océ VarioPrint DP Line's innovative technologies deliver true digital printing, energy efficiency, and integrated workflow that ramp up your business for profitability.

## Booklet Trimmer Modules

Used with the Saddle-Stitch Finisher to produce professional, full-bleed booklets in-line.

## Perfect Binder

Bind up to 400-page\* book-blocks to covers with hot glue, and trim three sides for perfectly square, full-bleed books.

## Saddle-Stitch Finisher

Stitches up to 25 sheets,\* up to 13"x19.2", for creation of 100-page booklets. V-fold up to five sheets without saddle-stitching.

## Folding Unit

In-line folding



C-fold



Z-fold



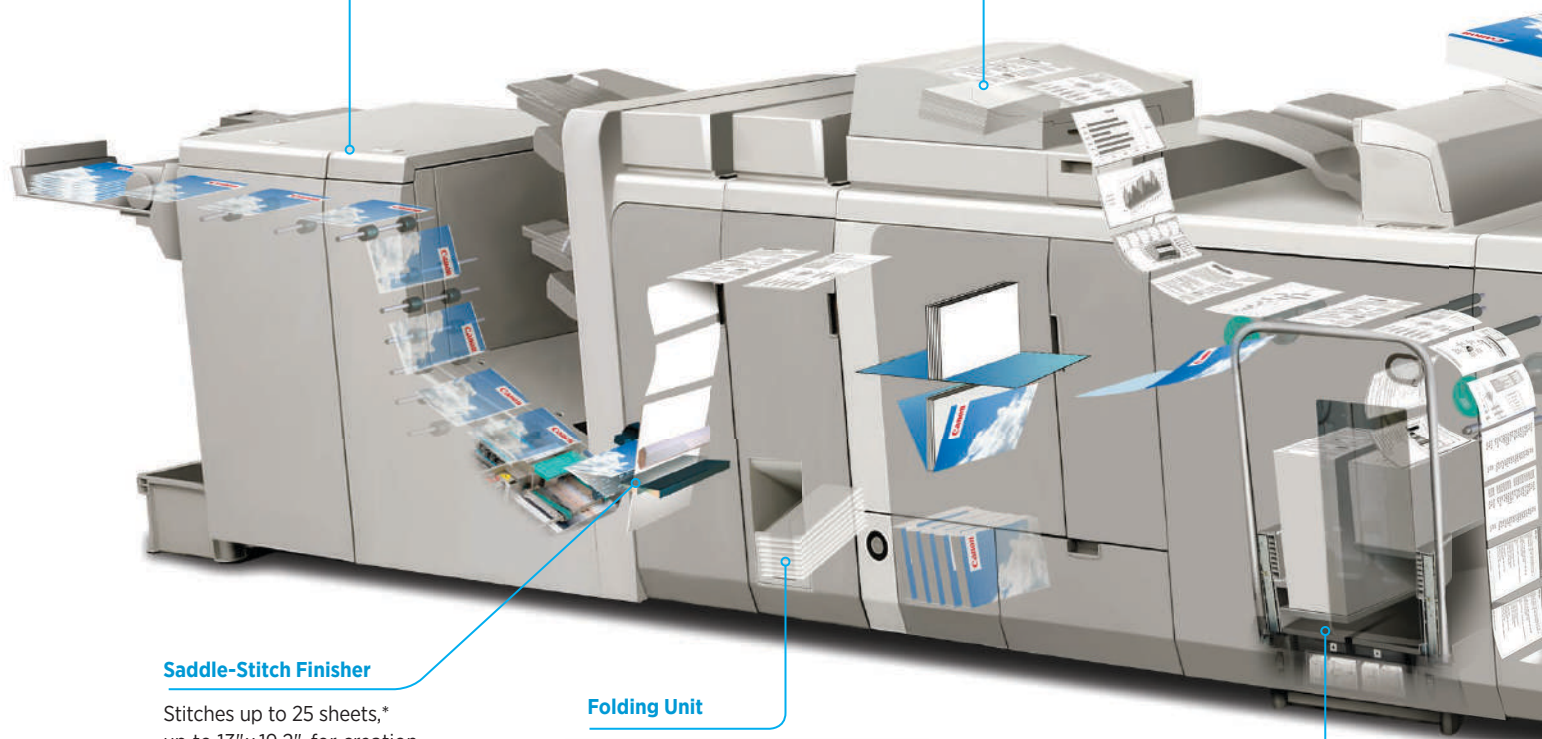
Accordion fold



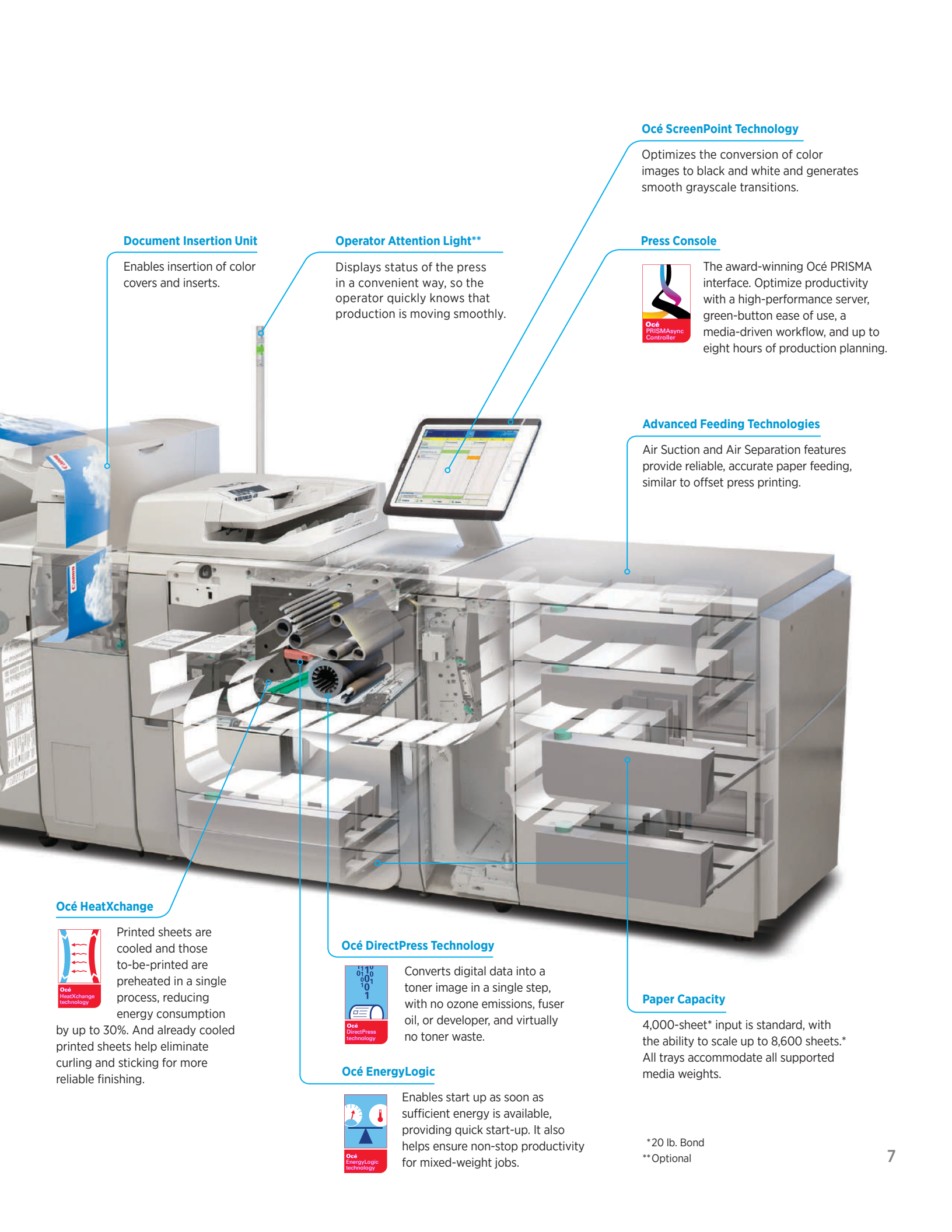
Double-parallel fold

## High-Capacity Stacker

Stack flat sheets professionally and utilize a removable dolly to transfer output to off-line finishing or shipping departments.







### Document Insertion Unit

Enables insertion of color covers and inserts.

### Operator Attention Light\*\*

Displays status of the press in a convenient way, so the operator quickly knows that production is moving smoothly.

### Océ ScreenPoint Technology

Optimizes the conversion of color images to black and white and generates smooth grayscale transitions.

### Press Console



The award-winning Océ PRISMA interface. Optimize productivity with a high-performance server, green-button ease of use, a media-driven workflow, and up to eight hours of production planning.

### Advanced Feeding Technologies

Air Suction and Air Separation features provide reliable, accurate paper feeding, similar to offset press printing.

### Océ HeatXchange



Printed sheets are cooled and those to-be-printed are preheated in a single process, reducing energy consumption by up to 30%. And already cooled printed sheets help eliminate curling and sticking for more reliable finishing.

### Océ DirectPress Technology



Converts digital data into a toner image in a single step, with no ozone emissions, fuser oil, or developer, and virtually no toner waste.

### Océ EnergyLogic



Enables start up as soon as sufficient energy is available, providing quick start-up. It also helps ensure non-stop productivity for mixed-weight jobs.

### Paper Capacity

4,000-sheet\* input is standard, with the ability to scale up to 8,600 sheets.\* All trays accommodate all supported media weights.

\*20 lb. Bond

\*\*Optional

# Ease of Use

Operators get intuitive workflow for immediate control and management of even the most complex jobs.



## Océ PRISMAsync Snapshot

- Single point of control
- Intuitive, award-winning user interface design
- State-of-the-art job and queue management
- Advanced production planning—up to eight hours
- Adobe PostScript 3, PDF 1.7, PCL 6, XPS
- Advanced editing options at job and page levels
- Uniform handling of copy, print, and scan functions

### Built for user-friendly operation

Today's customers expect better response and faster turnaround, and the VarioPrint DP Line helps make this happen. The operator panel combines the controller, user interface, and engine in one integrated concept. Its large touch-screen interface makes buttons a thing of the past, minimizing learning curves and reducing time and money spent on training. With the intuitive, modular interface, operators can perform a variety of functions effortlessly.

### Efficient production management

PRISMAsync makes handling complex print jobs easy. The unique user interface with intelligent job Scheduler displays every queued job and an overview of the day's work schedule. Jobs can be quickly rearranged as your needs or priorities change. An intuitive, visual interface groups jobs into a logical order by media type and displays up-to-the minute completion status. Visible from a distance, the Operator Attention Light displays the status of the printer. It signals upcoming operator interventions, such as media and consumable refills, giving you time to avoid interruptions in production.

### Easy and efficient media handling

A customized, define-once media catalog drives your workflow with all the printer settings needed to handle media consistently and productively. Océ Paper Logic helps ensure correct media loading, even with preprinted or prepunched stock, helping to reduce errors and waste with first-time-right output.

### Uniform, consistent operation

A single operating concept on all black-and-white and color printers driven by Océ PRISMAsync simplifies job handling for printing, scanning, and copying. This helps reduce training requirements and increases productivity, because operators can spend less time running the press and managing output, allowing the production staff to be utilized more effectively.

### Advanced job management and editing

With the optional DocBox, advanced document preparation and editing at both the job and page levels can be managed from a single point of control. This enables last-minute changes to a document at the printer, without going back to prepress, thus saving time and money.



# Perfect-Fit System

Blend speed, input, finishing, and workflow to design a system that's the ideal match for your operation.

## Performance that fits

With duplex print speeds of up to 135, 120, and 110 images per minute, the Océ VarioPrint DP Line can be easily configured to meet your requirements for printing, scanning, paper input, finishing options, and workflow. And no matter the speed, automatic duplexing is available for all media up to 300gsm. Use it to fit your needs from scanning to printing and intelligent prepress to full, in-line production. Or, replace multiple existing machines with a single, all-digital multipurpose production device.

## Multiple scanning options

Monochrome and color scanning capabilities let you offer services beyond black-and-white workflows. One-pass duplex scanner options include Scan-to-File, Scan-to-USB, Scan-to-E-mail, and Scan-to-DocBox, a repository of jobs that provides fast storage and access to jobs that may need to be rerun at a later date. Automated intelligence recognizes photo and text elements on every page, so print quality can be adjusted to deliver optimal results.

## Versatile paper feed

Four standard paper trays are conveniently placed under the engine, conserving valuable floor space. An optional four-tray module expands capacity up to 8,600 sheets for hours of unattended production and features air separation and suction feed for productive, reliable feeding. The VarioPrint DP Line offers automatic sheet-size detection in all trays and Océ Paper Logic to help ensure correct orientation of every page. When duplexing, intelligent sensors provide near-perfect registration accuracy to help ensure a high-quality appearance.

## Wide range of media

Every print provider wants to be able to use the widest possible array of substrates. Yet many light production printers are not able to run lighter or heavier-weight stocks efficiently. The Océ VarioPrint DP Line can accommodate substrates ranging from 14 lb. Bond to 110 lb. Cover (50–300gsm) in both the internal and the external paper input modules.

## Streamlined functionality

A comprehensive and versatile range of modular, in-line finishing options helps eliminate the need for costly, space-consuming off-line equipment. The VarioPrint DP Line delivers labor-saving, efficient finishing operations in a singular footprint.

Modules for saddle-stitching, stacking, folding, and in-line trimming help you to produce and finish more jobs in-line, without the need for operator intervention. This shortens the time needed to complete a job and helps you to meet even the tightest deadlines.

## Perfect-Fit System

Versatility from input to output lets you configure a system that fits your business and keeps you ahead of the pack.

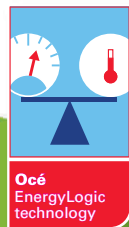


# Sustainability

The Océ VarioPrint DP Line helps reduce use of resources and your environmental footprint while staying strong, job after job.

## Cleaner, greener, and ozone-free

The Océ VarioPrint DP Line is designed to lower your environmental impact and help reduce consumption of energy and resources. The streamlined printing process—with no electrical charge used—provides a cleaner work environment, without ozone emissions, selenium, fuser oil, or developer, and virtually no toner waste or particle emissions. The result is a cleaner work environment and approach to printing. It helps you stand out as a responsible, environmentally sustainable business that can attract more orders from environmentally-conscious customers.



## Energy Efficient Technology

Unique Océ technologies lower your energy consumption while providing efficient production and a cleaner work environment.



## Closing the energy loop

Océ HeatXchange makes clever use of energy by recycling the heat used to fuse toner onto paper. Fusing heat from exiting sheets is transferred to preheat sheets entering the print path. At the same time, this cools the exiting sheets, helping to eliminate sticking and curling, and prepares the sheets for finishing. By reusing heat that would otherwise go to waste, energy consumption is reduced by up to 30%. The low fusing temperatures also allow the machine to run cooler, further reducing energy consumption.

## Smarter energy use

Océ EnergyLogic is a smart way of balancing required energy for production with available energy. This provides a fast first-print/copy-out time since the unit starts printing as soon as sufficient power is available. And for mixed media jobs, the machine will not stop, only adjust the speed if needed. The result is a little extra productivity every day, saving time as well as energy.

## First-time-right output

Easy operation, reliable media handling, and Océ Paper Logic are just some of the features that help reduce waste by ensuring first-time-right prints.

## Built to last

The Océ VarioPrint DP Line also makes better use of resources in both manufacturing and daily use. Much of the steel used in these systems is recycled and the main parts are designed to last the life of the machine. This helps to conserve resources, reduce waste, and limit the environmental impact of both logistics and service. Customers who take advantage of the Printer Operation Care program can also lower the carbon footprint associated with service while increasing machine uptime.

The absence of lasers, LEDs, and associated components helps reduce the number of parts required, lowers energy requirements, and simplifies maintenance and service, thereby increasing reliability and providing high system uptime.



# Productivity

Productive printing is more than just speed. System availability, reliability, uptime, and efficient media handling all play a part.

## Consistent performance that lets you do more

While some systems almost grind to a halt when printing on heavy media, the Océ VarioPrint DP Line adjusts for different-weight media on the fly, so you can count on nonstop performance with high print quality. Océ EnergyLogic measures the fusing requirements of incoming media and adjusts the fusing and print speed to match, so production can continue without interruption for mixed media documents.

## Start printing immediately

Océ EnergyLogic also enables the system to start printing as soon as sufficient power is available. The system gradually accelerates until it's fully warmed up.

## Intuitive workflow for nonstop productivity

Océ PRISMAsync provides intelligent job scheduling controls for uninterrupted production and smooth workload planning. The 15-inch, full-color, touch-screen operator panel provides full control for scheduling, printing, scanning, copying, and even advanced job editing. The display shows the complete production schedule, indicating when each job will be finished. It also provides color-coded alerts to inform operators of upcoming requirements, such as toner or media refills, to help keep production moving.

## Take control of your press's uptime

No service call is the best service call. You can increase your uptime by taking advantage of the Printer Operation Care program. Requiring no training, this program allows operators to replace certain parts themselves in an easy and secure way. When service intervention is needed, an innovative service concept helps ensure the shortest turnaround time.



## Built to Perform Under Pressure

Designed from the ground up to deliver sustainability and performance you can count on.



## Designed for success

The Océ VarioPrint DP Line is designed from the ground up to deliver the robust, reliable performance needed in CRDs, in-plant print shops, and busy printing businesses. Each model offers powerful features and options that let you turn demanding, time-sensitive jobs more easily and help keep your customers coming back. No matter which versatile, durable model you choose, the VarioPrint DP Line redefines excellence in black-and-white printing.



# Océ VarioPrint® 135/120/110

## Product Specifications



### MAIN UNIT

#### Marking Engine

<b>Technology:</b>	DirectPress
<b>Print Resolution:</b>	Engine: 600 x 2400 dpi, 200 lpi PCL: 600 x 600 dpi Adobe PostScript 3: 1200 x 1200 dpi (Enhanced), 600 x 2400 dpi
<b>Simplex Print Speed (ipm):</b>	120/110/100 (Letter) 63/57/52 (11" x 17")
<b>Duplex Print Speed (ipm):</b>	135/120/110 (Letter) 70/63/57 (11" x 17")
<b>First-Copy-Out Time:</b>	3.9 Seconds (Letter)
<b>Paper Size</b>	
Minimum:	See paper capacity for iPIM and ePIM
Maximum:	12.6" x 19.2"
<b>Standard Paper Capacity (iPIM):</b>	4,000 Sheets (80gsm)
	2 x Bulk Tray: 1,500 Sheets (Letter)
	2 x Multisize Tray: 500 Sheets from 5.5" x 7.17" to 12.6" x 19.2"
<b>Paper Weight:</b>	14 lb. Bond to 110 lb. Cover (50gsm to 300gsm) (All trays)
<b>Duplex:</b>	Up to 300gsm (Maximum)
<b>Feeding (iPIM):</b>	Roller-fed
<b>Power Source:</b>	208V/20A
<b>Dimensions (H x W x D):</b>	56.3" x 44.5" x 30.1" (1430mm x 1130mm x 765mm)
<b>Weight:</b>	579.8 lb. (263kg)
<b>Toner Yield:</b>	48,000 impressions**

#### Color Image Reader

(Includes Single-pass Duplex Document Feeder)

<b>Capacity:</b>	300 Sheets (80gsm)
<b>Automatic Paper Size Detection:</b>	Statement, Letter, Legal, 11" x 17"
<b>Custom Sizes (ADF):</b>	5.5" x 5.04" to 17" x 12"
<b>Resolution:</b>	Up to 600 x 600 dpi
<b>Scanning Speed</b>	
BW/Color:	Up to 120 ipm (300 x 300 dpi)
BW:	Up to 100 ipm (600 x 600 dpi)
Color:	Up to 105 ipm (600 x 300 dpi) Up to 25 ipm (600 x 600 dpi)
<b>Power Source:</b>	From Main Unit

### INPUT ACCESSORIES

#### ePIM (Optional External Paper Input Module)

<b>Feeding Technology:</b>	Air Separation, Suction-fed
<b>Standard Paper Capacity:</b>	4,600 Sheets (80 gsm) Tray 1/2: 600 Sheets Tray 3/4: 1,700 Sheets
<b>Acceptable Size:</b>	8" x 8" to 12.6" x 19.2"
<b>Paper Weight:</b>	14 lb. Bond to 110 lb. Cover (50gsm to 300gsm)
<b>Power Source:</b>	120V/15A
<b>Dimensions (H x W x D):</b>	40.9" x 38.6" x 29.5" (1040mm x 980mm x 750mm)
<b>Weight:</b>	440.9 lb. (200kg)

#### Document Insertion Unit-F1 (Optional)

<b>Paper Capacity:</b>	400 Sheets (200 x 2) (20 lb. Bond)
<b>Paper Size:</b>	13" x 19.2" (Maximum)
<b>Paper Weight:</b>	14 lb. Bond to 110 lb. Cover (50gsm to 300gsm)
<b>Dimensions (H x W x D):</b>	55.37" x 29.37" x 31.25" (1407mm x 746mm x 793mm)
<b>Weight:</b>	134 lb. (61kg)
<b>Power Source:</b>	120V/15A

### FINISHING ACCESSORIES

#### Finisher-AF1/Saddle Finisher-AF2 (Optional)

<b>Number of Trays:</b>	2/3
<b>Top Tray Capacity:</b>	Up to 3,000 Sheets (20 lb. Bond)
<b>Lower Tray Capacity:</b>	Up to 2,000 Sheets (20 lb. Bond)
<b>Saddle-Stitch Tray:</b>	30 Booklets or Limitless
<b>Staple Positions:</b>	Corner-Stapling, Double-Stapling
<b>Paper Weight</b>	
Saddle Finisher:	14 lb. Bond to 110 lb. Cover (50gsm to 300gsm)
<b>Paper Size</b>	
Stapling:	Executive, Letter-R, Letter, Legal, 11" x 17"
Sheet Stacking:	Up to 13" x 19.2"
Saddle Finisher:	Letter-R, Legal, 11" x 17", 12" x 18", custom sizes up to 13" x 19.2"
<b>Stapling Capacity:</b>	Up to 100 Sheets (Letter, Maximum)
<b>Booklet Stapling Capacity:</b>	Up to 25 Sheets, Saddle-Stitched
<b>Dimensions (H x W x D):</b>	46.5" x 31.25" x 35.37" (1180mm x 800mm x 792mm)
<b>Weight</b>	
Finisher:	287 lb. (130kg)
Saddle Finisher:	396 lb. (180kg)
<b>Power Source:</b>	120V/15A

#### Puncher Unit-BQ1

(Option for Finisher-AF1/Saddle Finisher-AF2)

<b>Paper Weight:</b>	14 lb. Bond to 73 lb. Cover (50gsm to 200gsm)
<b>Paper Size</b>	
2-Hole:	Legal, Letter-R
3-Hole:	11" x 17", Letter, Executive
<b>Punch Speed:</b>	Up to 135 ppm (Depends on Speed of Marking Engine)
<b>Weight:</b>	6.7 lb. (3kg)
<b>Power Source:</b>	From Finisher

#### High-Capacity Stacker-E1 (Optional)

<b>Offset Stack Capacity:</b>	10,000 Sheets (Letter) (20 lb. Bond)
<b>Top Tray Capacity:</b>	1,000 Sheets (20 lb. Bond)
<b>Paper Size:</b>	13" x 19.2" (Maximum)
<b>Paper Weight:</b>	14 lb. Bond to 110 lb. Cover (50gsm to 300gsm)
<b>Max. Connectivity:</b>	Up to 2 Units at Once
<b>Dimensions (H x W x D):</b>	53.62" x 39.25" x 31.25" (1362mm x 997mm x 792mm)
<b>Weight:</b>	463 lb. (210kg)
<b>Power Source:</b>	120V/15A

#### Booklet Trimmer-D1 (Optional)

<b>Margin Trimming:</b>	Fore-Edge Trim
<b>Trim Amount:</b>	0.08" to 0.78" (2mm to 20mm)
<b>Trim Thickness:</b>	100 Sheets
<b>Waste Tray Capacity:</b>	1,500 Sheets with 0.78" trim (20 lb. Bond)
<b>Paper Weight:</b>	14 lb. Bond to 110 lb. Cover (50gsm to 300gsm)
<b>Output Tray Capacity:</b>	30 Booklets
<b>Dimensions (H x W x D):</b>	41" x 62" x 30.37" (1040mm x 1575mm x 770mm)
<b>Weight:</b>	335 lb. (152kg)
<b>Power Source:</b>	From Saddle Finisher

#### Two-Knife Trimmer-A1 (Optional)

<b>Margin Trimming:</b>	Top and Bottom Trim
<b>Trim Amount:</b>	0.08" to 0.59" (2mm to 15mm)
<b>Trim Thickness:</b>	100 Sheets
<b>Waste Tray Capacity:</b>	750 Sheets (Two-sided Trimmed)
<b>Paper Weight:</b>	14 lb. Bond to 110 lb. Cover (50gsm to 300gsm)
<b>Output Tray Capacity:</b>	30 Booklets
<b>Dimensions (H x W x D):</b>	41" x 21.12" x 30.37" (1040mm x 536mm x 770mm)
<b>Weight:</b>	319 lb. (145kg)
<b>Power Source:</b>	120V/15A

#### Perfect Binder-C1 (Optional)

<b>Cutting Method:</b>	Stack Rotation 3-Direction or 1-Direction Cut
<b>Finished Book Width:</b>	8" to 11.62" (203mm x 297mm)
<b>Finished Book Length:</b>	5.37" to 8.5" (138mm x 216mm) (After 3-Direction Cut)
<b>Body Paper Weight:</b>	14 lb. Bond to 90 lb. Index (50gsm to 163gsm)
<b>Cover Weight:</b>	24 lb. Bond to 110 lb. Cover (90gsm to 300gsm)
<b>Book Thickness:</b>	10 to 200 Sheets (20 lb. Bond) (Up to 25mm)
<b>Glue Warm-Up Time:</b>	440 Seconds
<b>Trim Range:</b>	Adjustable in .0197" (0.5mm) Increments
Side:	0.26" to 1.94" (6.5mm to 49mm)
Top and Bottom:	0.52" to 3.11" (13mm to 79mm)
<b>Dimensions (H x W x D):</b>	51.25" x 36.97" x 31.12" (1300mm x 922mm x 791mm)
<b>Weight:</b>	675 lb. (306kg)
<b>Power Source:</b>	208V/15A

#### Paper Folding Unit-F1 (Optional)

<b>Double Parallel Fold:</b>	Legal, Letter-R
<b>C/Accordion Fold:</b>	Letter-R
<b>Z-Fold:</b>	11" x 17"
<b>Supported Media</b>	
<b>Weights:</b>	14 lb. Bond to 28 lb. Bond (50gsm to 105gsm)
<b>Power Source:</b>	From Finisher
<b>Dimensions (H x W x D):</b>	46.87" x 13.25" x 31.25" (1190mm x 336mm x 793mm)
<b>Weight:</b>	157 lb. (71kg)

\* Tray 3: Maximum size up to 12.6" x 17".

\*\* Estimated yield based on Letter pages at 6% coverage.

**Canon**  
*image*ANYWARE

1-800-OK-CANON  
www.usa.canon.com

Canon U.S.A., Inc.  
One Canon Plaza  
Lake Success, NY 11042

As an ENERGY STAR® Partner, Canon U.S.A., Inc. has determined that these products meet the ENERGY STAR® guidelines for energy efficiency. ENERGY STAR and the ENERGY STAR mark are registered U.S. marks. Océ is a registered trademark owned by Océ Technologies B.V. PANTONE® and other PANTONE®, LLC trademarks are the property of PANTONE®, LLC. CANON, IMAGERUNNER, and the GENUINE logo are registered trademarks of Canon Inc. in the United States and may also be registered trademarks or trademarks in other countries. IMAGEANYWARE is a trademark of Canon. All other referenced product names and marks are trademarks of their respective owners and are hereby acknowledged. Some items may not be available at this time; please check for availability. Specifications and availability subject to change without notice. All output is simulated.  
©2012 Canon U.S.A., Inc. All rights reserved.