

Ricoh Aficio MP C6000/C7500
Color Digital Imaging System
Fast, Flawless Performance

RICOH

easy

color

flexible



Ricoh Aficio MP C6000/C7500

Productivity and Quality that Leads the Pack.

To stay ahead of the competition, your organization has to move quickly, work harder, stay focused and deliver outstanding results, every single day. That's where the RICOH® Aficio® MP C6000/C7500 Series comes in. These innovative color multifunctional products (MFPs) provide an unprecedented combination of high-speed productivity, spectacular image quality and proven reliability, all with cost-effective operation. With the fastest output speeds in their class, the Ricoh Aficio MP C6000 and Ricoh Aficio MP C7500 set a new industry standard for color and black & white performance.



FastFlexibleReliableVersatile

Productivity and Convenience

You can't worry about tomorrow if you can't deliver today. That's why the Ricoh Aficio MP C6000/C7500 Series provides superior speed and reliability. So you get immediate turnaround for critical jobs plus the confidence that these systems will be ready when you need them.

- Outpace similarly equipped systems with the Ricoh Aficio MP C6000, which delivers 55 color and 60 black & white copies per minute (cpm), or the Ricoh Aficio MP C7500, which reaches speeds of 70 color and 75 black & white cpm. Both offer duplexing at 100% of rated speed.
- Access exactly what you need in a few menu selections with the large, full-color WVGA control panel. This intuitive LCD touch-screen comes standard on all Ricoh color MFPs, so you can expand the fleet without retraining users.
- Handle quick-turn jobs with a shorter warm-up time and a faster first-copy time than any other high-speed color device in this segment.
- Maximize productivity by reloading paper while the current job is still running. With all options, these systems hold up to 7,400 sheets.

Put Your Best Image Forward

Full-color documents get more attention, so they have to look amazing. Choose the Ricoh Aficio MP C6000/C7500 Series to deliver high-quality color documents that strengthen your image and impress your customers.

- Ensure exceptional image quality with true 600 dpi scanning, printing, and copying, while other Ricoh technologies provide vivid, saturated colors and sharp, elegant black & white documents.
- Expect enhanced definition, consistent coverage and density with new Ricoh toner technology. Smaller, more uniform particles result in smooth blends, solid fills and crisp text.

Dramatic Cost Savings

The Ricoh Aficio MP C6000/C7500 are complete color solutions. Eliminate outsourcing, consolidate output from multiple laser/inkjet printers and significantly reduce operating costs while increasing your profitability.

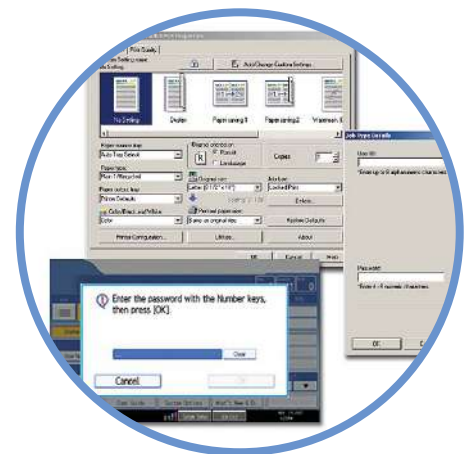
- Fast-paced offices can print full-color marketing collateral and forms on demand to minimize inventory costs and eliminate the need to discard obsolete materials.
- Graphics houses can utilize these flexible color MFPs to produce attractive layouts, client mock-ups and contact sheets quickly and cost effectively.
- Copy shops and quick printers can add the Ricoh Aficio MP C6000/C7500 to grow market share and generate new revenue streams from customers who need immediate turnaround.
- CRDs and commercial printers can use these systems as an alternative to offset for short-run color jobs, improving workflow and load-balancing.



Find critical functions quickly with the user-friendly, full-color touch-screen.



Eliminate outsourcing by producing all your full-color documents in house.



Keep sensitive documents — and the network — safe with proven security features.

SpeedQualityEfficientSecurity

Highly Versatile Performance

Engineered to integrate multiple critical functions into a single, powerful system, the Ricoh Aficio MP C6000/C7500 Series includes an extremely versatile feature set.

- Take advantage of a comprehensive array of copying, scanning, faxing and document storage capabilities, as well as multiple options for network printing.
- Select the Ricoh controller for streamlined production in general offices. Its icon-driven setup is very easy to operate, even for inexperienced users. Users can set up RPCS or PCL 5c drivers, with Adobe PS3 available as an option.

Flexible Professional Finishing

Use the Ricoh Aficio MP C6000 and the Ricoh Aficio MP C7500 to produce the full-color, professionally finished documents. Both systems can be configured with a wide range of accessories.

- Load virtually any paper grade — up to 80 lb. Cover through the Paper Trays or up to 110 lb. Cover through the Bypass.
- Maximize uptime with an optional Large Capacity Tray that accommodates paper sizes up to 12" x 18", weights up to 110 lb. Cover, and holds up to 2,000 sheets.
- Entice customers to try new formats with a Z-Fold Unit that incorporates 11" x 17" sheets into 8.5" x 11" documents, or 8.5" x 11" sheets into 5.5" x 8.5" documents.
- Choose from three finishing options that collect, collate, and staple your documents, making them ready for distribution.

Advanced Security Technology

Both MFPs employ sophisticated security features to protect confidential documents and system access from unauthorized users.

- Ensure only authorized users and administrators gain access to the system with external (Windows, LDAP) and internal (basic and user code) authentication.
- Manage color usage more effectively by restricting access to color output (or other functions, such as finishing) by individual user.
- Rely on encryption to protect address book data, documents sent over the network and remote management access. The systems also support IP security protocols to encrypt every IP packet in the data stream for high-security applications.



Your Environmental Partner



Ricoh continues its long-standing commitment to developing solutions with environmentally friendly and superior energy- and supply-saving features, without compromising productivity, including:

- Quick Start-Up (QSU) Technology
- Power-Saving Sleep Mode
- Duplex and Combine Copy Modes
- Toner Recycling
- Low Noise Levels
- Minimal Ozone Emissions
- Restriction of Hazardous Substances (RoHS) Compliant

Designed to Deliver Compelling Documents

Versatile accessories boost quality and efficiency.

Optional Cover Interposers:

Feed pre-printed sheets from one or two sources for front and back covers.

Optional Z-Fold Unit: Folds larger sheets for insertion in smaller-format documents.

100-Sheet Automatic Reversing Document Feeder (ARDF) (standard): Scans a color page in 1.0 seconds or a black & white page in 0.8 seconds.

WVGA Control Panel (standard): Program any task in seconds with the large, full-color LCD touch-screen.

Optional 3,000-Sheet Finishers: Choose from 50- or 100-Sheet stapling and 2- or 3-hole punching.

Optional 2,000-Sheet Booklet Finisher: Fold and staple documents to produce finished booklets.

Tandem 2 x 1,100-Sheet Paper Tray, Two 550-sheet Paper Trays and Bypass (standard): These MFPs hold 3,400 sheets in the standard configuration and up to 7,400 sheets with optional paper supplies.

Optional Large Capacity Trays: The A3/DLT tray holds 2,000 sheets, up to 12" x 18" and 110 lb. Cover. The A4/LT tray holds 4,000 sheets, up to 8.5" x 11" and 34 lb. Bond.

Create a configuration that delivers the right features and functions for your most demanding customers.



SR4010 Finisher: With the SR4010 Finisher, you can choose multiple staple locations on documents of up to 50 pages.



SR5000 Finisher: The SR5000 Finisher can staple up to 100 sheets and requires the Finisher Adapter Type C.



SR4020 Booklet Maker: The SR4020 can staple up to 50 sheets in multiple positions or saddle stitch up to 15 sheets (60 page booklets).



RT4000 DLT/LCT: The RT4000 DLT/LCT utilizes the system Bypass Tray for a straight paper path. This helps to reliably feed up to 110 lb. Cover stock (300 g/m²), when combined with its Air Assist Unit.

Ricoh Aficio MP C6000/C7500

System Specifications

Aficio®

Copier Specifications

Configuration	Console
Scanning Element	Flatbed with moving 3-line CCD array image-scanning
Toner	Chemical toner
System Memory	320GB (160GB x 2)
Document Feeder	Standard 100-Sheet ARDF
Copy Resolution	600 x 600 dpi
Color	256 Levels
Image Density	Manual & Automatic
Quantity Indicator	1 - 9,999
Original Type	Sheet/Book/Object
Original Size	Up to 11" x 17"
Warm-Up Time	MP C6000 <90 sec. MP C7500 <75 sec.
First-Copy Out Time	MP C6000 5.7/7.5 sec. (BW/FC) MP C7500 4.9/6.4 sec. (BW/FC)
Speed	MP C6000 60/55 cpm (BW/FC) MP C7500 75/70 cpm (BW/FC)
Standard Paper Capacity	1st Tray 1,100 x 2 550 sheets x 2nd & 3rd Trays, 100-Sheet Bypass Tray 7,400 sheet std. max capacity
Paper Size	5.5" x 8.5" to 12" x 18"
Paper Weight	14 lb. Bond - 80 lb. Cover (std. Trays) 17 lb. Bond - 90 lb. Index (Duplex) 14 lb. Bond - 110 lb. Cover (Bypass)
Magnification	7 reduction and 5 enlargement
Zoom	25% to 400% in 1% increments
Power Source	C6000/120 V/20A/60 Hz C7500/208-240V/20A/60Hz
Dimensions (WxDxH)	29.5" x 33.5" x 43.1" (excluding ARDF)
Weight	< 656.9 lb.

Copier Features

Auto Paper Selection, Auto Reduce/Enlarge, Auto Start, Auto Tray Switching, Auto Image Density, Auto Reduce and Enlarge, Duplex, User Codes, Stapling, Color Erase/Convert, Electronic Sort, Image Rotation, Rotate Sorting, Series Copy, Doc Server, User Tools, Job Presets, Book/Series/Combine, Insert Cover/SlipSheet, Chaptering, Tabs, OHP, Color/Image Creation, Sample Copy, Energy Saver, Image Adjustment, Multiple Security Options

Printer Specifications

CPU	Intel Pentium - M 1.4GHz
RAM	1,536MB (std./max)
HDD	320GB (160GB x 2)
Standard Interfaces	Ethernet (100BaseTX10 Base-T), USB2.0
Optional Interfaces	IEEE1284, Wireless LAN (IEEE802.11a/g) Bluetooth, Ethernet 1000 Base-T
Network Protocol	TCP/IP, IPX/SPX, SMB, Apple Talk
Operating Systems	Windows: 2000/XP/Vista/Server 2003, Netware; 3.12, 3.2, 4.1, 4.11, 5.0, 5.1, 6, 6.5, Unix, Sun Solaris, HP-UX, SCO OpenServer, RedHat Linux, IBM AIX. MAC: OS 8.6 - 9.2x, OS X 10.1 or later
PD/L	RPCS, PCL5c, PCL6, Adobe PS3 (optional)
Print Resolution	600 dpi
Fonts for PCL	35 Intellifonts, 10 TrueType Fonts, International Fonts: 13 Intellifonts
Fonts for PostScript	136 Adobe PostScript Type1 Fonts

Scanner Specifications

Scanning Resolution	Up to 600 dpi
Scan Area	Up to 11" x 17"
Scan Speed	81/69 ipm (BW/FC)
Compression	BW/Binary - TIFF MH/MR/MMR Full Color/Grayscale JPEG (5 levels)
Standard Interfaces	10BaseT/100BaseTX, Wireless LAN
Scanner Features	BW/OCR, BW/FC Photo, BW/FC Text, Auto Color, Auto Density, Image Rotation, Mixed Size, SADF Batch

Scan-To Destinations

Scan-to-Email
Scan-to-Folder
Scan-to-URL
TWAIN Scanning

Scan-To-Email

Authentication	SMTP, POP before SMTP
Resolution	Default 200 dpi to 600 dpi
Register E-mail	Max. 2,000 addresses
Addresses in HDD	
Register Group	Max. 500 addresses
Addresses in HDD	
LDAP	Yes, up to five LDAP Servers
File Type	Single/Multi-Page PDF, Single/ Multi- Page TIFF, High Comp. PDF
File Size	128 - 102,400 KB*
*If file exceeds size, It will be divided into multiple e-mails.	

Scan-To-Folder

Protocol Support	SMB, FTP, NCP
Security	Client folder log-in, Encryption of name and password during trans.
Resolution	Default 200 dpi to 600 dpi
Client Folder	Max. 2,000
Addresses in HDD	
Group Addresses	Max. 100 destinations
Size Restriction	None
File Type	Single/Multi-Page PDF, Single/ Multi- Page TIFF, High Comp. PDF

Document Server Specifications (Standard)

HDD Capacity	191.8GB
Max. Stored Documents	3,000
Max. Pages per Document	2,000
Max. Stored Pages	15,000

Fax Specifications (Optional)

Circuit	PSTN, PBX
Compatibility	ITU-T (CCITT) G3, Additional G3 optional
Resolution	200 x 100/200 dpi (400 dpi w/opt. SAF memory)
Compression Method	MH, MR, MMR, JBIG
Scanning Speed	0.5 sec
Modem Speed	33.6 Kbps - 2,400 bps
Transmission Speed	G3: Approx 2 sec.
Memory Backup	1 Hour
Quick/Speed Dials	2,000 numbers
Group Dials	100 groups (500 per group)
Energy Saver	Standard

Accessories

RT4000 DLT/LCT

Paper Capacity	2,000 Sheets
Paper Size	up to 12" x 18"
Paper Weight	14 lb. - 110 lb. Cover
Size	38.1" x 28" x 29.3"
Weight	192 lbs.

RT43/LCT

Paper Capacity	4,000 Sheets
Paper Size	8.5" x 11"
Paper Weight	14 lb. - 34 lb. Bond
Size	12" x 18" x 26"
Weight	44 lbs

CS391 9-Bin Mailbox

Number of Bins	9
Stack Capacity of Bins	100 Sheets
Paper Size	5.5" x 8.5" - 11" x 17"
Paper Weight	14 lb. - 34 lb. Bond
Size	21" x 24" x 26"
Weight	33 lbs.

Z-Fold Unit

Paper Size	8.5" x 11" and 11" x 17"
Paper Weight	17 lb. - 20 lb. Bond
Size	7" x 24" x 38"
Weight	121 lbs.

2 Source Cover Interposer

Paper Size	5.5" x 8.5" - 12" x 18"
Paper Weight	17 lb. Bond - 110 lb. Index
Size	28" x 29" x 50"
Weight	99 lbs.

SR5000 100-Sheet Staple Finisher**

Capacity (Proof Tray)	500 Sheets (8.5" x 11" or smaller) 250 Sheets (8.5" x 14" or larger)
Paper Size	5.5" x 8.5" - 12" x 18"
Capacity (Shift Tray)	8.5" x 11" - 3,000 Sheets 8.5" x 14" - 11" x 17" - 1,500 Sheets 12" x 18" - 1,000 Sheets
Paper Weight	14 lb. Bond - 110 lb. Cover
Staple	8.5" x 11" - 100 Pages 8.5" x 14" - 11" x 17" - 50 Pages 31" x 29" x 39"
Size	165 lbs.
Weight	**SR5000 must include Finisher Adapter Type C.

SR4010 50-Sheet Staple Finisher

Capacity (Proof Tray)	250 Sheets (8.5" x 11" or smaller) 50 Sheets (8.5" x 14" or larger)
Paper Size	5.5" x 8.5" - 12" x 18"
Capacity (Shift Tray)	8.5" x 11" - 3,000 Sheets 8.5" x 14" - 11" x 17" - 1,500 Sheets
Paper Weight	14 lb. Bond- 110 lb. Cover
Staple	8.5" x 11" - 50 Pages 8.5" x 14" - 11" x 17" - 30 Pages 26" x 24" x 38"
Size	119 lbs.
Weight	

SR4020 Booklet Maker

Capacity (Proof Tray)	250 Sheets (8.5" x 11" or smaller) 50 Sheets (8.5" x 14" or larger)
Paper Size	5.5" x 8.5" - 12" x 18"
Capacity (Shift Tray)	8.5" x 11" - 2,000 Sheets 8.5" x 14" - 11" x 17" - 1,000 Sheets
Paper Weight	14 lb. Bond - 110 lb. Cover
Staple	8.5" x 11" - 50 Pages 8.5" x 14" - 11" x 17" - 30 Pages
Saddle Stitch Staple***	8.5" x 11" - 12" x 18" - 15 Pages
Size	26" x 24" x 38"
Weight	139 lbs.
***Paper weight for saddle stitch stapling is 28 lb. Bond max.	

Additional Accessories

Punch Unit for SR5000
Punch Unit for SR4010/4020
Jogger Option for 4010/4020
Legal Tray for RT43 LCT Type 1075
11" x 17" Tray Type 2105
Copy Connector Kit Type 3260
Tab Sheet Unit Type 3260
File Format Converter Type E
HDD Overwrite Security Kit Type H
Copy Data Security Kit Type F
HDD Encryption Unit Type A
Adobe PostScript3 Type C7500
IEEE802.11a/g Type J
IEEE1284 Type A
Bluetooth Interface Unit Type 3245
Browser Unit Type D
Java VM Card Type F
G3 Interface Kit Type C7500
Key Counter Bracket Type 1027
Reader Key Card Bracket Type B
Key Card I/F Unit Type A
Gigabit Ethernet Type B

RICOH
www.ricoh-usa.com

Ricoh Americas Corporation, Five Dedrick Place, West Caldwell, NJ 07006
Ricoh® and the Ricoh Logo are registered trademarks of Ricoh Company, Ltd. Windows® and Windows® 95/98/Me/NT4.0/2000/XP/Vista are registered trademarks of Microsoft Corporation. Macintosh®, Mac® OS and AppleTalk® are registered trademarks of Apple Computer, Inc. Adobe® and PostScript® are registered trademarks of Adobe Systems, Inc. PCL® is a registered trademark of Hewlett-Packard Company. RPCS® is a trademark of Ricoh Company, Ltd. All other trademarks are the property of their respective owners. Print speed may be affected by network, application or PC performance. Specifications and external appearances are subject to change without notice. Products are shown with optional features.

Printed in U.S.A. on recycled paper because Ricoh cares.

R2597

