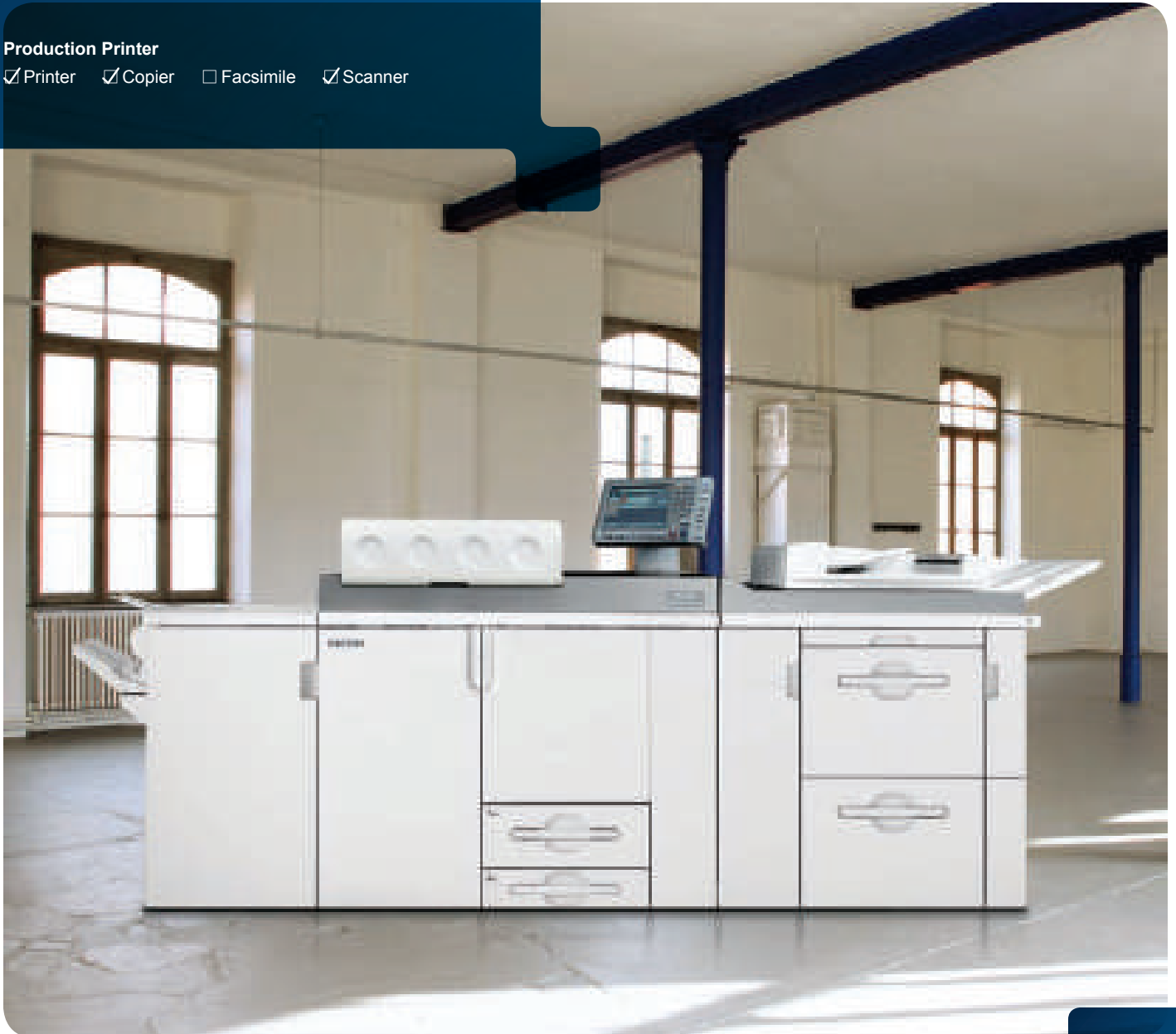


Ricoh Pro C901/C901s Graphic Arts +

Production Printer

Printer Copier Facsimile Scanner



90
ppm
monochrome
and full-color

The power to meet any high-volume challenge

Trust the RICOH® Pro C901/C901s Graphic Arts + to deliver exceptional quality and performance no matter how large or complex your applications. Robust engine construction provides the reliability and durability your production-class environment needs. Wide media versatility and professional in-line finishing options expand the range of jobs that you can accept. Powerful EFI Fiery print controllers offer advanced color and job management tools to execute sophisticated document assembly and VDP workflows with ease. The RICOH Pro C901s adds integrated full-color scanning, copying, and document storage to meet image capture and print-on-demand requirements. Both systems also employ Ricoh's next-generation oil-free imaging technologies to produce output with near-offset quality while minimizing costs.

The RICOH Pro C901/C901s Graphic Arts + — it's up to any challenge.



Maximum productivity for high-volume environments

Quality, flexibility and productivity

Print at 90 ppm regardless of media type, weight or when duplexing — and always at 1200 x 1200 dpi (productivity may be affected with paper weights between 300–350 g/m²). Ricoh's PxP™ chemical toners and oil-free fusing technology deliver near-offset results with smaller, more uniform toner particles for sharper images and better fills with a matte finish. Quickly replace high-capacity toner bottles and reload paper trays while running for uninterrupted performance. Achieve consistent image quality with advanced image stabilization, single direction development, mechanical paper registration, enhanced fusing technologies, automatic calibration adjustments, and more.



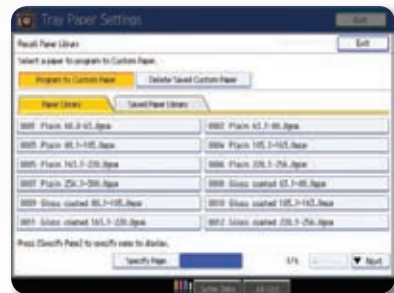
Wide variety of media handling features

Execute full-bleed printing with support for media up to 13" x 19". Expand capacity with up to 7 media pick points and a maximum of 11,000 sheets. Create durable directmail, cards, menus, and booklet covers with support for heavy and textured media — even duplex onto stocks up to 350 g/m². The new Paper Library feature lets you apply settings by selecting a preset or custom media type to optimize quality and minimize mistakes (integrates with Fiery Paper Catalog on a connected EFI controller). Ensure precise paper feeding with Air-Assist Feeding technology while built-in De-Curling, Paper Registration, and Skew Control provide accurate registration. Configure your system with professional in-line finishing options to fully automate binding, punching, and stacking for up to 13,000 pages.



Production-class construction and performance

Handle the toughest workloads and diverse workflows with maximum reliability and dependability. The welded steel frame provides exceptional strength to handle up to 350,000 impressions per month. Reduce costs and maintenance requirements with long-lasting supplies and consumables. Each toner bottle is replaced individually in seconds and yields up to 67,000 pages at a realistic 8.75% coverage factor. Operate at peak efficiency with Trained Customer Replaceable Units (TCRUs) that maximize system uptime by enabling trained customers to replace key imaging components without waiting for service. Process volumes of hardcopy originals with a full suite of image-capture, digital copying, print-on-demand, and electronic document distribution functions. Command attention with an elevated Operator Call Light that's visible from any point of view.



Robust performance in a modular design

1 Professional Inline Finishing Capabilities: Choose from a variety of finishing options to design a complete end-to-end document production solution that matches your applications. In-line finishing maximizes system speed and reduces labor costs, allowing your staff to be more productive and your business more profitable. The SR5000 Finisher (shown) brings production-level finishing to high-volume environments with 100-sheet multi-position stapling, optional hole punching, plus a 3,000-sheet Shift Tray for long periods of unattended operation. For more advanced finishing needs, the RICOH Pro C901/C901s offers these professional binding options:

- **RB5000 Ring Binder:** Automatically punches, collates and applies your choice of two ring sizes to 50-100 sheet documents.
- **SR5020 Booklet Finisher:** Offers multi-position stapling of up to 100 sheets, stacking of up to 2,500 sheets, saddle-stitch finishing and folding — plus an optional Trimmer Unit for a flush finished edge.
- **GBC StreamPunch Pro:** Provides a variety of interchangeable die sets to punch pages individually, then bind off-line.
- **GB5000 Perfect Binder:** Hot glues books up to 400 pages with cover, and three sided trim.
- **Full Automatic In-line Booklet Maker:** Ricoh's partnership with Plockmatic International AB provides in-line finishing, folding and 3-side trimming of booklets up to 30 sheets.

2 High-Capacity Stacker: Enable longer unattended jobs with a 5,000-sheet stacking capacity. Add a second optional High Capacity Stacker unit in a tandem configuration to provide an enormous 10,000-sheet stacking capacity. Each stacker includes one roll-away cart to easily move large volumes of output up to 350 g/m² for off-line binding or packing and shipping. For added security, the stacker door can be locked when printing valuable documents such as financial instruments, voting ballots, diplomas, and coupons.

3 Simplified Toner Replenishment: Easily replace high-yield toner bottles in one step. Featuring a sub-hopper design, users can replace supplies while the system is running for non-stop productivity.

4 Main Unit: Maximize productivity at 90-ppm/cpm. Solidly built for lasting value, this heavy-duty engine provides 1200 dpi image quality and supports media up to 350 g/m². Ricoh's integrated @Remote diagnostic solution automates meter reading and enables proactive service and support for maximum uptime.



Ricoh Pro C901/C901s
Graphic Arts +

- 5 Elevated Operator Call Light:** Visually alert operators to changes in system status for prompt attention.
- 6 User-Friendly Job Programming:** The intuitive control panel features a full-color 10.4" touch-screen LCD and clearly organized function keys for simplified operation. Easily manage system functions and job queues, and with the Pro C901s, control copy/scan settings and preview document storage/print-on-demand tasks right at the device.
- 7 High-Speed Full-Color Scanning with 100-Sheet ADF:** Quickly capture hardcopy originals for copying, editing, storage, or electronic document distribution. The Automatic Document Feeder scans stacks of images as fast as 75 originals-per-minute in full-color, grayscale, or black & white to put users in total control of file size and image quality for every application. (Standard on the RICOH Pro C901s only.)

- 8 4,000-Sheet Large Capacity Tray with Air-Assist Feeding:** Dual 2,000-Sheet drawers accept media up to 13" x 19" for the production of full-bleed pages with space for crop marks and color bars. Built in Air-Assist technology provides reliable feeding of very thin as well as coated stocks up to 350 g/m² in weight. (Standard on the RICOH Pro C901s, optional on the RICOH Pro C901).
- 9 500-Sheet Multi-Bypass Tray:** Conveniently feed stocks for inserts, colored pages, special media, or short-run jobs without changing an in-line paper source. The Multi-Bypass Tray rests on an optional 13" x 19" Large Capacity Tray.
- 10 Secondary Large Capacity Tray (Optional):** High-volume environments can add a second 4,000-Sheet Large Capacity Tray to raise media capacity to a maximum of 11,000 sheets for a virtually limitless supply. This option is required for configuration with the 500-Sheet Multi-Bypass Tray. Customers with 8.5" x 11" print-only workflows and mixed-media requirements can substitute the Letter Large Capacity Tray with three trays totaling 4,550 sheets.





Proven workflow solutions for every application

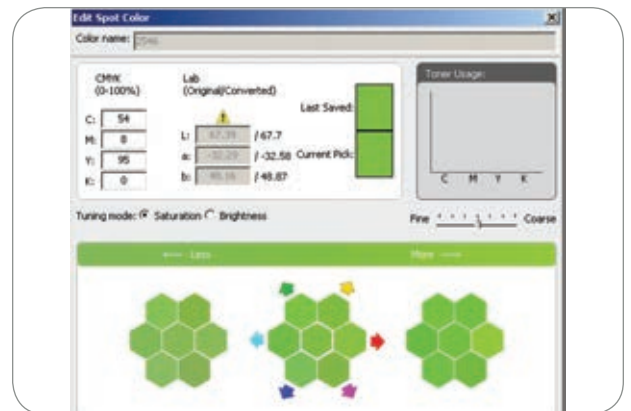
The brain behind the brawn

Ricoh's premier Next Generation Architecture Controller is the brain behind the Pro C901/C901s. This powerful integrated controller is dedicated to maintaining optimal image quality and peripheral performance, managing media supplies, and enabling communication with administrators to securely configure network and device settings. In the RICOH Pro C901s, the Next Generation Architecture Controller also manages the system's robust scanning, copying, and document storage and distribution feature sets.



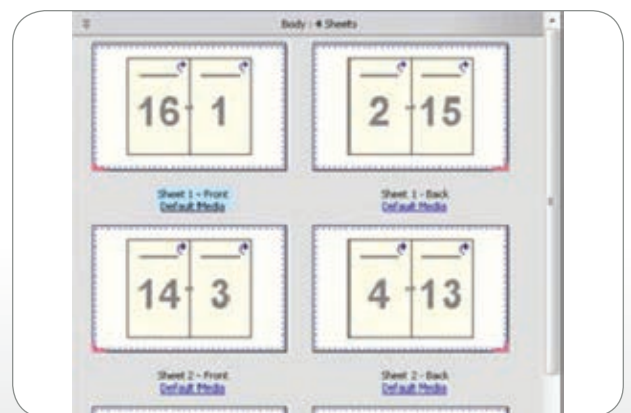
Total control over processing and printing

Choose from two powerful EFI Print Controllers to suit your workflow, featuring the latest Fiery System FS-100Pro software. Streamline workflows with the latest job management tools such as EFI Command Workstation 5.4, HotFolders, Virtual Printers, plus Fiery JDF support for job ticketing standards, and more. Achieve precise color matching with other output devices or proofing applications with ColorWise Pro Tools and the Fiery Graphic Arts Package. Manage complex assembly jobs with utilities such as Fiery Impose and Compose to simplify the production of paginated documents, define gang-up styles and delivery options, and more. Access a complete suite of embedded Fiery scanning and document distribution capabilities for paperless workflows.



Optimize performance for color-critical applications

Production environments with more sophisticated applications can step up to the EFI Fiery E-82 Print Controller to manage every job with graphic arts quality and exceptional speed. Leverage the Quad-Core architecture to speed the processing of large jobs or simultaneously RIP one file while processing another. Achieve precise color management with the standard Graphic Arts Package Premium Edition and other professional-grade tools for color calibration, matching, and proofing. Specify up to 250 Spot Colors per page, identify ICC profiles, and choose from a number of improved color simulation methods for exact color reproduction. Generate error-free PDFs from any file with Adobe® PDF Print Engine (APPE 2.5). Eliminate missing graphic elements caused when files include tables, multiple layers, or text builds.





EFI Fiery E-42 Print Controller Specifications (Optional)

| | |
|--|--|
| Configuration | External Print Controller |
| System Version | Fiery System FS-100Pro |
| CPU | Intel i5-2400 3.1GHz |
| Print Speed | 90-ppm B&W & F/C |
| Print Resolution | 1200 x 1200 dpi |
| Memory | 2GB x 2 DDR2 |
| Hard Disk Drive | 1 TB |
| DVD RW | Drive Supported |
| Operating System | Windows 7 Professional for Embedded Systems x32/x64 |
| Network Protocols | TCP/IP (IPv4, IPv6), SMB |
| Standard Interface | 1000/100/10Base-Tx2 Ethernet |
| Printer Languages/Drivers | PostScript 3, PCL 5c, PCL 6 |
| Fonts | PCL: 80 fonts, PostScript 3: 136 + 2 MM fonts |
| Print Submission & Management Utilities | EFI Driver, EFI Command WorkStation 5.4, EFI Fiery WebTools, EFI HotFolders/MS Office Filter for HotFolders, EFI Virtual Printers, Macintosh Print Center Plugins, Rush Printing, Print/Process Next, Advanced Job Re-Order, Suspend on Mismatch, Quick Doc Merge, Schedule Print, Fiery Printer Delete Utility for Windows, Fiery JDF |
| Color Management & Proofing Utilities | Fiery Graphic Arts Package, Fiery Color Wise 4.0 |
| Imposition & Document Assembly Utilities | Mixed Media, Paper Catalog, Tab Shift, Insert Tab, Booklet Maker 4.0, Impose |
| VDP Support | EFI Fiery FreeForm, Fiery VD Resource Manager |

| | |
|--------------------|--|
| Scanning | Fiery Scan (Scan-to-Email/FTP/SMB/ Hold Queue/I-fax/Mailbox), Fiery Remote Scan |
| Optional Utilities | Compose, Fiery Graphic Arts Package Premium Edition, HDD Kit, FACI/ Furniture Kit, Color Profile Suite |
| Software Utilities | Web Image Monitor, @Remote |

EFI Fiery E-82 Print Controller Specifications (Optional)

| | |
|---|---|
| Configuration | External Print Controller |
| System Version | Fiery System FS-100Pro |
| CPU | Intel Xeon (Quad-Core) Xeon E5-2643 3.3GHz x 2 |
| Print Speed | 90-ppm B&W & F/C |
| Print Resolution | 1200 x 1200 dpi |
| Memory | 2 GB x 4 |
| Hard Disk Drive | 1TB x 2 SATA / RAID 0 (For data) 500GB x 1 SATA (For OS) |
| DVD RW Drive | Supported |
| Operating System | Windows 7 Professional for Embedded Systems x32/x64 |
| Network Protocols | TCP/IP (IPv4, IPv6), AppleTalk, SMB |
| Standard Interface | 1000/100/10Base-Tx2 Ethernet |
| Printer Languages/Drivers | Adobe PostScript 3 |
| Fonts | 136 + 2 MM fonts |
| Print Submission & Management Utilities | EFI Driver, EFI Command WorkStation 5.4, EFI Fiery WebTools, EFI HotFolders/MS Office Filter for HotFolders, EFI Virtual Printers, Macintosh Print Center Plug-ins, Rush Printing, Print/Process Next, Advanced Job Re-Order, Suspend on Mismatch, Quick Doc Merge, Schedule Print, Fiery JDF |

| | |
|--|---|
| Imposition & Document Assembly Utilities | Mixed Media, Paper Catalog, Tab Shift, Insert Tab, Booklet Maker 4.0, Impose, Compose |
| VDP Support | EFI Fiery FreeForm, Fiery VD Resource Manager |
| Color Management & Proofing Utilities | Fiery Graphic Arts Package Premium Edition, Fiery Color Wise 4.0 |
| Scanning | Fiery Scan (Scan-to-Email/FTP/SMB/ Hold Queue/I-fax/Mailbox), Fiery Remote Scan |
| Optional Utilities | FACI/Furniture Kit, HDD Kit, Color Profiler Suite |

Next Generation Architecture Controller Specifications (Standard)

| | |
|---------------------|--|
| Controller Type | Next Generation Architecture Controller |
| CPU | Intel Pentium M 1.4 GHz |
| Memory | Pro C901: 1.5 GB RAM Standard Pro C901s: 2.5 GB RAM Standard |
| Hard Disk Drive | 640 GB Hard Disk Drive standard |
| Standard Interfaces | 0/100Base-TX Ethernet x 2, USB 2.0, SD Card Slot x 2, Counter Interface Slot |
| Protocol Support | Network: TCP/IP; Scan-to-Email: SMTP, POPS; Scan-To-Folder: SMB, FTP, NCP |
| Software Utilities | Web Image Monitor, @Remote |

Ricoh Pro C901/C901s
Graphic Arts +

Ricoh Pro C901/C901s Graphic Arts +

SYSTEM SPECIFICATIONS

General Specifications

| | |
|---|---|
| Pro C901 Configuration | Print Engine with Next Generation Architecture Controller, 2 x 1000-Sheet Tandem Tray, 1 x 500-Sheet Tray, and 10.4" LCD Touch Screen Operation Panel |
| Pro C901s Configuration | Print Engine with Next Generation Architecture Controller, 100-Sheet Automatic Document Feeder, 2 x 1000-Sheet Tandem Tray, 1 x 500-Sheet Tray, 2 x 2000-Sheet Large Capacity Tray, and 10.4" LCD Touch Screen Operation Panel |
| Imaging Technology | Dry electrostatic transfer system with internal transfer belt; 4-drum method |
| Print Resolution | 1200 x 1200 dpi |
| Output Speed (LTR) | 90-ppm Full-color & Monochrome* |
| *Productivity may be affected with paper weights between 300 – 350 g/m ² . | |
| Warm-up Time | 420 seconds or less |
| Max. Media Capacity | 11,000 sheets (fully configured) |
| Max. Output Capacity | 13,500 sheets (fully configured) |
| Max. Printable Area | 12.6" x 18.9" |
| Automatic Duplexing | Standard |
| Standard Media Sizes | Tray 1: Fixed for 8.5" x 11"; 11" x 17" with optional Tandem Tray Tray 2: 5.5" x 7.1" to 12" x 18" Trays 3 & 4: 5.5" x 7.1" to 13" x 19" (Standard for Pro C901s only) Trays 1 & 2: 16 – 58 lb. Bond / 120 lb. Index (220 g/m ²) Trays 3 & 4: 16 – 79 lb. Bond / 130 lb. Cover (350 g/m ²) (Standard for Pro C901s only) Duplexing: 16 – 79 lb. Bond / 130 lb. Cover (350 g/m ²) |
| Dimensions (WxDxH) | Pro C901 Main Unit: 50.4" x 39" x 64.5" (1280 x 990 x 1640 mm) Pro C901s Main Unit: 100.3" x 39" x 64.5" (2555 x 990 x 1640 mm) |
| Weight | Pro C901 Main Unit: 1389 lb. / 630 Kg Pro C901s Main Unit: 1896 lb. / 860 Kg 208 – 240V, 24A, 50/60Hz Operating: 5,500W; Standby: 3,200W |
| Power Requirements | |
| Power Consumption | |

Input & Finishing Accessories

| | |
|--|---|
| Automatic Document Feeder (ADF) (Standard on C901s only) | |
| Original Capacity | 100 sheets or stack less than 12mm |
| Original Size | 5.5" x 8.5" to 11" x 17" |
| Original Feeding Speed | 75-ppm B&W & F/C (@ 200 dpi) |
| Original Weight | Simplex: 11 – 34 lb. Bond (40 – 128 g/m ²) Duplex: 14 – 28 lb. Bond (52 – 105 g/m ²) |
| Original Feeding | Face up, top page scanned first |
| Scanning Modes | ADF, SADf, Batch, Mixed Size |
| RT5030 Letter Size Large Capacity Tray (Option for Pro C901 only) | |
| Total Capacity | 3 Trays / 4,550 sheets |
| Tray Capacity | 3rd Tray: 1,000 sheets / Up to 120 lb. Index (216 g/m ²) 4th Tray: 1,000 sheets / Up to 120 lb. Index (216 g/m ²) 5th Tray: 2,550 sheets / Up to 90 lb. Index (163 g/m ²) |
| Media Size | All Trays: 5.5" x 8.5" to 8.5" x 11" Custom: 5.5" x 8.25" to 9" x 12" |
| RT5050 13" x 19" Large Capacity Tray | |
| Total Capacity | 2 Trays / 4,000 sheets |
| Tray Capacity | 3rd Tray: 2,000 sheets / Up to 130 lb Cover (350 g/m ²) 4th Tray: 2,000 sheets / Up to 130 lb Cover (350 g/m ²) All Trays: 5.5" x 8.5" to 13" x 19" |
| Media Size | All Trays: 5.5" x 8.5" to 13" x 19" |
| BY5000 Multi Bypass Tray* | |
| Media Capacity | 500 sheets |
| Media Size | 5.5" x 8.5" to 13" x 19" |
| Media Weight | 16 lb. Bond – 80 lb. Cover (60 – 216 g/m ²) |
| *Requires configuration with RT5050 13" x 19" Large Capacity Tray. | |

SR5000 3,000 Sheet Finisher w/100-sheet Stapling

| | |
|----------------------------|--|
| Proof Tray: | |
| Stack Capacity | Up to 500 sheets (8.5" x 11") |
| Media Size | 5.5" x 8.5" – 12" x 18" |
| Media Weight | 16 lb. Bond – 80 lb. Cover (60 – 216 g/m ²) |
| Shift Tray: | |
| Stack Capacity | Up to 3,000 sheets (8.5" x 11") |
| Media Size | 5.5" x 8.5" – 13" x 19" |
| Media Weight | 16 lb. Bond – 130 lb. Cover (60 – 350 g/m ²) |
| Staple Capacity | 2 – 100 sheets/set (Letter) 2 – 50 sheets/set (11" x 17", 8.5" x 14") |
| Staple Position | Top, Bottom, 2 Staples, Top Slant |
| Staple Paper Weight | 17 – 24 lb. Bond (64 – 90 g/m ²) |
| Hole Punching | Optional 2/3 Hole Punch Unit |

SR5020 Booklet Finisher

| | |
|----------------------------|---|
| Proof Tray: | |
| Stack Capacity | Up to 250 sheets (8.5" x 11") |
| Media Size | Up to 12" x 18" |
| Media Weight | 16 lb. Bond – 80 lb. Cover (60 – 216 g/m ²) |
| Shift Tray: | |
| Stack Capacity | Up to 2,500 sheets (8.5" x 11") |
| Media Size | Up to 13" x 19" |
| Media Weight | 16 lb. Bond – 130 lb. Cover (60 – 350 g/m ²) |
| Staple Capacity | 2 – 100 sheets/set (Letter) 2 – 50 sheets/set (11" x 17", 8.5" x 14") |
| Staple Position | Top, Bottom, 2 Staples, Top Slant |
| Saddle-Stitch Tray: | |
| Staple Capacity | 15 sheets (60 pages): 20 – 24 lb. Bond (80 – 90 g/m ²); 20 sheets (80 pages): 18 – 20 lb. Bond (64 – 80 g/m ²) 2 staples at center spine 8.5" x 11" – 13" x 19" |
| Staple Position | Up to 30 sets |
| Media Size | Optional 2/3 Hole Punch Unit |
| Media Weight | Optional Booklet Trimmer Unit: Trims open end of 2 – 20-sheet booklets after folding |
| Stack Capacity | |
| Staple Position | |
| Media Size | |
| Stack Capacity | |
| Hole Punching | |
| Booklet Trimming | |

CI5010 Cover Interposer

| | |
|-----------------------------|---|
| Cover Sheet Capacity | 200 sheets x 2 trays |
| Cover Size | 5.5" x 8.5" – 13" x 19" |
| Cover Weight | 17 lb. Bond – 80 lb. Cover (64 – 216 g/m ²) |

ZF4000 Z-Folding Unit

| | |
|---------------------|--|
| Media Size | 8.5" x 11" – 12" x 18" |
| Media Weight | 17 – 20 lb. Bond (64 – 80 g/m ²) |

SK5010 High Capacity Stacker*

| | |
|-----------------------|---|
| Stack Capacity | Proof Tray: 250 sheets Shift Tray: 5,000 sheets (output jogger standard) |
| Media Size | Up to 13" x 19" |
| Media Weight | 14 lb. Bond – 130 lb. Cover (52 – 350 g/m ²) |

*One or two Stackers may be installed. Includes one Roll Away Cart.

RB5000 Ring Binder

| | |
|------------------------------|--|
| Media Size | 8.5" x 11" |
| Media Weight | 17 lb. Bond – 80 lb Cover (64 – 216 g/m ²) |
| Capacity of Ring Bind | 2 – 100 sheets |
| Number of Holes | 21 holes (8.5" x 11") |
| Ring Bind Supply | 50 sheets & 100 sheets |
| Tab Stock | Supported |
| Stack Capacity | 11 sets; 100 sheets/set (Binding mode); 100 sheets (Punching mode) |

GB5000 Perfect Binder*

| | |
|---------------------------|---|
| Finished Book Size | Width: 7.9" – 11.69"; Length: 5.5" – 8.5" |
| Binding Agent | Hot Glue |
| Cutting Directions | 3-edges, 1-edge, None |
| Book Thickness | Up to 200 sheets; Less than .91" |
| Media Weight | Body Pages: 17 – 28 lb. Bond Cover Pages: Up to 110 lb Cover (300 g/m ²) 7 sets (up to 100 pages per set) |
| Stack Capacity | |

*Requires configuration with Transit Pass Unit GB5000 and Cover Interposer Tray Type GB5000.

GBC StreamPunch Pro Punch Unit

| | |
|----------------------|---|
| Die Types | 3-hole Ring Bind, 11-hole Velo Bind, 19-hole Comb Bind, 21-hole Wire Bind 2:1, 32-hole WireBind 3:1, 32-hole ProClick, 44-hole Color Coil |
| Media Size | 8.5" x 11" (no tabs) |
| Punch Edge | 11" edge of 8.5" x 11", one sheet at a time |
| Media Weights | 20 lb. Bond – 80 lb. Cover (75 – 216 g/m ²) |

BK5010e Production Level Booklet Maker

| | |
|------------------------------|---|
| Max. Booklet Capacity | 30 sheets (120 pages) |
| Finishing Speed | Maintains rated engine speed |
| Media Size | Width: 8.1" – 12.6"; Length: 10.8" – 18" |
| Media Weights | 16 lb. Bond – 110 lb Cover (60 – 300 g/m ²) |

Optional BK5010e Production Booklet Maker Accessories

| | |
|------------------------------------|---|
| CF5010 Cover Feeder | Inserts preprinted/color sheets as covers |
| BF5010e Book Folder | Creates a square fold on saddle stitched booklets |
| TR5010e Trimmer Unit | Trims edge of the booklet for a professional finish |
| BK5010 Rail Unit | Eases finisher docking/undocking |
| CT5010e Crease Trimmer Unit | Trims the excess waste from the front and rear for full bleed edge to edge booklets and creases the spine to reduce cracking of color |

Document Server Specifications

(Available for Pro C901s only)

| | |
|---------------------------------|--|
| HDD Capacity for Storage | 410 GB |
| Max. Stored Documents | 3,000 documents |
| Max. Page per Document | 2,000 pages (Copy & Scan) 5,000 pages (Print) |
| Max. Document Capacity | 12,000 total pages |

Page capacities may vary by image coverage of each document.

Scanner Specifications (Using Next Generation Architecture Controller) (Available for Pro C901s only)

| | |
|---------------------------|--|
| Scan Resolution | TIWAIN Scanning: 100 – 1,200 dpi (B&W and Color) Scan-to-Modes: 100 / 150 / 200 / 300 / 400 / 600 dpi |
| File Format | JPEG, TIFF (Multi/Single), PDF (Multi/Single), High Compression PDF (Multi/Single) |
| Scan Modes | B&W Text/Line Art (Default), B&W Text, B&W Text/Photo, B&W Photo, Grayscale, F/C Photo, F/C Text/Photo, Auto Color Selection |
| Max. Scan Area | 11.7" x 17" |
| Scan Speed | 75 scans per minute (B&W & F/C, LTR @ 200 dpi) |
| Scan Image Density | Auto and Manual (7 levels) |
| Scan Modes | Scan-to-Email (with LDAP support), Scan-to-Folder (SMB/FTP/NCP), Scan-to-URL, Network TIWAIN Scanning |
| Scanning Features | 2,000-entry Address Book, Preview Before TX, Drop Out Color Send, Thin Paper Mode, SADf Mode, Batch Mode, Mixed Size Originals |

Copier Specifications

(Available for Pro C901s only)

| | |
|----------------------------|--|
| Scanner Type | Full-color CCD Array |
| Original Types | Sheets, Books, and 3D objects |
| Document Feeder | 100-Sheet ADF standard |
| Max. Original Size | Up to 11" x 17" |
| Multiple Copies | 1 – 9,999 |
| First Copy Out Time | 13.5 seconds or less |
| Copy Resolution | 1200 x 1200 dpi |
| Multi-copy Speed | 90-ppm (B&W & F/C) (Memory retention) 80-ppm (B&W, LTR) (ADF 1 to 1) 60-ppm (F/C, LTR) (ADF 1 to 1) |
| Magnification | 25% – 400% in 1% increments |
| Copier Features | 7 preset Reduction & Enlargement ratios Image Density (Automatic and Manual – 9 levels), Auto Magnification, Directional Magnification, Full Image Copy, Interrupt Copy, Original Type Setting, Duplex (1:1, 2:2, Book to 2-Sided, Front and Back to 2-Sided), Book/Series Combine, Margin Adjustment, Erase 3-Edge, Cover/Slip-Sheet, Chaptering, Media Designate, Image Rotation, Stamp, Image Adjustment, Color Adjustment, 500 User Codes, Copy Counter, Counterfeit Prevention |

Security Specifications

(Using Next Generation Architecture Controller)

| | |
|------------------------------------|--|
| HDD Data/Overwrite Security | Standard |
| User Authentication | Windows, LDAP, Basic, User Code |
| Encryption | Address Book, Password, SSL Communication, S/MIME, IPsec |
| Network Management | Network Protocol, IP Filtering |

Additional Accessories

| | |
|-------------------------------|---------------------------------------|
| Bridge Unit | For tandem RT5050 connection |
| Buffer Pass Unit | Cools paper to prevent toner adhesion |
| Tandem Tray Converter | Feed 11" x 17" via Tray 1 |
| Tab Sheet Unit | Feed Tab stocks via Tray 2 |
| Counter Interface Unit | |

Consumables

| | |
|---------------------------|-----------------------------|
| C/M/Y/K Toners | Yield: 67,000 pages/bottle* |
| Waste Toner Bottle | Yield: 220,000 pages* |

*Declared yield values based on 8.75% image coverage factor.

Optional Uptime Components

| | |
|-----------------|---|
| TCRU Kit | Trained Customer Replaceable Parts: Maintenance components replaced by customer |
| @Remote | Remote diagnostics Remote troubleshooting |

For maximum performance and yield, we recommend using genuine Ricoh parts and supplies.

RICOH
imagine. change.

www.ricoh-usa.com

Ricoh Americas Corporation, 70 Valley Stream Parkway, Malvern, PA 19355, 1-800-63-RICOH
Ricoh® and the Ricoh Logo are registered trademarks of Ricoh Company, Ltd. All other trademarks are the property of their respective owners. ©2013 Ricoh Americas Corporation. All rights reserved. The content of this document, and the appearance, features and specifications of Ricoh products and services are subject to change from time to time without notice. Products are shown with optional features. While care has been taken to ensure the accuracy of this information, Ricoh makes no representation or warranties about the accuracy, completeness or adequacy of the information contained herein, and shall not be liable for any errors or omissions in these materials. Actual results will vary depending upon use of the products and services, and the conditions and factors affecting performance. The only warranties for Ricoh products and services are as set forth in the express warranty statements accompanying them.

