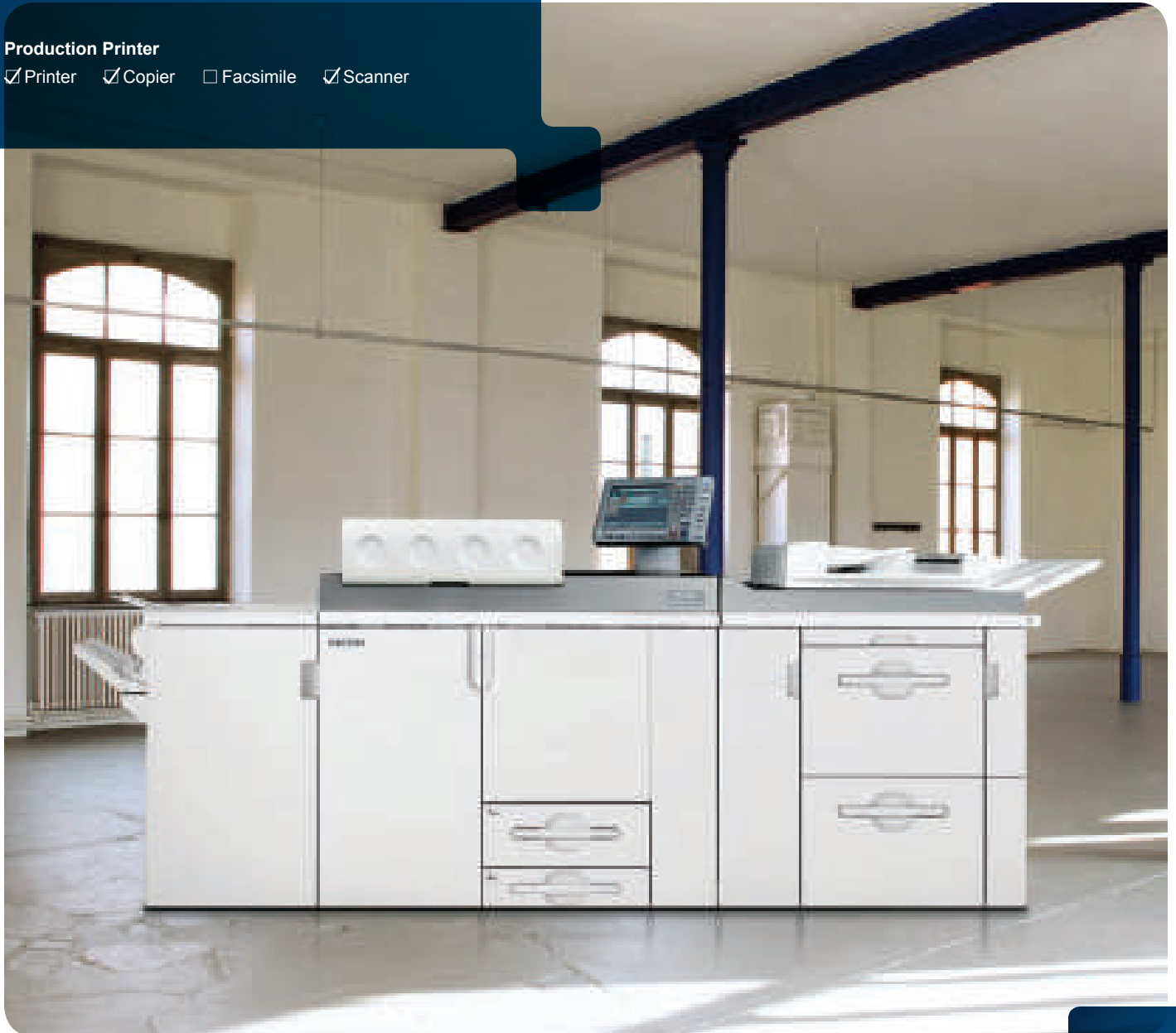


Ricoh Pro C901/C901s Graphic Arts +

Production Printer

Printer Copier Facsimile Scanner



90
ppm
monochrome
and full-color

The power to meet any high-volume challenge

Trust the RICOH® Pro C901/C901s Graphic Arts + to deliver exceptional quality and performance no matter how large or complex your applications. Robust engine construction provides the reliability and durability your production-class environment needs. Wide media versatility and professional in-line finishing options expand the range of jobs that you can accept. Powerful EFI Fiery print controllers offer advanced color and job management tools to execute sophisticated document assembly and VDP workflows with ease. The RICOH Pro C901s adds integrated full-color scanning, copying, and document storage to meet image capture and print-on-demand requirements. Both systems also employ Ricoh's next-generation oil-free imaging technologies to produce output with near-offset quality while minimizing costs.

The RICOH Pro C901/C901s Graphic Arts + — it's up to any challenge.



Maximum productivity for high-volume environments

Quality, flexibility and productivity

Print at 90 ppm regardless of media type, weight or when duplexing — and always at 1200 x 1200 dpi (productivity may be affected with paper weights between 300–350 g/m²). Ricoh's PxP™ chemical toners and oil-free fusing technology deliver near-offset results with smaller, more uniform toner particles for sharper images and better fills with a matte finish. Quickly replace high-capacity toner bottles and reload paper trays while running for uninterrupted performance. Achieve consistent image quality with advanced image stabilization, single direction development, mechanical paper registration, enhanced fusing technologies, automatic calibration adjustments, and more.



Wide variety of media handling features

Execute full-bleed printing with support for media up to 13" x 19". Expand capacity with up to 7 media pick points and a maximum of 11,000 sheets. Create durable directmail, cards, menus, and booklet covers with support for heavy and textured media — even duplex onto stocks up to 350 g/m². The new Paper Library feature lets you apply settings by selecting a preset or custom media type to optimize quality and minimize mistakes (integrates with Fiery Paper Catalog on a connected EFI controller). Ensure precise paper feeding with Air-Assist Feeding technology while built-in De-Curling, Paper Registration, and Skew Control provide accurate registration. Configure your system with professional in-line finishing options to fully automate binding, punching, and stacking for up to 13,000 pages.



Production-class construction and performance

Handle the toughest workloads and diverse workflows with maximum reliability and dependability. The welded steel frame provides exceptional strength to handle up to 350,000 impressions per month. Reduce costs and maintenance requirements with long-lasting supplies and consumables. Each toner bottle is replaced individually in seconds and yields up to 67,000 pages at a realistic 8.75% coverage factor. Operate at peak efficiency with Trained Customer Replaceable Units (TCRUs) that maximize system uptime by enabling trained customers to replace key imaging components without waiting for service. Process volumes of hardcopy originals with a full suite of image-capture, digital copying, print-on-demand, and electronic document distribution functions. Command attention with an elevated Operator Call Light that's visible from any point of view.



Robust performance in a modular design

- 1 Professional Inline Finishing Capabilities:** Choose from a variety of finishing options to design a complete end-to-end document production solution that matches your applications. In-line finishing maximizes system speed and reduces labor costs, allowing your staff to be more productive and your business more profitable. The SR5000 Finisher (shown) brings production-level finishing to high-volume environments with 100-sheet multi-position stapling, optional hole punching, plus a 3,000-sheet Shift Tray for long periods of unattended operation. For more advanced finishing needs, the RICOH Pro C901/C901s offers these professional binding options:
 - **RB5000 Ring Binder:** Automatically punches, collates and applies your choice of two ring sizes to 50-100 sheet documents.
 - **SR5020 Booklet Finisher:** Offers multi-position stapling of up to 100 sheets, stacking of up to 2,500 sheets, saddle-stitch finishing and folding — plus an optional Trimmer Unit for a flush finished edge.
 - **GBC StreamPunch Pro:** Provides a variety of interchangeable die sets to punch pages individually, then bind off-line.
 - **GB5000 Perfect Binder:** Hot glues books up to 400 pages with cover, and three sided trim.
 - **Full Automatic In-line Booklet Maker:** Ricoh's partnership with Plockmatic International AB provides in-line finishing, folding and 3-side trimming of booklets up to 30 sheets.
- 2 High-Capacity Stacker:** Enable longer unattended jobs with a 5,000-sheet stacking capacity. Add a second optional High Capacity Stacker unit in a tandem configuration to provide an enormous 10,000-sheet stacking capacity. Each stacker includes one roll-away cart to easily move large volumes of output up to 350 g/m² for off-line binding or packing and shipping. For added security, the stacker door can be locked when printing valuable documents such as financial instruments, voting ballots, diplomas, and coupons.
- 3 Simplified Toner Replenishment:** Easily replace high-yield toner bottles in one step. Featuring a sub-hopper design, users can replace supplies while the system is running for non-stop productivity.
- 4 Main Unit:** Maximize productivity at 90-ppm/cpm. Solidly built for lasting value, this heavy-duty engine provides 1200 dpi image quality and supports media up to 350 g/m². Ricoh's integrated @Remote diagnostic solution automates meter reading and enables proactive service and support for maximum uptime.



Ricoh Pro C901/C901s
Graphic Arts +

- 5 **Elevated Operator Call Light:** Visually alert operators to changes in system status for prompt attention.
- 6 **User-Friendly Job Programming:** The intuitive control panel features a full-color 10.4" touch-screen LCD and clearly organized function keys for simplified operation. Easily manage system functions and job queues, and with the Pro C901s, control copy/scan settings and preview document storage/print-on-demand tasks right at the device.
- 7 **High-Speed Full-Color Scanning with 100-Sheet ADF:** Quickly capture hardcopy originals for copying, editing, storage, or electronic document distribution. The Automatic Document Feeder scans stacks of images as fast as 75 originals-per-minute in full-color, grayscale, or black & white to put users in total control of file size and image quality for every application. (Standard on the RICOH Pro C901s only.)

- 8 **4,000-Sheet Large Capacity Tray with Air-Assist Feeding:** Dual 2,000-Sheet drawers accept media up to 13" x 19" for the production of full-bleed pages with space for crop marks and color bars. Built in Air-Assist technology provides reliable feeding of very thin as well as coated stocks up to 350 g/m² in weight. (Standard on the RICOH Pro C901s, optional on the RICOH Pro C901).
- 9 **500-Sheet Multi-Bypass Tray:** Conveniently feed stocks for inserts, colored pages, special media, or short-run jobs without changing an in-line paper source. The Multi-Bypass Tray rests on an optional 13" x 19" Large Capacity Tray.
- 10 **Secondary Large Capacity Tray (Optional):** High-volume environments can add a second 4,000-Sheet Large Capacity Tray to raise media capacity to a maximum of 11,000 sheets for a virtually limitless supply. This option is required for configuration with the 500-Sheet Multi-Bypass Tray. Customers with 8.5" x 11" print-only workflows and mixed-media requirements can substitute the Letter Large Capacity Tray with three trays totaling 4,550 sheets.





Proven workflow solutions for every application

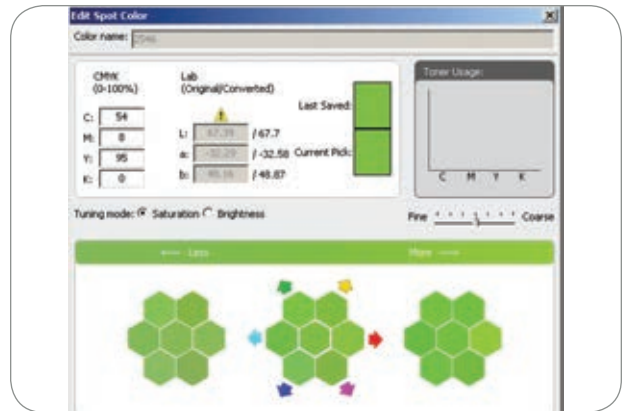
The brain behind the brawn

Ricoh's premier Next Generation Architecture Controller is the brain behind the Pro C901/C901s. This powerful integrated controller is dedicated to maintaining optimal image quality and peripheral performance, managing media supplies, and enabling communication with administrators to securely configure network and device settings. In the RICOH Pro C901s, the Next Generation Architecture Controller also manages the system's robust scanning, copying, and document storage and distribution feature sets.



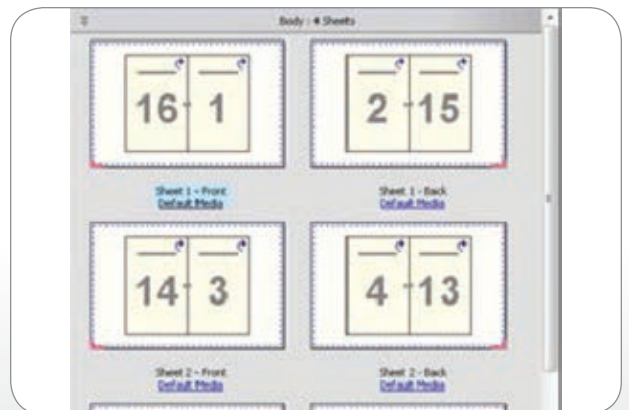
Total control over processing and printing

Choose from two powerful EFI Print Controllers to suit your workflow, featuring the latest Fiery System FS-100Pro software. Streamline workflows with the latest job management tools such as EFI Command Workstation 5.4, HotFolders, Virtual Printers, plus Fiery JDF support for job ticketing standards, and more. Achieve precise color matching with other output devices or proofing applications with ColorWise Pro Tools and the Fiery Graphic Arts Package. Manage complex assembly jobs with utilities such as Fiery Impose and Compose to simplify the production of paginated documents, define gang-up styles and delivery options, and more. Access a complete suite of embedded Fiery scanning and document distribution capabilities for paperless workflows.



Optimize performance for color-critical applications

Production environments with more sophisticated applications can step up to the EFI Fiery E-82 Print Controller to manage every job with graphic arts quality and exceptional speed. Leverage the Quad-Core architecture to speed the processing of large jobs or simultaneously RIP one file while processing another. Achieve precise color management with the standard Graphic Arts Package Premium Edition and other professional-grade tools for color calibration, matching, and proofing. Specify up to 250 Spot Colors per page, identify ICC profiles, and choose from a number of improved color simulation methods for exact color reproduction. Generate error-free PDFs from any file with Adobe® PDF Print Engine (APPE 2.5). Eliminate missing graphic elements caused when files include tables, multiple layers, or text builds.





EFI Fiery E-42 Print Controller Specifications (Optional)

Configuration	External Print Controller
System Version	Fiery System FS-100Pro
CPU	Intel i5-2400 3.1GHz
Print Speed	90-ppm B&W & F/C
Print Resolution	1200 x 1200 dpi
Memory	2GB x 2 DDR2
Hard Disk Drive	1 TB
DVD RW	Drive Supported
Operating System	Windows 7 Professional for Embedded Systems x32/x64
Network Protocols	TCP/IP (IPv4, IPv6), SMB
Standard Interface	1000/100/10Base-Tx2 Ethernet
Printer Languages/Drivers	PostScript 3, PCL 5c, PCL 6
Fonts	PCL: 80 fonts, PostScript 3: 136 + 2 MM fonts
Print Submission & Management Utilities	EFI Driver, EFI Command WorkStation 5.4, EFI Fiery WebTools, EFI HotFolders/MS Office Filter for HotFolders, EFI Virtual Printers, Macintosh Print Center Plugins, Rush Printing, Print/Process Next, Advanced Job Re-Order, Suspend on Mismatch, Quick Doc Merge, Schedule Print, Fiery Printer Delete Utility for Windows, Fiery JDF
Color Management & Proofing Utilities	Fiery Graphic Arts Package, Fiery Color Wise 4.0
Imposition & Document Assembly Utilities	Mixed Media, Paper Catalog, Tab Shift, Insert Tab, Booklet Maker 4.0, Impose
VDP Support	EFI Fiery FreeForm, Fiery VD Resource Manager

EFI Fiery E-82 Print Controller Specifications (Optional)

Configuration	External Print Controller
System Version	Fiery System FS-100Pro
CPU	Intel Xeon (Quad-Core) Xeon E5-2643 3.3GHz x 2
Print Speed	90-ppm B&W & F/C
Print Resolution	1200 x 1200 dpi
Memory	2 GB x 4
Hard Disk Drive	1TB x 2 SATA / RAID 0 (For data) 500GB x 1 SATA (For OS)
DVD RW Drive	Supported
Operating System	Windows 7 Professional for Embedded Systems x32/x64
Network Protocols	TCP/IP (IPv4, IPv6), AppleTalk, SMB
Standard Interface	1000/100/10Base-Tx2 Ethernet
Printer Languages/Drivers	Adobe PostScript 3
Fonts	136 + 2 MM fonts
Print Submission & Management Utilities	EFI Driver, EFI Command WorkStation 5.4, EFI Fiery WebTools, EFI HotFolders/MS Office Filter for HotFolders, EFI Virtual Printers, Macintosh Print Center Plug-ins, Rush Printing, Print/Process Next, Advanced Job Re-Order, Suspend on Mismatch, Quick Doc Merge, Schedule Print, Fiery JDF

Scanning	Fiery Scan (Scan-to-Email/FTP/SMB/ Hold Queue/I-fax/Mailbox), Fiery Remote Scan
Optional Utilities	Compose, Fiery Graphic Arts Package Premium Edition, HDD Kit, FACI/ Furniture Kit, Color Profile Suite
Software Utilities	Web Image Monitor, @Remote
Imposition & Document Assembly Utilities	Mixed Media, Paper Catalog, Tab Shift, Insert Tab, Booklet Maker 4.0, Impose, Compose
VDP Support	EFI Fiery FreeForm, Fiery VD Resource Manager
Color Management & Proofing Utilities	Fiery Graphic Arts Package Premium Edition, Fiery Color Wise 4.0
Scanning	Fiery Scan (Scan-to-Email/FTP/SMB/ Hold Queue/I-fax/Mailbox), Fiery Remote Scan
Optional Utilities	FACI/Furniture Kit, HDD Kit, Color Profiler Suite

Next Generation Architecture Controller Specifications (Standard)

Controller Type	Next Generation Architecture Controller
CPU	Intel Pentium M 1.4 GHz
Memory	Pro C901: 1.5 GB RAM Standard Pro C901s: 2.5 GB RAM Standard
Hard Disk Drive	640 GB Hard Disk Drive standard
Standard Interfaces	0/100Base-TX Ethernet x 2, USB 2.0, SD Card Slot x 2, Counter Interface Slot
Protocol Support	Network: TCP/IP; Scan-to-Email: SMTP, POPS; Scan-To-Folder: SMB, FTP, NCP
Software Utilities	Web Image Monitor, @Remote

Ricoh Pro C901/C901s
Graphic Arts +

Ricoh Pro C901/C901s Graphic Arts +

SYSTEM SPECIFICATIONS

General Specifications

Pro C901 Configuration	Print Engine with Next Generation Architecture Controller, 2 x 1000-Sheet Tandem Tray, 1 x 500-Sheet Tray, and 10.4" LCD Touch Screen Operation Panel
Pro C901s Configuration	Print Engine with Next Generation Architecture Controller, 100-Sheet Automatic Document Feeder, 2 x 1000-Sheet Tandem Tray, 1 x 500-Sheet Tray, 2 x 2000-Sheet Large Capacity Tray, and 10.4" LCD Touch Screen Operation Panel
Imaging Technology	Dry electrostatic transfer system with internal transfer belt; 4-drum method
Print Resolution	1200 x 1200 dpi
Output Speed (LTR)	90-ppm Full-color & Monochrome*
*Productivity may be affected with paper weights between 300 – 350 g/m ² .	
Warm-up Time	420 seconds or less
Max. Media Capacity	11,000 sheets (fully configured)
Max. Output Capacity	13,500 sheets (fully configured)
Max. Printable Area	12.6" x 18.9"
Automatic Duplexing	Standard
Standard Media Sizes	Tray 1: Fixed for 8.5" x 11"; 11" x 17" with optional Tandem Tray Tray 2: 5.5" x 7.1" to 12" x 18" Trays 3 & 4: 5.5" x 7.1" to 13" x 19" (Standard for Pro C901s only) Trays 1 & 2: 16 – 58 lb. Bond / 120 lb. Index (220 g/m ²) Trays 3 & 4: 16 – 79 lb. Bond / 130 lb. Cover (350 g/m ²) (Standard for Pro C901s only) Duplexing: 16 – 79 lb. Bond / 130 lb. Cover (350 g/m ²)
Dimensions (WxDxH)	Pro C901 Main Unit: 50.4" x 39" x 64.5" (1280 x 990 x 1640 mm) Pro C901s Main Unit: 100.3" x 39" x 64.5" (2555 x 990 x 1640 mm)
Weight	Pro C901 Main Unit: 1389 lb. / 630 Kg Pro C901s Main Unit: 1896 lb. / 860 Kg 208 – 240V, 24A, 50/60Hz Operating: 5,500W; Standby: 3,200W
Power Requirements	
Power Consumption	

Input & Finishing Accessories

Automatic Document Feeder (ADF) (Standard on C901s only)	
Original Capacity	100 sheets or stack less than 12mm
Original Size	5.5" x 8.5" to 11" x 17"
Original Feeding Speed	75-ppm B&W & F/C (@ 200 dpi)
Original Weight	Simplex: 11 – 34 lb. Bond (40 – 128 g/m ²) Duplex: 14 – 28 lb. Bond (52 – 105 g/m ²)
Original Feeding	Face up, top page scanned first
Scanning Modes	ADF, SADf, Batch, Mixed Size
RT5030 Letter Size Large Capacity Tray (Option for Pro C901 only)	
Total Capacity	3 Trays / 4,550 sheets
Tray Capacity	3rd Tray: 1,000 sheets / Up to 120 lb. Index (216 g/m ²) 4th Tray: 1,000 sheets / Up to 120 lb. Index (216 g/m ²) 5th Tray: 2,550 sheets / Up to 90 lb. Index (163 g/m ²)
Media Size	All Trays: 5.5" x 8.5" to 8.5" x 11" Custom: 5.5" x 8.25" to 9" x 12"
RT5050 13" x 19" Large Capacity Tray	
Total Capacity	2 Trays / 4,000 sheets
Tray Capacity	3rd Tray: 2,000 sheets / Up to 130 lb Cover (350 g/m ²) 4th Tray: 2,000 sheets / Up to 130 lb Cover (350 g/m ²) All Trays: 5.5" x 8.5" to 13" x 19"
Media Size	All Trays: 5.5" x 8.5" to 13" x 19"
BY5000 Multi Bypass Tray*	
Media Capacity	500 sheets
Media Size	5.5" x 8.5" to 13" x 19"
Media Weight	16 lb. Bond – 80 lb. Cover (60 – 216 g/m ²)
*Requires configuration with RT5050 13" x 19" Large Capacity Tray.	

SR5000 3,000 Sheet Finisher w/100-sheet Stapling

Proof Tray:	
Stack Capacity	Up to 500 sheets (8.5" x 11")
Media Size	5.5" x 8.5" – 12" x 18"
Media Weight	16 lb. Bond – 80 lb. Cover (60 – 216 g/m ²)
Shift Tray:	
Stack Capacity	Up to 3,000 sheets (8.5" x 11")
Media Size	5.5" x 8.5" – 13" x 19"
Media Weight	16 lb. Bond – 130 lb. Cover (60 – 350 g/m ²)
Staple Capacity	2 – 100 sheets/set (Letter) 2 – 50 sheets/set (11" x 17", 8.5" x 14")
Staple Position	Top, Bottom, 2 Staples, Top Slant
Staple Paper Weight	17 – 24 lb. Bond (64 – 90 g/m ²)
Hole Punching	Optional 2/3 Hole Punch Unit

SR5020 Booklet Finisher

Proof Tray:	
Stack Capacity	Up to 250 sheets (8.5" x 11")
Media Size	Up to 12" x 18"
Media Weight	16 lb. Bond – 80 lb. Cover (60 – 216 g/m ²)
Shift Tray:	
Stack Capacity	Up to 2,500 sheets (8.5" x 11")
Media Size	Up to 13" x 19"
Media Weight	16 lb. Bond – 165 lb. Index (60 – 300 g/m ²)
Staple Capacity	2 – 100 sheets/set (Letter) 2 – 50 sheets/set (11" x 17", 8.5" x 14")
Staple Position	Top, Bottom, 2 Staples, Top Slant
Staple Paper Weight	17 – 24 lb. Bond (64 – 90 g/m ²)
Saddle-Stitch Tray:	
Staple Capacity	15 sheets (60 pages): 20 – 24 lb. Bond (80 – 90 g/m ²); 20 sheets (80 pages): 18 – 20 lb. Bond (64 – 80 g/m ²) 2 staples at center spine 8.5" x 11" – 13" x 19"
Staple Position	Up to 30 sets
Media Size	Optional 2/3 Hole Punch Unit
Media Weight	Optional Booklet Trimmer Unit: Trims open end of 2 – 20-sheet booklets after folding
Stack Capacity	
Staple Position	
Media Size	
Stack Capacity	
Hole Punching	
Booklet Trimming	

CI5010 Cover Interposer

Cover Sheet Capacity	200 sheets x 2 trays
Cover Size	5.5" x 8.5" – 13" x 19"
Cover Weight	17 lb. Bond – 80 lb. Cover (64 – 216 g/m ²)

ZF4000 Z-Folding Unit

Media Size	8.5" x 11" – 12" x 18"
Media Weight	17 – 20 lb. Bond (64 – 80 g/m ²)

SK5010 High Capacity Stacker*

Stack Capacity	Proof Tray: 250 sheets Shift Tray: 5,000 sheets (output jogger standard)
Media Size	Up to 13" x 19"
Media Weight	14 lb. Bond – 130 lb. Cover (52 – 350 g/m ²)

*One or two Stackers may be installed. Includes one Roll Away Cart.

RB5000 Ring Binder

Media Size	8.5" x 11"
Media Weight	17 lb. Bond – 80 lb Cover (64 – 216 g/m ²)
Capacity of Ring Bind	2 – 100 sheets
Number of Holes	21 holes (8.5" x 11")
Ring Bind Supply	50 sheets & 100 sheets
Tab Stock	Supported
Stack Capacity	11 sets; 100 sheets/set (Binding mode); 100 sheets (Punching mode)

GB5000 Perfect Binder*

Finished Book Size	Width: 7.9" – 11.69"; Length: 5.5" – 8.5"
Binding Agent	Hot Glue
Cutting Directions	3-edges, 1-edge, None
Book Thickness	Up to 200 sheets; Less than .91"
Media Weight	Body Pages: 17 – 28 lb. Bond Cover Pages: Up to 110 lb Cover (300 g/m ²) 7 sets (up to 100 pages per set)
Stack Capacity	

*Requires configuration with Transit Pass Unit GB5000 and Cover Interposer Tray Type GB5000.

GBC StreamPunch Pro Punch Unit

Die Types	3-hole Ring Bind, 11-hole Velo Bind, 19-hole Comb Bind, 21-hole Wire Bind 2:1, 32-hole WireBind 3:1, 32-hole ProClick, 44-hole Color Coil
Media Size	8.5" x 11" (no tabs)
Punch Edge	11" edge of 8.5" x 11", one sheet at a time
Media Weights	20 lb. Bond – 80 lb. Cover (75 – 216 g/m ²)

BK5010e Production Level Booklet Maker

Max. Booklet Capacity	30 sheets (120 pages)
Finishing Speed	Maintains rated engine speed
Media Size	Width: 8.1" – 12.6"; Length: 10.8" – 18"
Media Weights	16 lb. Bond – 110 lb Cover (60 – 300 g/m ²)

Optional BK5010e Production Booklet Maker Accessories

CF5010 Cover Feeder	Inserts preprinted/color sheets as covers
BF5010e Book Folder	Creates a square fold on saddle stitched booklets
TR5010e Trimmer Unit	Trims edge of the booklet for a professional finish
BK5010 Rail Unit	Eases finisher docking/undocking
CT5010e Crease Trimmer Unit	Trims the excess waste from the front and rear for full bleed edge to edge booklets and creases the spine to reduce cracking of color

Document Server Specifications

(Available for Pro C901s only)

HDD Capacity for Storage	410 GB
Max. Stored Documents	3,000 documents
Max. Page per Document	2,000 pages (Copy & Scan) 5,000 pages (Print)
Max. Document Capacity	12,000 total pages

Page capacities may vary by image coverage of each document.

Scanner Specifications (Using Next Generation Architecture Controller) (Available for Pro C901s only)

Scan Resolution	TWAIN Scanning: 100 – 1,200 dpi (B&W and Color) Scan-to-Modes: 100 / 150 / 200 / 300 / 400 / 600 dpi
File Format	JPEG, TIFF (Multi/Single), PDF (Multi/Single), High Compression PDF (Multi/Single)
Scan Modes	B&W Text/Line Art (Default), B&W Text, B&W Text/Photo, B&W Photo, Grayscale, F/C Photo, F/C Text/Photo, Auto Color Selection 11.7" x 17"
Max. Scan Area	11.7" x 17"
Scan Speed	75 scans per minute (B&W & F/C, LTR @ 200 dpi)
Scan Image Density	Auto and Manual (7 levels)
Scan Modes	Scan-to-Email (with LDAP support), Scan-to-Folder (SMB/FTP/NCP), Scan-to-URL, Network TWAIN Scanning
Scanning Features	2,000-entry Address Book, Preview Before TX, Drop Out Color Send, Thin Paper Mode, SADf Mode, Batch Mode, Mixed Size Originals

Copier Specifications

(Available for Pro C901s only)

Scanner Type	Full-color CCD Array
Original Types	Sheets, Books, and 3D objects
Document Feeder	100-Sheet ADF standard
Max. Original Size	Up to 11" x 17"
Multiple Copies	1 – 9,999
First Copy Out Time	13.5 seconds or less
Copy Resolution	1200 x 1200 dpi
Multi-copy Speed	90-ppm (B&W & F/C) (Memory retention) 80-ppm (B&W, LTR) (ADF 1 to 1) 60-ppm (F/C, LTR) (ADF 1 to 1)
Magnification	25% – 400% in 1% increments
Copier Features	7 preset Reduction & Enlargement ratios Image Density (Automatic and Manual – 9 levels), Auto Magnification, Directional Magnification, Full Image Copy, Interrupt Copy, Original Type Setting, Duplex (1:1, 2:2, Book to 2-Sided, Front and Back to 2-Sided), Book/Series Combine, Margin Adjustment, Erase 3-Edge, Cover/Slip-Sheet, Chaptering, Media Designate, Image Rotation, Stamp, Image Adjustment, Color Adjustment, 500 User Codes, Copy Counter, Counterfeit Prevention

Security Specifications

(Using Next Generation Architecture Controller)

HDD Data/Overwrite Security	Standard
User Authentication	Windows, LDAP, Basic, User Code
Encryption	Address Book, Password, SSL Communication, S/MIME, IPsec
Network Management	Network Protocol, IP Filtering

Additional Accessories

Bridge Unit	For tandem RT5050 connection
Buffer Pass Unit	Cools paper to prevent toner adhesion
Tandem Tray Converter	Feed 11" x 17" via Tray 1
Tab Sheet Unit	Feed Tab stocks via Tray 2
Counter Interface Unit	

Consumables

C/M/Y/K Toners	Yield: 67,000 pages/bottle*
Waste Toner Bottle	Yield: 220,000 pages*

*Declared yield values based on 8.75% image coverage factor.

Optional Uptime Components

TCRU Kit	Trained Customer Replaceable Parts: Maintenance components replaced by customer
@Remote	Remote diagnostics Remote troubleshooting

For maximum performance and yield, we recommend using genuine Ricoh parts and supplies.

RICOH
imagine. change.

www.ricoh-usa.com

Ricoh Americas Corporation, 70 Valley Stream Parkway, Malvern, PA 19355, 1-800-63-RICOH
Ricoh and the Ricoh Logo are registered trademarks of Ricoh Company, Ltd. All other trademarks are the property of their respective owners. ©2013 Ricoh Americas Corporation. All rights reserved. The content of this document, and the appearance, features and specifications of Ricoh products and services are subject to change from time to time without notice. Products are shown with optional features. While care has been taken to ensure the accuracy of this information, Ricoh makes no representation or warranties about the accuracy, completeness or adequacy of the information contained herein, and shall not be liable for any errors or omissions in these materials. Actual results will vary depending upon use of the products and services, and the conditions and factors affecting performance. The only warranties for Ricoh products and services are as set forth in the express warranty statements accompanying them.

