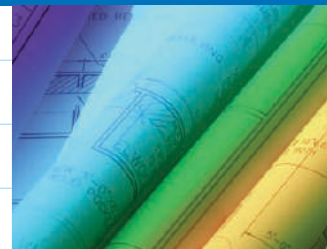


2400WD

> WIDE FORMAT
DIGITAL IMAGING SYSTEM

A new era
of wide format
productivity



Savin 2400WD

savin®

Savin 2400WD: The Digital Answer fo

The SAVIN 2400WD. The best of all worlds: fully featured, low-cost, and highly compact. And, it's just right for the budget, the space and the imaging needs of virtually any size architectural or engineering group. Architects, engineers, commercial and corporate workgroups, and government agencies often produce a limited volume of oversized printed documents. Up to now, these users couldn't be sure an investment in a Wide Format System was a wise one. With the Savin 2400WD, those doubts are a thing of the past.

The Savin 2400WD System is a Wide Format Digital Imaging System designed specifically for lower-volume users. It copies, prints and scans, yet its compact size won't eat up precious space in your facility. In short, it sets a new standard for small footprint, low cost, superior image quality and flexibility in a Wide Format System.



The Savin 2400WD: All the Wide Format Equipment You'll Ever Need

The Savin 2400WD Wide Format Digital System offers benefits and features you've probably always wanted for your office.

For starters, the Savin 2400WD is an ideal alternative to that costly, aging copier you've been thinking of replacing. It's much less costly to maintain and gives you features you've never had before.

Fast and Flexible

Speed and versatility? The Savin 2400WD is many times faster than an ink jet plotter, and it has the added value of scanning and copying, functions typically handled by two separate pieces of equipment.

And, as a replacement for the diazo machine you might still be using, it's unbelievably cleaner, easier and more versatile.

Still taking wide format documents to the copy shop across town to have copies made? With the Savin 2400WD, you'll save time and money, and you'll be turning out your work on your schedule and to your specifications.

In short, the Savin 2400WD is an excellent workgroup copier/printing system to replace or complement centrally located mid- to high-volume systems. Isn't now the time to eliminate all that wasteful walking around the building to retrieve documents?

Low-Volume Wide Format Users.



Digital Performance For All Your Imaging Tasks

It's A Copier

The Savin 2400WD gives you image quality you have to see to believe. Its 600 dpi resolution scanning and printing means sharp, clean lines, clear details and good solid fills. It has 256-grayscale levels. That means shading is always precise and true to the original. With the Savin 2400WD, you can also fine-tune your copies. Just select the copy mode – Text/Photo, Photo, Drawing, or Special – and the Savin 2400WD automatically adjusts image quality to match your original.

It's A Powerful High-Performance Printer

With the addition of the RW-240 Controller, printing directly from a CAD workstation to the Savin 2400WD is fast and easy. Request and manage more than two dozen tasks right from your CAD station. Multiple and collated sets, media selection, magnification, image rotation, border setting, account tracking, sample print and stamp printing are all at your fingertips. No more printing a single set on the pen plotter and then physically carrying the printed output to the copier to make multiple copies. The Savin 2400WD does it fast, exactly the way you want it.

Scanning, Storage and Retrieval

The Savin 2400WD and its RW-240 Controller scan option maintain drawings and plans in space-saving digital file format on hard drives, so users can burn files to a CD or store in virtually any network archiving system. You don't have to store those new documents in space-eating drawers and cabinets. You can now scan and save aging legacy documents as digital files, preserving the documents and saving space at the same time.



Electronic storage means retrieving documents faster. Documents can be pulled up, examined on the RW-240 Controller screen, edited, shared on a network, or printed. You can even edit images, extracting and adding new elements as desired. PDF scans can be attached to e-mails and sent anywhere in the world via the Internet or your company intranet. Think of the savings in shipping and delivery costs.

It's Easy To Use – Really

The Savin 2400WD has so many ease-of-use performance features that virtually anyone in the office can use it productively. The operating panel is easy to read and operate, and its LED screen guides users through even the most complex commands.

The Savin 2400WD can be configured in several different ways. At its simplest, the Savin 2400WD can sit on an optional table that allows manual feeding of cut sheet paper. Or, it can be fitted with an optional 500-foot paper roll tray table or a two-roll tray table, either of which can come with an optional paper cassette tray added for automatic feeding of cut sheets up to 12" x 18". Changing paper rolls is a snap. The roll-changing system features lightweight, convenient flange inserts for no-hassle changes.

The Savin 2400WD features two output trays. A space-saving upper output tray holds up to 25 sheets vertically at the top of the unit, within the machine footprint. An additional 20-sheet paper stacker tray drops copies out the back, down to the front and bottom of the unit.

Easy To Replace
Toner Cartridge

Easy Access
Clamshell Design



Roll Paper Tray

Manual Feed
Bypass Table

Universal Paper Cassette Tray
Holds Up To 12" x 18"

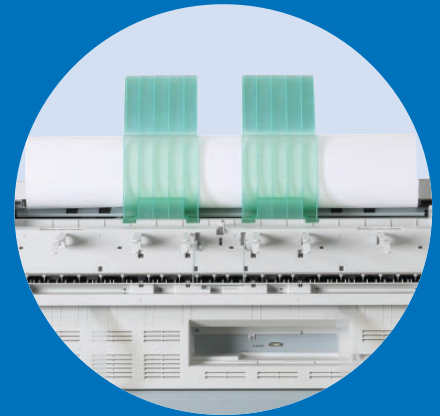
Dozens of Digital Features

The Savin 2400WD offers users time-saving, high-productivity digital features. The highlights include the following:

- **Reduction/Enlargement Choices:** Reduce and enlarge documents using preset values, specified ratios, auto R/E, directional magnification, and zoom for engineering and architectural applications in feet and inches or metric units.
- **Collated Sets:** The Savin 2400WD can copy or print complete collated sets of documents. Sequentially ordered sets can also be rotated and delivered to either output tray.
- **Stamping:** The Savin 2400WD, when configured as a copier only, offers optional stamping possibilities. Date, page number, and virtually any type of preset stored stamp can be placed in any position and orientation on the page.
- **Positive/negative reverse,** job preset and features such as overlay, erase, margin adjustment, and double copy give the Savin 2400WD the kind of versatility today's users demand.



Easiest roll paper changing in the industry



Copy/print output is easily accessible at the top of the Savin 2400WD



Up to three continuous paper feed choices

Savin 2400WD



Client PC (Windows OS)
RW-240 PLOTCLIENT
RW-240 PLOTCLIENT WEB
RW-240 WINPRINT



Client PC (AutoCAD drivers)
RW-240 PLOTCLIENT
HDI/ADI



Client PC (Bentley Systems Microstation driver)
Available Fall 2004
From Bentley Systems

Server PC (Windows 2000 or Windows XP)
RW-240 PLOTBASE
RW-240 PLOTCLIENT WEB ADMIN
RW-240 SCANTOOL

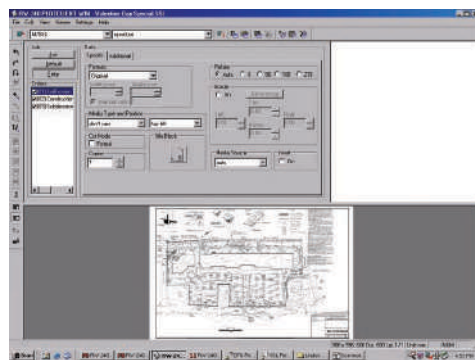


RW-240 Print Controller for fully functional network printing

Printing and Scanning: You Take Control

The RW-240 Print Controller and its PLOTBASE suite of software are the essential options that make the Savin 2400WD a versatile, fully functional network printer for virtually every wide format printing task.

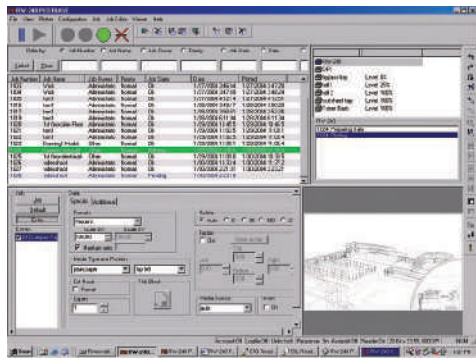
The RW-240 Controller's PLOTBASE server software acts as the system's print queue manager. It operates on either Windows 2000 Professional SP3 or Windows XP Professional SP1.



PLOTCLIENT Win: interface to create and send print jobs from workstations

The RW-240 SCANTOOL option, which is loaded onto the same PC server as PLOTBASE, enables the Savin 2400WD to scan original documents for editing, filing archives and printing. Scanning speed is up to 4 pages per minute with a resolution of 200 dpi.

SCANTOOL scans documents to a variety of raster file formats including single and multi-page TIFFs and Adobe PDF files.



PLOTBASE: manages the system's print queue

The RW-240 Controller's PLOTCLIENT software supports a wide variety of driver applications and operating systems to support differences at each client workstation.

- **PLOTCLIENT Win:** For CAD users to create and send print jobs from their workstations.

- **WinPrint:** Print drivers for Windows 95/98, NT4.0, 2000, ME and XP for printing from any Microsoft Windows application.
- **HDI/ADI:** Drivers enable printing from AutoCAD 13/14, 2000/2000i, LT2000/LT2000i and 2004/2004LT.
- **PLOTCLIENT Web:** Gives you the speed and convenience of creating and sending print jobs via the Internet or company intranet.

SCANTOOL: The Ultimate Upgrade

Today's high-tech work environments demand electronic document storage to save space and eliminate document retrieval delays. The RW-240 SCANTOOL option upgrades the Savin 2400WD copier/printer configuration to a complete copier, printer and scanner system.

The Right Choice

The Savin 2400WD is a productive and cost-effective solution for your wide format digital imaging needs.

For more information contact your authorized Savin dealer.



Savin 2400WD Specifications

COPIER

Configuration	Desktop
Paper Source	Three optional tables (must choose one option from below): 1. Manual Bypass Cut Sheet Feed Table 2. One Roll Tray Table With Manual Bypass 3. Two Roll Tray Table With Manual Bypass
Optional Paper Cassette Tray	The one and two roll tray table options each permit the addition of the Paper Cassette Tray which automatically feeds up to 12" x 18" cut sheet paper
Warm-up Time	Less than 2 minutes
First Copy	22 seconds (D size)
Copying Speed	4 cpm/ppm (D size); 2 cpm/ppm (E size)
Resolution	600 dpi x 600 dpi
Grayscale	256 levels
Grayscale Printing	2 levels
Reduction/Enlargement	16 presets: Zoom 25% to 200% in 0.1% increments; 200% to 400% in 0.2% increments
Multiple Copies	1 - 20
Cutting Method	Synchronized cut, preset cut, variable cut
Memory Capacity	80 MB; optional hard drive: 10 GB
Original/Copy Size	Maximum: 36" x 141"; Minimum: 8.5" x 5.5"; 36" x 78" bypass
Copy Exits	Top tray, Standard; Rear/Bottom, with Optional Roll Feed Table
Original Exits	Top; Rear Straight Path
Power Source	120V/60Hz; 15A
Dimensions (WxDxH)	42.5" x 25" x 23"
Weight	218 lbs. (Copier only)

COPIER OPTIONS

Cut Sheet Feed Table
One Roll Paper Tray Table
Two Roll Paper Tray Table
Universal Paper Cassette (Only with 1 or 2 Roll Paper Tray Table)
Hard Disk Drive (Required for Sorting, Stamping and Image Overlay)
Stamp Board
Roll Holders

PRINTER CONTROLLER RW-240 OPTION

PC Server Specifications	
Controller Type	External PC Server (Note: Server not included, must be purchased separately from an appropriate vendor)
PC System Requirements	
Operating System	Windows® 2000 Professional SP3 or Windows XP Professional SP1
Processor	Pentium 4, 1GHz
PCI	2.0 or higher x 1 slot (with 3.3V or 5V auto adaptive)
System Memory	At least 512MB RAM for scanning or drawing to maximum size
Hard Drive	At least 10 GB memory
Network Interface	10/100 Base T Ethernet, TCP/IP configuration
Monitor	At least 1024 x 768 pixels resolution
Maximum Speed	4 ppm (D size), 2 ppm (E size)
Network Protocol	TCP/IP, IPX/SPX, lpr/lpq, HTML, SMB
PC Interface Slot	PCI 2.0 or higher x 1 slot (with 3.3V or 5V auto adaptive) Max. Load 5A
Print Controller	Supported Output File Formats: HP-GL, HP-GL2, HP-RTL, TIFF, Calcomp 906/907, WMF, BMP, CALS, T6X, CIT, PCX
Optional	PostScript 3 (for PDF printing and scanning), CGM (Computer Graphics Metafile)
Unix Support	Redhat Linux 6.x-7.1; HP-UX 10.x/11.x; Sun Solaris 2.67.x/8.x; SCO Open Server 5.x (up to 5.06)
Print Controller Features	Account Tracking, Auto Paper Select, Border Setting, Entry Collation, Help, Image Rotation, Limitless Paper Feed, Locked Print, Magnification, Media Selection, Mirror Image, Multiple Copy, Output Tray Select, Pen Settings/Stamping, Roll/Media Select, Sample Print, Status Monitor

SCANNING OPTION

Controller Type	External PC Server (Same as for Print Controller)
Maximum Speed	4 ppm (D size)
Resolution	150 - 600 dpi (1200 dpi with enhancement)
Scan Size	8.26" x 7.16" to 35.98" x 236"
File Formats	TIFF Single and Multi page (uncompressed/G3/G4), T6X, BMP, RLC, HP-RTL, PCX, CALS 1&2, PDF (Single and Multi-Page).
Reading Area Setting	Auto, Fixed, User Defined
Continuous Input	Batch Scanning, Scan to File with Autaname, Save Multiple Page Document in One File (PDF or TIFF)
Scanning Modes	Single Copy, Set Copy, Batch Scanning, Archiving, Integrated Editor
Scanner Software	SCANTOOL
Controller Options	RW-240 Controller Controller Interface PCB Type 240 Scan Option PostScript 3 (Emulation) CGM (Computer Graphics Metafile)

Savin®

Savin Corporation Stamford, Connecticut 06904 ©2004 Savin Corporation.
SAVIN® is a registered trademark of Savin Corporation.
All other trademarks are the property of their respective owners.
Product specifications subject to change without notice.

Printed in U.S.A. on recycled paper. (S1946) 35M 3/04

