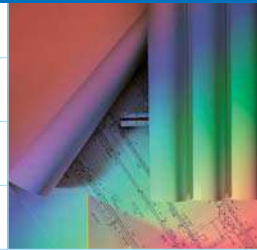


Savin 4800WD

> WIDE FORMAT
DIGITAL IMAGING SYSTEM

Revolutionary
wide format
quality and
efficiency.



Savin
4800WD

savin®

Savin 4800WD. Empower your staff,

Today, it's not enough to create breakthrough engineering or design concepts. The industry has become so competitive that every facet of your business must also run as fast and efficiently as possible. Introducing the Savin 4800WD Wide Format Digital Imaging System.

Designed to be used by walk-up operators, the Savin 4800WD combines simplicity of operation with today's tremendous advances in digital imaging, storage and communications. It's the faster, more streamlined, easier way to reproduce and distribute your wide format documents. It means you no longer have to outsource your work to external vendors or set up dedicated internal repro centers. And it maximizes productivity in this critical area of your business.

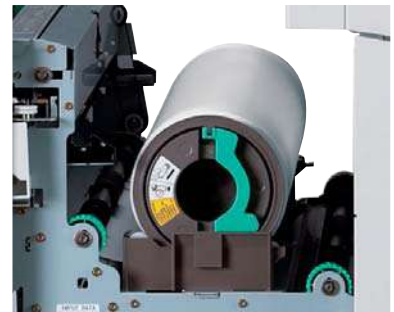


Designed To Make Wide Format Copying Easy

With the Savin 4800WD, virtually anyone in your organization can now print, reproduce and efficiently distribute wide format documents – in many cases without leaving their desks.

- **Easy to operate:** Inspired by copier technology, the back-lit, touch-screen panel and hierarchical tool menus are all designed for intuitive, first-time understanding in a walk-up environment.
- **Easy to reach:** Everything you need for operation is accessible from the front, including paper drawers, toner and all controls.

- **Easy to change paper:** The Savin 4800WD makes changing paper easier than any other wide format digital imaging system available today. And with its standard two-roll tray – as well as an optional two-roll drawer or two optional cassette trays for cut sheets – you can effectively double your time between paper changes.



Roll-paper changing is the easiest in the industry.



Client PC (Windows OS)
RW-480 PLOTCLIENT
RW-480 PLOTCLIENT WEB
RW-480 WINPRINT



Client PC/Mac (AutoCAD drivers)
RW-480 PLOTCLIENT
RW-480 PLOTCLIENT MAC
(PPD File)
HDI/ADI



Client PC (Bentley Systems Microstation driver)

Server PC (Windows 2000 or Windows XP)
RW-480 PLOTBASE
RW-480 PLOTCLIENT WEB ADMIN
RW-480 SCANTOOL

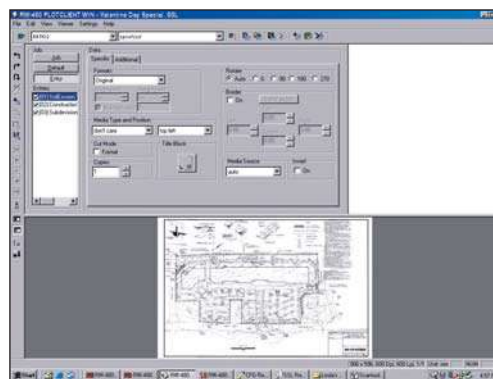


RW-480 Print Controller for fully functional network printing

Powerful Options For Printing

As powerful as the Savin 4800WD is alone, it is even more impressive when you add the optional RW-480 Controller along with PLOTBASE and PLOTCLIENT software.

- Print directly from CAD, Windows and UNIX applications.
- Scan and print documents up to 49 feet long.
- Create secure CAD documents by printing DWF documents and scanning to DWF format – without having to use AutoCAD.
- Eliminate having to wait for drawings to print on slow, inefficient inkjet plotters by sending drawings directly to the Savin 4800WD.



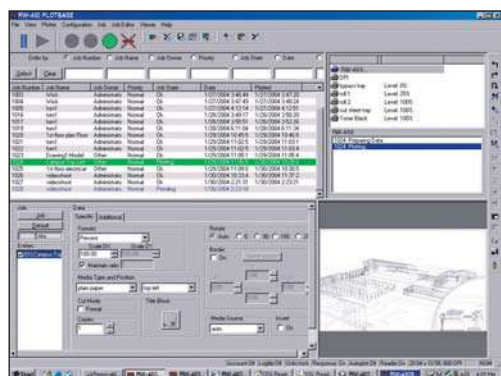
PLOTCLIENT: Interface to create and send print jobs.

- Program the system to prioritize print jobs from multiple users across your organization.
- Offer your remote designers or clients the convenience of transmitting their print jobs over the Internet.

And if you add the SCANTOOL option, you can:

- Scan-to-File for archiving, editing images, merging images or creating sets or multi-page documents.
- Scan-to-PDF with the Postscript™ option.
- Scan-to-DWF with the DWG/DXF/DWF option.

For more information contact your authorized Savin dealer.



PLOTBASE: Manages the system's print queue.

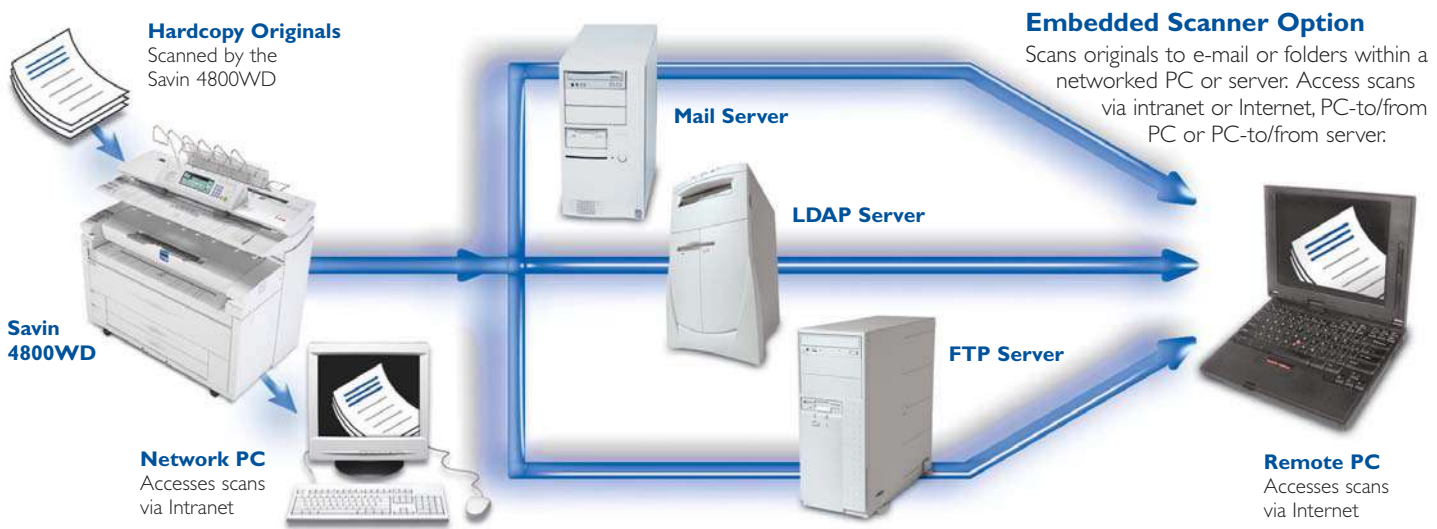
Your Partner In Environmental Solutions

The Savin 4800WD is Energy Star® compliant, continuing our longstanding commitment to developing office solutions with superior energy and supply-saving features, including:

- Quick Start-Up (QSU) technology
- Power-saving Sleep modes
- Duplex and Combine Copy modes
- Toner recycling
- Low noise levels
- Minimal ozone emissions



speed your workflow.



Fast And Easy Storage, Instantly Accessible Documents

With the Savin 4800WD you no longer have to recopy your frequently used documents. Its built-in 80 GB document server can store multiple large document sets for up to 180 days, allowing instant storage and reprinting on demand. You can edit, combine images, reduce or enlarge, and even stamp your documents before you file or retrieve them.

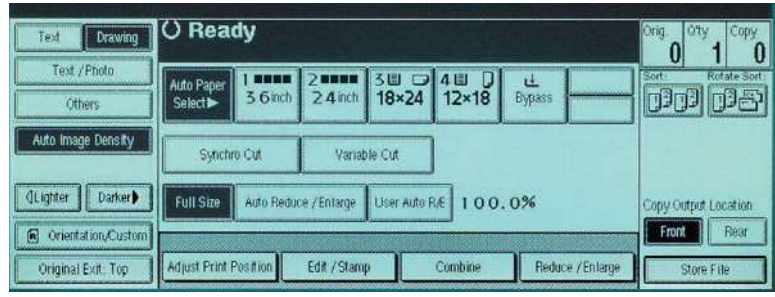
And to further improve resolution and produce the highest quality images possible, the Savin 4800WD includes a “drawing” menu in the list of original types, ensuring the finest possible lines in your copies.

Cut Document Sharing Costs With Embedded Scanning

Distributing your wide format documents to end-users in remote locations is often as critical as creating the documents themselves. With its Scan-to-E-mail capability, the

Savin 4800WD lets you scan your documents and send them immediately to anyone with an e-mail address, reducing your dependence on costly overnight couriers.

Making this process even more streamlined is the system’s LDAP search capability, which lets you download unlimited recipient names directly from your company’s corporate address book or current e-mail system.



The back-lit touch-screen control panel is easy to use.

- **Simplify storage and retrieval:** Using SMB or FTP protocol in the Scan-to-Folder feature, the Savin 4800WD allows you to scan directly to a folder on the hard drive. So there’s no more sorting through stacks of hard-copy documents for your latest revision.

Embedded Scanner Option

Scans originals to e-mail or folders within a networked PC or server: Access scans via intranet or Internet, PC-to/from PC or PC-to/from server.

Now your documents are not only filed in easy-to-access locations, but also accessible for revision and review by any designated user on your LAN or WAN.

- **Easily convert legacy blueprints:** Converting your blueprints to the new, easier-to-read, black-and-white format is a simple, one-step process with the TWAIN driver. Just select “diao,” scan, and you instantly get clean, crisp, high-resolution black-and-white prints.

A Better Way To Manage

You have more important things to do in your day than manage your equipment and peripherals. To minimize this responsibility, the Savin 4800WD allows you to do it quickly, easily and efficiently – right from your desktop. You can rapidly do everything from checking status levels of paper and toner to viewing thumbnails of jobs and saving them anywhere on your network.

One Of Three Original Exits

Easy-Access Clamshell Design

Manual Feed Bypass Table

Two-Roll Paper Tray



Backlit Touch-Screen Control Panel

One Of Two Output Exits

Easy-To-Replace Toner Cartridge

Paper Cassette Trays (Option)

Holds up to 18" x 24" paper

Complete Security For Even Your Most Sensitive Documents

Today, it's more important than ever to protect your work, and the Savin 4800WD features the latest technologies to ensure that your documents – and your system – are never compromised.

- **Screen out unauthorized users:** Keeping your work secure is simple with the Savin 4800WD. Its Windows Authentication feature requires users to input their names and passwords before being allowed access to the



printer – simple, effective, smart security for a new age.

- **Prevent data interceptions:** The Savin 4800WD automatically encrypts all of your electronic data as it travels between your computer and the printer.
- **Eliminate “latent images”:** Images that remain temporarily on the hard drive after a job is copied, printed or scanned can be automatically overwritten with random data in the Savin 4800WD. So even if your entire system were stolen, your data would be safe.



The Savin 4800WD offers up to four continuous paper feed choices.



Copy/print output is easily accessible at the top of the Savin 4800WD.



The convenient clamshell design puts everything you need within easy reach.

Savin 4800WD

Savin 4800WD Specifications

COPIER SPECIFICATIONS

Configuration	Console
Copying/Printing Process	Electrophotographic Printing
Paper Source	Two (2) Rolls
Optional	Paper Cassette Trays (2) Two-Roll Paper Drawer
Warm-up Time	Less than 2 minutes
First Copy	25 seconds (E size)
Copying Speed	8 cpm/ppm (D size); 4.5 cpm/ppm (E size), 3.93 ips
Resolution	600 dpi x 600 dpi
Gray Scales	256 levels
Gray Scale Printing	2 levels
Reduction/Enlargement	16 presets: Zoom 25% to 200% in 0.1% increments; 200% to 400% in 0.2% increments
Multiple Copies	1-99
Cutting Method	Synchronized cut, preset cut, variable cut
Standard Memory	1 GB
Standard Hard Drive	80 GB
Standard	Interface to external PC for RW-480 Controller
Original/Copy Size	Maximum: 36" x 590" (49'); Minimum: 8.5" x 7"; 36" x 78" bypass
Original Exits	Top, Top Rear Curled, Rear Straight Path
Copy Exits	Front: Capacity 99 D sheets paper; Rear: 10 E Sheets
Power Source	120V/60Hz; 20A
Dimensions	50" x 30" x 47"
Weight	507 lb.

COPIER FEATURES

Auto Magnification Selection
Auto Paper Selection
Backlit Touch-Screen Control Panel
Combine Originals: 2 in 1, 4 in 1, 8 in 1
Document Server: Stores up to 375 D size documents
Editing Capabilities: Erase, Format Overlay, Image Shift, Margin Adjustment,
Mirroring, Negative/Positive, Partial Copy
Emergency Stop; Interrupt Mode
Job Program (10 Jobs)
Original Types: Background Line, Drawing, Generation, Pasted Original,
Text/Photo
Proof Copy
Stamp: Preset (8), Custom (4), Page, Date

COPIER OPTIONS

Embedded Scanner	Scan-to-Email & Folder, Network TWAIN, Security
Original Catch Tray	37" (w) x 31" (d) x 44" (h); 30 sheets, 25 lb.
Paper Cassette Unit	Paper Size Max. 24" (w) x 18" (l), Cap. 250 Sheets, 132 lb.
Roll Feeder	Optional 2nd Drawer holding two rolls, 36" up to 590"
Roll Holders	Two Rolls, 36" x 590" (49'), Max. Roll Diameter 6.88"

RW-480 Controller & Options (see next column)

PRINTER CONTROLLER RW-480 (OPTION)

PC Server Specifications	External PC Server (Note: Server not included, must be purchased separately from an appropriate vendor)
Controller Type	
PC System Requirements	Windows® 2000 Professional SP3 or Windows® XP Professional SP1
Operating System	2.0 or higher x 1 slot (with 3.3V or 5V auto adaptive max. load 5V)
Processor	Pentium® 4 or higher, 1GHz
PCI Interface Slot	Min. 2G for 49' printing/scanning, Min. 512 MB for </=19.5' printing/scanning
RAM Memory	At least 10 GB memory
Hard Drive	10/100 Base T Ethernet, TCP/IP configuration
Network Interface	At least 1024 x 768 pixels resolution
Monitor	TCP/IP, IPX/SPX, lpr/lpq, HTML, SMB, EtherTalk
Network Protocol	
Print Controller	
Maximum Speed	8 ppm (D size documents)
Supported Output	HP-GL, HP-GL2, HP-RTL, TIFF, Calcomp 906/907, WMF, BMP, CALS, T6X, CIT, PCX
File Formats	Redhat Linux 6.x-7.1; HP-UX 10.x/11.x; Sun Solaris 2.67.x/8.x; SCO Open Server 5.x (up to 5.06)
Unix Support	
Mac Support	From Mac® OS 8.6 – Mac OS X 10.3
Options	PostScript™ 3 (for PDF printing and scanning); DWG/DXF/DWF CGM

PRINTER CONTROLLER FEATURES

Account Tracking	Mirror Image
Auto Paper Select	Multiple Print Sets
Border Setting	On-line Help
Collation	Output Tray Select
Combine Images	Pen Settings/Stamping
Device Status Monitor	Print Queue Management
Image Rotation	Print-to-Document Server
Limitless Paper	Print/Scan up to 49'
Locked Print	Remote Print via Internet
Magnification	Roll/Media Select
Media Selection	Sample Print

SCANNER RW-480 (OPTION)

Controller Type	External PC Server (Same as for Print Controller)
Maximum Speed	8 ppm (D size)
Resolution	150-1200 dpi
Scan Size	8.5" x 11" – 35.98" x 590"
File Formats	TIFF Single and Multi Page (uncompressed/G3/G4), T6X, BMP, RLC, HP-RTL, PCX, CALS 1 & 2, Optional PDF (Single and Multi-Page), Optional DWF
Reading Area Setting	Auto, Fixed, User Defined Continuous Input Batch Scanning, Scan-to-File with Autoname, Save Multiple Page Document in One File (PDF or TIFF)
Scanning Modes	Single Copy, Set Copy, Batch Scanning, Archiving, Integrated Editor
Scanner Software	SCANTOOL

CONTROLLER OPTIONS

RW-480 Controller
Scan Option
DWG/DXF/DWF Option (Print w/o AutoCAD; Scan-to-DWF w/Scan Option)
Postscript 3 (Emulation) Option
CGM (Computer Graphics Metafile) Option

Savin®

Savin Five Dedrick Place, West Caldwell, NJ 07006
SAVIN® is a registered trademark of Ricoh Corporation. Windows® and Windows® 95/98/Me/NT4.0/2000/XP are registered trademarks of Microsoft Corporation. Macintosh®, Mac® OS and AppleTalk® are registered trademarks of Apple Computer, Inc. Adobe® and PostScript® are registered trademarks of Adobe Systems, Inc. PCL® is a registered trademark of Hewlett-Packard Company. RPCS™ is a trademark of Ricoh Company, Ltd. All other trademarks are the property of their respective owners. Print speed may be affected by network, application or PC performance. Specifications and external appearances are subject to change without notice. Products are shown with optional features.
♻️ Printed in U.S.A. on recycled paper. (S2151)

