

Aficio™ MP 2352SP/2852SP//3352SP



Eco-friendly, highly compact and secure



RICOH

The stylishly designed Aficio™MP 2352_{SP}/2852_{SP}/3352_{SP} are black & white A3 MFDs, packed with advanced features for cost-effective copying, local printing via USB, fax communications and network scanning. Yet all this comes in a highly compact package; these devices are the smallest footprint A3 MFDs in their range. With short warm-up times and fast speeds, these devices increase office productivity. Standard duplex, colour scanning, a high paper capacity and wide media handling capabilities extend their versatility. These A3 MFDs offer you the functionality you need at a price you can afford.



Black & White

These mono MFDs have a resolution of 600dpi which produces quality black & white prints.



Fast printing up to 33 pages per minute (ppm)

Fast printing at 23ppm for the MP 2352_{SP}, 28ppm for the MP 2852_{SP} and 33ppm for the MP 3352_{SP} – quickly handle even the most demanding jobs.



Easy on the environment

With a number of eco-friendly and money saving features, these devices are kind to both the environment and your budget. Low power consumption reduces their carbon footprint.



Print, Copy, Scan, Fax (optional)

These MFDs offer print and copy along with Super G3 faxing and colour scanning.



Enhanced security

HDD encryption and HDD overwrite features ensure your data remains fully protected.



Optimise your productivity

These devices need less than 20 seconds to warm up and produce their first copy in just 5.4 seconds or less (4.5 for the MP2852_{SP}/3352_{SP})

The MP 2352_{SP}/2852_{SP}/3352_{SP} are productive, user friendly black & white multifunctional devices (MFDs).



Seamless integration

Today, multifunction devices have remarkable capabilities. Whether you're faxing, scanning, copying or printing, the output is high quality. They produce hardcopies at faster speeds and turn scans into dynamic files.

But at Ricoh we go further and our motto speaks for itself: "Believe in a better way"

Our products can be seamlessly integrated into your business and are developed to be intuitive to your specific needs. With our Business Solutions Group, we are always finding better ways for you to do business with the help of your Ricoh device. Not only will Ricoh's range of multifunction devices and software solutions improve your organisation's efficiency and productivity, it will also reduce your impact on the environment.



Improve your workflow

These network ready devices distribute documents quickly by scanning – in colour if required – to email, FTP, SMB or NCP. Print directly from a USB or SD card, without having to switch on your computer. These devices are also fax-friendly, incorporating a Super G3 modem, internet fax, IP-fax and LAN-fax.



Professional faxing

The MP 2352_{SP}/2852_{SP}/3352_{SP} receives and outputs faxes quickly and can also distribute incoming faxes to email or folders, reducing costs and your carbon footprint. Users can conveniently transmit faxes directly from their own computer (LAN Fax) while also reducing their costs by using the internet for long distance faxing (internet fax). Faxing costs can be virtually eliminated by transmitting fax data over IP network (IP fax).

Wide media versatility

Two standard paper trays and a 100-sheet bypass tray offer a capacity of 1150 sheets. This is increased to 3150 sheets by adding a 2000-sheet Large Capacity Tray. You can opt for the space-saving 500-sheet internal finisher, while other possibilities include a 500- or 1000-sheet external finisher and a 1000-sheet booklet finisher. Best-in-class image quality allows you to produce professional, attractive documents in-house.



Simple to operate

The large LCD colour touch panel is easy to use and provides clear, step-by-step installation, operation and maintenance guidance. Maximum uptime is ensured through full front access and front-loading trays, which speed up replacement and maintenance procedures.

A polished finish

Produce professional quality reports, booklets and more with the following finishing options:

- 500-sheets internal or external finisher
- 1000-sheets external finisher
- 1000-sheets booklet finisher (see image)



Highly secure

All of these devices incorporate the latest level of security features to meet your requirements in this area. They support security standard IEEE2600.1. HDD encryption and HDD overwrite are standard features so your data remains fully protected. Device access can also be controlled through user code, Windows & LDAP authentication.



Save space

Thanks to Ricoh's innovative Simple Cube Design, these are the smallest A3 MFDs in their range. Both the optional internal finisher and standard envelope printing capability are built-in, which reduces the number of protruding parts. Their compact footprint saves valuable office space.

Beyond scanning

Move beyond simple scanning with optional software that can:

- Provide OCR (Optical Character Recognition) capabilities with ESA Transformer – you can scan a hardcopy document into an editable format such as Microsoft Word, Excel, PowerPoint, PDF and more.
- Automate your document scanning and routing. GlobalScan NX* makes it easier to incorporate paper documents (such as invoices, purchase orders and bills) into your digital workflows.

* Version 1.4.4.0 or later



ESA Transformer
Graphical icons for ease of use



GlobalScan NX
Project based scanning meets the needs of different business documents

Count your carbon

The Ricoh @Remote Intelligent Management System monitors Ricoh networked devices to track a variety of environmental metrics related to how much energy and paper each Ricoh device consumes:

- Learn how many sheets of paper are used from month to month
- Track the percentage of jobs that use duplex or combined printing or copying, which can help cut paper consumption and paper expenses significantly. The data is presented in CO₂, trees & cost savings
- Analyse how much electricity the MP 2352SP/2852SP/3352SP consume monthly* and track energy saver setting changes to ensure a minimal environmental impact

* Formulas obtained from US Environmental Protection Agency - US Department of Energy



Track trends in energy consumption over time



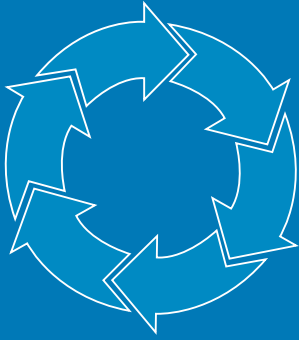
Translate usage data into reports that detail CO₂ reduction trends



Environmentally friendly

At Ricoh we help you lower the environmental impact of your office as well as lower your cost. These devices have eco-friendly and money-saving features such as short warm-up time, ultra-low sleep mode, high toner yield, standard duplexing and quota setting. In addition, Ricoh products are Energy Star compliant. This means less CO₂ is produced in providing the energy needed to run Ricoh devices.

Solutions



Business Solutions Group

When you buy a Ricoh device you gain access to our Business Solutions Group – a dedicated software support centre. Come to us with your challenge and we will identify the solution, source it internally, or develop one specifically to suit your business and integrate into your existing systems.

The Business Solutions Group works closely with customers and application developers to extend the efficiencies of Ricoh's software-enabled copiers and printers in order to meet specific business needs.

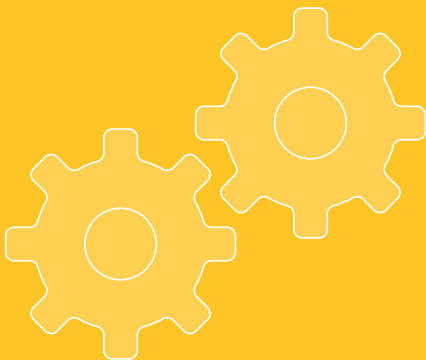
Environment



We've reduce our carbon footprint, have you?

At Ricoh we are using our expertise in innovation to deliver products that exceed in both performance and environmental sustainability. From green product design, manufacture of energy efficient office solutions, right down to the collection and recycling of our products; everything we do helps reduce usage of energy and resources, even as we push the limits of technology and productivity.

Service



Responsible Service

At Ricoh we are dedicated to offering our customers the highest level of service and maintenance; that is why our service response times average a mere four hours and you have access to over 500 manufacturer-trained technicians across the country.

To place a service call or to speak with one of our friendly customer service agents, simply phone our national contact centre on 1800 181 002 between 8am – 8pm EST.

Manage your printing

- Secure your information
- Cut costs and increase efficiency
- Centralise frequently used documents
- Improve your customer relationship management with personalised printing

Manage your documents

- Share information quickly and easily through your business
- Save time by scanning directly into applications used by your organisation
- Easily consolidate paper and electronic documents and processes

Manage your devices

- Meter reads and billing
- Usage reporting
- Matching device location to workload
- Efficiency optimisation and cost reduction

Machine Recycling Program

We have a free program designed for our customers to recycle their Ricoh machines once they have reached the end of their life. Since launching in 2002, we have successfully recycled over 180 tonnes of Ricoh machines into reusable materials.

Consumables Recycling Program

Ricoh's Consumables Recycling Program – the first in Australia – will ensure your toner cartridges are fully recycled with zero waste to landfill. Since the program's inception in 2001 we have diverted over 525 tonnes of material from landfill.

Ensuring efficient customer service

We use a multi-layered approach to customer service to underpin our promise of total reliability. Good customer service starts with our branch Customer Service Representatives and continues through an Online Service Centre, National Contact Centre and National Technical Support. If necessary, issues can be referred to the Regional Support Centre in Singapore or the Global Support Centre in Japan.

Each layer of service is continually improved to ensure it remains world-class and delivers on our promise of reliability.

Believe in a better way



Specifications

Copier

Copying process:	Single laser beam scanning & electrophotographic printing	
Copy speed:		
MP 2352SP:	23 copies per minute	
MP 2852SP:	28 copies per minute	
MP 3352SP:	33 copies per minute	
Resolution:	600 dpi	
Warm-up time:	Less than 20 seconds	
First output speed:		
MP 2352SP:	Less than 5.4 seconds	
MP 2852SP:	Less than 4.5 seconds	
MP 3352SP:	Less than 4.5 seconds	
Memory: Maximum:	1 GB + 120 GB HDD	
Paper input capacity:		
Maximum:	3,150 sheets	
Paper output capacity:	Maximum: 1,600 sheets	
Paper size:	A6 - A3	
Paper weight:		
Paper tray:	52 - 157 gsm	
Bypass tray:	52 - 157 gsm	
Duplex tray:	52 - 105 gsm	

Dimensions (W x D x H):

587 x 653 x 829 mm (with ARDF)

Weight: less than 75 kg with ARDF

Power source: 220 - 240 V, 50/60 Hz

Power consumption:

Maximum: Less than 1.6 kW

Energy Star TEC:

MP 2352SP: 2050Wh

MP 2852SP: 2390Wh

MP 3352SP: 2511Wh

Printer

Print speed:		
MP 2352SP:	23 pages per minute	
MP 2852SP:	28 pages per minute	
MP 3352SP:	33 pages per minute	
Printer language:		
Standard:	PCL5e, PCL6, Adobe PDF Direct,	
Option:	Adobe® PostScript® 3™, IPDS	
Resolution:	Maximum 600 x 600 dpi	
Interface:		
Standard:	1 x USB 2.0 Print Interface, 2 x USB Host TypeA Interface, 100BASE SE - TX/10BASE T	
Option:	IEEE 1284/ECP, Wireless LAN (IEEE 802.11a/b/g), Bluetooth, Gigabit Ethernet	

Network protocol: TCP/IP (IPv4, IPv6), IPX/SPX

Supported environments:

Windows® XP/Vista/7/Server 2003/Server 2008,
NetWare® 6.5 or later,
UNIX Sun® Solaris 2.6/7/8/9/10, HP-UX 10.x/11.x/
11iv2/11iv3, SCO OpenServer 5.0.6/5.0.7/6.0,
RedHat® Linux 6.x/7.x/8.x/9.x/Enterprise, IBM® AIX
v4.3/5L v5.1/5.2/5.3,
Macintosh X v10.2 or later, NDPS Gateway Network 6.5
(SP3 or later), IBM iSeries/AS400 using OS/
400 Host Print Transform, Citrix Presentation
Server 4.5/Citrix XenApp 5.0

Scanner

Scan speed:

Full colour: Maximum 45 ipm

B/W: Maximum 50 ipm

Resolution: Maximum 600 dpi

Original size: A5 - A3

Bundled drivers: Network TWAIN

Scan to e-mail: SMTP, TCP/IP

Scan to folder: SMB, FTP, NCP protocol

Software Solutions

Standard: SmartDeviceMonitor™

Web SmartDeviceMonitor™

Web Image Monitor

Option: ESA Transformer

GlobalScan NX

Fax

Circuit: PSTN, PBX

Compatibility:

ITU-T (CCITT) G3, ITU-T (T.37) Internet Fax,

ITU-T (T.38) IP Fax

Modem speed: Maximum: 33.6 Kbps

Scanning speed: 0.5 seconds (A4/SEF/standard mode)

Memory capacity: 4 MB standard, 36 MB max.

Memory backup (1 hour): Yes

Other options

50-sheet ARDF
Platen cover
2 x 550-sheet paper trays
2,000-sheet LCT
100-sheet one-bin tray
250-sheet internal shift tray
500-sheet internal finisher
500-sheet external finisher
1,000-sheet finisher
1,000-sheet booklet finisher
2/4 + 3 Punch kits
Bridge unit
PostScript 3 unit, IPDS unit,
Print from USB2.0/SD slot
Fax option
G3 interface unit (max 2)
32 MB memory unit for fax
Bluetooth interface
IEEE 802.11 a/g interface
Gigabit Ethernet board
IEEE 1284 interface board
File format converter
Browser unit for HotSpot Printing
Counter interface unit
Professional software solutions

For availability of models, options and software, please consult your local Ricoh supplier.

RICOH

