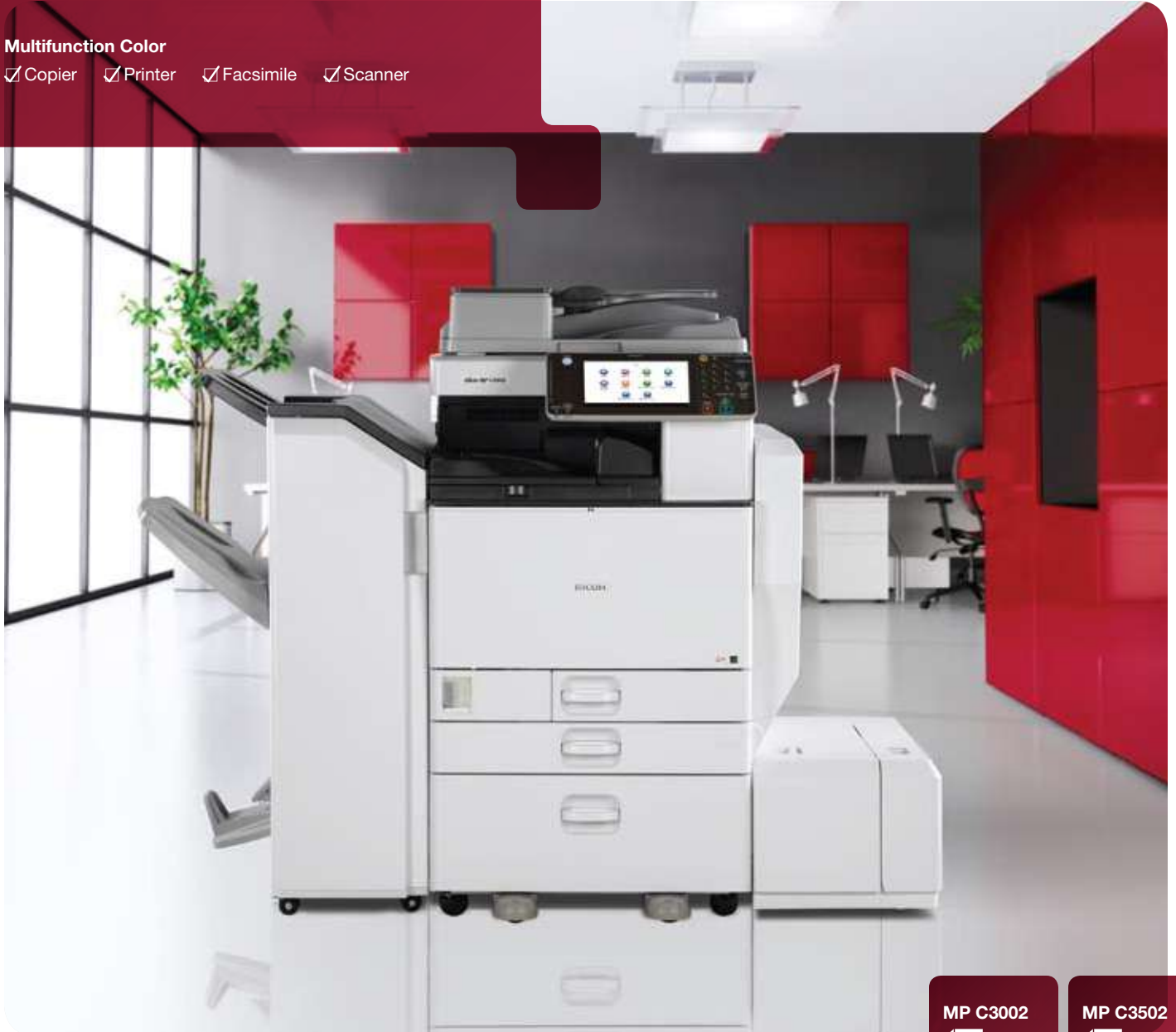


RICOH

Ricoh Aficio MP C3002/MP C3502

Multifunction Color

Copier Printer Facsimile Scanner



MP C3002

30
ppm

monochrome
and full-color

MP C3502

35
ppm

monochrome
and full-color

Busy has never looked so easy

A fast-paced workplace offers something new and exciting every day. It's time your Multifunction Product (MFP) does, too. The versatile RICOH® Aficio® MP C3002/MP C3502 Series delivers high-quality, full-color performance to streamline your unique workflow demands. These innovative MFPs leverage advanced capabilities found only in Ricoh's services-led platform to simplify even the most complex printing, copying, scanning, and distribution tasks. With robust security features, impressive finishing capabilities and eco-friendly operation, these MFPs manage heavy workloads with exceptional efficiency. Choose it to be the primary system for your workgroup or as an integral part of the Ricoh Managed Document Services (MDS) strategy to help enhance productivity and reduce total cost of ownership throughout your organization.

- Produce 30-35 color prints/copies per minute
- Enjoy versatile performance in an intelligent, compact design
- Take advantage of convenient, customizable one-touch home screen operation
- Support environmental and security best practices and standards
- Improve efficiency with powerful administrative tools



Improve every aspect of your output environment

Enjoy efficiency and quality

Customize your user interface

This system sets a new standard for intuitive operation. Users can quickly and easily customize the operations panel home screen with their own company logo, workflows, preferences and settings — bringing speed and convenience to every job. You can also tilt the panel and lock it in a position that is ergonomically comfortable.



Control individual or group usage

Reducing waste has never been easier. The system allows administrators to set quotas for individuals or workgroups, which helps control costs associated with paper, supplies and energy consumption. An Eco-Friendly Indicator helps minimize costs by providing paper usage histories for specific users and certain job types.



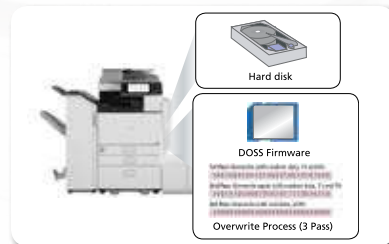
Print reliably, with better quality

For professional-looking documents, Ricoh's advanced PXP-EQ toner delivers crisp, monochrome and color reproduction every time. The newly designed fusing technology measurably shortens the sleep-to-operate time, which improves image quality and reduces power consumption.



Protect your documents and data

The Ricoh Aficio MP C3002/MP C3502 Series incorporates a host of state-of-the-art security features that helps with security compliance requirements — both yours and the organizations you serve. For example, passwords and user authentication help prevent unauthorized copying or printing. By utilizing DOSS, information is overwritten on the Hard Disk Drive.





Full-featured, performance enhancing

Produce high-quality documents — fast

The Ricoh Aficio MP C3002/MP C3502 Series offers a powerful integration of speed and reliability that improves both personal and workgroup productivity. This system prints or copies up to 35 pages-per-minute. An impressive warm-up time of less than 20 seconds means faster output and less waiting. Individual copies in as little as five seconds. A choice of three finishing options — including a 1,000-Sheet Booklet Finisher — adds a professional touch to any document.



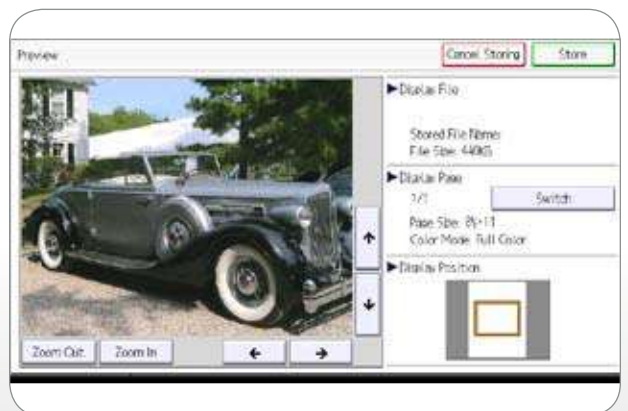
Take advantage of powerful connections

Enjoy full compatibility throughout the office with a host of network capabilities engineered specifically to enhance efficiency. Print from most manufacturers' mobile devices by downloading their application for convenient output when and where it is needed most. Generate output at the device using a USB memory or SD card for convenience and flexibility.



Share documents with greater speed and confidence

This new series lets you scan, share and store documents quickly and easily. You can scan full-color or monochrome originals and share them instantly with Scan-to-Email/Folder/HDD. Preview full-color thumbnails of scanned pages to ensure quality and accuracy before distributing them. Access LDAP-registered directories and information, including Home Directory, for fast, convenient scanning and easier, cost-effective administration. This system also offers PDF/A support and High Compression PDF features, which allow you to compress file sizes for faster, more reliable distribution.



Personal, powerful and secure

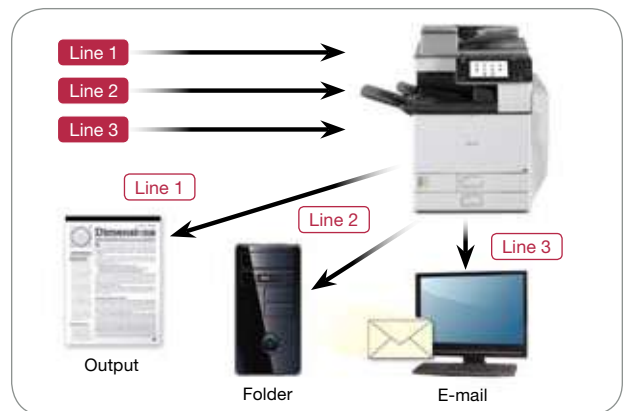
Work the way you want with customizable features

Configure the Ricoh Aficio MP C3002/MP C3502 Series to align perfectly with the way you like to work. A tiltable, full-color control panel features a customizable, personal Home Screen. You can quickly configure workflows, choose icons and create convenient single-step shortcuts for frequently used operations. Assign personal preferences and selected functions to five, one-touch function keys. An external keyboard can be connected via a USB port to accommodate users who prefer traditional keyboard input to a touch screen. A time-saving Auto Job Promotion feature elevates jobs higher in the print queue if they are being blocked by jobs stopped due to errors.



Depend on efficient, reliable fax communications

An innovative Fax Connection option opens fast and streamlined communications with other Ricoh devices on the same network. This connection simplifies the infrastructure required for fax communications and keeps operating costs low. Connect up to three analog lines and greatly expand your fax capacity and reduce or eliminate network bottlenecks. You can also use the Internet Fax feature to distribute documents directly to e-mail addresses and eliminate long-distance costs. Inbound faxes can be automatically forwarded to e-mail addresses, network folders or the system hard drive.



Protect hardcopy and electronic documents

With the DataOverwriteSecurity System (DOSS) feature, the MFP will automatically destroy latent images and data stored on the internal HDD. The encryption feature will encrypt your address book, authentication information, and your stored documents on the MFP. Password-protected and user-specific authentication helps provide a secure line of defense. Enhanced encryption helps to ensure a high global standard of information security. You can also store a print job at the device until an authorized user swipes their ID card or enters their ID information at the control panel to release it. Unauthorized Copy Control prevents fraudulent duplication of sensitive documents.





Manage your fleet with efficiency and precision

Simplify administrative tasks and system upgrades

A number of easy-to-use tools allow you to simplify virtually every type of job. You can dramatically reduce costs associated with wasted output by establishing print and copy quotas for as many as 1,000 users. Ricoh's Web Image Monitor lets you configure system settings, manage address books and monitor device status. Remote firmware upgrades make it easy to capitalize on the latest technology and optimize system performance.



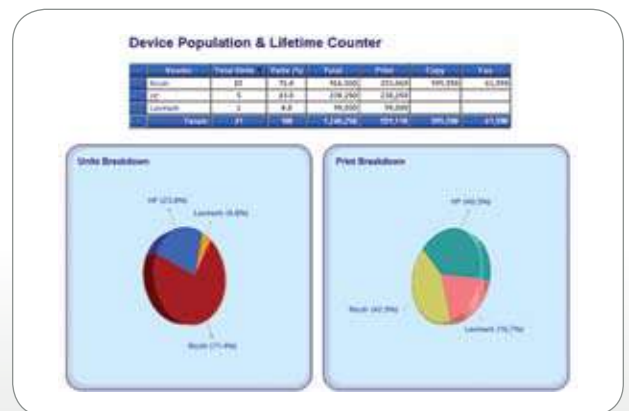
Help minimize environmental impact, maximize savings

Ricoh's commitment to environmental responsibility is reflected in the design of this innovative system. You can measurably reduce your paper consumption by encouraging users to take advantage of the high-performance automatic duplexing — for both copying and printing. A built-in Eco-Friendly Indicator tells users how much they or their workgroups have saved by using two-sided printing capabilities. To minimize energy use and wait time, the Ricoh Aficio MP C3002/MP C3502 Series consumes only 1 watt while in Sleep Mode and recovers in less than 8 seconds.



Take control with user-friendly tools

Ensure your networked devices operate at peak efficiency via intuitive system management, device monitoring, troubleshooting and other administrative tools. Configure, organize and diagnose network devices remotely by accessing Web SmartDeviceMonitor from any standard web browser. Automate service calls and the collection of critical device data with @Remote™ software. You can even request e-mail alerts, so you'll know the moment supplies are low or an error is detected.



Comprehensive features in a compact design



Ricoh Aficio MP C3502

- 1** Easy access and intuitive operation on the home screen via the large 8.5" full-color LCD control panel
- 2** Standard 50-sheet Automatic Reversing Document Feeder (ARDF) to efficiently handle one- and two-sided originals for copying, scanning and faxing
- 3** Standard 2 x 550-sheet paper trays for longer, uninterrupted runs
- 4** Standard 100-sheet bypass tray accommodates a wide range of paper sizes and types
- 5** Optional 1 x 550-sheet paper tray, 2 x 550-sheet paper trays (shown) or 2,000-sheet large capacity tray for multiple paper sources on demand
- 6** Optional 1,200-sheet side LCT for even more productivity
- 7** A 500-sheet finisher, 1,000-sheet booklet finisher (shown), 1,000-sheet finisher and punch kits offer an entire range of finishing possibilities
- 8** 125-sheet one-bin tray to separate output and simplify document retrieval

General Specifications

Printing Process	4-Drum Method
Output Speed (Copy/Print)	MP C3002: 30-ppm BW & FC (LTR) MP C3502: 35-ppm BW & FC (LTR)
Warm-Up Time	MP C3002/C3502: 20 seconds
Recovery from Sleep Mode	MP C3002/C3502: 7.8 seconds
First Copy Time (FC/BW)	MP C3002/C3502: 7.3/4.8 seconds
Copy Resolution	600 dpi
Quantity Indicator	Up to 999 copies
Document Feeder	
Automatic Reversing Document Feeder (ARDF)	Original Capacity: 50 sheets Original Size: 5.5" x 8.5" - 11" x 17" (A5 - A3) Paper Weight: Simplex: 11 - 34 lb. Bond (40 - 128 g/m) Duplex: 14 - 28 lb. Bond (52 - 105 g/m)
Paper Capacity	Standard: 2 x 550 sheets + 100-sheet Bypass Tray, Maximum: 4,400 sheets (w/Tandem LCT + Side LCT)
Supported Paper Sizes	1st Paper Tray: 8.5" x 11" (A4) 2nd Paper Tray: 7.25" x 10.5" - 11" x 17", Envelopes (with option) (up to A3) Bypass: Up to 12" x 18", Envelopes (A3) Custom Sizes: Width: 3.5" - 12" (90 - 305 mm), Length: 5.8" - 23.6" (148 - 600 mm)
Supported Paper Weights	Standard Trays: 16 - 68 lb. Bond/140 lb. Index (52 - 256 g/m) Bypass Tray: 16 - 80 lb. Bond/110 lb. Cover (52 - 300 g/m) Duplex Unit: 16 - 45 lb. Bond/90 lb. Index (52 - 169 g/m)
Paper Types	Plain/recycled paper, laser printer qualified transparencies, labels, envelopes
Auto Duplex	Standard
Output Capacity	Standard (all): 500 sheets, Face Down Maximum: MP C3002/C3502: 1,625 sheets (w/1,000-sheet Finisher + 1 Bin Tray) 25% - 400% in 1% increments
Zoom	26.4" x 26.9" x 34.7" (670 x 682 x 880 mm) < 266 lb. (120 kg) w/ARDF
Dimensions (WxDxH)	120V - 127V, 60Hz
Weight	1,584W or less
Power Requirements	MP C3002: 1,435Wh
Power Consumption	MP C3502: 1,631Wh
TEC Value	

Printer Specifications (Standard)

CPU	Intel Celeron-M @ 600 MHz, Embedded
Memory	1.5 GB RAM Standard/190 GB HDD
Max. Print Speed	MP C3002: 30 ppm BW & FC MP C3502: 35 ppm BW & FC
Print Drivers	Standard: PCL 5c, PCL 6 (XL), XPS via download Optional: Postscript 3
Font Support	Standard: PCL: 45 Scalable, 6 Bitmapped + 13 International fonts Optional: PostScript 3: 136 Roman fonts, IPDS: 108 Roman fonts
Max. Print Resolution	1200 x 1200 dpi
Network Interfaces	Standard: 10BaseT/100Base-TX Ethernet (RJ-45), USB 2.0 Host Interface, USB 2.0 Hi Speed (for direct PC/Mac connection), Front USB 2.0/SD Card Slot Interface Optional: Gigabit Ethernet (1000Base-T) IEEE 802.11a/b/g Wireless Interface Bluetooth, IEEE 1284/ECP Parallel Interface
Network Protocol Support	TCP/IP (IPv4, IPv6), IPX/SPX*
Network/OS	Windows XP/Vista/7/Server 2003/Server 2008/Server 2008R2, Mac OS X 10.2 or later, Novell NetWare 6.5, Sun Solaris, HP-UX, SCO OpenServer, RedHat Linux, and IBM AIX, SAP R/3, IBM iSeries - AS/400 using OS/400 Host Print Transform
Utilities	Web SmartDeviceMonitor Web Image Monitor, @Remote™

Document Server Specifications (Standard)

Max. Stored Documents	3,000 documents
Max. Page Capacity	9,000 pages

Scanner Specifications (Standard)

Scanner Resolution	BW and FC scanning at 100 - 600 dpi, Up to 1200 dpi for TWAIN scanning
Scanning Speed	Default Scan Resolution: 200 dpi 200 dpi: 51 ipm (Letter-size) BW/FC; 300 dpi: 47ipm BW/41 ipm FC
Scan Area	11.7" x 17" (297 mm - 432 mm)
Compression Method	BW: TIFF (MH, MR, MMR, JBIG2) Grayscale/FC Color: JPEG
Supported File Formats	Single/Multi-Page TIFF, Single Page JPEG Single/Multi-Page PDF, High Compression PDF, PDF/A
Scan Modes	Scan-to-Email (with LDAP support) Scan-to-Folder (SMB/FTP/NCP*) Scan-to-URL Scan-to-Media (USB/SD Card) Network TWAIN Scanning

*Netware option is required

Facsimile Specifications (Optional)

Type	Fax Option Type C5502; Super G3
Resolution	200 x 100 dpi, 200 x 200 dpi, 400 x 400 dpi (with optional SAF memory)
Modem Speed	33.6K - 2,400 bps w/Auto Fallback
Compression Method	MH, MR, MMR, JBIG
Transmission Speed	G3: Approximately 2 seconds/page (JBIG)
Scanning Speed	49 ipm (Letter LEF)
Auto Dialing	2,000 Quick/Speed Dial numbers; 100 Group Dial numbers
Memory Capacity (SAF)	Standard: 4 MB (approx. 320 pages), Optional: 28 MB (approx. 2,240 pages) with optional SAF memory
Options	Additional G3 Lines (up to 2), Fax Connection Unit, Fax SAF Memory, Telephone Handset

Security Features (Standard)

DataOverwriteSecurity System (DOSS), HDD Encryption, User Codes, SNMP v3 Support, Encryption, Locked Print, User Authentication, 802.1x Wired Authentication, WPA/WPA2 (Wi-Fi Protect Access Support), Digitally Signed PDF, and more

Security Features (Optional)

Copy Data Security, DataOverwriteSecurity System (DOSS) with ISO 15408 Common Criteria Certification

Hardware Accessories

Paper Handling Options

Two-Tray Paper Bank (PB3130)*

Tray Capacity	1,100 sheets (550 sheets x 2 trays)
Paper Size	5.8" x 8.3" to 11" x 17" (A5 - A3)
Paper Weight	14 - 68 lb. Bond/140 lb. Index (52 - 256 g/m)
Dimensions (WxDxH)	22.8" x 24.4" x 10.2" (580 x 620 x 260 mm)

One-Tray Paper Bank (PB3120)*

Tray Capacity	550 sheets x 1 tray
Paper Size	5.8" x 8.3" to 11" x 17" (A5 - A3)
Paper Weight	14 - 68 lb. Bond/140 lb. Index (52 - 256 g/m)
Dimensions (WxDxH)	22.8" x 24.8" x 4.7" (580 x 629 x 120 mm)

Requires installation of Caster Table Type D

Tandem Large Capacity Tray (PB3140)*

Tray Capacity	2,000 sheets (1,000 sheets x 2)
Paper Size	8.5" x 11" (A4)
Paper Weight	14 - 68 lb. Bond/140 lb. Index (52 - 256 g/m)
Dimensions (WxDxH)	22.8" x 24.4" x 10.2" (580 x 620 x 260 mm)

Side Large Capacity Tray (RT3020)

Tray Capacity	1,200 sheets
Paper Size	8.5" x 11" (A4)
Paper Weight	16 - 57.5 lb. Bond/120 lb. Index (60 - 216 g/m)
Dimensions (WxDxH)	13.7" x 21.3" x 11.4" (348 x 540 x 290mm)

Requires Two-Tray Paper Bank (PB3130) or Tandem LCT (PB3140)

Output Trays & Finisher Options

Internal Shift-Sort Tray (SH3060)

Tray Capacity	250 sheets (8.5" x 11" or smaller) (A4 - A5) 125 sheets (8.5" x 14" or larger) (B4 - A3)
Paper Size	5.5" x 8.5" to 12" x 18" (A6 - A3)
Paper Weight	14 - 80 lb. Bond/110 lb. Cover (52 - 300 g/m)
Cannot be installed with any Finisher or Side Tray	

Side Tray Type C5502

Tray Capacity	250 sheets (8.5" x 11" or smaller) (A4 - A5) 125 sheets (8.5" x 14" or larger) (B4 - A3)
Paper Size	5.5" x 8.5" to 12" x 18" (A5 - A3)
Paper Weight	14 - 80 lb. Bond/165 lb. Index (52 - 300 g/m)
Dimensions (WxDxH)	30.7" x 16.2" x 5.4" (780 x 412 x 138 mm)
Cannot be installed with any Finisher or Internal Shift-Sort Tray	

500-sheet Finisher (SR3070)*

Paper Size	5.5" x 8.5" to 11" x 17" (A5 - A3)
Paper Weight	14 - 67 lb. Bond/140 lb. Index (52 - 253 g/m)
Stack Capacity	500 sheets (8.5" x 11" or smaller) 250 sheets (8.5" x 14" or larger)
Staple Paper Size	8.5" x 11" to 11" x 17" (A5 - A3)
Staple Paper Weight	14 - 67 lb. Bond (52 - 253 g/m)
Staple Capacity	50 sheets (8.5" x 11") 30 sheets (8.5" x 14" or larger, and/or Mixed Sizes)

Staple Positions
Dimensions (WxDxH)

1 staple: 4 positions; 2 staples: 1 position
19.4" x 26.1" x 18.1" (492 x 662 x 460 mm)

1,000-sheet Finisher (SR3090)*

Paper Size	Proof Tray: 5.5" x 8.5" to 12" x 18" (A6 - A3) Shift Tray: 5.5" x 8.5" to 12" x 18" (A6 - A3)
Paper Weight	Proof Tray: 14 - 69 lb. Bond/140 lb. Index (52 - 260 g/m) Shift Tray: 14 - 43 lb. Bond/90 lb. Index (52 - 163 g/m)
Stack Capacity	Proof Tray: 250 sheets (8.5" x 11") 50 sheets (8.5" x 14" or larger) Shift Tray: 1,000 sheets (8.5" x 11") 500 sheets (8.5" x 14" or larger)
Staple Capacity	50 sheets (8.5" x 11") 30 sheets (8.5" x 14" or larger)
Staple Paper Size	8.5" x 11" - 11" x 17" (A5 - A3)
Staple Paper Weight	17 - 24 lb. Bond (64 - 90 g/m)
Staple Positions	1 staple: 2 positions; 2 staples: 1 position
Dimensions (WxDxH)	10.7" x 20.5" x 31.2" (270 x 520 x 790 mm)

1,000-sheet Booklet Finisher (SR3100)*

Paper Size	Proof Tray: 5.5" x 8.5" to 12" x 18" (A6 - A3) Shift Tray: 5.5" x 8.5" to 12" x 18" (A6 - A3) Booklet Tray: 8.5" x 11", 8.5" x 14", 11" x 17" (A6 - A3)
Paper Weight	Proof Tray: 14 - 28 lb. Bond (52 - 105 g/m) Shift Tray: 14 - 68 lb. Bond/140 lb. Index (52 - 256 g/m)
Stack Capacity	Booklet Tray: 17 - 24 lb. Bond (64 - 90 g/m) Proof Tray: 100 sheets (8.5" x 11" or smaller) (A5 - A4) 50 sheets (8.5" x 14" or larger) (B4 - A3) Shift Tray: 1,000 sheets (8.5" x 11") (A4) 500 sheets (8.5" x 14" or larger) (B4 - A3) 100 sheets (5.5" x 8.5") (A5) Booklet Tray: 20 sets (2 - 5 sheets/set, all sizes, saddle-stitched) or 10 sets (6 - 10 sheets/set, all sizes, saddle-stitched)
Staple Capacity	Normal Staple: 50 sheets (8.5" x 11") (A4) 30 sheets (8.5" x 14" or larger) (B4 - A3) Saddle Stitch: 10 sheets (up to 40-page booklets)
Staple Paper Size	Normal Staple: 8.5" x 11" to 11" x 17" (A4 - A3) Saddle Stitch: 8.5" x 11" to 11" x 17" (A4, B4, A3) Staple Paper Weight: 17 - 24 lb. Bond (64 - 90 g/m)
Staple Positions	1 staple: 2 positions; 2 staples: 3 positions
Dimensions (WxDxH)	21.1" x 23.7" x 36.7" (535 x 600 x 930 mm)
2-/3-Hole Punch Unit	Optional; Installs inside Finisher Punch Paper Sizes: 5.5" x 8.5" to 11" x 17" Punch Paper Weight: 14 - 43 lb. Bond/90 lb. Index (52 - 163 g/m)

Additional Accessories

FAC 52 Cabinet Stand, Envelope Feeder, One Bin Tray, File Format Converter, Key Counter Bracket, Platen Cover, Card Reader Bracket, Counter Interface, Camera Direct Print Card, ADF Handle, IPDS Unit, HotSpot Printing Kit, Fiery™ Print Controller, Caster Table, Browser Unit, SD Card for Netware

Consumables

Item	Yield
Black Toner	28,000 pages
Cyan Toner	18,000 pages
Magenta Toner	18,000 pages
Yellow Toner	18,000 pages

*Either the Cabinet Stand or one of the paper options must be installed.
*Requires configuration with Bridge Unit.

