

# SAVIN®

## MP CW2201SP

### Wide Format Color Digital Imaging System

- ✓ Printer
- ✓ Copier
- Facsimile
- ✓ Scanner



MP CW2201SP

3.8  
ppm monochrome

MP CW2201SP

2.1  
ppm full-color

## Discover a smarter way to work and create in color

The AEC market is in the midst of rapid change. Project teams are looking for better ways to produce and share information. They're seeking technology that makes it easy to integrate Cloud-based solutions into workflows. And, as designs have gotten more and more sophisticated, so too has the level of detail people expect at every stage of planning and development. Powered by an innovative Smart Operation Panel and intuitive user interface, the new SAVIN® MP CW2201SP is a color, wide format system that provides a whole new way to get it done. It delivers the workstyle innovation needed for how, and where, business happens today — on the network, in the Cloud, on-the-go.

- Discover a wide format MFP that consolidates multiple devices into an all-in-one, space-saving system
- Experience a tablet-like 10.1" Smart Operation Panel designed for usability
- Deploy solutions that maximize efficiency across your organization
- Benefit from fast print speeds across multiple media types — up to 2.1 ppm for color and 3.8 ppm for black-and-white
- Print, copy and scan large-format technical documents, in vivid color or crisp black-and-white
- Leverage the latest advances in inkjet print technology to deliver fine details
- Empower mobile workers with the Smart Device Connector App



## Capture the quality and detail you demand, in every print

Enhanced wide format capabilities for today's CAD-centric environments

### All-in-one multifunction technology, in wide format

The Savin MP CW2201SP is a solution-ready MFP that delivers the everyday functions you need combined with the ability for seamless app integration so you can thrive in today's hyper-connected world. Designed for wide format workflows with low-volume, day-to-day needs, this solution brings the latest advancements within reach. It delivers a platform that can augment your existing workflows and completely improves upon how you create, store and share information. Instantly access up to 3000 files stored on the Document Server. With 4GB of RAM and a robust 320GB hard disk drive, users can efficiently print, copy, scan and distribute documents, all from a single wide format device.



### An intuitive, Smart Operation Panel that's simpler in every way

This all new 10.1" Smart Operation Panel eliminates all hardware keys, giving way to a touch-optimized, tablet-like experience. It adjusts freely from 0° to 55°, making it ergonomically friendly, and provides a large, full-color immersive display for easy viewing. Users benefit from the same user interface found on Savin's general office MFPs. This familiarity makes it easy to onboard a new solution so you can start production faster. Enjoy walk-up convenience with the ability to scan-to or print from a USB drive or SD card. And the new NFC card reader provides an easy-to-implement, cost-effective option for user authentication. More choices for tracking make these MFPs a perfect fit for clients who require detailed reporting.



### Do more with a customizable user interface

Personalize your experience on a fully redesigned user interface that delivers a whole new way to work. Experience customization features today's users want, including: short-cut icons, bookmarks, wallpapers, folder creation and widgets — in a simple layout. Workgroups will appreciate the familiarity of drop-down menus and the convenience of pinch-and-flick functionality. Streamline complex tasks with direct access to Cloud-based applications that expand system capability and can be integrated seamlessly. Access frequently used functions with new productivity enhancing apps. Meet virtually any workflow requirement. Be more productive.





# Innovative design features for innovative thinkers

The Savin MP CW2201SP was built with the user in mind. Enhanced with ergonomic features and design innovations, this system facilitates true operational convenience, improves productivity and boosts satisfaction.

A smart, clamshell design offers front access to the system and makes operating the system easier. Quickly change paper rolls and ink and retrieve output. No need to move things around to get to what you require. Also, a new manual paper cut feature ensures uninterrupted workflow should the document be impacted by temperature or humidity changes.

An LED lamp indicator keeps users aware that the system is in operation, and reduces the risk of someone opening the front cover unintentionally. Also, a durable paper basket is attached to the system to help keep things intact and organized. It is designed to neatly collect and stack maps, CAD drawings and posters or signage without causing system disruption.



## At every level of system design, there is a dedicated focus on technology and innovation

The Savin MP CW2201SP is a best-in-class solution for companies that focus on Geographic Information Systems, where detailed color-coded maps are produced everyday. It is also ideal for CAD-centered environments that create intricate design plans and schematics. This system delivers everything you want in a wide format MFP, all in a compact footprint.

To support today's mobile workforce, the Smart Device Connector App empowers users with the ability to connect to the system and perform a full range of multifunction capabilities directly from their Android and iOS based devices. This direct, one-to-one connection raises the bar on how information is accessed and shared.

- 1 Original Output Stacker:** Space-saving upper Original Output Stacker holds up to 50 D-size originals for convenient retrieval of copies and prints.
- 2 Control Panel:** 10.1" tiltable Smart Operation Panel delivers a touch-optimized, tablet-like user experience making walk-up operation easy and intuitive.
- 3 Color Scanner:** The built-in Color Scanner allows users to easily capture photos, fine lines and color markups with detailed accuracy. With the many scan-to functionalities (Email/Folder/FTP/URL/ Document Server/USB/SD Card) users streamline communication tasks and improve employee productivity.
- 4 Front Access Design:** The user friendly, clamshell design makes ink and paper roll replacement quick and easy.
- 5 Standard Roll Feeder:** The standard one roll unit supports multiple media stocks and types, including plain paper, recycled paper, coated paper and matte film.
- 6 Optional Roll Feeder:** The system can be configured with a second Roll Feeder providing users the flexibility to print on various sized paper without having to spend the time changing paper rolls manually.
- 7 USB/SD Card Option:** User can print from or scan-to a USB or SD Card directly from the control panel.
- 8 User Replaceable Ink:** The ink cartridge is easily accessible for a simple, clean, one-step replacement process.
- 9 Bypass Tray:** The Bypass Tray enables users to print on multiple paper sizes and weights meeting the various needs and demands of their workload.
- 10 Output Baskets:** Front Output Basket stacks up to 40 D-size oversized output allowing users to expand flexibility and high-volume capabilities.

To view detailed features of our wide format products online go to [www.savin.com/products](http://www.savin.com/products)



# Stand out and be outstanding

## Integrate color into your wide format workflow

Gain the added benefit of printing in color to ensure that your best ideas are seen in full detail. Produce drawings and designs as they were intended to be seen with up to 1200 x 1200 dpi print resolution and 600 x 600 dpi copy and scan resolutions. In fact, the system supports scanning in multiple sizes, giving you the power to achieve resolutions of up to 2400 dpi (TWAIN). Capture more opportunities with high quality output that upholds your reputation and exceeds expectations. Adjust color, contrast and density with ease. Use the image preview function to ensure accuracy and avoid wasted output.



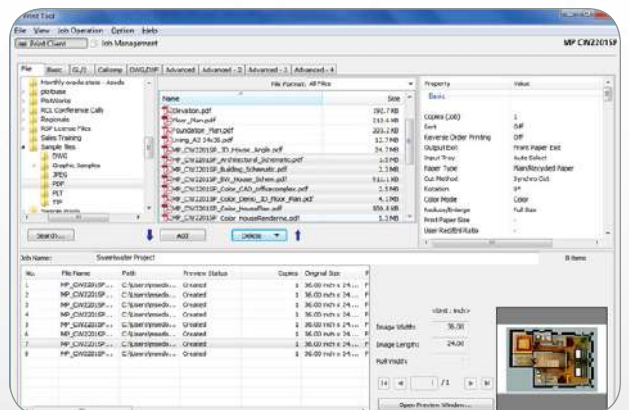
## Next-gen inkjet technology and high quality images now

Achieve precise color output with less spread and zero smudge, thanks to intelligent ink technology and dual print heads. Savin's new pigment-based ink technology embeds color pigment between the paper fibers, delivering superior results in a number of wide format applications. New ink formulas are less viscous, ensuring smooth flow to the print heads. Bi-directional ink pumps improve overall ink yields. And fast drying ink with minimal dot spread is key to achieving optimum image quality on every job. Also, a new ink save mode dramatically reduces ink consumption, delivering unexpected cost savings.



## Create smarter connections

Despite the large size of most files, CAD environments maintain a pressing need to share and distribute those files within the network. A standard 10/100/1000Base-TX Gigabit Ethernet interface enables faster throughput and transfer between multi-user workgroups — at up to 1000 megabits per second. Seamless data transfer from a PC to the wide format MFP via a USB 2.0 cable further accelerates the speed of business. Additionally, our optional PrintCopy Tool software allows users to print and edit any file regardless of whether they possess the original software application used to create the file.



# Wide format innovation balanced with practical controls

## Create, securely

Go forward with confidence knowing you have advanced security features protecting your most valuable assets. Standard HDD Encryption, a DataOverwriteSecurity System (DOSS), Unauthorized Copy Control and Password-Protected PDF close data security loopholes and help safeguard against network threats. Advanced authentication controls ensure that only authorized users have access to the system. IT Administration can even restrict access to specific functions (by individual user) and set volume limits. A User Lockout function prevents users from making multiple login attempts.



## Improve productivity and collaboration

On the MP CW2201SP, a built-in color scanner and powerful scan-to functionalities reduce your need to carry physical blue prints to a job site. The system allows you to Scan-to-Email/Folder/FTP/URL/HDD (Document Server), right from the control panel. Get your files where they need to be, when they need to be there. And convenient USB/SD card slots allow you to take your projects with you and achieve true document mobility. Also, in a situation where color ink unintentionally runs out, the intuitive Emergency Print feature ensures that you still receive your completed printed documents by automatically switching to precise black-and-white.



## Keep costs in line and the office green

Consolidating wide format functions into a single, solution-ready multifunction platform allows you to reduce outsourcing and capital expenditures, conserve valuable office space, and achieve a lower Total Cost of Ownership. Eco-friendly features such as Low Power Mode and Sleep Mode keep energy consumption down. In addition, the ability to print multi-page documents on a single sheet helps reduce paper consumption. The system is ENERGY STAR® certified, furthering your company's ongoing sustainability efforts. Plus, the device meets EPEAT® Gold criteria\* — a global environmental rating system for electronic products.



\*EPEAT Gold rating is applicable only in the USA.

# Savin MP CW2201SP

## SYSTEM SPECIFICATIONS



### General Specifications

|                                     |  |
|-------------------------------------|--|
| Configuration                       | Console  |
| Scanning Element                    | CIS Color Scanner (Moving original)  |
| Printing Process                    | On-demand Piezo Inkjet System (pigment-based ink)  |
| Ink Type                            | Pigment-based ink (All 4 colors)   |
| System Memory                       | 4 GB   |
| HDD Capacity                        | 320 GB   |
| Warm-Up Time                        | Less than 40 Seconds   |
| First Copy Time (from Standby Mode) | A0 SEF:<br>(B&W) High Speed Copy: 51 sec.; Standard: 71 sec.<br>(Full-Color) High Speed Copy: 81 sec.; Standard: 155 sec.<br>A1 LEF:<br>(B&W) High Speed Copy: 29 sec.; Standard: 41 sec.<br>(Full-Color) High Speed Copy: 53 sec.; Standard: 84 sec.              |
| Copy Resolution                     | 600 dpi  |
| Original Feed                       | Sheet  |
| Original Set Position               | Center   |
| Original Scan Size                  | Maximum: 36" x 590" (914 – 15,000 mm)<br>Minimum: 8.5" x 8.5" (210 – 210 mm)   |
| Original Paper Weight               | Paper Feed Guarantee: 0.035 – 1.0 mm<br>Image Quality Guarantee: 0.090 – 0.2 mm (64–190 gsm)   |
| Original Paper Width                | Inches: 8.5" / 9" / 11" / 12" / 17" / 18" / 22" / 24" / 30" / 34" / 36"<br>Metric (mm): 210 / 257 / 297 / 364 / 420 / 440 / 490 / 515 / 594 / 610 / 620 / 625 / 660 / 680 / 707 / 728 / 800 / 841 / 880 / 914.4  |
| Output Paper Size                   | Inches: Maximum Roll Feeder – Width: 36", Length: 590"<br>Maximum Bypass – Width 36", Length: 78.7"<br>Minimum – Width 11", Length: 8.27"<br>Metric: Maximum Roll Feeder – Width: 914.4 mm, Length: 15,000 mm<br>Maximum Bypass – Width 914.4 mm, Length: 2,000 mm |
| Output Paper Weight                 | Roll Paper: 0.068-0.2 mm (51–200 g/m <sup>2</sup> )<br>Cut Sheet: 0.068-0.4 mm (51–220 g/m <sup>2</sup> )  |
| Roll Paper Width                    | Inches: 11" / 12" / 13.5" / 15" / 17" / 18" / 22" / 24" / 30" / 34" / 36"<br>Metric (mm): 297 / 364 / 420 / 440 / 490 / 515 / 594 / 610 / 620 / 625 / 660 / 680 / 707 / 728 / 800/ 841 / 880/ 914.4  |
| Copying Speed                       | A1, LEF:<br>(B&W) High Speed Copy: 3.8 cpm;<br>Standard: 2.0 cpm<br>(Full-Color) High Speed Copy: 2.1 cpm;<br>Standard: 1.2 cpm<br>A0, SEF:<br>(B&W) High Speed Copy: 1.9 cpm;<br>Standard: 1.1 cpm<br>(Full-Color) High Speed Copy: 1.1 cpm;<br>Standard: 0.6 cpm |

|                        |   |
|------------------------|---|
| Reproduction Ratio     | Metric: 25%, 35.4%, 50%, 70.7%, 141.4%, 200%, 282.8%, 400%<br>Engineer (inch): 25%, 33.3%, 50%, 64.7%, 129.4%, 200%, 258.8%, 400%<br>Architecture: 25%, 33.3%, 50%, 66.7%, 133.3%, 200%, 266.7%, 400% |
| Zoom                   | 25% to 400% (1% increments)   |
| Multiple Copies        | 1 to 99   |
| Paper Feeding Capacity | 1st Roll and Optional 2nd Roll, One Roll Paper each, Width: 8.5" – 36" (279.4–914 mm), Maximum Length: 5,905" / 492 (150,000 mm), Maximum Diameter: 6.7" (176 mm), Bypass: One Sheet                  |
| Paper Output Capacity  | 10 Sheets (Plain paper)<br>2" core roll cannot stack due to small curvature factor.   |
| Cutting Method         | Preset Size Cut, Synchronized Cut, Variable Cut   |
| Power Source           | 120 – 127V, 15A   |
| Max Power Consumption  | Less than 180 W   |
| Dimensions (WxDxH)     | 54.5" x 26.6" x 48" (1,384 x 675 x 1,219 mm)  |
| Weight                 | 265 lbs. (120 kg)   |

### Printer Specifications

|                                 |  |
|---------------------------------|--|
| Controller Board                | Embedded   |
| CPU                             | Celeron-M 1.0 GHz  |
| RAM                             | 4GB  |
| HDD                             | 320 GB   |
| Print Speed                     | A1 LEF:<br>(B&W) – 3.8 ppm<br>(Full-Color) – 2.1 ppm<br>A0 SEF:<br>(B&W) – 1.9 ppm<br>(Full-Color) – 1.1 ppm   |
| Print Drivers                   | Adobe® PostScript®3, HDI   |
| Supported File Formats          | Post Script 3, HP-GL, HP-GL2   |
| Print Resolution                | Speed Priority (Drawing): 600 x 300 dpi<br>Standard: 600 x 600 dpi<br>Quality Priority: 600 x 600 dpi<br>Quality Priority Mode for only Coated Paper, Film (Matted) and Special paper, 1200 x 1200 dpi |
| Font                            | European 136 fonts   |
| Ink Save Mode                   | Yes Save Ratio 50%   |
| Interface                       | Standard: 10/100/1000BaseTX, USB 2.0, USB Host<br>Optional: Wireless LAN IEEE802.11 a/g/n  |
| Network Protocol                | TCP/IP (IP v4, IP v6)  |
| Standard MIB                    | MIB-II (RFC1213), Host Resource (RFC1514), Printer MIB (RFC1759)   |
| Private MIB                     | Savin Original   |
| Supported CAD Version           | HDI AutoCAD 2007 – 2016  |
| One Direction                   | Yes  |
| Media to Print (Print from USB) | Yes (JPEG/TIFF/PDF)  |
| Unauthorized Copy Prevention    | Yes (PS Driver)  |
| WSD Printer                     | Yes  |
| Color Matching                  | Yes  |
| POP                             | Yes  |
| CUD                             | Yes  |

### Scanner Specifications

|                         |  |
|-------------------------|--|
| Color Scan              | Standard   |
| Scan-to-Multimedia      | Standard   |
| Media-to-Print          | Standard   |
| Scan Speed              | B&W: 600 dpi 80 mm/s or 3.14 ips,<br>200 dpi 160 mm/s or 6.3 ips<br>Full-Color: 600 dpi 26.7 mm/s or 1.05 ips<br>200 dpi 40 mm/s or 1.57                       |
| Scan Resolution         | Up to 600 dpi; TWIN: Up to 2400 dpi  |
| Scan Detection          | Auto Detect, Preset Size, Custom Size  |
| RGB Support             | Standard   |
| Network Interface       | Standard: 10/100/1000BaseTX, USB 2.0, USB Host<br>Optional: Wireless LAN IEEE802.11a/g/n<br>Network: TCP/IP<br>Scan-to Email: SMTP<br>Scan-to Folder: SMB, FTP |
| Protocol                | B&W: MH, MR, MMR, JBIG2* (Default: MMR)<br>Full-Color: JPEG (5 levels)   |
| Compression Method      |  |
| * PDF format only       |  |
| Scan Mode               | Monochrome: Text/Line Art (Default), Text<br>Text/Phot, Grayscale<br>Full-Color: Text/Photo, Photo   |
| Image Density           | Auto Density Selection (effective only in B&W and Grayscale Scan Mode) Manual: 7 levels (effective in B&W/Grayscale and Full-Color Scan Mode)                  |
| Image Rotation          | Yes  |
| SADF/Batch Mode         | No   |
| Mixed Size Mode         | Yes  |
| External Options        |  |
| 2nd Roll Unit           |  |
| Roll Paper Size         | Maximum Width: 36" (914 mm)<br>Minimum Width: 11" (279.4 mm)   |
| Roll Paper Diameter     | 6.92" (176 mm)   |
| Dimensions              | 43.6" x 15.7" x 17" (1,108 x 398 x 432 mm)   |
| Weight                  | 31.9 lb. (14.5 kg)   |
| Roll Holder Unit        |  |
| Dimensions              | 43.6" x 15.7" x 17" (1,049 x 160 x 160 mm)   |
| Weight                  | 3.3 lb. (1.5 Kg)   |
| Consumables             |  |
| Starter Ink (Included)  |  |
| Print Cartridge Black   | 60 ml  |
| Print Cartridge Cyan    | 28 ml  |
| Print Cartridge Magenta | 56 ml  |
| Print Cartridge Yellow  | 56 ml  |
| For Purchase            |  |
| Print Cartridge Black   | 200 ml   |
| Print Cartridge Cyan    | 100 ml   |
| Print Cartridge Magenta | 100 ml   |
| Print Cartridge Yellow  | 100 ml   |

For maximum performance and yield, we recommend using genuine Savin parts and supplies.