

SAVIN[®]

Pro C900
Color Production System

PRODUCTIVE > EFFICIENT > QUALITY > RELIABLE > REVENUE >



Increase your color capacity, take on more jobs and keep costs low.



Capture more profitable color opportunities.

Faster turnaround for last-minute jobs. Higher throughput during peak production. Greater flexibility for inline finishing. Lower operating costs for full-color applications. Any one of these can help grow your business. That's why we engineered the SAVIN® Pro C900 to deliver all this and much more. Equipped to produce an incredible variety of color documents, this versatile digital color production system empowers you to take on new kinds of jobs, finish them faster and keep your customers coming back for more. It offers unprecedented speed for its class, a fail-safe design that maximizes uptime and user-friendly features that keep productivity high. The SAVIN Pro C900 also provides exceptional color quality, extensive finishing options and complete, end-to-end workflow solutions.



Set up complex jobs in seconds with the Super VGA Color Touch Panel Display.

Combine these essentials with the service and support network of Savin, a trusted global brand, and the result is a truly impressive digital color production system that opens up a whole new world of opportunities for light production environments.

Increase Productivity, Grow Revenue

Whether you want to add full-color capacity, offload work from other systems or migrate select jobs to more cost-effective technology, the SAVIN Pro C900 provides the speed and productivity you need to generate more revenue.

- Deliver every document faster with a 90 page-per-minute print engine. Compared to an 80 page-per-minute device, this engine yields 24,000 more color pages every week.
- Never let your choice of media hinder productivity. The SAVIN Pro C900 handles heavy media weights — up to 110 lb. Cover through the 13" x 19.2" Large Capacity Tray — without slowing down, so you can reduce turnaround time for direct mail, Variable Data Printing (VDP) and other applications that require heavier media.
- Replace Toner Bottles, reload and auto-link Media Trays without stopping jobs in progress, enabling long, unattended print runs. Toner yield is unprecedented at 72,000 prints per bottle.

- Access the advanced print controller and program tasks quickly through the user-friendly, easy-to-read, 10.4-inch color touch-screen display.

Consistent, Repeatable Quality

In any operation, the SAVIN Pro C900 can quickly become the go-to system for consistent, high-quality color output. Its innovative design is geared to provide steady, reliable results on a wide variety of media, even in demanding light production environments.

- Impress your customers with outstanding 1200 x 1200 dpi image quality. By matching the resolution of higher-volume systems, the SAVIN Pro C900 lets you redirect short-run color jobs to a more affordable alternative.
- Minimize density reduction in high color coverage areas with a stabilizing, single-direction development method.
- Enhance image quality in high-density areas with the newly formulated developer.

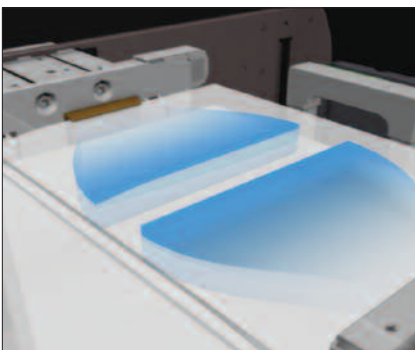
- Take advantage of more consistent color quality from print-to-print and throughout long print runs with innovative sensors that adjust and compensate for minor color shifts in the imaging process.

Broad Range of Media

Integrate the SAVIN Pro C900 into your printing environment and instantly expand the types of jobs you can divert to this short-run digital color production system.

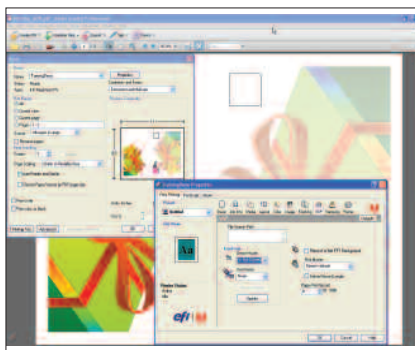
- Run a wide variety of conventional and specialty stocks in sizes up to 13" x 19.2", so you can take on more jobs regardless of media requirements.
- Reduce operator intervention during complex jobs. Print drivers support advanced page programming for mixed media, so you can automate the selection of various stocks during job preparation and submission.

Air-Assist Media Feed



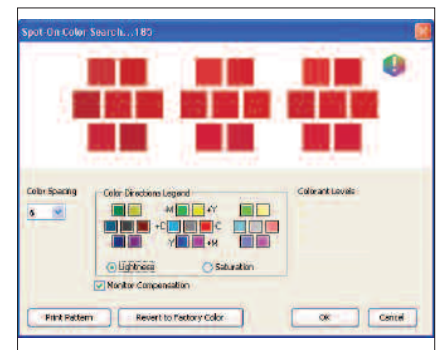
The Air-Assist Media Feed Mechanism blows air between individual sheets to counteract static cling and eliminate multi-feeds, making it easy for you to run more jobs that require coated media.

Variable Data Printing



The SAVIN Pro C900 is perfect for Variable Data Printing, an application that is surging in popularity and can help you attract new customers.

Color Management



Intelligent Color Management allows you to adjust color output to suit a variety of application-specific needs.

Pro C900 Color Production System

PRODUCTIVE > EFFICIENT > QUALITY > RELIABLE > REVENUE >

GB5000 Perfect Binder*



Expand your repertoire to include inline perfect-bound books from 10 to 200 pages (400 pages in Duplex mode). This finisher automatically trims collated pages (three sides or one side) and applies the perfect binding without operator intervention—so you can reduce labor costs.

GBC StreamPunch™ III*



This interchangeable die punch unit rapidly produces punched documents in a variety of binding styles—without labor-intensive manual punch operations. Inline punching eliminates additional production steps, saving time and eliminating costly errors.

RB5000 Ring Binder*



The Ring Binder automates the entire binding process, so operators can prepare incoming jobs while additional jobs are being ring-bound. So, you can improve productivity and reduce the risk of bottlenecks. Choose two ring sizes for documents up to 50 or 100 sheets.

*Please contact your SAVIN Pro C900 Sales Representative for availability.

Flexible Inline Finishing

Accommodate more specialty jobs and complete them more efficiently. Look to Savin to help you select the right options for your specific job requirements.

- Configure a complete end-to-end document finishing solution that aligns perfectly with your volume, applications, workflow and budget.
- Shorten turnaround time and save money. Multiple finishing options allow you to process various types of complex jobs without taking them offline for time-consuming manual finishing.

Integrated Workflow Tools

The SAVIN Pro C900 comes with a complete line of integrated workflow support solutions that establish unparalleled end-to-end control over digital file processing at every stage of production.

- Create a smooth, uninterrupted and completely transparent process that covers Web-to-print submission, ticketing, acceptance, pre-flight, make-ready, print production, job management, finishing, archiving/retrieval and accounting.
- Save time and streamline production with EFI™ Hot Folders. Operators simply drag a file into the folder and it is processed automatically according to preset instructions, with no intervention.
- Capitalize on the emergence of Variable Data Printing (VDP). Add more value to documents and drive volume of customized output by implementing open architecture and flexible VDP solutions.
- Use advanced profile creation tools to ensure color matching across a wide range of input and output devices.
- Leverage the smartest, most effective workflow tools and streamline every aspect of your production environment, through Savin's partnerships with proven industry-leading technology innovators. These partners enable Savin to coexist seamlessly within current production environments.

Your Environmental Partner

Savin continues its long-standing commitment to developing office solutions with environmentally friendly and superior energy- and supply-saving features, without compromising productivity, including:

- Duplex Modes
- Minimal Ozone Emissions
- Low Noise Levels
- Restriction of Hazardous Substances (RoHS) Compliant



Take a Closer Look at the SAVIN Pro C900

No matter what kind of production you specialize in, maximum uptime and reliability are essential. Savin designed the Pro C900 with these expectations in mind. It also provides the options you need to effectively bridge the gap between digital and offset printing, and improve resource sharing.

Intuitive Operation Panel

Use the clear, easy-to-read Operation Panel to gain direct access to the Job Queue and other advanced functions of the system's EFI™ Fiery® print controller.

Trained Customer Replaceable Units

Trained Customer Replaceable Units (TCRUs) enable trained operators to replace key hardware components quickly, to maximize uptime.

Easy Toner Replacement

Replace toner on the fly with ease. Simply load a Toner Bottle into the loading slot, and slide the bottle in.

Status Light

Check the system at-a-glance with the status indicator light.

Vast Media Capacity

Load the system once and run for hours without interruption. With all options, the system holds up to 11,000 sheets and handles output up to 13,000 sheets.



Heavy Media Support

The SAVIN Pro C900 can handle heavy media at its full rated speed of 90 pages-per-minute.

@Remote™

Ensure accurate, timely meter reads and billing. The Savin @Remote™ service solution automatically collects device data and reports media and toner alerts.

EFI™ Fiery® Print Controller

Establish end-to-end control over digital file processing at every stage of production with integrated workflow utilities from EFI™ Fiery®.

Versatile Finishing Options

The RB5000 Ring Binder and SR5000 3,000 Sheet Finishers are just some of the numerous options you can use to help operators complete more jobs inline and reduce the need for manual finishing.

High-Capacity Stacker (not shown)

Leverage your current investment in offline finishing with the optional SK5000 High-Capacity Stacker, which holds up to 5,000 sheets. Add up to two units with a roll-away cart to easily transport 10,000 sheets of neatly stacked output for inline finishing, packing and distribution.

Large Capacity Tray*

With two drawers that each hold up to 2,000 sheets, including sizes up to 13" x 19.2", the RT5020 Large Capacity Tray allows you to reproduce full-bleed 11" x 17" documents while preserving crop marks and borders.

*A total of two 13" x 19.2" LCTs can be added for a total of 4,000 sheets.

MAIN UNIT

Main Unit Base Configuration	Pro C900 Base Unit includes Plotting Engine, EFI Fiery Print Controller, 2 x 1,000-Sheet Tandem Tray, 1 x 500-Sheet Tray and 10.4" Operation Panel
Printing Process	Dry electrostatic transfer with internal transfer belt; 4-drum method
Maximum Print Resolution	1200 dpi
Output Speed	8.5" x 11": 90 pages-per-minute in B&W and full-color
Warm-Up Time	Less than 420 seconds
Optional Input Trays	
RT5000 Letter Large Capacity Tray	Tray 1: 1,000 sheets Tray 2: 1,000 sheets Tray 3: 2,550 sheets Total: 4,550 sheets
RT5020 Large Capacity Tray	13" x 19.2" Large Capacity Tray: 2 x 2,000-Sheet Trays Total: 4,000 sheets
BY5000 Multi-Bypass Tray	500-Sheet Multi-Bypass Tray Unit: Total: 500 sheets
Maximum Input Capacity	11,000 sheets (fully configured)
Optional Output Stacking Devices	
SR5000 Finisher	3,000 sheets (100-sheet stapling)
SK5000 High-Capacity Stacker	5,000 sheets (up to two units can be added; roll-away media cart included)
Maximum Output Media Capacity	13,000 sheets (fully configured)
Media Size (Standard Input Trays)	Tray 1: 8.5" x 11" (tandem), 11" x 17" with optional Tandem Tray Converter Tray 2: 5.5" x 8.5" - 13" x 18"
Media Weight (Standard Input Trays)	Tray 1: 16 lb. Bond - 80 lb. Cover Tray 2: 16 lb. Bond - 80 lb. Cover
Dimensions (WxDxH)	49.2" x 43.3" x 56.7"
Weight	1,543.2 lbs. (700 kg) or less
Power Requirements	240V, 24A
Maximum Power Consumption	Less than 5,500W

EFI™ FIERY® PRINT CONTROLLER SPECIFICATIONS (STANDARD)

CPU	Intel Core Duo 2.16 GHz
Memory	2 GB
Hard Disk Drive	500 GB (250 GB x 2)
Operating System	Windows XP
Fiery System Version	Fiery System 8.0 Release 2
Page Description Languages	PCL5c, PCL6, Genuine Adobe® PostScript® 3™
Network Interface	Ethernet 1000/100/10BaseT
Network Protocols	TCP/IP (IPv4, IPv6), Apple Talk, SMB
Client Operating System Support	Windows 2000/2003/XP/Vista Mac OS/X v10.3.9 or later
Standard Utilities	
Print Submission & Management	EFI Driver, EFI Command WorkStation (PC & Mac), Fiery WebTools, EFI Hot Folders, EFI Virtual Printer, Macintosh Print Center Plug-Ins, Rush Printing, Print/Process Next, Advanced Job Re-Order, Suspend On Mismatch, Quick Doc Merge, Schedule Print
Color Management & Proofing	EFI Fiery ColorWise, Fiery Graphic Arts Package

Imposition & Document Assembly	Mixed Media, Paper Catalogue, Tab Shift, Insert Tab, Booklet Maker, EFI Impose, Fiery Edition
Variable Data Printing	PPML, EFI Fiery FreeForm, Fiery VDP Resource Manager, Creo VPS
Additional Utilities	Web Image Monitor, Savin @Remote
Optional Utilities	
Color Management & Proofing	Fiery Graphic Arts Package Premium Edition, EFI Color Profiler Suite V2.2
Imposition & Document Assembly	EFI Compose Fiery Edition
Color Measurement	ES-1000 Color Spectrophotometer

SECURITY SPECIFICATIONS

SMTP v3 Authentication, POP before SMTP, PDF Encryption, User Codes

OPTIONAL INPUT AND FINISHING ACCESSORIES

RT5000 Letter Large Capacity Tray	
Media Capacity	Tray 1: 1,000 sheets Tray 2: 1,000 sheets Tray 3: 2,550 sheets Up to 8.5" x 11"
Media Size	Up to 8.5" x 11"
Media Weight	Top Two Trays: 16 lb. Bond - 80 lb. Cover Bottom Tray: 16 lb. Bond - 60 lb. Cover
LCIT RT5020 13" x 19.2" Large Capacity Tray*	
Media Capacity	2 x 2,000-Sheet Trays
Media Size	5.5" x 8.5" - 13" x 19.2"
Media Weight	16 lb. Bond - 110 lb. Cover
*For tandem connection, Bridge Unit BU5000 is required for 13" x 19.2" Large Capacity Tray. Up to two units can be connected.	
BY5000 500-Sheet Multi-Bypass Tray Unit	
Media Capacity	500 sheets
Media Size	5.5" x 8.5" - 13" x 19.2"
Media Weight	16 lb. Bond - 80 lb. Cover/120 lb. Index
CI5010 2-Tray Cover Interposer	
Stack Capacity	2 x 200-Sheet Trays
Media Size	5.5" x 8.5" - 13" x 19.2"
Media Weight	17 lb. Bond - 80 lb. Cover
SR5000 3,000 Sheet Finisher/Stapler	
Media Size	5.5" x 8.5" - 11" x 17"; Up to 13" x 19.2"
Media Weight	Proof Tray: 16 lb. Bond - 80 lb. Cover Shift Tray: 16 lb. Bond - 110 lb. Cover
Stack Capacity	Proof Tray: 500 sheets (8.5" x 11" or smaller) Shift Tray: 3,000 sheets (8.5" x 11" or smaller)
Staple Capacity	100 sheets: 8.5" x 11" 50 sheets: 8.5" x 14" or smaller Z-Fold: 10 sheets
Staple Positions	Top, Bottom, 2 Staples, Top-Slant
Finisher Accessories	Hole Punch Unit (2 or 3 holes)
BK5000 Saddle Stitch Unit	
Media Size	Without Z-Fold: 5.5" x 8.5" - 12" x 18"; Up to 13" x 19.2" With Z-Fold: 8.5" x 11", 8.5" x 14", 11" x 17"
Media Weight	16 lb. Bond - 110 lb. Cover
Staple Capacity	15 sheets (20 lb. Bond)
Stack Capacity After Saddle Stitch	30 sets

GB5000 Perfect Bind Unit

Booklet Size	Width: 7.81" x 11.69" Length: 5.5" x 8.5"
Media Weight Capacity	24 lb. Bond - 110 lb. Cover 10 - 200 sheets (400 pages in Duplex mode)
Stack Capacity	7 sets (100 sheets per set)
Cover Interposer Tray	2 x 200-Sheet Trays
Type GB5000	
Transit Pass Unit	For perfect bind*
Type GB5000	

*Transit Pass Unit Type GB5000 is required.

ZF4000 Z-Fold Unit

With Shift Tray and Proof Tray	Media Size: 8.5" x 11", 8.5" x 14", 11" x 17" SEF Stack Weight: 17 - 20 lb. Bond Media Size: 11" x 17"
With Staple Tray	Stack Weight: 17 - 20 lb. Bond

BK5010 Production Level Booklet Maker*

Maximum Booklet Capacity	30 sheets (120 pages)
Finishing Speed	Maintains rated engine speed of 90 ppm
Supported Media Size	Width: 8.1" - 12.6" Length: 10.8" - 18"
Supported Media Weight	16 lb. Bond - 172 lb. Index**
Optional Accessories	TR5010 for face trimming BF5010 for square book folding CF5010 for cover feeding/interposing/Rail Kit

*Manufactured by Plockmatic International AB.

**Booklet Maker supports up to 172 lb. Index in offline mode only. The Pro C900 supports up to 80 lb. Cover online when combined with the Booklet Maker.

GBC StreamPunch™ III Finisher

Punch Type	Customer-replaceable die sets (7)
Supported Media Size	8.5" x 11" LEF (11" side only)

RB5000 Ring Bind Unit

Media Size	8.5" x 11"
Media Weight	16 lb. Bond - 80 lb. Cover
Bind Capacity	2 - 100 sheets
Stack Capacity	Binding Mode: 11 sets (100 pages per set) Punching Mode: 50 sets
Ring (Consumables)	Ring Bind Element for 50 sheets Ring Bind Element for 100 sheets
Ring Opener	Type A

SK5000 High-Capacity Stacker*

Media Sizes	5.5" x 8.5" - 11" x 17"; Up to 13" x 19.2"
Media Weight	16 lb. Bond - 110 lb. Cover
Stack Capacity	5,000 sheets
Roll-Away Cart	Type 5000

*Up to two units can be connected.

ADDITIONAL ACCESSORIES

Tab Sheet Unit, 11" x 17" Tandem Tray Converter, Optional Counter Interface Unit Type A

CONSUMABLES

Cyan, Magenta, Yellow, 72,000 pages yield per bottle Black Toner*

*Yields based on 5% coverage.

For maximum performance and yield, we recommend using genuine Savin parts and supplies.

Bringing Savin Value to Your Organization

Savin technology offers a diverse portfolio of solutions to help your organization stay competitive and move ahead. Let Savin show you how to empower your business to improve critical processes, keep information secure, ensure compliance and promote environmental sustainability while reducing the total cost of ownership.

♻️ Printed in U.S.A. on recycled paper.