

# SHARP®

## WORKGROUP COLOR DOCUMENT SYSTEMS



**MX-2616N**  
**MX-3116N**

A full color ledger-size document system that helps with all of your business needs.

## MX-2616N/MX-3116N: FEATURE-RICH AND A STRONG VALUE

Sharp's new MX-2616N/3116N—with all the essential copy, print, color network scan functions and convenient fax option – is an attractive, user-friendly addition to any workplace. To move your business forward, these full-color A3 MFPs from Sharp are the smart choice. Sharp's new MX-2616N/3116N full-color multifunction document systems have been meticulously engineered to help businesses maximize their document workflow efficiency while providing outstanding image quality and performance.

### Key Features:

- Multi-processor design with Standard PCL® 6 Printing System produces brilliant, high-quality color documents as well as razor-sharp monochrome documents at speeds of 26/31 ppm
- Available 500 + 2,000-sheet Tandem Paper Drawer fits within the standard footprint of the MFP, offering higher paper capacity without sacrificing valuable office space
- Standard 100-sheet Reversing Single Pass Document Feeder scans up to 50 originals per minute, helping to maximize productivity

With Sharp's powerful multi-tasking controller, the MX-2616N/3116N can help save time and money producing professional color documents in-house with breathtaking image quality in a value-packed system. Sharp's advanced device management and Remote Front Panel feature makes it easy to control color usage and costs. That's the SHARP DIFFERENCE.



**FEATURE-RICH:**

**STANDARD NETWORKING,  
COLOR PRINT, COPY AND  
COLOR SCAN PRODUCING  
HIGH-QUALITY COLOR  
DOCUMENTS**

**COMPACT CONFIGURATION  
WITH OPTIONAL HIGH-  
CAPACITY TANDEM PAPER  
DRAWER**

**Advanced features plus multi-function capabilities  
allow you to meet tomorrow's document needs today.**

- **True multi-tasking** full color document system
- **High-resolution 7" (diagonal) touch-screen** color display with graphical navigation
- Standard **PCL®6 compatible printing system** with **available PostScript®3 compatible and XPS options\***
- **600 x 600 dpi** printing provides clear, crisp image output
- Advanced **ImageSEND™** function scans documents to USB devices, network folders, E-mail and more
- ImageSEND function scans documents at up to **50 images per minute** in both black and color
- Convenient **Document Filing System** with **thumbnail view** and **image preview** features
- Available **500 + 2,000 sheet tandem paper drawer**, for an online **capacity of 3,100 sheets\***



**STANDARD SECURITY WITH  
DATA OVERWRITE AND  
SHARP'S END-OF-LEASE  
FEATURE**

- **Flexible paper handling** system feeds up to 80 lb. cover through paper trays and up to 110 lb. cover through the bypass tray
- **Super G3 fax** option with intelligent inbound routing\*
- Supports Sharp's **award-winning** security platform with **standard 256-bit data encryption** and up to **7 times data overwrite protection**
- Convenient **end-of-lease feature** overwrites all job data, user data and network information at trade-in time
- **Remote front panel feature** allows users and administrators to view and control machine operations from a PC workstation
- **Environmentally-friendly design** offers low power consumption, fast warm up, compact design and long-life parts and supplies

*\*Some features require optional equipment and/or software.*



## INTUITIVE FEATURES HELP BUSINESSES SOAR TO NEW HEIGHTS



High-resolution touch screen with Stylus pen for easy point-and-touch operation



Available paper capacity stores up to a maximum of 3,100 sheets with options



Sharp's easy-to-use Document Filing System with thumbnail preview

### Sharp's MX-2616N/MX-3116N will help elevate workgroup performance and meet on-the-go business demands.

#### The Flexibility and Performance You Need

With a **high-resolution touch screen color display** and a powerful **multi-tasking controller**, the MX-2616N/MX-3116N color workgroup document system can help elevate your office productivity to the next level. The intuitive menu navigation system with razor sharp graphics makes operating the MX-2616N/MX-3116N simple and easy. With Sharp's true multi-tasking controller, complex color print jobs can be processed quickly, even while documents are being scanned. But that's just the beginning – with a standard **100-sheet reversing document feeder**, automatic duplexing, electronic sorting and integrated offset stacking, you'll complete even large jobs in a snap.

#### High-Quality Output You Can Rely On

The MX-2616N/MX-3116N color workgroup document system combines enhanced second-generation micro-fine toner technology with **600 x 600 dpi** print resolution to produce documents with crisp, clear images and dazzling high-quality colors.

#### Professional Performance Your Business Can Depend On

Sharp's MX-2616N/MX-3116N color workgroup document system delivers professional performance and optimal productivity to satisfy your daily production needs. Copy/print **speeds up to 31 ppm** (in both color or B&W) help you to meet project deadlines with time to spare. The flexible paper handling system can feed up to 80 lb cover stock through the paper trays and up to 110 lb cover through the bypass tray. With available on-line paper capacity of up to 3,100 sheets, the MX-2616N/MX-3116N is ready when you are.

#### Innovative Document Filing For Easy Access

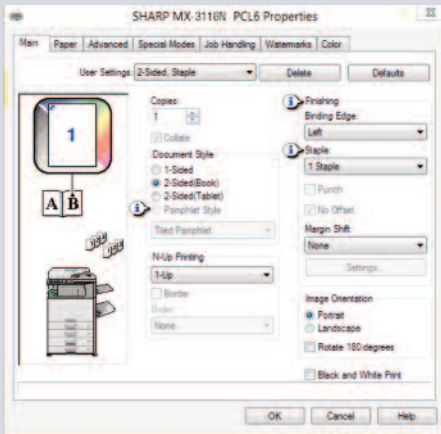
Sharp's easy-to-use **Document Filing System** can store frequently used files like forms and templates. Plus, with Sharp's **thumbnail preview** mode, stored jobs can be located and retrieved quickly. An advanced backup system and PIN-access security helps ensure that your files are safe.

#### Advanced Finishing Adds The Final Touch

The MX-2616N/MX-3116N also offers a compact, high-performance finisher with 3-position stapling and an available 3-hole punch that can give your documents a professional look and feel. In addition, an optional long paper feeding tray adds the availability of banner printing within the compact footprint of the MX-2616N/MX-3116N.



# ENHANCED WORKFLOW FEATURES INCREASE PRODUCTIVITY



Sharp's easy-to-use print drivers make accessing all of the MX-2616N/MX-3116N color features simple and easy.



USB 2.0 port is located on the front panel for easy access\*

Impressive workflow efficiency with leading edge features that help deliver optimum results.

## Exceptional Print Quality with Professional Finishing

With the MX-2616N/MX-3116N, your business can produce brilliant, high-quality color documents, as well as crisp B&W documents. With standard PCL6 compatible printing language, available PostScript3 compatible and XPS options, documents are printed with superb performance and efficiency. Plus, with **600 x 600 dpi** resolution, all of your documents will look great! **Powerful finishing features** include 3-position stapling for up to 50 sheets and 3-hole punching.\*

## A True Multi-Tasking Document System

The MX-2616N/MX-3116N features a **high-performance**, multi-tasking controller that delivers copy, scan, fax and print jobs continuously for optimum efficiency. Some controllers only perform one operation at a time, but the MX-2616N/MX-3116N continually processes incoming jobs even while existing jobs are output. The result? A workflow that keeps pace – even at crunch time.

## Direct USB Printing Adds Convenience and Portability

With Direct USB printing, users can print color or B&W image files in a variety of popular formats directly from USB memory devices such as a ThumbDrive™ or ClipDrive™.\* Need to print PDF brochures in a hurry for a big meeting? It's easy with the MX-2616N/MX-3116N. Just plug in your portable USB memory device, select the file, and your job prints immediately.

# FLEXIBLE DOCUMENT DISTRIBUTION



## Integrated Network Scanning

With Sharp's powerful **ImageSend™** technology, you get one-touch distribution features that centralize document workflow, help reduce mail costs and save time. With up to **seven destinations** – E-mail, Desktop, FTP, Network Folders (SMB), USB, Fax and Internet Fax – getting your document where it needs to go is as easy as pushing a button. For increased efficiency, **Send to Group** mode allows you to mix group broadcast to E-mail, Fax, and Internet Fax.\*

## Convenient E-mail Distribution

With Lightweight Directory Access Protocol (LDAP), there's no need to manually enter a recipient's complete E-mail address. Simply enter the first few characters and the MX-2616N/MX-3116N automatically searches and displays a list of matching names. **Unique File Naming** allows users to enter specific file names with custom subject fields, for easy recall of stored files. With **Sharpdesk®** personal document management software, users can organize scanned documents and integrate them into everyday workflow.

## Integrated Super G3 Fax and Internet Fax

Add powerful facsimile capability with the optional Super G3 fax module, which features automatic stapled/copied receptions, and Inbound Fax Routing to E-mail. Sharp's innovative PC fax driver enables users to send fax documents right from their desktop. For Internet fax operation, add the optional B&W Internet Fax expansion kit.



\*Some features require optional equipment and/or software.



## ADVANCED DEVICE MANAGEMENT MAXIMIZES PRODUCTIVITY

The MX-2616N/MX-3116N implements versatile device management capabilities through user-friendly software to achieve ultimate efficiency.

### Sharp Remote Device Management (SRDM)\*

Make management of your MX-2616N/MX-3116N simple and straight forward with Sharp Remote Device Management (SRDM). This easy-to-use software allows you to take control of the versatile system features and simplifies installation and management.

- With **Printer Status Monitor**, network users can view printer conditions, check paper levels, toner, and more, all through an easy-to-use interface.
- With advanced **Sharp Remote Device Manager\***, administrators can easily manage the setup, configuration, device settings, cloning and more! Advanced features such as **Remote Front Panel** allow administrators and support personnel to view and control the LCD panel of the machine remotely from virtually any PC on the network! Plus, with event-driven, real-time service alerts, administrators and supervisors can achieve higher productivity. Now, it is easier than ever to view service logs, click counts, history reports and more.
- Experience the convenience of an **Embedded Web Page** right from your desktop! This advanced web-based management tool allows users to create and manage their own network scanning destinations, profiles and web-links. Administrators can access device settings, color control, account information and security settings.

### Take Charge of Color Usage and Costs

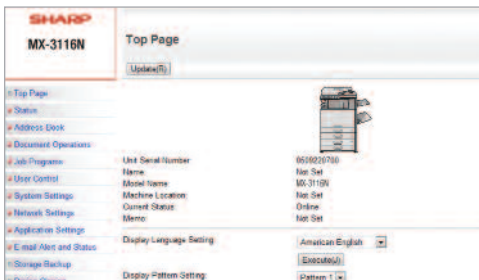
With Sharp's **device management system**, administrators and supervisors can define user groups on the MX-2616N/MX-3116N to manage and restrict features, such as color copying, scanning or printing. Easily set up a custom user group to manage page counts (copy, print, scan or fax operations) for both color and B&W. This helps to simplify cost management of color imaging. The MX-2616N/MX-3116N can **store profiles for up to 1000 users**.

### 24/7 Online Training with My Sharp™

Managing all of the advanced features of your Sharp product is simple and easy. Ask your Authorized Sharp Dealer about the **My Sharp website**. This dedicated customer training website is customized to your MX-2616N/MX-3116N and allows you to locate resources and find information specific to your configuration, truly helping you maximize your investment.



Separate print buttons for B&W and Color allow users to selectively manage use of color



Embedded web page



Sharp Remote Device Management

\*Not available at time of launch.



# HEIGHTENED SECURITY HELPS PROTECT YOUR BUSINESS

To help protect your data, the MX-2616N/MX-3116N offers several layers of security, making Sharp the optimum choice to help protect employee privacy and intellectual property.\* As a leader in office equipment security, Sharp makes it easy for virtually any business or government entity to safely deploy digital copying, printing, scanning and faxing.

## Authority Groups

Advanced account management enables administrators to set authority groups for access to features of the MX-2616N/MX-3116N. Administrators can control which department, for instance, has full access to copying, printing, scanning and/or fax. Walk-up users enter a Code, Local Name and Password, or LDAP User Authentication to access the features assigned to their group.

## Data Overwrite and Encryption

To help protect your data, the MX-2616N/MX-3116N can encrypt document data using **AES (Advanced Encryption Standard) 256-bit encryption**. The MX-2616N/MX-3116N can also erase the temporary memory on the hard drive by overwriting the encrypted data up to seven times, offering an unprecedented level of assurance.

- A convenient **End-of-Lease feature** overwrites all data, including document filing, user data, job status, date and address book.

## Network Scanning Access Control

To help protect your network from unauthorized e-mail communications, the MX-2616N/MX-3116N supports **User Authentication**, requiring users to login before performing any network scanning operations.

## Control Device Access Over the Network

To help restrict access to the device over the network, the MX-2616N/MX-3116N offers IPsec, SMB and extended support for **SSL Encryption** (Secure Sockets Layer), **IP/MAC address** filtering, IEEE 802.1x authentication, protocol enable/disable and port management for maximum security.

*\*Some features require optional equipment and/or software.*

## Documents Remain Confidential

The MX-2616N/MX-3116N offers **Confidential Printing**, which when used, requires users to enter a PIN code in order to print a queued document. To help protect your direct-print documents from unauthorized viewing, the MX-2616N/MX-3116N offers encrypted PDF printing and scanning. Additionally, **Secure Fax Release** ensures received fax documents are held in memory until an authorized user enters a PIN code, so that compliance with healthcare regulations such as HIPAA is easier.

## Tracking and Auditing Information

Legislation and industry policies require companies to be more aware of information flow from their offices. Sharp offers both built-in and additional hardware/software which allows users to control, access and track usage of each device on the network.

These scalable security offerings aim to protect your intellectual property, preserve confidential information and help your business to meet regulatory requirements, such as the Health Insurance Portability and Accountability Act (HIPAA), and the Gramm-Leach-Bliley Act (GLB). For additional information visit: [www.sharpusa.com/security](http://www.sharpusa.com/security).

## ENVIRONMENTAL COMMITMENT



### An Environmentally Responsible Approach to Product Design

The MX-2616N/MX-3116N utilizes Sharp's advanced micro-fine toner technology, which offers a lower consumption rate and produces less waste than conventional toners, resulting in longer replacement intervals. Sharp supplies are packaged using fully recyclable materials. Long-life consumable parts help minimize service intervals and down time, resulting in lower operating costs. With two different energy saving modes, power can be reduced or shut off at set intervals. All Sharp document systems are ENERGY STAR® certified and RoHS compliant to restrict the use of hazardous substances.

### Toner Recycling Program

As part of our commitment to helping preserve the environment, Sharp offers our customers zero waste land fill recycling for all Sharp consumables, including cartridges, bottles, toner collection containers and drum units. Sharp encourages customers to recycle their used Sharp toner cartridges in bulk by providing a pre-paid Recycling Kit for their return to our facility.

### Environmental Leadership

As a testament to our commitment to the environment, Sharp is a multi-year winner of the ENERGY STAR annual Excellence in Energy Proficiency Product Design. Sharp is also a multi-year winner of the SmartWay® Excellence Award, which recognizes companies for conserving energy and lowering greenhouse gas emissions in logistics and transportation. Sharp was also a previous recipient of the Excellence in Partnership Green Contractor Award and the Evergreen Award from the General Services Administration (GSA) and the Coalition for Government Procurement. These awards recognize environmentally responsible businesses and their efforts on recycling, waste reduction and affirmative procurement practices.

### Global Initiatives

Sharp is committed to environmental sustainability and corporate responsibility including planning, design, manufacturing, distribution and product end-of-life management. For more information about Sharp's environmental leadership including information about energy efficient products, electronics or toner cartridge recycling, please visit [www.sharpusa.com/environment](http://www.sharpusa.com/environment).

# MX-2616N/MX-3116N SPECIFICATIONS

## Main Specifications

<b>MX-2616N</b>	Includes multi-tasking controller, 320 GB HDD with document filing system, PCL6 network printing, network scanning, 100-sheet RSPF, auto-duplex, one 500-sheet paper drawers and 100-sheet bypass. Black and color developer is included in the box.		
<b>MX-3116N</b>	Includes multi-tasking controller, 320 GB HDD with document filing system, PCL6 network printing, network scanning, 100-sheet RSPF, auto-duplex, one 500-sheet paper drawers and 100-sheet bypass. Black and color developer is included in the box.		
<b>Type</b>	Desktop, color multi-function digital document system		
<b>Display</b>	7" (diagonally measured) color dot matrix touch panel. 800 x 480 dots (W-VGA)		
<b>Functions</b>	Copy, print, network print, network scan, document filing and fax <sup>1</sup>		
<b>Copy System</b>	Dry electrostatic transfer/Dual component developer/Magnetic brush development/OPC drums/Belt type fusing/white LED exposure		
<b>Originals</b>	Sheets and bound documents		
<b>Max Original Size</b>	11" x 17"		
<b>Copy Size</b>	Min. 5½" x 8½", Max. 11" x 17" + 12" x 18"		
<b>Copy Speed</b>	26/31 ppm B&W/Color (8½" x 11")		
<b>Multiple Copy</b>	Max. 999 copies		
<b>First Copy Time (Seconds)<sup>2</sup></b>	MX-2616N	MX-3116N	
	Black	Black	Color
	Platen Glass 5.9	8.1	5.8 7.9
	Doc. Feeder 9.1	11.6	9.1 11.6
<b>Warm Up Time</b>	18 seconds or less <sup>2</sup>		
<b>Magnification</b>	25% to 400% in 1% increments (with document feeder 25%-200%)		
<b>Original Feed</b>	100-sheet RSPF with original size detection		
<b>Scan Speed</b>	Copy mode: Up to 50 opm (B&W) @ 600 x 400 dpi; Up to 36 opm (Color) @ 600 x 600 dpi. Network Scan: Up to 50 opm (B&W or Color) 200 x 200 dpi. All times based on single-side letter originals.		
<b>Original Sizes</b>	5½" x 8½", 8½" x 11", 8½" x 11" R, 8½" x 14", 11" x 17" (13-32 lb. bond)		
<b>Paper Capacity</b>	Std. 600 sheets / Max. 3,100 sheets		
<b>Paper Feed System</b>	Standard: (1) 500-sheet paper drawer (letter/legal/ledger/statement size) and 100-sheet bypass tray (letter/legal/ledger/statement/envelope size). Optional: Single, double or triple drawer paper deck (500-sheets each drawer), tandem paper deck (500 + 2,000-sheets), letter/legal/ledger/statement size. See your local dealer for configurations.		
<b>Paper Types</b>	Paper drawers: 16 lb. bond -80 lb. cover. Other paper types include plain, pre-printed, recycled, pre-punched, letterhead and color paper. Bypass Tray: 16-28 lb. bond (plain paper), 13-16 lb. bond (thin paper), 28 lb. bond-110 lb. cover (heavy paper), 20-24 lb. bond (Monarch/Com-10 envelope), tab paper (letter size only). Also label paper, gloss paper, pre-printed, recycled, pre-punched, letterhead, color paper and OHP film.		
<b>Duplexing</b>	Standard automatic duplex copying and printing		
<b>CPU</b>	Multi-processor controller		
<b>Interface</b>	RJ-45 Ethernet (10/100/1000Base-T), USB 2.0 (2 host ports, front and rear), USB 2.0 (1 device ports)		
<b>Memory</b>	Standard 3 GB + 2 GB option <sup>1</sup>		
<b>Hard Disk Drive</b>	320 GB		
<b>Copy Resolution</b>	Scan: B&W/color: 600 dpi; Copy Output: B&W/color: 600 dpi		
<b>Color Modes</b>	Auto Color Control (ACS), Full Color Mode, Monochrome (B/W)		
<b>Exposure Control</b>	Modes: Automatic Text, Text/Photo, Text/Printed-Photo, Printed-Photo, Photo, Map, Pale-Color Document. Settings: Auto exposure control or 9 step manual exposure.		
<b>Halftone</b>	256 gradations/2 levels (monochrome)		
<b>Copy Features</b>	Scan-Once Print-Many, electronic sorting, offset-stacking, Auto Color Sensing (ACS), Auto Paper Sensing (APS), Auto Magnification Sensing (AMS), auto tray switching, rotation copy, reserve copy, tandem copy, book copy, margin shift, tab-paper insertion, edge erase, center erase, dual page copy, cover pages, insert pages, OHP insertion, job build, card shot, multi-page enlargement, mirror image, black-white reversal, centering, proof copy, 2-in-1/4-in-1, pamphlet, photo repeat, document filing, account management, job programs, date/character/page stamp.		
<b>Account Control</b>	Up to 1000 users. Supports user-number authentication (on device), login name/password (on device) or login name/password (on device via LDAP server) for Copy, Print, Scan, Fax and document management.		
<b>Output Tray Capacity</b>	Main output tray (top) 400 sheets (face down); optional eject tray (right 1 side) 100 sheets (face down)		
<b>Firmware Management</b>	Flash ROM with local (USB), network update capability and firmware update 1 to N with SRDM (Sharp Remote Device Management)		
<b>Configuration Method</b>	Web-based management with user/administrator level login, cloning (1 to N) with SRDM and remote front panel access		

## Main Specifications (continued)

<b>Service/Maintenance</b>	Remote front panel access, remote access to service logs and click counts		
<b>Accessibility Features</b>	Adjustment of Key Touch-Send and Speed, Concave Key, Document Feeder Free Stop, Job Programs, Remote Front Panel, Universal Grip for Paper Trays and Disable Screen Timeout		
<b>Environmental Standards</b>	The International Energy Star Program (EPA) Ver. 1.2, Law on Promoting Green Purchasing®, European RoHS (Restriction of Hazardous Substances)		
<b>Power</b>	AC 100-127 VAC, 60 HZ, 12 Amps		
<b>Power Cons.</b>	Maximum: 1440 W		
<b>Weight</b>	Approx. 166.7 lbs. (base model)		
<b>Dimensions</b>	24" (w) x 25½" (d), x 33" (h)		
<b>Network Printing System</b>			
<b>PDL</b>	Standard PCL6 compatible, optional PostScript®3™ compatible, optional XPS		
<b>Resolution</b>	600 x 600 dpi		
<b>Print Speed</b>	26/31 pages per minute (8½" x 11")		
<b>Print Drivers</b>	Windows Server® 2003-2012, Windows® XP, Windows XP x64, Windows Server x64, Windows Vista®, Windows Vista® x64, Windows® 7, Windows® 8, MAC OS®, OSX (including 10.4, 10.5, 10.6, 10.7, 10.8), all MAC PPD		
<b>Features</b>	Auto configuration, continuous printing, electronic sorting, offset stacking, N-up printing, duplex printing, transparency inserts, margin shift, image rotation, different cover page, poster print, job bypass print, job retention, confidential print, proof print, user authentication, image stamp and watermarks, multiple pamphlet, network tandem print, carbon copy print mode, different cover page/last page/other page, form overlay, tab paper settings, tab printing, chapter inserts, page interleave and bar code font printing (requires MX-PF10 bar code font kit)		
<b>Direct Printing (optional)</b>	File Types: TIFF, JPEG, PCL, PRN, TXT, PDF, Encrypted PDF, Postscript and XPS® Methods: FTP, Web page, E-mail and USB memory		
<b>Resident Fonts</b>	80 outline fonts (PCL), 136 fonts (PS)		
<b>Interface</b>	RJ-45 Ethernet 10/100/1000 Base-T, USB 2.0		
<b>Operating Systems</b>	Windows Server 2003-2008, Windows XP, Windows Vista, Windows 7, MAC OS X 10.4.11, 10.5-10.5.8, 10.6-10.6.8, 10.7-10.7.4 Novell® Netware® 3x, 4x, 5x, Sun® OS 4.1x, Solaris® 2x, Unix®, Linux® and Citrix® (Metaframe, Presentation Server 4, 4.5) and Windows Terminal Services. <sup>1</sup>		
<b>Network Protocols</b>	TCP/IP (IPv4, IPv6, IPSEC) SSL (HTTP, IPP, FTP), SNMPv3, 802.1x for Windows and Unix. LPD and LPR for UNIX. IPX/SPX® for Novell environments. EtherTalk®, AppleTalk® for Macintosh® environments. <sup>1</sup>		
<b>Printing Protocols</b>	LPR, IPP, IPPS, PAP, Raw TCP (port 9100), FTP and Novell Server/Printer		
<b>Network Security</b>	IP/Mac address filtering, protocol filtering, port management, user authentication and document administration. <sup>1</sup>		
<b>Security Standards</b>	IEEE-2600™ 2008 for MFP devices, DoD (NSTISSP) #11, DoD Directive 8500.2, DoD (DISA) <sup>1</sup>		
<b>Network Scanning System</b>			
<b>Scan Modes</b>	Standard: Color, monochrome, grayscale		
<b>Max Original Size</b>	11" x 17"		
<b>Optical Resolution</b>	600 dpi		
<b>Output Modes</b>	600 dpi, 400 dpi, 300 dpi, 200 dpi, 100 dpi		
<b>Image Formats</b>	Monochrome: TIFF, PDF, PDF/A, Encrypted PDF, XPS Color: Grayscale, Color TIFF, JPEG, PDF, PDF/A, Encrypted PDF, XPS Internet Fax: TIFF-FX, FIFF-F, TIFF-S <sup>1</sup>		
<b>Image Compression</b>	Monochrome Scanning: Uncompressed, G3 (MH), G4 (MR/MMR) Color/Grayscale: JPEG (high, middle, low) Internet Fax mode: MH/MMR (option)		
<b>Scan Destinations</b>	E-mail, Desktop, FTP, Folder (SMB), USB, Internet fax (option), Super G3 fax (option)		
<b>One-touch Destinations</b>	Up to 1000 (combined scan destinations)		
<b>Group Dest.</b>	Up to 500		
<b>Programs</b>	48 (combined)		
<b>Max. Jobs</b>	Up to 94		
<b>Network Protocols</b>	TCP/IP and SSL (includes HTTP, SMTP, LDAP, FTP, POP3), SMB, ESMTP and 802.1x.		
<b>Network Security</b>	E-mail server user authentication for LDAP and Active Directory		
<b>Software</b>	Sharpdesk® desktop document management software (1 user license)		

## B&W Super G3 Fax Kit (option)

<b>Transmission Mode</b>	Super G3, G3
<b>Modem Speed</b>	33.6 KBPS <sup>3</sup>
<b>Compression Methods</b>	JBIG, MMR, MR, MH
<b>Scanning Method</b>	Sheet fed simplex or duplex or book
<b>Max. Transmit Resolution</b>	400 dpi
<b>Transmit Speed</b>	Approx. 2 seconds with Super G3/JBIG <sup>4</sup>
<b>Auto Dialing</b>	Up to 1000 (combined scan destinations)
<b>Group</b>	Up to 500
<b>Dial/Destinations</b>	
<b>Inbound Fax</b>	Routing: Forwards received fax data to E-mail
<b>Long Length</b>	Up to 31½" (for transmission)
<b>Originals</b>	
<b>Programs</b>	48 (combined)
<b>Memory</b>	1 GB (shared)
<b>Halftone</b>	256 levels
<b>Features</b>	Quick on-line transmission, direct transmission, F-Code transmission/reception, rotate transmission, in-bound fax routing, anti-junk fax reception, automatically staple received faxes, secure fax release, out of paper memory reception, auto redial, 2-in-1 reception, duplex reception transaction reports, activity reports and PC fax.
<b>Inner Finisher (option)</b>	
<b>Type</b>	Built-in finisher (hole-punch unit option)
<b>Output Capacity</b>	500 sheets (letter/statement) or 250 sheets (ledger/legal size)
<b>Output Delivery</b>	Face down
<b>Stapling Media</b>	Plain paper, (letter, legal, or ledger size)
<b>Stapling Positions</b>	1 front, 1 rear, or both
<b>Power Source</b>	Supplied from main unit
<b>Stapling</b>	Up to 50 sheets (letter size) or 30 sheets (legal, ledger or mixed)
<b>Stapled Sets</b>	30 bundles or 500 sheets (letter or statement size) or 30 bundles or 250 sheets (ledger or legal size)
<b>Hole Punching</b>	Optional hole punch unit MX-PN11B (2 holes/3 holes)
<b>Weight</b>	Approx. 26.5 lbs.
<b>Dimensions</b>	24¾" (w) x 23½" (d) x 8" (h) (includes extended tray)

## Optional Equipment

<b>MX-DE12</b>	Stand/1 x 500 Sheet Paper Drawer
<b>MX-DE13</b>	Stand/2 x 500 Sheet Paper Drawer
<b>MX-DE14</b>	Stand/3 x 500 Sheet Paper Drawer
<b>MX-DE20</b>	Stand/500 + 2,000 Sheet Tandem Paper Drawer
<b>MX-LT10</b>	Long Paper Feeding Tray
<b>MX-36ABD</b>	Rolling Cabinet Base
<b>MX-FN17</b>	Finisher
<b>MX-PN11B</b>	3 Hole Punch Unit (Requires MX-FN17)
<b>MX-TR13N</b>	Exit Tray Unit
<b>MX-PK11</b>	PostScript 3 Kit
<b>MX-PUX1</b>	XPS Expansion Kit (Requires MX-SHP2GBXPS)
<b>MX-SHP2GBXPS</b>	XPS Expansion Memory (Requires MX-PUX1)
<b>MX-FX11</b>	Fax Expansion Kit
<b>MX-FWX1</b>	Internet Fax Kit
<b>MX-PF10</b>	Bar Code Font Kit
<b>MX-AMX1</b>	Application Integration Module

## Supplies

<b>MX-23NTBA</b>	Black Toner Cartridge
<b>MX-23NTCA</b>	Cyan Toner Cartridge
<b>MX-23NTMA</b>	Magenta Toner Cartridge
<b>MX-23NTYA</b>	Yellow Toner Cartridge
<b>MX-36NVBA</b>	Black Developer
<b>MX-36NVSA</b>	Cyan/Magenta/Yellow Developer
<b>MX-36NRSA</b>	Drum
<b>MX-230HB</b>	Toner Collection Container

<sup>1</sup> Some features may require optional equipment and/or software.

<sup>2</sup> May vary depending on product configuration, machine settings and operating and/or environmental conditions.

<sup>3</sup> Actual transmission time will vary based on line conditions.

<sup>4</sup> Based on Sharp Standard Test Chart with approximately 700 characters, letter size in standard resolution.



**SHARP**

SHARP ELECTRONICS CORPORATION  
Sharp Plaza, Mahwah, NJ 07495-1163  
1-800-BE-SHARP • www.sharpsusa.com

Design and specifications subject to change without notice. Sharp, Sharp OSA, Sharpdesk, My Sharp, and all related trademarks are trademarks or registered trademarks of Sharp Corporation and/or its affiliated companies. Windows, Windows Server and Windows Vista are trademarks or registered trademarks of Microsoft Corporation. All other trademarks are the property of their respective owners.

