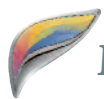


# SHARP®

POWERFUL PERFORMANCE, ENHANCED OPERABILITY, ENERGY EFFICIENCY



MX-2640N MX-3140N MX-3640N



A vision at work—MX-2640N/3140N/3640N—provides your business with the tools you need to gain the competitive advantage.

## FULL-COLOR LEDGER-SIZE WORKGROUP DOCUMENT SYSTEMS

Sharp's new MX-2640N/3140N/3640N color series document systems combine the simplicity of touch-screen menu navigation with robust multi-tasking workflow features that can help virtually any office accomplish more in less time. A large 10.1" (diagonally measured) high-resolution, tilting touch-screen display offers groundbreaking real-time image preview with intuitive flick-and-tap editing to help ensure your documents are produced accurately and without waste. This new series also offers many advanced features such as a fully customizable home screen, dynamic action menus that provide feature-specific guidance, and a full-size retractable keyboard for easy data entry. Plus, with Pantone® licensing, these models offer unprecedented levels of color fidelity – combined with true 1200 x 1200 dpi print resolution, they can help your business produce professional-looking color documents in-house with breathtaking image quality that is also economical. The new MX-2640N/3140N/3640N color series has been built on the latest Sharp OSA® development platform, making integration with network applications and cloud services easier than ever. And with Sharp's industry-leading security platform with standard 256-bit data encryption and overwrite protection, you can rest assured that your intellectual property is well protected.



innovation

VERSATILE

MULTI-FUNCTIONAL

POWERFUL

MULTI-TASKING

INTUITIVE

Advanced features plus multi-functional capability allow you to meet tomorrow's document needs today.

- Large 10.1" **high resolution touch-screen** display with **tilt view**
- **Real-time image preview** feature with flick, tap and slide navigation, and multi-touch pinch-and-zoom capability to shrink and enlarge images
- Fully **customizable home screen** feature enables users to add **custom backgrounds** and **icons**, change the display language and more



- New 500 + 2,000-sheet **tandem paper drawer option expands** maximum online paper capacity to **6,600 sheets**
- **Pantone Licensing** offers unprecedented levels of **color fidelity** to the **PANTONE MATCHING SYSTEM®**
- **1200 x 1200 dpi printing** provides clear, crisp images even on jobs with fine detail
- Industry-leading **ImageSEND™** function scans both black and white and color documents at up to 50 images per minute to USB devices, network folders, E-mail and more
- Network ready **PCL® 6** and true **Adobe® PostScript® 3™ printing systems** with **direct print** function and available **XPS** option
- Easy-to-use **Document Filing System** with thumbnail view and image preview features for easy identification
- Supports the latest **Sharp OSA development platform**, enabling businesses to easily integrate with **network applications and cloud services**
- **Flexible paper handling** system feeds up to **80 lb cover** through the paper trays and up to **110 lb cover** through the bypass tray
- **Super G3** fax option with intelligent **inbound routing** to multiple destinations
- Supports Sharp's **award-winning** security platform with **standard 256-bit data encryption** and up to 7 times **overwrite protection**
- **Energy efficient belt fusing system** offers low power consumption, fast warm up and enhanced print quality

# REVOLUTIONARY MFP FEATURES TO STREAMLINE YOUR WORKFLOW



Full-size retractable keyboard simplifies data entry.



Easily edit documents in scan preview mode.



Intuitive copy screen shows options on the left and menu guidance on the right.



Available paper capacity stores up to 6,600 sheets.

## Flexible design to meet the needs of your environment.

### A Smart Touch-Screen Helps You Get Your Work Done Fast

The new MX-2640N/3140N/3640N color workgroup document systems feature a **10.1"** (diagonally measured) **high-resolution LCD** that goes beyond basic touch-screen menu navigation. With advanced features that include **flick, tap, slide, pinch and zoom**, you can quickly access the powerful functions of this new series. In addition, a **tilting display panel** provides enhanced accessibility. A standard built-in full-size retractable keyboard makes data entry quick and easy.

### Easily Check and Edit Your Original Document

Save time and help reduce waste by correctly executing your copy or scan job the first time. With Sharp's **real-time scan preview and edit** functions, you can quickly rotate or delete pages, insert blank sheets, remove artifacts, change the color mode, even check the staple position before executing your job. Dynamic action menus provide **feature-specific guidance**, so it is easy to determine your choices for each operation. For comprehensive, step-by-step instructions on any operation, simply open the **on-line user manual** and navigate to the feature you need.

### High Image Quality You Expect with the Performance You Need

The new MX-2640N/3140N/3640N color workgroup document systems utilize a powerful multi-tasking controller designed to quickly execute complex copy, print and scan jobs even in busy office environments. Plus, with print speeds of **26, 31, and 36 pages per minute**, this new series can help elevate your office productivity to new heights. With **1200 x 1200 dpi** print resolution and Pantone licensing your business **can produce professional-looking color documents** with breathtaking image quality.

### Flexible Configurations for Today's Unique Office Environments

This new series offers a flexible paper handling system that includes an available 500 + 2,000-sheet tandem paper drawer. With **rugged paper tray handles** for easy access and available **on-line paper capacity for up to 6,600 sheets**, the machine is ready when you are. A standard 100-sheet reversing document feeder combined with automatic trayless duplexing, electronic sorting and integrated offset stacking, allow you to complete even large jobs in a snap.

### Advanced Finishing Adds the Final Touch

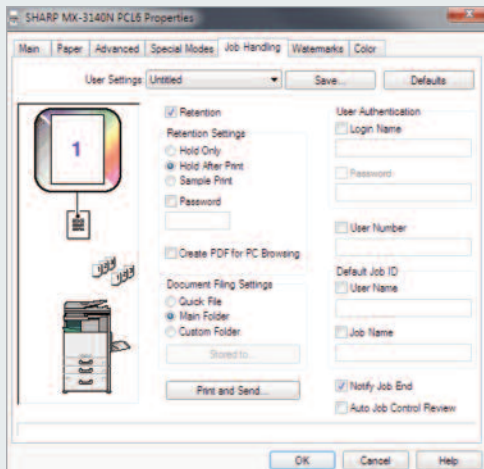
This series offers a choice of **two high-performance finishers** that can give your documents a professional look and feel. Choose from a **compact inner finisher** or floor-standing **saddle-stitch finisher**. Both finishers offer three-position stapling and an available 3-hole punch.



MX-3640N shown with saddle-stitch finisher and optional MX-LC11.



MX-3640N shown with compact inner finisher.



With Sharp's advanced job handling, you can retain print jobs on the hard drive for reprinting at a later date.



Sharp's integrated network scanning offers one-touch document distribution to up to seven destinations.



Sharp's Document Filing System with thumbnail preview makes it easy to locate and retrieve stored jobs.

## Advanced technologies deliver outstanding output quality and flexible document distribution at your fingertips.

### Exceptional Print Quality with Professional Output

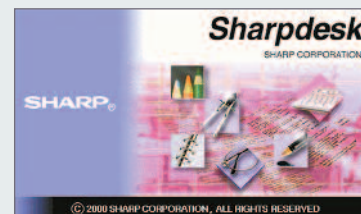
With the MX-2640N/3140N/3640N color series, your business can produce brilliant, high-color documents, as well as razor-sharp B&W documents. Plus, with **1200 x 1200 dpi resolution**, even documents with fine detail will look great! Easy-to-use print drivers allow you to set up complex jobs with just a few mouse clicks. The **PostScript driver** delivers extensive color control options, so you can manage color consistency right from your desktop. For even more flexibility, add the **optional XPS kit**. With Sharp's **advanced job retention** features, jobs can be stored on the hard drive to be reprinted again and again by walk-up users or from the embedded web page.

### Integrated Network Scanning

With Sharp's powerful **ImageSEND** technology, you get one-touch distribution features that help centralize document workflow, reduce mail costs and save time. With **multiple destinations** including E-mail, Desktop, FTP, Network Folders (SMB), Home Directory, USB, Fax and Internet Fax, getting your document where it needs to go is as easy as pushing a button. High-volume workgroups will appreciate the **Send to Group** mode that allows users to broadcast to a mixed group of E-mail, Fax, and Internet Fax destinations for increased efficiency.\*

### Convenient E-mail Distribution and Document Management

With Lightweight Directory Access Protocol (LDAP), there's no need to manually enter a recipient's complete E-mail address. Simply enter the first few characters and it automatically searches and displays a list of matching names. And with **Sharpdesk®** personal document management software and the available Sharp OSA Network Scanner Tool (NST), users can easily organize their scanned documents and integrate them into everyday workflow.



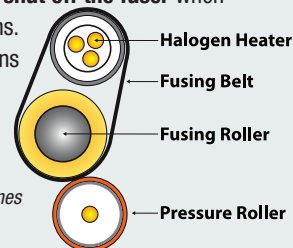
Sharpdesk personal document software

### Innovative Document Filing System For Easy Access

Sharp's easy-to-use **Document Filing System** provides a hard disk drive to **store frequently used files** like forms, templates and reports. With **thumbnail preview** mode, stored jobs can be located and retrieved quickly. An advanced backup system and PIN-access security helps ensure your files are safe. For critical environments, an optional **back-up hard disk drive** is available.

### Advanced Energy Saving Features

This new color series utilizes several energy efficient technologies to minimize power consumption and maximize energy savings. An **LED exposure lamp** reduces power significantly when compared to conventional exposure lamps. A customizable seven-day power management scheduler allows businesses to define the days and times when power will be turned on and turned off. Also, with Sharp's **Auto Power Management** function the MFP can be set to shut-off automatically based on usage trends. Sharp's **Eco-Scan** mode can **shut off the fuser** when scanning documents, previewing images, faxing and other operations. A state-of-the-art **belt fusing system** consumes less power, shortens warm-up time and helps eliminate roller marks sometimes caused by conventional fusing.



State-of-the-art belt fusing system consumes less power and shortens warm-up time.

\*Some features require optional equipment.

## Streamline your document workflow and enhance your productivity with Sharp OSA technology.

### Integrating With Network Applications and Cloud Services Has Never Been So Easy

The MX-2640N/3140N/3640N color series offers **powerful document workflow capabilities** to help businesses leverage their network infrastructure, cloud-enabled services and more!\* While others are limited to a small circle of productivity, the Sharp OSA development platform allows businesses to leverage the power of their network applications, back-end systems, even cloud-enabled services, right from the touch-screen panel of this new series.

### Save Time, Increase Efficiency

You'll save time and increase the efficiency of everyday tasks with Sharp OSA technology because it can be virtually seamless to the user. Any MX-2640N/3140N/3640N anywhere in the organization can display choices that were once only available on a desktop PC. With **one-touch access** to business applications via Sharp OSA integration, you can start and finish a document distribution task without worry.

*\*Some features require optional equipment.*

### Customized Integration

Sharp OSA technology also provides **powerful customization**. With the ability to personalize applications and processes specific to your business, Sharp OSA technology can help eliminate redundancy and **streamline workflow**, helping to save time and **optimize productivity**. The latest version of Sharp OSA technology can reach beyond the firewall, enabling cloud-based applications over the Internet. And since Sharp OSA technology utilizes industry-standard network protocols such as SOAP and XHTML, third party software developers can deliver customized solutions to your business faster than ever.

### The Convenience You Want With the Security You Need

The MX-2640N/3140N/3640N color series with the Sharp OSA development platform is the logical choice for providing fast, **flexible access to documents and applications**...no matter where you are in the office. You also get the controlled access and tracking ability you require with tighter integration capabilities for network security and accounting applications.



## ADVANCED DEVICE MANAGEMENT TOOLS MAXIMIZE EFFICIENCY

## The MX-2640N/3140N/3640N color series document systems enhance operational efficiency through versatile device management capabilities.

### Sharp Remote Device Manager (SRDM)

Make management of your MX-2640N/3140N/3640N simple and straight forward with Sharp Remote Device Manager (SRDM). This easy-to-use software allows you to take control of the versatile system features and simplifies installation and management.

- With **Printer Status Monitor**, network users can view printer conditions, check paper levels, toner, and more, all through an easy-to-use interface.
- With Sharp Remote Device Manager, administrators can easily manage the setup, configuration, device settings, cloning and more! Advanced features such as **Remote Front Panel** allow administrators and support personnel to view and control the LCD panel of the machine remotely from virtually any PC on the network. Plus, with event-driven, real-time service alerts, administrators and supervisors can achieve higher productivity. Now it is easier than ever to view service logs, click counts, history reports and more.
- Experience the convenience of an **Embedded Web Page** right from your desktop! This advanced web-based management tool allows users to create and manage their own network scanning destinations, profiles and web-links. Administrators can access device settings, color control, account information and security settings.

### Take Charge of Color Usage and Costs

With Sharp's device management system, administrators and supervisors can **define user groups** on the MX-2640N/3140N/3640N to manage and restrict features, such as color copying, scanning or printing. Easily set up a custom user group to manage page counts (copy, print, scan or fax operations) for both color and B&W. This helps to simplify cost management of color imaging. The MX-2640N/3140N/3640N can store profiles for up to 1,000 users.

### 24/7 Training with My Sharp™

Managing all of the advanced features of your Sharp product is simple and easy. Ask your Authorized Sharp Dealer about the **My Sharp** website. This dedicated customer training website is customized to your MX-2640N/3140N/3640N and allows you to locate resources and find information specific to your configuration, truly helping you maximize your investment.



Remote Front Panel

Embedded Web Page

# HEIGHTENED SECURITY HELPS PROTECT YOUR BUSINESS

To help protect your data, the MX-2640N/3140N/3640N offers several layers of security, making Sharp the optimum choice to help protect employees privacy and intellectual property.\* As a leader in office equipment security, Sharp makes it easy for virtually any business or government entity to safely deploy digital copying, printing, scanning and faxing.

## Authority Groups

Advanced account management enables administrators to set authority groups for access to features of the MX-2640N/3140N/3640N. Administrators can control which department, for instance, has full access to copying, printing, scanning and/or fax. Walk-up users enter a Code, Local Name and Password, or LDAP User Authentication to access the features assigned to their group.

## Data Overwrite and Encryption

To help protect your data, the MX-2640N/3140N/3640N can encrypt document data using **AES (Advanced Encryption Standard) 256-bit encryption**. The MX-2640N/3140N/3640N can also erase the temporary memory on the hard drive by overwriting the encrypted data up to seven times, offering an unprecedented level of assurance. A convenient **End-of-Lease feature** overwrites all data, including document filing, user data, job status, date and address book.

## Network Scanning Access Control

To help protect your network from unauthorized E-mail communications, the MX-2640N/3140N/3640N supports **User Authentication**, requiring users to login before performing any network scanning operations.

## Control Device Access Over the Network

To help restrict access to the device over the network, the MX-2640N/3140N/3640N offers IPsec, SMB and extended support for **SSL Encryption** (Secure Sockets Layer), **IP/MAC address** filtering, IEEE 802.1x authentication, protocol enable/disable and port management for maximum security.

*\*Some features require optional equipment and/or software.*

## Documents Remain Confidential

The MX-2640N/3140N/3640N offers **Confidential Printing**, which when used, requires users to enter a PIN code in order to print a queued document. To help protect your direct-print documents from unauthorized viewing, the MX-2640N/3140N/3640N offers encrypted PDF printing and scanning. Additionally, **Secure Fax Release** ensures received fax documents are held in memory until an authorized user enters a PIN code, so that compliance with healthcare regulations such as HIPAA is easier.

## Tracking and Auditing Information

Legislation and industry policies require companies to be more aware of information flow from their offices. Sharp offers both built-in and additional hardware/software which allows users to control, access and track usage of each device on the network.

## Data Security Kit (Optional)

For maximum protection, the optional data security kit offers additional features, such as Data Overwrite at Power Up, Document Filing access control and Restricted Status Display.

These scalable security offerings aim to protect your intellectual property, preserve confidential information and help your business to meet regulatory requirements, such as the Health Insurance Portability and Accountability Act (HIPAA), and the Gramm-Leach-Bliley Act (GLB). For additional information visit: [www.sharpusa.com/security](http://www.sharpusa.com/security).

## ENVIRONMENTAL COMMITMENT



### An Environmentally Responsible Approach to Product Design

The MX-2640N/3140N/3640N utilizes Sharp's advanced micro-fine toner technology, which offers a lower consumption rate and produces less waste than conventional toners, resulting in longer replacement intervals. Sharp supplies are packaged using fully recyclable materials. Long-life consumable parts help minimize service intervals and down time, resulting in lower operating costs. With two different energy saving modes, power can be reduced or shut off at set intervals. All Sharp document systems are ENERGY STAR® certified and RoHS compliant to restrict the use of hazardous substances.

### Toner Recycling Program

As part of our commitment to helping preserve the environment, Sharp offers our customers zero waste land fill recycling for all Sharp consumables, including cartridges, bottles, toner collection containers and drum units. Sharp encourages customers to recycle their used Sharp toner cartridges in bulk by providing a pre-paid Recycling Kit for their return to our facility.

### Environmental Leadership

As a testament to our commitment to the environment, Sharp is a three-time winner of the ENERGY STAR annual Excellence in Energy Proficiency Product Design. Sharp is also a four-time winner of the SmartWay® Excellence Award, which recognizes companies for conserving energy and lowering greenhouse gas emissions in logistics and transportation. Sharp was also a previous recipient of the Excellence in Partnership Green Contractor Award and the Evergreen Award from the General Services Administration (GSA) and the Coalition for Government Procurement. These awards recognize environmentally responsible businesses and their efforts on recycling, waste reduction and affirmative procurement practices.

### Global Initiatives

Sharp is committed to environmental sustainability and corporate responsibility including planning, design, manufacturing, distribution and product end-of-life management. For more information about Sharp's environmental leadership including information about energy efficient products, electronics or toner cartridge recycling, please visit [www.sharpusa.com/environment](http://www.sharpusa.com/environment).

# MX-2640N/MX-3140N/MX-3640N SPECIFICATIONS

## Main Specifications

<b>MX-2640N/3140N/3640N</b>	Base models include multi-tasking controller, high-resolution touch-screen display, 100-sheet RSPF, 320 GB hard disk drive with document filing, PCL <sup>®</sup> 6 and Adobe <sup>®</sup> PostScript <sup>®</sup> 3 <sup>™</sup> printing systems, network printing, network scanning, duplexing, 500-sheet paper drawer, 100-sheet bypass tray. Developer is included.																				
<b>Type</b>	Console, color multi-function digital document system																				
<b>Display</b>	10.1" (diagonally measured) color dot matrix touch panel tilting display, 1024 x 600 dots (W-SVGA)																				
<b>Functions</b>	Copy, print, network print, network scan, document filing and fax <sup>1</sup>																				
<b>Copy System</b>	Dry electrostatic transfer/Dual component developer/Magnetic brush development/OPC drums/Belt type fusing/white LED exposure																				
<b>Originals</b>	Sheets and bound documents																				
<b>Max Original Size</b>	11" x 17"																				
<b>Copy Size</b>	Min. 5½" x 8½", Max. 11" x 17" + 12" x 18"																				
<b>Copy Speed</b>	26/31/36 ppm B&W/color (8½" x 11")																				
<b>Multiple Copy</b>	Max. 999 copies																				
<b>First Copy Time (Seconds)<sup>2</sup></b>	<table border="1"> <thead> <tr> <th></th> <th>MX-2640N</th> <th>MX-3140N</th> <th>MX-3640N</th> </tr> </thead> <tbody> <tr> <td>Black</td> <td>5.9</td> <td>5.8</td> <td>5.2</td> </tr> <tr> <td>Color</td> <td>8.1</td> <td>7.9</td> <td>6.8</td> </tr> <tr> <td>Platen Glass</td> <td>9.1</td> <td>11.6</td> <td>10.6</td> </tr> <tr> <td>Doc. Feeder</td> <td>9.1</td> <td>11.6</td> <td>10.6</td> </tr> </tbody> </table>		MX-2640N	MX-3140N	MX-3640N	Black	5.9	5.8	5.2	Color	8.1	7.9	6.8	Platen Glass	9.1	11.6	10.6	Doc. Feeder	9.1	11.6	10.6
	MX-2640N	MX-3140N	MX-3640N																		
Black	5.9	5.8	5.2																		
Color	8.1	7.9	6.8																		
Platen Glass	9.1	11.6	10.6																		
Doc. Feeder	9.1	11.6	10.6																		
<b>Warm Up Time</b>	18 seconds or less <sup>2</sup>																				
<b>Magnification</b>	25% to 400% in 1% increments (with document feeder 25%-200%)																				
<b>Original Feed</b>	100-sheet RSPF with original size detection																				
<b>Scan Speed</b>	Copy mode: up to 50 OPM (B&W) @ 600 x 400 dpi; up to 36 OPM (Color) @ 600 x 600 dpi. <sup>2</sup>																				
<b>Original Sizes</b>	Network scan: up to 50 OPM (B&W or Color) 200 x 200 dpi. <sup>2</sup>																				
<b>Paper Feed System</b>	Standard: (1) 500-sheet paper drawer (letter/legal/ledger/statement) and 100-sheet bypass tray (letter/legal/ledger/statement/envelope). Optional: single, double or triple drawer paper deck (500 sheets each drawer), tandem paper deck (2,500 sheets) letter/legal/ledger/statement.																				
<b>Paper Types</b>	Paper drawers: 16 lb. bond to 80 lb. cover. Other paper types include plain, pre-printed, recycled, pre-punched, letterhead and color paper. Bypass tray: 16-28 lb. bond (plain paper), 13-16 lb. bond (thin paper), 80-110 lb. cover (heavy paper), 20-24 lb. bond (Monarch/Com-10 envelope), tab paper (letter). Also label paper, gloss paper, pre-printed, recycled, pre-punched, letterhead, color paper and OHP film.																				
<b>Duplexing</b>	Standard automatic duplex copying and printing																				
<b>CPU</b>	Up to 1.8 GHz multi-processor design																				
<b>Interface</b>	RJ-45 Ethernet (10/100/1000Base-T), USB 2.0 (2 host ports, front and rear), USB 2.0 (1 device port, rear)																				
<b>Memory</b>	Standard 4 GB copy/print (shared)																				
<b>Hard Disk Drive</b>	320 GB; 105 GB for document filing																				
<b>Copy Resolution</b>	Scan: B&W/color: 600 x 600 dpi; Copy output: B&W/color: 600 x 600 dpi																				
<b>Color Modes</b>	Auto Color Control (ACC), Full Color Mode, Monochrome (B&W)																				
<b>Exposure</b>	Modes: Automatic Text, Text/Photo, Text/Printed-Photo, Printed-Photo, Photo, Map, Pale-Color Document. Settings: Auto or 9 step manual																				
<b>Control</b>	256 gradations/2 levels (monochrome)																				
<b>Copy Features</b>	Scan-Once Print-Many, electronic sorting, offset-stacking, Auto Color Sensing (ACS), Auto Paper Sensing (APS), Auto Magnification Sensing (AMS), image preview, image edit, auto tray switching, rotation copy, reserve copy, tandem copy, book copy, margin shift, tab-paper insertion, edge erase, center erase, book divide, dual page copy, cover pages, insert pages, OHP insertion, job build, card shot, blank page skip, mirror image, black-white reversal, centering, proof copy, 2-in-1/4-in-1/8-in-1, pamphlet, watermark custom image, job programs, date/character/page stamp.																				
<b>Account Control</b>	Up to 1000 users. Supports user-number authentication (on device), login name/password (on device) or login name/password (on device via LDAP server) for copy, print, scan, fax and document management.																				
<b>Output Tray</b>	Main output tray (top) 400 sheets (face down); optional eject tray (right 1 side) 100 sheets (face down)																				
<b>Capacity</b>	Flash ROM with local (USB), network update capability and firmware update 1 to N with SRDM (Sharp Remote Device Manager)																				
<b>Configuration Method</b>	Web-based management with user/administrator level login, cloning (1 to N) with SRDM and remote front panel access																				
<b>Service/Functions</b>	Remote front panel, remote access to service logs and click counts																				
<b>Accessibility Features</b>	Tilt front panel, adjustment of key touch sound and speed, document feeder free stop, job programs, remote front panel, universal grip for paper trays, and disable screen timeout																				
<b>Environmental Standards</b>	International Energy Star Program Ver. 1.2																				
<b>Power</b>	AC 100-127 VAC, 60 HZ, 12 Amps																				
<b>Power Consumption</b>	Maximum: 1440 W or less																				
<b>Weight</b>	167.5 lbs.																				
<b>Approx. Dimensions</b>	24" (w) x 27" (d) x 33" (h)																				

## Network Printing System

<b>PDL</b>	Standard PCL6 compatible, PostScript 3, optional XPS
<b>Resolution</b>	1200 x 1200 dpi
<b>Print Speed</b>	26/31/36 pages per minute (8½" x 11")
<b>Print Drivers</b>	Windows XP, Windows XP x64, Windows Server <sup>®</sup> 2003-2008, Windows Server 2003-2008 x64, Windows Vista <sup>®</sup> , Windows Vista x64, Windows 7, Windows 7 x64, Windows 8, Windows 8 x64, Windows Server 2012 x64, Windows PPD, MAC OS X <sup>®</sup> (including 10.4, 10.5, 10.6, 10.7, 10.8), all MAC PPD
<b>Features</b>	Auto configuration, continuous printing, electronic sorting, offset stacking, N-up printing, duplex printing, transparency inserts, margin shift, image rotation, different cover page, poster print, job bypass print, job retention, confidential print, proof print, user authentication, image stamp and watermarks. Additional features: Multiple pamphlet, network tandem print, carbon copy print mode, different cover page/last page/other page, form overlay, tab paper settings, tab printing, chapter inserts, page Interleave and bar code font printing <sup>1</sup>
<b>Direct Printing</b>	File Types: TIFF, JPEG, PCL, PRN, TXT, PDF, Encrypted PDF, PostScript and XPS <sup>1</sup> ; Methods: FTP, SMB, Web page, E-mail and USB memory
<b>Resident Fonts</b>	80 outline fonts (PCL), 136 fonts (PS)
<b>Interface</b>	RJ-45 Ethernet 10/100/1000 Base-T, USB 2.0
<b>Operating Systems</b>	Windows Server 2003-2008, Windows XP, Windows Vista, Windows 7, Windows 8, Mac OS X 10.4, X10.5, X10.6, X10.7, X10.8, Novell <sup>®</sup> NetWare <sup>®</sup> , UNIX <sup>®</sup> , Linux <sup>®</sup> and Citrix <sup>®</sup> (XenApp 5.0, 6.0, 6.5) and Windows Terminal Services, SAP device types <sup>1</sup>
<b>Network Protocols</b>	TCP/IP (IPv4, IPv6, IPSEC) SSL (HTTP, IPP, FTP), SNMPv3, SMTP, POP3, LDAP, 802.1x for Windows and Unix. LPD and LPR for Unix. IPX/SPX <sup>®</sup> for Novell environments. EtherTalk <sup>®</sup> , AppleTalk <sup>®</sup> for Macintosh <sup>®</sup> environments. <sup>1</sup>
<b>Printing Protocols</b>	LPR, IPP, IPPS, PAP, Raw TCP (port 9100), FTP, POP3, HTTP, and Novell Pserver/Rprinter
<b>Network Security</b>	IP/MAC address filtering, protocol filtering, port management, user authentication and document administration. <sup>1</sup>
<b>Security Standards</b>	IEEE-2600TM-2008, DoD (NSTISSF) #11, CAC/PIV access control <sup>1</sup>

## Network Scanning System

<b>Scan Modes</b>	Standard: Color, monochrome, grayscale
<b>Max Original Size</b>	11" x 17"
<b>Optical Resolution</b>	600 dpi
<b>Output Modes</b>	600 dpi, 400 dpi, 300 dpi, 200 dpi, 150 dpi, 100 dpi
<b>Image Formats</b>	Monochrome: TIFF, PDF, PDF/A, Encrypted PDF, XPS Color: Grayscale, Color TIFF, JPEG, PDF, Encrypted PDF, XPS Internet Fax: TIFF-FX, TIFF-F, TIFF-S, PDF/A, Compact PDF <sup>1</sup>
<b>Image Compression</b>	Monochrome scanning: G3 (MH), G4 (MR/MMR) Color/grayscale: JPEG (high, middle, low) Internet fax mode: MH/MMR (option)
<b>Scan Destinations</b>	E-mail, Desktop, FTP, Network Folder (SMB), Home Directory, USB, Internet fax (option), Super G3 fax (option)
<b>One-touch Destinations</b>	Up to 2000 (combined scan destinations)
<b>Group Destinations</b>	Up to 500
<b>Programs</b>	48 (combined)
<b>Max. Jobs</b>	Up to 100
<b>Network Protocols</b>	TCP/IP and SSL (includes HTTP, SMTP, LDAP, FTP, POP3), SMB, ESMTP and 802.1x.
<b>Network Security Software</b>	E-mail server user authentication for LDAP and Active Directory Sharpdesk <sup>®</sup> desktop document management software (1 user license), Sharpdesk Mobile

## B&W Super G3 Fax Kit (option)

<b>Transmission Mode</b>	Super G3, G3
<b>Modem Speed</b>	33.6 KBPS <sup>3</sup>
<b>Compression Methods</b>	JBIG, MMR, MR, MH
<b>Scanning Method</b>	Sheet fed simplex or duplex or book
<b>Max. Resolution</b>	400 dpi
<b>Transmit Speed</b>	Approx. 2 seconds with Super G3/JBIG <sup>4</sup>
<b>Auto Dialing</b>	Up to 2,000 (combined scan destinations)
<b>Group Dial</b>	Up to 500 destinations
<b>Inbound Fax Routing</b>	Forwards received fax data to E-mail, FTP, SMB, Desktop, Fax, I-Fax <sup>1</sup>
<b>Long Length Originals</b>	Up to 33 ¼" (for transmission)
<b>Programs</b>	48 (combined)
<b>Memory</b>	Shared
<b>HalfTone</b>	256 levels

## Saddle Stitch Finisher (option)

<b>Type</b>	Console finisher with dual exit trays (mounts on left side of host machine)
<b>Output Trays</b>	Upper tray: Offset stack tray Lower tray: Book tray for saddle stitch
<b>Output Capacity</b>	1000 sheets (letter/statement size) or 500 sheets (legal, ledger or letter-R size)
<b>Stapling</b>	Up to 50 sheets (letter/statement) or 25 sheets (legal, ledger or mixed)
<b>Output Delivery</b>	Face down
<b>Stapling Media</b>	Plain paper, letter/legal/ledger size or mixed
<b>Stapling Positions</b>	1 front, 1 rear, or both
<b>Saddle Stitch Function</b>	Center stitch/center folding (2 staples) letter/legal/ledger paper sizes
<b>Saddle Stitch Max. Sets</b>	Up to 10 sets (11-15 sheets per set)/15 sets (6-10 sheets per set)/20 sets (1-5 sheets per set)
<b>Power</b>	70 W or less (supplied from main unit)
<b>Consumption</b>	
<b>Hole Punching</b>	Optional hole punch unit MX-PNX5B (2 holes/3 holes)
<b>Weight</b>	Approx: 88 lbs.
<b>Dimensions</b>	26" (w) x 25" (d) x 39" (h) (with tray extended)

## Inner Finisher (option)

<b>Type</b>	Built-in finisher (hole punch unit option)
<b>Output Capacity</b>	500 sheets (letter/statement) or 250 sheets (ledger/legal size)
<b>Output Delivery</b>	Face down
<b>Stapling Media</b>	Plain paper (letter, legal, or ledger size)
<b>Stapling Positions</b>	1 front, 1 rear, or both
<b>Power</b>	50 W or less (supplied from main unit)
<b>Consumption</b>	
<b>Stapling</b>	Up to 50 sheets (letter size) or 30 sheets (legal, ledger or mixed)
<b>Stapled Sets</b>	30 bundles or 500 sheets (letter or statement size) or 30 bundles or 250 sheets (legal or ledger size)
<b>Hole Punching</b>	Optional hole punch unit MX-PN11B (2 holes/3 holes)
<b>Weight</b>	Approx. 26.5 lbs.
<b>Dimensions</b>	24¾" (w) x 23½" (d) x 8" (h) (includes extended tray)

## Optional Equipment

<b>MX-DE12</b>	Stand/1 x 500-sheet Paper Drawer
<b>MX-DE13</b>	Stand/2 x 500-sheet Paper Drawer
<b>MX-DE14</b>	Stand/3 x 500-sheet Paper Drawer
<b>MX-DE20</b>	Stand/500 + 2,000-sheet Tandem Paper Drawer
<b>MX-LT10</b>	Long Paper Feeding Tray
<b>MX-36ABD</b>	Rolling Cabinet Base
<b>MX-LC11</b>	Large Capacity Tray
<b>MX-FN17</b>	Inner Finisher
<b>MX-PN11B</b>	3 Hole Punch Unit (Requires MX-FN17)
<b>MX-SCX1</b>	Staple Cartridge (MX-FN17)
<b>MX-FN10</b>	Saddle Stitch Finisher
<b>MX-RB10N</b>	Paper Pass Unit (Required for MX-FN10)
<b>MX-PNX5B</b>	3 Hole Punch Unit (MX-FN10)
<b>AR-SC3</b>	Staple Cartridge (MX-FN10)
<b>MX-TR13N</b>	Right-side Exit Tray Unit
<b>MX-TU12</b>	Center Exit Tray Unit
<b>MX-PUX1</b>	XPS Expansion Kit (Requires MX-SHP2GBXPS)
<b>MX-SHP2GBXPS</b>	2GB Memory Upgrade (Required for MX-PUX1)
<b>MX-FX11</b>	Fax Expansion Kit
<b>MX-FWX1</b>	Internet Fax Kit
<b>MX-PF10</b>	Bar Code Font Kit
<b>AR-SU1</b>	Stamp Unit (Requires AR-SV1 Stamp Cartridge)
<b>AR-SV1</b>	Stamp Cartridge
<b>MX-EB11</b>	Enhanced Compression Kit
<b>MX-EB12N</b>	Mirror Expansion Kit
<b>MX-AM10</b>	Web Browsing Expansion Kit (Standard on the MX-3640N)
<b>MX-AMX1</b>	Application Integration Module
<b>MX-FR41U</b>	Commercial Data Security Kit
<b>MX-EC50</b>	CAC Reader (Requires Data Security Kit)
<b>DVENDFS</b>	Generic Vendor Interface Kit

## Supplies

<b>MX-36NTBA</b>	Black Toner Cartridge
<b>MX-36NTCA</b>	Cyan Toner Cartridge
<b>MX-36NTMA</b>	Magenta Toner Cartridge
<b>MX-36NTYA</b>	Yellow Toner Cartridge
<b>MX-36NVBA</b>	Black Developer
<b>MX-36NVSA</b>	Cyan/Magenta/Yellow Developer
<b>MX-36NRSA</b>	Drum
<b>MX-230HB</b>	Toner Collection Container

<sup>1</sup> Some features require optional equipment. See your local dealer.

<sup>2</sup> May vary depending on product configuration, machine settings and operating and/or environmental conditions.

<sup>3</sup> Actual transmission time will vary based on line conditions.

<sup>4</sup> Based on Sharp Standard Test Chart with approximately 700 characters, letter size in standard resolution.



ShAr p El Ect r On iCS COr pOr at iOn  
Sharp plaza, Mahwah, nJ 07495-1163  
1-800-BE-ShAr p • www.sharpusa.com

Design and specifications subject to change without notice. Sharp, Sharp OSA, Sharpdesk, My Sharp, and all related trademarks are trademarks or registered trademarks of Sharp Corporation and/or its affiliated companies. Windows, Windows Server and Windows Vista are trademarks or registered trademarks of Microsoft Corporation. All other trademarks are the property of their respective owners.

