

SHARP®

DESKTOP MONOCHROME DOCUMENT SYSTEM



MX-B557F

Sharp desktop monochrome document systems deliver leading-edge integration and powerful productivity, all in a small, compact design.

A HIGHER BENCHMARK OF INNOVATION

performance

The MX-B557F desktop monochrome document system produces crisp, high-quality output with exceptional ease of use. This model provides customers with an intuitive user experience and the confidence of knowing their jobs will come out right the first time, every time. Designed with high-performance features typically found on larger machines, the compact MX-B557F delivers the productivity and performance you need in your home office or place of business.

Key Features

- **Ease of Use** – Intuitive 10" (diagonal) touchscreen display offers a user-friendly graphical interface with simplified Easy Modes, integrated on-screen user guides and quick access to network services.
- **Productivity** – Out-of-the box copy, print, scan and fax capabilities plus standard **Cloud Connect** features and optional wireless connectivity enables users to easily manage their workflow from PCs, smartphones and tablets.
- **Workspace Friendly** – Integrates seamlessly with today's complex network environments and supports popular cloud services and mobile technologies. Sharp utilizes system updates to provide feature enhancements and to ensure your machine remains compatible with current technology.

The compact MX-B557F desktop monochrome document system offers powerful productivity features enabling users to quickly execute workflow tasks whether in the office, or working from home.



DESIGNED TO DELIVER HIGH PRODUCTIVITY



MX-B557F shown with optional inner finisher

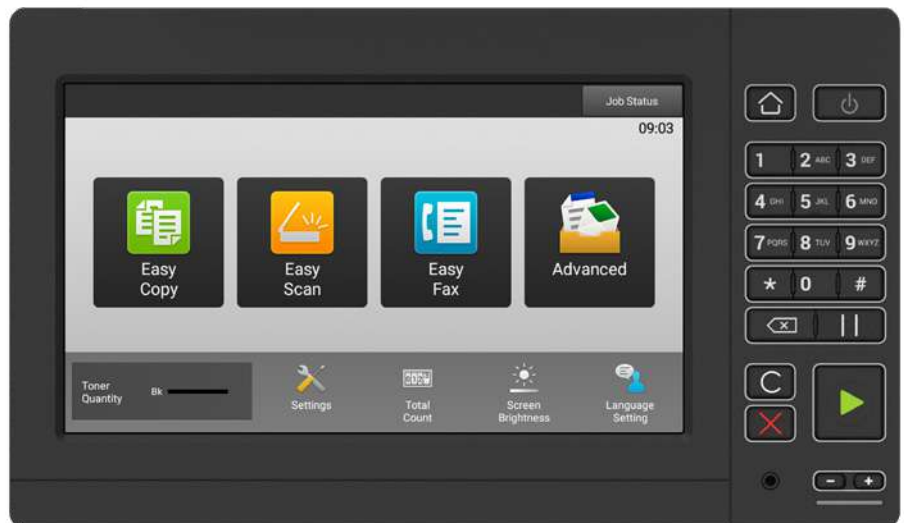
INTUITIVE INTERFACE

SEAMLESS CLOUD INTEGRATION

LEADING EDGE SECURITY

An MFP with a reliable design that meets tomorrow's business needs today.

- Standard **copy, print, scan** and **fax** capability right out of the box.
- Supports **letter size, legal size** and **envelopes** through the standard paper drawer or bypass tray.
- **200-sheet duplexing document feeder** scans both sides of a document in a single pass for enhanced productivity.
- Offers up to **five paper sources** with available 3,300-sheet maximum paper capacity.
- **10" (diagonal) color touchscreen** with adjustable viewing angle offers smooth, tablet-style interaction



- **Standard compact PDF** feature dramatically reduces the file size of most color scanned documents resulting in decreased network traffic and efficient use of cloud storage.
- **Convenient USB port** located in the front of the device lets users access the machine quickly when printing direct from a USB drive.
- Print **Microsoft® Word, Excel®, or PowerPoint®** files directly from a mobile device, USB drive, or file server.
- Built-in **optical character recognition (OCR)** allows users to convert a scanned document into a searchable PDF file or into an editable Word file.
- **Supports popular mobile technologies**, enabling users to easily print files from smartphones, tablets and even notebook computers.
- Protect your intellectual property. **A wide range of security features** help to keep your information safe, whether it's in a document, on the device, or over your network.



ADVANCED FUNCTIONALITY – COMPACT DESIGN



Easy Copy screen offers the most commonly used settings.



Easily copy documents in 1-sided or 2-sided formats.



Optional wireless network interface for convenient scanning and printing from mobile devices.

*Some features require optional equipment and/or software/services.

From paper handling to networking, the MX-B557F will exceed your expectations.

Simple and Intuitive MFP with Impressive Performance

When it's time to get the job done, the MX-B557F is an outstanding performer. Quickly scan documents at speeds up to **150 images per minute**. From basic copy functions to complex scan jobs, the MX-B557F can get the job done efficiently. Use one of the **Easy Modes** for fast, simple operation, with basic functions displayed in **large, clearly-labeled tiles** and keys. For more advanced features, simply touch the "Detail" key.

A "Well-connected" Device

Connecting a multifunction printer (MFP) to your wireless network and accessing it from mobile devices has never been so easy as with the MX-B557F optional wireless network interface. Print from or scan to popular cloud services such as **Microsoft OneDrive for Business, SharePoint Online, Box, Dropbox** and **Google Drive** with the Sharp **Cloud Connect** features.

Experience Secure and Convenient Printing with Synappx Go*

With **Synappx Go**, a mobile application that connects to Sharp MFPs for fast printing, your projects move with you throughout your workday, providing productivity wherever you go. Users can easily walk up to the MFP to release print jobs and print from cloud storage with convenience and privacy.



VERSATILE DESKTOP DOCUMENT SYSTEMS

The MX-B557F desktop monochrome document system delivers the performance features you need in a space-saving, compact design that you want.

workflow centric

Duplexing Single Pass Feeder (DSPF)

200-sheet dual head document feeder scans both sides of the document in a single pass at up to 150 images per minute.

Optical Character Recognition (OCR)

Built-in OCR function can convert scanned documents to text-searchable PDF format, Microsoft Office file formats and more.

Easy-to-Use Smart Touchscreen

Tablet-style menu provides quick access to features and functions.

Flexible Document Handling

Both models can feed letter size, legal size, statement size and business card size original documents.

Inner Finisher Option

Available inner finisher offers 500-sheet output with 50-sheet staple and optional hole punch.

Print from Mobile Devices

Supports popular networking technologies, enabling users to easily print files from smartphones, tablets and even notebooks.

Flexible Paper Handling

Paper drawers feed up to 8½" x 14" paper and support media up to 176 gsm (65 lb. cover). Supports up to 3,300 sheets in paper drawers and bypass tray with options.

Multi-layered Security Features

Leading-edge features provide enhanced protection of data and personal information and helps protect against network intrusions.

High Quality Printing

True 1,200 x 1,200 dpi resolution produces razor-sharp documents. PostScript® 3™ drivers offer extensive job control.

100-Sheet Manual Bypass Tray

Convenient manual bypass tray feeds envelopes, OHP film, glossy paper and labels, as well as paper up to 65 lb. cover stock.

Easily Access Popular Cloud Applications

With the available Cloud Connect feature, users gain access to Microsoft OneDrive for Business, SharePoint Online, Google Drive, Dropbox and Box.

Wired and Wireless Networking

Standard Gigabit Ethernet and optional Wi-Fi® network capabilities offer greater flexibility.²





ENHANCED COLLABORATION FOR STREAMLINED WORKFLOWS



Scan and convert documents to popular file formats seamlessly with the built-in OCR function.



Distribute, access and print documents more easily.



Powerful workflow solutions to help you work more efficiently all day.

Distribute, Access and Print Your Documents with Ease

Sharp makes it easy to go beyond traditional network scanning with standard **Email Connect** and **Cloud Connect** features. With Email Connect, scan to email is seamlessly integrated with Microsoft Exchange/Office 365® and Gmail™ user accounts, making it easy to identify the sender of scanned files. With Cloud Connect, users can easily scan to and print from **Microsoft OneDrive for Business, SharePoint Online, Google Drive, Box and Dropbox.**¹

Scan and Print Files Easily from Mobile Devices

Easily scan and print files from tablets and smartphones, popular mobile technologies such as **AirPrint®**, **Android™ printing framework** and more. When optional wireless networking is added, users can also print directly to the MFP from mobile devices without interfering with the corporate network.

Manage Different File Types with Intelligent Image Processing

Easily scan documents to popular file formats including Microsoft Word, as well as a variety of PDF formats such as Searchable PDF, TXT, RTF and others. You can also direct print these same file types from thumb drives, cloud applications and mobile devices.²

Flexible Printing Solutions Help Speed Up Your Office Productivity

Standard with **PostScript 3** and **PCL 6** compatible printing systems to help you speed through all of your output needs with accuracy. This feature allows you to easily and quickly print from Chromebook™ notebook computers, PCs and more with precision.

Adaptability with Complete Business Workflows

Embedded solutions let users load and run software solutions tailored to their specific need or industry. Properly configured, apps installed on the MFP can interact with users' unique processes, applications and data repositories, with custom icons to drive each process, if desired.



¹ May not yet be available for all models. Please contact a Sharp representative for further details.

² Some features require optional equipment and/or software/services.

TAKING CARE OF BUSINESS SAFELY AND SECURELY

Manage your device, help safeguard your data, help protect your business.

To help protect employees' privacy and intellectual property, these desktop monochrome document systems are armed with secure access features to restrict and manage copy, print and scan features to protect data and control costs. Sharp document systems also offer user authentication, which when enabled requires walk-up users to logon to the MFP. A secure print release feature can require users to enter a PIN before documents can be printed, to help avoid unclaimed print jobs. These devices are equipped with network security to defend against unauthorized access. Hard disk security helps to safeguard information stored on the device against unauthorized access and hacking.



These scalable security offerings aim to protect your intellectual property, preserve confidential information and help your business meet regulatory requirements including the Health Insurance Portability and Accountability Act (HIPAA) and the Family Educational Rights and Privacy Act (FERPA). For additional information visit: www.sharppusa.com/security.

**Some features require optional equipment and/or software.*



With **Sharp Remote Device Manager (SRDM)** administrators can take control of system features and simplify installation and management. SRDM makes it easy to view service logs, click counts, history reports and more. Event-driven service alerts help monitor the device and maximize uptime.

Also, secure remote management provides a wide range of tools and device capabilities to effectively manage a fleet of networked printers and MFPs to make sure they are always up to date.



ENVIRONMENTAL COMMITMENT



An Environmentally Responsible Approach to Product Design

Sharp is committed to environmental sustainability and corporate responsibility including planning, design, manufacturing, distribution and product end-of-life management. The MX-B557F document system adheres to Sharp's Green Products Guidelines in pursuit of these commitments. These guidelines include designing products that consume less power, using recycled materials, reducing the amount of material used in products and packaging, and labeling the type of materials used. Sharp also aims to design products that are upgradable, easy to repair, and easy to take apart for recycling.

The MX-B557F document system is ENERGY STAR® qualified and RoHS compliant to restrict the use of hazardous substances. This product also has low TEC values. Sharp MFPs are EPEAT® registered.



Toner Recycling Program

As part of our commitment to helping preserve the environment, Sharp offers our customers zero-waste-to-landfill recycling for Sharp consumables, including cartridges, bottles, toner collection containers and drum units. Sharp encourages customers to recycle their used Sharp toner cartridges in bulk by providing a pre-paid recycling kit for their return to our facility.

Environmental Leadership

As a testament to our commitment to the environment, Sharp is a multi-year winner of the ENERGY STAR annual Excellence in Energy Proficiency Product Design. Sharp is also a multi-year winner of the SmartWay® Excellence Award which recognizes companies for conserving energy and lowering greenhouse gas emissions in logistics and transportation.

For more information about Sharp's environmental leadership including information about energy efficient products, electronics or toner cartridge recycling, please visit www.sharppusa.com/environment.

MX-B557F SPECIFICATIONS

Main Specifications

MX-B557F	Base model includes 200-sheet DSPF, PCL® 6 and PostScript® 3™ compatible printing systems, network scanning, auto duplexing, 2 x 550-sheet paper drawer, 100-sheet bypass tray. Starter toner and drum included.
Type	Desktop monochrome multi-function document system
Display	10" (diagonal) color dot matrix high-resolution touchscreen
Functions	Copy, print, network print, network scan and fax
Originals	Sheets and bound documents
Max. Original Size	8½" x 14"
Output Size	Min. 5½" x 8½", Max. 8½" x 14"
Copy Speed	55 ppm
First Copy Time (in seconds)²	Platen Glass 4.0 Doc. Feeder 4.5
Magnification	25-400%
Original Feed	200-sheet DSPF
Scan Speed	Up to 150 ipm
Original Sizes	5½" x 8½", 8½" x 11", 8½" x 14", 2" x 3½" business card
Paper Capacity	Standard 1,200 Sheets/ Max. 3,300 Sheets
Paper Feed System	Standard: (2) 550-sheet paper drawers (letter/statement size) System and 100-sheet bypass tray (letter/legal/statement/envelope size). Optional: (1) 2,100-sheet paper drawers, or (2) 550-sheet paper drawers (letter/legal/statement)
Paper Weights and Types	Paper drawers and bypass tray 16-lb to 47-lb bond (Plain paper), up to 125-lb bond (card stock), 16-lb to 28-lb bond envelopes.
Duplexing	Standard automatic duplex copying (MX-B557F) and printing
CPU	1.2 GHz multi-processor design
Interface	RJ-45 10/100/1000 Base-T Ethernet, USB 2.0 (host, high-speed), opt. wireless LAN (IEEE 802.11 a/ac/b/g/n)
Memory	Standard 2 GB, max. 6 GB copy/print (shared)
Hard Disk Drive	500 GB
Copy Resolution	Up to 600 x 600 dpi
Copy Features	Copy From Size, Copy to size, Scale (25% to 400%), Darkness, Duplex, Collate, Content (Text, Text/Photo, Photo, Graphics), Advanced Duplex, Advanced Imaging (Auto Center, Background removal, Contrast, Mirror Image, Negative Image, Scan Edge to Edge, Shadow Detail, Sharpness, Color Dropout), Create Booklet, Cover Page Setup, Custom Job Build, Edge Erase, Header/ Footer, Margin Shift, Overlay, Paper Saver (2 Up, 4 Up), Separator Sheets (Between Pages, Between Copies, Between Jobs), Multi-feed Sensor (enable/disable)
Account Control	Supports user authentication via user-number, local login name/password
Output Tray	Center Exit Tray (Main): 550 sheets Inner Finisher: 500 sheets
Cloud Supported Services³	Google Drive, OneDrive for Business, SharePoint Online, Box, Dropbox
Network Protocols	TCP/IP IPv6, TCP/IP IPv4, AppleTalk™, TCP, UDP, mDNS, IGMP, Bonjour, WINS, DDNS, SNMPv3, SNMPv1, SNMPv2c, Telnet, NTP, ICMP, HTTP, DNS, ARP, HTTPs (SSL/TLS), Finger
Network and Data Security	Includes IP address filtering, protocol filtering, port control, TLS Encryption, Kerberos, AES 256-bit data encryption, data overwrite

Main Specifications (continued)

Firmware	Flash ROM with local (USB), network update capability
Management	and firmware update 1 to N
Device Setup	Web-based management/cloning with user/administrator level login
Service/Functions	Remote Front Panel, remote access to service logs and click counts
Accessibility Features	Free stop tilting front panel, adjustment of key touch sound and speed, document feeder free stop, job programs and disable screen timeout
Environmental Standards	International ENERGY STAR Program Ver. 3.0, European RoHS, Blue Angel (RAL-UZ205)
Power	AC 110-127 VAC, 60 HZ, 12 A receptacle
Power	1.21 kilowatt-hours per week
Consumption	
Weight	Approx. 147.6 lbs
Dimensions	Approx. 27.0" (w) x 27.3" (d) x 45.3" (h)

Network Printing System

PDL	Standard PCL® 6 and PostScript® 3™ compatible
Resolution	1,200 x 1,200 dpi
Print Speed	55 ppm (8½" x 11")
Print Drivers	Windows 7, Windows 8, Windows 8.1, Windows 10, Windows Server® 2008, Windows Server 2012, Windows Server 2016, Windows Server 2019, Windows PPD, MAC OSX® (including 10.6 to 10.15), all MAC PPD, Linux® PPD
Mobile Printing	AirPrint, Android printing framework
Print Features	Auto configuration, bar code font printing, confidential print, custom image registration, different cover page/last page/other page, document filing, duplex printing, electronic sorting, form overlay, image rotation, image stamp, image type, job retention, layout print, N-up printing, pamphlet style, proof print, stapling, toner save mode, tray status, user authentication, watermarks, zoom print.
Direct Printing	File Types: BMP, DCX, DOC/DOCX, GIF, JPEG, PCX, PDF, PNG, PPT/PPTX, TIFF, XLS/XLSX, XPS. Methods: FTP, SMB, Web page, Email and USB memory
Resident Fonts	89 outline fonts (PCL), 158 fonts (PS), 39 fonts (PPDS)
Operating Systems and Environments	Windows 7, Windows 8.1, Windows 8, Windows 10, Windows Server® 2008, Windows Server 2008 R2, Windows Server 2012, Windows Server 2016, Windows Server 2019, Mac OS X (10.6-10.15), UNIX®, Linux®
Printing Protocols	LPR, IPP, IPPS, PAP, Raw TCP (port 9100), FTP, POP3, HTTP, LPD and LPR for Unix

Network Scanning System

Scan Modes	Standard: Color, monochrome, grayscale
Max. Original Size	8½" x 14"
Output Modes	600 dpi, 400 dpi, 300 dpi, 200 dpi, 150 dpi, 75 dpi
Image	Monochrome Scanning: Uncompressed, G3 (MH), G4 (MR/MMR)
Compression	Color/Grayscale: JPEG (high, middle, low) Internet Fax mode: MH/MMR (option) ¹
Image Formats	JPEG, PDF, PDF/A-1a/1b, compact PDF, searchable PDF, secure PDF, TIFF, XPS

Network Scanning System (continued)

Scan Destinations	Email, Desktop, FTP, Folder (SMB), USB, Super G3 fax
Scanning Protocols	FTP, SMB, LDAP
Software	Optional third party applications

Super G3 Facsimile Function

Communication Line	Public Switched Telephone Network (PSTN)
Transmission Mode	Super G3, G3
Modem Speed	Maximum 33.6 KBPS with auto fallback
Compression	MH, MR, MMR, JBIG, JBIG2, JPEG
Scanning Method	Sheet fed or manual feed from platen glass
Transmit Resolution	600 x 600 dpi (ultra-fine), 300 x 300 dpi (super-fine), 200 x 200 dpi (fine), 200 x 100 (standard)
Transmit Speed	Approx. 2 seconds per page in Super G3 mode
Auto Dialing	Up to 1000 destinations (combined)
Group Dialing	Up to 500 groups
Inbound Fax Routing	To email address, FTP or SMB using Transmit Terminal Identification (TTI), also Document Administration function can send blind copy of transmissions and receptions to an administrator email address, FTP or SMB location.
Max. Original Length	Up to 19.5"
Programs	48 (combined)
Memory	1 GB (shared)
Features	Transaction Reports, Activity Reports, PC Fax, F-Code communication, Memory Transmission, Quick On-line Transmission, Inbound Fax Routing, Anti-junk Fax Reception, Secure Fax Release, Out-of-Paper Memory Reception, Auto Redial, Auto Exposure, Chain Dialing, Polling Reception and Duplex Reception.

Optional Equipment

MX-CS22	550-sheet Paper Feed Unit
MX-CS24	2,100-sheet Paper Feed Unit
MX-FN38	Finisher with Staple
MX-FN39	Finisher with Staple/Hole Punch
MX-MS10	4-bin Mailbox

Supplies

MX-B70T	Toner Cartridge
MX-B70DU	Drum

¹ Some features require optional equipment. See your local dealer.

² May vary depending on product configuration, machine settings and operating and/or environmental conditions.

³ May not yet be available for all models. Please contact a Sharp representative for further details.



SHARP®

SHARP ELECTRONICS CORPORATION
100 Paragon Drive, Montvale, NJ 07645
1-800-BE-SHARP • www.sharpsusa.com

Sharp, Sharp OSA, Sharpdesk, My Sharp, and all related trademarks are trademarks or registered trademarks of Sharp Corporation and/or its affiliated companies. Microsoft, Office 365, Active Directory, Windows, Windows Server, Excel, PowerPoint, OneDrive, and SharePoint are trademarks or registered trademarks of Microsoft Corporation. Android, Chrome, Gmail, Google Drive and Chromebook are trademarks or registered trademarks of Google LLC. Adobe, the Adobe logo, PostScript, and PostScript 3 are either registered trademarks or trademarks of Adobe in the United States and/or other countries. All other trademarks are the property of their respective owners. Design and specifications subject to change without notice.