

SHARP®

HIGH-SPEED MONOCHROME DOCUMENT SYSTEMS



MX-M905

The Sharp MX-M905 monochrome document systems deliver cutting-edge integration and powerful productivity.

WORLD CLASS INNOVATION WITH UNSURPASSED RELIABILITY

flexibility

The Sharp MX-M905 high-speed monochrome document systems offer advanced technology and features that will streamline your document workflow like never before. From walk-up office environments and corporate workgroups, to Central Reprographics Departments (CRDs) and copy rooms, the MX-M905 provides world-class efficiency with intuitive operation.

These high-powered document systems have been designed to handle the rigors of high volume environments with the user friendliness of a workgroup MFP. These workhorses are a perfect fit where productivity and reliability are critical and ease of use is essential.

Key Features

- **Ease of Use** – Sharp's customizable touchscreen display offers a user-friendly graphical interface with a clean design, simplified Easy Modes and integrated operation guides.
- **Integration** – Equipped with the latest version of Sharp OSA[®] technology for easy integration with network applications and cloud services, these models can unlock advanced capabilities to help you better manage your workflow.
- **Flexibility** – Offers a wide range of paper handling and finishing options to accommodate virtually any environment, including small CRDs and copy rooms.

The MX-M905 high-speed monochrome document systems offer customers powerful multitasking features enabling them to quickly execute the ever-changing workflow tasks of today's busy office environments. And with Sharp's industry-leading security features, you can rest assured that your intellectual property is protected from the first day of operation to the time of trade-in.



INTUITIVE DESIGN WITH POWERFUL FEATURES



Advanced features provide enhanced performance and improved workflow efficiency.

- Modular design provides a wide **variety of configurations** from basic high-speed copying and printing to **professional folding** and **booklet making**.
- **Scan Preview** feature offers on-the-fly page editing with easy **fingertip navigation**.
- **250-sheet Duplex Single Pass Feeder** (DSPF) scans documents at up to 240 images per minute.
- **Triple air-feed paper** input option offers **high reliability** and is virtually maintenance-free.

EASY-TO-USE

ENHANCED INTEGRATION

WIRELESS CAPABILITY

VERSATILE PRODUCTIVITY



- Large 10.1" (diagonally measured) **customizable touchscreen display** with a clean design enables easy access to features and functions when setting up jobs.
- **Offers 8,500-sheet maximum paper capacity** and media support up to 110 lb. cover stock (300 gsm) with optional paper feed units.
- Standard high-performance print controller with included **PCL® 6** and **true Adobe® PostScript® 3™** printing languages.
- True **1200 x 1200 dpi** printing provides beautiful images and enhanced clarity for fine details such as small text and graphics.
- Easily **access popular cloud applications**, including Microsoft® OneDrive® for Business, SharePoint® Online and Google Drive™ with Sharp's Cloud Connect feature.
- With **Email Connect**, scan to email is seamlessly integrated with Microsoft Exchange and Gmail™.
- Standard **Job Management** features make it easy to print on-demand as well as view jobs, retain jobs, combine jobs, select print settings and more.
- Supports the **Sharp OSA development platform**, enabling businesses to easily integrate with network applications and cloud services.
- Convenient **End-of-Lease feature** can erase all files on the hard disk drive, all user data, job status data and address book data at trade-in time.



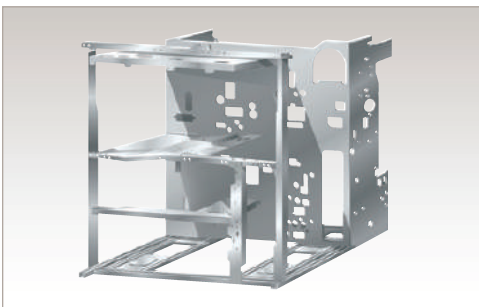
SIMPLICITY HELPS PROVIDE ULTIMATE PRODUCTIVITY



A high-resolution customizable touchscreen helps you navigate smoothly through advanced MFP functions.



Built-in wireless network interface offers convenient scanning and printing from mobile devices.



A highly-rigid frame design helps better protect and isolate critical machine components. This also ensures increased reliability and durability in order to withstand heavy use from high-speed and high-volume output.

From intuitive operation to unsurpassed productivity, the MX-M905 is equipped to provide optimum results.

Simple and Intuitive Operation

From the most basic of copy functions, to the most complex scan jobs, the MX-M905 will perform them with ease and efficiency. Use one of the **Easy Modes** for fast, simple operation, with basic functions displayed in **large, clearly-labeled tiles** and keys. And for more advanced features, just touch the “Details” button – it’s that easy.

A “Well-connected” Device

Connecting a multifunction printer (MFP) to your wireless network and accessing it from mobile devices has never been so easy with the MX-M905 standard wireless networking features. Print from or scan to popular cloud services such as **Microsoft OneDrive for Business, SharePoint Online, and Google Drive** with Sharp’s **Cloud Connect** feature. **Single Sign-on (SSO)** support for accessing these services makes scan-to-folder and scan-to-email operations simpler than ever. Even printing from your desktop is made easier with Sharp’s **Serverless Print Release** function. **Easily send a job to one device, and print it on another** when and where it’s most convenient for you.

Intuitive Job Management

Sharp’s Document Filing System provides a 1TB hard disk drive to store frequently used files. With the **thumbnail preview mode, stored jobs can be located and retrieved quickly**. Easily reprint retained jobs, combine jobs, repaginate jobs, edit pages and more.

Robust Paper Handling For Busy High-Volume Environments

Sharp understands the importance of productivity – that’s why the new MX-M905 high-speed monochrome document systems offer up to **8,500-sheet paper capacity** and support media types up to **110 lb. cover (300 gsm)** with paper input options. An available 5,000-sheet large capacity paper input option with air-feed technology, helps maximize reliability and minimize down time. A feature typically found on production devices and printing presses, the triple air-feed system directs air flow with precision accuracy to ensure proper paper handling. And to handle those large originals, a standard 250-sheet dual head document feeder can scan up to 240 images per minute.



Triple air-feed LCT paper trays maximize reliability and minimize downtime. Pneumatic sensors maintain consistent air flow.

FLEXIBLE OPTIONS THAT ARE ESSENTIAL FOR BUSINESS



Versatile and Customizable To Fit Your Needs

The MX-M905 high-speed monochrome document systems offer flexible paper handling and finishing options to accommodate virtually any environment. *



MX-M905 shown with 3,500-sheet large capacity cassette, 50-sheet Staple/Saddle Finisher and 100-sheet bypass tray.

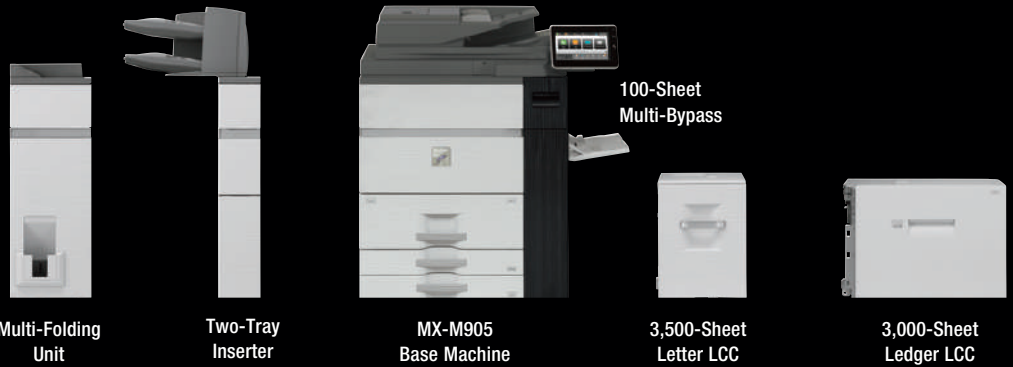


MX-M905 shown with Curl Correction Unit, Inserter, Multi-Folding Unit, 100-sheet Staple Finisher, 5,000-sheet large capacity trays, 500-sheet multi-bypass tray and status indicator.

Modular Options Make It Easy To Build the System of Your Choice

Options for the MX-M905 enable businesses to choose from several high performance finishing systems that offer up to 100-sheet stapling, professional saddle stitch booklet making and three-hole punching. More advanced configurations include a professional punching system, a two-tray inserter, a multi-folding unit and a trimmer unit.

CUSTOMIZE



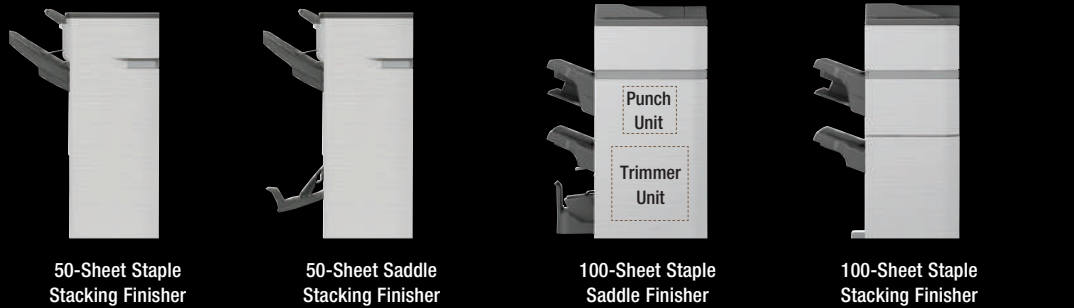
Multi-Folding Unit

Two-Tray Inserter

MX-M905 Base Machine

3,500-Sheet Letter LCC

3,000-Sheet Ledger LCC



50-Sheet Staple Stacking Finisher

50-Sheet Saddle Stacking Finisher

100-Sheet Staple Saddle Finisher

100-Sheet Staple Stacking Finisher



GBC Smart Punch Pro™

5,000-Sheet Air-Feed LCT



500-Sheet Multi-Bypass Tray

*Some options not available in all configurations. See your local dealer.



ENHANCED COLLABORATION FOR STREAMLINED WORKFLOWS



Scan and convert documents to popular file formats seamlessly with built-in OCR function.



Distribute, access and print documents more easily.



With Serverless Print Release technology you can securely print a job and release it from any of six supported models.

Powerful document workflow solutions help you work more efficiently.

Simplify Managing Different File Types with Intelligent Image Processing

Easily and quickly scan and **convert documents** to popular file formats including **Microsoft Word, PowerPoint®** and **Excel®**, as well as a variety of **PDF formats** such as Searchable PDF, Encrypted PDF, Compact PDF and others. You can also direct print these same file types from thumb drives, cloud applications and mobile devices. This function is enabled via **DirectOffice™** technology. With this much flexibility, you can speed through your workflow tasks faster than ever!

Distribute, Access and Print Your Documents with Ease

Sharp makes it easy to send documents to the destinations you need, and goes beyond traditional network scanning with standard **Email Connect** and **Cloud Connect** features. With Email Connect, scan to email is seamlessly integrated with Microsoft Exchange and Gmail™. With Cloud Connect, you can easily scan to and print from **Microsoft OneDrive for Business, SharePoint Online** and **Google Drive** without additional middleware.

Scan and Print Files Easily from Mobile Devices

These monochrome document systems also make it easy to scan and print files from tablets and smart phones using **Sharpdesk® Mobile**, a free downloadable app available for most common mobile devices.¹ These models also support popular mobile technologies such as **AirPrint®, Android™ printing framework** and **Google Cloud Print™**. You can print locally from your device or download files from supported cloud applications. Since the MX-M905 can connect to mobile devices through a **point-to-point wireless connection**, there is no interference with your corporate network.

Flexible Printing Solutions Help Speed Up Your Office Productivity

The MX-M905 comes standard with **true Adobe PostScript 3** and **PCL 6** printing systems to help you speed through all of your output needs with accuracy. To help streamline your jobs, these powerful performers include **Serverless Print Release technology**, enabling you to securely print a job and release it from up to six compatible models on your network. And with Google Cloud Print web printing service, you can print from Chromebook™ notebook computers, PCs and more from virtually anywhere.

Simplify Complex Business Workflows

Sharp OSA technology can help your business leverage the power of your network applications, back-end systems and cloud services.² Easily automate complex processes and help eliminate redundant tasks. Create your own custom integrations or take advantage of the growing portfolio of Sharp OSA applications available from Sharp Partner Program members.



¹ Go to www.sharpsusa.com for a list of supported devices and operating systems.

² Some features require optional equipment and/or software/services.

TAKING CARE OF BUSINESS SAFELY AND SECURELY

Manage your device, help safeguard your data, help protect your business.

Businesses require that the devices on their networks are properly managed and closely monitored to ensure their data remains uncompromised. To help achieve this, the MX-M905 offers powerful device management utilities, web-based customer training and advanced, **multi-layered security features**.

With the **Sharp Remote Device Manager (SRDM)***, administrators can take control of system features and simplify installation and management. SRDM makes it easy to view service logs, click counts, history reports and more. Its event-driven service alerts help you monitor the device and maximize uptime. The **Remote Front Panel** feature allows administrators to view and control the machine's LCD panel from a PC to troubleshoot issues and train operators remotely. Sharp also offers both **built-in** and additional **auditing hardware and software to control, access and track usage** of each device on the network.* And with **My Sharp™**, you get a dedicated training website customized to your model and configuration to help you understand and utilize all of the advanced features of your Sharp product, including those for security.



To help protect employees' privacy and intellectual property, the MX-M905 is armed with a variety of security measures, including features such as **data encryption, data overwrite and data erase**. Multiple **security protocols** help restrict access to the device while in operation, and a convenient **End-of-Lease** feature overwrites all data at time of trade-in. **Authority Groups** help manage and restrict specific copying, printing, scanning and fax features to safeguard data and control costs. The **Admin Audit Log** feature allows IT administrators to track activity on the device. **Confidential Printing** and **Secure Fax Release** help ensure that sensitive documents are kept safe by requiring users to enter a PIN code in order to print them. For advanced security, these models support Active Directory user authentication and secure single sign-on to network folders and emails. For an optimized workflow experience, ID card authentication can also be activated.



These scalable security offerings aim to **protect your intellectual property**, preserve confidential information and help your business meet regulatory requirements including the Health Insurance Portability and Accountability Act (HIPAA) and the Family Educational Rights and Privacy Act (FERPA). For additional information visit: www.sharppusa.com/security.

**Some features require optional equipment and/or software.*



ENVIRONMENTAL COMMITMENT



An Environmentally Responsible Approach to Product Design

Sharp is committed to environmental sustainability and corporate responsibility including planning, design, manufacturing, distribution and product end-of-life management. Sharp adheres to Green Products Guidelines in pursuit of these commitments. These guidelines include designing products that consume less power, using recycled materials, reducing the amount of material used in products and packaging, and labeling the type of materials used. Sharp also aims to design products that are upgradable, easy to repair and easy to take apart for recycling.

The MX-M905 document systems are ENERGY STAR® qualified and RoHS compliant to restrict the use of hazardous substances. Sharp MFPs are EPEAT® registered.



Toner Recycling Program

As part of our commitment to helping preserve the environment, Sharp offers our customers zero-waste-to-landfill recycling for Sharp consumables, including cartridges, bottles, toner collection containers and drum units. Sharp encourages customers to recycle their used Sharp toner cartridges in bulk by providing a pre-paid recycling kit for their return to our facility.

Environmental Leadership

As a testament to our commitment to the environment, Sharp is a multi-year winner of the ENERGY STAR annual Excellence in Energy Proficiency Product Design. Sharp is also a multi-year winner of the SmartWay® Excellence Award which recognizes companies for conserving energy and lowering greenhouse gas emissions in logistics and transportation.

For more information about Sharp's environmental leadership including information about energy efficient products, electronics or toner cartridge recycling, please visit www.sharppusa.com/environment.

MX-M905 SPECIFICATIONS

Main Specifications

MX-M905	Base models include LCD, 250-sheet DSPF, 3,100-sheet paper capacity, 1 TB hard disk drive, PCL6®/Adobe® PostScript® 3™ network printing, color network scanning, pull out keyboard, application communication module and external accounting module
Type	Console, Monochrome multi-function digital document system
Display	10.1" (diagonally measured) color dot matrix high-resolution touch panel tilting display. 1024 x 600 (WSVGA)
Functions	Copy, print, network print, network scan and document filing ¹
Copy System	Dry electrostatic transfer/Dual component developer/Magnetic brush development/OPC/white LED exposure/heat roller fusing
Originals	Sheets and bound documents
Max. Original Size	11" x 17"
Copy Size	Min. 5½" x 8½", Max. 12" x 18"
Copy Speed	90 ppm (8½" x 11")
Multiple Copy	Max. 9,999 copies
First Copy Time (in Seconds)²	Platen Glass 4.0 DSPF 6.3
Warm Up Time	210 seconds ²
Magnification	25% to 400% in 1% increments (with document feeder 25%-200%)
Original Feed	250-sheet DSPF
Scan Speed	Up to 240 ipm ² (Monochrome or Color)
Original Sizes	5½" x 8½", 8½" x 11", 8½" x 11" R, 8½" x 14", 11" x 17"
Paper Capacity	Standard: 3,100 Sheets/Maximum: 8,500 Sheets
Paper Feed System	Standard: Tandem Tray 1 - 1,200 sheets (letter size), Tandem Tray 2 - 800 sheets (letter size), Trays 3/4 - 500 sheets ea. (letter/legal/ledger/statement/12" x 18"). Multi-bypass Tray (for machine) - 100 sheets (letter/legal/ ledger/statement/ 12" x 18"), optional: Multi-bypass (for LCT) - 500 sheets (letter/legal/ ledger/statement/12" x 18"), LCT (2-Drawer) - 2,500-sheets each drawer (letter/legal/ledger/12" x 18"), Letter LCC - 3,500 sheets (letter), Ledger LCC - 3,000 sheets.
Paper Weights and Types	Tandem Trays - 16-28 lb. bond, Trays 3/4 - 16 lb. bond to 100 lb. Bristol, Multi-bypass Tray (for machine) - 15 lb. bond to 110 lb. cover, Multi-bypass Tray (for LCT) - 15 lb. bond to 100 lb. Bristol, LCT (2-drawer) - 15 lb. bond to 110 lb. cover, Letter LCC - 16 lb. bond to 110 lb. cover, Ledger LCC - 16 lb. bond to 110 lb. cover. ² Supported paper types include thin, plain, recycled, color, letter head, pre-printed and pre-punched and glossy.
Duplexing	Standard automatic duplex copying and printing
CPU	Up to 1.91 GHz Multi-Processor Controller
Interface	RJ-45 Ethernet 10/100/1000 Base-T, USB 2.0 (2 host ports, front and rear), USB 2.0 (1 device), wireless 802.11 a/b/g/n
Memory	Standard 6 GB
Hard Disk Drive	1 TB
Copy Resolution	Scan: 1200 x 1200 dpi / 600 x 600 dpi
Copy Modes	Monochrome/Grayscale
Exposure Control	Modes: Text, Text/Printed-Photo, Printed-Photo, Text Photo, Photo, Map, Pale-Color. Settings: Auto or step manual
Halftone	256 gradations/2 levels (monochrome)
Copy Features	Scan-Once Print-Many, electronic sorting, offset-stacking, Auto Paper Selection (APS), Auto Magnification Selection (AMS), Auto Tray Switching (ATS), black-white reversal, blank page skip, book copy, book divide, card shot, center erase, centering, cover pages, dual page copy, edge erase, image edit, image preview, insert pages, job build, job programs, margin shift, mirror image, mixed size original, multi-page enlargement, original count, pamphlet style, proof copy, repeat layout, reserve copy, rotated copy, stamp, stamp custom image, suppress background, tab copy, tab-paper insertion, tandem copy, toner save mode, transparency inserts, watermark, 2-in-1 / 4-in-1 / 8-in-1 multi shot
Account Control	Up to 1,000 users. Supports user authentication via local, LDAP, and Active Directory® for copy, print, scan and document management
Cloud Supported Services	Google Cloud Print, Google Drive, OneDrive for Business, SharePoint Online
Network Protocols	TCP/IP (IPv4, IPv6, IPsec), HTTP/HTTPS, IPP/IPP-SSL, FTP/FTPS, SNMPv3, SMTP/SMTP-SSL, POP3/POP3-SSL, LDAP/LDAP-SSL, 802.1x for Windows and Unix.
Network and Data Security	Includes IP/MAC address filtering, protocol filtering, port control, TLS Encryption, Kerberos, Active Directory integration, data encryption, End-of-Lease, data overwrite (up to 10x), DoD 5220.22-M
Firmware Management	Flash ROM with local (USB), network update capability and firmware update 1 to N with SRDM (Sharp Remote Device Management)

Main Specifications (continued)

Device Setup	Web-based management with user/administrator level login, cloning (1 to N) with SRDM and remote front panel access
Service/Functions	Remote front panel, remote access to service logs and click counts
Accessibility Features	Free stop tilting front panel, adjustment of key touch sound and speed, concave key, document feeder free stop, job programs, remote front panel, universal grip for paper trays, and disable screen timeout
Environmental Standards	International ENERGY STAR Program Ver. 2.0, Law on Promoting Green Purchasing, European RoHS (Restriction of Hazardous Substances)
Power Source	AC 208-240 VAC, 60 HZ, 20 A Receptacle
Power Consumption	Maximum: 3.55 kW or less
Weight	Approx. 666 lbs.
Dimensions	Approx. 42¾" (w) x 31¼" (d) x 48¾" (h)
Network Printing System	
PDL	PCL6 compatible, True Adobe PostScript 3
Resolution	1200 x 1200 dpi
Print Speed	90 pages per minute (8½" x 11")
Print Drivers	Windows Vista, Windows 7, Windows 8, Windows 8.1, Windows 10, Windows Server® 2008, Windows Server 2008 R2, Windows Server 2012, Windows Server 2012 R2, Windows Server 2016, Windows PPD, MAC OS X® (including 10.6 to 10.12), all MAC PPD, Linux® PPD
Mobile Printing	AirPrint, Android printing framework (Sharp Print Service Plugin), Sharpdesk Mobile
Print Features	Auto configuration, serverless print release, bar code font printing, carbon copy print, chapter inserts, color adjustment settings, color mode, confidential print, continuous printing, custom image registration, different cover page/last page/ other page, document control, document filing, duplex printing, electronic sorting, folding, form overlay, hidden pattern print, image rotation, image stamp, image type, job bypass print, job retention, layout print, margin shift, multiple pamphlet, network tandem print, N-up printing, offset stacking, page interleave, pamphlet style, poster print, proof print, print and send, punching, stapling, tab paper print, tab printing, toner save mode, transparency inserts, tray status, user authentication, watermarks, zoom print
Direct Printing	File Types: TIFF, JPEG, PCL, PRN, TXT, PDF, Encrypted PDF, Compressed PDF/A1, PostScript, DOCX, XLSX, PPTX, and PNG. Methods: FTP, Web page, Email, Network Folder and USB
Resident Fonts	80 outline fonts (PCL), 139 fonts (PS)
Interface	RJ-45 Ethernet 10/100/1000 Base-T, USB 2.0
Operating Systems and Environments	Windows Vista, Windows 7, Windows 8, Windows 8.1, Windows 10, Windows Server® 2008, Windows Server 2008 R2, Windows Server 2012, Windows Server 2012 R2, Mac OS X 10.4-10.11, UNIX®, Linux, Citrix® (XenApp 5.0-7.6), Windows Remote Desktop Services, SAP device types ¹
Printing Protocols	LPR, IPP, IPPS, PAP, Raw TCP (port 9100), FTP, POP3, HTTP, Novell Pserver/Rprinter, LPD and LPR for Unix
Network Scanning System	
Scan Modes	Standard: Color, monochrome, grayscale
Max. Original Size	11" x 17"
Optical Resolution	600 dpi
Output Modes	600 dpi, 400 dpi, 300 dpi, 200 dpi, 100 dpi
Image Formats	Monochrome: TIFF, PDF, Encrypted PDF, Searchable PDF, DOCX, XLSX, PPTX, TXT and RTF. Color/Grayscale: Color TIFF, JPEG, PDF, Encrypted PDF ¹ , PDF/A ¹ , Compressed PDF ¹ , Searchable PDF, DOCX, XLSX, PPTX, TXT and RTF.
Image Compression	Monochrome Scanning: Uncompressed, G3 (MH), G4 (MR/MMR)
Scan Destinations	Color/Grayscale: JPEG (high, middle, low) Email, Desktop, FTP, Folder (SMB), USB
One-touch Destinations	Up to 2,000 (combined scan destinations)
Group Destinations	Up to 500
Programs	48 (combined)
Max. Jobs	Up to 100
Enhanced Email Integration	Standard Gmail connector, standard Exchange connector (on-premise)
Sharp OSA Platform	Application Communication Module (MX-AMX2) and External Accounting Module (MX-AMX3) standard

4K 100-Sheet Stapler/Finisher (MX-FN21: option)

Type	4,000-sheet console stapler finisher (100-sheet stapling)
Output Trays	Upper tray: Moving offset tray (up to 1,500 letter size sheets) Middle tray: 250 sheets (letter size, non-stapled) Lower tray: Moving offset tray (up to 2,500 letter size sheets)
Stapling Capacity	Up to 100 sheets (letter/statement)
Stapling Media	Plain paper, letter/legal/ledger size or mixed
Stapling Positions	1 front, 1 rear, or 2 point stitching
Hole Punching	Optional three-hole punch unit MX-PN13B
Power Source	120 VAC, 60 HZ, 15 A Receptacle
Power	200w/350w with MX-FD10
Consumption	
Weight	Approx.: 134.5 lbs.
Dimensions	Approx.: 35¼" (w) x 30" (d) x 41" (h) (with tray extended)

4K 100-Sheet Stapler/Saddle Stitch Finisher (MX-FN22: option)

Type	4,000-sheet console stapler finisher (100-sheet stapling)
Output Trays	Upper tray: Moving offset tray (up to 1,500 letter size sheets) Middle tray: 250 sheets (letter size, non-stapled) Lower tray: Moving offset tray (up to 2,500 letter size sheets)
Stapling Capacity	Up to 100 sheets (letter/statement)
Stapling Media	Plain paper, letter/legal/ledger size or mixed
Stapling Positions	1 front, 1 rear, or 2 point stitching
Saddle Stitch	Center stitch/center fold (2 staples) letter/legal/ledger paper sizes
Saddle Stitch Max. Sets	Up to 5 sets (16-20 sheets)/10 sets (11-15 sheets per set)/15 sets (6-10 sheets per set)/25 sets (1-5 sheets per set)
Hole Punching	Optional three-hole punch unit MX-PN13B
Power Source	120 VAC, 60 HZ, 15 A Receptacle
Power	200w/350w with MX-FD10
Consumption	
Weight	Approx. 134.5 lbs.
Dimensions	Approx. 35¼" (w) x 30" (d) x 41" (h) (with tray extended)

Optional Equipment

MX-CF11	Insertor
MX-FD10	Multi-Folding Unit
MX-LC12	3,500-sheet Large Capacity Cassette (letter) ¹
MX-LCX3N	3,000-sheet Large Capacity Cassette (ledger) ¹
MX-LC13N	5,000-sheet Large Capacity 2-Drawer Air Feed Tray (ledger) ¹
MX-MF11	500-sheet Multi-bypass Tray (for MX-LC13)
MX-FN21	4K Stacking 100-Sheet Staple Finisher ¹
MX-FN22	4K Stacking 100-Sheet Staple/Saddle Stitch Finisher ¹
MX-FN24	3K Stacking 50-Sheet Staple Finisher ¹
MX-FN25	3K Stacking 50-Sheet Staple/Saddle Stitch Finisher ¹
MX-RB16	Large capacity Tray mounting kit
MX-RB18	Curly Correction Unit ¹
MX-RB13	Relay Unit
MX-TM10	Trimmer Unit ¹
MX-PN13B	3-Hole Punch Unit (for MX-FN21/FN22)
MX-PNX4B	3-Hole Punch Unit (for MX-FN24/FN25)
MX-SCX1	Staple Cartridge (for MX-FN22)
MX-SCX2	Staple Cartridge (for MX-FN21/FN22)
AR-SG2	Staple Cartridge (for MX-FN24/FN25)
MX-SCX3	Staple Cartridge (for MX-FN25)
MX-SL10N	Status Indicator
AR-SU1	Stamp Unit (requires AR-SV1 Stamp Cartridge)
AR-SV1	Stamp Cartridge (required for AR-SU1)
MX-PF10	Bar Code Font Kit
MX-FX15	Fax Expansion Kit
MX-FWX1	Internet Fax Kit
MX-FR54U	Commercial Data Security Kit (not available at time of launch)
MX-GBCX2	GBC SmartPunch Pro

Supplies

MX-900NT	Toner Cartridge
MX-900NV	Developer
MX-850HB	Waste Toner Bottle

¹ Some features require optional equipment. See your local dealer.

² Specification may vary depending on product configuration, machine settings and operating conditions.



SHARP ELECTRONICS CORPORATION
100 Paragon Drive, Montvale, NJ 07645
1-800-BE-SHARP • www.sharpsusa.com

Design and specifications subject to change without notice. Sharp, Sharp OSA, Sharpdesk, My Sharp and all related trademarks are trademarks or registered trademarks of Sharp Corporation and/or its affiliated companies. Windows, Windows Server, Excel, PowerPoint, OneDrive and SharePoint are registered trademarks of Microsoft Corporation. Android, Google Drive, Google Cloud Print and Chromebook are registered trademarks of Google Inc. AirPrint is a registered trademark of Apple Inc. Adobe and PostScript are registered trademarks of Adobe Systems Inc. DirectOffice is a trademark of CSR Imaging US, LP, registered in the United States and other countries, used with permission. All other trademarks are the property of their respective owners.