

TOSHIBA

Leading Innovation >>>

- > Black & White MFP
- > Up to 30 PPM
- > Small/Med. Workgroup
- > Copy, Print, Scan, Fax
- > Secure MFP
- > EPEAT Registered



e-STUDIO™ 207L/257/307



Exceed expectations in powerful ways.

The e-STUDIO307 series from Toshiba has been designed to bring small and medium workgroups the same power and performance typically reserved for larger businesses. It's easy to use, allowing you to create professional looking documents without extensive training or experience.

Expand your possibilities.

Toshiba has taken the performance and functionality of larger monochrome MFPs and designed a smaller, more compact version. Introducing the e-STUDIO307 series. In addition to copying, faxing, printing and color scanning, it handles even the most challenging jobs quickly and easily. You'll be impressed with handy features like a walk-up USB printing port and a crisp 9" color touch screen that gives you instant access to all sorts of other possibilities.



Get more done in less time with advantages like USB printing and paper that can be added midstream.

Less work and more flow.

Start with a 20-second warm-up and a first copy out time of 4.7 seconds. Output is produced at the speed that fits your needs – from 20 to 30 pages per minute. Image quality is outstanding at 2,400 x 600 dpi. Need a lot of copies? You can opt for up to a 3,200-sheet capacity. And, its modular design allows you to get the most paper in the sizes you need, with a tandem LCF or 4-drawer configuration.



e-STUDIO™ 207L/257/307

It's the business of helping businesses.

At Toshiba, we realize the challenges that businesses face every day. The new e-STUDIO307 series is the perfect solution for small to medium size businesses looking for a high quality, fully functional MFP to help them meet those challenges.

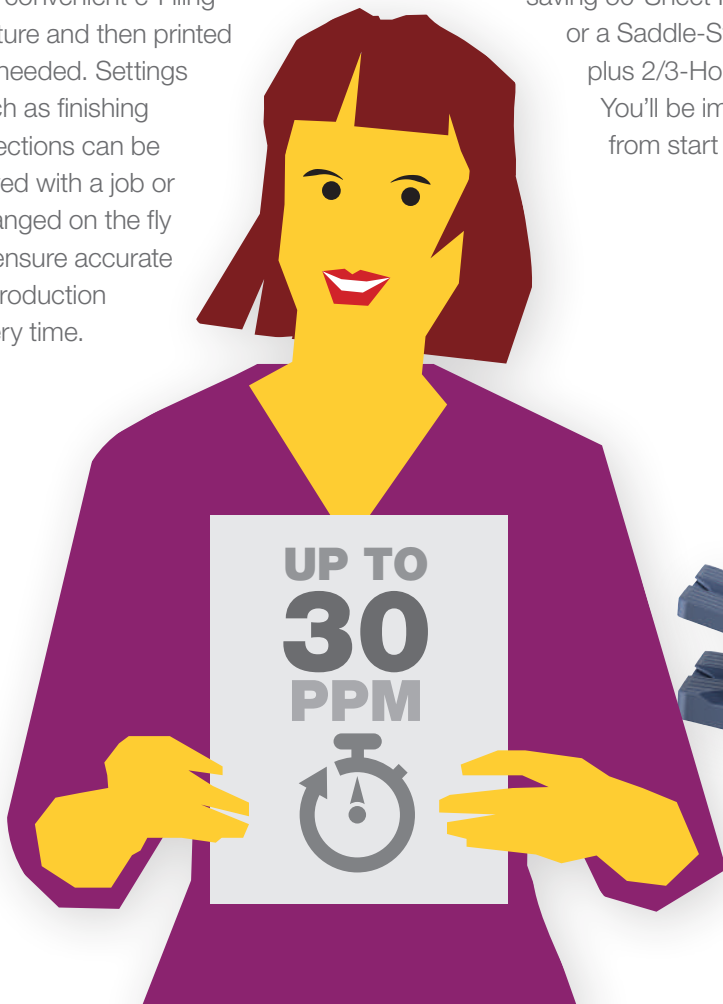
Relax and let technology handle it.

Because the e-STUDIO307 series has incorporated the latest e-BRIDGE technology, business applications and vendor solutions are easily integrated. With 320GB of safe and secure storage, frequently used documents can be stored right on the MFP by using the convenient e-Filing feature and then printed as needed. Settings such as finishing selections can be saved with a job or changed on the fly to ensure accurate reproduction every time.

User friendly and eager to please.

The e-STUDIO307 series can handle jobs with ease, even large volumes of various types of documents. Take advantage of up to a 120,000 monthly copy volume and a 36,600 toner yield at 6%. Also, there are several finisher options including a space saving 50-Sheet Inner Finisher or a Saddle-Stitch Finisher, plus 2/3-Hole Punch. You'll be impressed from start to finish.

- > Superb Image Quality
- > e-BRIDGE Technology
- > Universal Print Driver
- > Fast First Copy Out Times
- > Up to 3,200 Capacity
- > Service Module Design
- > Saddle Stitch Finisher
- > 2/3 Hole Punch



TOSHIBA

Leading Innovation >>>

Protection for your business and the planet.

As the need for tougher data security and improved environmental protection continue to increase, Toshiba is prepared to answer the call. Much of our R&D is spent in these areas. That's because your concerns are our concerns.



Data security and peace of mind.

Protecting your data means you're protecting your entire business. Fortunately, the e-STUDIO307 series has been designed to preserve the integrity and confidentiality of all your data. A new 320GB FIPS 140-2 Validated Self-Encrypting Drive (SED) with Data Overwrite are standard. An IPsec option to encrypt data being sent to or from the MFP, and Hard Copy Security are also available to keep your data right where it belongs.

Eco-consciousness.

At Toshiba, we realize we're responsible for helping our planet thrive. Whether it's our products, our company, or worthwhile environmental projects in your communities, we put green into action. The Toshiba e-STUDIO307 series has a low power sleep mode that meets the stringent requirements of Energy Star Tier 2. It is also RoHS compliant, and uses recycled plastics. Because of this and other eco-friendly features, the Toshiba e-STUDIO307 series is EPEAT Registered in the greener electronics global registry developed to help purchasers choose products that reduce environmental impact. Together we can reduce, reuse and recycle in meaningful ways.

There's a configuration that is just right for every business need. And all of them are secure and EPEAT Registered.





Small and compact yet feature rich.

The Toshiba e-STUDIO307 series has features and benefits galore. You'll be impressed to find so much in such a compact footprint.



Efficient printing

Choose your speed at 20, 25, or 30 pages per minute. Also, first copy out times are as fast as 4.7 seconds.



Broad paper handling

Use up to a 3,200-sheet paper capacity and up to 110 lb index. You can select from a variety of paper sizes with 4 drawers or a tandem LCF.



Ease of use

A large 9" tilting touch panel is easy to read and use. A context sensitive help button that will provide you with whatever instructions you might need. Scanning or printing can be done on the go using a convenient USB port.



Reliability

The monthly copy volume goes up to 120,000 with a toner yield of 36,600 at 6% coverage and toner that can be changed on the fly. A compact service module design allows for surprisingly faster and easier periodic maintenance.



Connectivity and functionality

PCL6, PostScript3, and XPS as well as a Universal Printer Driver means you only need one driver across your entire fleet.



Innovative technology

Gigabit Ethernet support, e-filing for frequently reprinted jobs and an automatic OCR option for expert scanning are just a few of our leading innovations.



Latest e-BRIDGE platform

Toshiba's proprietary platform improves connectivity, security and fleet management. Take advantage of access to third-party solutions like PaperCut, Docuware and more.



Advanced finishing options

There is a convenient space saving 50-Sheet Inner Finisher, Saddle-Stitch Finisher and a 2/3-Hole Punch.



Expert security

A 320GB FIPS 140-2 Validated Self-Encrypting Drive (SED) with Automatic Data Invalidation and Data Overwrite come standard. Also, an IPsec option encrypts data, and Hard Copy Security prevents the copying of sensitive documents.



Environmentally responsible

The e-STUDIO307 series is RoHS Compliant, Energy Star Tier 2 rated and EPEAT Registered (as part of the definitive global registry for greener electronics).



- > Black & White MFP
- > Up to 30 PPM
- > Small/Medium Workgroup
- > Copy, Print, Scan, Fax
- > Secure MFP
- > EPEAT Registered

Specifications

| | |
|-------------------------|---|
| Copying Process/Type | IEPM (Dry Process)/Laser Technology |
| Original Reading Method | CCD Line Sensor |
| Copy/Print Resolution | 2400 x 600 dpi (with Smoothing) |
| Copy/Print Speed | 20/25/30 PPM |
| Warm-Up Time | Approx. 20 Seconds |
| First Copy Time | 4.7 Seconds |
| Duty Cycle | 80K/100K/120K |
| Multiple Copying | Up to 999 Copies |
| Standard Paper Supply | 2 x 550-Sheet, 100-Sheet Stack Feed Bypass |
| Maximum Paper Supply | Up to 3,200 Sheets |
| Acceptable Paper Size | Cassette: Statement-R to Ledger (17-28 lb), Bypass: Statement-R to Ledger (17-110 lb), LCF: Letter (17-28 lb) |
| Memory | 2GB RAM, 320 GB FIPS 140-2 SED |
| Reduction/Enlargement | 25% to 400% |
| Bypass Tray | 100-Sheet Stack Feed Bypass |
| Control Panel | 9" Wide VGA Color Touch-Screen |
| Dimensions | Approx. 23" x 23" x 30" (W x D x H) |
| Weight | Approx. 132 lb |
| Power Supply | 115 Volts, 15 Amps |
| Power Consumption | Maximum 1.5kW |
| PM Cycle | 80K/100K/120K |
| Black Toner Yield | 36.6K Impressions @ 6% |

e-BRIDGE Print Specifications

| | |
|-------------------|---|
| PDL Support | PCL6, PostScript 3, XPS |
| Operating Systems | Windows Server 2003, 2008, 2012, Vista SP2, 7, 8, NetWare 6.5, Citrix, Macintosh 10.4-10.9, Solaris v10, 11, HP-UX V11.iv3, AIX 7.x, Linux, SCO |
| Protocol Support | Windows Printing (SMB1.0/2.0), LPR/LPD, IPP (Ver.1.1) w/Authentication, NetWare P-SERVER w/NDS, Binary, Novell NDPS Gateway, or LPD w/ iPrint, Apple Talk PAP or EtherTalk, Port 9100 (bi-directional), WS Print, FTP |
| Drivers | Windows Server 2003, 2008, 2012, Vista SP2, 7, 8, Macintosh OS 10.4-10.9 |
| Connectivity | 10/100/1000BaseTX Ethernet, 802.11b/g/n, Wireless LAN, USB |
| Wireless Device | AirPrint, e-BRIDGE Print & Capture Application on iOS and Android (Available via Apple App Store or Google Play) |
| Device Management | Top Access, eFMS 6.0 (e-BRIDGE Fleet Management Software) |
| Certification | Windows 7, 8, 8.1, 2008R2, 2012, 2012 R2, WHQL, Novell, Citrix |

Scan Specifications

| | |
|-----------------|--|
| Scan Speed | 57 SPM LT-Size @ 300 dpi, 45 SPM LT-Size @ 600 dpi (When Copying), 43 SPM LT-Size @ 300 dpi (Color Scanning) |
| Scan Resolution | Up to 600 dpi |
| File Format | TIFF, PDF, Slim PDF, JPEG, XPS, MS Word, MS Excel, Searchable PDF w/Adv. Scanning Option |

Facsimile Specifications

| | |
|---------------------|--|
| Compatibility | Super G3, G3 |
| Data Compression | MH/MR/MMR/JBIG |
| Transmission Speed | Approx. 3 Seconds Per Page |
| Fax Modem Speed | 33.6 Kbps |
| Fax Memory | Transmission and Reception 1GB (HDD), Backup Permanent (HDD) |
| Memory Transmission | 100 Jobs, 2,000 Destinations Max, 400 Destinations/Job |
| Scan Speed | 0.7 Seconds Per Page, 50 Scans Per Minute |
| Other Fax Functions | Internet Fax, Network Fax |

e-Filing Specifications

| | |
|-------------------|--|
| Operation Method | Color Touch Screen Control Panel or Client PC |
| Number of Boxes | 1 Public Box, 200 Private User Boxes |
| Capacity of Boxes | 100 Folder Per Box, 400 Documents Per Folder, 1000 Pages Per Documents |

Security (Standard)

| | |
|-----------------|---|
| Data Encryption | 256 Bit AES |
| HDD Overwrite | Meets Department of Defense (DoD) Standard 5220.22M |
| Authentication | LDAP, SMTP, Windows Server Domain |

Accessories (Options)

| | |
|---------------------------------------|----------|
| Input Options | |
| 100-Sheet RADF | MR3028 |
| Platen Cover | KA1640PC |
| Additional Paper Options | |
| 550-Sheet Paper Feed Pedestal | KD1025 |
| 2,000-Sheet Large Capacity Feeder | KD1026 |
| 550-Sheet Paper Feed Unit | MY1033 |
| Finishing Options | |
| Job Separator | MJ5004 |
| Work Tray | KK4550 |
| Bridge Kit for Finisher | KN2520N |
| 50-Sheet Inner Finisher | MJ1032N |
| Saddle-Stitch Finisher (Low Capacity) | MJ1033 |
| 2/3-Hole Punch Unit for MJ1032N | MJ6007 |
| 2/3-Hole Punch Unit for MJ1033 | MJ6008 |
| Connectivity/Security Options | |
| Fax Kit | GD1350 |
| 2nd Line Fax | GD1260F |
| IPsec Enabler | GP1080 |
| Wireless LAN Adapter | GN1060 |
| Antenna | GN3010 |
| Meta Scan Enabler | GS1010 |
| Advanced Scanning | GB1280T |
| Harness Kit for Coin Controller | GQ1180 |



| | |
|-------------------------|---|
| Corporate Office | 9740 Irvine Blvd., Irvine, CA 92618-1631 Tel: 949-462-6000 |
| East Coast | 959 Route 46 East, 5th Floor, Parsippany, NJ 07054 Tel: 973-316-2700 |
| Midwest | 8770 W. Bryn Mawr Ave., Suite 700, Chicago, IL 60631 Tel: 773-380-6000 |
| South | 2037 Bakers Mill Rd., Dacula, GA 30019 Tel: 678-546-9385 |
| West Coast | 9740 Irvine Blvd., Irvine, CA 92618 Tel: 949-462-6000 |
| Web Site | www.business.toshiba.com |

Designs and specifications subject to change without notice. For best results and reliable performance, always use supplies manufactured or designated by Toshiba. Not all options and accessories may be available at the time of product launch. Please contact a local Authorized Toshiba Dealership for availability. Toner yields are estimates based on 6% coverage, letter-size page. Driver and connectivity feature support varies by client/network operating system.