

# e-STUDIO™ 5530c PRO/7030c PRO SPECIFICATIONS

Get high-performance color at the lowest possible operating cost. These lightning-fast, full-color digital multifunction products, (MFPs) are packed with features that make short work of your most demanding color and black and white document needs. Both devices offer a powerful and efficient combination of production color copying along with optional network printing, scanning, and faxing capabilities—all in one flexible footprint.

## fast and friendly

The icon-driven display delivers an intuitive user interface. No more poking around to figure out advanced tasks. Plus, a QWERTY keyboard make entering information on screen a breeze.



## think green!

Toshiba is mindful of the environment and strives to conserve natural resources. That's why both devices have attained the coveted Energy Star rating. They use half the electricity of standard models and power down when not in use. Both feature quick start-up, minimal ozone emissions, and are RoHS compliant.

### SPECIFICATIONS

<b>Copying Process</b>	4-Drum Electrostatic Photographic Transfer System with Internal Transfer Belt
<b>Copying Type</b>	Color Laser
<b>Copy/Print Resolution</b>	600 x 600 dpi
<b>Copy/Print Speed</b>	e-STUDIO5530c PRO – 55 PPM Color / 60 PPM B&W e-STUDIO7030c PRO – 70 PPM Color / 75 PPM B&W
<b>Warm-Up Time</b>	Less than 90 Seconds / 75 Seconds
<b>First Copy Out Time</b>	e-STUDIO5530c PRO – 7.5 Seconds Color / 5.7 Seconds B&W e-STUDIO7030c PRO – 6.4 Seconds Color / 4.9 Seconds B&W
<b>Duty Cycle</b>	150,000
<b>Multiple Copying</b>	Up to 999 Copies
<b>Acceptable Paper Size and Weight</b>	Cassette: ST-R to 12" x 18" (14 lb. Bond - 80 lb. Cover) Bypass: ST-R to 12" x 18" (14 lb. Bond - 110 lb. Cover) A4-LCF: Letter (14 - 34 lb. Bond) A3-LCF: ST-R to 12" x 18" (14 lb. Bond - 110 lb. Cover)
<b>Paper Supply</b>	2 x 550 Sheets (Universal) 2 x 1,100 Sheets (LT-only) 100-Sheet Bypass (Universal) Optional: 4,000-Sheet A4/LT LCF Optional: 2,000 Sheet A3/LD LCF*
<b>Duplex</b>	Standard 100-Sheet Duplex Unit (17 lb. Bond - 90 lb. Index)
<b>Memory (Max)</b>	1,536 MB RAM / 320 GB (160 GB x 2) HDD
<b>Reduction/Enlargement</b>	25% to 400%
<b>Dimensions</b>	Approx. 29.5" x 33.5" x 43.1" (W x D x H)
<b>Weight</b>	Approx. 656.9 lb.
<b>PM Cycle</b>	150,000
<b>Drum Type/Yield</b>	Organic Photoconductor: 450,000
<b>CMYK Toner Yield</b>	CMY: 21,600 / K: 43,200
<b>Black Developer Yield</b>	450,000
<b>Power Supply</b>	e-STUDIO5530c PRO – 120 V / 20 Amps / 60 Hz e-STUDIO7030c PRO – 208-240 V / 12 Amps / 60 Hz
<b>Power Consumption</b>	Less than 1,920 W / 2,400 W

### PRINT SPECIFICATIONS

<b>PDL Support</b>	RCPS, PCL5c, PDL6, PostScript 3 (optional)
<b>Protocol Support</b>	IPX/SPX, TCP/IP, SMB, AppleTalk
<b>Drivers</b>	Netware 6.x, Microsoft Windows 2000/XP/Server 2003, UNIX, Sun Solaris, HP-UX, IBM AIX, RedHat Linux, SCO OpenServer, Macintosh
<b>Connectivity</b>	10BaseT/100BaseTX, USB 2.0, Gigabit Ethernet (optional)
<b>Device Management</b>	SmartNetMonitor, Command WorkStation (EFI)

### SCAN SPECIFICATIONS

<b>Scan Resolution</b>	Up to 600 dpi
<b>Scan Speed</b>	69 SPM Color / 81 SPM B&W
<b>File Format</b>	Single/Multi-Page PDF, Single/Multi-Page TIFF, High Comp PDF
<b>Authentication</b>	LDAP, SMB, FTP

### FACSIMILE SPECIFICATIONS

<b>Compatibility</b>	ITU-T (CCITT) G3, Additional G3 (optional)
<b>Data Compression</b>	MH/MR/MMR/JBIG
<b>Transmission Speed</b>	G3: Approx. 2 Seconds
<b>Fax Modem Speed</b>	33.6 Kbps - 2,400 bps
<b>Quick Dial/Speed Dial</b>	Standard - 2,000 Numbers
<b>Group Dial</b>	Standard - 100 Groups (500 Numbers per Group)
<b>Program</b>	Standard - 100 Numbers
<b>Scan Speed</b>	.5 Seconds per Page

### OPTIONS

<b>413965 A3/LCF Large Capacity Tray</b>	2,000-Sheet Tray, Ledger-Size
<b>411182 A4/LCF Large Capacity Tray</b>	4,000-Sheet Tray, Letter-Size
<b>412204 A4 Adapter Connection Kit</b>	Use with A4-LCF Large Capacity Tray
<b>411187 A4/LT to Legal-Size Adapter</b>	Letter to Legal-Size, Adapter for A4/LCF (2,500-Sheet)
<b>412190 Copy Tray</b>	Exit Tray
<b>412976 Dual Source Interposer</b>	2 Sources for Covers or Inserts
<b>412213 Cover Interposer</b>	1 Source for Covers or Inserts
<b>413974 50-Sheet Stapling Finisher</b>	50-Sheet Staple Capacity
<b>413976 Booklet Stapling Finisher</b>	50-Sheet Staple Capacity with Saddle
<b>412981 100-Sheet Stapling Finisher</b>	100-Sheet Staple Capacity
<b>413973 Finisher Adapter</b>	Use with 100-Sheet Finisher
<b>412983 100-Sheet Hole Punch Unit</b>	Use with 100-Sheet Finisher
<b>412209 50-Sheet Hole Punch Unit</b>	Use with 50-Sheet Finisher
<b>412203 Tab Sheet Holder</b>	Holds Tab Paper in Drawer
<b>412805 Z-Folding Unit</b>	Folds Ledger-Size Sheets into Letter-Size Documents
<b>412212 Output Jogger Unit</b>	Use with 50-Sheet Finishers
<b>412191 9-Bin Mail Box</b>	200 Sheets Each Tray
<b>412415 Tandem Copy Connector</b>	Connects 5530c PRO-7030c PRO Units
<b>318398 Printer/Scanner Kit</b>	Embedded Printer/Scanner Kit
<b>414000 Genuine Adobe PostScript3</b>	Use with Printer/Scanner Kit
<b>414002 Data Overwrite Security Unit</b>	Data Security Solutions
<b>414496 EFI E7100 Controller</b>	Fiery-Driven Solutions
<b>413968 Fax Option</b>	Provides Walk-up or LAN Fax
<b>413971 G3 Interface Unit</b>	Use with Fax Option to Add More Lines
<b>400516 Memory Unit</b>	32 MB for Fax Option

\* Bypass is disabled with addition of A3/LCF



### AUTHORIZED TOSHIBA DEALER

Designs and specifications subject to change without notice. For best results and reliable performance, always use supplies manufactured or designated by Toshiba. Not all options and accessories may be available at the time of product launch. Please contact a local Authorized Toshiba Dealership for availability. Toner yields are estimates, based on 6% coverage, letter-sized page. Driver and connectivity feature support varies by client/network operating system.

Corporate Office: 2 Musick, Irvine, CA 92618-1631  
Tel: 949-462-6000

East Coast: 959 Route 46 East, 5th Floor, Parsippany, NJ 07054  
Tel: 973-316-2700 Fax: 973-263-2393

Midwest: 8770 W. Bryn Mawr Ave., Suite 700, Chicago IL 60631  
Tel: 773-380-6000 Fax: 773-380-8077

South: 4855 Peachtree Industrial Blvd., Suite 210, Norcross, GA 30092  
Tel: 770-209-8540 Fax: 770-209-8556

West Coast: 142 Technology, Suite 150, Irvine, CA 92618  
Tel: 949-462-6262 Fax: 949-462-2700

Web Site: copiers.toshiba.com

©2009 Toshiba America Business Solutions, Inc., Electronic Imaging Division  
e-STUDIO5530c PRO/7030c PRO Brochure/Inv. Code ES5530c7030c1

20M March 2009 USA DG

# e-STUDIO™ 5530c PRO / 7030c PRO



## HIGH-SPEED PRODUCTIVITY. HIGH-QUALITY COLOR.



**TOSHIBA**  
Leading Innovation >>>

**TOSHIBA**  
Leading Innovation >>>

e-STUDIO™ 5530c PRO / 7030c PRO



TODAY'S CORPORATE MANTRA:

**DO MORE WITH LESS.**

#### DEMAND MORE FROM YOUR MFP

Save time and get more done. With a monthly copy volume of 150,000 sheets, these systems can handle whatever jobs your company can dish out—so there's no need to outsource.

#### MASSIVE CAPACITY

If you print a lot of letter-sized documents or full-color newsletters, you'll appreciate the two Large Capacity Feeder (LCF) options—letter-size (4,000 sheets) or ledger size (2,000 sheets)—the latter being a great choice for either of the Booklet Maker options. Using either of these options, you'll have plenty of paper.

#### SPEED THRILLS

Blazing fast print speeds are only rivaled by the rich, deep color of 600 DPI resolution. Not only do these systems deliver quality output, they're faster than any other device in their class.

#### Get high-performance color at the lowest possible operating cost.

Right now, your workgroup is tasked with doing more using fewer resources. So when your high-volume jobs and network workloads stack up, cut them down to size with the Toshiba e-STUDIO5530c PRO / e-STUDIO7030c PRO. These high-performance, full-color digital multifunction products (MFPs) are packed with features that make short work of your most demanding color and black-and-white document needs.



# STRONG PERFORMANCE

# THAT'S FLEXIBLE TOO.

## More features, more productivity.

The e-STUDIO5530c PRO / e-STUDIO7030c PRO are feature-packed, starting with their 600 DPI resolution image quality for both black-and-white and color. Next is the 100-sheet Reversing Automatic Document Feeder (RADF) that quickly scans 69 originals-per-minute at 600 x 600 DPI in full color—and a lightning-fast 81 scans-per-minute in black-and-white. Now that's productive.

## Greater capacity to keep jobs in-house.

Large jobs require lots of paper. If you have to keep refilling the paper supply, productivity is compromised, particularly if you need to swap various paper types and sizes. The e-STUDIO5530cPRO/ e-STUDIO7030cPRO overcome this obstacle by providing a huge 3,400-sheet standard paper capacity. Each device offers tandem letter-size trays that hold 1,100 sheets per side and two lower cassettes that each house 550 sheets of Statement to 12" x 18" paper—allowing 11" x 17" bleeds after trimming.



Convenient 500-sheet proof tray allows easy access to unfinished documents, while 3,000 sheet shift tray provides for uninterrupted high-volume output with finishing.



### Booklet Maker

The conveyor-belt exit tray design of the Booklet Maker allows for unsupervised long saddle-stitch runs, while the trimmer and square edge folder ensure a professionally-finished appearance.

## FEATURES AT A GLANCE

### General Features

- Complete copying, printing, scanning, faxing, and document server functionality
- Easy to use—requires little training
- Integrated finishing options include stapling, booklet finishing, hole punching and much, more
- Security features—disk overwrite, IPV6, secure PDF, or just private print —your documents are safe
- Document server—allows convenient storage of frequently reprinted jobs
- Fast—with 70PPM color/75PPM black-and-white and 55PPM color/60PPM black-and-white output

### Copier Features

- Scan once, print many for maximum productivity and reliability
- Standard 100-sheet RADF delivers simplex and duplex scanning
- First Copy Out Time (FCOT) of up to 6.4 seconds

## Versatile enough for all your needs.

- **Optional A3/Ledger-sized Large Capacity Feeder** adds another 2,000 sheets of paper to the equation. So you get plenty of paper in the ideal size and orientation for your most demanding booklet jobs.
- **Optional Tab Sheet Holder** lets you reliably feed tab paper from the two 550-sheet drawers. The e-STUDIO5530c PRO / e-STUDIO7030c PRO support copying or printing onto tabs, and can insert the tabs into the finished job.
- **Optional Unique Two-Source Cover Interposer** allows the incorporation of pre-printed covers and inserts into a single job. Additionally, you don't have to give up a valuable copy paper source or incur unnecessary copy charges for covers or inserts that were not produced on the MFP itself.
- **Optional Z-Fold Unit** allows you to integrate ledger-size pages into letter-sized jobs.
- **Optional GBC StreamPunch III** handles a variety of die options to accommodate the most popular comb binding choices.
- **Optional Plockmatic Booklet Maker** produces larger booklets of up to 30 sheets (120 pages) and comes with a trimmer option, a cover feeder, and a unique book folder that provides a versatile, square edge.
- **Optional Mailbox** is a multi-bin exit tray that attaches to either of the 50-sheet finishers and reduces the chance of walking away with the wrong job.
- **Full-Color WVGA Control Panel** cuts down the learning curve with an intuitive, icon-driven interface.
- **Optional 2- and 3-Hole Punching** makes it easy to accommodate a greater variety of jobs.
- **Bypass Tray** gives you on-the-fly access to more paper options.

### Options

Choose among the GBC StreamPunch III, 100-sheet finisher, Booklet Maker, Z-fold unit and 2-tray interposer. Can't decide? Choose them all!



# STRONG, INTELLIGENT AND DEPENDABLE.

## Reliability you can count on.

The e-STUDIO5530c PRO/e-STUDIO7030c PRO are built to perform. Each deliver maximum monthly duty cycles of 150,000 as well as drum life and toner yields that are equally impressive.

## Sophisticated and smart.

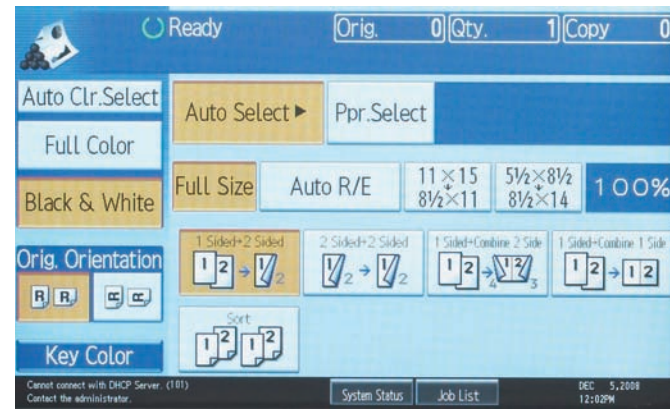
The e-STUDIO5530c PRO/e-STUDIO7030c PRO are network-ready, with printing and scanning tasks accomplished with the aid of a PCL5e/PCL6 controller and an Refined Printer Command Stream (RPCS) driver. With the RPCS driver, you can store common, user-specific print configurations to the system for quick access later. Plus, both devices offer optional Genuine Adobe PostScript 3 support—a must for any production environment.

## Fast and friendly.

The icon-driven, WVGA display delivers an intuitive user interface that gets new users up and running quickly. No more poking around to figure out advanced tasks—print commands are intuitive and easy-to-perform. Plus, a QWERTY keyboard makes entering information on screen a breeze.

## Stay on top of your jobs.

The e-STUDIO5530c PRO/e-STUDIO7030c PRO come with two 160GB hard drives that lets users scan multiple jobs into memory. Also, the large, easy-to-use LCD panel shows you where your job is in the queue and provides an estimate of the time it will take to complete each job.



Large, icon-driven, full-color, front panel makes programming complex jobs easier than ever.



### Interposer

The unique 2-tray interposer allows users to add covers and inserts to their documents for increased production flexibility and reduced cost.

Unique built-in Tandem LCF holds two stacks of 1,100 sheets each, increasing the system's capacity and allowing you to change paper on-the-fly while the system is in use. An optional 11"x17" Tray Kit replaces this with 1,100 sheets of Letter-R, Legal, or Ledger-size paper—a serious consideration for specific vertical markets.

## Security features keep your data safe.

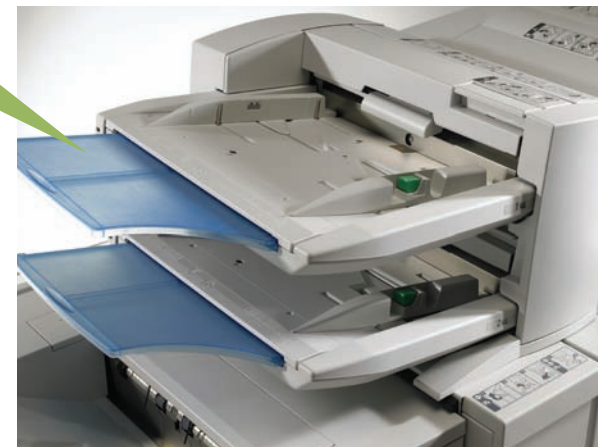
Data security is critical. That's why each device offers standard Windows and LDAP authentication. And when combined with the Data Overwrite Security option, the e-STUDIO5530c PRO/e-STUDIO7030c PRO more than meet the needs of today's security-conscious environments. The overwrite kit writes over any temporary data on the hard drives multiple times after every copy, print, scan, and network fax job—or at any specific interval you choose.

## Environmentally friendly.

Toshiba is mindful of the environment and continually strives to conserve natural resources. That's why both the e-STUDIO5530c PRO/e-STUDIO7030c PRO have attained the coveted Energy Star rating. Additionally, the e-STUDIO5530c PRO/e-STUDIO7030c PRO power down when not in use, and feature quick start-up technology, minimal ozone emissions, and are Restriction of Hazardous Substances (RoHS) compliant.

## The industry standard for color and performance.

Whether you're looking for a responsive network resource, or a dedicated high-volume powerhouse, the e-STUDIO5530c PRO/e-STUDIO7030c PRO are more than ready to handle the task. Both provide optional network printing, scanning, and fax capabilities combined with the best high-volume, light-production color offerings available on the market today.



The convenience of the saddle-stitch Booklet Maker enables users to create booklets of up to 60 pages (15 sheets). The system supports pre-imposed documents, or you can let it do the layout for you. Now that's convenient.

### LCF

New A3/Ledger-size LCF increases flexibility and adds another 2,000 sheets of Ledger, Legal, or Letter-R size paper for booklet making, title companies, law firms, or other vertical markets.

## COLORFUL ADVANTAGES

Whether it's security, the environment, or image quality, the e-STUDIO5530c PRO/e-STUDIO7030c PRO will have you seeing green, but the price won't have you seeing red.

