

TOSHIBA

e-STUDIO™ 908/1058/1208

- > Departmental/Light Production
- > Advanced Paper Handling
- > Proven Reliability
- > High Volume
- > Solutions Ready



EMPOWER YOUR BUSINESS IN POWERFUL WAYS.

If you're looking for ways to grow and expand your business, Toshiba has the answer. With the e-STUDIO1208 Series, you can take advantage of impressive speeds, outstanding reliability, and flexible paper handling. That's just the beginning, because the processing and output are equally impressive.

A workhorse at work.

Amazing performance starts right out of the gate with a first copy out time as fast as 3.2 seconds and copy speeds of 90, 105 and 120 pages per minute. Want to scan? That's done at up to 240 impressions per minute (ipm) for double sided documents and 120 ipm for single sided. All of these outstanding features are right at your fingertips, thanks to an intuitive, large touch panel.

Performance never looked so good.

Outstanding image quality at 1,200 x 1,200 dpi is consistently impressive, even across long print runs. You can rest assured documents of all sizes will turn out precise and accurate, run after run after run. And, you can use a variety of media – up to 160lb index. Need more toner? Simply replace the toner cartridge while the job is still running.

The technology of getting what you want.

In addition to speed and image quality, the e-STUDIO1208 Series offers a variety of paper handling, input and finishing options. There's also extra-large paper capacity and document storage. In addition, you get to choose from various paper trays, folding units and finishers.

More processing, less effort.

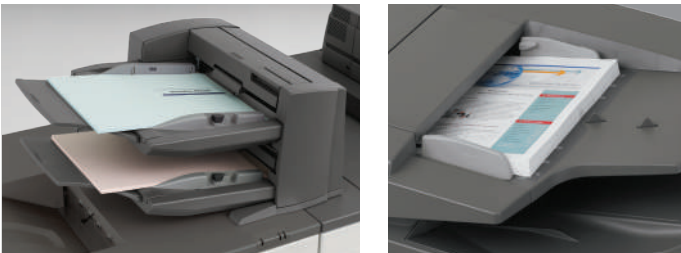
The series features powerful Intel processors and large RAM, which allows the systems to handle large runs in very little time. Furthermore, PCL6 and genuine Adobe PostScript 3 come standard. A 10/100/1000 BaseT Gigabit Ethernet connection enables transferring of large files quickly and the e-STUDIO1208 Series 1 TB HDD can store 35,000 pages while performing all of the impressive MFP functions.

The business of security.

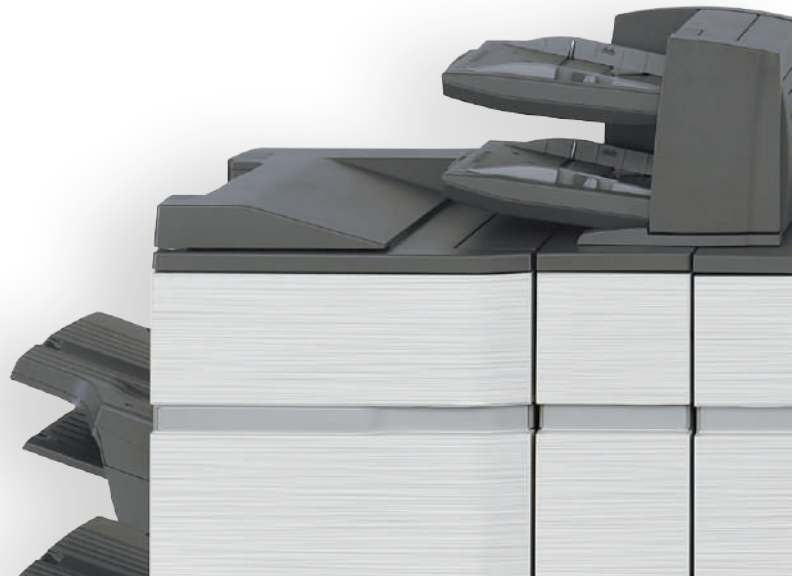
Security continues to be a growing issue for businesses around the world. Toshiba stays ahead of the game. The e-STUDIO1208 Series lets you breathe easier by offering security features such as Data Overwrite, Encryption, Authentication, Hidden Pattern Printing and Image Logs.

Environmentally and business friendly.

At Toshiba, we go to great lengths to reduce our environmental impact, and yours. We rank in the highest levels thanks to accomplishments like being RoHS Compliant and ENERGY STAR® rated. The e-STUDIO1208 Series utilizes CO2 reducing plastics and toner, Energy Save and Eco Modes, Enhanced Power Shut-Off and Eco Scan as well as a reduced TEC value. We are always working to make sure our environmental impact is a positive one.



A large 250-sheet Duplex Single Pass Feeder (DSPF) handles your biggest jobs with ease. Time saving features like an interposer and a multitude of finishing options allow you to produce professional looking documents, brochures, and booklets.



THE e-STUDIO1208 SERIES AT A GLANCE.

Super fast features

- > First copy out time as fast as 3.2 seconds
- > 90, 105 and 120 pages per minute respectively
- > Up to 240 images per minute scan speeds

Ease of use

- > Up to 15" touch screen control panel
- > Access to the entire user manual at the keyboard
- > Full fax functionality on the e-STUDIO908

Workhorse performance

- > Up to 1,000K monthly copy volume
- > Hefty toner yield of 120K at 5% coverage

Massive paper handling

- > Up to 13,500-sheet maximum paper capacity
- > Up to 9 paper sources plus 2 insert sources
- > Handles up to 160lb index

Network print and scan

- > PCL6 and genuine Adobe PostScript 3 come standard
- > USB-direct printing and scanning
- > Direct print from FTP, web page, email and SMB

Various finishing options

- > 100-sheet stapler finisher
- > 100-sheet stapler finisher with saddle stitch
- > Folding and post inserter options



A convenient status indicator changes color, runs solid or blinks to let you know when the MFP needs attention. >

A variety of options allows you to configure an MFP that perfectly suits your needs. All with the speed, reliability, and quality you've come to expect from Toshiba.



e-STUDIO™ 908/1058/1208

Main Specifications

System Overview	Base Models include LCD, DSPF, 1TB Hard Disk Drive, PCL6®/Adobe® PostScript® 3™ Network Printing, Color Network Scanning, Web Browser, Keyboard
Type	Console, Monochrome Multi-Function Digital Document System
Display	15.4" WXGA (e-STUDIO1058/1208) or 10.1" WXGA (e-STUDIO908) Color Touch Panel Tilting Display
Functions	Copy, Print, Network Print, Network Scan and Document Filing
Copy System	Dry Electrostatic Transfer/Dual Component Developer/Magnetic Brush Development/OPC/White LED Exposure/Heat Roller Fusing Sheets and Bound Documents
Originals	11" x 17"
Max Original Size	11" x 17"
Copy Size	Min. 5.5" x 8.5", Max. 11" x 17" + 12" x 18"
Copy Speed	90/105/120 PPM (8.5" x 11")
Multiple Copy	Max. 9999 Copies
First Copy Time	Platen Glass: 4.0/3.2/3.2 Seconds DSPF: 6.3/5.5/5.5 Seconds
Warm Up Time	210 Seconds
Magnification	25% to 400% in 1% Increments (with Document Feeder 25%-200%)
Original Feed	250-Sheet DSPF
Scan Speed	DSPF Scan: Up to 240 IPM (200IPM e-STUDIO1058/1208)
Original Sizes	5.5" x 8.5", 8.5" x 11", 8.5" x 11" R, 8.5" x 14", 11" x 17"
Paper Capacity	e-STUDIO908 - Std. 3,100 Sheets/Max. 8,500 Sheets e-STUDIO1058/1208 - Std. 3,000 Sheets/Max. 13,500
Paper Feed Sizes	Standard: Tandem Tray 1 - 1200 Sheets (Letter), Tandem Tray 2 - 800 Sheets (Letter), Trays 3/4 - 500 Sheets ea. (Letter/Legal/Ledger/Statement/12" x 18"), Multi-Bypass Tray (for Machine) - 100 Sheets (Letter/Legal/Ledger/Statement/12" x 18"), Multi-Bypass (for LCT) - 500 Sheets (Letter/Legal/Ledger/Statement/12" x 18"), LCT (2-Drawer) - 2,500-Sheets Each Drawer (Letter/Legal/Ledger/12" x 18"), Letter LCC - 3,500 Sheets (Letter) Tandem Trays - 16-28 lb Bond, Trays 3/4 - 16 lb Bond to 100 lb Bristol, Multi-Bypass Tray (for Machine) - 15 lb Bond to 110 lb Cover, Multi-Bypass Tray (for LCT) - 15 lb Bond to 100 lb Bristol, LCT (2-Drawer) - 15 lb Bond to 110 lb Cover, Letter LCC - 16 lb Bond to 110 Cover. Supported Paper Types Include Thin, Plain, Recycled, Color, Letterhead, Pre-printed and Pre-Punched and Glossy
Duplexing	Standard Automatic Duplex Copying and Printing
CPU	e-STUDIO908 - 1.91 GHz Multi-Processor e-STUDIO1058/1208 - 1.8 GHz Multi-Processor
Interface	RJ-45 Ethernet (10/100/1,000 Base-T), USB 2.0 (2 Host Ports, Front and Rear), USB 2.0 (1 Device Port)
Memory	6GB (e-STUDIO1058/1208 5GB)
Hard Disk Drive	1TB
Resolution Scan/Copy	1200 x 1200 dpi / 600 x 600 dpi
Copy Modes	Monochrome/Grayscale
Exposure Control Modes	Text, Text/Printed-Photo, Printed-Photo, Text Photo, Photo, Map, Pale-Color Settings: Auto or 9 Step Manual
Halftone	256 Gradations/2 Levels (Monochrome)
Copy Features	Electronic Sort, Auto Paper Selection (APS), Auto Magnification Selection (AMS), Image Preview/Edit, Auto Tray, Paper Type Selection Switching, Rotate Copy, Reserve Copy, Tandem Copy, Book Copy, Margin Shift, Edge/Center Erase, Book Divide, Dual Page, Cover/Insert Page, OHP Insert, Job Build, Card Shot, Blank Page Skip, Mirror/B/W Reverse, Proof, Pamphlet, Watermark, Custom Image, Job Programs
Account Control	Up to 1,000 Users. Supports User Authentication (via LDAP Server) for Copy, Print, Scan and Document Management
Environmental	International ENERGY STAR® Program Ver. 2.0, Law on Promoting Green Standards Purchasing, European RoHS (Restriction of Hazardous Substances)
Power Source	AC 208-240 VAC, 60 HZ, 15 Amps Power
Consumption Maximum	3.55 kW or Less
Weight	Approx. 665 lb
Dimensions	e-STUDIO908 Approx. 42.75" (W) x 31.25" (D) x 48.75" (H) e-STUDIO1058/1208 Approx. 45" (W) x 30.5" (D) x 60.25" (H)

Network Printing System (Standard)

PDL	PCL6, True Adobe, PostScript 3
Resolution	1200 x 1200 dpi
Print Speed	90/105/120 Pages Per Minute (8.5" x 11")
Print Drivers	Windows Server® 2008-2012, Windows Server® 2008-2012 x64, Windows® 8, Windows® 8 x64, Windows® 8.1, Windows® 8.1 x64, Windows® 10, Windows® 10 x64, macOS X (Including 10.4-10.11)
Features	Auto Configuration, Continuous Printing, Electronic Sorting, N-Up Printing, Duplex Printing, Transparency Inserts, Margin Shift, Image Rotation, Different Cover Page, Poster Print, Job Bypass Print, Job Retention, Confidential Print, Proof Print, User Authentication, Image Stamp and Watermarks
Additional Features	Multiple Pamphlet Print, Network Tandem Print, Carbon Copy Print Mode, Different Cover Page/Last Page/Other Page, Form Overlay, Tab Paper Settings, Tab Printing, Chapter Inserts and More
Direct Printing	File Types: TIFF, JPEG, PCL, PRN, TXT, PDF, Encrypted PDF, Compressed PDF/A1, PostScript (Plus DOCX, XLSX, PPTX & PNG e-STUDIO908 Only). Methods: FTP, Web Page, Email, Network Folder and USB
Resident Fonts	80 Outline Fonts (PCL), 139 Fonts (PS)
Interface	RJ-45 Ethernet 10/100/1,000 Base-T, USB 2.0
Operating Systems	Windows Server® 2008-2012, Windows® 7, Windows® 8/8.1, Windows® 10, macOS X (10.4-10.11), UNIX®, Linux®, and Citrix® XenApp
Network Protocols	TCP/IP (IPv4, IPv6, IPSEC) SSL (HTTP, IPP, FTP), SNMPv3, SMTP, POP3, LDAP, 802.1x for Windows® and UNIX®, LPD and LPR for UNIX®, IPX/SPX® for Novell® Environments and EtherTalk, AppleTalk® for Macintosh Environments
Printing Protocols	LPR, IPP, IPPS, PAP, Raw TCP (Port 9100), FTP and Novell® Pserver/Rprinter

Designs and specifications are subject to change without notice. Specifications may vary by conditions of use and/or environmental usage. For best results and reliable performance, always use supplies manufactured or designated by Toshiba. Not all options and accessories may be available at the time of product launch. Please contact a local Authorized Toshiba Dealership for availability. Toner yields are estimates based on 5% coverage of a Letter-sized page. Driver and connectivity feature support varies by client/network operating system. Product names may be trademarks of their respective companies. This is a Class 1 laser product complying with IEC60825-1. All company and/or product names are trademarks and/or registered trademarks of their respective manufacturers in their markets and/or countries.

Network Scanning System (Standard)

Scan Modes	Standard: Color, Monochrome, Grayscale
Max. Original Size	11" x 17"
Optical Resolution	600 dpi
Output Modes	600 dpi, 400 dpi, 300 dpi, 200 dpi, 150 dpi, 100 dpi
Image Formats	Monochrome: TIFF, PDF, Encrypted PDF, XPS, PDF/A Color/Grayscale: Color TIFF, JPEG, PDF, Encrypted PDF, PDF/A1, Compressed PDF1, XPS1 (+ Searchable PDF, DOCX, XLSX, PPTX & PNG e-STUDIO908 Only)
Image Compression	Monochrome Scanning: Uncompressed, G3 (MH), G4 (MR/MMR)
Scan Destinations	Color/Grayscale: JPEG (High, Middle, Low)
One-Touch Destinations	Email, Desktop, FTP, Folder, (SMB), USB
Group Destinations	Up to 2,000 (Combined Scan Destinations)
Programs	Up to 500
Max. Jobs	48 (Combined)
Network Protocols	Up to 100 TCP/IP and TLS (Includes HTTP, SMTP, LDAP, FTP, POP3), SMB, ESMTCP and 802.1x

4K 100-Sheet Stapler/Finisher (MX-FN21: option)

Type	4,000-Sheet Console Stapler Finisher (100-Sheet Stapling)
Output Trays	Upper Tray: Moving Offset Tray (Up to 1,500 Letter Sheets) Middle Tray: 250 Sheets (Letter, Non-Stapled) Lower Tray: Moving Offset Tray (Up to 2,500 Letter Sheets)
Stapling Capacity	Up to 100 Sheets (Letter/Statement)
Stapling Media	Plain Paper, Letter/Legal/Ledger or Mixed
Stapling Positions	1 Front, 1 Rear, or 2 Point Stitching
Hole Punching	Optional Three-Hole Punch Unit MX-PN13B
Power Source	20 VAC, 60 HZ, 15 Amps
Power Consumption	200w/350w with MX-FD10
Weight	Approx.: 134.5 lb
Dimensions	Approx.: 35.25" (W) x 30" (D) x 41" (H) (with Tray Extended)

4K 100-Sheet Stapler/Saddle-Stitch Finisher (MX-FN22: option)

Type	4,000-Sheet Console Stapler Finisher (100-Sheet Stapling)
Output Trays	Upper Tray: Moving Offset Tray (Up to 1,500 Letter Sheets) Middle Tray: 250 Sheets (Letter, Non-Stapled) Lower Tray: Moving Offset Tray (Up to 2,500 Letter Sheets)
Stapling Capacity	Up to 100 Sheets (Letter/Statement)
Stapling Media	Plain Paper, Letter/Legal/Ledger or Mixed
Stapling Positions	1 Front, 1 Rear, or 2 Point Stitching
Saddle Stitch	Center Stitch/Center Fold (2 Staples) Letter/Legal/Ledger Paper, Saddle-Stitch Up to 5 Sets (16-20 Sheets)/10 Sets (11-15 Sheets)/15 Sets (6-10 Sheets)/Max. Sets: 25 (1-5 Sheets)
Hole Punching	Optional Three-Hole Punch Unit MX-PN13B
Power Source	120 VAC, 60 HZ, 15 Amps
Power Consumption	200W/350W with MX-FD10
Weight	Approx. 134.5 lb
Dimensions	Approx. 35.25" (W) x 30" (D) x 41" (H) (with Tray Extended)

Optional Equipment

MX-CF11	Insertor
MX-FD10	Multi-Folding Unit
MX-LC12	3,500-Sheet Large Capacity Cassette (Letter)
MX-LC3N	3,000 Sheet Large Capacity, Ledger (e-STUDIO908 Only)
MX-LC13N	5,000-sheet Large Capacity 2-Drawer Air Feed Tray (Ledger)
MX-MFX1	100-Sheet Multi-Bypass Tray (for Machine)
MX-MF11	500-Sheet Multi-Bypass Tray (for MX-LC13)
MX-FN21	4K Stacking 100-Sheet Staple Finisher
MX-FN22	4K Stacking 100-Sheet Staple/Saddle Stitch Finisher
MX-FN24	3K Stacking 50-Sheet Staple Finisher (e-STUDIO908 Only)
MX-FN25	3K 50-Sheet/Saddle Stitch Finisher (e-STUDIO908 Only)
MX-CF11	2-Tray Insertor Unit
MX-FD10	Multi-Folding Unit
MX-RB16	Large Capacity Tray Mounting Kit
MX-RB17	Large Capacity Tray Tandem Connecting Kit
MX-RB18	Curly Correction Unit
MX-RB13	Relay Unit
MX-TM10	Trimmer Unit
MX-PN13B	3-Hole Punch Unit (for MX-FN21/FN22)
MX-PNX4B	3-Hole Punch Unit (for MX-FN24/FN25)
MX-SL10N	Status Indicator
MX-FX15	Fax Expansion Kit (e-STUDIO908 Only)

Supplies

T1207U	Toner Cartridge (Yield 120K @ 5%)
6LS00016000	Developer D1207
Staple2000	Staple Cartridge (for MX-FN24/FN25)
Staple3100	Staple Cartridge (for MX-FN25 - Saddle)
Staple2400	Staple Cartridge (for MX-FN22 - Saddle)
Staple2600	Staple Cartridge (for MX-FN21/FN22)

Corporate Office

25530 Commercentre Drive, Lake Forest, CA 92630
Tel: 949-462-6000

East Coast

959 Route 46 East, 5th Floor, Parsippany, NJ 07054
Tel: 973-316-2700

Midwest

8770 W. Bryn Mawr Ave., Suite 700, Chicago, IL 60631
Tel: 773-380-6000

South

2037 Bakers Mill Rd., Dacula, GA 30019
Tel: 678-546-9385

West Coast

25530 Commercentre Drive, Lake Forest, CA 92630
Tel: 949-462-6000

Web Site

www.business.toshiba.com