



Xerox Nuvera® 200/288/314 EA Perfecting Production System

Make a perfect impression.

More of everything you need to grow your business.

Take your business to rewarding new levels with the Xerox Nuvera® 200/288/314 EA Perfecting Production System. This easy-to-use, flexible system is built on a strong foundation of exceptional image quality, speed and efficiency—unleashing new levels of productivity so you can get your business growing.

ESSENTIAL ELEMENTS THAT DELIVER FOR YOU

The Xerox Nuvera® foundation comprises essential elements for incredible, offset-level image quality. It offers 4800 x 600 dpi and up to 156 lpi, plus the cost and time efficiencies associated with digital.

- **Faster and more RIPs.** An advanced Dual Core Processor plus Parallel Raster Image Processing (RIP) means the Xerox Nuvera® gets your jobs in and out of the gate in a hurry. Your jobs are processed quickly and in the most efficient way possible.
- **Lightning-quick machine and finishing speeds.** You can complete your jobs in less time than ever before with machine speeds of up to 314 duplexed images per minute. On top of that, finishing speeds are close to machine-rated speeds, so you can complete your jobs quickly.
- **More uptime, more often.** The Xerox Nuvera® offers Pass Through Programming that enables you to keep your system up and running even when you're waiting for service. You'll enjoy more uptime, more often, ensuring you are able to meet your deadlines and productivity goals.

TOTAL PRODUCTIVITY CONTINUUM			
Setup Time	Processing Time	Run Time	Finishing Time
FreeFlow® <ul style="list-style-type: none"> • FreeFlow Core • FreeFlow Digital Publisher • FreeFlow Makeready® • FreeFlow Output Manager® • Variable Information Suite 	FreeFlow Print Server <ul style="list-style-type: none"> • 3.0 GHz Dual Core Processor <ul style="list-style-type: none"> – Advanced Parallel RIP – Optional: Second Dual Core Processor • RIP 1200 x 1200 dpi <ul style="list-style-type: none"> – 4800 x 600 dpi printing 	200/288/314 Duplexed Images Per Minute <ul style="list-style-type: none"> • Toner/Developer <ul style="list-style-type: none"> – 800,000+ images combined yield – Simple Reload While Run • Sheet-Feed Module combinations • Tecnav SheetFeeder NV 	<ul style="list-style-type: none"> • Optimizes speed capacity of finishing devices • Sheet Flatness = Reliability • Outstanding stack quality • Unload While Run
Uptime			
Pass Through Programming	Simple jam clearance, easily accessible		Xerox Nuvera® Productivity Plus (Integrated Maintenance Program)



**THE XEROX NUVERA® 200/288/314
EA PERFECTING PRODUCTION
SYSTEM OFFERS YOU EXTRAORDINARY
IMAGE QUALITY.**

The result of today's most progressive monochrome technology, coupled with customer-focused engineering, the Xerox Nuvera® relies on revolutionary EA fine particle toner to produce page after page of polished impressions that are comparable to, or exceed, offset-level output for all of your applications.

Since the industry quantifies great imaging in dots per inch (dpi) and lines per inch (lpi), it's important to know the Xerox Nuvera® has an impressive set of numbers to support the results you'll see, including:

- RIP at 1200 x 1200 dpi
- 4800 x 600 dpi printing
- Halftone screens available at 85, 106, 125, 134 and an unprecedented 156 lpi

These quality facts translate into the phenomenal printed pages you'll produce—through silky grays, pictures that say “this is for real” and heightened clarity and detail in every line and letter.

**EXTRAORDINARY SPEED, POWER
AND PRODUCTIVITY KEEP YOUR
JOBS MOVING.**

The Xerox Nuvera® features a unique tandem architecture design that enables it to produce 314 (A4/8.5 x 11") duplexed images per minute. This innovative design offers you a straight paper path to support a wide variety of media and facilitates reliable paper handling.

Whatever your environment, the system's Sheet Enhancement Module (SEM) ensures unparalleled sheet flatness. The result? Outstanding stack quality as well as higher levels of performance than downstream finishing alternatives. And since the print engine has the power to push third-party finishing equipment closer to its rated speed, you will realize true end-to-end productivity with the Xerox Nuvera®.

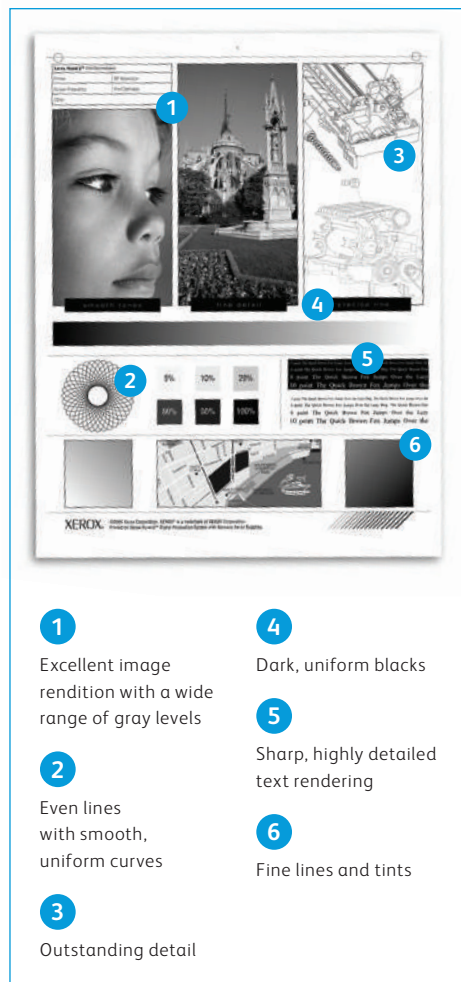
The Xerox® FreeFlow® Print Server's robust Dual Core Processor is at the heart of the Xerox Nuvera® hard-driving productivity. It enables you to handle even the most complex jobs with ease and finesse at incredible RIP speeds. And when you take advantage of the benefits of the parallel RIP feature, the Print Server will automatically channel each job so it is produced in the most efficient way possible.

Along with all this speed, power and productivity, you'll also find versatility. The Xerox Nuvera® accepts many common data streams in their native language, so what you expect is what you get—no data transformation required. It also has broad media latitude so you can choose from an enormous selection of substrates so you can push the limits of creativity and customer value.

Impress all of your audiences with great image quality.

There is no substitute for great images—they're the first thing your customers will notice and they make a lasting impression on you.

By combining progressive monochrome technology with customer-focused engineering, the Xerox Nuvera® 200/288/314 EA Perfecting Production System provides image quality that challenges offset.



INNOVATIVE EA TONER

Fine particle EA (Emulsion Aggregation) Toner is a key factor in the Xerox Nuvera® high image quality:

- It produces fine lines with maximum detailing, sharp text, halftones and deep solid blacks.
- Printed pages have a smooth, offset-like matte finish.
- Fine scatter typically associated with monochrome digital printing is transparent, so even the most detailed line work is razor sharp. Images are crisp and clear.
- High yields mean longer production print runs are possible without operator attention or intervention to change toner/developer.
- Friendly to the environment, EA Toner achieves better distribution of smaller particles for higher quality with less toner per page.

MORE UNATTENDED RUN TIME SAVES YOU TIME.

Toner and developer are uniquely combined in a single high-volume container, offering you key benefits:

- **Replace less often**—average yield for each toner bottle is 210,000 prints per cartridge.
- **Maximum unattended run time**—each Xerox Nuvera® system is equipped with a toner reservoir that holds enough toner for another 2,500 prints after the bottle is empty, allowing plenty of time to change-while-you-run.
- **More uptime**—change-while-run.

YOU'LL GET EXCELLENT RESOLUTION IN A CLEAN ENVIRONMENT.

The Xerox Nuvera® offers you the highest monochrome resolution of any digital production printing system currently available.

- RIPs at 1200 x 1200 dots per inch (dpi)
- 4,800 x 600 dpi printing
- Halftone screens available at 85, 106, 125, 134 and 156 lines per inch (lpi) ensure smooth grays, more realistic pictures and sharper details.
- Unique Cyclone Cleaning Technology automatically removes stray toner, paper dust and particles, creating a pristine environment for consistently sharp text, images and photos.

ADVANCED REGISTRATION TECHNOLOGY KEEPS SHEETS IN PLACE.

You'll achieve superior process and cross-process registration of +/- 0.65 mm for sheet sizes 8.5 x 11" and A4, which meets or exceeds general publishing standards. Our Translating Electronic Registration (TELER) precisely controls the position of each sheet of paper according to the image on the photoreceptor and the speed of each sheet traveling through the paper path. In this way, it ensures each sheet is in exactly the right position to receive the latent image to deliver impressive results.

SIMPLIFY UNIQUE REGISTRATION APPLICATIONS.

The Xerox Nuvera® 200/288/314 EA Perfecting Production System also enables customized, independent Side-1 and Side-2 registration for your most unique applications. Custom registration parameters can be established for a specific stock, then stored within the system's stock library for quick recall. This increases your productivity for even your most advanced applications.

MEDIA TO MATCH YOUR APPLICATIONS

You can choose from an expansive range of substrates to match your application requirements and build your application capabilities, even oversized coated papers. Expect consistently high image quality on popular coated and uncoated stocks, including Bond, Cover, Index, bristol, offset, recycled, transparencies, carbonless, labels, tabs and preprinted forms.

OPTIMAL SHEET FLATNESS ANYWHERE

Optimally flat sheets, delivered by our slim, automated Sheet Enhancement Module (SEM), yield flatter sheets with less curl for smoother print runs, regardless of your production print environment.

- Stack quality is optimized, ensuring high performance from your downstream finishing alternatives.
- Your operators can fine-tune automated controls or access a "manual override" function to compensate when proactively fighting heat and humidity in your print production environment. This ensures you achieve optimal sheet flatness.
- This functionality works in conjunction with the stock library to automatically adjust to the characteristics of the paper you are running.



RELIABLY PRODUCTIVE FOR YOU

We offer these options to ensure you enjoy maximum uptime from your Xerox Nuvera®.

Direct Communication to Service*

These intelligent systems can connect to your network and report service issues as they happen. This means that your Customer Service Engineer arrives prepared with the appropriate parts, reducing delays in production and maximizing your uptime.

Xerox Nuvera® Productivity Plus (XPP) Integrated Maintenance Program

Xerox Nuvera® Productivity Plus (XPP) is an innovative, customer-focused maintenance program that makes it easy for you to diagnose and replace routine service items. A series of wizards provides step-by-step instructions to replace basic parts. This enables you to increase your productivity and print volumes, while effectively managing print quality—all while avoiding service intervention across every shift. Two program options are available—XPP Basic and XPP Advanced. You can choose which is best for you based on the level of participation that works for your business.

*Subject to local availability.

Xerox® prInteract® Remote Service Offerings

Remote service features including Automated Remote Monitoring and On Demand Machine Data Transfer are available through a secure, online connection between Xerox engineering staff and your Xerox Nuvera® EA. Using this connection, we can quickly respond to your service needs, enabling us to:

- Easily access equipment data to provide real-time recommendations and help optimize overall performance
- Automatically generate up-to-the-day accurate meter reads with Xerox® MeterAssistant®

“With each improvement made to the Xerox Nuvera®—from feeders to dual print engines to the next generation of stackers—the speed and quality just get better and better. Nothing can compete with it.”

—Kenny Liszewski
Operations Manager
Matrix Imaging Solutions

You'll have the power of two, with the simplicity of one.

You'll benefit from having the power and productivity of two print engines in one space-saving footprint with the Xerox Nuvera® 200/288/314 EA Perfecting Production System. This unique tandem architecture design gives you more—speed, uptime, performance and overall end-to-end productivity—so you can do more with your business.

YOU'LL GET RESULTS TWICE AS FAST WITH TANDEM ARCHITECTURE.

The Xerox Nuvera® can produce 200 to 314 (A4/8.5 x 11") duplexed impressions per minute because of its unique tandem architecture design. Although this comprises two print engines working closely together, the engines actually function differently together than they would if they were used independently.

- When printing in the duplex mode, both engines are used at full speed (100/144/157 A4, 8.5 x 11" pages per minute). Each prints one side of a two-sided document, creating a straight path that results in a net speed of 314 duplexed images per minute.
- When printing in the simplex mode, the system runs at 100/144/157 pages or impressions per minute.

A closed loop process ensures top performance for you.

Optimum performance is ensured by a closed loop process that continuously scans printing activities to monitor and maintain both print quality and registration.

- Advanced image balancing software assures consistent image quality at all times.
- The entire Xerox Nuvera® paper path, including both the print engines and all accessory components, is designed to provide operators complete access, at any time, for simple jam clearance with full job recovery.



You'll appreciate a smarter approach to paper handling.

Xerox® SmartPress PLUS Paper Handling works in conjunction with the FreeFlow® Print Server's onboard stock library and the Xerox Nuvera® straight duplex paper path to accommodate a greater variety of media. It is in constant communication with paper handling vacuums and rollers, much like a fuel engine where the pistons work together to provide maximum power and full job recovery.

YOU CAN DO MORE, MORE OFTEN, WITH PASS THROUGH PROGRAMMING.

Pass Through Programming technology lets you convert traditional downtime into bonus uptime in a variety of situations by enabling jobs to continue printing at 100/144/157 images per minute until our service arrives.

For example, when either of the two print engines requires a soft shutdown, your operators can select "Pass Through Mode." All pages are then imaged by the assigned primary print engine and simply pass through the idle print engine.

YOUR BUSINESS MOVES FASTER WITH OUR DUAL CORE PROCESSOR.

Your productivity is enhanced from the start with the Xerox Nuvera® 200/288/314 EA Perfecting Production System because the FreeFlow® Print Server front end offers a robust Dual Core Processor that more than exceeds the needs of most customers. It provides exceptional RIP speed to easily handle even your most complex jobs—for example, those jobs typically associated with variable data and high resolution images. If you are working in a uniquely aggressive environment where the application set is consistently dominated by complex jobs containing extraordinarily large amounts of high-end graphics and variable images, you also have the option to choose a second Dual Core Processor.

PARALLEL RIP FOR YOUR MOST CHALLENGING JOBS

Parallel RIP consists of a set of Xerox® proprietary software that leverages multiple processors, memory and software controls to boost image processing performance and print speed beyond traditional boundaries. It is ideal for long jobs with many non-repeating scanned images or digital photographs; these include text books, magazines, yearbooks and product manuals. It is also best for complex jobs with low run lengths, proofing and test prints.

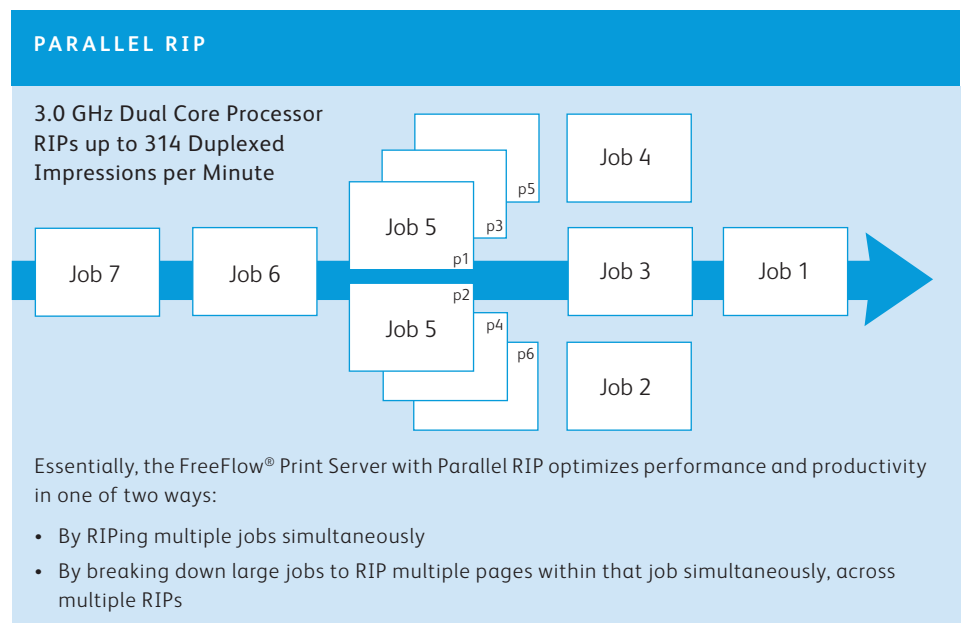
How does Parallel RIP work?

When selected, the FreeFlow Print Server will intuitively manage the jobs you have submitted for Parallel RIP for optimal performance.

- The Print Server may determine it is best to have a job processed on a single RIP, which will likely leave one or more of your remaining RIPs open for the next job or jobs.
- Or a large job can be split into sections that will be processed in parallel (simultaneously) using all of your available RIPs to complete it as quickly as possible.

How many RIPs can you have?

While the maximum number of RIPs varies depending on the processor and memory configuration of your Xerox Nuvera®, as a rule, approximately two to three RIPs will run on one Dual Core Processor. If you choose to add an optional second Dual Core Processor, you can potentially have up to five RIPs working together. (LCDS, IPDS™ and PCL® data streams are not further enhanced via Parallel RIP.)



Here's how the Xerox® FreeFlow® Core Print Service benefits your business.

You'll enjoy powerful job control plus time savings in every environment with the Xerox® FreeFlow Print Server. Integrated right into the Xerox Nuvera® 200/288/314 EA Perfecting Production System, this print server enhances your business's productivity, effectiveness and, ultimately, its profitability in many vital ways.

A WIDE RANGE OF FEATURES PUTS YOU IN CONTROL OF EVERY JOB.

The FreeFlow Print Server delivers important benefits for your business. For example:

- Receive/RIP/print jobs concurrently to efficiently produce hundreds of small jobs or transactional data jobs with thousands of customer database entries.
- Print and reprint on demand with simple controls to preview, edit, impose, proof, interrupt, reprogram and forward jobs.
- Advanced security controls allow individual or group settings.
- Bridge the physical and digital worlds and submit jobs from just about anywhere, including desktop/commercial publishing workflows. Submit data from mainframe systems, client/server architectures, XML/database/ASCII input or simply submit data from DVDs, CDs and even portable USB devices.
- Submit print-ready jobs into pre-set Hot Folders for easy, automatic printing.
- Automate job ticketing and customize job workflows through up to 250 programmable queues with minimal operator intervention.
- Use the stock library to promote efficient use of media. The Sheet Enhancement Module automatically adjusts performance based on stock selected.

- Save on training costs and increase uptime. Easy-to-use graphical user interface (GUI) and workflow lend themselves to the "train once" paradigm.
- Ideal for both publishing (high imaging quality and speed) and transactional environments—simultaneously accommodates an impressive variety of common data streams natively, including Adobe® PostScript®, PCL®, PDF, TIFF, ASCII, IPDS™ and LCDS, and variable data formats such as FreeFlow VI Interpreter (VIPP®) and PPML.
- Add optional memory and hard drive to increase the Xerox Nuvera® overall performance and your ability to store more job data on the server.

A SMOOTH WORKFLOW: EASIER FOR YOUR BUSINESS, EASIER FOR YOU.

The Xerox® FreeFlow Digital Workflow Collection is designed to take you easily through every stage of managing your jobs, from creation to final output. Integrating with the Xerox Nuvera®, this suite of optional solutions enables you to enhance, automate and simplify your existing workflow, increasing productivity and making the most of your investment.

KEEPING YOU STOCKED AND RUNNING—AUTOMATICALLY.

With the Automatic Supplies Replenishment option on your Xerox Nuvera®, the print engine will automatically call in your supplies order for you, as you need it. Available as part of your service contract, our "smarter" Xerox Nuvera® system has the intelligence to calculate when a certain number of pixels printed has been reached and then sends a signal via your network to Xerox to order more crucial replacement items. We make sure you have on-hand what you need to keep running, increasing your productivity and helping you focus on running your business.



FREEFLOW® OPTION	FUNCTION	WHAT IT DOES FOR YOU
FreeFlow Core	Automates process steps required to prepare a job for print.	Removes costly manual prepress steps, reduces costs and reduces the time it takes to get jobs through your print shop.
FreeFlow Digital Publisher	Provides both print and mobile/online communications simultaneously using a single, unified workflow.	Create an interactive, dynamic, electronic version of any publication—helping your customers dramatically enhance their reader’s experience.
FreeFlow Output Manager®	Automates load balancing and job scheduling.	You can automate your application production and enhance efficiency.
FreeFlow Makeready®	Simplifies prepress operations to help make short work out of complex jobs.	Jobs can be completed more accurately and more quickly, freeing up your operators to process more work.
FreeFlow Variable Information Suite	A suite of tools to help you design, create and manage variable data print jobs more quickly and profitably.	Add the power of personalization without compromising productivity. On their own or as an integrated solution, VI Suite tools can help you optimize production workflows and maximize your bottom line.

Features that fit your business.

The Xerox Nuvera® 200/288/314 EA Perfecting Production System offers a comprehensive set of features to meet the needs of your business, your environment and your customers. From feeding to finishing, it's a system that's all about helping you accomplish what matters most to you—and enabling your success.



From Feeding to Finishing
The Xerox Nuvera® offers a complete set of features that enables your success.

1

PAPER HANDLING GETS YOU OFF TO A GREAT START.

The Xerox Nuvera® offers you excellent paper handling.

- Paper trays rely on air shuttle feed technology. Processor-controlled, using information from the stock library, this technology ensures reliable feeding and supports heavier media and coated paper. Air knives separate paper to avoid misfeeds.
- The system “tells” rollers when to press harder, when the air knives should add thrust and more, to deliver a highly intuitive and productive paper-handling process.
- The straight duplex paper path ensures ultra-reliable paper handling for duplex production printing, and it's easily accessible to your operators.
- You can reload paper without job interruption to significantly increase continuous productivity.

Choose from the following sheet-feed modules. Maximize your sheet-feed capability by combining any three modules to suit your workflow:

Standard Sheet-Feed Module

- Four trays, 5,800-sheet capacity
- Do more high-value applications with more unattended run time at point of need and produce high-impact jobs on demand.

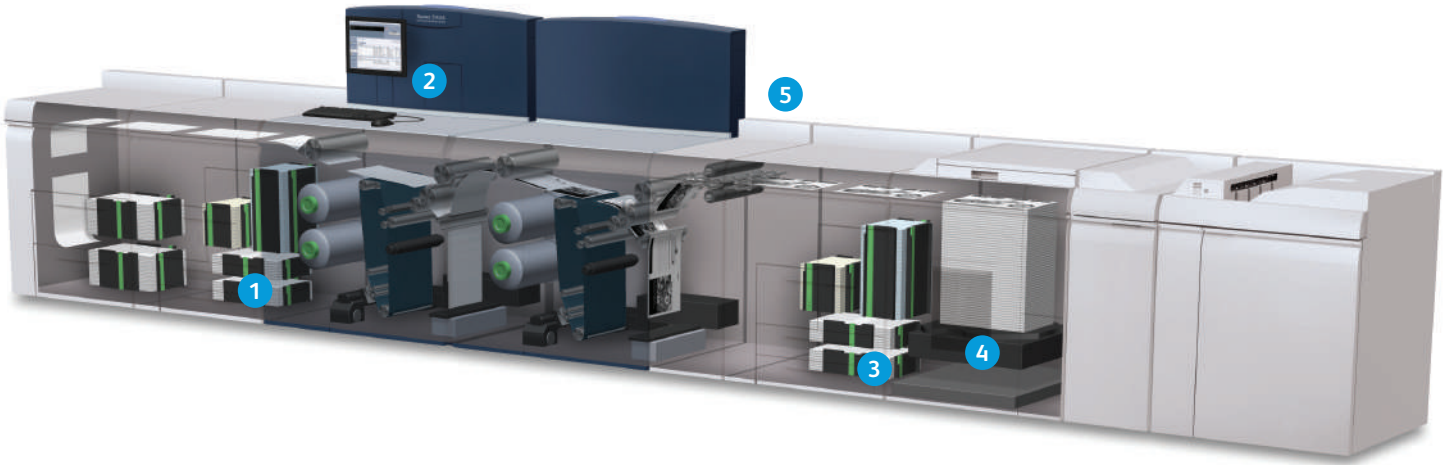
Oversized High Capacity Sheet-Feed Module

- Two oversize trays, 3,200-sheet capacity
- Ideal alternative if you want to leverage oversize stocks. Now run sheets up to 12.6 x 19.3”—ideal with four-up book block printing.

Note: When you add up to four of the above modules in any combination to your configuration, you will enable up to a 23,200-sheet capacity with as many as 16 pick points to support long print runs and complex, multistock production runs.

Tecnau SheetFeeder NV

- Attaches to a standard Sheet-Feed Module.
- Can provide paper cost savings, reduce operator intervention and add up to five hours of continuous feed in a production print environment while still providing access to the paper trays for multiple pick points.



2

YOU'LL GET BEST RESULTS WITH EXCEPTIONAL IMAGING AND POWERFUL PROCESSING.

The powerful Xerox® FreeFlow® Print Server is integrated right into the Xerox Nuvera® 200/288/314 EA Perfecting Production System, providing you with powerful job control and time-saving efficiency in your publishing, transactional and TransPromo environments. You'll enjoy feature benefits such as:

- Efficient management up to 250 queues
- Integration with a robust stock library
- Imposition software
- Enhanced line screen capability (available in 85, 106, 125, 134 and 156 lpi)
- Sophisticated variable data capabilities—including native printing of Xerox® FreeFlow VI Suite output; other variable data streams are also supported.

The easy-to-use Graphical User Interface (GUI) allows your operators to easily manage multiple print jobs from multiple queues. From the interface, you can hold, interrupt, proof, reprogram and forward jobs to maximize print engine productivity.

Using the Page Exception Program, your operators can incorporate multiple stocks or inserts throughout your application.

3

ADD VALUE TO YOUR OUTPUT WITH INSERTING.

You can add value and impact to your output by inserting color covers, preprinted inserts or specialty media with our Post-Print Paper Insertion Modules.

Insertion Module

- Four trays, 5,800-sheet capacity

Oversized High Capacity Insertion Module

- Two trays, 3,200 oversized sheets
- Note: Configure up to two Load-While-Run Modules that enable a maximum of 11,600-sheet capacity for insertion.
- Insertion can be integrated so you can simply load preprinted stock and run the job.

4

YOU CAN COUNT ON A PROFESSIONAL FINISH.

Choose from a wide variety of inline and offline professional finishing options, both from us and from our industry-leading third-party suppliers. These options are designed to accommodate your production requirements, taking on everything from complex documents to challenging environments.

5

XEROX NUVERA® FLEXIBLE SPEED PROGRAM—RAMP UP TO MEET YOUR WORKLOAD.

The Xerox Nuvera® Flexible Speed Program gives you the option to temporarily upgrade your Xerox Nuvera® and boost the system's speed to meet your workload. That means you can convert your Xerox Nuvera® 200 EA Perfecting Production System to a Xerox Nuvera® 288 EA Perfecting Production System for 30, 60 or 90 days. At the end of that time, you can opt to renew the upgrade for another 30, 60 or 90 days or allow your system to return to its original capacity.

If you have	Upgrade to
Xerox Nuvera® 200 EA Perfecting Production System	Xerox Nuvera® 288 EA Perfecting Production System

A perfect finish for every job you do.

Finishing can make or break your applications. The Xerox Nuvera® 200/288/314 EA Perfecting Production System offers you many ways to finish your output—and to create high-quality, high-impact applications right at your point of need.

OUR PARTNERS OFFER YOU THE BEST FINISHING IN THE BUSINESS.

We offer you the finishing options you need to wrap up your jobs professionally. From booklet makers and perfect binders to inserters, stackers, stitchers, spiral binders and more, we partner with the makers of today's best finishing devices and equipment. These include recognized industry leaders such as C.P. Bourg, Plockmatic, GBC and others.

XEROX® INTEGRATEDPLUS FINISHING SOLUTION FOR BOOKLETS

Now prepress setup and finishing setup can be automated. You get the best of both finishing worlds—the convenience of inline with the flexibility of offline, plus unsurpassed labor savings. The Xerox® IntegratedPLUS Finishing Solution for Booklets, enabled with the Xerox exclusive C.P. Bourg® Dual Mode Sheet Feeder, allows selected finishing devices to be set up automatically, through JDF instructions, whether or not they are attached to a specific printer.



LATEST ADDITIONS TO FINISHING OPTIONS

Xerox Exclusive: C.P. Bourg Dual Mode Sheet Feeder

- Acts as a bypass sending sheets to downstream third-party finishers. Users can manually feed stacks from other printers into downstream third-party finishers in the “offline mode” while Xerox Nuvera® prints to its stacker or top tray.
- Saves time and enables you to produce more jobs through automated setup of files and automated setup of inline or offline finishers with the Xerox® IntegratedPLUS Finishing Solution for Booklets.
- Adds integrity by allowing printed stacks to easily be moved to the finisher without splitting the stack.
- In offline mode, the attached finisher can run at up to 15,000 sheets per hour.
- Optimizes finishing investments.

Xerox® Production Stacker

- Unload while run—on a single unit.
- Waist-height removal of finished stacks.
- Configure up to three stackers in tandem—providing almost 60–85 minutes of unattended print and stack time.

**CONFIGURE YOUR XEROX NUVERA®
WITH ANY NUMBER OF FINISHERS**



Basic Finisher
Module



Basic Finisher
Module Plus



Basic Finisher Module –
Direct Connect



Xerox® Production
Stacker



Xerox® Tape Binder



C.P. Bourg® BSFx
Dual Mode Sheet Feeder



GBC® FusionPunch® II
with Offset Stacker



Dual Xerox® Tape Binders



C.P. Bourg® BDFNx Booklet Maker
with Square Edge



Watkiss PowerSquare™ 264



Xerox® Book Factory

Every application opportunity is your opportunity.

There are many ways you can bring together the outstanding features the Xerox Nuvera® 200/288/314 EA Perfecting Production System offers you. We've made them modular, so your choices are plentiful—and they're all yours. What's most important is that you have the freedom to create a system specially designed to meet the specific needs of you and your customers and to make your business thrive.



¹SheetFeeder NV-R solution requires configuration with Standard Sheet-Feed Modules.

JUST THE WAY YOU WANT IT

From transactional applications to book publishing to technical manuals and more, the Xerox Nuvera® 200/288/314 EA Perfecting Production System makes it easy for you to add value and deliver results for your customers. You'll have limitless opportunities to develop and create new and enhanced applications that will expand your business. It offers the high image quality, speed and productivity needed to make the most of every application.

ACHIEVE BETTER RESPONSE RATES FOR YOUR TRANSACTIONAL PIECES.

Because the Xerox Nuvera® simultaneously accommodates a wide range of common datastreams natively, it can easily produce all of your transactional applications. Target your highest-value customers with pertinent upsell and cross-sell messages every month. And move lower-value customers to a place of greater loyalty, frequency and purchase volume.

YOU'LL FIND THE BOOK OPPORTUNITY EASY TO READ.

With the Xerox Nuvera® 200/288/314 EA Perfecting Production System, you are well prepared to succeed when printing books and manuals. We offer the right business model, the right workflow tools and experience, and the right technology to ensure your success in the growing digital book printing business. An excellent complement to offset, this system enables you to deliver the look and feel that authors, publishers and readers demand with high imaging quality and an offset-like matte finish.



²Available "Dual" finishing combinations (not shown):
 (1) Basic Finisher Module Plus and (1) Basic Finisher Module;
 (2) Basic Finisher Modules Plus and (1) Xerox® Production Stacker;
 (1) Basic Finisher Module Plus and (1) Basic Finisher Module—Direct Connect
 with other inline center-registered finishing solutions;
 (1) Basic Finisher Module Plus and (2) Xerox® Production Stacker;
 (1) Basic Finisher Module Plus and (1) Xerox® Production Stacker

Drive your business ahead.

The Xerox Nuvera® 200/288/314 EA Perfecting Production System unleashes the advanced productivity you need to build business potential so you can achieve your goals and beat the competition.

For more information on Xerox Nuvera® EA,
call 1-800-ASK-XEROX or visit us at www.xerox.com.

© 2018 Xerox Corporation. All rights reserved. Xerox®, Xerox and Design®, FreeFlow®, FreeFlow Makeready®, FreeFlow Output Manager®, MeterAssistant®, prInteract®, VIIPP® and Xerox Nuvera® are trademarks of Xerox Corporation in the United States and/or other countries.
PN03378 BR24550 NU2BR-01UF

610P722290D

