



Production performance with **colour impact**



WorkCentre™ 7655/7665

The Xerox WorkCentre 7655/7665 advanced multifunction system delivers high-end office performance. Powerful, flexible and easy-to-use, it can easily handle the output volumes needed for document intensive environments. Add to that unrivaled, high impact colour and you have the versatility to give your business a competitive edge.

Performance to increase productivity

Why crowd the office with multiple devices when one can meet all your needs? The WorkCentre 7655/7665 multifunction system has the features you use everyday and the power to be a truly multi-tasking.

- Super-fast copy and print speeds up to 65 ppm enhance productivity regardless of job size or volume. Full colour copying and printing is fast – up to 50 ppm colour!
- The ability to scan black and white documents at 80 ppm and colour documents at 50 ppm allows your department to swiftly scan, retrieve, electronically store and distribute documents to your desktop, email or to the network.
- Multi-tasking operation means multiple users can simultaneously perform different tasks – scan, copy, print, transmit faxes and manage the queue – a helpful feature in maximising business efficiency.
- Nothing gets noticed like colour! 2400 x 2400 dpi output resolution gives your documents unmatched clarity and impact.

Keep the work flowing

Powerful scanning capabilities efficiently organise, edit and distribute information.

- Optional scanning workflows include Scan to PC Desktop, and scan to PDF, network file server, document management system, email and fax.
- Improved scan export compression (MRC, JBIG2) reduces traffic on the network and speeds your documents to their destination.



Expanding as your business grows

You need a machine that works the way you do. This WorkCentre device is modular and upgradeable. Packed with functionality and options, it meets the needs of any environment.

- Started off with a digital copier and need more functionality? No problem. You can upgrade to a fully-featured advanced multifunction system.
- Support for a wide range of paper and speciality media in weights up to 300 gsm, and sizes up to SRA3, so that whatever the application, you're ready to print.
- Large paper capacity of 3,260 sheets. Add a 2,000-sheet high capacity feeder to further expand capabilities.
- Choice of two finishers: Advanced Finisher offers 50-sheet multi-position stapling and hole-punching. Professional Finisher with Booklet Maker provides saddle-stitched booklet making, v-fold, stapling and hole-punching.

1 Multiple finishing options let you choose the capabilities that are right for individual workgroups



Collate



Hole Punch



Staple



V-Fold



Saddle-stitch Booklet



Large input capacity of up to 3,260 sheets

2 3

500-sheet universal-size trays

4

870-sheet letter-size tray

5

1,140-sheet letter-size tray

6

250-sheet bypass tray

7

2,000-sheet optional high-capacity feeder

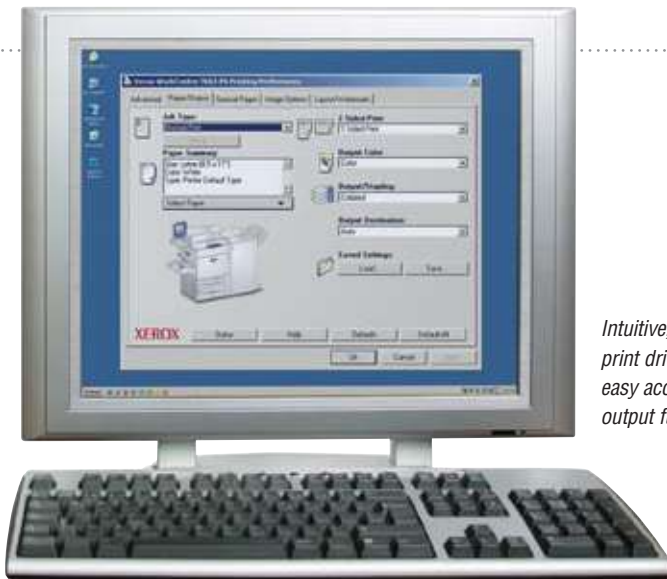


Outsourced quality produced in-house...

- Need added impact in that important document? Print in full colour easily, from the same device. Add high-quality affordable colour at 2400 dpi without expensive trips to outside vendors.
- Emulsion aggregation high gloss toner delivers a professional glossy finish on documents where impact is the key. Trickle charge development (a Xerox innovation) maintains high image quality throughout the job.

...and colour under control

- In mixed colour / black and white documents, you only pay for colour on pages that use colour.
- Regulate access to colour to control costs. Allocate colour-page limits by user, department, etc.
- Built-in reporting functions let you track how much colour you're using on all services – print, copy, scan, fax and email – making colour use decisions easier in the future.



Intuitive, bi-directional print drivers provide easy access to all output functions.

Easy from end to end

Running complex jobs doesn't have to be complicated. From the large touchscreen interface and bi-directional print drivers to simple job-based reporting and accounting tools, this device is designed with reliability and ease of use in mind.

- Installation is quick and easy. Network administrators can "clone" the configuration for simple installation of multiple units.
- User intervention is kept to a minimum. Two black toner cartridges means toner lasts longer and can be replaced on the fly. And SMart Kit™ technology ensures the device is kept up and running.
- Advanced device management software makes it easier to ensure your system is running smoothly.
- Xerox Standard Accounting software provides job-based accounting features for greater cost control of printing, copying, faxing and scanning.

Large, full-colour touchscreen is easy to use and simple to programme.



Security

Robust security features let you restrict access, manage usage and ensure confidentiality.



- **Network Authentication** restricts access to scan, email and network fax features by validating user names and passwords prior to use. With Audit Log capabilities you'll know who sent what and when.
- **Secure Print** prevents unauthorised viewing by holding jobs in queue until a PIN is entered releasing documents to print. Secure Print job submission utilises IPsec.
- **Image Overwrite** eradicates data by overwriting the disk surface with patterns of data.
- **Embedded Fax** prevents unauthorised device access via the fax subsystem. There is complete separation of the fax telephone line and the network connection.
- **Device Access Password Protection** ensures administrative set-up screen and remote network settings cannot be viewed or altered without authentication.
- **IP Address Restriction (IP Filtering)** controls communications with specific network clients.
- **Secure Scan** transmits files using HTTPS (SSL).
- **Secure Device Administration** with HTTPS is enabled through CentreWare



Productive, modular and upgradeable

The ideal strategy for cost-conscious, ever-changing times



COLOUR

The impact of colour. With colour, your business will benefit from one of the most effective business tools available.

EASE OF USE

Ease of use, ease of management. Your department is instantly more efficient thanks to the many easy, yet advanced, user and management features.

COPY

Start with copying. All WorkCentre 7655/7665 devices start with robust copy capability in black and white and brilliant colour. Security features and job-based accounting are built-in.

PRINT

Add network printing. Make your WorkCentre 7655/7665 a lot more productive by networking and adding affordable colour printing and scanning.

SCAN

FAX

Do it all. Build an integrated system that includes internet/ network faxing, scanning and email capability. Add throughput and finishing options, customised network accounting solutions, and more.

EMAIL

FINISHING



For more information, please contact your local Xerox sales representative or visit us at www.xerox.com/office



| CONFIGURATIONS | WorkCentre™ 7655 | WorkCentre™ 7665 |
|--|---|--|
| Speed (Colour / Black-and-white) | Up to 55 ppm black-and-white / 40 ppm colour | Up to 65 ppm black-and-white / 50 ppm colour |
| Duty Cycle | Up to 200,000 pages / month | Up to 300,000 pages / month |
| Device Memory | 512 MB | |
| Paper Handling | Trays 1–2: 500 sheets each; Size: Custom sizes up to 11 x 17 in. / A3; Tray 3: 870 sheets; Size: 8.5 x 11 in. / A4; Tray 4: 1,140 sheets; Size: 8.5 x 11 in. / A4; Bypass Tray (Tray 5): 250 sheets; Size: Custom sizes up to 13 x 19 in. / SRA3; Total 3,260 sheets High Capacity Feeder: 2,000 sheets; Size: 8.5 x 11 in. / A4 | |
| Paper Input | Standard Optional | |
| Finishing Options | Offset Catch Tray (OCT); Advanced Finisher: 500-sheet top tray, 3,000-sheet stacker tray, 2/4- or 2/3-hole punching and multi-position stapling; Professional Finisher with Booklet Maker: 500-sheet top tray, 1,500-sheet stacker tray, 2/4- or 2/3-hole punching, multi-position stapling, saddle-stitch booklet maker, v-folding; Convenience Stapler | |
| Security | Fax Security, Secure Print, Audit Log, Secure Workflows, SNMP v3, IP Filtering, Optional: Image Security Overwrite | |
| Accounting | Internal Auditor, Xerox Standard Accounting (Copy, Print, Scan, Fax, Email), Additional Job-Based Accounting Options available | |
| Copy | As fast as 5.5 seconds black-and-white / 8.9 seconds colour | |
| First-Page-Out Time | 2400 x 2400 dpi | |
| Output Resolution | 40 GB (minimum) | |
| Hard Drive | Basic Copy Features: Automatic two-sided, auto reduction and enlargement (25% – 400%), auto paper select, auto tray switching, mixed-sized originals, booklet creation, image quality enhancements, build job, book copying / two-sided book copying, Output Features: auto colour selection, transparencies, booklet creation, multi-up, invert image, covers, inserts and tab copying, sample set and job storage, heavy-weight paper, hole punch, stapling | |
| Copy Features | 1.8 GHz Athlon™ / PCL XL/5c, PCL 6 emulation, PostScript® 3™ language support, PDF v1.5 | |
| Print | 10/100BaseT Ethernet | |
| Processor / PDL Support | 2400 x 2400 dpi | |
| Connectivity | 80 GB (minimum) | |
| Output Resolution | Delay-, sample- and secure-print; simultaneous rip, receive, programme-ahead, queue-process and transmit; bi-directional print drivers; page-level programming; tab printing; embedded web server for remote control/monitor/setup; job monitoring at device and at desktop | |
| Hard Drive | Walk-Up Fax (one-line and two-line options), Internet Fax, Network Server Fax | |
| Print Features | 80 ppm black-and-white / 50 ppm colour | |
| Fax | Network Scanning, Scan to Email, Scan to PC Desktop | |
| Fax Options | Foreign Device Interface, Xerox Copier Assistant, USB 2.0 | |
| Scan | | |
| Scan Speed (with DADF) | | |
| Scan Options | | |
| Other Options | | |

Xerox paper and specialty media.

Xerox offers a broad portfolio of digitally optimised paper and specialty media, making it easy for you to maximise the capabilities of your WorkCentre 7655/7665 device. You'll have the flexibility to create a variety of applications, such as customised newsletters, posters, brochures, labels, ID cards and durable documents.

Unrivalled service and support.

Behind every Xerox product is a large customer support network that's unrivalled in the industry and available when you need it. Xerox service professionals use leading-edge technologies to keep you up and running. They're even linked to the engineers who designed your product, so you can be confident when you choose Xerox.

